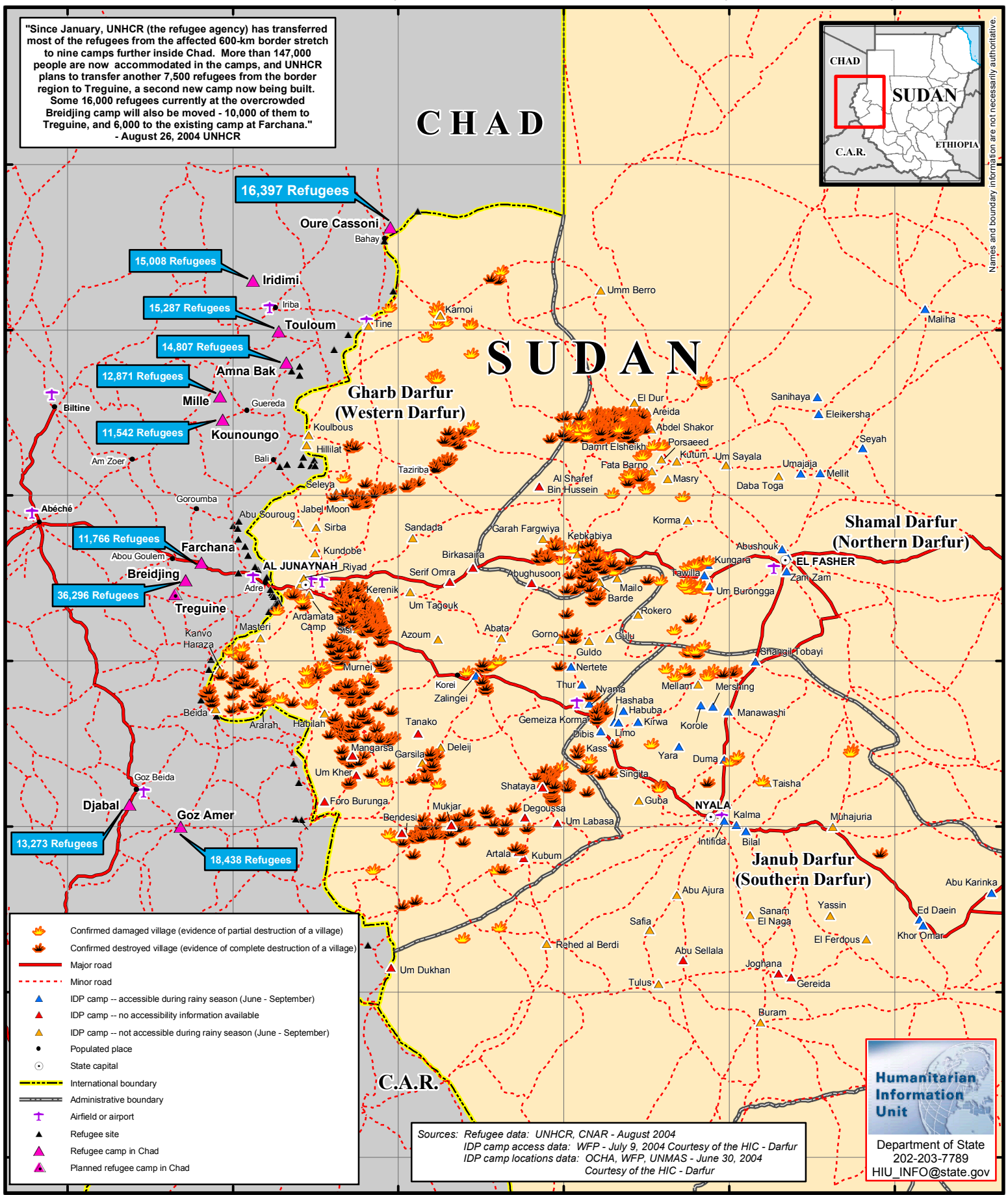


# Sudan (Darfur) - Chad Border Region Confirmed Damaged and Destroyed Villages

Villages in Darfur confirmed as destroyed: 576  
Villages in Darfur confirmed as damaged: 152

"Since January, UNHCR (the refugee agency) has transferred most of the refugees from the affected 600-km border stretch to nine camps further inside Chad. More than 147,000 people are now accommodated in the camps, and UNHCR plans to transfer another 7,500 refugees from the border region to Treguine, a second new camp now being built. Some 16,000 refugees currently at the overcrowded Breidjing camp will also be moved - 10,000 of them to Treguine, and 6,000 to the existing camp at Farchana."  
- August 26, 2004 UNHCR



Sources: Refugee data: UNHCR, CNAR - August 2004  
IDP camp access data: WFP - July 9, 2004 Courtesy of the HIC - Darfur  
IDP camp locations data: OCHA, WFP, UNMAS - June 30, 2004  
Courtesy of the HIC - Darfur

**Humanitarian Information Unit**  
Department of State  
202-203-7789  
HIU\_INFO@state.gov

Names and boundary information are not necessarily authoritative.

16°N

15°N

14°N

13°N

12°N

11°N

10°N

21°E

22°E

23°E

24°E

25°E

26°E

21°E

22°E

23°E

24°E

25°E

26°E

0 25 50 100 Kilometers

