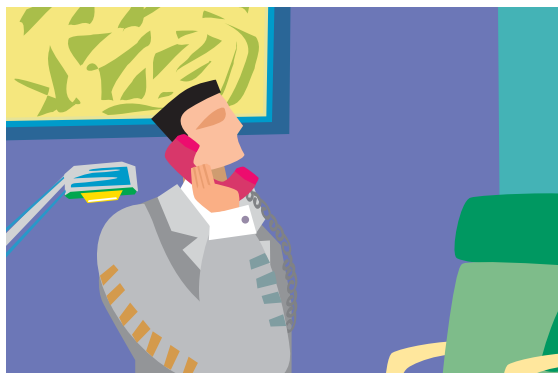


## Contacts:



Ruth Ann Killion

Chief, Planning, Research, and Evaluation  
Division

Carnelle E. Sligh, Secretary  
301-763-3526

Suitland Federal Building #2, Room 1107

James B. Treat

Assistant Division Chief for Evaluations

Elizabeth A. Banks, Secretary  
301-763-3608

Suitland Federal Building #2, Room 1103

Deborah E. Bolton

Assistant Division Chief for Project  
Management and Statistical Computing

Tammie M. Shanks, Research Assistant  
301-763-2061 or

The Project Management and  
Communications Staff  
301-763-2550

Suitland Federal Building #2, Room 1002

PRED/03-TEEP

U.S. Census Bureau  
Washington, DC 20233  
Our physical street address:  
4700 Silver Hill Road  
Suitland, MD 20746

## The Census 2000 Testing, Experimentation, and Evaluation Program



**A Quick Reference Guide  
How to Obtain Results**

U.S. CENSUS BUREAU  
*Helping You Make Informed Decisions*

U.S. Census Bureau  
**PRED**  
PLANNING, RESEARCH,  
AND EVALUATION DIVISION



## What is the Census 2000 Testing, Experimentation, and Evaluation Program?

This program will inform the U.S. Census Bureau and our customers about the effectiveness of Census 2000 and inform planning for the next decennial census in 2010, the American Community Survey, the Master Address File, and other Census Bureau censuses and surveys. This program consists of tests of various census enumeration techniques, experiments with different questionnaires and ways to respond, an administrative records census experiment, and over 90 evaluations of key operations, systems, and activities conducted in Census 2000. Relevant findings from the tests, evaluations, experiments, and other research will be synthesized into topic reports that address broad census subjects.

## Where can I find more information about the program?

For a full description of the program and products, visit our Web site at

[www.census.gov/pred/www/index.html](http://www.census.gov/pred/www/index.html)

For a copy of the document describing the program, you may contact staff listed on the reverse of this brochure.



## What are topic reports?

Topic reports synthesize relevant findings from the evaluations, experiments, and other research on related census subjects, and make recommendations for the 2010 Census.

## What topics will reports be prepared for?

Reports for the following topics will be prepared:

- Address List Development
- Automation of Census Processes
- Content and Data Quality
- Coverage Improvement
- Coverage Measurement
- Data Capture
- Data Collection
- Data Processing
- Ethnographic Studies
- Partnership and Marketing
- Privacy
- Puerto Rico
- Race and Ethnicity
- Response Rates and Behavior Analysis
- Special Places and Group Quarters

## What information will the Census 2000 Evaluation Reports provide?

Evaluation reports assess the effectiveness of key operations, systems, and activities in order to evaluate the current census and to facilitate planning for the 2010 Census, the American Community Survey, and the Master Address File modernization.

## When will reports be available?

Topic reports will be available for release beginning in early 2003 and completed by the fall of 2003.

## How do I obtain completed topic, evaluation, and experiment reports?

Information on the *Census 2000 Testing, Experimentation, and Evaluation Program* and completed reports are available on the Planning, Research, and Evaluation Division home page from the census Internet at

[www.census.gov/pred/www/index.html](http://www.census.gov/pred/www/index.html)

## Where can I find a list of all evaluations and experiments?

The *Census 2000 Testing, Experimentation, and Evaluation Program* document provides a detailed list and descriptions of all evaluations and experiments. Visit our Web site at [www.census.gov/pred/www/index.html](http://www.census.gov/pred/www/index.html) to access this information.