

NOTE:
 SOUNDINGS ARE IN FEET AND TENSIVE AND SHOW DEPTHS AT ADOPED
 LOW WATER PLANE 100 IN U.S. WEATHER BUREAU GAGE AT RICHARD,
 ID. NEES W. P. 1.
 FIGURES IN PARENTHESES (THIS 1.7) SHOW HEIGHT ABOVE LOW WATER.
 ELEVATIONS ARE REFERRED TO MEAN SEA LEVEL (U.S.G.A.S. DATUM 1929
 ADJUSTMENT).
 CONTOUR INTERVAL 5 FEET.
 5 FOOT DEPTH CURVE SHOWN THUS: _____
 6 FOOT DEPTH CURVE SHOWN THUS: _____
 CENTER LINE OF PROPOSED CHANNEL SHOWN THUS: _____
 DISTANCE IN MILES FROM MOUTH OF RIVER MEASURED ON CENTER LINE OF
 PROPOSED CHANNEL SHOWN THUS: (5.5)

SNAKE RIVER, WASHINGTON - IDAHO
MOUTH TO OREGON - WASHINGTON LINE
 REVIEW REPORT

IN 54 SHEETS SCALE 1:2,000 SHEET NO. 84

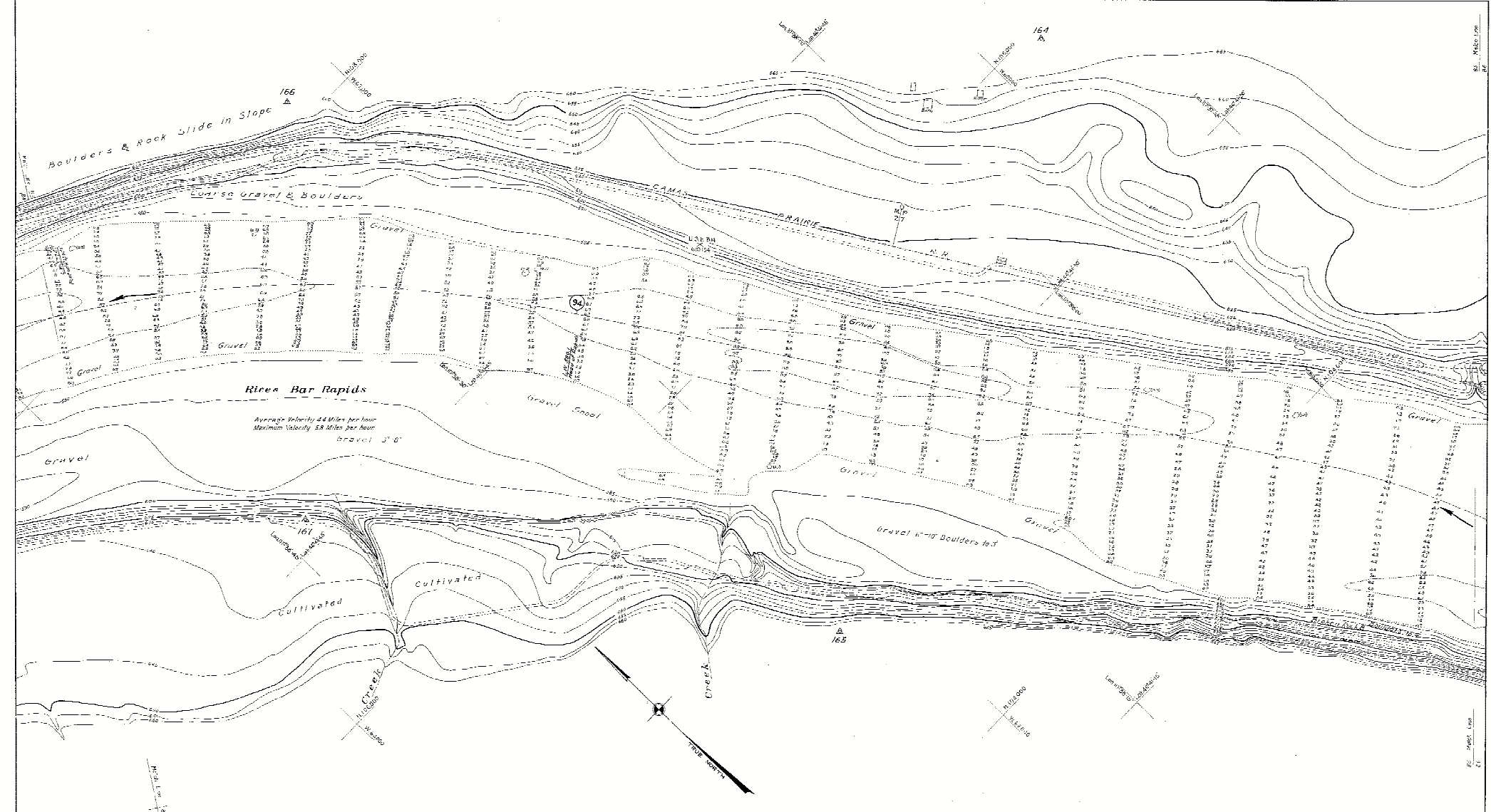
U. S. ENGINEER OFFICE, PORTLAND, OREGON, 1934

Submitted: *Alfred L. Barr* Approved: *W. H. Williams*
 Assistant Engineer Major, Corps of Engineers

Drawn by: B. F. O.A.M. Transmitted with report dated June 10, 1935.

SN 1 4/85
 N-9-2/84

SN-1-12/84



NOTE
 SOUNDINGS ARE IN FEET AND TENTHS AND SHOW HEIGHTS BY ADJUSTED
 LOW WATER PLANS 100 ON U.S. WEATHER BUREAU GAGE AT BEND, OREGON.
 EL. 1070.0 M. S. L.
 FIGURES IN PARENTHESES SHOW 1:1.75 BANK HEIGHT ABOVE LOW WATER.
 ELEVATIONS ARE REFERRED TO MEAN SEA LEVEL (U.S.G.A.S. DATUM 1929
 ADJUSTMENT.)
 CHANNEL INTERVAL 6 FEET.
 5 FOOT DEPTH CURVE SHOWN THUS: _____
 8 FOOT DEPTH CURVE SHOWN THUS: _____
 CHANNEL LINE BY PROPOSED CHANNEL SHOWN THUS: _____
 DISTANCE IN MILES FROM MOUTH OF RIVER MEASURED ON CENTER LINE OF
 PROPOSED CHANNEL SHOWN THUS: (34)

**SNAKE RIVER, WASHINGTON - IDAHO
 MOUTH TO OREGON - WASHINGTON LINE
 REVIEW REPORT**

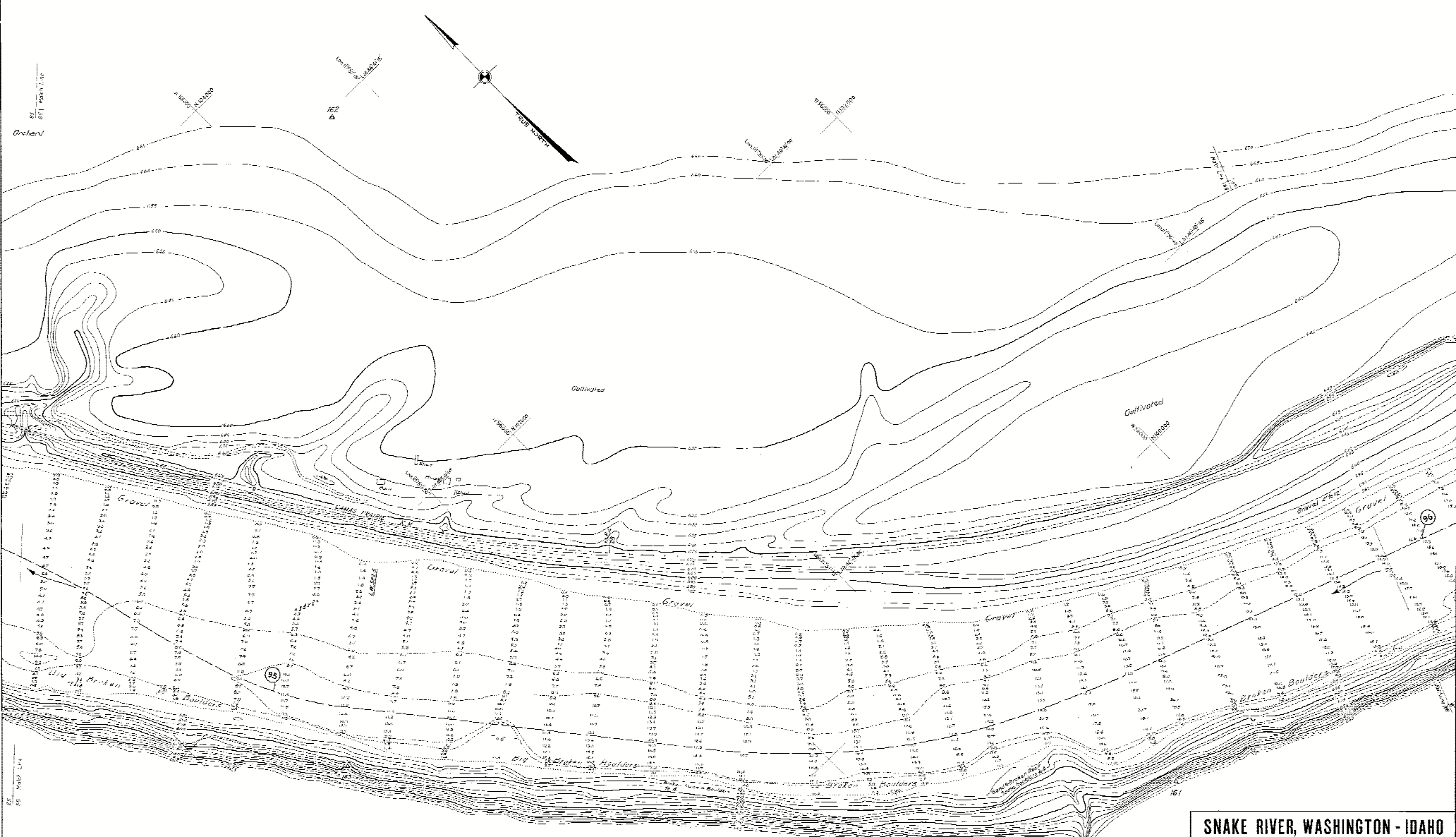
IN 54 SHEETS SCA 1:12,000 SHEET NO. 65

U. S. ENGINEER OFFICE, PORTLAND, OREGON, 1934.

Submitted: *Walter L. Barr* Approved: *W. L. Barr*
 Associate Engineer Major, Corps of Engineers

Drawn by J. W. F. 5 A.M. Transmitted with report dated June 10, 1935

371-1-A/86
 H-9-2/85



NOTES:
 1. ELEVATIONS ARE IN FEET AND TENTHS AND SHOW DEPTHS AT APPROXIMATE LOW WATER PLANE FOR ON-DRAIN WATER SURFACE BASE AT READING, S. 10285 M. S. L. 1
 2. FIGURES IN PARENTHESES FIGS. (1.27) SHOW HEIGHT ABOVE LOW WATER SURFACE AND HEIGHT TO MEAN SEA LEVEL (U.S.C.G.S. DATUM 1929 ADJUSTMENT).
 3. CONTOUR INTERVAL IS FEET.
 4. TYPICAL DEPTHS SHOWN THERE.
 5. TYPICAL DEPTHS SHOWN THERE.
 6. CHANNELS ARE TO PROPOSED CHANNEL SHOWN THERE.
 7. DISTANCES IN MILLS FROM MEASUREMENTS ON CENTER LINE OF PROPOSED CHANNEL SHOWN THERE.

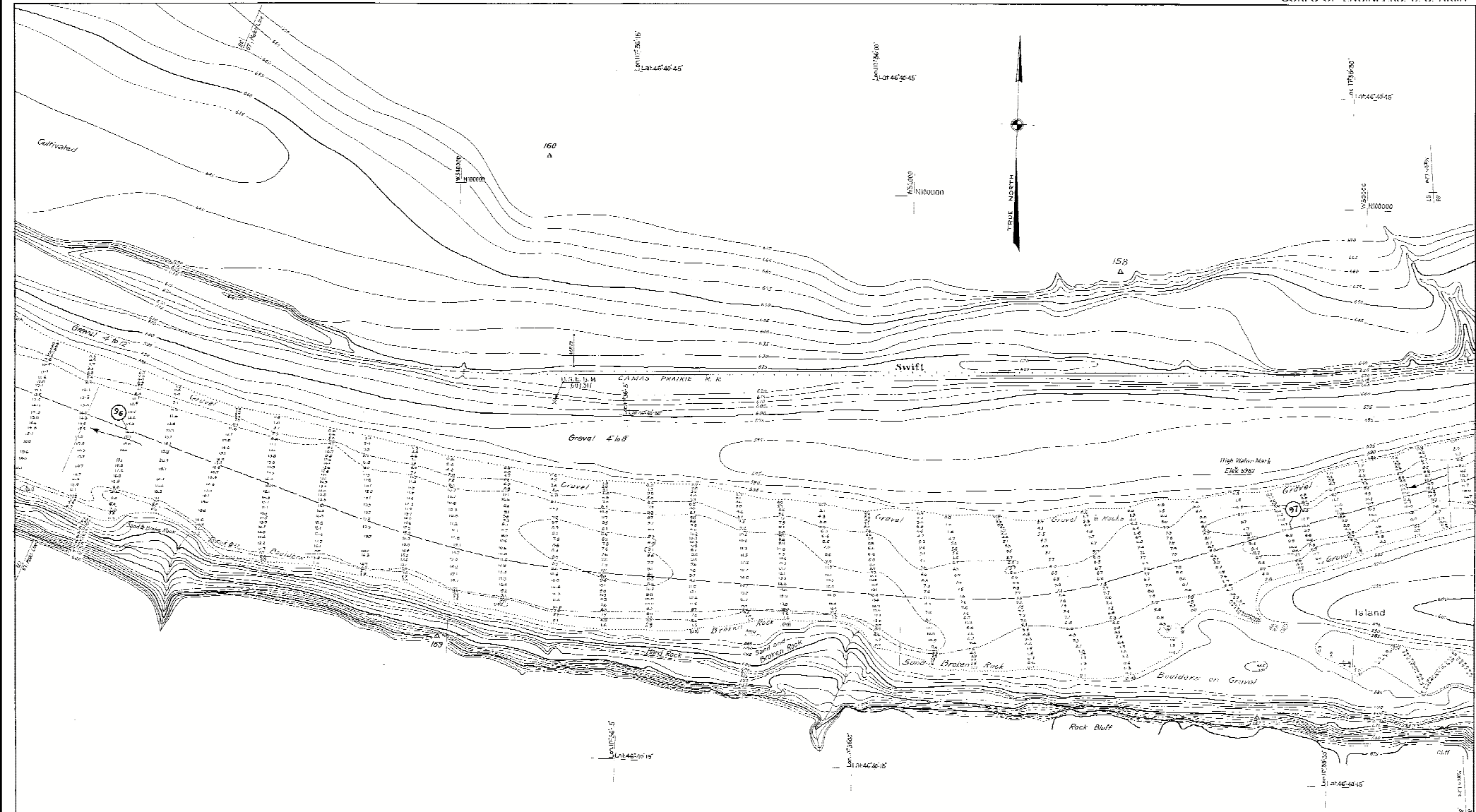
**SNAKE RIVER, WASHINGTON - IDAHO
 MOUTH TO OREGON - WASHINGTON LINE
 REVIEW REPORT**

IN 164 SHEETS SCALE 1:2,000 SHEET NO. 86

U. S. ENGINEER OFFICE, PORTLAND, OREGON, 1934.

Submitted: *Wm. J. Darr* Approved: *W. H. ...*
 ASSISTANT ENGINEER MAJOR, CORPS OF ENGINEERS

Drawn by GET J. A. M. Transmitted with report dated June 18, 1935



NOTE.
 ELEVATIONS ARE IN FEET AND SHOW DEPTH AT ADOPTED LOW WATER PLANE - LOW IN U. S. WEATHER OUTLAGE GAUGE AT BIPARIA, W. W. L. L.
 ELEVATIONS IN PARENTHESES SHOW (1.7) SHOW HEIGHT ABOVE LOW WATER.
 ELEVATIONS ARE REFERRED TO MEAN SEA LEVEL 1929 U.S.G.S. DATUM 1929 ADJUSTMENT.
 CONTOUR INTERVAL = 5 FT.
 6 FOOT DEPTH CURVE SHOWS THIS
 9 FOOT DEPTH CURVE SHOWS THIS
 CENTER LINE OF PROPOSED CHANNEL SHOWN THIS
 DISTANCE IN FEET FROM CENTER LINE OF MEASUREMENT ON CENTER LINE OF PROPOSED CHANNEL SHOWN THIS

SNAKE RIVER, WASHINGTON - IDAHO MOUTH TO OREGON - WASHINGTON LINE REVIEW REPORT

IN 64 SHEETS SCALE 1:2,000 SHEET NO. 87

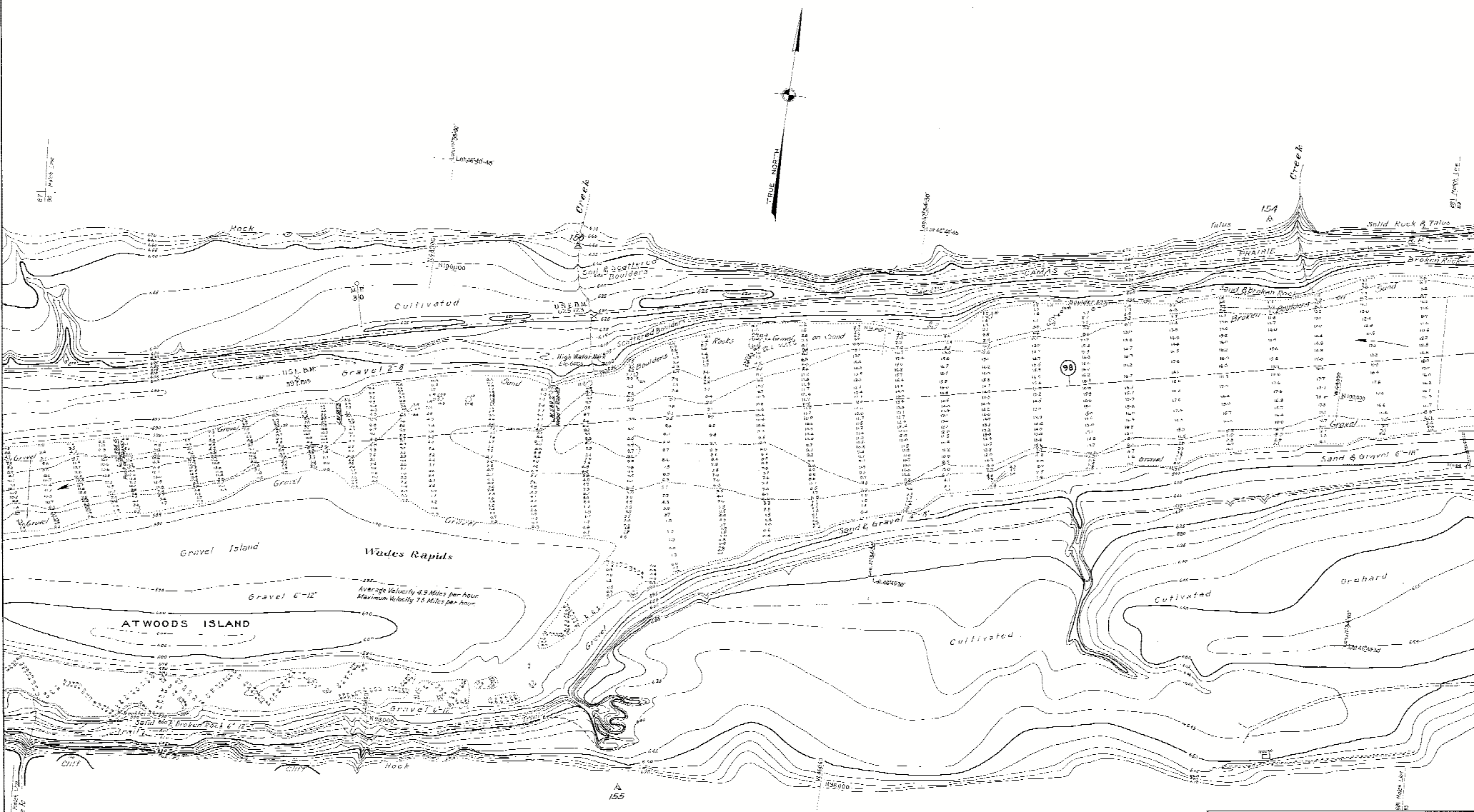
U. S. ENGINEER OFFICE, PORTLAND, OREGON. 1934.

Submitted: *Walter L. Barr* *W. H. ...*
 Associate Engineer Major, Corps of Engineers

Approved: *W. H. ...*
 Major, Corps of Engineers

Drawn by C.E. S.A.M. Transmitted with report dated June 10, 1935

SN-11-4/25
 H-9-2/87



Notes:
 Contours are in feet and show depths at adopted low water stage. 100 on 10 is weathered granite. All sizes M.S.L.
 Heights in parentheses show 100 ft. show flood stage above low water.
 Elevations are referred to mean sea level, 1929, datum from adjustment.
 Contour interval 5 feet.
 6 foot depth curve shown thin.
 8 foot depth curve shown thick.
 Center line of proposed channel shown (H).
 Channel in miles from mouth of river measured on center line of proposed channel shown (S).
 (S)

SNAKE RIVER, WASHINGTON - IDAHO
MOUTH TO OREGON - WASHINGTON LINE
 REVIEW REPORT

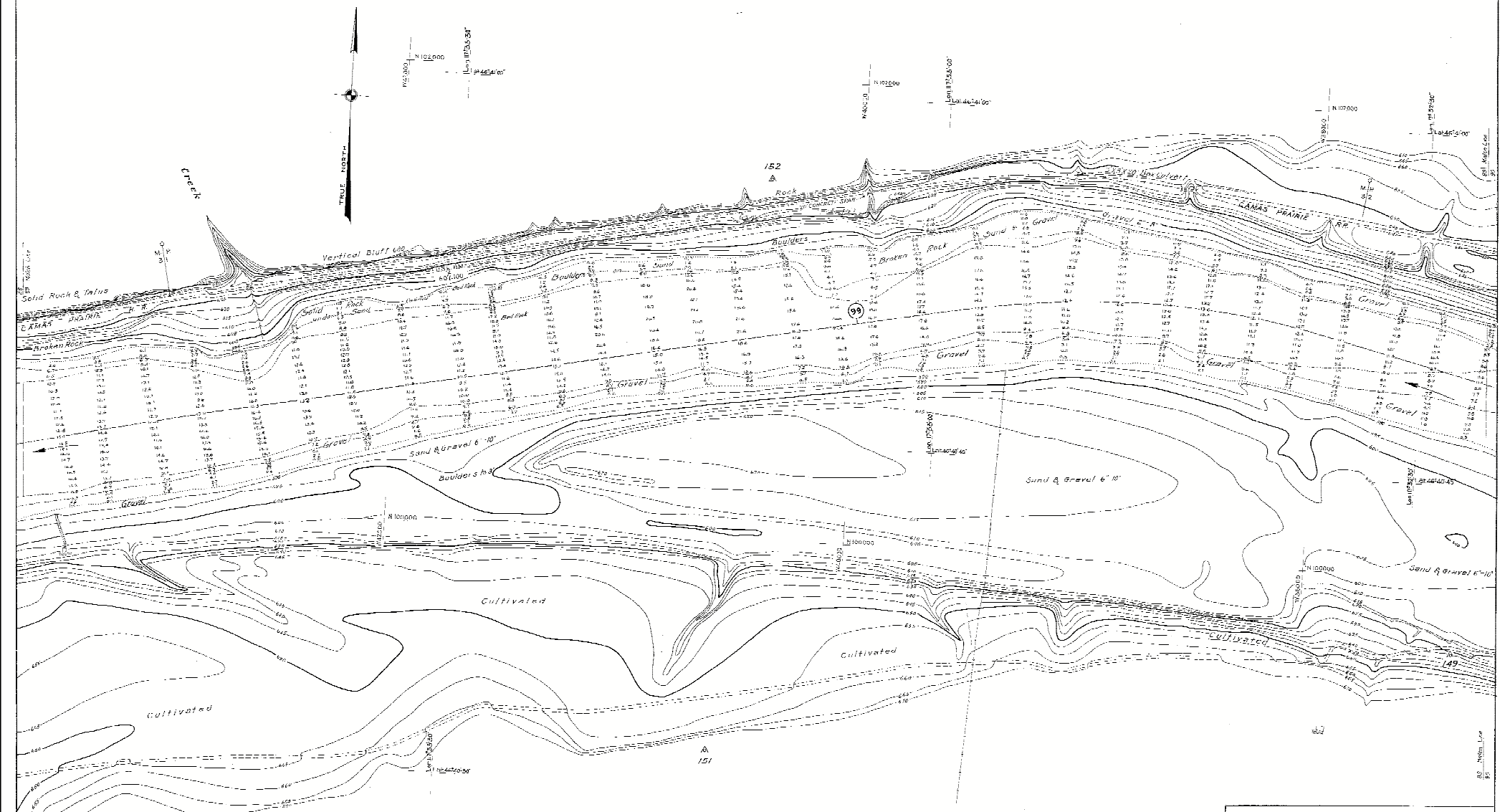
IN 54 SHEETS SCALE 1:2,000 SHEET NO. 68

U. S. ENGINEER OFFICE, PORTLAND, OREGON. 1934.

Submitted: *Allen P. Mason* Approved: *John D. ...*
 Assistant Engineer Major, Corps of Engineers

Drawn by L.W.P. S.A.M. Transmitted with report dated June 10, 1934

SN-1-4/89
 H-9-2/89



NOTE:
 SOUNDINGS ARE IN FEET AND TENTHS AND BATHY DEPTHS AT ADOPTED
 LOW WATER RAISED TWO ON U.S. WEATHER BUREAU GAGE AT BIRRIA,
 WA. G.C.S. W. C. L. I.
 POINTS IN PARALLELS (THIS LINE) SHOW HEIGHT ABOVE LOW WATER.
 ELEVATIONS ARE REFERRED TO MEAN SEA LEVEL - U.S.C. & G. DATUM 1929.
 ADJUSTMENTS:
 CONTOUR INTERVAL 5 FEET.
 4 FEET DEPTH SHOWN BRUSH.
 4 FOOT DEPTH CURVE SHOWN TRAIL.
 CENTER LINE OF PROPOSED CHANNEL SHOWN THIS LINE.
 DISTANCE IN MILES FROM MOUTH OF RIVER MEASURED ON CENTER LINE OF
 PROPOSED CHANNEL SHOWN THIS: (99)

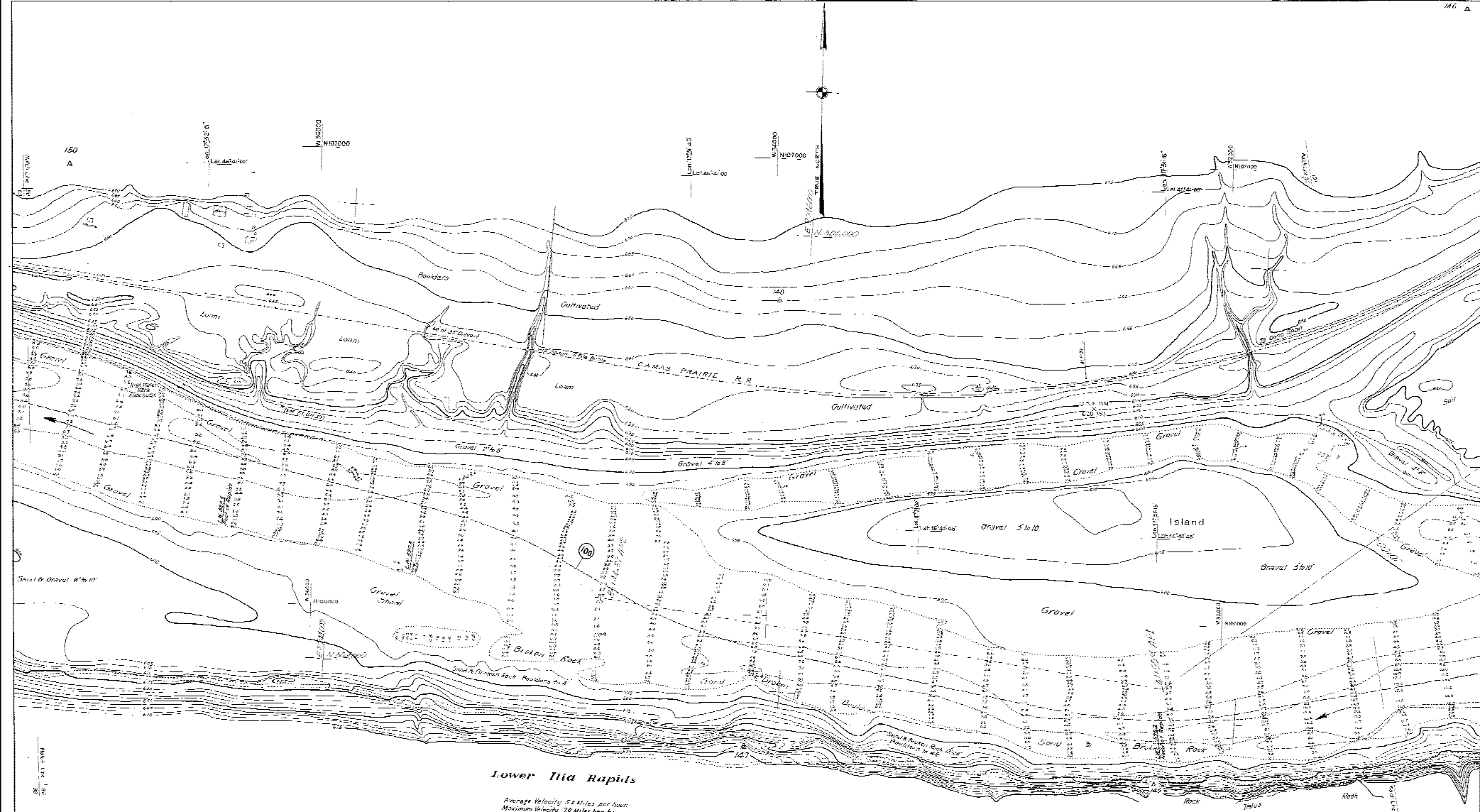
**SNAKE RIVER, WASHINGTON - IDAHO
 MOUTH TO OREGON - WASHINGTON LINE
 REVIEW REPORT**

IN 154 SHEETS SCALE 1:2,000 SHEET NO. 89

U. S. ENGINEER OFFICE, PORTLAND, OREGON, 1934.

Submitted: *Allen P. Barr* Approved: *W. H. ...*

Drawn by E. W. F. 5-2-31 Translated with report dated June 10, 1935



Lower Tia Rapids
 Average Velocity 2 1/2 Miles per hour
 Maximum Velocity 70 Miles per hour

Note: *Upper Canyon Banknotes, 1914, Oct 1914*
 SOUNDINGS ARE IN FEET AND TIDINGS AND SHOW DEPTHS AT ADOPTED LOW WATER PLANE (50' ON U.S. WEATHER BUREAU GAGE AT DENVER, 11, 512' NG. M.S.L.)
 TIDINGS IS PARTIALNESS THIR. (1/2) SHOW HEIGHT ABOVE LOW WATER PLANE
 ELEVATIONS ARE REFERRED TO MEAN SEA LEVEL (1929) UNLESS SHOWN OTHERWISE.
 CONTOUR INTERVAL 5 FEET.
 4 FOOT DEPTH CURVE SHOWN THIR.
 6 FOOT DEPTH CURVE SHOWN THIR.
 CENTER LINE OF PROPOSED CHANNEL SHOWN THIR.
 DISTANCE IN MILES FROM MOUTH OF RIVER MEASURED IN CENTER LINE OF PROPOSED CHANNEL SHOWN THIR. (10)

SNAKE RIVER, WASHINGTON - IDAHO
MOUTH TO OREGON - WASHINGTON LINE
 REVIEW REPORT

IN 15 SHEETS SCALE 1:20,000 SHEET NO. 90

U. S. ENGINEER OFFICE, PORTLAND, OREGON, 1934

Submitted: *Allen E. Davis* Approved: *W. Williams*
 Assistant Engineer Major, Corps of Engineers

Drawn by G.F.T. T.A.M. Transmitted with report dated June 10, 1935

SN 1-478
 H 9-2/30



NOTE: Elevation Contours Corrected October 24, 1927.
 INCLUDING ONE OR TWO FEET AND CORRECTION MADE BY ADJUSTING
 LOW WATER CHANNELS ON ALL WEATHER BOUTON LINES AT SPANNA,
 EL. 212.05 M. S. L. 1.
 FIGURES IN PARENTHESES SHOW FEET SHOW HEIGHT ABOVE LOW WATER.
 ELEVATIONS ARE REFERRED TO MEAN SEA LEVEL U.S.C.G.S. DATUM 1929
 ADJUSTMENT.
 CONTOUR INTERVAL 5 FEET.
 10 FOOT DEPTH CONTOUR SHOWN THICK.
 20 FOOT DEPTH CONTOUR SHOWN THIN.
 CENTER LINE OF SHORTEST CHANNEL SHOWN THICK.
 DISTANCE IN MILES FROM MOUTH OF RIVER MEASURED ON CENTER LINE OF
 SHORTEST CHANNELS SHOWN THIN. (10)

Snake River, Washington - Idaho
MOUTH TO OREGON - WASHINGTON LINE
REVIEW REPORT

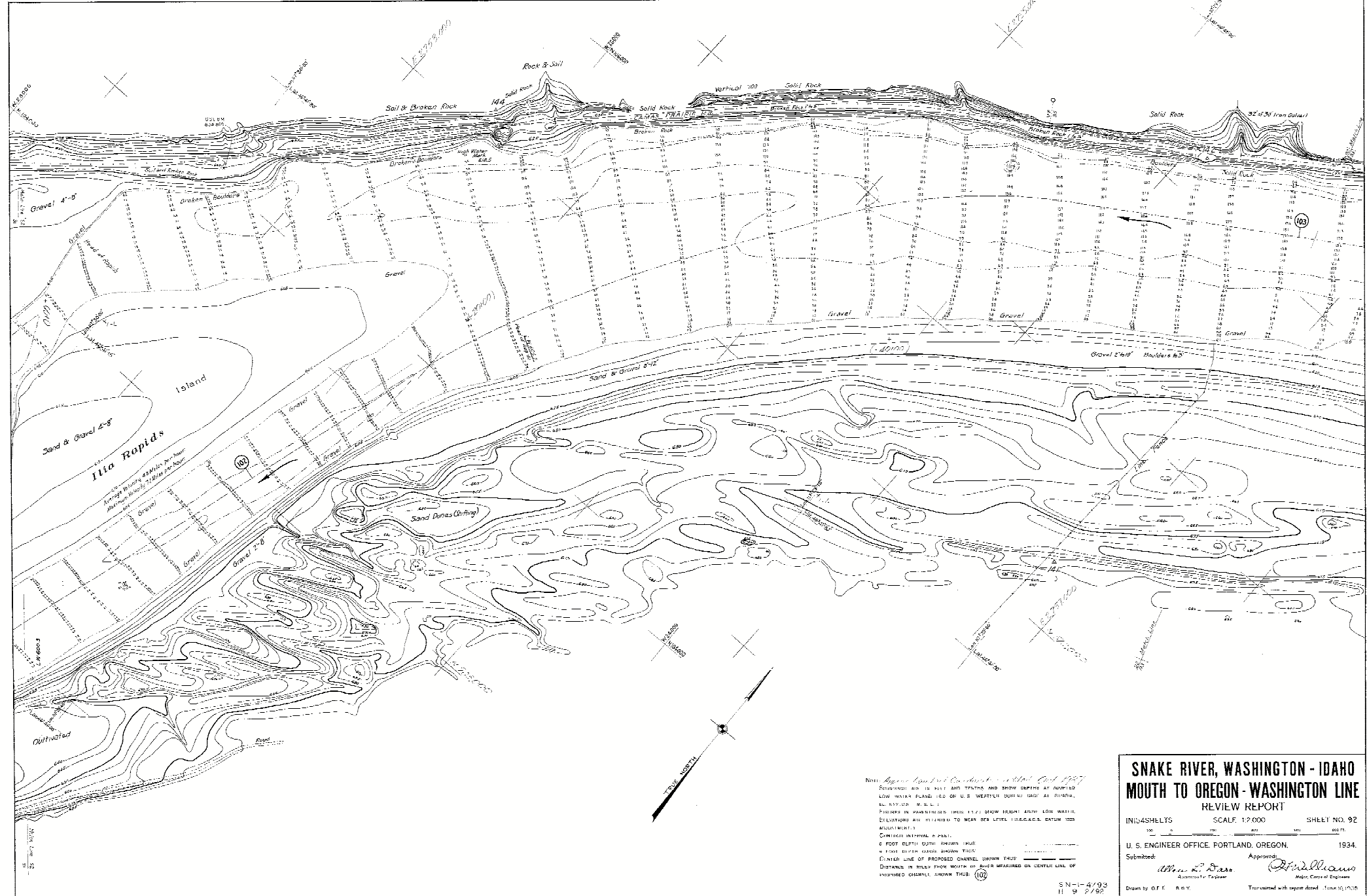
INIS4 SHEETS SCALE 1:2,000 SHEET NO. 91

U. S. ENGINEER OFFICE, PORTLAND, OREGON. 1934.

Submitted by *Allen D. Carr* Approved: *W. H. Williams*
 Associate Engineer Major, Corps of Engineers

Drawn by G.E.T. K.G.Y. Transmitted with report sheet June 10, 1935.

SN-1-4/92
 H-2-2/91



Note: Approximate Low Water Conditions as shown on Sheet 1287
 SOUNDINGS AND SPOTS AND STATIONS AND SHOW DEPTHS AT ADJUSTED
 LOW WATER PLANE (60 ON U.S. WESTERN QUARTER) AS SHOWN,
 EXCEPT WHERE NOTED.
 POINTS ON BANKS AND IN CHANNELS SHOW DEPTHS AT LOW WATER.
 ELEVATIONS ARE REFERRED TO MEAN SEA LEVEL (1929) UNLESS OTHERWISE
 INDICATED.
 CHANNEL INTERVAL 5 FEET.
 5 FOOT DEPTH (DOTTED) SHOWN WITH
 10 FOOT DEPTH (DASHED) SHOWN WITH
 CENTER LINE OF PROPOSED CHANNEL SHOWN WITH
 DISTANCE IN FEET FROM MOUTH OF RIVER MEASURED ON CENTER LINE OF
 PROPOSED CHANNEL, SHOWN WITH (10)

SNAKE RIVER, WASHINGTON - IDAHO
MOUTH TO OREGON - WASHINGTON LINE
 REVIEW REPORT

110345HLTS SCALE: 1:2,000 SHEET NO. 92

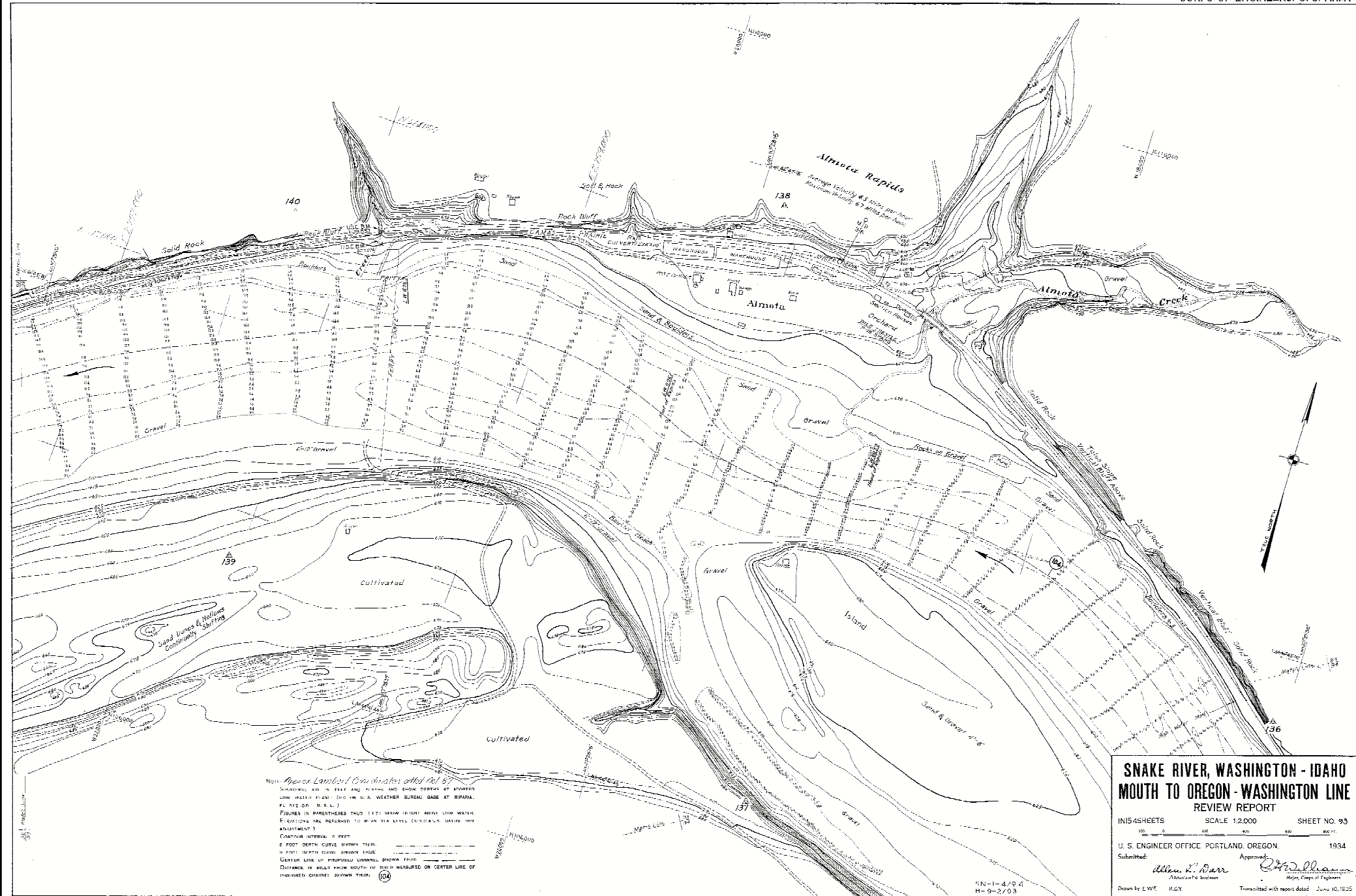
U. S. ENGINEER OFFICE, PORTLAND, OREGON, 1934.

Submitted: Approved: *W. H. Davis*
W. H. Davis Major, Corps of Engineers

Drawn by G.F.F. R.S.Y. Transmitted with report dated June 10, 1934.

SN-1-4793
 11 9 2/80

SN-1-12/92



**SNAKE RIVER, WASHINGTON - IDAHO
 MOUTH TO OREGON - WASHINGTON LINE
 REVIEW REPORT**

115 SHEETS SCALE 1:2,000 SHEET NO. 93

U. S. ENGINEER OFFICE, PORTLAND, OREGON 1954

Submitted: *Allen L. Barr* Approved: *W. H. Williams*
 Assistant P.E. Engineer Major, Corps of Engineers

Drawn by LWF K.G.Y. Transmitted with report dated June 10, 1935

SN-1-12/93



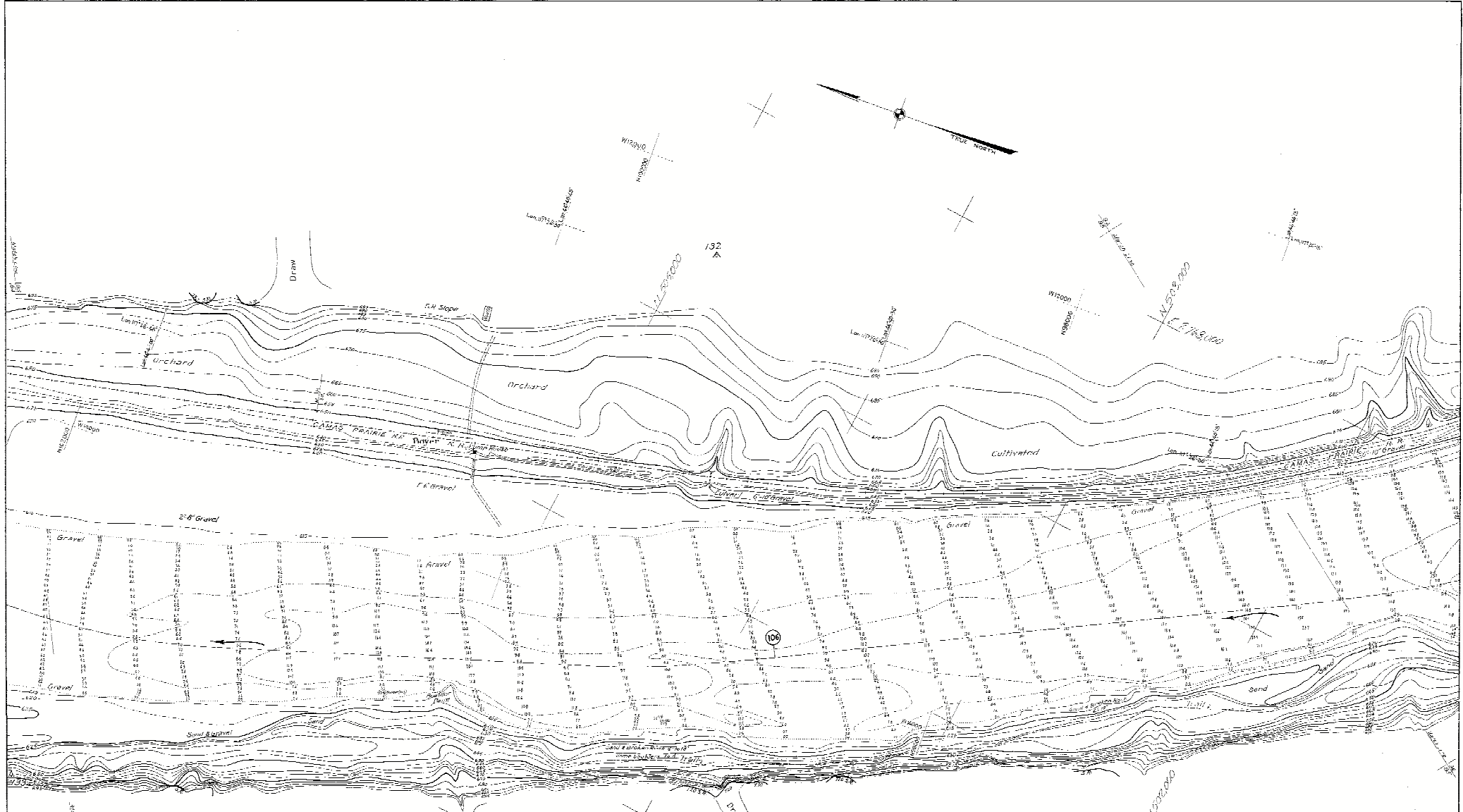
Note: Approximate Projections added Oct 1937
 SQUARES ARE IN FEET AND TENTHS AND SHOW DEPTH AT ADOPTED
 LOW WATER PLANE 100 ON U.S. WEATHER BUREAU GAGE AT HERRING
 ISLAND (M.S.L.)
 ELEVATIONS IN BRACKETED FIGURES SHOW HEIGHT ABOVE LOW WATER
 ELEVATIONS ARE REFERRED TO MEAN SEA LEVEL 1929 C.G.M.S. GIVIN 1930
 ADJUSTMENT.
 CONTOUR INTERVAL 5 FEET.
 5 FOOT DEPTH CURVE SHOWN THUS: _____
 0 FOOT DEPTH CURVE SHOWN THUS: _____
 CENTER LINE OF PROPOSED CHANNEL SHOWN THUS: _____
 DISTANCE IN FEET FROM MOUTH OF RIVER MEASURED ON CENTER LINE OF
 PROPOSED CHANNEL SHOWN THUS: _____

SNAKE RIVER, WASHINGTON - IDAHO
MOUTH TO OREGON - WASHINGTON LINE
REVIEW REPORT

1/15/45 SHEETS SCALE 1:2,000 SHEET NO. 94

U. S. ENGINEER OFFICE, PORTLAND, OREGON. 1934.
 Submitted: *Allen L. Durr* Approved: *W. Williams*
 Associate Engineer Major, Corps of Engineers
 Drawn by: E.M.J. R.B.Y. Transmitted with report dated Jan 16, 1935

SN-1-4/95
 11-9-27/34



NOTE: *Approx. location of boundary between Oct 1937*
 SHADINGS ARE IN FEET AND TENTHS AND SHOW DEPTH AT ADOPTED
 LOW WATER PLANE (AND LOW U.S. MEASURED BOUNDARY AT NORMAL,
 54.129 AS M.A.S.)
 FIGURES IN PARENTHESES THUS (177) SHOW HIGH AT LOW WATER,
 FIGURES ARE REFERRED TO MEAN SEA LEVEL (USUAL) DATUM AND
 ADJUSTMENT.
 CONTOUR INTERVAL 5 FEET.
 6 FOOT DEPTH CURVE SHOWN THUS
 8 FOOT DEPTH CURVE SHOWN THUS
 CENTER LINE OF PROPOSED CHANNEL SHOWN THUS
 DISTANCE IN FEET FROM CENTER LINE OF CENTER LINE OF
 PROPOSED CHANNEL SHOWN THUS (106)

Notes 207 1-20
map showing...

**SNAKE RIVER, WASHINGTON - IDAHO
 MOUTH TO OREGON - WASHINGTON LINE
 REVIEW REPORT**

INS 45 SHEETS SCALE F. 1:2,000 SHEET NO. 95

U. S. ENGINEER OFFICE, PORTLAND, OREGON, 1934.

Submitted: *William D. Barr* Approved: *William D. Barr*
 Associate Engineer Major, Corps of Engineers

Drawn by EWF, RGN Transmitted with report dated June 10, 1935.

S.N.-1 2795
 11-9-2795