

Note:
 SOUNDINGS ARE IN FEET AND FATHOMS AND SNOW DEPTHS AT ADOPTED LOW WATER PLANE (ON U.S. WESTERN SURVEY GAUGE AT RIVER).
 EL. 512.05 (M.S.L.)
 PROPOSED CHANNEL WIDTHS (100 FT.) SHOWN THROUGH ABOVE LOW WATER ELEVATION ARE REFERRED TO MEAN SEA LEVEL (U.S.C.G.S. DATUM 100 ADJUSTMENT.)
 CONTOUR INTERVAL 5 FEET.
 1000' DEPTH SOUNDING MARK.
 5 FOOT DEPTH SOUNDING MARK.
 CENTER LINE OF PROPOSED CHANNEL SHOWN THUS: ---
 DEPTHS IN WELLS FROM MOUTH OF RIVER MEASURED ON CENTER LINE OF PROPOSED CHANNEL SHOWN THUS: (12)

SNAKE RIVER, WASHINGTON - IDAHO MOUTH TO OREGON - WASHINGTON LINE
 REVIEW REPORT
 IN 545 SHEETS SCALE 1:2,000 SHEET NO. 12
 U. S. ENGINEER OFFICE, PORTLAND, OREGON, 1934.
 Submitted: *Allen H. Dues* Associate Engineer
 Approved: *Ed. J. Williams* Major, Corps of Engineers
 Drawn by: C.A.D. R.C.B. Transmitted with report dated June 10, 1935.

SN-1-4/18
 H-8-2/12

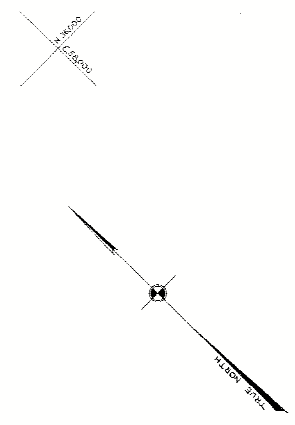
High - Approx. 41.375
Uncollected



Three Island Bend Rapids

Average Intensity 3.3 Miles Per Hour
Maximum Velocity 6.2 Miles Per Hour

Stack & Argo
Falling Unavailable



NOTE:
 SOUNDINGS ARE IN FEET AND TENTHS AND SHOW DEPTHS AT ASSUMED LOW WATER PLACES (1) ON U.S. WATER BUREAU GAGE AT PUSHA (14 512 05 (14 512 05)).
 FIGURES IN PARENTHESES THUS (17) SHOW HEIGHT ABOVE LOW WATER. ELEVATIONS ARE REFERRED TO MEAN SEA LEVEL (FURC. C. & S. DATUM 1900 ADJUSTMENT).
 CURVES INTERNAL 0 FEET.
 0 FOOT DEPTH CURVE SHOWS TRUE 0 FOOT DEPTH CURVE SHOWN TRUE.
 CENTER LINE OF PROPOSED CHANNEL SHOWN (10A).
 DISTANCE IN MILES FROM MOUTH OF RIVER MEASURED ON CENTER LINE OF PROPOSED CHANNEL SHOWN (10B).

Snake River, Washington - Idaho Mouth to Oregon - Washington Line

REVIEW REPORT

IN 154 SHEETS SCALE 1:2,000 SHEET NO. 13

U. S. ENGINEER OFFICE, PORTLAND, OREGON. 1934.
 Submitted: Approved:

Drawn by: C. A. ... Associate Engineer
 Checked by: ... Chief of Section

SN-1-12/14
 H-9-2/13

Revised with report dated June 10 1935



NOTE:
 SOUNDINGS ARE IN FEET AND TENTHS AND SHOW DEPTHS AT ADOPTED LOW WATER PLANE (ON U. S. WATER BUREAU GAUGE AT NIPIA, EL. 812.05 M. S. L.)
 FIGURES IN PARENTHESIS () SHOW HEIGHT ABOVE LOW WATER.
 ELEVATIONS ARE ADJUSTED TO MEAN SEA LEVEL. (ADJUSTMENT FOR ALIGNMENT.)
 CONTOUR INTERVAL, 5 FEET.
 6 FOOT DEPTH QUAYS SHOWN THUS: [Symbol]
 4 FOOT DEPTH QUAYS SHOWN THUS: [Symbol]
 CENTER LINE OF PROPOSED CHANNEL SHOWN THUS: [Symbol]
 DISTANCE IN MILES FROM MOUTH OF RIVER MEASURED ON CENTER LINE OF PROPOSED CHANNEL SHOWN THUS: (14)

SNAKE RIVER, WASHINGTON - IDAHO MOUTH TO OREGON - WASHINGTON LINE
 REVIEW REPORT

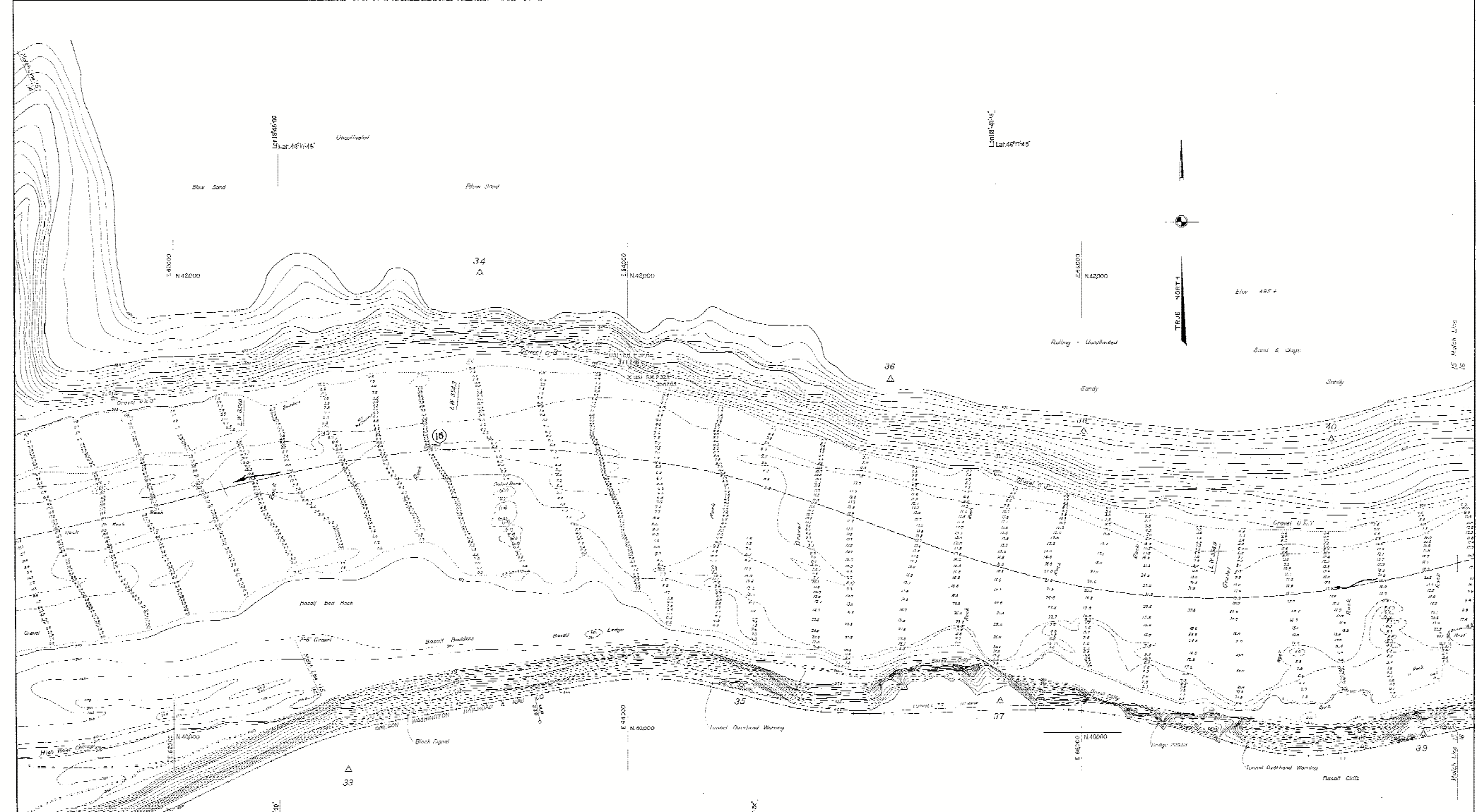
INIS4683:15 SCALE 1:2000 SHEET NO. 14

U. S. ENGINEER OFFICE, PORTLAND, OREGON, 1934.

Submitted: [Signature] Approved: [Signature]
 SUPERVISOR ENGINEER CHIEF OF ENGINEERS

SN-1-4/10
 H-9-2/14

Drawn by C.A.B. R.C.D. Transmitted with report dated June 10, 1935



NOTE:
 ELEVATIONS ARE IN FEET AND TENTHS AND SHOW DEPTHS AT ADOPTED
 LOW WATER PLANE (ON U. S. WEATHER BUREAU GAGE AT RIPARIA,
 ST. 516.05 M. R. L.)
 FIGURES IN PARENTHESES THRU () SHOW IN FEET ABOVE LOW WATER.
 ELEVATIONS ARE INDICATED BY WEAVER LEVEL MESSAGES DATUM 1929
 ADJUSTMENT.
 CONTOUR INTERVAL: 5 FEET
 5 FOOT DEPTH CURVE SHOWN THRU
 10 FOOT DEPTH CURVE SHOWN THRU
 CENTER LINE OF PROPOSED CHANNEL SHOWN THRU
 DISTANCE IN MILES FROM MOUTH OF RIVER MEASURED ON CENTER LINE OF
 PROPOSED CHANNEL SHOWN THRU (15)

SNAKE RIVER, WASHINGTON - IDAHO MOUTH TO OREGON - WASHINGTON LINE REVIEW REPORT

IN1545HEE15 SCALE 1:2000 SHEET NO. 15

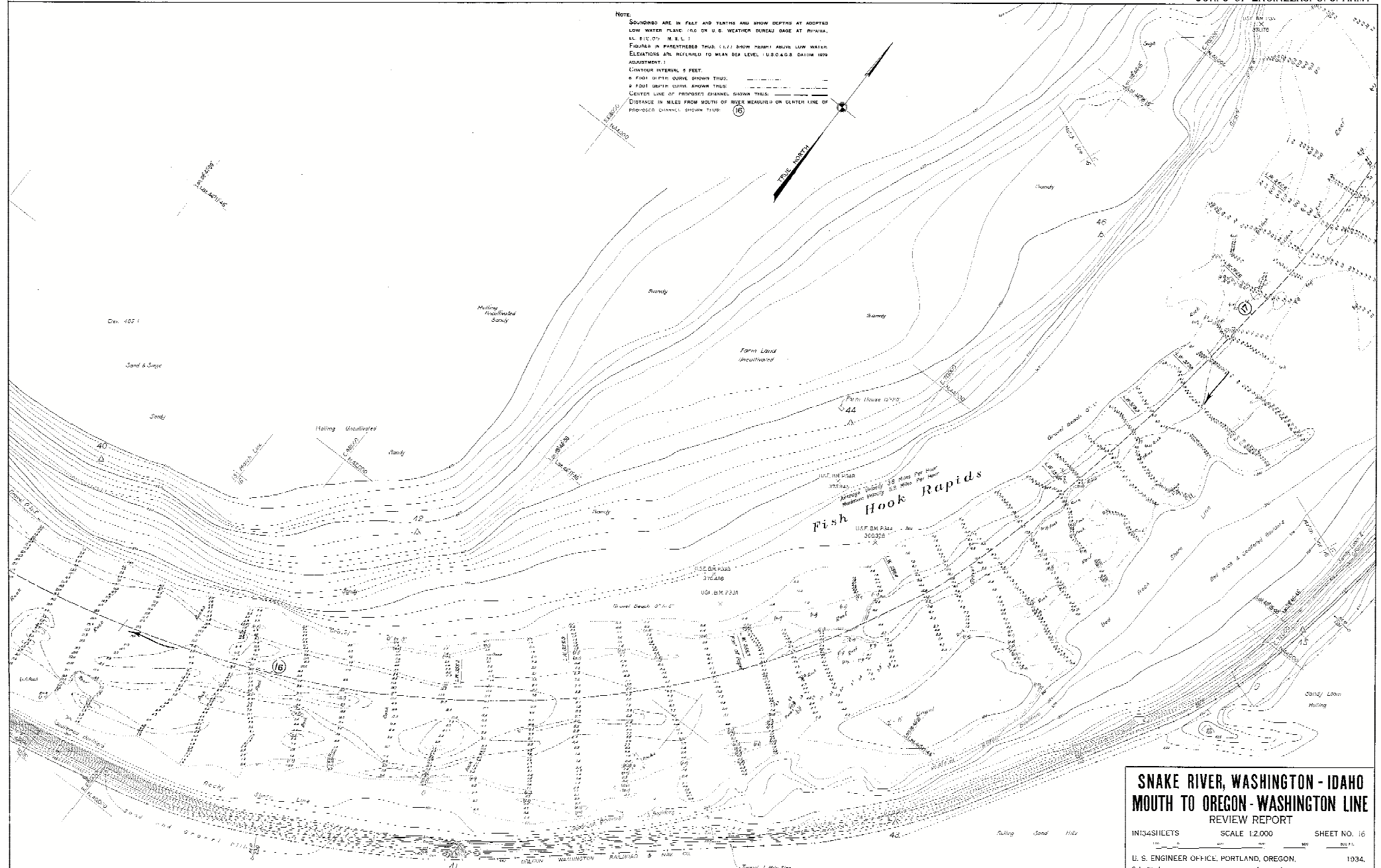
U. S. ENGINEER OFFICE, PORTLAND, OREGON. 1934.

Submitted: _____ Approved: _____
 (Signature) (Signature)
 Assistant Engineer Chief of Engineers

Drawn by: CAB: LMR
 Transmitted with report dated: July 16, 1935

SN-1-1/15
H-9-2/15

NOTE:
 SOUNDINGS ARE IN FEET AND TENTHS AND SHOW DEPTHS AT ADJUSTED LOW WATER PLANE (AS ON U. S. WEATHER BUREAU GAGE AT PINKHAM, 44.56 FEET "M. S. L.").
 FIGURES IN PARENTHESES THUS (1.7) SHOW HEIGHT ABOVE LOW WATER. ELEVATIONS ARE REFERRED TO MEAN SEA LEVEL (U. S. C. & G. S. DATUM 1829 ADJUSTMENT).
 CHANNEL INTERVAL: 5 FEET.
 6 FOOT DEPTH CURVE SHOWN THUS: [---]
 9 FOOT DEPTH CURVE SHOWN THUS: [---]
 CENTER LINE OF PROPOSED CHANNEL SHOWN THUS: [---]
 DISTANCE IN FEET FROM MOUTH OF RIVER MEASURED ON CENTER LINE OF PROPOSED CHANNEL SHOWN THUS: [---]



Fish Hook Rapids
 USF BM 2444 360328
 USF BM 2445 360328
 USF BM 2446 360328
 USF BM 2447 360328
 USF BM 2448 360328
 USF BM 2449 360328
 USF BM 2450 360328
 USF BM 2451 360328
 USF BM 2452 360328
 USF BM 2453 360328
 USF BM 2454 360328
 USF BM 2455 360328
 USF BM 2456 360328
 USF BM 2457 360328
 USF BM 2458 360328
 USF BM 2459 360328
 USF BM 2460 360328
 USF BM 2461 360328
 USF BM 2462 360328
 USF BM 2463 360328
 USF BM 2464 360328
 USF BM 2465 360328
 USF BM 2466 360328
 USF BM 2467 360328
 USF BM 2468 360328
 USF BM 2469 360328
 USF BM 2470 360328
 USF BM 2471 360328
 USF BM 2472 360328
 USF BM 2473 360328
 USF BM 2474 360328
 USF BM 2475 360328
 USF BM 2476 360328
 USF BM 2477 360328
 USF BM 2478 360328
 USF BM 2479 360328
 USF BM 2480 360328
 USF BM 2481 360328
 USF BM 2482 360328
 USF BM 2483 360328
 USF BM 2484 360328
 USF BM 2485 360328
 USF BM 2486 360328
 USF BM 2487 360328
 USF BM 2488 360328
 USF BM 2489 360328
 USF BM 2490 360328
 USF BM 2491 360328
 USF BM 2492 360328
 USF BM 2493 360328
 USF BM 2494 360328
 USF BM 2495 360328
 USF BM 2496 360328
 USF BM 2497 360328
 USF BM 2498 360328
 USF BM 2499 360328
 USF BM 2500 360328

**SNAKE RIVER, WASHINGTON - IDAHO
 MOUTH TO OREGON - WASHINGTON LINE
 REVIEW REPORT**

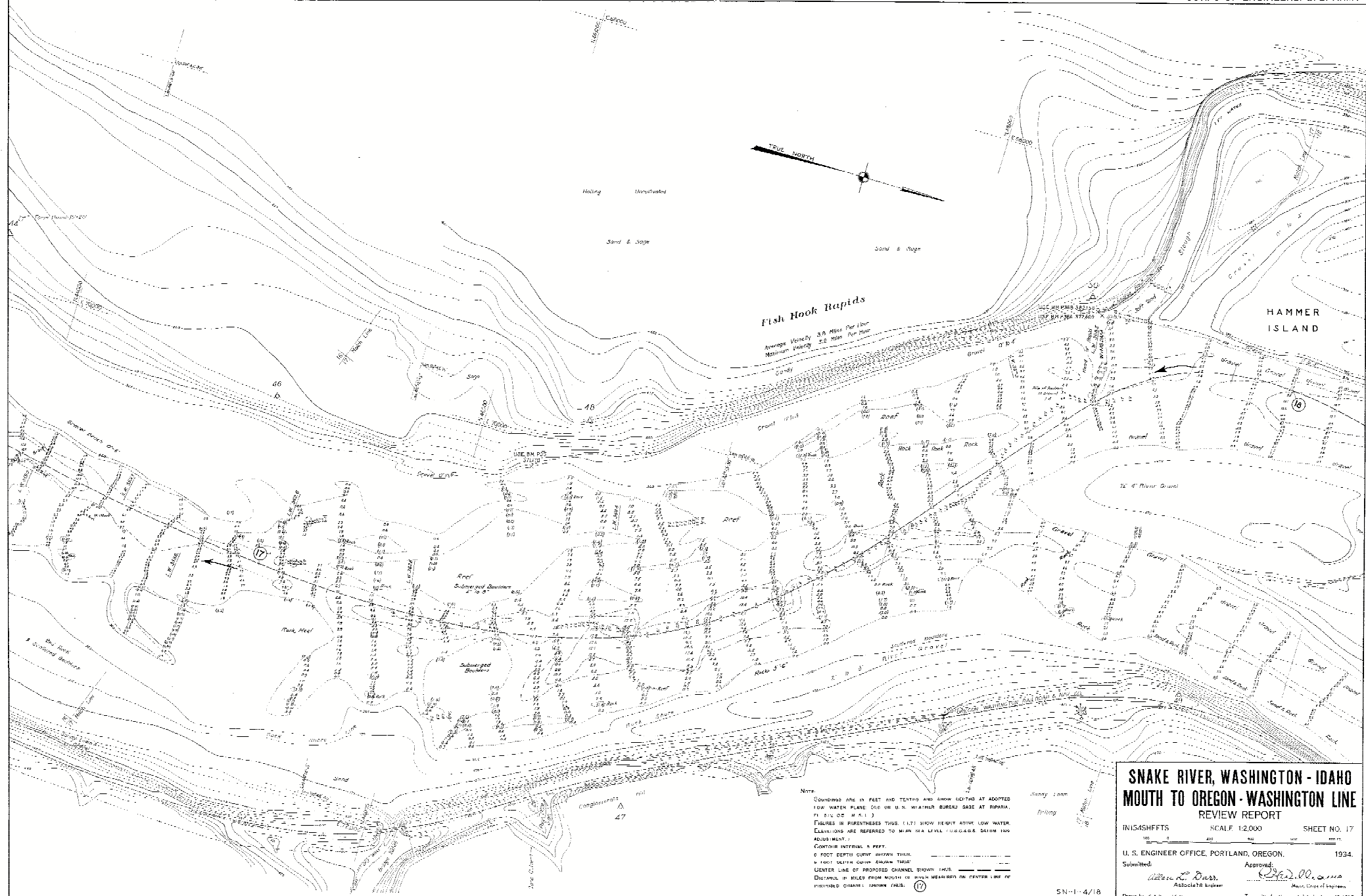
IN 1345 SHEETS SCALE 1:2,000 SHEET NO. 16

L. S. ENGINEER OFFICE, PORTLAND, OREGON, 1934.

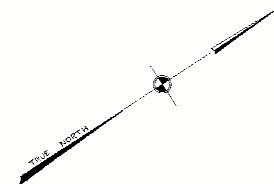
Submitted: *William R. Dorr* Associate Engineer
 Approved: *W. H. Williams* Major, Corps of Engineers

Drawn by G. A. B. J. G. P. Transmitted with report dated June 10, 1935.

SN-1-4/17
 H-9-2/16



High Country is Contoured
Approx. Based on 1908 Map, U. S. G. S.

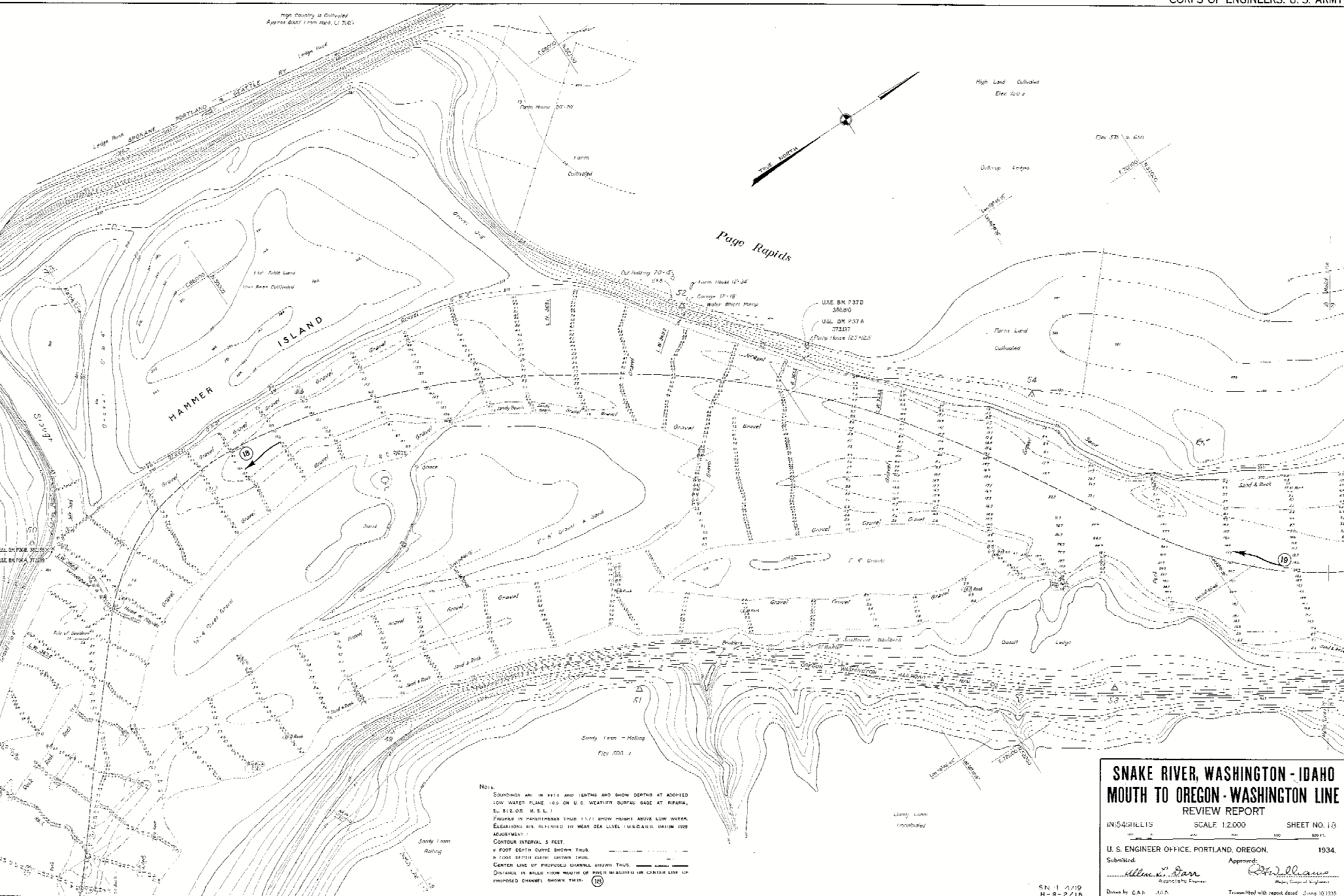


High Land Contours
Elev. 2000



Page Rapids

HAMMER ISLAND

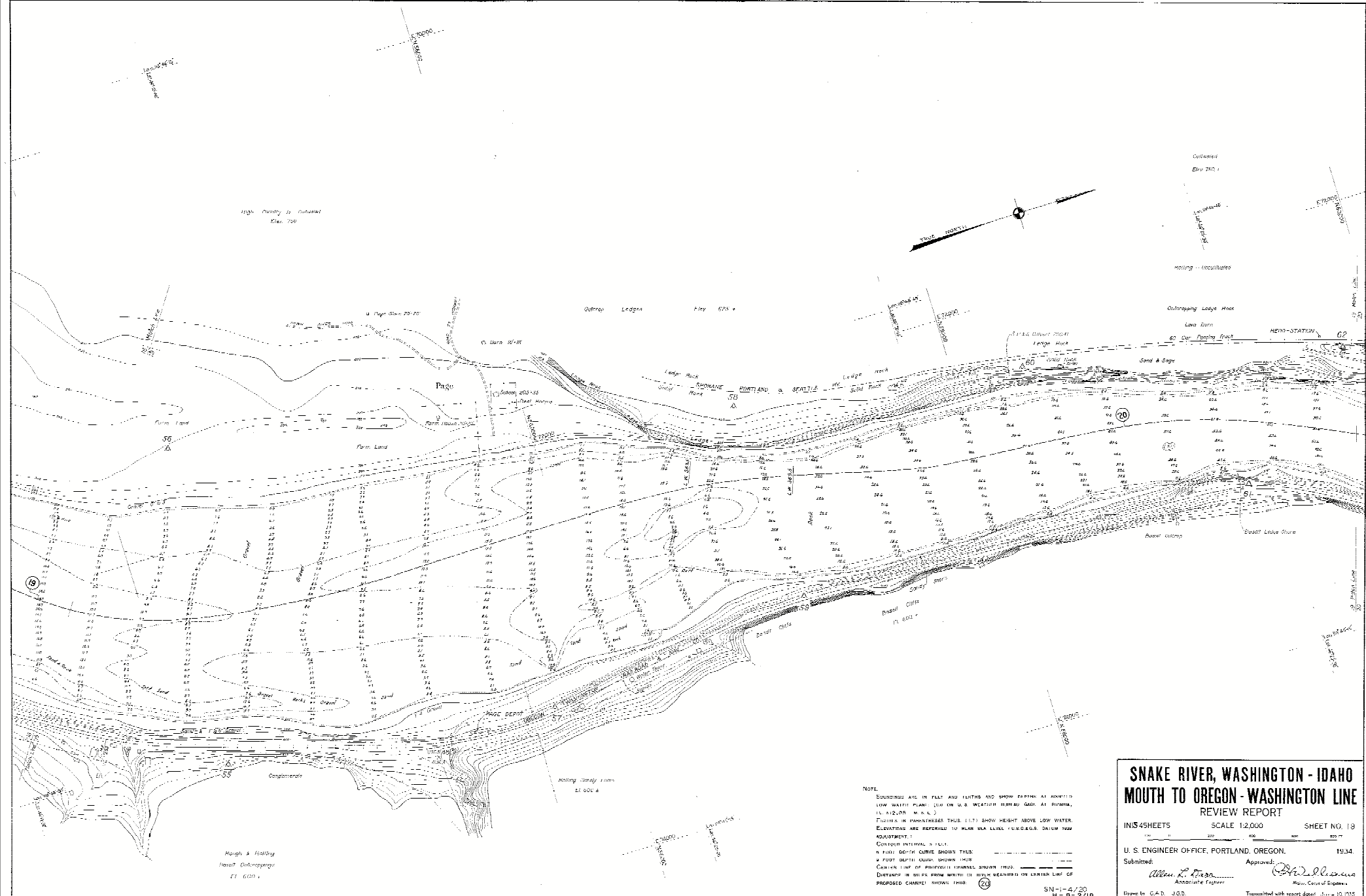


NOTE:
 SOUNDINGS ARE IN FEET AND LENGTHS AND SHOW DEPTHS AT ADOPTED
 LOW WATER PLANE, 1.00 ON U. S. WEATHER BUREAU GAGE AT RIPARIA,
 E. 812.05 M. S. L.
 DEPTHS IN PARALLELS THUS 11.77 SHOW HEIGHTS ABOVE LOW WATER.
 ELEVATIONS ARE REFERRED TO MEAN SEA LEVEL (U. S. CANTON DATUM 1929
 ADJUSTMENT).
 CONTOUR INTERVAL, 5 FEET.
 5 FOOT DEPTH CURVE SHOWN THUS: _____
 5 FOOT DEPTH CURVE SHOWN THUS: _____
 CENTER LINE OF PROPOSED CHANNEL SHOWN THUS: _____
 DISTANCES IN FEET FROM MOUTH OF RIVER MEASURING IN CENTER LINE UP
 PROPOSED CHANNEL SHOWN THUS: (10)

**SNAKE RIVER, WASHINGTON - IDAHO
 MOUTH TO OREGON - WASHINGTON LINE
 REVIEW REPORT**

IN: 5491115 SCALE 1:2,000 SHEET NO. 13

U. S. ENGINEER OFFICE, PORTLAND, OREGON, 1934.
 Submitted: _____ Approved: _____
 Drawn by: C.A. J.G.P. Transmitted with report dated June 10 1935



NOTE:
 SOUNDINGS ARE IN FEET AND FATHOMS AND SHOW DEPTHS AT ADMITTED LOW WATER PLANE 2.00 ON U.S. WESTERN BUREAU GAGE AT PORTLAND, 11, 112.00 M.S.L.
 FATHOMS IN PARENTHESES THUS (11.7) SHOW HEIGHT ABOVE LOW WATER. ELEVATIONS ARE REFERRED TO MEAN SEA LEVEL (U.S.C.G.S. DATUM 1929 ADJUSTMENT).
 CONTOUR INTERVAL 5 FEET.
 A FINE DOTTED CURVE SHOWN THIS IS A FOOT DEPTH CURVE SHOWN UNDER CURVES THAT OF SHIPMENTS SPANSEL SHOWN THIS DISTANCE IN FEET FROM MOUTH IS MEAS. MEASURED ON CENTER LINE OF PROPOSED CHANNEL SHOWN THIS (20)

SNAKE RIVER, WASHINGTON - IDAHO
MOUTH TO OREGON - WASHINGTON LINE
 REVIEW REPORT

IN 35 SHEETS SCALE 1:2,000 SHEET NO. 19

U. S. ENGINEER OFFICE, PORTLAND, OREGON. 1934.

Submitted: *Allen L. Green* Associate Engineer
 Approved: *W. H. Williams* Major, Corps of Engineers

Drawn by: C. A. D. J. O. D.
 Transmitted with report dated: June 10, 1935



NOTE:
 SOUNDINGS ARE IN FEET AND TENTHS AND SHOW DEPTHS AT MARKED LOW WATER PLANE 100 ON U.S. WATERS SURVEY DATA AT BURNS, OREGON, 1882.
 FIGURES IN UNDEVELOPED THICK LINES SHOW HEIGHT ABOVE LOW WATER, INCLUDING AN INCHES TO MEAN SEA LEVEL (ELEVATED DATA TO ANGLE IN FEET).
 CONTOUR INTERVAL: 5 FEET
 5 FOOT DEPTH CURVE SHOWN THIN
 1 FOOT DEPTH CURVE SHOWN THICK
 CENTER LINE OF PROPOSED CHANNEL SHOWN THIN
 DISTANCE IN FEET FROM MOUTH OF RIVER MEASURED ON CENTER LINE OF UNDEVELOPED CHANNEL SHOWN THIN

SNAKE RIVER, WASHINGTON - IDAHO
MOUTH TO OREGON - WASHINGTON LINE
 REVIEW REPORT

IN 14 SHEETS SCALE 1:2,000 SHEET NO. 21

U. S. ENGINEER OFFICE, PORTLAND, OREGON. 1934

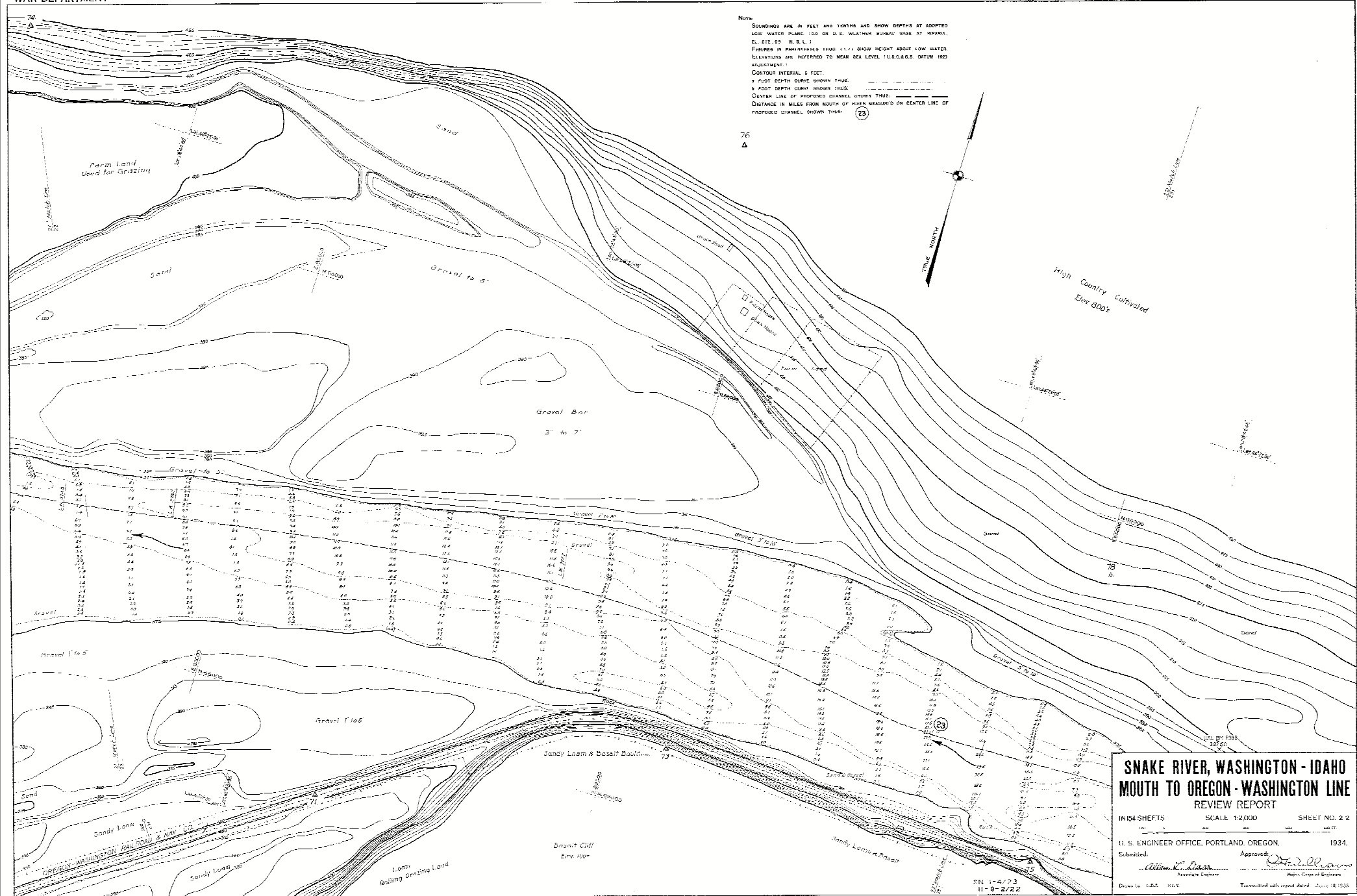
Submitted: *Walter Darr*
 Associate Engineer

Approved: *Walter Darr*
 Major, Corps of Engineers

Drawn by: C. J. JON.

Transmitted with report dated June 10, 1935

NOTE:
 SOUNDINGS ARE IN FEET AND TENTHS AND SHOW DEPTHS AT ADOPTED
 LOW WATER PLANE 1.00 ON U. S. WEATHER BUREAU GAGE AT SPANIA,
 EL. 612.00 M. S. L.
 PROFILES IN PARALLELS THUS (---) SHOW HEIGHT ABOVE LOW WATER
 ELEVATIONS ARE REFERRED TO MEAN SEA LEVEL 1885 & C.A.R.S. OBTAIN 1933
 ADJUSTMENT.
 CONTOUR INTERVAL 5 FEET.
 5 FOOT DEPTH CURVE SHOWN THUS (---)
 5 FOOT DEPTH CURVE SHOWN THUS (---)
 CENTER LINE OF PROPOSED CHANNEL SHOWN THUS (---)
 DISTANCE IN MILES FROM MOUTH OF RIVER MEASURED ON CENTER LINE OF
 PROPOSED CHANNEL SHOWN THUS (---)



**Snake River, Washington - Idaho
 Mouth to Oregon - Washington Line
 Review Report**

INIS4 SHEETS SCALE 1:2,000 SHEET NO. 2 2

U. S. ENGINEER OFFICE, PORTLAND, OREGON, 1934.

Submitted: *William K. Dean* Associate Engineer
 Approved: *W. H. Lawrence* Major, Corps of Engineers

Drawn by: G. E. H. G. Transmitted with report dated June 18, 1935.

SN-1-4773
 11-9-21/22



1. DIMENSIONS ARE IN FEET AND TENTHS AND SHOW DEPTHS AT ASSUMED LOW WATER PLANE (0.0 ON U.S. WATERFUR SURFACE GAGE AT RIPARIAN, EL. 912.05 M.S.L.)
 2. FIGURES IN PARENTHESES (100, 150) SHOW HEIGHT ABOVE LOW WATER.
 3. ELEVATIONS ARE REFERRED TO MEAN SEA LEVEL (1929) UNLESS OTHERWISE ADJUSTED.
 4. CONTOUR INTERVAL 5 FEET.
 5. 6 FOOT DEPTH CURVE SHOWN THUS: ---
 6. 1:000 SLOPE CURVE SHOWN THUS: ---
 7. CENTER LINE OF PROPOSED CHANNEL SHOWN THUS: ---
 8. DISTANCE IN MILES FROM MOUTH OF RIVER MEASURED ON CENTER LINE OF PROPOSED CHANNEL SHOWN THUS: (24)

Snake River, Washington - Idaho Mouth to Oregon - Washington Line
REVIEW REPORT
 IN 54 SHEETS SCALE 1:2,000 SHEET NO. 23
 U. S. ENGINEER OFFICE, PORTLAND, OREGON, 1934.
 Submitted: *Allen T. Darr* Approved: *Wm. D. Williams*
Assistant Engineer Major, Corps of Engineers
 Drawn by: BR: ROY
 Transmitted with report dated June 10, 1935