

THE LOS ANGELES COUNTY

# BUSINESS SOLUTIONS PORTFOLIO

2019





## LOS ANGELES COUNTY WELCOMES YOUR BUSINESS!

LA County values the hard work it takes to establish and grow a business. With its \$32.5 billion budget and robust offering of business services, LA County fosters a business-friendly environment. We have designed the Business Solutions Portfolio as a comprehensive guide to all of the resources available to help you start, manage, and grow your business. Inside this portfolio you will find information about the economy in LA County, descriptions of programs and services, website links to additional information, and contact information to get you to the right place.

Thank you for choosing LA County as the home for your business! We look forward to working with you to help your business flourish!

# TABLE OF CONTENTS

## **County Economic Overview • 1**

## **Business Advisory Services • 11**

- General Business Consultation
- Procurement Consultation
- Informational Seminars & Workshops

## **Permits & Regulations • 25**

- Permits, Licenses & Registrations
- Regulations & Enforcement

## **Access to Capital • 51**

## **Recruiting & Hiring • 57**

- Workforce Planning
- Recruiting & Placement Services
- Tax Credits & Incentives

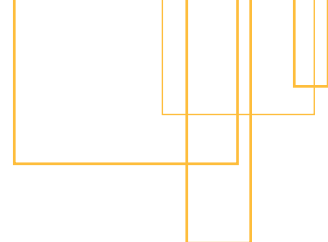
## **Workforce Training • 63**

## **Layoff Aversion & Management • 67**

## **Specialized Programs & Services • 73**

## **County Departments • 79**

## **Other Programs • 89**



## COUNTY ECONOMIC OVERVIEW

LA County has various tools to help you navigate the local economy such as the Economic Development Scorecard. The Scorecard measures the progress of Los Angeles County's economic development programs including workforce development, business assistance, loan programs, financial assistance, and capital development.

The Scorecard provides a snapshot of the local economy and seeks to demonstrate how County programs can be informed by the economic and demographic characteristics of the region. Highlights from the Scorecard are below.

To see the full report, visit:  
<http://economicdevelopment.lacounty.gov/scorecards/>



COUNTY OF LOS ANGELES

# ECONOMIC DEVELOPMENT SCORECARD

FISCAL YEAR 2017 - 2018



## Is your business in a high-growth sector?

Businesses in high-growth sectors are considered to be the most competitive and rapidly growing in the local economy. The Economic Development Scorecard highlights the following industries as being the highest growing sectors in LA County:



Health Care Services



Manufacturing



Trade & Logistics



Leisure & Hospitality



Film & Digital Media



Bioscience



Construction

LA County can also provide you with up-to-date information on the regional economy. This information can help you identify opportunities for your business within the various LA County areas. Here is a sampling of the information by Supervisorial District and overall as a County.

Contact the Department of Workforce Development, Aging and Community Services (WDACS) at [bizdev@wdacs.lacounty.gov](mailto:bizdev@wdacs.lacounty.gov) for more recent and customized content that can include:

- Economic historic & projected trends
- Population demographics
- Industry, business and workforce details
- And more!



# Los Angeles County Overview



## 1ST DISTRICT • HILDA L. SOLIS



To view district map visit:  
[http://file.lacounty.gov/SDSInter-lac/1031536\\_1stDistrictMap.pdf](http://file.lacounty.gov/SDSInter-lac/1031536_1stDistrictMap.pdf)

	SD1
Total Population	2.03 million
% Hispanic Origin	72.50%
Income per Capita	\$18,257
Median Age	32.9
Employed Residents	865,690
Bachelor's or Higher	18.90%
Household income	see chart
Total Households	562,800
Residents below Poverty Line	21.60%
Median HH income	\$45,888
Total Jobs	935,970
Jobs held by residents of SD	37.60%
Jobs-Population Ratio	0.46

### Top Growing Industries



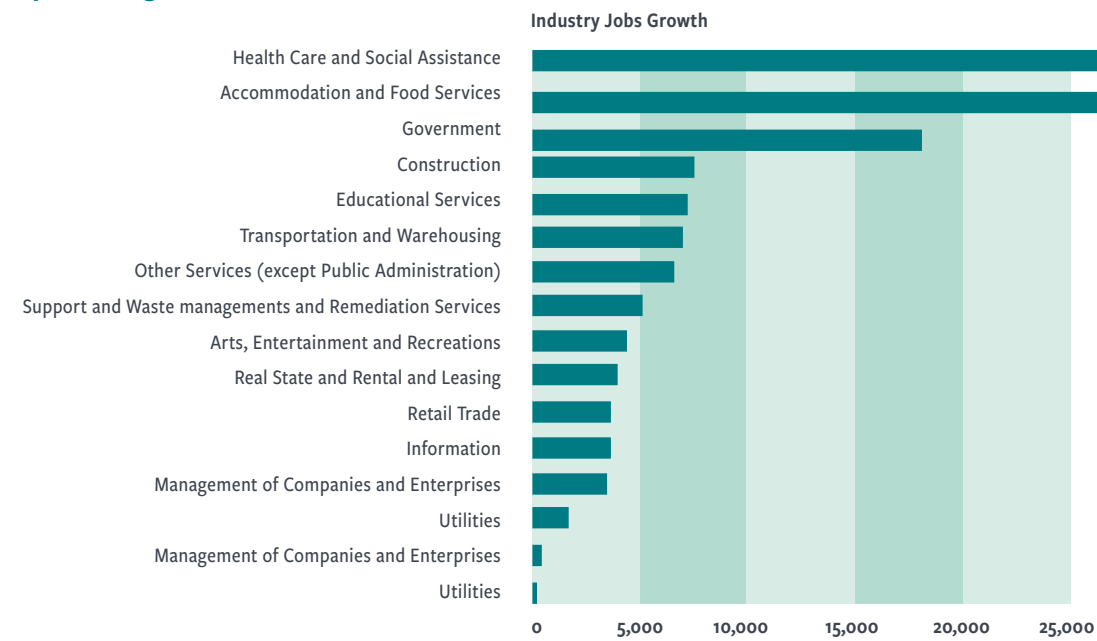
## 2ND DISTRICT • MARK RIDLEY-THOMAS



	SD1
Total Population	2.04 million
% Hispanic Origin	56%
Income per Capita	20,304
Median Age	32.8
Employed Residents	890,690
Bachelor's or Higher	22.30%
Household income	see chart
Total Households	631,550
Residents below Poverty Line	23.70%
Median HH income	\$45,888
Total Jobs	540,020
Jobs held by residents of SD	32.60%
Jobs-Population Ratio	0.26

To view district map visit:  
[http://file.lacounty.gov/SDSInter-lac/1031538\\_2ndDistrictMap.pdf](http://file.lacounty.gov/SDSInter-lac/1031538_2ndDistrictMap.pdf)

### Top Growing Industries



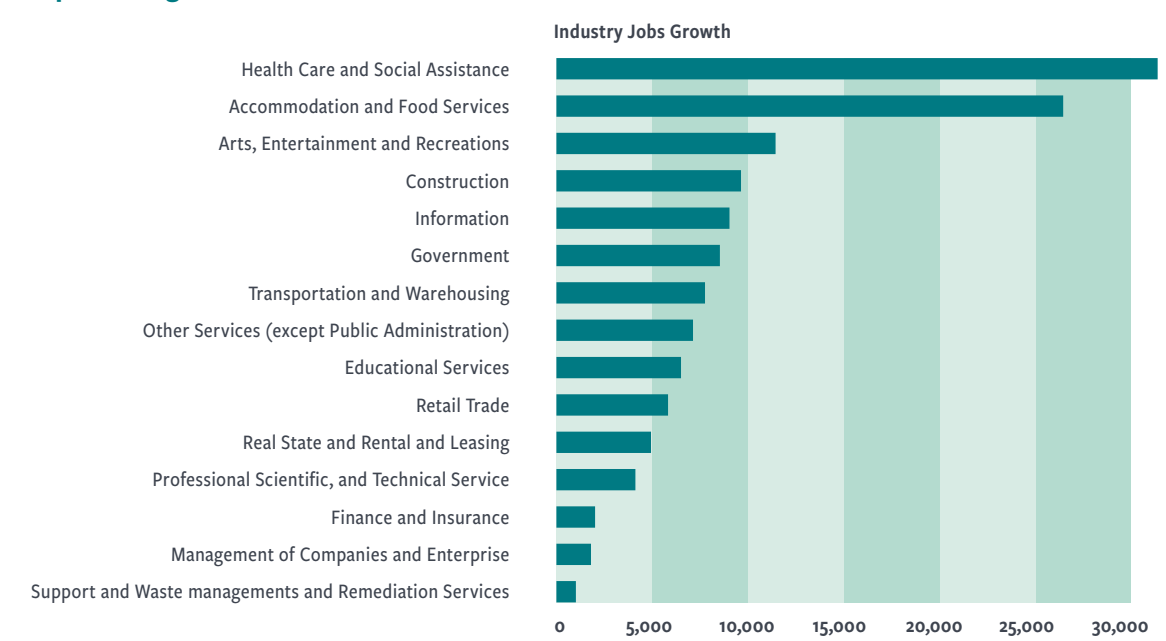
## 3RD DISTRICT • SHEILA KUEHL



	SD3
Total Population	2.03 million
% Hispanic Origin	39.30%
Income per Capita	\$38,896
Median Age	36.7
Employed Residents	1,026,090
Bachelor's or Higher	42.40%
Household income	see chart
Total Households	766,230
Residents below Poverty Line	15.50%
Median HH income	\$63,637
Total Jobs	899,690
Jobs held by residents of SD	38.70%
Jobs-Population Ratio	0.44

To view district map visit:  
[http://file.lacounty.gov/SDSInter-lac/1031540\\_3rdDistrictMap.pdf](http://file.lacounty.gov/SDSInter-lac/1031540_3rdDistrictMap.pdf)

### Top Growing Industries



## 4TH DISTRICT • JANICE HAHN

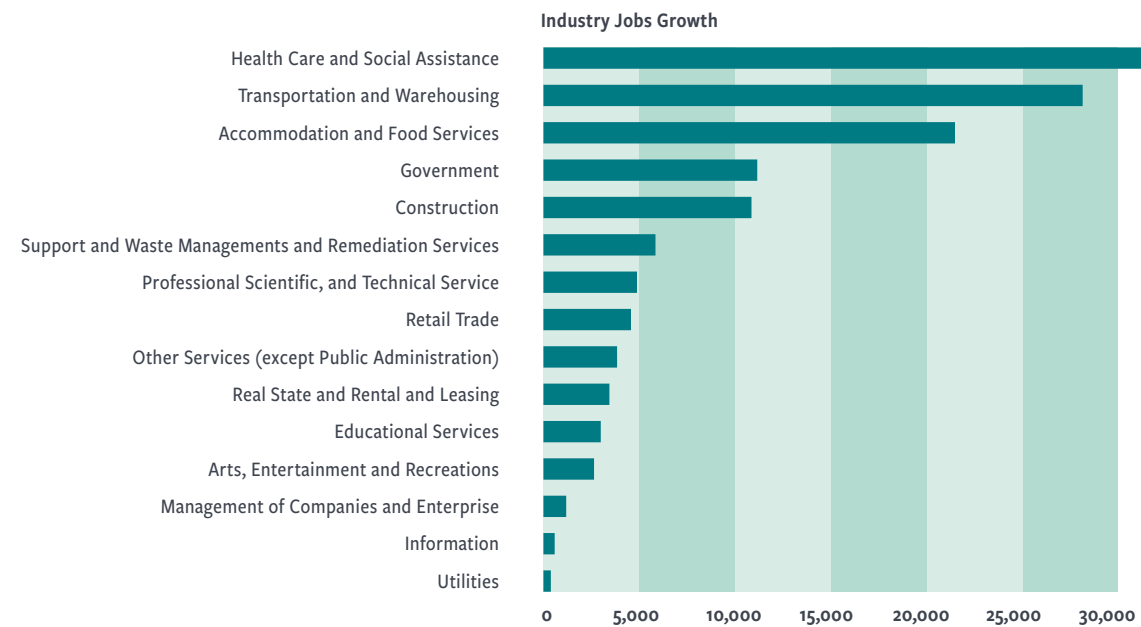


	SD4
Total Population	2.03 million
% Hispanic Origin	44.70%
Income per Capita	\$31,811
Median Age	36.7
Employed Residents	947,260
Bachelor's or Higher	33.40%
Household income	see chart
Total Households	676,460
Residents below Poverty Line	12.50%
Median HH income	\$66,543
Total Jobs	935,970
Jobs held by residents of SD	36.20%
Jobs-Population Ratio	0.38

To view district map visit:

[http://file.lacounty.gov/SDSInter-lac/1031543\\_4thDistrictzipcodes.pdf](http://file.lacounty.gov/SDSInter-lac/1031543_4thDistrictzipcodes.pdf)

### Top Growing Industries



## 5TH DISTRICT • KATHRYN BARGER

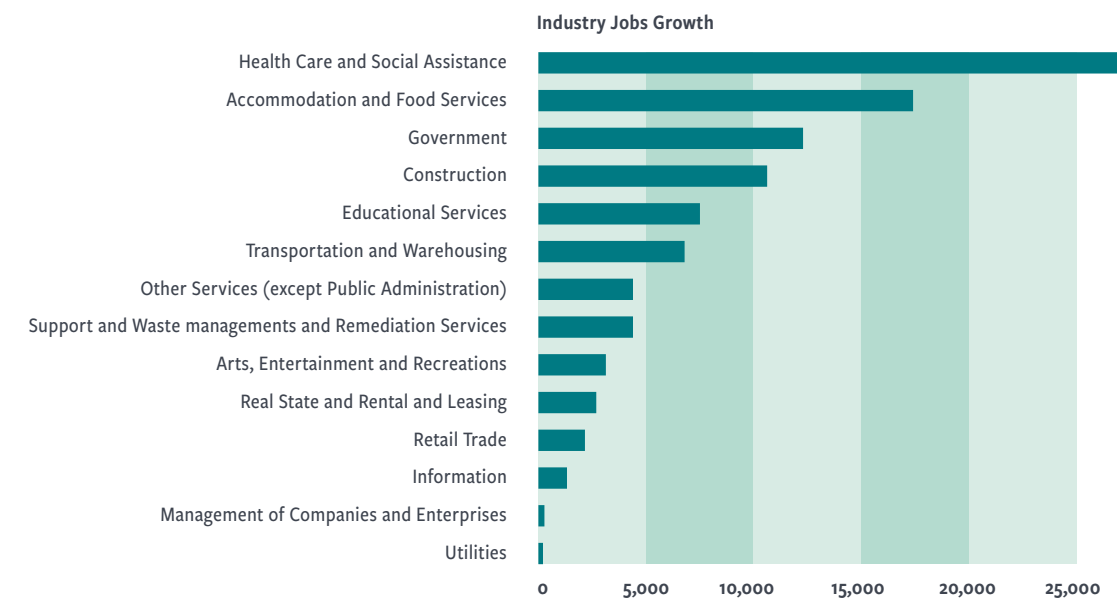


	SD5
Total Population	2.02 million
% Hispanic Origin	32.50%
Income per Capita	\$33,624
Median Age	38.7
Employed Residents	928,960
Bachelor's or Higher	36%
Household income	see chart
Total Households	684,470
Residents below Poverty Line	12.30%
Median HH income	\$71,440
Total Jobs	718,610
Jobs held by residents of SD	37.80%
Jobs-Population Ratio	0.36

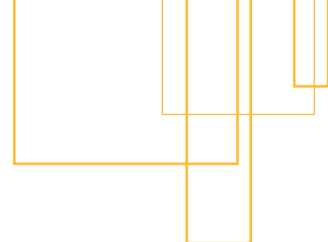
To view district map visit:

[http://file.lacounty.gov/SDSInter-lac/1031544\\_5thDistrictMap.pdf](http://file.lacounty.gov/SDSInter-lac/1031544_5thDistrictMap.pdf)

### Top Growing Industries







## BUSINESS ADVISORY SERVICES

As you may know, starting and managing a business is difficult. The County is here to help. We provide the following consulting services to businesses in the form of seminars, one-on-one counseling, procurement assistance and more. It is the County's goal that all these services are accessible for businesses.

# General Business Consultation

## BUSINESS NEEDS ASSESSMENT WORKFORCE DEVELOPMENT, AGING AND COMMUNITY SERVICES (WDACS)

Find out if your business has areas for growth by working with a staff member located at one of the County's America's Job Centers of California (AJCCs) who can conduct a comprehensive Business Needs Assessment. After the assessment is completed, the AJCC staff can guide you through next steps to receive services that your business may need.



[bizdev@wdacs.lacounty.gov](mailto:bizdev@wdacs.lacounty.gov)



[workforce.lacounty.gov/Business-Services/](https://workforce.lacounty.gov/Business-Services/)

## SMALL BUSINESS CONCIERGE DEPARTMENT OF CONSUMER AND BUSINESS AFFAIRS (DCBA)

As an aspiring entrepreneur, starting a business can seem overwhelming. The Small Business Concierge can make starting a business a breeze. At no cost to you the Small Business Concierge can be your single point of contact and help you navigate the complex process of opening a business.

The Concierge also hosts Small Business Workshops and can connect you with resources to help you launch your business.



(323) 881-3964



[concierge@dcba.lacounty.gov](mailto:concierge@dcba.lacounty.gov)



<https://dcba.lacounty.gov/concierge/>



## STRATEGIC PLANNING & HR CONSULTATION WORKFORCE DEVELOPMENT AGING AND COMMUNITY SERVICES (WDACS)

Are you looking to invest in your staff? Our AJCC staff can engage your business in strategic planning focused on workforce investment, business growth, and economic development. These activities include but are not limited to: sponsoring employer forums, securing information on industry trends, providing corporate economic development planning information, partnering to identify workforce challenges, and developing ways to address these challenges.

AJCC staff can also provide you with Human Resource (HR) related services.

**Services include:** Pre-employment testing, background checks, assistance in completing the I-9 paperwork, providing employers with job and task analysis services, absenteeism analysis .



(213) 810-1641



[bizdev@wdacs.lacounty.gov](mailto:bizdev@wdacs.lacounty.gov)



[Workforce.lacounty.gov/Business-Services/](https://workforce.lacounty.gov/Business-Services/)



(213) 810-1641



[bizdev@wdacs.lacounty.gov](mailto:bizdev@wdacs.lacounty.gov)



[Workforce.lacounty.gov/Business-Services/](http://Workforce.lacounty.gov/Business-Services/)

### LABOR MARKET INFORMATION WORKFORCE DEVELOPMENT, AGING AND COMMUNITY SERVICES (WDACS)

**Did you know that California has a 4.3% unemployment rate?**

To find out specific information about national, state, or your local business area labor market information, connect with your local AJCC staff by emailing [bizdev@wdacs.lacounty.gov](mailto:bizdev@wdacs.lacounty.gov). Staff can also help you utilize the labor market information to create a business plan for expansion, relocation, or determine future hiring and training needs or refer you to a labor market information consultant who can prepare detailed occupational labor market information. Available data includes: Economy Overview Reports, Regional Comparison Reports, Population Demographics Reports, Regional Comparisons by Industry, Regional Comparisons by Occupation, Industry Snapshot Reports, Compare Industries Reports, Industry Diversity Snapshots, and Competitive Wage Reports.



### BUSINESS INCUBATION AT BUSINESS TECHNOLOGY CENTER LA COUNTY DEVELOPMENT AUTHORITY (LACDA)

To gain access to mentoring, coaching, counseling, loan programs, and business services contact the Business Technology Center (BTC) which offers a collaborative support team for a community of budding entrepreneurs. The BTC can connect tenant businesses to venture capital and investment groups, and provides workshops, educational courses, and networking events.

Guests arriving at the BTC are greeted by a receptionist that acts as the extension of the tenant companies and manages the spacious conference rooms and mail room. The BTC offers secured 24/7 facility access, with various sized offices and suites at below market rate and flexible space increases as your business expands.



(626) 296-6300



<https://www.lacdc.org/economicdevelopment/business-incubation>

### BUSINESS COUNSELING SERVICES DEPARTMENT OF REGIONAL PLANNING (DRP)

Before you decide where you want to start or expand your business, make sure to check with the Department of Regional Planning (DRP) for counseling services. They can help ensure your business is in compliance with land-use policies and zoning ordinances. Businesses must be allowed in the desired location according to the zoning code and some businesses (such as massage parlors, stores and restaurants that sell alcoholic beverages, and the co-location of multiple business types) are subject to more restrictive rules.



(213) 974-6411



[ldcc@planning.lacounty.gov](mailto:ldcc@planning.lacounty.gov)



<http://planning.lacounty.gov/luz>



**CONSULTATIVE SERVICES**  
DEPARTMENT OF PUBLIC HEALTH ENVIRONMENTAL  
HEALTH DIVISION (DPH EHD)

If you need assistance in finding compliance solutions for your retail food operation, contact the EHD Consultative Services Program. They can inform you and your employees about the environmental health policies, procedures, and regulations through presentations, web posting, fact sheets, FAQs, and other educational materials and outreach activities.

The Consultative Services Program can help you gain greater understanding of local health department compliance policies and related State and Federal codes.



(626) 430-5320



<http://www.publichealth.lacounty.gov/eh/EPS/workforceAdvisory/consult.htm>

# Procurement Consultation

Have you ever considered doing business with the County? If you are selling, the County is buying. LA County is actively seeking to contract businesses for various goods and services at a competitive price through a bidding process (also known as the procurement process). Find out below about how to register to be a County vendor and its benefits.

**VENDOR REGISTRATION**  
INTERNAL SERVICES DEPARTMENT (ISD)

The first step in doing business with the LA County is to register your business in the County's vendor registration system. Registration provides the County with information on your business including the products and services you offer.

Upon completion of the registration process, your business will be included in the County's vendor database which is viewed by all County Procurement Officers and may be used by all County departments to solicit bids. Your business will automatically be notified via e-mail of solicitations for products and services for which it is registered.



(323) 267-2725



<https://camisvr.co.la.ca.us/webven/>





(323) 881-3964



SBS@dca.lacounty.gov



<https://lacountyptac.ecenterdirect.com/events?reset=1>



(323) 881-3964



SBS@dca.lacounty.gov



<http://dca.lacounty.gov/small-business-calendar/>

### TRAINING WORKSHOPS OFFICE OF SMALL BUSINESS (OSB) • DEPARTMENT OF CONSUMER AND BUSINESS AFFAIRS (DCBA)

Attend one of the Office of Small Business' regularly hosted training workshops designed for established and new businesses, as well as aspiring entrepreneurs, to gain valuable information about how to grow your business.

Workshop topics include: getting on the GSA schedule, marketing your business to the government and how to open your business.



### SMALL BUSINESS EVENTS OFFICE OF SMALL BUSINESS (OSB) • DEPARTMENT OF CONSUMER AND BUSINESS AFFAIRS (DCBA)

Participate in the Contracting Connections networking events hosted by the Office of Small Business every year, in each of the Supervisorial Districts, to meet and network with purchasing and contracting staff from federal, state, county, and local government.

You can view and register for small business events hosted by DCBA and partner agencies through their website.



### PUBLIC INFORMATION AND EDUCATION OFFICE OF EMERGENCY MANAGEMENT (OEM)

Prepare your business to survive an emergency situation by working closely with the Office of Emergency Management. They conduct public education trainings for all hazards through the Emergency Survival Program (ESP), expos, and various media presentations throughout the County.



<https://ceo.lacounty.gov/emergency-management/>



(323)881-3964



SBS@dcba.lacounty.gov



http://dcba.lacounty.gov/ptac/

**PROCUREMENT TECHNICAL ASSISTANCE CENTER  
OFFICE OF SMALL BUSINESS (OSB) • DEPARTMENT  
OF CONSUMER AND BUSINESS AFFAIRS (DCBA)**

To expand your contracting opportunities with local, state, and federal government, contact the Procurement Technical Assistance Center (PTAC). They can provide you the information, support and one-on-one counseling, which includes: registering in a variety of databases, reviewing capability statements, writing proposals, and conducting market research. The LA County PTAC also provides training, workshops, and additional resources. All services are available at no cost. Client registration is required.



**SMALL BUSINESS UTILIZATION PLAN  
& PREFERENCE PROGRAMS & CERTIFICATION  
OFFICE OF SMALL BUSINESS (OSB) • DEPARTMENT  
OF CONSUMER AND BUSINESS AFFAIRS (DCBA)**

In July 2016 by the Board of Supervisors passed a four-year plan which mandates the increased utilization of Local Small Businesses (LSBE) and Disabled Veteran Businesses (DVBE) Countywide by 25% and 3% respectively. This unprecedented mandate to contract with small businesses makes it even easier for small businesses to receive contracts from LA County.

**Preference Programs:**

**LOCAL SMALL BUSINESS ENTERPRISE (LSBE):** The LSBE Preference Program boosts contracting opportunities for small businesses in LA County. Certified LSBEs receive up to a 15% price preference and 15-day prompt pay which helps make certified small businesses more competitive when bidding on L.A. County solicitations.

**DISABLED VETERAN BUSINESS ENTERPRISE (DVBE):** The DVBE Preference Program is designed to enhance purchasing and contracting opportunities for businesses owned by disabled veterans by providing up to a 15% price preference when competing on LA County solicitations.

**SOCIAL ENTERPRISE (SE):** The SE Preference Program was designed to increase contracting opportunities for enterprises that have a social mission to enhance the County in terms of its economic and environmental sustainability, including the financial well-being of residents who are vulnerable and face barriers to gainful employment and housing. Certified SEs receive up to a 15% price preference when competing on LA County solicitations and can apply to be included in a first of its kind Social Enterprise agreement

**Other Certification Programs:**

**COMMUNITY BUSINESS ENTERPRISE (CBE):** The CBE Program encourages business owners who are minorities, women, disabled veterans, or disadvantaged to capitalize on opportunities in government and private-sector procurement programs.



[https://iddweb.isd.lacounty.gov/DCA\\_eComplaint/SmallBusinessCertifications](https://iddweb.isd.lacounty.gov/DCA_eComplaint/SmallBusinessCertifications)





(213) 974-8428



[PRMTProgram@auditor.lacounty.gov](mailto:PRMTProgram@auditor.lacounty.gov)



[auditor.lacounty.gov](http://auditor.lacounty.gov)

### LOCAL SMALL BUSINESS PAYMENT LIAISON AUDITOR CONTROLLER

If you are an LA County certified Local Small Business Enterprise make sure to connect with your Prompt Pay Liaison so they can help you participate in the Prompt Payment Program (PPP) and address payment delay(s) or issues. Prompt pay is defined as payment within 15 calendar days after receipt by a County department of an undisputed invoice that has been properly matched against a receiving or shipping document, service deliverable, payment schedule or any other validation of receipt document. The PPP Liaison is also responsible for coordinating actions and/or resolutions between the LSBEs and the respective County department(s).

## Informational Seminars & Workshops

### BUSINESS SEMINARS WORKFORCE DEVELOPMENT, AGING AND COMMUNITY SERVICES (WDACS)

Managing your business is already hard work. Researching information on ways to stay compliant on various employment laws can be time-consuming. The AJCC staff can provide or facilitate a variety of informational seminars for your businesses and staff on topics including:

- Disability Insurance
- Unemployment Insurance
- Employment Law: Health & Safety, Wages, Work Hours, Work Permits, Workers Comp, Fair Chance Act
- Employment Taxes
- Americans with Disabilities Act (ADA)
- Career Pathway Programs: job shadowing, work experience sites, mentoring, speaking engagements, and employer focus groups.

Contact your local AJCC staff today to schedule your next informational seminar.



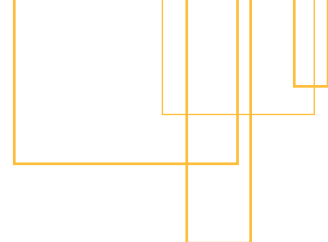
(213) 810-1641



[bizdev@wdacs.lacounty.gov](mailto:bizdev@wdacs.lacounty.gov)



[Workforce.lacounty.gov/Business-Services/](http://Workforce.lacounty.gov/Business-Services/)



## PERMITS & REGULATIONS

Depending on the location of your business within LA County, you may be subject to permitting, zoning, licensing, or other regulations from the County or a city. AJCC staff can help you determine which agencies you may need to consult when opening or expanding your business. This section contains information on permits from Department of Regional Planning (DRP), Department of Public Works (DPW) and the Environmental Health Division (EHD) of the Department of Public Health (DPH); Agricultural, Weights, and Measures Oversight; Minimum Wage requirements; Business License information; and other industry-specific regulations for the unincorporated areas of LA County.

To identify your appropriate county or city agencies, please refer to: <http://www.calgold.ca.gov/> and <https://www.lavote.net/apps/precinctsmaps>.



# Permits, Licenses & Registrations

## BUSINESS LICENSE COUNTY TREASURER & TAX COLLECTOR (TTC)

Find out if you need a business license by connecting with the County's Treasurer Tax Collector. Note, pursuant to the County Code, certain businesses, located in the unincorporated areas of the County or in the cities of Malibu, Santa Clarita, or Westlake Village, that conduct a business activity that may have an impact on the health, welfare or safety of the public must hold a County business license to conduct that activity. Some businesses may require more than one County business license.

All County business license applications require the applicant to pay a non-refundable application fee. Some business licenses are granted upon payment of the fee, while others may require the approval of other County agencies (the Fire Department, Sheriff's Department, Department of Health Services, and/or Department of Regional Planning) or a hearing before the Business License Commission.



(213) 974-2011



[businesslicense@ttc.lacounty.gov](mailto:businesslicense@ttc.lacounty.gov)



<https://ttc.lacounty.gov/business-license-general-information/>



Visit the Treasurer and Tax Collector's website at [TTC.lacounty.gov](http://TTC.lacounty.gov) to obtain more information, to look up the jurisdiction of your business, and to apply for a business license online or review the Treasurer Tax Collectors FAQs.



(213) 974-6411



[Zoningldcc@planning.lacounty.gov](mailto:Zoningldcc@planning.lacounty.gov)



[http://planning.lacounty.gov/faq/license\\_referrals](http://planning.lacounty.gov/faq/license_referrals)

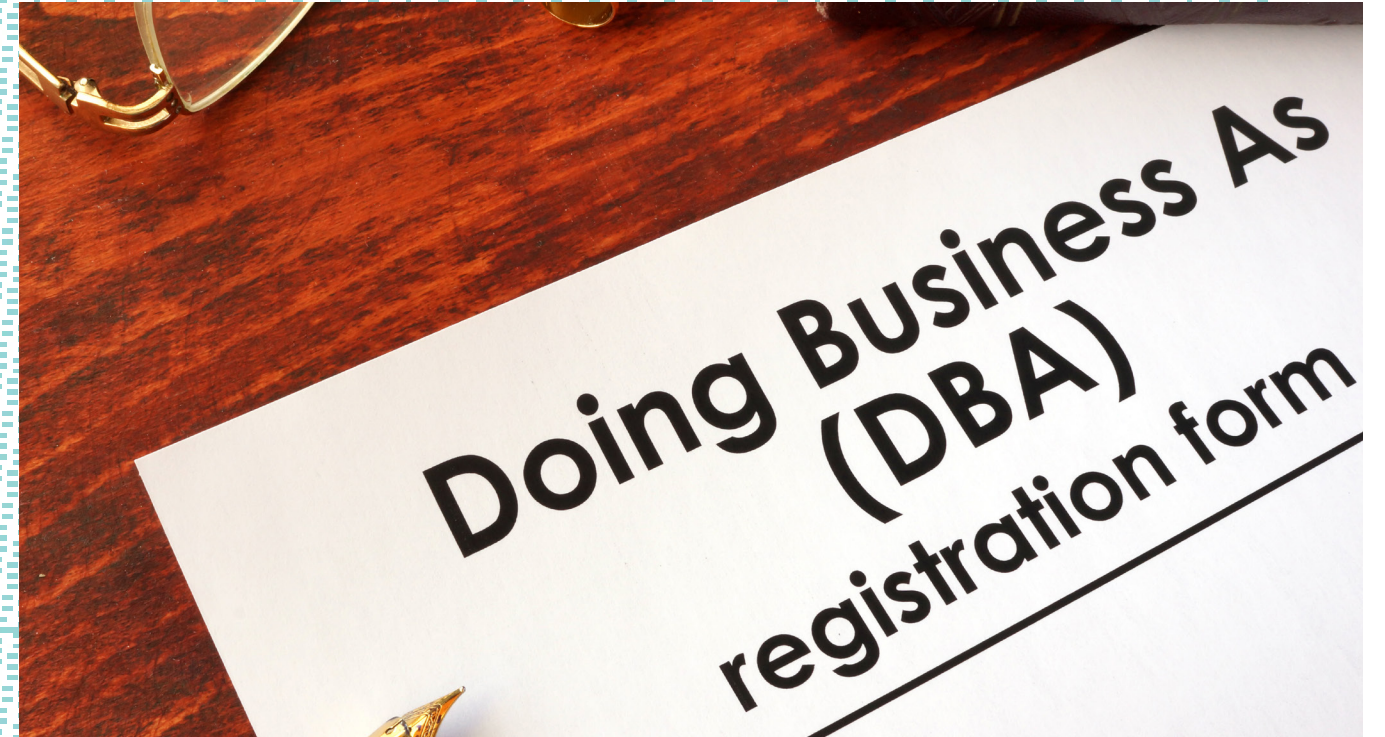
## BUSINESS LICENSES REFERRALS DEPARTMENT OF REGIONAL PLANNING (DRP)

If you are a new business, have a change of ownership, or change location; the County Treasurer and Tax Collector (TTC) will refer your business license application to DRP to verify that the business is allowed to operate in a location before TTC issues the business license.

In these cases, you should visit a nearby office location (<http://planning.lacounty.gov/locations>)

DRP may require a Site Plan Review permit if there is no prior record of approval or establishment of your business or if your business is making changes, such as adding new signs or parking spaces.





(213) 974-7691



<http://blc.lacounty.gov/>

### BUSINESS LICENSE HEARINGS BUSINESS LICENSE COMMISSION

Your business license may also require a hearing in front of the Commission, by the Board of Supervisors or another County department. Business licenses requiring Commission action include, but are not limited to: taxicab franchises, taxicab licenses, adult entertainment licenses, dance licenses, bookstores, billiard rooms, medical marijuana dispensaries, restaurants, salvage dealers, recycling centers, bingo operators, exhibitions, carnivals, circuses, health spas, massage parlors/technician, pictures arcades, rifle ranges, and private schools.

### FICTITIOUS BUSINESS NAME STATEMENTS-REGISTRAR-RECORDER/ COUNTY CLERK

So, you're starting a new business and decided on a business name. What's next? You will need to determine if you need to file for a fictitious business name. You may need to file a fictitious business name if you are doing business for profit under a fictitious name (does not include surname in company name). Statement must be filed in county of principal place of business and may also be filed in other counties as long as the requirements for filing in the county of principal place of business have been met. Non-profit corporations, organizations or associations are not required to file a Fictitious Business Name Statement



(800) 201-8999



<https://www.lavote.net/home/county-clerk/fictitious-business-names/general-info>



**CERTIFICATION SERVICES: PLANTS, PERISHABLES, ORGANICS, PHYTOSANITATION AGRICULTURAL COMMISSIONER/WEIGHTS AND MEASURES (ACWM)**

Before selling your goods at the local Farmers’ Market, contact the ACWM to get certified. The ACWM must verify your commercial farm, ranch, or nursery’s produce and certify you as a producer, which, among other things, allows you to sell at Certified Farmers’ Markets. This includes if your business has a small number of trees and plants and if you want to sell what you grow. ACWM also provides “organic” registration and regulation. They can also issue your business a phytosanitary certification to indicate that your exporting shipment is free of certain insect, weed, and plant disease pests.



(562)622-0426



<https://acwm.lacounty.gov/pest-control-operators/>



(626) 575-5466



<https://acwm.lacounty.gov/pest-control-operators/>

**PESTICIDE SAFETY TRAINING & REGISTRATION AGRICULTURAL COMMISSIONER/WEIGHTS AND MEASURES (ACWM)**

If your business advertises, solicits, or operates as a pest control business in the LA County, make sure you are registered with ACWM. You must also be licensed and registered if your businesses performs pest control work incidental to your work, such as a Maintenance Gardener.

ACWM can also provide pesticide safety training to your agricultural and horticultural workers and Pest Control Operators. They can investigate potential misuse or misrepresentation of pesticides at the request of your businesses, whether your business is agricultural or not (office buildings, swimming pools with chlorine problems, etc.).

**Need consultation services to determine what permits you need?**

**REFERENCE THE FOLLOWING SERVICES**

Business Counseling Services on page 15

Consultative Services on page 16





(213) 974-6411



ldcc@planning.lacounty.gov



TO GET A PERMIT  
<https://epicla.lacounty.gov/SelfService/>

TO FIND AN OFFICE NEAR YOU  
<http://planning.lacounty.gov/locations>



626-458-3517



<http://dpw.lacounty.gov/epd/ust/>

## PERMITS DEPARTMENT OF REGIONAL PLANNING (DRP)

To ensure your business is meeting zoning code requirements, such as rules for signs, parking spaces, landscaping and outside storage, contact the Department of Regional Planning. Some permits may be required to undergo a public hearing before a Hearing Officer or the Regional Planning Commission to allow for neighbors to provide comments.

The most popular permits include: Zoning Conformance Reviews, Site Plan Reviews, and Conditional Use Permits.

Detailed information, including permit application forms, can be found at <http://planning.lacounty.gov/apps>. The online permitting system, EP-IC-LA, can be found accessed at <https://epicla.lacounty.gov/SelfService/>.

## UNDERGROUND STORAGE TANK (UST) PROGRAM-DPW

If your business utilizes an underground storage tank or is on a property that has an underground storage tank, check in with the LA County Department of Public Works, Environmental Programs Division (DPW EPD) to make sure it is properly permitted. Their Underground Storage Tank (UST) Program permits and inspects underground storage tanks within the unincorporated areas of Los Angeles County and 77 cities.

Los Angeles County Code (LACC), Title 11, Division 4, established the underground storage tank program in Los Angeles County in 1983. The Los Angeles County Underground Storage Tank Program's goal is to protect the public, the environment (air, soil and groundwater) and UST owners/operators by ensuring that UST facilities are permitted, designed/installed/modified, operating and eventually closed in compliance with local/state/federal requirements.





**RECREATIONAL WATERS PROGRAM**  
**ENVIRONMENTAL HEALTH DIVISION (EHD) OF**  
**THE DEPARTMENT OF PUBLIC HEALTH (DPH)**

Are you planning on adding or remodeling a public pool, or do you have questions about your pool? Don't forget to contact the EHD Recreational Waters Program which is responsible for the enforcement of laws and regulations relating to public pools in Los Angeles County. This includes swimming pools, spas, wading pools and special purpose pools located at hotels and motels, public and private schools, health clubs, city and county parks, mobile home parks, resorts and organizations, medical facilities, and water theme parks. The program is responsible for the plan approvals of all new public pools and renovations of existing pools. The program also certifies individuals as Swimming Pool Service Technicians. All individuals engaged in the business of maintaining pools are required to be certified by Los Angeles County.

Common permits include: Public Swimming Pool, Public Swimming Pool Additional, Swimming Pool Technician



(636)-430-5360



[http://publichealth.lacounty.gov/eh/EP/rw/rw\\_main.htm](http://publichealth.lacounty.gov/eh/EP/rw/rw_main.htm)



(888) 700-9995



<http://publichealth.lacounty.gov/eh/food>

**FOOD SERVICES**  
**ENVIRONMENTAL HEALTH DIVISION (EHD) OF**  
**THE DEPARTMENT OF PUBLIC HEALTH (DPH)**

Before selling your delectable delights, contact DPH EHD which offers many services related to food, including issuing restaurant and food retail permits and licenses, enforcing food and safety regulations, and conducting routine inspections and investigations. The EHD District Surveillance and Enforcement (DSE) is responsible for ensuring that the food provided for human consumption is safe, wholesome, and free of contamination. DSE is responsible for the inspection of more than 26,000 restaurants, 12,000 markets, and 1,200 food warehouses.

Common permits include: Food Market Retail (1-1999 SQ FT) Low Risk, Food Market Retail (2,000+ SF) Low Risk, Restaurant (0-30 seats) Low/Moderate/High Risk, Restaurant (31-60 seats) High Risk, Restaurant (61-150 seats) High Risk, Restaurant (151+ seats) High Risk, Mobile Food Facility-Truck High Risk, Soft Serve Machine





(626) 430-5570



[http://www.publichealth.lacounty.gov/eh/SSE/garments/garments\\_wa-ver\\_letter.htm](http://www.publichealth.lacounty.gov/eh/SSE/garments/garments_wa-ver_letter.htm)

**GARMENTS PROGRAM**  
ENVIRONMENTAL HEALTH DIVISION (EHD) OF THE  
DEPARTMENT OF PUBLIC HEALTH (DPH)

If your business needs to set up a garment facility, you should be aware of the Department of Public Health's Garment Program. The EHD Garment Inspection Program is responsible for enforcing general sanitation and occupational health and safety requirements within garment manufacturing establishments, garment manufacturing complexes, commercial laundries, and wiping cloth establishments. This program conducts inspections and enforces compliance with general sanitation codes.

Common permits include: Garment Manufacturer (1,001-4,999 sq ft)

**SOLID WASTE MANAGEMENT PROGRAM**  
ENVIRONMENTAL HEALTH DIVISION (EHD) OF  
THE DEPARTMENT OF PUBLIC HEALTH (DPH)

The Solid Waste Management Program (SWMP) enforces the California Code of Regulations at solid waste facilities, such as, active and closed landfills, solid waste transfer stations, and composting facilities. To protect and promote the public health and safety of the residents of LA County and the environment, The SWMP program conducts periodic inspections ensuring compliance by evaluating the amount and types of waste received, design and operation of the facilities, and that proper control measures are in place.



(626) 430-5540



[http://publichealth.lacounty.gov/eh/EP/solid\\_waste/solid\\_waste\\_main.htm](http://publichealth.lacounty.gov/eh/EP/solid_waste/solid_waste_main.htm)

## BUILDING PERMITS & REGULATIONS DEPARTMENT OF PUBLIC WORKS (DPW)

Before remodeling your business, reach out to DPW. They will help ensure your building is safe. This may require that you to apply for demolition permits to remove old structures on the property. You may also need to apply for and receive building permits to construct new buildings or modify (tenant improvements) existing buildings. You may be required to prepare grading, building, electrical, mechanical, plumbing, and/or sewer plans and submit to Public Works for review and approval.

Plan Submittals, Permit Applications, and Inspection Requests are handled in the County's electronic permit and inspection system, EPIC-LA (<https://epicla.lacounty.gov/>)



(626) 458-3173



<https://dpw.lacounty.gov/idd/iddservices/iddservices.shtml>



## DRAINAGE PERMITS & REGULATIONS DEPARTMENT OF PUBLIC WORKS (DPW)

If you have a new construction and/or are altering the site topography, DPW works with you to ensure that the selected site will not flood during storms or negatively impact properties downstream from the project during storms. This may require you to prepare a hydrology study and submit it to DPW for review and approval. The outcome of the study may require you to construct a publicly maintained storm drain system. You will then need to prepare storm drain plans to handle the storm water and submit them to DPW for review and approval. Construction of the publicly maintained storm drain system will require flood control permits.

Plan Submittals, Permit Applications, and Inspection Requests are handled in the County's electronic permit and inspection system, EPIC-LAEP-IC-LA (<https://epicla.lacounty.gov/>)



(626) 458-5915



<https://dpw.lacounty.gov/idd/iddservices/iddservices.shtml>



### SEWER PERMITS & REGULATIONS DEPARTMENT OF PUBLIC WORKS (DPW)

If you have a new construction and/or are making changes to the use of existing buildings, DPW will work with you to ensure that the local sewer system can handle the additional sewage generated by the new business or residences. This may require you to prepare a sewer area study and submit it to DPW for review and approval. The outcome of the study may require you to construct publicly maintained sewer line upgrades. You will then need to prepare sewer improvement plans to upgrade segments of the existing sewer system and submit them to DPW for review and approval. Construction of the publicly maintained sewer upgrades will require road and sewer permits.

Plan Submittals, Permit Applications, and Inspection Requests are handled in the County's electronic permit and inspection system, EPIC-LAEP-IC-LA (<https://epicla.lacounty.gov/>)



(626) 458-5915



<https://dpw.lacounty.gov/idd/iddservices/sewerAreaStudy/sewerAreaStudy.shtml>

### TRAFFIC PERMITS & REGULATIONS DEPARTMENT OF PUBLIC WORKS (DPW)

If you have a new construction and/or are making changes to the use of existing buildings, DPW will work with you to ensure that the streets around your business can handle the additional traffic that is generated by your business. This may require you to prepare various types of traffic studies and submit them to DPW for review and approval. The outcome of these studies may require you to construct traffic signals, widen the street, and/or restripe the street. You will then need to prepare traffic signal plans, street widening plans, and/or street striping plans and submit them to DPW for review and approval. Construction of these traffic improvements will require road permits.

Plan Submittals, Permit Applications, and Inspection Requests are handled in the County's electronic permit and inspection system, EPIC-LAEP-IC-LA (<https://epicla.lacounty.gov/>)



(626) 458-5915



<https://dpw.lacounty.gov/idd/iddservices/iddServices.shtml>



## STREET PERMITS & REGULATIONS DEPARTMENT OF PUBLIC WORKS (DPW)

If you have a new construction and/or are making changes to the use of existing buildings, DPW will work with you to ensure a healthy, safe, and orderly site and adjacent public improvements. This may require you to prepare street improvement plans to:

- Locate/relocate driveways so customer vehicles can enter and leave the project site safely
- Install curb and gutter for proper drainage
- Install sidewalks to provide safe walking paths and a healthy alternative to driving
- Install street lights to provide a safe driving and walking experience
- Install trees to provide shade while walking on the sidewalk

This may require you to prepare street light plans, soil reports and geotechnical studies, street improvement plans, and water quality plans. Construction of the publicly maintained street improvements will require road permits.

Plan Submittals, Permit Applications, and Inspection Requests are handled in the County's electronic permit and inspection system, EPIC-LAEP-IC-LA (<https://epicla.lacounty.gov/>)



(626) 458-5915



<https://dpw.lacounty.gov/idd/iddservices/iddservices.shtml>



(626) 458-5915



<https://dpw.lacounty.gov/idd/iddservices/iddservices.shtml>

## ENVIRONMENTAL PERMITS & REGULATIONS DEPARTMENT OF PUBLIC WORKS (DPW)

If your business has any hazardous materials that it creates, stores, uses, and/or disposes of, DPW will work with you to ensure these activities are done so in a safe manner. In addition, DPW help you minimize waste generated by the business during construction. This may require you to:

- Apply for certain environmental permits
- Prepare a plan to ensure that demolition and construction materials will be reused and/or recycled and submit it to DPW for review and approval
- Prepare a business recycling plan and submit it to DPW for review and approval

## FACILITY LICENSING ANIMAL CARE CONTROL (ACC)

Are you in the business of working with animals? If so, reach out to the Department of Animal Care and Control to ensure you are in compliance with guiding regulations. The ACC is responsible for making sure that animals are cared for properly in their environments (pet shops, grooming parlors, etc).

The Animal Facility Licensing Division is responsible for inspecting dog and cat kennels, pet shops, grooming parlors, animal exhibition events, animal menageries, and mobile groomers. They also inspect facilities with guard dogs, circuses, and establishments that require a conditional use permit. When necessary, they issue orders to comply and/or citations to appear in court to enforce County and city ordinances.



(562) 345-0323



<http://animalcare.lacounty.gov/facility-licensing/>



# Regulations & Enforcement



## SECURED PROPERTY TAXES COUNTY TREASURER & TAX COLLECTOR (TTC)

Don't let your tax bill become overdue! The Treasurer and Tax Collector bills and collects secured property taxes, which are taxes on real property—vacant land and structures on land such as homes, businesses, office buildings, and apartments.

Contact TTC for several self-service options including looking up property tax amounts due, obtaining a copy of a property tax bill, reviewing payment history, or submitting an inquiry.



(213) 974-2111  
Toll-Free No.: (888) 807-2111



[info@ttc.lacounty.gov](mailto:info@ttc.lacounty.gov)



[TTC.lacounty.gov](http://TTC.lacounty.gov)

PERMITS & REGULATIONS



(213) 893-7935



[unsecured@ttc.lacounty.gov](mailto:unsecured@ttc.lacounty.gov)



[TTC.lacounty.gov](http://TTC.lacounty.gov)

## UNSECURED PROPERTY TAXES COUNTY TREASURER & TAX COLLECTOR (TTC)

Don't forget to pay taxes on your company car. Check in with the Treasurer and Tax Collector, who oversees the billing and Collection of Unsecured (Personal) Property Taxes, which are taxes on personal property, such as business fixtures, business personal property, boats and aircraft to make sure you don't owe any additional taxes.



## PRICING, WEIGHING, & MEASURING INSPECTION AGRICULTURAL COMMISSIONER/WEIGHTS AND MEASURES (ACWM)

Opening a grocery store? Make sure to weigh your merchandise accordingly. The ACWM can help you maintain commercial weighing and measuring devices and quantity claims. Whether you want to verify you are getting the amount of something for which you have paid or you want to ensure that you are providing exactly what your customers have ordered, the ACWM has the means to help you.

Check your meters! Inspectors perform undercover purchases at grocery and retail stores, gasoline stations, and recycling outlets to compare prices charged to advertised and shelf prices and to monitor appropriate use of scales and meters.

Businesses should register their scanners, meters, and scales with ACWM.



(562) 345-0323



<http://animalcare.lacounty.gov/facility-licensing/>

PERMITS & REGULATIONS



(800) 593-8222



wagehelp@dcba.lacounty.gov



<http://dcba.lacounty.gov/minimum-wage-for-businesses/>

### MINIMUM WAGE OVERSIGHT DEPARTMENT OF CONSUMER AND BUSINESS AFFAIRS (DCBA)

Did you know the minimum wage in the unincorporated areas of Los Angeles County will soon be \$15 an hour? Find out when your minimum wage will increase by contacting DCBA.

DCBA enforces the Minimum Wage Ordinance in Los Angeles County unincorporated areas and for the City of Santa Monica. They are responsible for conducting business compliance checks to ensure employers are paying the appropriate minimum wage to their employees.

As an employer, you should post this notice in a conspicuous place at any workplace or jobsite located within the unincorporated areas of the County where any employee works. View Workplace Posting by visiting: [http://file.lacounty.gov/SDSInter/dca/245570\\_FinalMinimumWageOrdinancePosterEnglishStandardSize8.5x14.pdf](http://file.lacounty.gov/SDSInter/dca/245570_FinalMinimumWageOrdinancePosterEnglishStandardSize8.5x14.pdf)

### ZONING ENFORCEMENT DEPARTMENT OF REGIONAL PLANNING (DRP)

If you have concerns that a property near your business does not conform to zoning ordinances or if your business receives a Notice of Violation, you can call the County's 211 Helpline or contact DRP.



(213) 974-6453



ZoningEnforcement@planning.lacounty.gov



[planning.lacounty.gov/enforcement](http://planning.lacounty.gov/enforcement)



### FUEL MODIFICATION UNIT FIRE DEPARTMENT

If you plan to build landscaping or create an irrigation plan for your business, the Fire Department's Fuel Modification Unit can help you obtain approval if your project is in a Fire Hazard Severity Zone. The process of approval consists of reviewing aspects such as structure location and type of construction, topography, slope, amount and arrangement of vegetation and overall site settings. Our objective through this approval plan process is to create defensible space necessary for effective fire protection of homes in the Fire Hazard Severity Zones.

Your business can also benefit from the Brush Clearance Inspection Program and Vegetation Management Program which are collaborative programs between the Fire Department and Agricultural Commissioner/Weights and Measures. These programs work on the total or partial removal of high fire hazard grasses, shrubs, or trees to protect property, life, and the environment. The Fire Department can declare a property with hazardous vegetation a public nuisance and enforce removal.



(626) 969-5205



<https://www.fire.lacounty.gov/forestry-division/forestry-fuel-modification/>



<https://www.fire.lacounty.gov/forestry-division/fire-hazard-reduction-programs/>

## BUSINESS PROPERTY STATEMENT & PROPERTY ASSESSMENT ASSESSOR

Business Personal Property-such as machinery, equipment, and office furniture-are taxable. California State Law mandates that any person whose aggregate cost of taxable personal property in the County, is at least \$100,000, must file a property statement (Form 571-L) with the Assessor, whether or not the Assessor requested such a filing. Filing is also required upon the request of the Assessor, regardless of the aggregate cost of taxable business property. The Business Property Statement is confidential and is not open for public inspection.

Business property tax bills entered on the unsecured roll as of July 31, 2019, are due on August 31, 2019. The Business Property Statement is subject to audit.

Some businesses may also E-File their statement at <https://efile.assessor.co.la.ca.us> The filer will need a six-digit PIN, which allows access to prior years' records. The PIN is found on the 571-L Business Property Statement sent to the business.

If assistance is needed, please contact Business Personal Property staff at the office location noted on your statement. Assessor Office locations: <https://assessor.lacounty.gov/office-locations/>



(323) 890-4045



<https://www.fire.lacounty.gov/hhmd-2/>

## HEALTH HAZARDOUS MATERIALS DIVISION (HHMD) FIRE DEPARTMENT

If your business handles a hazardous material and/or hazardous waste of quantities at any one time during a year equal to, or greater than a total volume of 55 gallons, a total weight of 500 pounds, or 200 cubic feet of a compressed gas, it is a hazardous materials handler and must report Owner/Operator, Business Activities, Inventory, Site Map, and Emergency Response and Contingency Plan and Employee Training Plan information in the California Environmental Reporting System (CERS). Hazardous Materials Business Plans are required to be submitted annually by March 1st.

LA County HHMD Site Mitigation Unit provides voluntary oversight of contamination clean-up. Oversight services are provided on a fee for service basis in all cities of the Los Angeles County except El Segundo, Glendale, Long Beach, Santa Fe Springs, and Vernon. For additional information, please contact Richard Clark, Supervising Hazardous Materials Specialist at (323) 890-4106.

## CALIFORNIA ACCIDENTAL RELEASE PREVENTION (CALARP) PROGRAM FIRE DEPARTMENT

The main objective of the CalARP program is to prevent accidental releases of those substances determined to potentially pose the greatest risk of immediate harm to the public and the environment, and to minimize the consequences if releases do occur. These regulated substances include both flammable and toxic hazardous materials listed on the Federal Regulated Substances for Accidental Release Prevention and on the State of California Regulated Substances lists. Businesses that handle regulated substances in industrial processes above threshold quantity levels are subject to CalARP program requirements.

Services include: inspection and enforcement, public review process, and risk management plans.



<https://www.fire.lacounty.gov/hhmd/cal-arp-program/>



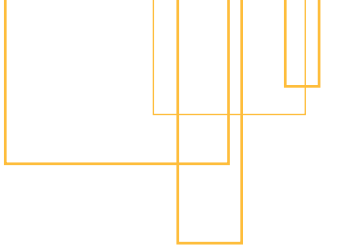
(323) 890-4045



<https://www.fire.lacounty.gov/hhmd/cers-information-2/>

## CALIFORNIA ENVIRONMENTAL REPORTING SYSTEM (CERS) FIRE DEPARTMENT

The California Environmental Reporting System (CERS) is the Statewide web-based system that supports the electronic exchange of required Unified Program information among businesses, local governments and the U.S. EPA. Assembly Bill 2286 (Feuer), effective January 1, 2009, requires all Unified Program regulated businesses and local regulating Unified Program Agencies (UPAs), to report and submit mandatory Unified Program information electronically, through CERS or a local UPA portal.



## ACCESS TO CAPITAL

Are you having a difficult time obtaining funding to start or grow your business? LA County can help! We can connect you to the capital you need to improve your business. This section contains information on some of the funding opportunities available to businesses in LA County.



**SMART FUNDING SMALL BUSINESS LOAN**  
**LOS ANGELES COUNTY DEVELOPMENT**  
**AUTHORITY (LACDA)**

Small business can work directly with the LACDA SMART Funding program to access capital with low-interest rates and flexible loan terms. The LACDA administers this loan program to assist the small business community by offering a loan product accessible to businesses not only located within the Los Angeles County region but also within a variety of business industries.



(626) 586-1856



<https://www.lacda.org/economicdevelopment/smart-funding>

**RENOVATE FAÇADE IMPROVEMENT PROGRAM**  
**LOS ANGELES COUNTY DEVELOPMENT**  
**AUTHORITY (LACDA)**

Give your business a façade makeover by contacting the LACDA RENO-VATE program. This program provides grants and technical services to property owners and businesses along designated commercial corridors in unincorporated areas of the LA County. RENO-VATE assists with the improvement of storefront façades. Improving the appearance of buildings and entire commercial centers creates a sense of place, revitalizes older commercial corridors, and makes businesses more inviting for shoppers. The program covers all costs associated with the façade improvement work, including environmental, design, and construction services.



(626) 586-1811



<https://www.lacda.org/economicdevelopment/renovate>



**TENANT IMPROVEMENT LOAN PROGRAM  
LOS ANGELES COUNTY DEVELOPMENT  
AUTHORITY (LACDA)**

If your business is in need of a renovation and is a tenant of the LA County Metropolitan Transportation Authority (Metro), then the Tenant Improvement Loan Program is here to help you. The LACDA and the Los Angeles County Metropolitan Transportation Authority (Metro) have partnered together to establish and administer a loan program that targets tenant improvements for ground floor retail/commercial spaces in Transit Oriented Communities (TOC). The purpose of the loan program is to attract businesses to TOCs.

The loan program provides capital for property owners to build-out customized interior alterations (i.e. tenant improvements) in commercial/retail spaces for their small business tenants. Loans will be provided to property owners at low interest rates and flexible loan terms.



(626) 430-5540



[http://publichealth.lacounty.gov/eh/EP/solid\\_waste/solid\\_waste\\_main.htm](http://publichealth.lacounty.gov/eh/EP/solid_waste/solid_waste_main.htm)



<http://www.dpw.lacounty.gov/epd/rmdz/>

**CAL RECYCLE  
LA COUNTY RECYCLING MARKET DEVELOPMENT  
ZONES DEPARTMENT OF PUBLIC WORKS (DPW)**

The Recycling Market Development Zone Loan Program can provide your business a low-interest loans to increase diversion of non-hazardous solid waste from California landfills and promote market demand for secondary and post-consumer materials. It is a low-interest loan program which can provide up to 75% of the cost of a project or \$2 million (whichever is less). The project must be located in a Recycling Market Development Zone. Los Angeles County has several Recycling Market Development Zones (RMDZs), which provide a varying array of services, including business and technical assistance, financing, incentives, and product marketing to businesses that use materials from the waste stream to manufacture products that are located in a qualifying zone. This program is administered by CalRecycle through the Department of Public Works.



(626) 296-6300

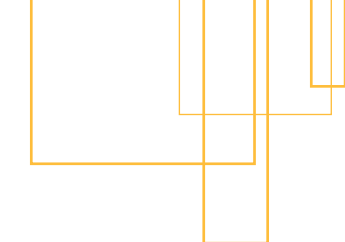


<https://www.lacda.org/economicdevelopment/business-incubation>

**BUSINESS INCUBATION AT  
BUSINESS TECHNOLOGY CENTER  
LOS ANGELES COUNTY DEVELOPMENT  
AUTHORITY (LACDA)**

To gain access to mentoring, coaching, counseling, loan programs, and business services contact the Business Technology Center (BTC) which offers a collaborative support team for a community of budding entrepreneurs. The BTC can connect tenant businesses to venture capital and investment groups, and provides workshops, educational courses, and networking events.

Guests arriving at the BTC are greeted by a receptionist that acts as the extension of the tenant companies and manages the spacious conference rooms and mail room. The BTC offers secured 24/7 facility access, with various sized offices and suites at below market rate and flexible space increases as your business expands.



## RECRUITING & HIRING

With a labor force of over 4.6 million people, it can be difficult to identify trained and skilled employees to fill your job openings. Through our system of America's Job Centers of California (AJCCs), as well as our network of partner organizations throughout LA County, we can connect your business to a pool of screened and qualified workers. Our AJCCs offer customized recruitment and hiring services, funds for training new (or existing) employees, and various financial incentives, such as tax credits, to reduce the costs associated with hiring and training new staff.

Contact your local AJCC for all of your workforce needs!

Find an AJCC near you  
(213) 810-1641  
[bizdev@lacounty.gov](mailto:bizdev@lacounty.gov)  
[workforce.lacounty.gov/Business-Services/](http://workforce.lacounty.gov/Business-Services/)





# Workforce Planning

Work with your local AJCC to develop a strategic plan for your business by creating a workforce investment strategy, utilizing advanced labor market information, identifying workforce challenges, and developing ways to address these challenges.



(213) 810-1641



[bizdev@lacounty.gov](mailto:bizdev@lacounty.gov)



[workforce.lacounty.gov/Business-Services/](http://workforce.lacounty.gov/Business-Services/)



# Recruitment & Placement Services

Not only can the AJCC help your business find qualified employees, but our AJCC staff will provide personalized follow-up to ensure you are satisfied with the placement services at no cost to you.



(213) 810-1641



[bizdev@lacounty.gov](mailto:bizdev@lacounty.gov)



[workforce.lacounty.gov/Business-Services/](http://workforce.lacounty.gov/Business-Services/)



## RECRUITMENT ACTIVITIES WORKFORCE DEVELOPMENT, AGING AND COMMUNITY SERVICES (WDACS)

AJCC staff can provide you with customized screening and referral of qualified job seekers to meet your workforce investment needs. This can include:

- Conducting a resumé search to find job seekers' resúmes that match an employer's job requirements and providing those resúmes to the employer
- Coordinating a focused recruitment campaign for a new business venture or a facility needing a large number of specialized workers
- Pre-screening candidates via pre-employment testing or background checks
- Distributing job postings to the AJCC network to reach more potential candidates
- Coordinating a job fair for open positions
- Assisting with new hire paperwork
- Providing access to untapped labor pools, such as youth and veterans
- Providing employers with job and task analysis services, absenteeism analysis
- Facilitating job shadowing for interested candidates

# Tax Credits and Incentives

Get money back for your business by applying for tax credits and incentives. AJCC staff can provide you with information on available tax credits and incentives to reduce the cost of hiring new talent. AJCC staff can also help you apply for and meet the requirements of these programs. These incentives include:

- WOTC: promotes the hiring of individuals who qualify as members of target groups, such as veterans, by providing a federal tax credit incentive of up to \$9,600 for employers who hire them. (Target Group Definitions Guide Card)
- Disabled Access Credit: Helps small businesses cover the cost of making their businesses accessible to persons with disabilities. The maximum amount of the credit is \$5,000.
- Architectural and Transportation Tax Deduction: Businesses may take an annual deduction of up to \$15,000 for expenses incurred to remove architectural and transportation barriers to persons with disabilities and the elderly.
- EDD Fidelity Bonding: a no-cost, no deductible bond to protect businesses against possible theft and dishonest or fraudulent acts from non-commercially bondable or at risk job applicants. The EDD's Fidelity Bonding Program provides bonding services in the amount of \$5,000, \$10,000 and \$15,000 at no cost to employers, employees, and job seekers at the Los Angeles County AJCCs.



(213) 810-1641



[bizdev@lacounty.gov](mailto:bizdev@lacounty.gov)



[workforce.lacounty.gov/Business-Services/](https://workforce.lacounty.gov/Business-Services/)



(213) 810-1641



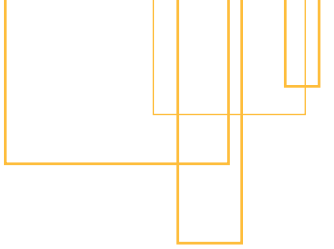
[bizdev@lacounty.gov](mailto:bizdev@lacounty.gov)



[workforce.lacounty.gov/Business-Services/](https://workforce.lacounty.gov/Business-Services/)

## CALJOBS WORKFORCE DEVELOPMENT, AGING AND COMMUNITY SERVICES (WDACS)

Your local AJCC can provide access to CalJOBS, California's online resource to help job seekers and employers navigate the state's workforce services. The enhanced system allows users to find qualified candidates for employment. AJCC staff can assist you with registering as an employer in CalJOBS, post job openings, browse résumés, keep their employee search organized, or expand their search to find good candidates for their companies. <https://www.caljobs.ca.gov/>



## WORKFORCE TRAINING

Save your business money and upskill your workforce by working with LA County's AJCCs. AJCC staff can provide your business with low or no-cost employee training programs to increase the specialization of your workforce and provide added value to your business.

These can include:

- Coordinating an On-the-Job Training program, in which the business is reimbursed for a percentage of a new employee's wage rate while the employer trains them
- Coordinating or designing an apprenticeship program
- Promoting an internship program
- Coordinating a paid or unpaid work experience program
- Providing publicly funded customized training assistance
- Connecting a business to an Employment Training Panel to up-skill current workforce
- Detailed information available <https://www.selacowdb.com/development/funded-employee-training/>
- Other training for new or current employees



(213) 810-1641

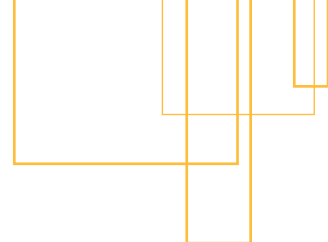


[bizdev@lacounty.gov](mailto:bizdev@lacounty.gov)



[workforce.lacounty.gov/Business-Services/](https://workforce.lacounty.gov/Business-Services/)





## LAYOFF AVERSION & MANAGEMENT

If your business is facing the possibility of layoffs or closure, the LA County AJCCs can provide Rapid Response services to help minimize the impacts on affected employees and work with your business to identify preventative measures.



(213) 810-1641



[bizdev@lacounty.gov](mailto:bizdev@lacounty.gov)



[workforce.lacounty.gov/Business-Services/](http://workforce.lacounty.gov/Business-Services/)

## RAPID RESPONSE TO LAYOFF OR CLOSURE WORKFORCE DEVELOPMENT, AGING AND COMMUNITY SERVICES (WDACS)

AJCC staff can provide rapid response activities in the case of a permanent closure or mass layoff at a plant, facility or enterprise, or a natural or other disaster that resulted in mass job dislocation in order to assist dislocated workers in obtaining reemployment as soon as possible.

### Rapid response activities include, but are not limited to:

- Establishing on-site contact with employers and employee representatives;
- Providing information and access to available employment and training activities;
- Providing an on-site presentation to employees on when to file for, how to file for, and who qualifies for Unemployment Insurance;
- Assisting in establishing a labor-management committee;
- Assessing the employment and training needs of dislocated workers, and assisting to obtain services to meet such needs;
- Providing emergency assistance adapted to the particular closure, layoff or disaster;
- assistance to the local community in developing a coordinated response and in obtaining access to state economic development assistance.

## LAYOFF AVERSION ACTIVITIES WORKFORCE DEVELOPMENT, AGING AND COMMUNITY SERVICES (WDACS)

Work with the AJCC staff to access layoff aversion services designed to prevent or minimize unemployment.

### These strategies include, but are not limited to, the following:

- Ongoing engagement and partnership-building activities with local businesses and community to avert lay-offs
- Assistance in reduction-in-force management
- Fund feasibility studies to determine if the company's operations might be sustained through a buyout or other means
- Develop and/or manage incumbent worker programs via connecting companies to state Short-Time Compensation or other programs to prevent layoffs
- Quickly re-employ dislocated workers
- Business loans for employee skill upgrading, along with other available government and local resources
- Establish linkages at the federal, state, and local levels, including the Department of Commerce, state and local resources available for business retention and expansion
- Partner or contract with business-focused organizations to assess risks to companies and how those risks can be ameliorated
- Analyses of affected company's suppliers to assess their risks and vulnerabilities
- Connect businesses and workers to short-term, on-the-job, or customized training programs, and/or apprenticeships before or after layoffs to facilitate rapid re-employment



(213) 810-1641



[bizdev@lacounty.gov](mailto:bizdev@lacounty.gov)



[workforce.lacounty.gov/Business-Services/](http://workforce.lacounty.gov/Business-Services/)

**SMALL BUSINESS  
DOWNSIZING/CLOSURE ASSISTANCE  
WORKFORCE DEVELOPMENT, AGING AND  
COMMUNITY SERVICES (WDACS)**

AJCC staff can provide services to a small business that is downsizing or expected to go out of business.

**Examples:**

- Onsite visits to provides employer with information on available AJCC services for affected employees and/or referrals to appropriate community resources

**Services include:**

- Reducing trauma and stress among workers facing layoffs
- Prevent future layoffs or lessen their impacts
- Offer access to unemployment insurance for your employees



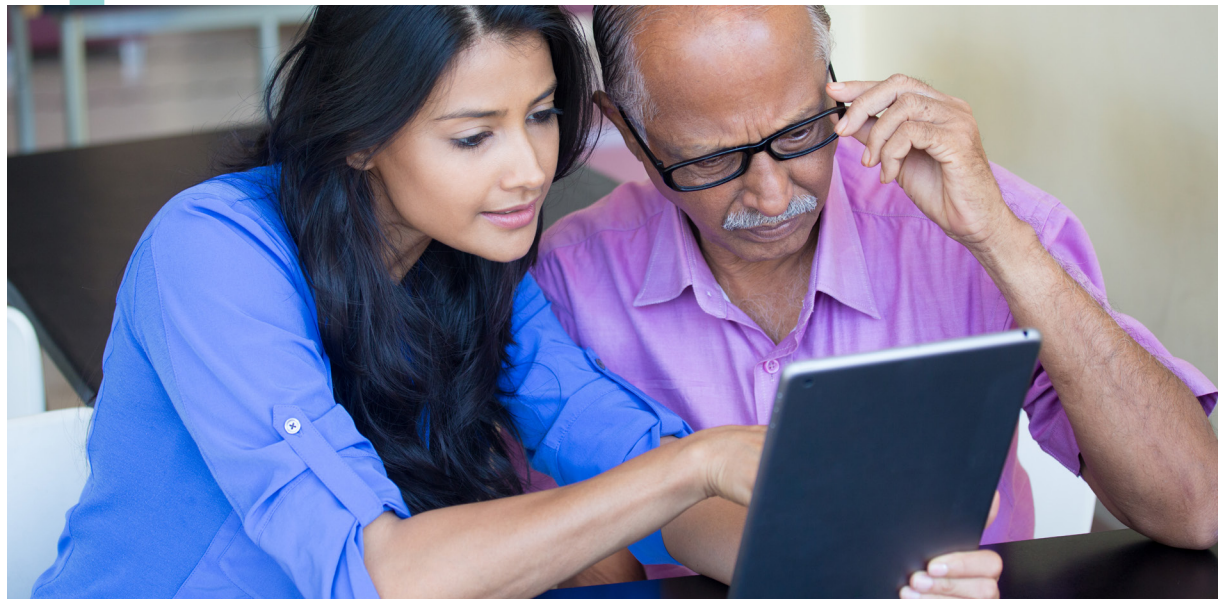
(213) 810-1641

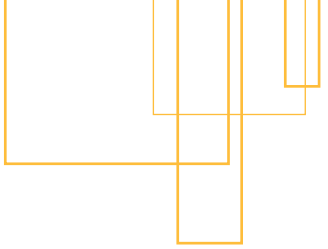


[bizdev@lacounty.gov](mailto:bizdev@lacounty.gov)



[workforce.lacounty.gov/Business-Services/](http://workforce.lacounty.gov/Business-Services/)





## SPECIALIZED PROGRAMS AND SERVICES







(562) 622-0431



<https://acwm.lacounty.gov/entomology-and-plant-pathology-laboratories/>



(626) 575-5484



<https://acwm.lacounty.gov/weed-abatement/>

### PLANT PATHOLOGY & ENTOMOLOGY LABS AGRICULTURAL COMMISSIONER/WEIGHTS AND MEASURES (ACWM)

Insects can cause serious damage to your business landscaping. ACWM can assist in plant identification, diagnosis, and consultation. Their Plant Pathology Laboratory determines what is harming or damaging plants.

ACWM's Entomology Laboratory can identify insects and determine their threat to gardens, crops, landscaping, plants, and even people, including previously unknown species.

### WEED ABATEMENT & BRUSH CLEARANCE AGRICULTURAL COMMISSIONER/WEIGHTS AND MEASURES (ACWM)

ACWM hires contractors to perform weed abatement and brush clearance work. Your business can utilize the services or become a vendor and provide the service. In some cases, your business will find ACWM services to be cost effective in comparison to private brush removal businesses. ACWM services can protect against fire threats, remove illegally dumped materials, and reduce pest problems, whether they provide the clearance or only provide consultation.

### VERTEBRATE PEST CONTROL AGRICULTURAL COMMISSIONER/WEIGHTS AND MEASURES (ACWM)

Vertebrate pests, such as rodents, can attack crops and spread diseases. Coyotes who have become aggressive are a threat to pets and even humans. Protect your business from pests by contacting ACWM, which can provide consultation and removal of vertebrate pests



(626) 575-5462



<https://acwm.lacounty.gov/about-pest-management/>

### METROLOGY LAB AGRICULTURAL COMMISSIONER/WEIGHTS AND MEASURES (ACWM)

ACWM offers Metrology Laboratory services to test meters, including utility meters, and standards. They can determine the exact volume of the "gallon" liquid containers being manufactured by a business and test manufactured scales.

The Metrology Lab is responsible for calibration of field standards used by weights and measures inspectors in the testing of commercial measuring and weighing devices that are in use in the LA County. It also offers fee-based calibration services to customers in the areas of mass and volume.



(562) 622-0419



<https://acwm.lacounty.gov/metrology-laboratory/>



**MEDIATION**  
DEPARTMENT OF CONSUMER AND  
BUSINESS AFFAIRS (DCBA)

If you want to settle a dispute outside of court, mediation is a great alternative. DCBA offers free mediation services, both community and court-connected, to the residents and businesses of Los Angeles County.

In mediation, a neutral third party (mediator) helps you resolve your dispute by guiding the discussion and helping both sides reach a solution or agreement to the dispute.



(800) 593-8222



<http://dcba.lacounty.gov/mediation-small-claims/>



(800) 593-8222



<http://dcba.lacounty.gov/small-claims-and-mediation/>

**SMALL CLAIMS COURT ASSISTANCE**  
DEPARTMENT OF CONSUMER AND  
BUSINESS AFFAIRS (DCBA)

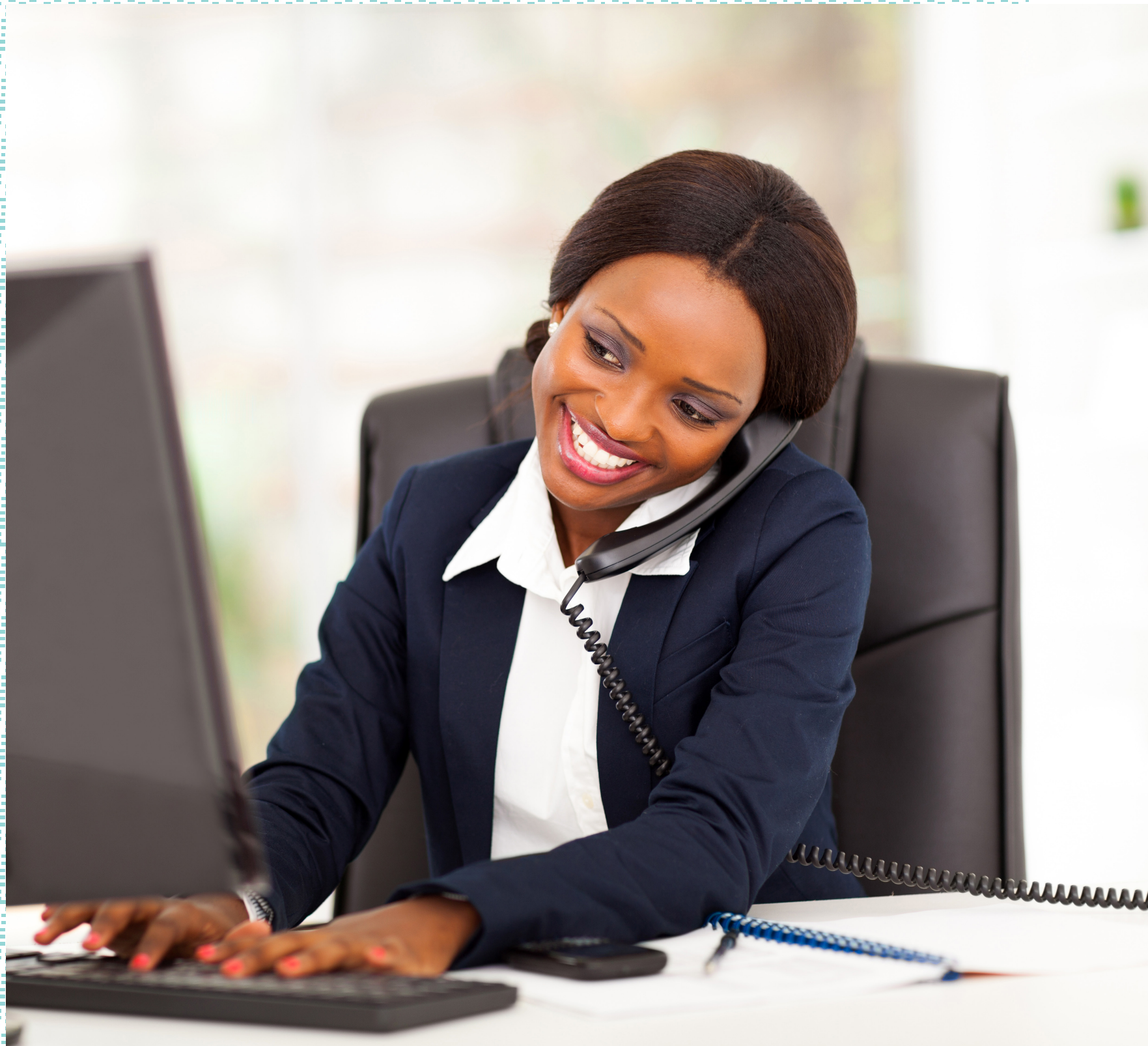
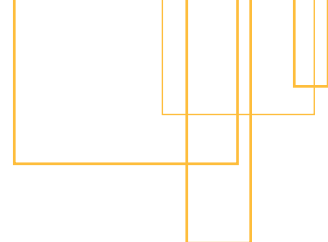
Do you need help filing or responding to a Small Claims case? DCBA provides Small Claims Advisory services and can help you with:

- How to sue in small claims court
- Filling court papers
- Preparing for your day in court
- Checking Your Case Status
- And more!

**DIRECT ASSESSMENTS**  
DEPARTMENT OF AUDITOR-CONTROLLER

A direct assessment is a non-ad valorem amount levied on a per parcel basis encompassing numerous types of items such as annual charges for services, improvement district charges, special taxes, and fees. Direct assessments are usually levied by taxing jurisdictions such as special districts. Many direct assessments provide a benefit directly to a property such as garbage collection, sewer, lights and landscaping maintenance, and mosquito abatement. The phone number for each direct assessment is listed on the property tax bill and can be obtained at [auditor.lacounty.gov/direct-assessments](http://auditor.lacounty.gov/direct-assessments)





## COUNTY DEPARTMENTS

This appendix provides a description of each county department. LA County services are generally for businesses in unincorporated areas unless indicated otherwise. To determine if a business is in an unincorporated area, please search:<http://lacounty.maps.arcgis.com/apps/webappviewer/index.html?id=7700eea9d54d46b18efb615f86cba25c>

## Agricultural Commissioner/ Weights and Measures (ACWM)

The Department of Agricultural Commissioner/Weights and Measures (ACWM) provides environmental protection, defense of agriculture and horticulture, and marketplace integrity through enforcement of federal, State, and County laws, regulations, and ordinances. Services include ensuring a safe supply of food and water, protecting consumers and businesses from fraud, preventing misuse of pesticides, overseeing pest management activities, and preventing exotic pest infestations.



[acwm.lacounty.gov](http://acwm.lacounty.gov)

## Animal Care and Control (ACC)

The LA County Department of Animal Care and Control is one of the largest and most progressive animal control agencies in the United States. Our seven animal care centers serve unincorporated Los Angeles County and 47 contract cities with a combined total population of over 3 million residents. We cover more than 3,400 square miles of cities, deserts, beaches, and mountains; from the Antelope Valley in the north to the Palos Verdes Peninsula in the south, as far east as the border of San Bernardino County, and west to Thousand Oaks. We provide animal control and rescue services in our service areas 24 hours a day, seven days a week.



[animalcare.lacounty.gov](http://animalcare.lacounty.gov)

## Assessor

The Assessor identifies all real estate and business property that is subject to taxation, establishes values for these properties in accordance with state law, and applies tax-saving exclusions and exemptions. Each year, an Assessment Roll is produced listing property values across the County as well as year-over-year change. This work serves as the foundation of our property tax system, which supports local public services.



[assessor.lacounty.gov](http://assessor.lacounty.gov)

## Department of Auditor-Controller

The Los Angeles County Auditor-Controller provides financial leadership and expert advice on a wide range of fiscal matters; advocates for financial integrity and accountability in all County business practices; promotes financial policies, procedures and internal control guidelines for County department financial operations; exercises accounting control over all financial transactions of the County and is the controller for joint partnerships and nonprofit corporations. The Auditor-Controller acts as paymaster, issuing checks to vendors, employees, child support payments, judgments and damages, and other claims against the County. The Department also performs department audits, management audits, and criminal and administrative investigations of fraud and misconduct within County government. Auditor-Controller performs mandated property tax functions, including extending property tax rolls, accounting for funds allocated to community redevelopment agencies, and apportioning property taxes collected. Additionally, the Auditor-Controller accounts for all welfare checks, including providing related banking services.

The County Fraud Hotline is available to members of the public to submit anonymous reports of fraud, waste, and abuse involving County employees or operations to the Fraud Hotline, 24/7. For more information you may visit <http://fraud.lacounty.gov>, email [hotline@auditor.lacounty.gov](mailto:hotline@auditor.lacounty.gov) or call (800) 544-6861.

The Auditor-Controller investigates bid rigging, conflicts of interest, and unfair/uncompetitive practices in County contracting and procurement, County employee misconduct such as soliciting bribes, gratuities or kickbacks related to purchasing, contracting, or the performance of official County duties (e.g., a restaurant or building inspector seeking payment in exchange for a grade or permit, etc.), and abuse of County business preference programs. The intent of the investigations is to support the integrity of the County's business, contracting, and procurement processes and help to ensure a level playing field and fair access to County business opportunities.



[auditor.lacounty.gov](http://auditor.lacounty.gov)



## Business License Commission



[blc.lacounty.gov](http://blc.lacounty.gov)

The Business License Commission holds hearings as needed on Wednesdays at 9:00 a.m. in Room 374-A of the Kenneth Hahn Hall of Administration, 500 West Temple Street, Los Angeles, California, 90012, to determine whether to grant, deny, modify, suspend or revoke licenses, including charitable solicitation information cards.

The Commission is governed by Title 7 of the Los Angeles County Code - Business License with authority in all unincorporated areas of the County, and also provides business licensing for Los Angeles County contract cities such as Malibu, Santa Clarita and Westlake Village. Business licenses requiring Commission action include, but are not limited to: taxicab franchises, taxicab licenses, adult entertainment licenses, dance licenses, bookstores, billiard rooms, medical marijuana dispensaries, restaurants, salvage dealers, recycling centers, bingo operators, exhibitions, carnivals, circuses, health spas, massage parlors/technician, pictures arcades, rifle ranges, and private schools.

## County Development Authority (LACDA)

The LA County Development Authority (LACDA) serves in the LA County as an affordable housing, and community and economic development agency. The LACDA's wide-ranging programs benefit residents and business owners in the unincorporated Los Angeles County areas and in various incorporated cities that participate in different LACDA programs. The agency's four main activity areas are subsidized housing, housing development and preservation, community development, and economic development.



[lacda.lacounty.gov](http://lacda.lacounty.gov)

## Department of Consumer & Business Affairs (DCBA)

The LA County Department of Consumer and Business Affairs (DCBA) serves consumers, businesses, and communities through education, advocacy, and complaint resolution. Our mission is to create a fair and vibrant marketplace for consumers and businesses.



[dcba.lacounty.gov](http://dcba.lacounty.gov)



## Office of Emergency Management (OEM)

The Office of Emergency Management has the responsibility of comprehensively planning for, responding to and recovering from large-scale emergencies and disasters that impact Los Angeles County. OEM's work is accomplished in partnership and collaboration with first response agencies, as well as non-profit, private sector and government partners.



[ceo.lacounty.gov/emergency-management](http://ceo.lacounty.gov/emergency-management)

## Fire Department

The mission of the Los Angeles County Fire Department is to protect lives, the environment, and property by providing prompt, skillful, and cost-effective fire protection and life safety services. The Fire Department services include public safety, firefighting, emergency medical services, LA County ocean lifeguards, urban search and rescue, heavy equipment, and air operations.



[fire.lacounty.gov](http://fire.lacounty.gov)

In compliance with State guidelines, each governmental agency designated by the State of California as a Certified Unified Program Agency (CUPA) is authorized to apply statewide standards to each facility within its jurisdiction that treats on site or generates hazardous waste, operates underground storage tanks, or stores hazardous materials. CUPA's are mandated by the State to establish a single billing statement process for the collection of the fees and surcharges associated with the practices of each of the regulated businesses. Some agencies designated as CUPA's collect billing information directly from the facilities themselves. On the other hand, billing information can be supplied to the CUPA by each Participating Agency (PA) that falls within the jurisdiction of that CUPA and that regulates businesses under the Unified Program.



[publichealth.lacounty.gov](http://publichealth.lacounty.gov)

## Department of Public Health, Environmental Health Division (DPH EHD)

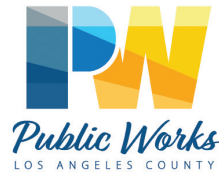
The Environmental Health Division (EHD) of the Department of Public Health (DPH) strives to promote health and quality of life by identifying, preventing, and controlling harmful environmental factors in Los Angeles County. The mission of EHD is to assess environmental conditions and reduce exposure to health risks, and to educate the public on sources of environmental risk so they are empowered to protect themselves, their families, and their communities. EHD is responsible for the enforcement and education of federal, state, and local laws and regulations relating to environmental factors which affect public health and safety.

## Internal Services Department (ISD)

The Internal Services Department (ISD) provides Technology, Facilities, and Administrative Services for LA County Departments. ISD also oversees Purchasing & Contracts and Energy Sustainability.



[isd.lacounty.gov](http://isd.lacounty.gov)



## Department of Public Works (DPW)

The Department of Public Works (DPW) works with the applicant to ensure the business is established in an orderly, safe, healthy, and sustainable manner with minimal impacts to the public. DPW helps people build their dreams and ensure safe and healthy homes and communities. Once the applicant chooses a suitable site for their project that meets Department of Regional Planning zoning requirements, DPW provides several services to ensure the business meets regulations and has the appropriate permits.



[dpw.lacounty.gov](http://dpw.lacounty.gov)



## Department of Regional Planning (DRP)

The Department of Regional Planning performs all land use planning functions for the unincorporated areas of Los Angeles County. Services include long range planning, land development counseling, permit application intake and review, environmental review, and zoning enforcement for each of our County unincorporated communities. DRP is here to help you establish and grow your business.



[planning.lacounty.gov](http://planning.lacounty.gov)



## County Treasurer and Tax Collector (TCC)

The mission of the Los Angeles County Treasurer and Tax Collector (TTC) is to bill, collect, invest, borrow, safeguard, and disburse monies and properties. We do this on behalf of the County, other government agencies and entities, and private individuals as specified by law. The Department also provides enforcement, consulting, estate administration, and public information services. The TTC strives to serve its customers by providing timely and accurate services in a manner that is fair, legal, and courteous. To meet our service obligations, we use technical expertise employing modern, innovative, cost-effective, and flexible methodologies.



[ttc.lacounty.gov](http://ttc.lacounty.gov)

## Registrar-Recorder/County Clerk

The Registrar-Recorder/County Clerk is comprised of three departments:

- 1) The County Clerk's Office is responsible for marriage license issuance, the performance of civil marriage ceremonies, fictitious business name filings and indexing, qualification and registration of notaries, as well as miscellaneous statutory issuance of oaths and filings.
- 2) The Recorder's Office is responsible for recording legal documents that determine ownership of property, as well as maintaining files of birth, death, marriage and real estate records for Los Angeles County.
- 3) The Registrar's Office is also responsible for the registration of voters, maintenance of voter files, conduct of federal, state, local and special elections and the verification of initiative, referendum and recall petitions.



[lavote.net](http://lavote.net)

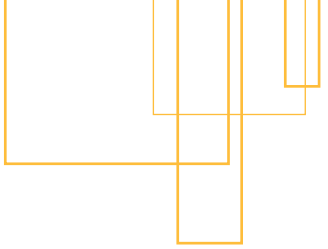
## Workforce Development, Aging and Community Services (WDACS)

The mission of Workforce Development, Aging and Community Services (WDACS) is to connect communities and improve the lives of all generations in Los Angeles County. We achieve our mission through effective, partnership-driven services and initiatives that connect individuals to careers and employers to a skilled workforce; ensure the well-being of older and dependent adults in the community; resolve conflict and improve human relations in our diverse County.

The Workforce Development branch oversees the Los Angeles County America's Job Centers of California (AJCCs), which provide services to businesses and job seekers.



[wdacs.lacounty.gov](http://wdacs.lacounty.gov)



## OTHER PROGRAMS

This appendix includes a few important federal, state, and regional entities that provide business services.



# Federal

## US SMALL BUSINESS ADMINISTRATION (SBA)

The U.S. Small Business Administration helps Americans start, build, and grow businesses.

The SBA was created in 1953 as an independent agency of the federal government to aid, counsel, assist and protect the interests of small business concerns, to preserve free competitive enterprise and to maintain and strengthen the overall economy of our nation.

The SBA provides access to capital, entrepreneurial development, government contracting, and advocacy.



<https://www.sba.gov/>



<https://www.edd.ca.gov/>



# State of California

## EMPLOYMENT DEVELOPMENT DEPARTMENT (EDD)

The Employment Development Department (EDD) is one of the largest state departments with employees at hundreds of service locations throughout the state and offers a wide variety of services to millions of Californians under the Job Service, Unemployment Insurance (UI), state Disability Insurance (SDI), Workforce Investment, and Labor Market Information programs. As California's largest tax collection agency, EDD also handles the audit and collection of payroll taxes and maintains employment records for more than 18 million California workers.

One of the largest state departments, EDD has employees located at hundreds of service locations throughout the State who provide many important services to millions of Californians each year including:

- Assisting California employers with their labor needs
- Helping California job seekers obtain employment
- Administering the federally-funded workforce investment programs for adults, dislocated workers, and youth
- Assisting disadvantaged recipients in becoming self-sufficient
- Helping unemployed and disabled workers through the administration of the UI and SDI programs
- Supporting state activities and benefit programs by collecting and administering employment-related taxes (UI, DI, Employment Training Tax, and Personal Income Tax withholding)

For more than 70 years, the EDD has connected millions of job seekers and employers in an effort to build the economy of the Golden State.



## Regional

### FILMLA

FilmLA is a 501(c)4 not-for-profit public benefit organization and the official film office of the City and LA County, among an ever-increasing roster of local municipalities. FilmLA streamlines and enhances the on-location filmmaking process for communities and content creators, to ensure the Greater Los Angeles economy continues to thrive. Professional still, film, video shooting permits-FilmLA



(213) 977-8600



info@filmlainc.com



filmla.com



6255 W. Sunset Blvd., 12th Floor,  
Hollywood 90028



OTHER PROGRAMS



### LOS ANGELES COUNTY ECONOMIC DEVELOPMENT CORPORATION (LAEDC)

The Los Angeles County Economic Development Corporation (LAEDC) was founded in 1981 by the LA County Board of Supervisors as a non-profit, public-benefit organization to harness the power of the private sector in collaboration with L.A. County, to guide economic development, and to create more widely shared prosperity for all communities within our region.

LAEDC collaborates with all stakeholders in the region including education, business, and government (inclusive of all 88 cities and 120 unincorporated areas) to provide B.A.R.E. (Business Attraction, Retention, & Expansion) services to businesses and to educate all stakeholders on the power and dynamics of LA County's economic engine.

LAEDC offers free business advisory assistance which includes connecting you to resources, programs and incentives, advocacy, and support in navigating bureaucratic or other barriers that make it difficult to do business.

OTHER PROGRAMS

#### Business Assistance

- (888) 4-LAEDC-1
- [bap@laedc.org](mailto:bap@laedc.org)
- <https://laedc.org/our-services/>

#### Industry-Specific Services

- (213) 236-4863
- [bap@laedc.org](mailto:bap@laedc.org)
- <https://laedc.org/industries/overview/>

#### Institute for Applied Economics

- (888) 213-236-4880
- [IAE@laedc.org](mailto:IAE@laedc.org)
- <https://laedc.org/research-analysis/>

#### World Trade Center Los Angeles

- Michael Smith, Director of International Trade
- [Michael.Smith@LAEDC.org](mailto:Michael.Smith@LAEDC.org)
- <https://laedc.org/wtc/>



## WORKFORCE DEVELOPMENT BOARDS (WDBs)

The Local Workforce Development Area (Local Area) Administrators oversee the Workforce Innovation and Opportunity Act (WIOA) services as designated by the Governor. Factors that are considered in designating these Local Areas include geographic location, population, and commonality of labor market areas.

The Workforce Centers throughout Los Angeles County have been re-branded to America’s Job Center of California (AJCC). As AJCCs, they follow a business services model that provides a fundamentally different approach to serving customers. The model ensures the reliable delivery of services to businesses as well as the sharing of job listings and potential candidates throughout an entire countywide network.

Los Angeles County America’s Job Centers are a collaborative effort between multiple local Workforce Development Areas within the LA County, as well as Los Angeles County Department of Public Social Services/GAIN, Los Angeles Economic Development Corporation, and the California Employment Development Department, who came together to better serve the employment and training needs of the Los Angeles region.

## Workforce Development Boards in LA County

### Los Angeles County

Martha Molina-Aviles  
Los Angeles County Workforce Development,  
Aging and Community Services  
3175 West 6th Street,  
Los Angeles, CA 90020

-  (213) 738-2273
-  (213) 487-0379
-  [wdacs.lacounty.gov](http://wdacs.lacounty.gov)

### City of Los Angeles

Mr. Robert M. Sainz,  
Assistant General Manager  
City of Los Angeles  
Economic & Workforce  
Development Department  
1200 West 7th Street, 6th Floor  
Los Angeles, CA 90017-2349

-  (213) 744-7396
-  (213) 744-9061
-  <http://ewddlacity.com>

### South Bay Consortium

Mr. Jan Vogel, Chief Executive Officer  
South Bay Workforce Development Board  
11539 Hawthorne Boulevard, Suite 500  
Hawthorne, CA 90250

-  (310) 970-7700
-  (310) 970-7711
-  [www.sbwib.org](http://www.sbwib.org)

### Verdugo Consortium

Ms. Judith Velasco, Executive Director  
Verdugo Consortium  
1255 South Central Avenue  
Glendale, CA 91204

-  (818) 937-8031
-  (818) 409-0463
-  [www.glendaleca.gov](http://www.glendaleca.gov)

### SELACO (Southeast Los Angeles County Consortium)

Ms. Yolanda Castro, Executive Director  
SELACO Workforce Development Board  
10900 East 183rd Street, Suite 350  
Cerritos, CA 90703

-  (562) 402-9336
-  (562) 860-4701
-  [www.selaco.com](http://www.selaco.com)

### Foothill Employment and Training Consortium

Ms. Dianne Russell-Carter, Executive Director  
Foothill Workforce Development Board  
1207 East Green Street  
Pasadena, CA 91106

-  (626) 584-8393
-  (626) 584-6782
-  [www.fwbworks.org](http://www.fwbworks.org)

### Pacific Gateway

Mr. Nick Schultz, Executive Director  
City of Long Beach D.B.A. Pacific Gateway  
Workforce Innovation Network  
4811 Airport Plaza Drive, Suite 200  
Long Beach, CA 90815

-  (562) 570-3701
-  (562) 570-3704
-  [www.pacificgatewayworkforce.com](http://www.pacificgatewayworkforce.com)

## MESSAGE FROM THE WDACS ACTING DIRECTOR



The Department of Workforce Development, Aging and Community Services (WDACS) Economic and Business Development Division values your businesses' contributions to boosting the local economy by creating jobs. We hope the Business Solutions Portfolio provides you with valuable information and resources needed to flourish in L.A. County.

I am grateful to the Board of Supervisors for their leadership and vision of aligning County departments to maximize and streamline resources for businesses. I would also like to acknowledge the Chief Executive Office for their support and thank numerous County departments for their collaboration in producing the Business Solutions Portfolio.

The Business Solutions Portfolio is just the beginning of the County's efforts to make starting and growing your business as easy as possible. We look forward to serving you and providing a home for your business in L.A. County.

Thank you,  
Otto Solórzano

A handwritten signature in blue ink that reads "Otto Solórzano".

**Acting Director**  
Workforce Development, Aging,  
and Community Services



