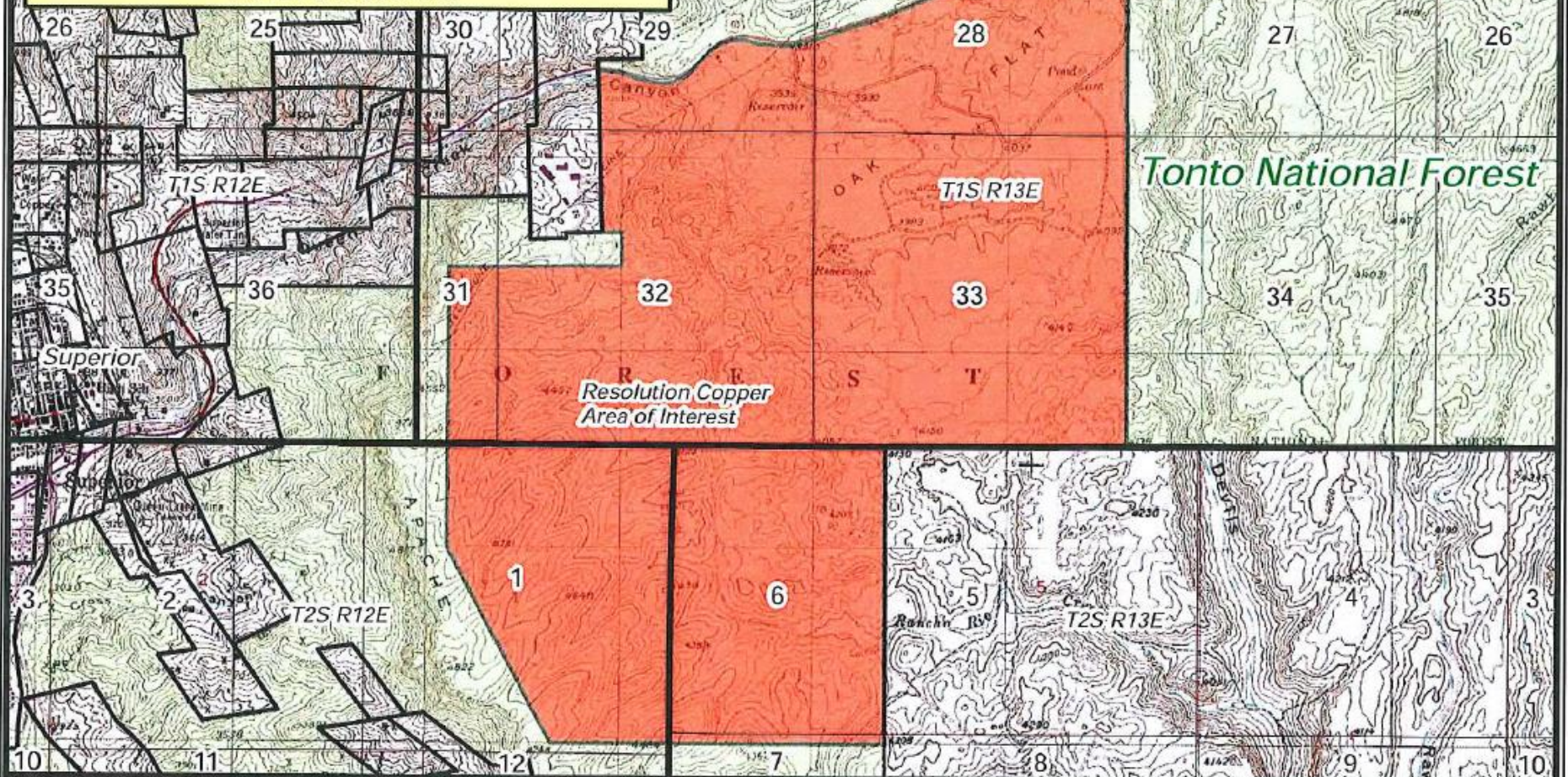


**SOUTHEAST ARIZONA LAND EXCHANGE AND CONSERVATION ACT OF 2013
OAK FLAT LAND EXCHANGE**



Vicinity Map

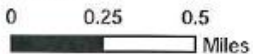


References

U.S. Forest System Lands Boundary limits derived from Region 3 Automated Lands Program source GIS data. Map requested by Congressman Paul Gosar.

Disclaimer

The USDA Forest Service makes no warranty, expressed or implied regarding the data displayed on this map, and reserves the right to correct, update, modify, or replace this information without notification.



Legend

- Private Ownership
- Oak Flat Land Exchange
- U.S. National Forest System Lands



Map Creation Date - February 2013

Sheet 6 of 15

Southeast Arizona Land Exchange and Conservation Act of 2013

Legislative Map H.R. - 687; S.B. 339 - Year 2013

The Southeast Arizona Land Exchange and Conservation Act of 2013
Oak Flat Land Exchange
The land is located in Sections 28, 29, 31, 32, and 33,
Township 1 South, Range 13 East.
Section 6, Township 2 South, Range 13 East.
Section 1, Township 2 South, Range 12 East, Pinal County, Arizona.

U.S. Forest Service - Region 3
Tonto National Forest - Globe Ranger District
U.S. Congressional District 1, Arizona

Copies of this map are available for public
inspection in the Office of the Regional Forester,
Region 3, Albuquerque, New Mexico.