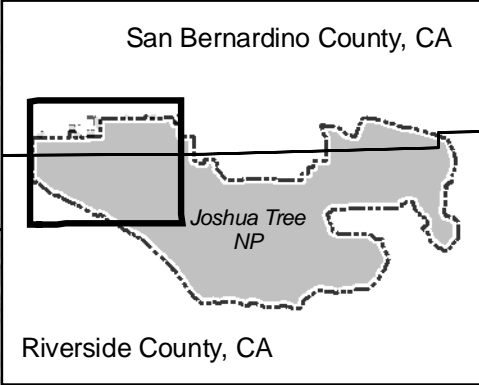
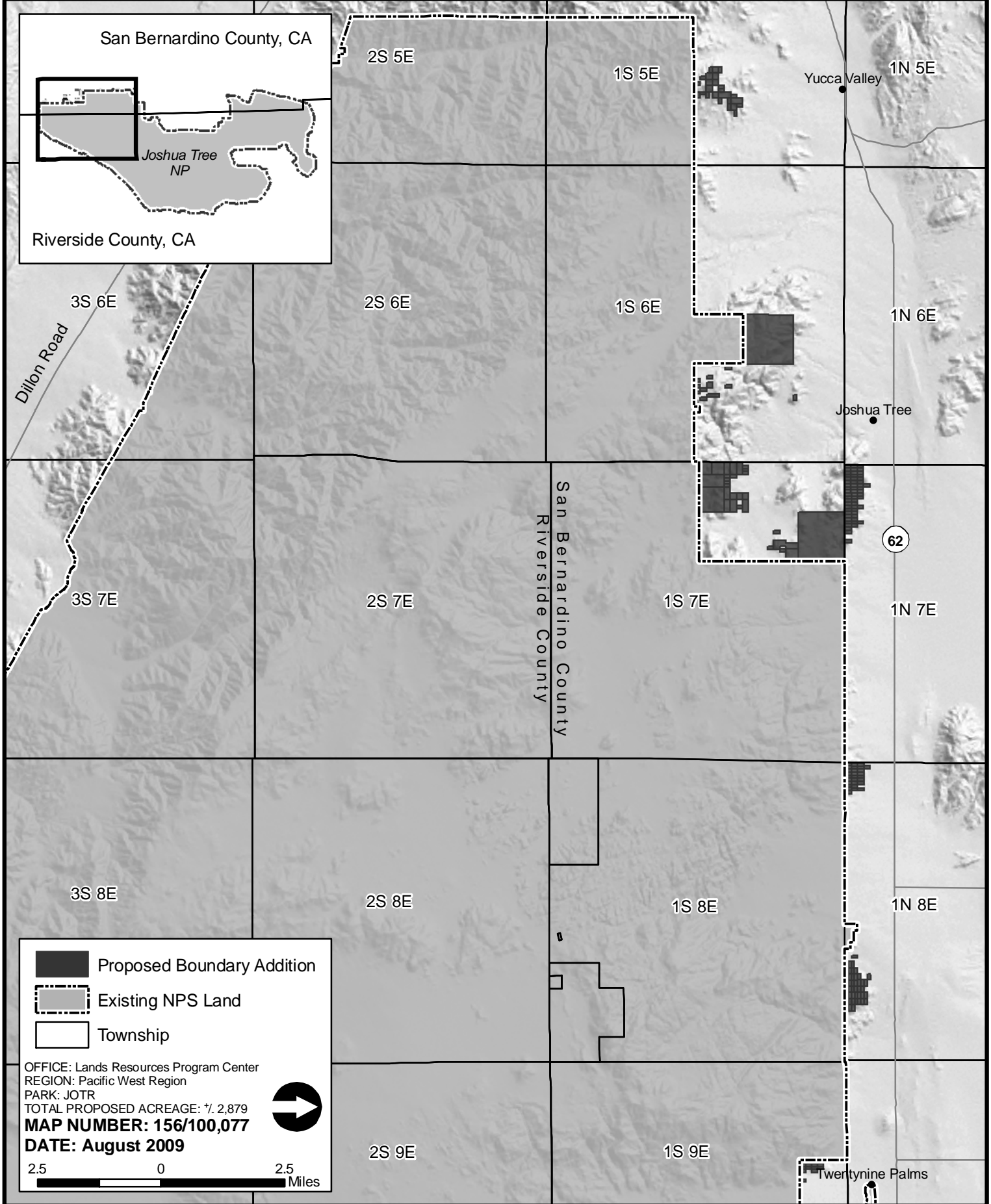


Joshua Tree National Park Proposed Boundary Addition

National Park Service
U.S. Department of the Interior



Legend:

- Proposed Boundary Addition
- Existing NPS Land
- Township

OFFICE: Lands Resources Program Center
REGION: Pacific West Region
PARK: JOTR
TOTAL PROPOSED ACREAGE: ± 2,879
MAP NUMBER: 156/100,077
DATE: August 2009

2.5 0 2.5 Miles