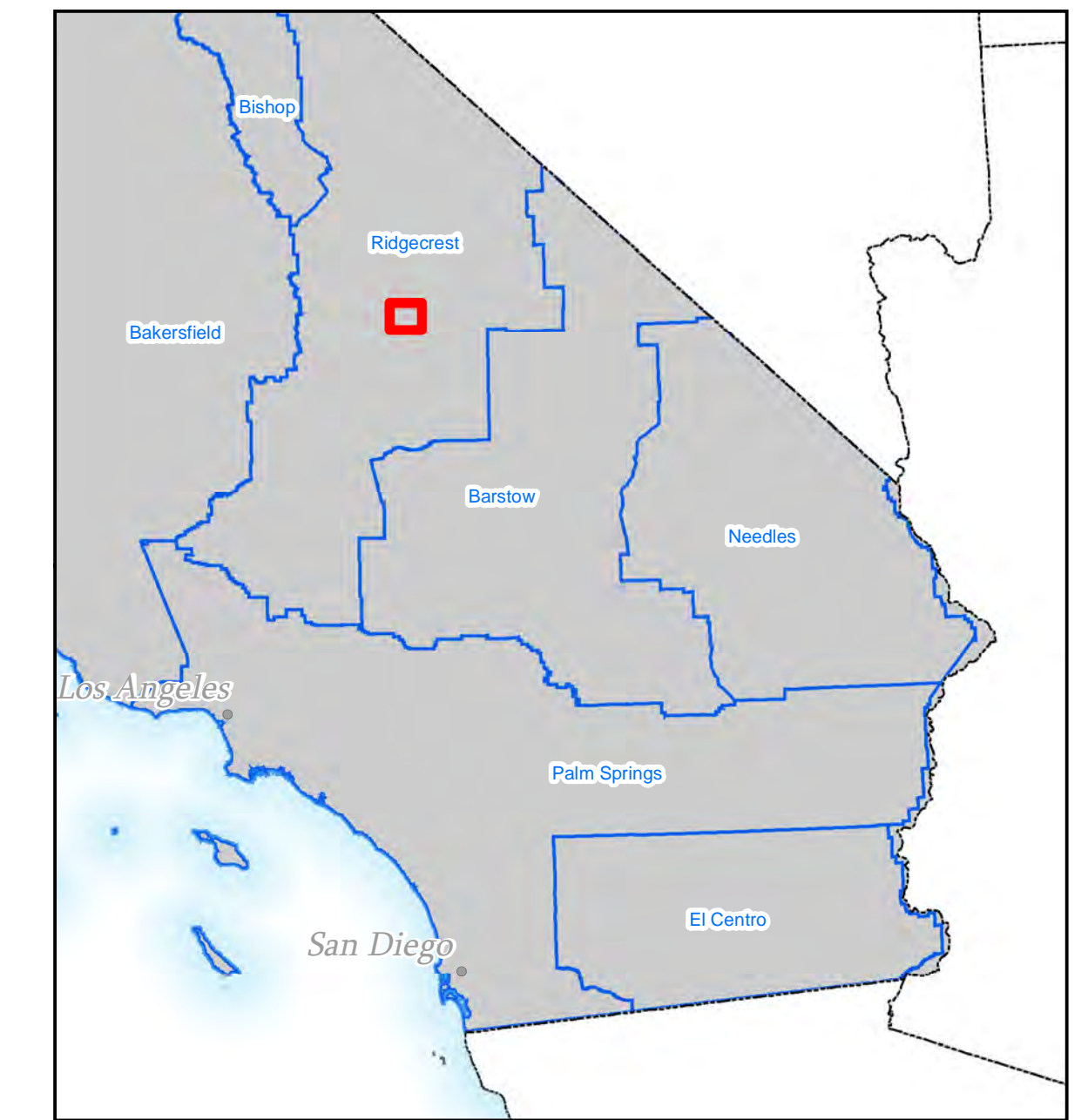
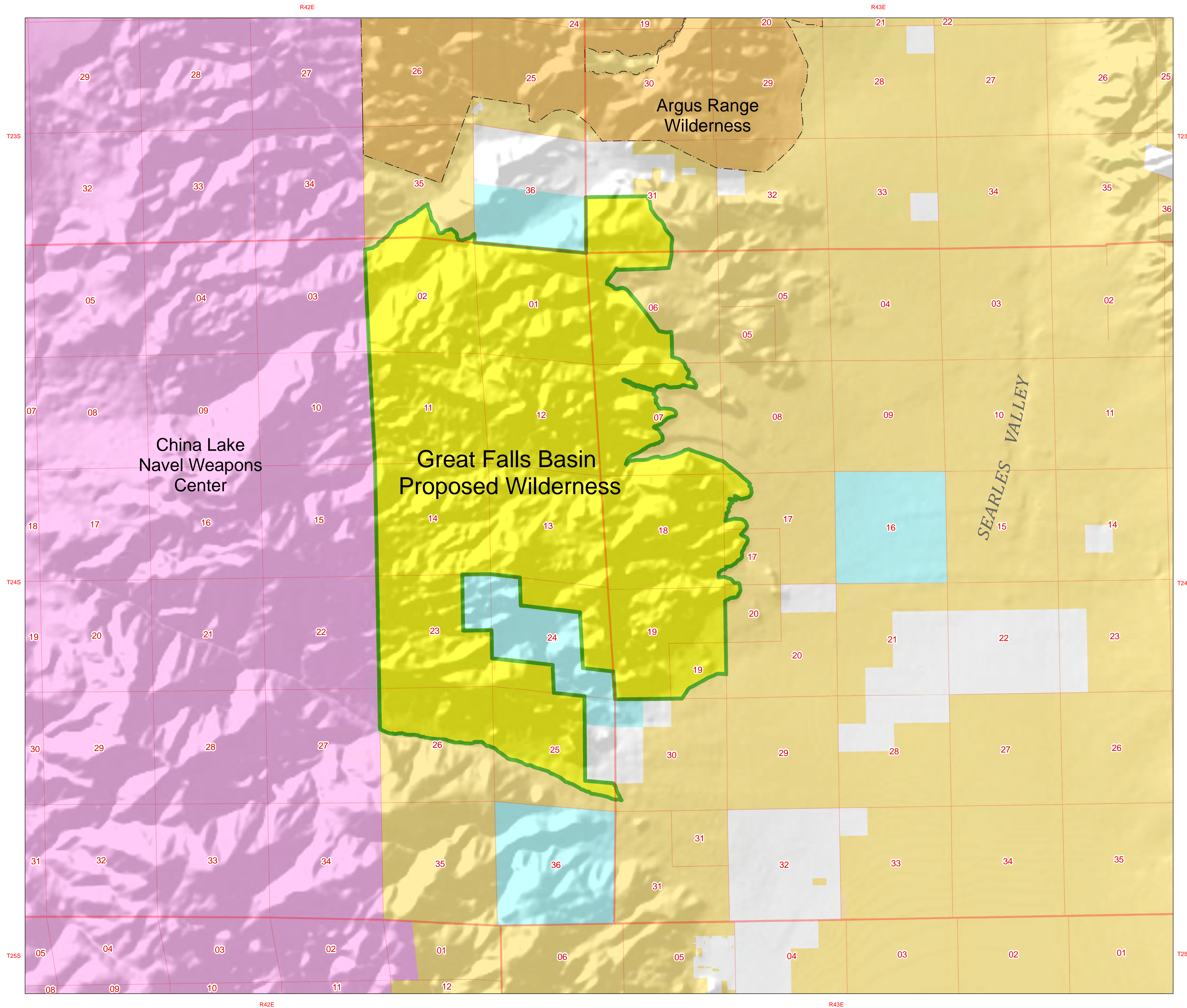
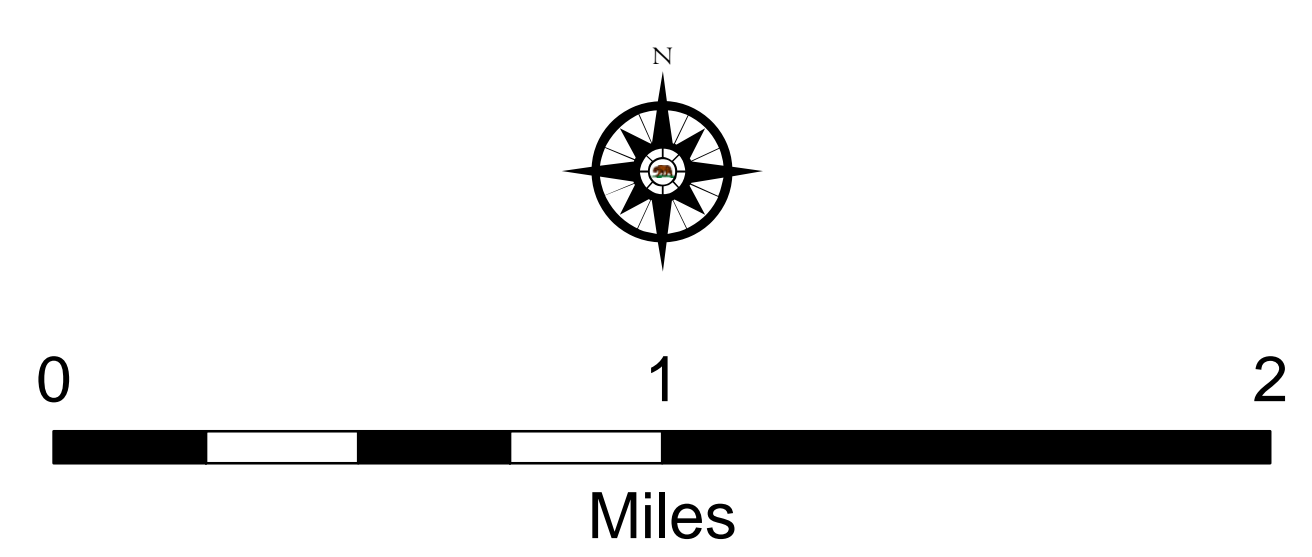


Great Falls Basin Proposed Wilderness August 5, 2015

This map prepared at the request of Representative Paul Cook



- Proposed Wilderness
 - Existing BLM Wilderness Boundary
- Land Status**
- Bureau of Land Management
 - Military
 - State Lands
 - Private/Other



1:20,000 at a page size of 34 in. by 44 in.

No warranty is made by the Bureau of Land Management (BLM). The accuracy, reliability, or completeness of these data for individual use or aggregate use with other data is not guaranteed.

