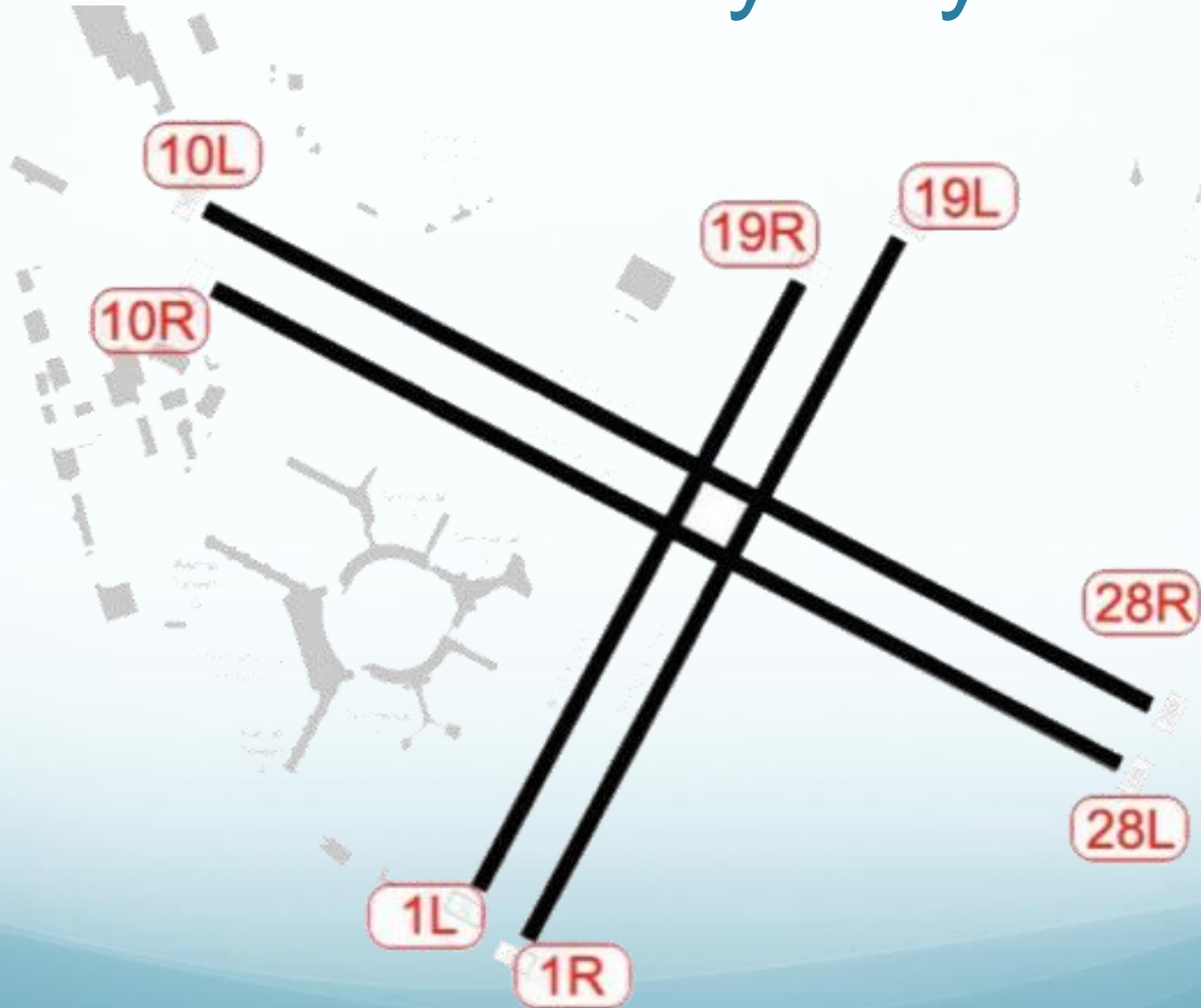


SFO Runway Layout



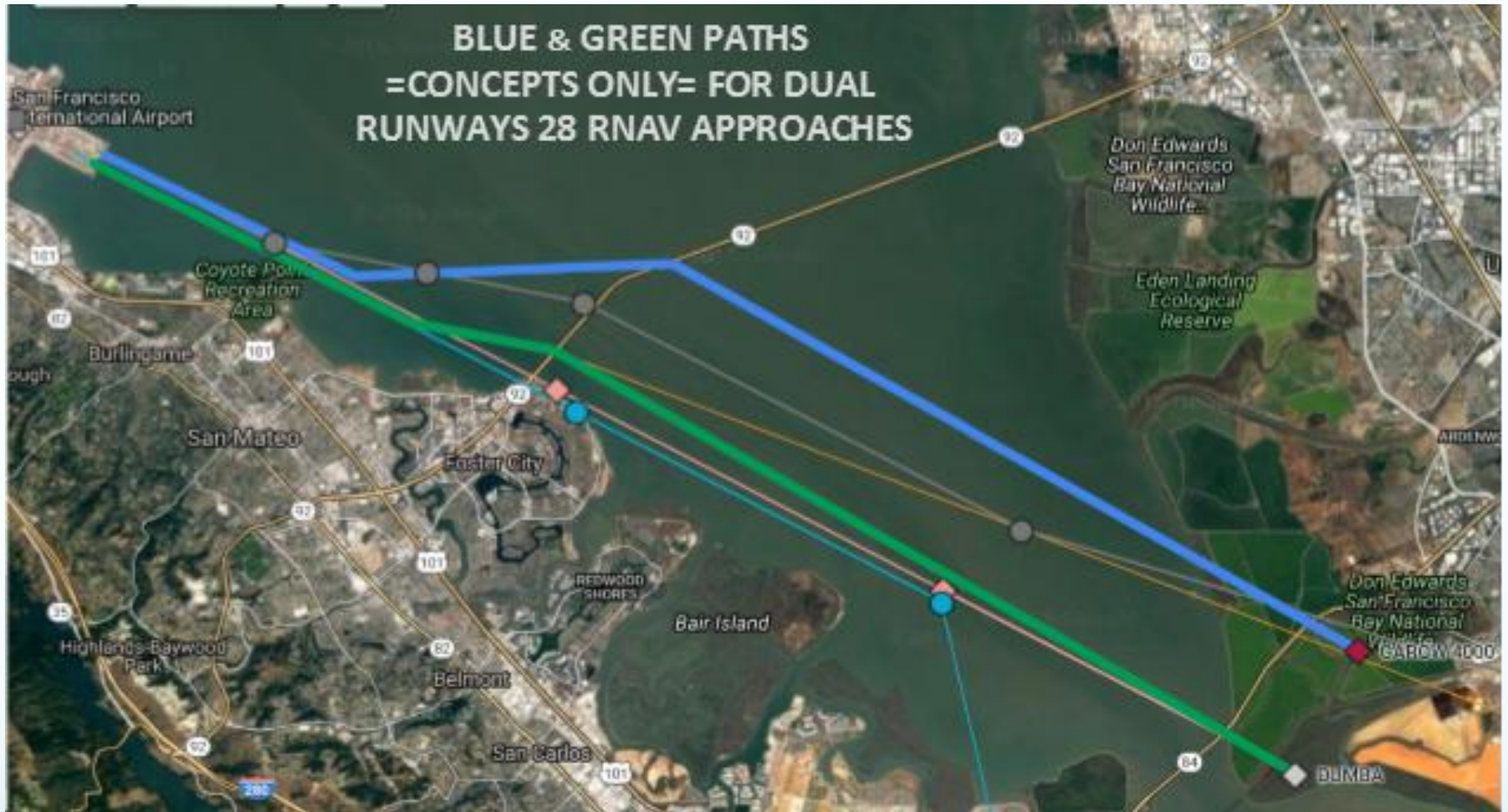
Runway 28L Offset



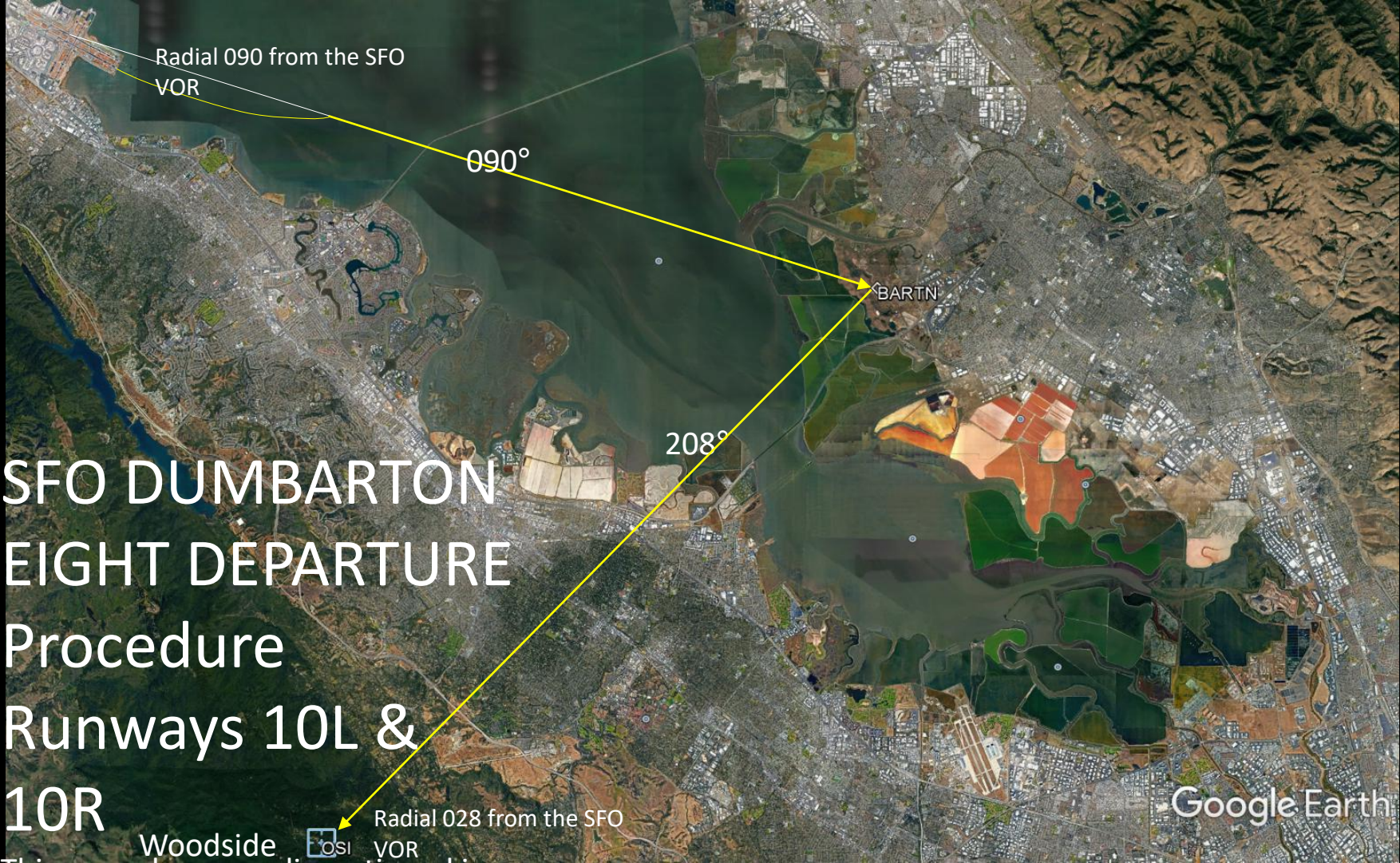
PROCEDURE: Visual Arrivals, Foster City Arrivals



BLUE & GREEN PATHS =CONCEPTS ONLY= FOR DUAL RUNWAYS 28 RNAV APPROACHES

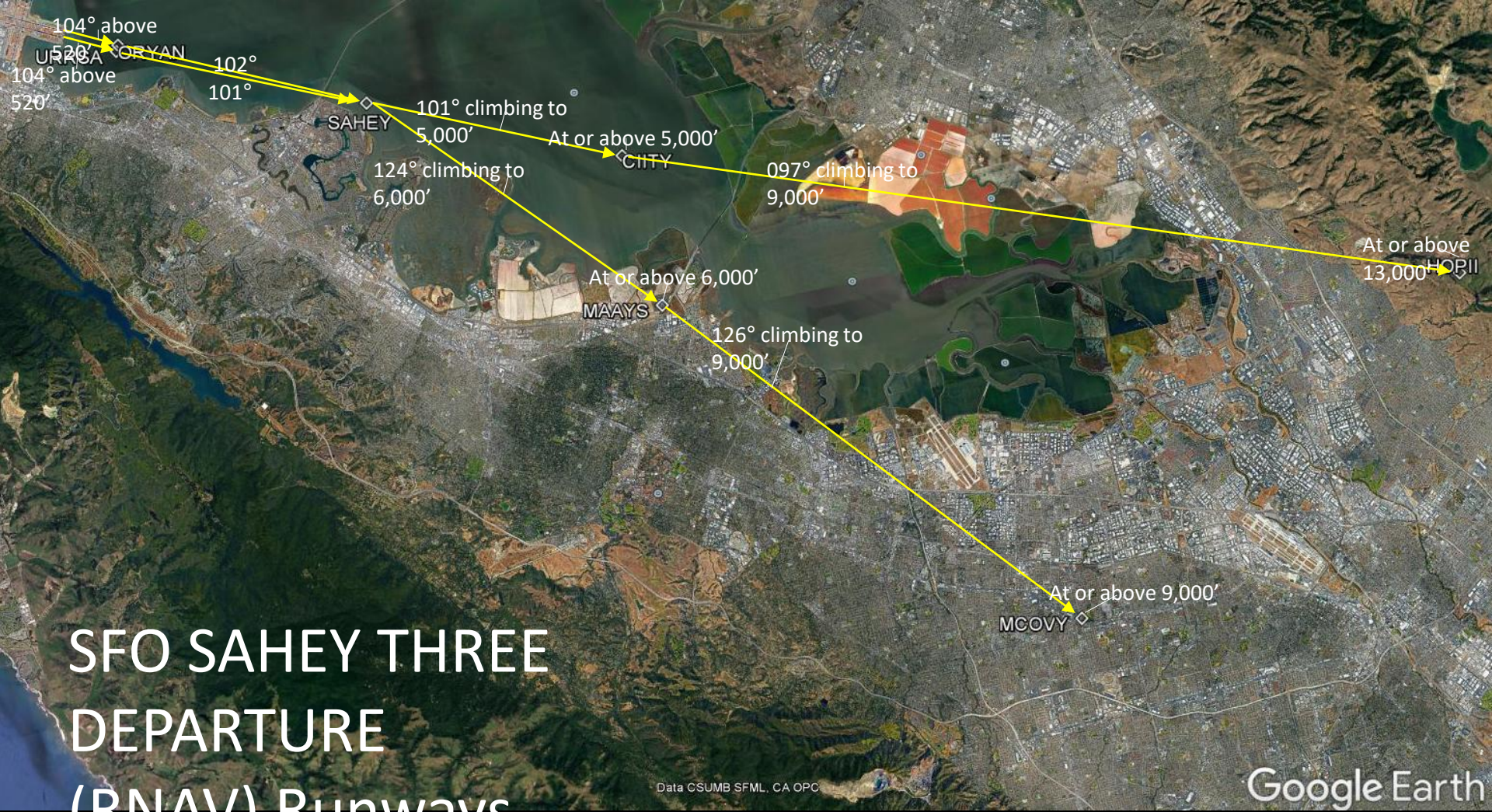


TEAL LINE: existing 28L ILS. **PINK LINE:** existing 28R ILS. **GRAY LINE:** existing RNAV (RNP) Y RWY 28R. **ORANGE LINE:** existing FMS Bridge Visual Approach 28R. **GREEN LINE:** Concept for a possible 28L offset RNAV approach. **BLUE LINE:** Concept for a possible 28R offset RNAV approach. ALL POINTS AND LINES APPROXIMATE.



SFO DUMBARTON EIGHT DEPARTURE Procedure Runways 10L & 10R

This procedure was discontinued in
August 2016

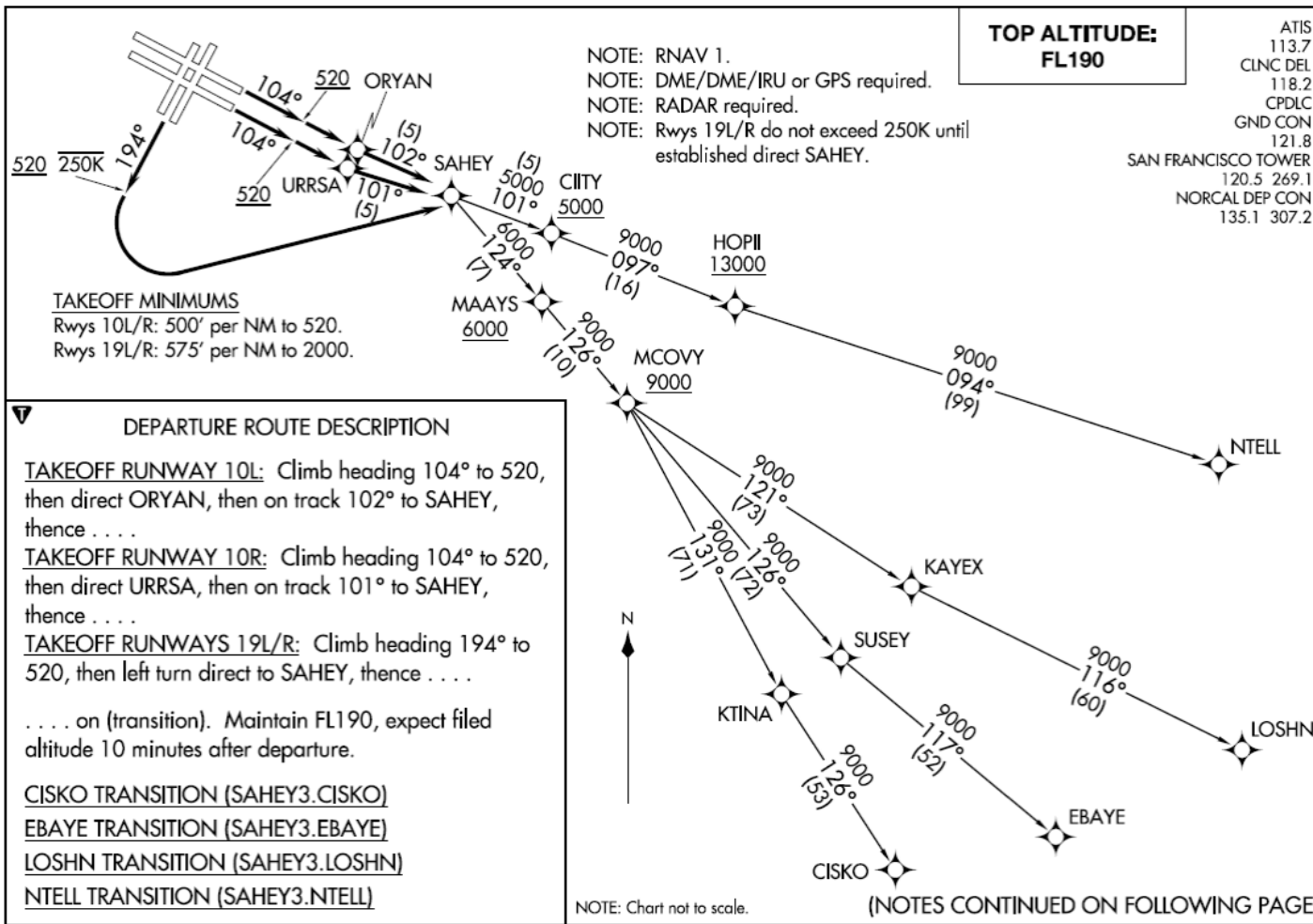


SFO SAHEY THREE DEPARTURE (RNAV) Runways 10L & 10R

Data CSUMB SFML, CA OPC

Google Earth

SAHEY THREE DEPARTURE (RNAV)
(SAHEY3.SAHEY) 20AUG15



SAN FRANCISCO CALIFORNIA
SAN FRANCISCO INTL (SFO)

(SAHEY3.SAHEY) 16203
SAHEY THREE DEPARTURE (RNAV)

SI-375 (FAA)

SAN FRANCISCO INTL (SFO)
SAN FRANCISCO CALIFORNIA