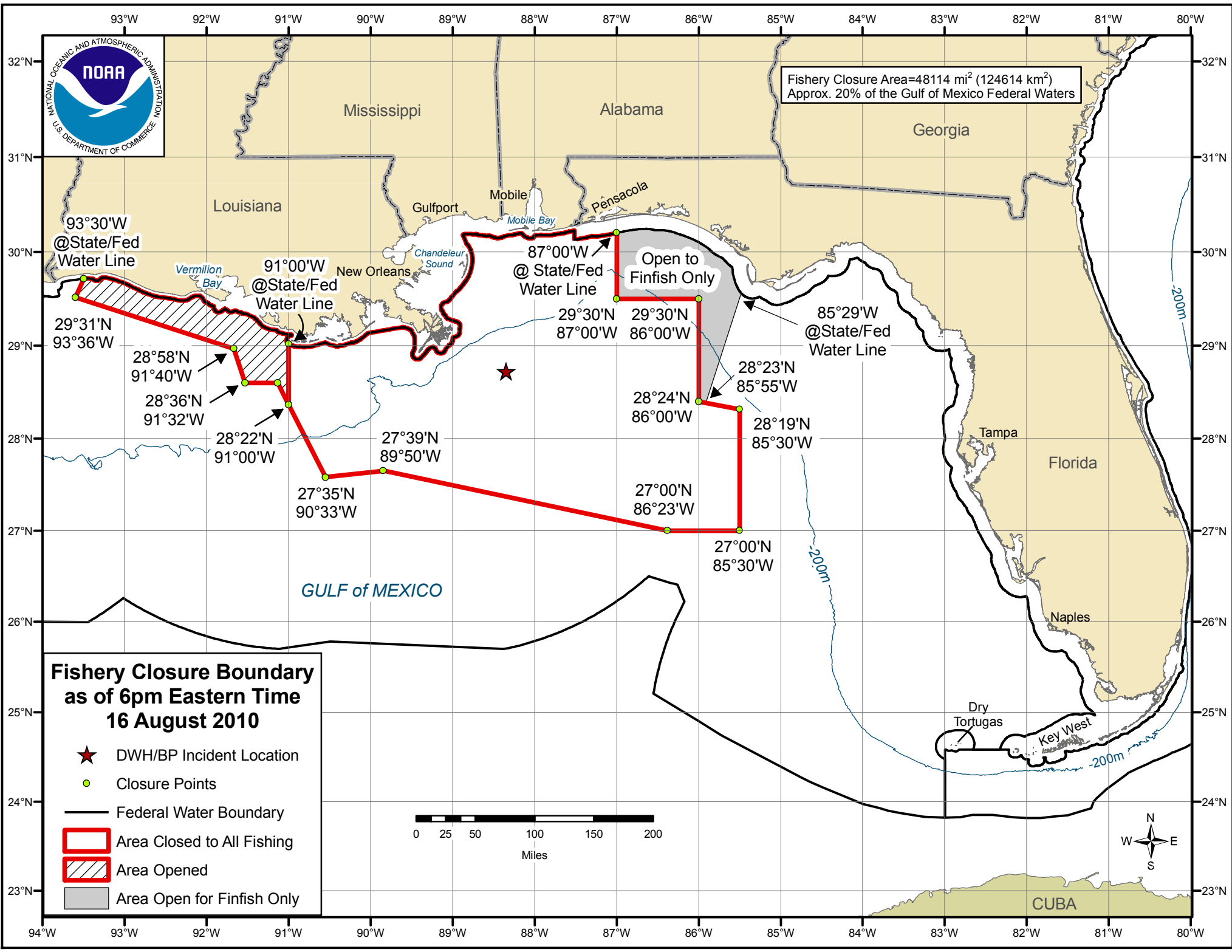


Fishery Closure Area=48114 mi² (124614 km²)
Approx. 20% of the Gulf of Mexico Federal Waters



Fishery Closure Boundary as of 6pm Eastern Time 16 August 2010

- ★ DWH/BP Incident Location
- Closure Points
- Federal Water Boundary
- ▭ Area Closed to All Fishing
- ▨ Area Opened
- ▭ Area Open for Finfish Only

