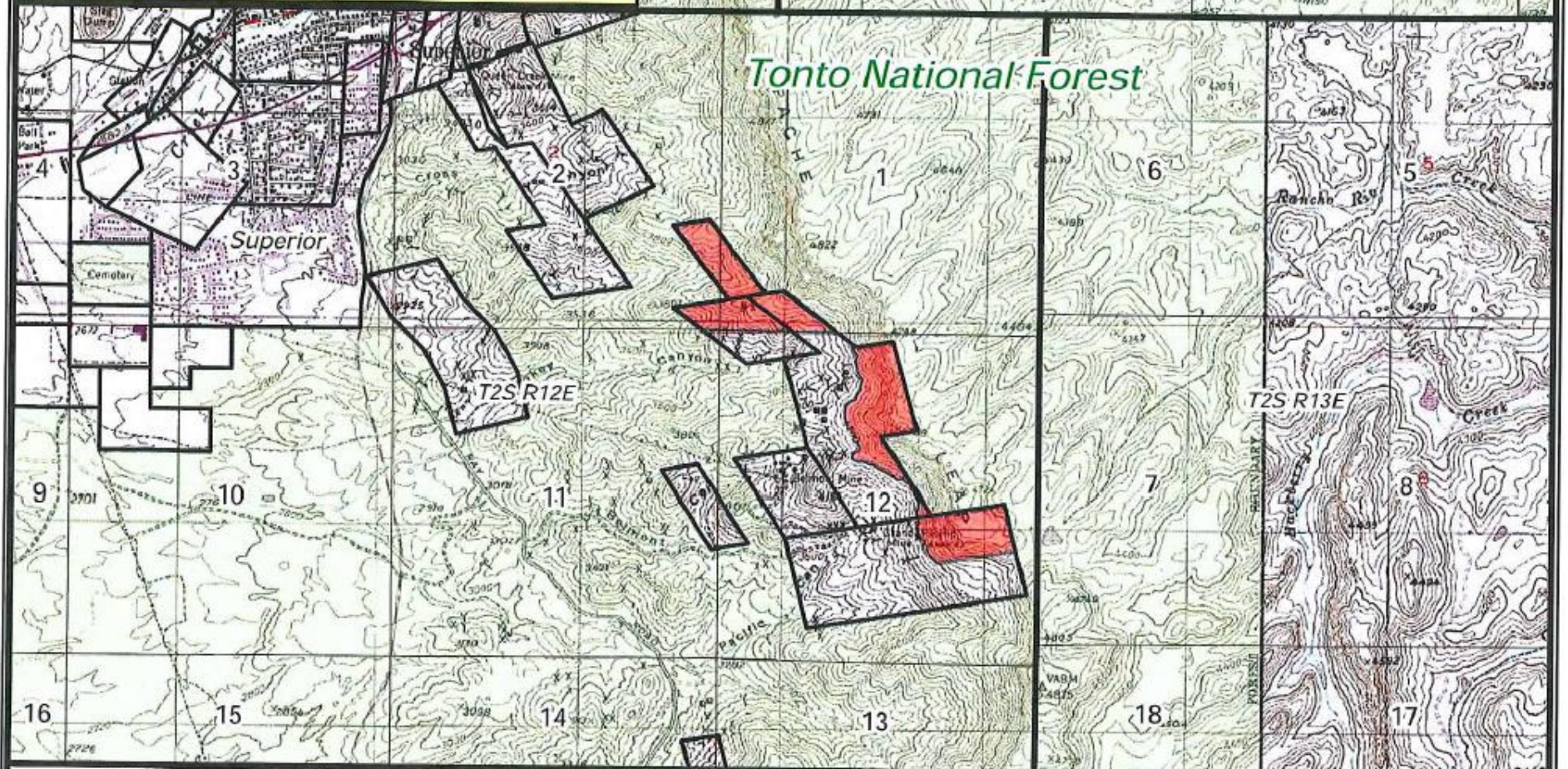
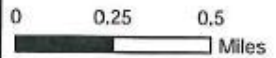


**SOUTHEAST ARIZONA LAND EXCHANGE AND CONSERVATION ACT 2013
APACHE LEAP SOUTH END**



References
 U.S. Forest System Lands Boundary limits derived from Region 3 Automated Lands Program source GIS data.
 Map requested by Congressman Paul Gosar.

Disclaimer
 The USDA Forest Service makes no warranty, expressed or implied regarding the data displayed on this map, and reserves the right to correct, update, modify, or replace this information without notification.



- Legend**
- Private Ownership
 - Apache Leap South End
 - U.S. National Forest System Lands



Map Creation Date - February 2013

Sheet 2 of 15

Southeast Arizona Land Exchange and Conservation Act of 2013
 Apache Leap South End
 Legislative Map H.R. - 687; S.B. 339 - 2013

The Southeast Arizona Land Exchange and Conservation Act of 2013
 Apache Leap South End

The land is located in Sections 1, 2, 12
 Township 2 South, Range 12 East; Pinal County, Arizona.

U.S. Forest Service - Region 3
 Tonto National Forest - Globe Ranger District
 U.S. Congressional District 1, Arizona

Copies of this map are available for public inspection in the Office of the Regional Forester, Region 3, Albuquerque, New Mexico.