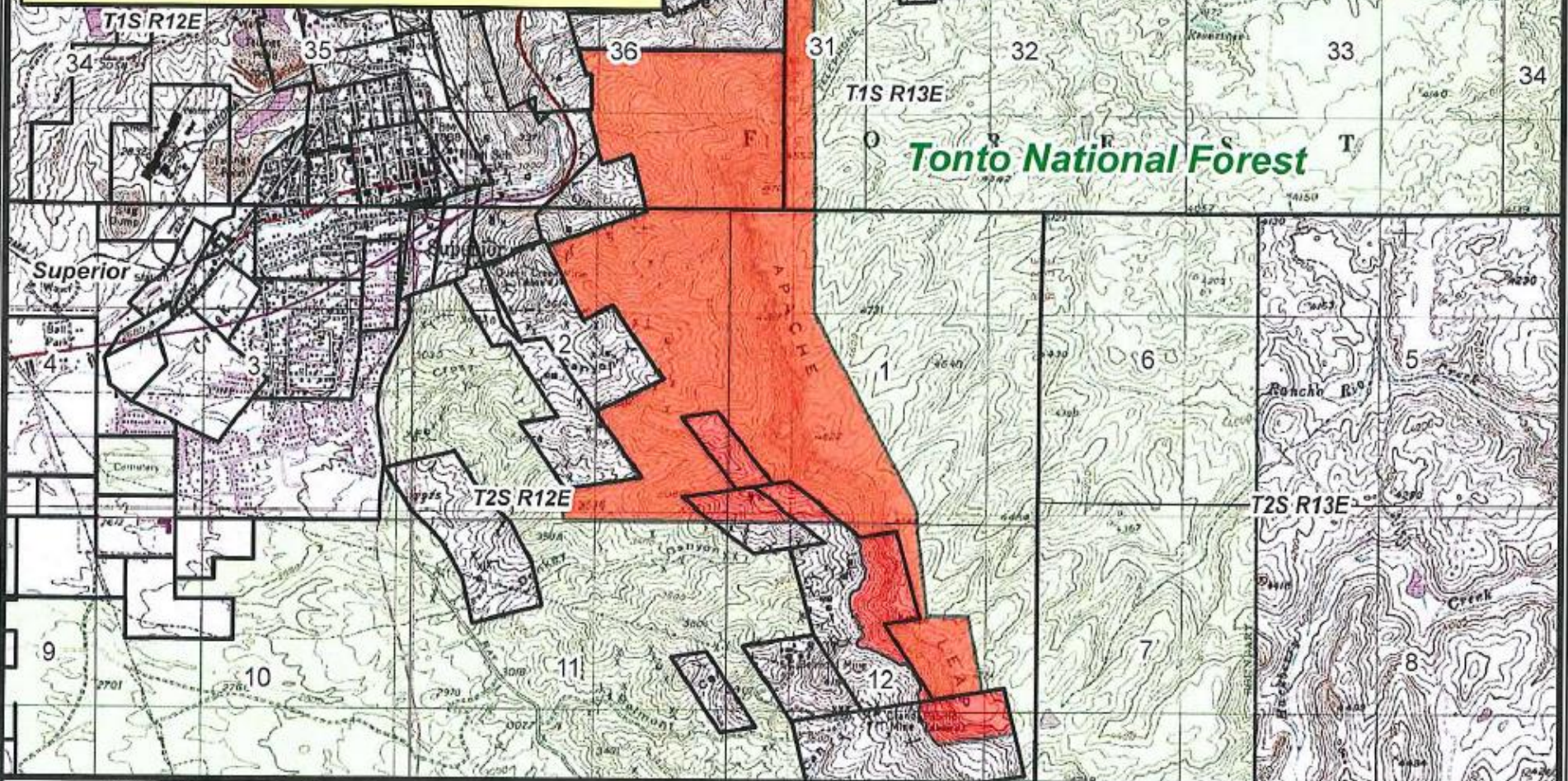


**SOUTHEAST ARIZONA LAND EXCHANGE AND CONSERVATION ACT OF 2013
APACHE LEAP PROTECTION AREA**



References
U.S. Forest System Lands Boundary limits derived from Region 3 Automated Lands Program source GIS data. Map requested by Congressman Paul Gosar.

Disclaimer
The USDA Forest Service makes no warranty, expressed or implied regarding the data displayed on this map, and reserves the right to correct, update, modify, or replace this information without notification.



Legend

- Private Ownership
- Apache Leap Protection Area
- U.S. National Forest System Lands

Map Creation Date - February 2013

Sheet 1 of 15

**Southeast Arizona Land Exchange and Conservation Act of 2013
Apache Leap Protection Area**
Legislative Map H.R. - 687; S.B. - 339 - Year 2013

The Southeast Arizona Land Exchange and Conservation Act of 2013 Apache Leap Protection Area
The land is located in Section 36, Township 1 South, Range 12 East; Section 31, Township 1 South, Range 13 East; Sections 1, 2 and 12, Township 2 South, Range 12 East; Pinal County, Arizona.

U.S. Forest Service - Region 3
Tonto National Forest - Globe Ranger District
U.S. Congressional District 1, Arizona

Copies of this map are available for public inspection in the Office of the Regional Forester, Region 3, Albuquerque, New Mexico.