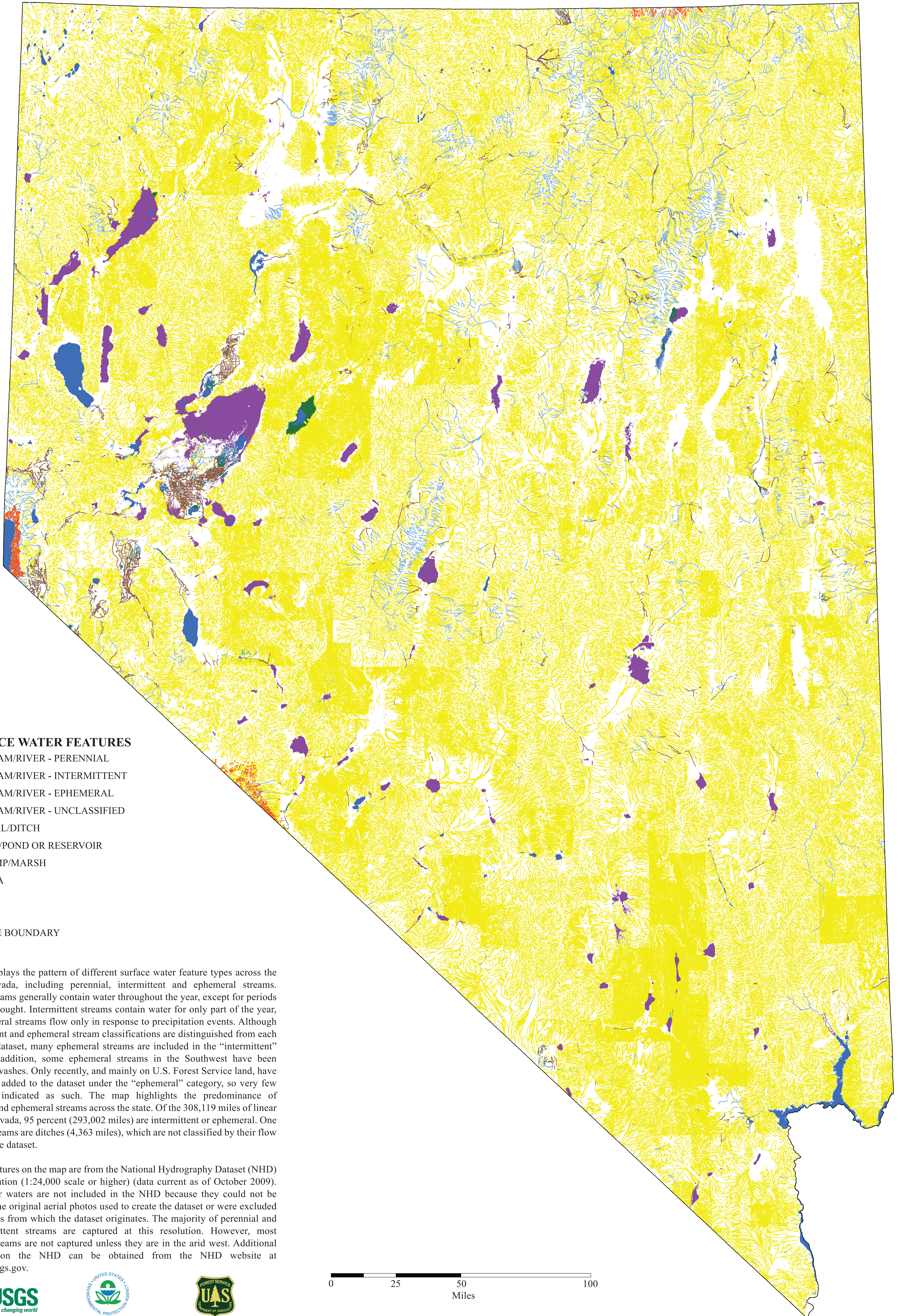











STREAMS AND WATERBODIES IN NEVADA

The National Hydrography Dataset



SURFACE WATER FEATURES

-  STREAM/RIVER - PERENNIAL
-  STREAM/RIVER - INTERMITTENT
-  STREAM/RIVER - EPHEMERAL
-  STREAM/RIVER - UNCLASSIFIED
-  CANAL/DITCH
-  LAKE/POND OR RESERVOIR
-  SWAMP/MARSH
-  PLAYA
-  WASH

 STATE BOUNDARY

This map displays the pattern of different surface water feature types across the state of Nevada, including perennial, intermittent and ephemeral streams. Perennial streams generally contain water throughout the year, except for periods of extreme drought. Intermittent streams contain water for only part of the year, while ephemeral streams flow only in response to precipitation events. Although the intermittent and ephemeral stream classifications are distinguished from each other in the dataset, many ephemeral streams are included in the "intermittent" category. In addition, some ephemeral streams in the Southwest have been classified as washes. Only recently, and mainly on U.S. Forest Service land, have streams been added to the dataset under the "ephemeral" category, so very few streams are indicated as such. The map highlights the predominance of intermittent and ephemeral streams across the state. Of the 308,119 miles of linear streams in Nevada, 95 percent (293,002 miles) are intermittent or ephemeral. One percent of streams are ditches (4,363 miles), which are not classified by their flow duration in the dataset.

The water features on the map are from the National Hydrography Dataset (NHD) at high resolution (1:24,000 scale or higher) (data current as of October 2009). Many smaller waters are not included in the NHD because they could not be detected on the original aerial photos used to create the dataset or were excluded from the maps from which the dataset originates. The majority of perennial and most intermittent streams are captured at this resolution. However, most ephemeral streams are not captured unless they are in the arid west. Additional information on the NHD can be obtained from the NHD website at <https://nhd.usgs.gov>.



0 25 50 100
Miles