

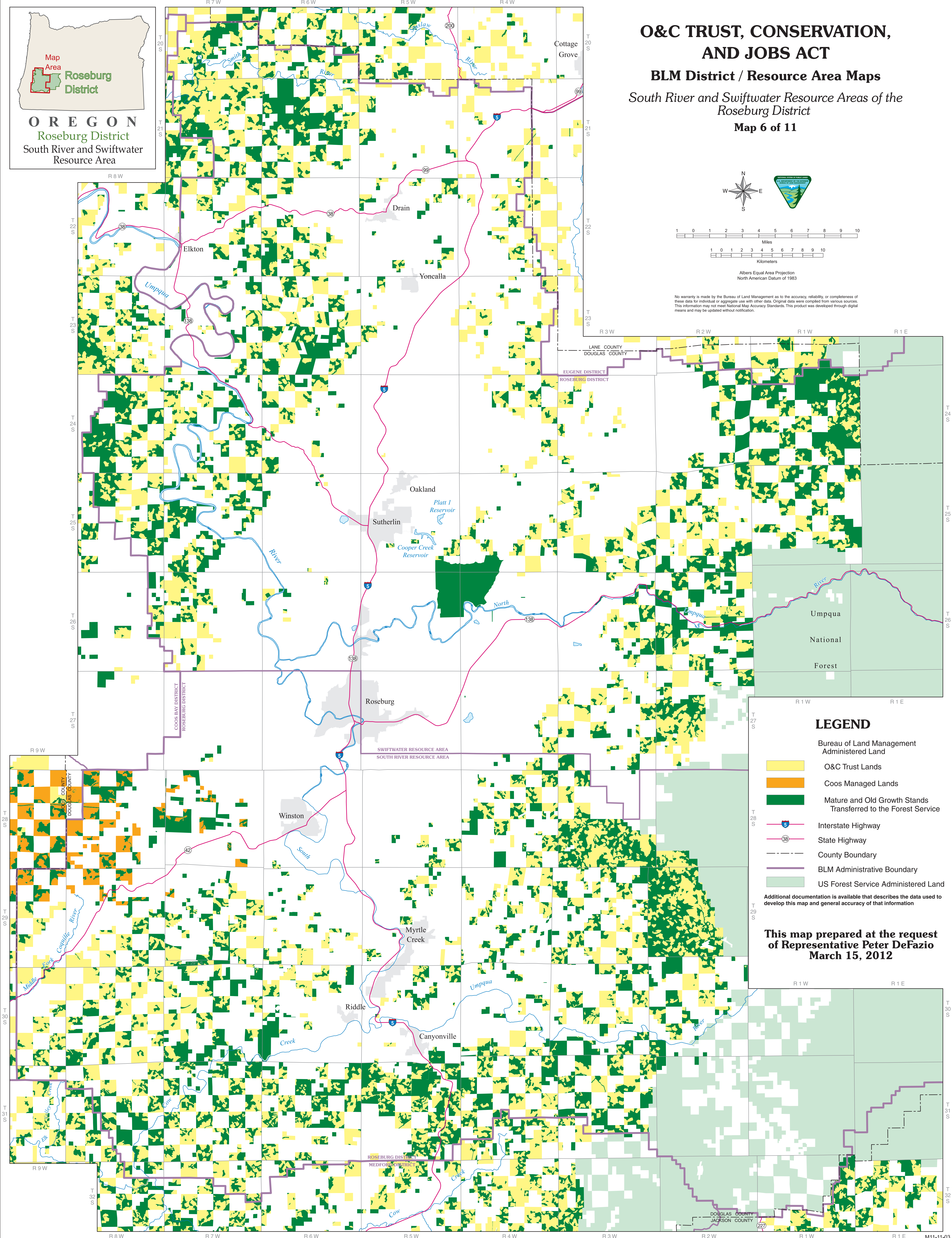
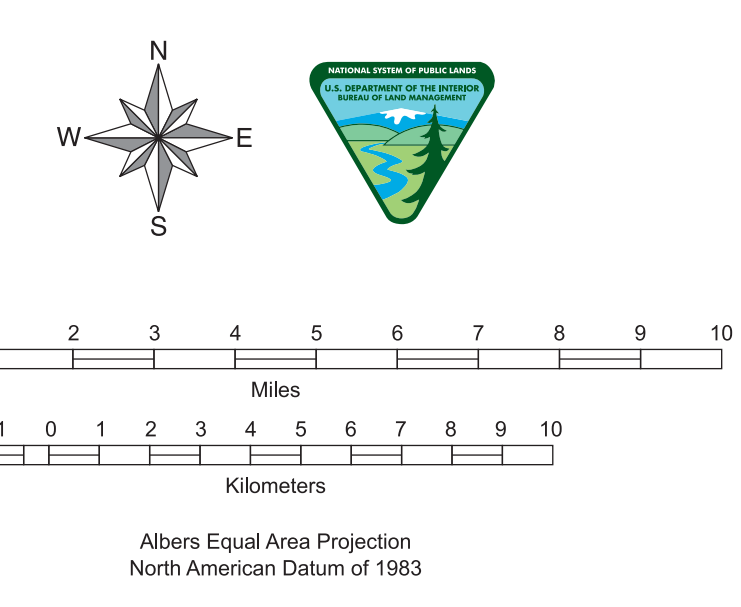


O&C TRUST, CONSERVATION, AND JOBS ACT

BLM District / Resource Area Maps

South River and Swiftwater Resource Areas of the Roseburg District

Map 6 of 11



LEGEND

- Bureau of Land Management Administered Land
 - O&C Trust Lands
 - Coos Managed Lands
 - Mature and Old Growth Stands Transferred to the Forest Service
- Interstate Highway
- State Highway
- County Boundary
- BLM Administrative Boundary
- US Forest Service Administered Land

Additional documentation is available that describes the data used to develop this map and general accuracy of that information

**This map prepared at the request
of Representative Peter DeFazio
March 15, 2012**