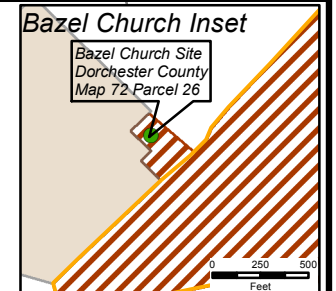
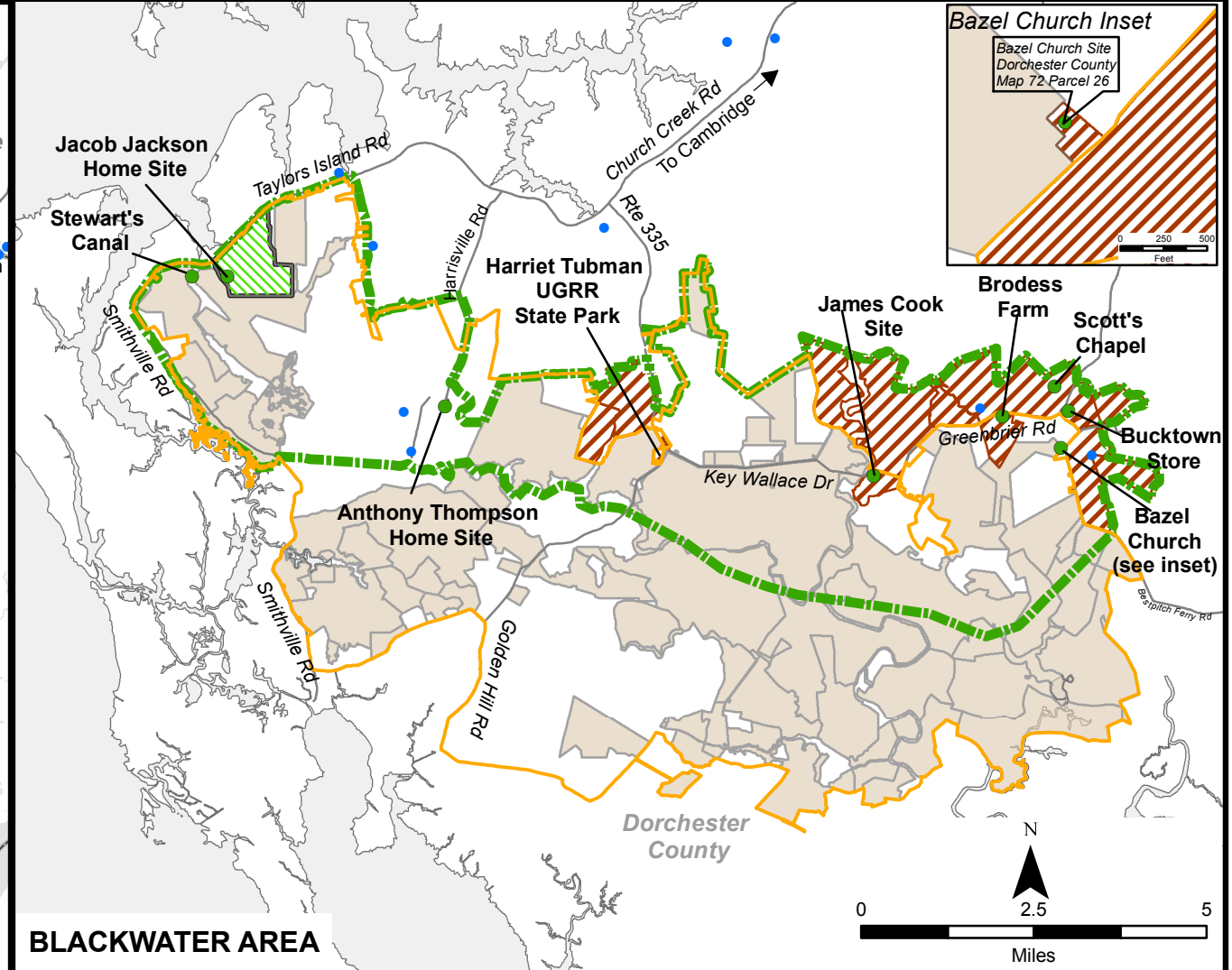
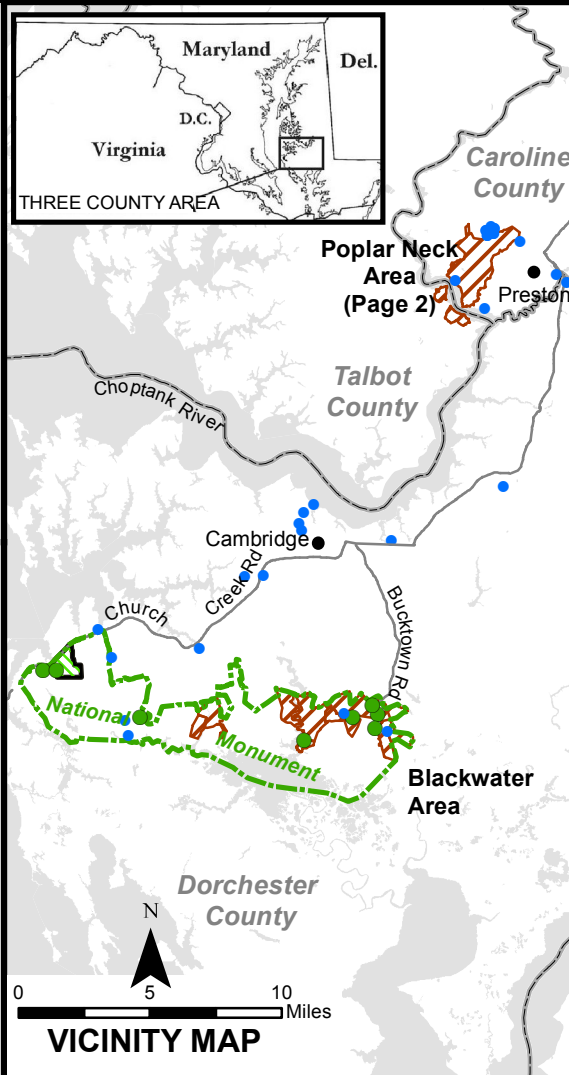


# Harriet Tubman Underground Railroad National Historical Park Proposed Boundary and Authorized Acquisition Areas

National Park Service  
U.S. Department of the Interior



Dorchester County, Maryland



- Key Tubman Historic Sites ● Other Underground Railroad Sites
- ▨ Authorized Acquisition Areas for the National Historical Park
- ▬ Harriet Tubman - Underground Railroad National Monument Boundary
- ▬ Harriet Tubman Underground Railroad National Historical Park Boundary
- Blackwater National Wildlife Refuge (USFWS Owned)
- ▬ Blackwater National Wildlife Refuge Boundary

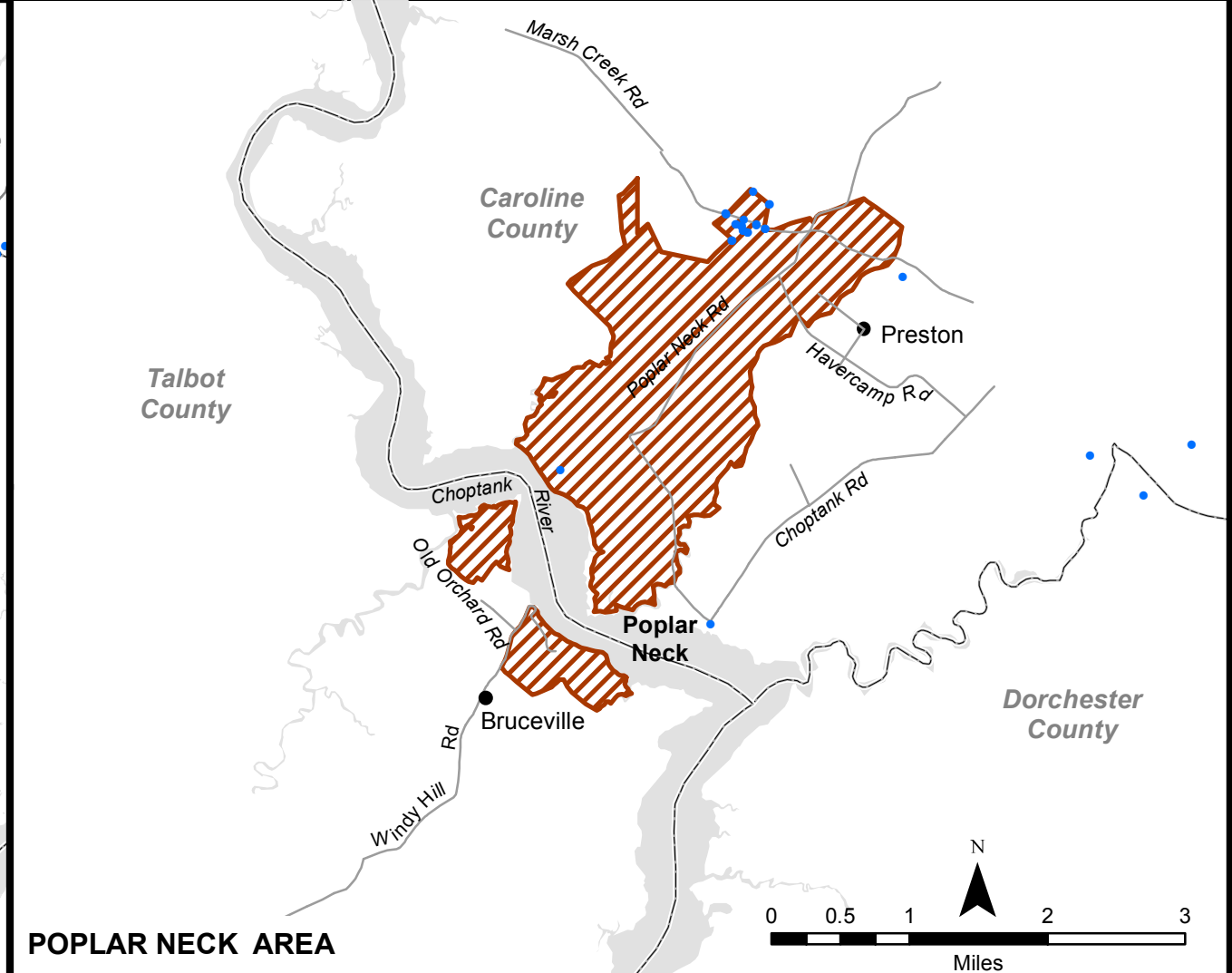
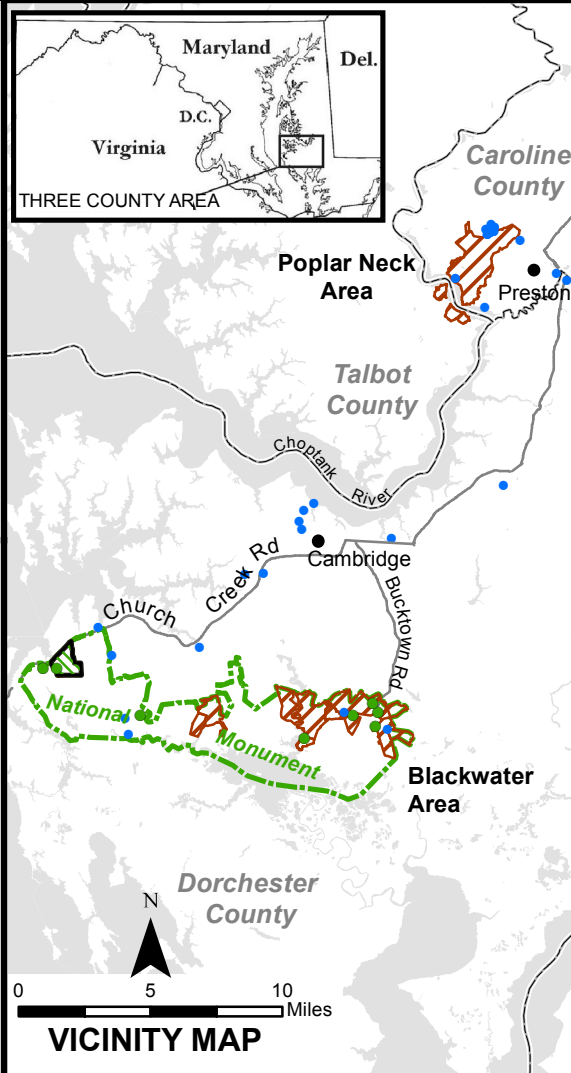
Park: HATU  
Map Number: T20/80,001A - Page 1 of 2

OFFICE: Land Resources Program Center  
REGION: Northeast Region  
DATE: March 2014

# Harriet Tubman Underground Railroad National Historical Park Proposed Boundary and Authorized Acquisition Areas

Caroline County and Talbot County, Maryland

National Park Service  
U.S. Department of the Interior



- Key Tubman Historic Sites ● Other Underground Railroad Sites
- ▨ Authorized Acquisition Areas for the National Historical Park
- ▨ Harriet Tubman - Underground Railroad National Monument Boundary
- ▨ Harriet Tubman Underground Railroad National Historical Park Boundary
- ▬ County Boundary Line

Park: HATU  
Map Number: T20/80,001A - Page 2 of 2

OFFICE: Land Resources Program Center  
REGION: Northeast Region  
DATE: March 2014