

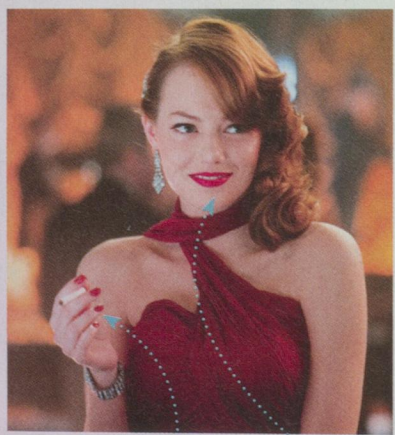
WARDROBE NOTES

EMMA STONE AND RYAN GOSLING

AS GRACE AND JERRY IN **GANGSTER SQUAD**

"Who's the tomato?" Sgt. Jerry Wooters asks when first laying eyes on Grace Faraday in this stylish 1940s crime drama, out Jan. 11. Costume designer Mary Zophres and makeup artist Christien Tinsley explain how they transformed Stone into a bombshell—and what Gosling had on under those dapper double-breasted suits. —SOLVEJ SCHOU

GET HER LOOK



NAILS
Tinsley used Chanel's high-gloss Dragon shade to polish Stone's tips.



LIPS
Stone's cupid-bow pout was created with Julie Hewett's Gem Noir.

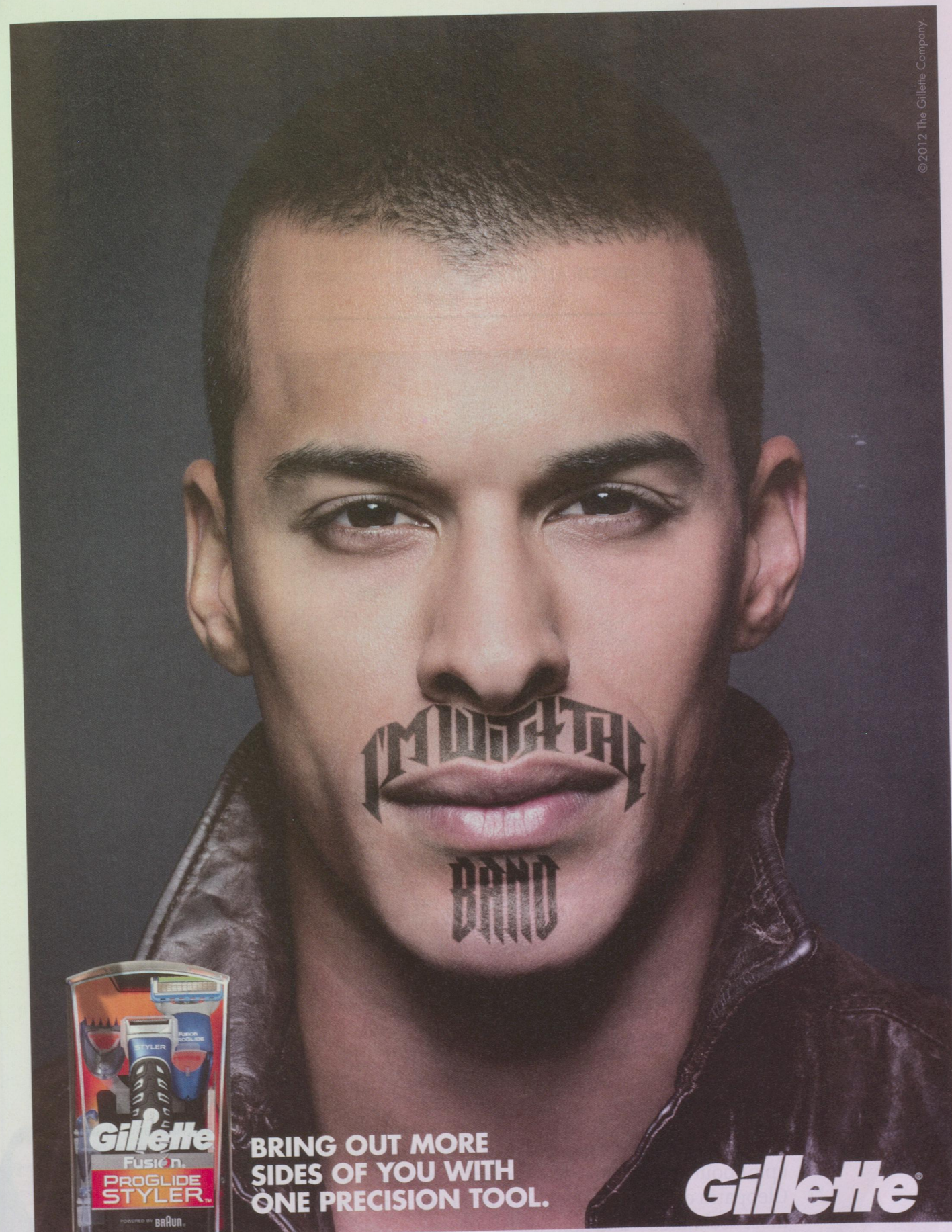


RED FROM HEAD TO TOE

Stone set the tone for her character's Rita Hayworth-inspired look by coloring her hair a rich auburn. "40s makeup is known for arched eyebrows and red lips," says Tinsley. "With [Emma's] hair and the bright red lipstick against her alabaster skin, we made her fit that image." Adding curves to the actress' petite frame required a little ingenuity. "Back then women had hourglass figures. We sucked in [Emma's waist] another two inches with a corset to give her more of a bosom," says Zophres. "She has great legs—that's what inspired the slit."

GANGSTER STYLE

"Jerry is the fashion plate of the squad; he spends all of his money on clothes," says Zophres, who, in addition to designing the wardrobes for Gosling, Stone, and the rest of the lead actors, dressed around 6,000 background players in costumes pulled from Hollywood rental houses. "We custom-made Ryan's wool felt hat, and he wears [vintage] shoes from a vendor in San Francisco." Another accessory Zophres tracked down? "You can still get period boxers. Ryan and Josh [Brolin] wore them in a few scenes."



BRING OUT MORE SIDES OF YOU WITH ONE PRECISION TOOL.

Gillette

THE BEST A MAN CAN GET™

TRIM, SHAVE, EDGE



© 2012 The Gillette Company