

SoundBites

"I was incredible at naming drinks at the Snake-hole Lounge because I care a great deal about signature beverages. The Beeryoncé Knowles—just a regular beer, but we put it in a sexy-ass mug. It pairs nicely with the Jay-Zima—we bought a bunch of Zima when the factory shut down."

—Tom (Aziz Ansari) on *Parks and Recreation*

"Phil, do we really have to go through this again? I told you I would do everything possible to make sure that your skeleton ends up in a science class at a women's college."

—Claire (Julie Bowen), to Phil (Ty Burrell), on *Modern Family*

"I'll tell you the best thing about dating a stripper... Getting to say, 'Hey, I'm dating a stripper.'"

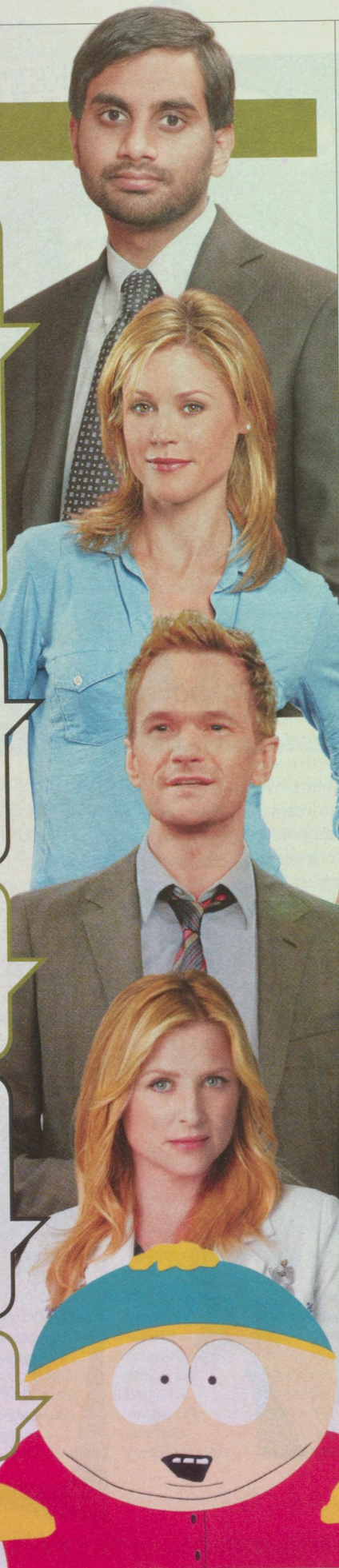
—Barney (Neil Patrick Harris) on *How I Met Your Mother*

"You're an acquired taste, like blue cheese—some people love it and some people can't stand to be in the same room as it. They think it's stinky."

—Arizona (Jessica Capshaw), to Alex (Justin Chambers), on *Grey's Anatomy*

"Cold sore is what girls call it, Kenny. It's actually herpes."

—Cartman on *South Park*



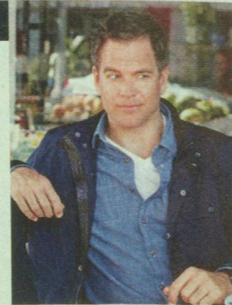
The Chart

THE RATINGS

1

NCIS

In the chart-topping April 10 episode, Tony (Michael Weatherly) and Ziva (Cote de Pablo) searched for a missing Navy chaplain in Colombia.



THE TOP 25

		VIEWERS*	LAST WEEK
1	NCIS CBS, Tuesday, 8 p.m.	17.7	12
2	AMERICAN IDOL Fox, Wednesday, 8 p.m.	16.8	2
3	DANCING WITH THE STARS ABC, Monday, 8 p.m.	16.4	3
4	AMERICAN IDOL Fox, Thursday, 8 p.m.	15.8	5
5	DANCING WITH THE STARS ABC, Tuesday, 9 p.m.	13.4	4
6	NCIS: LOS ANGELES CBS, Tuesday, 9 p.m.	12.9	21
7	CRIMINAL MINDS CBS, Wednesday, 9 p.m.	11.8	13
8	60 MINUTES CBS, Sunday, 7 p.m.	11.0	—
9	THE VOICE NBC, Monday, 8 p.m.	10.5	15
10	TWO AND A HALF MEN CBS, Monday, 9 p.m.	10.4	—
	MODERN FAMILY ABC, Wednesday, 9 p.m.	10.4	47
12	HAWAII FIVE-0 CBS, Monday, 10 p.m.	10.3	—
13	THE BIG BANG THEORY (R) CBS, Thursday, 9 p.m.	10.2	—
	THE GOOD WIFE CBS, Sunday, 9 p.m.	10.2	—
15	BODY OF PROOF ABC, Tuesday, 10:01 p.m.	10.0	16
16	CSI CBS, Wednesday, 10 p.m.	9.9	9
	SURVIVOR: ONE WORLD CBS, Wednesday, 8 p.m.	9.9	17
18	THE BIG BANG THEORY (R) CBS, Thursday, 8 p.m.	9.7	7
19	MIKE & MOLLY CBS, Monday, 9:31 p.m.	9.6	—
20	UNFORGETTABLE CBS, Tuesday, 10 p.m.	9.4	34
21	THE AMAZING RACE CBS, Sunday, 8 p.m.	9.1	—
22	THE VOICE NBC, Tuesday, 9 p.m.	9.0	23
23	NYC 22 CBS, Sunday, 10 p.m.	8.9	—
24	GREY'S ANATOMY ABC, Thursday, 9 p.m.	8.8	25
	2 BROKE GIRLS CBS, Monday, 8:30 p.m.	8.8	—

SOURCE: Nielsen, week of April 9-15, 2012 *In millions

EW MORE ON EW.COM Find fresh recaps of *New Girl*, *Revenge*, *Game of Thrones*, *The Vampire Diaries*, *Community*, and more every week on EW.com

What to Watch

A DAY-TO-DAY GUIDE TO NOTABLE PROGRAMS*

By Jessica Shaw

MON APRIL 30

MUST WATCH OF THE WEEK



Jon Cryer and Kathy Bates

Two and a Half Men

MONDAY, APRIL 30 | 9-9:30PM | CBS HD

Sorry, *Two and a Half Men* fans, the lower world will glaciare before creator Chuck Lorre ever allows Charlie Sheen back in the beach house. But that doesn't mean the (not so) dearly departed can't come back for a visit from hell. Enter Kathy Bates, donning a signature two-tone bowling shirt to play the ghost of Charlie Harper. After Alan (Jon Cryer) suffers a near-death experience, the apparition materializes at the

hospital and, tipping off its true identity, makes a characteristic reference to boobs. "The idea of Kathy playing the ghost of Charlie struck us as both strange and funny," says Lorre. "With an emphasis on the funny." While nothing would beat an unexpected cameo by the warlock assassin himself, Bates is terrific as a bad-boy stand-in. Maybe *Men* doesn't need another year of Ashton Kutcher after all! —Lynette Rice

8-9PM

Gossip Girl

The CW, TV-14-LS HD

Dan is offered a prestigious internship in Rome. "Pleeeeeease can he take it?" begs Penn Badgley.

SERIES DEBUT

9-11PM

The Pitch

AMC, TV-PG-DL HD

The pitch for new reality series *The Pitch* goes like this: Each week two different ad agencies duke it out over a piece of plum business, crafting strategies for clients like Subway and garbage behemoth Waste Management. Part of what makes the show fun is the egos, of course—ad execs are an intense, hypercompetitive bunch. But *The Pitch* is also an absorbing look at the frustrations and satisfactions of the creative process itself. It's actually a thrill to watch these guys come up with a great tagline.

B+ —Rob Brunner

10-11PM

Smash

NBC, TV-14 HD

Much to Ivy's dismay, Derek seems to be very into Rebecca (guest star Uma Thurman). How surprising that a guy so fond of the casting couch wouldn't remain faithful.

SERIES DEBUT

10:30-11PM

Money From Strangers

MTV, TV-14-DL

Host Jeff Dye, aided by a couple of no-name comedians, instructs volunteers to do asinine things in public for cash. If you think making someone say, "Cleanup, aisle 69. Get it?" in a grocery store is downright hilarious, this show's for you. C-