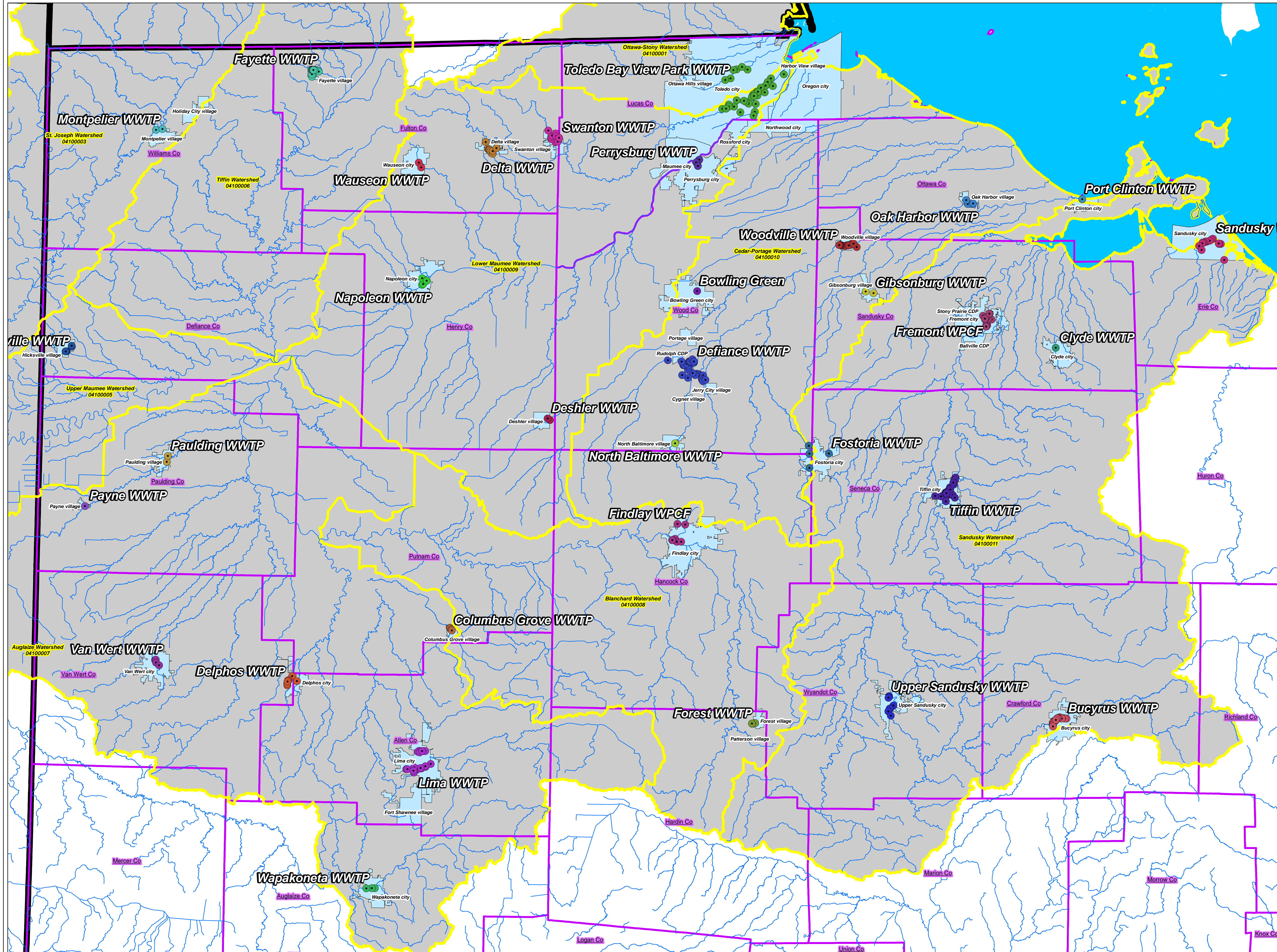


# Permitted CSOs in the Western Lake Erie Basin Region



**CSO Permit Stations**

- Bowling Green (1 Station)
- Bucyrus WWTP (22 Stations)
- Clyde WWTP (1 Station)
- Columbus Grove WWTP (4 Stations)
- Defiance WWTP (34 Stations)
- Delphos WWTP (7 Stations)
- Delta WWTP (9 Stations)
- Deshler WWTP (2 Stations)
- Fayette WWTP (17 Stations)
- Findlay WPCF (21 Stations)
- Forest WWTP (3 Stations)
- Fostoria WWTP (4 Stations)
- Fremont WPCF (15 Stations)
- Gibsonburg WWTP (2 Stations)
- Hicksville WWTP (6 Stations)
- Lima WWTP (20 Stations)
- Montpelier WWTP (2 Stations)
- Napoleon WWTP (5 Stations)
- North Baltimore WWTP (1 Station)
- Oak Harbor WWTP (3 Stations)
- Paulding WWTP (2 Stations)
- Payne WWTP (1 Station)
- Perrysburg WWTP (4 Stations)
- Port Clinton WWTP (1 Station)
- Sandusky WPC (14 Stations)
- Swanton WWTP (9 Stations)
- Tiffin WWTP (31 Stations)
- Toledo Bay View Park WWTP (34 Stations)
- Upper Sandusky WWTP (8 Stations)
- Van Wert WWTP (4 Stations)
- Wapakoneta WWTP (3 Stations)
- Wauseon WWTP (2 Stations)
- Woodville WWTP (17 Stations)

— Named Rivers & Streams

▭ HUC 08 Watershed Boundaries

▭ County Boundaries

▭ City Areas Within 2 Miles of CSO

▭ State Boundaries

▭ Western Lake Erie Watersheds

▭ Lake\_Erie