

WORKPLAN UPDATE

0900 20 MAY 2011

DANNY PAGAN ROSA

LARRY EVANS

Exemption (b)(6)

1. SEE NOTES.
2. LARRY EVANS PROVIDED HANDOUTS AS FOLLOWS.
  - a. ADDITIONAL INFO ON HDD (ATTACHED MFR)
  - b. CONCEPTUAL MITIGATION PLAN
  - c. DRAWING ILLUSTRATING ALTERNATE ALIGNMENTS ~~OF~~ ACROSS NIGHTJAR HABITAT.
  - d. 1997 REPORT ~~BY~~ ON MARINE TURTLES AND GOOGLE EARTH IMAGE OF TURTLE NESTING
  - e. ADVANCE COPY OF YOB PACKAGE. (ATTACHED MFR)

Lvl1	Lvl2	Lvl3	Lvl4	Description	Who	Notes
<b>Section 106 NHPA</b>						
				Phase 1A Historic literature research se	PREPA	Provided
				Sites of concern from Phase 1A		
				Corps develop recommendation	Corps	drafting SOW Pasa del Indio, El Platanje
				Survey sites to find boundary	PREPA	[and warehouse. PREPA met w/ SHPO, decided
				Move alignment or mitigation plan	PREPA	[to do borings next week, will send plan to Corps
				If mitigation plan: MOU	All	
				MOA if site found during construction		PREPA & SHPO drafting similar to last pipeline
<b>Phase 1B survey report</b>						
				Spanish version	PREPA	Provided.
				Technical assistance w/ Shpo	SHPO	They are reviewing. PREPA meet next week
				English version	PREPA	Sent to individual to contract, ETA 27 MAY
				Adequacy of surveys	Corps	to be determined w/SHPO coordination & site visits
				Sites of concern from Phase 1B		
				Corps develop recommendation	Corps	pending report review
				Survey sites to find boundary	PREPA	[PREPA to provide letters provided all avail info
				Move alignment or mitigation plan	PREPA	[ from Instituto Puerto Rico Cultural
				If mitigation plan: MOU	All	[ from various municipalities' archeologists
<b>Section 7 ESA FWS</b>						
<b>Biological Assessment</b>						
				Applicant's draft	PREPA	Provided.
				Technical Assistance w/ FWS	FWS	FWS providing detailed letter.
				Completeness and alternatives	Corps	Corps will send letter + FWS notes.
				Align with PR-10 out of mitigation area in State Forest		
				Plant conservation recommendation		
				2 Alts around Nightjar habitat		Alt adds wetlands but less "other enviro effect"
				<more>		Manati Karst Area now boring
				Meeting w/ FWS	FWS	Next mtg FWS 2 June. PREPA to decide if want
				Applicant's revision	PREPA	[25:May visit for Alt#2 with FWS.
				Initiate Consultation	Corps	
				Biological Opinion	FWS	
<b>Section 7 ESA NMFS</b>						
<b>Biological Assessment</b>						
				Applicant's draft	PREPA	Provided
				Completeness	Corps	
				More info on Levitown (lighting night operations, runoff to corals)		
				Erosion / work pads		PREPA provided info on core borings and HDD.
				Fracout		Corps review this and submittals on fracout and
						[erosion control plan.
						PREPA provided DNR 1997 info on turtle nexsting
						[and will convey their comments on suitability. Site
						[visit 25 May.
<b>EFH NMFS</b>						
<b>EFH BA</b>						
				Applicant's draft	PREPA	Provided
				Completeness	Corps	
				More info on Levitown (how affect water column)		
				Erosion / work pads		PREPA will provide more info as needed.
				Fracout		[Corps obtain tech assist / make determination

Lvl1	Lvl2	Lvl3	Lvl4	Description	Who	Notes
				Wetland mapping/id		
				Qualification of impacts	Joing	
				Functional Assess Index		L. Evans provided white paper 13 May on protocol,
				Identification of polygons		[w/ Jorge Coll (JD, worked on Carribean Manual)
				Reference sites		[& Ken Kerachi(sp?) for assess. Agree simple
				Interagency field work		[index and hi-med-lo reference. Corps plans to
						[involve whole office in team site visits.
						L. Evans provided conceptual mitig plan 20 May.
						Corps to identify sites and schedule.
				Identification of mitigation		
				Applicant Revised Plan	PREPA	PREPA will confirm post-construction maintained
				Corps completeness review	Corps	[ROW in wetlands will be not be mowed.
JD						
				Submit JD package	PREPA	says already provided 15 April.
				Spot verifies	Corps	Intend do concurrent with teams for assessment.
				Readjust line as needed	PREPA	[spot check a few locations, FWS interested but
				Readjust impacts (for above)	PREPA	[Corps call.
				Preliminary JDs	Corps	
				Approved JDs	n.a.	Affirmed will be preliminaries.
				Cumulative Impact Analysis		
				Define scope of analysis	Corps	
				Land cover/land use mapping		
				Public Interest - Safety		
				Letter stating meets standards	PHMSA	Populated areas 300' easement to protect pipe
				Why 150' vs 50' vs 0'	PREPA	PREPA will provide study by Mark Stephens of
						[accidents vs fatalities vs distance used to inform
						[setback.
				Federal Projects		
				Barceloneta (how close levee)		
				Rio la Plata		
				Rio Grande Arecibo (channel)		
				Hondo (e of Levittown)		
				Letter from sponsor	PREPA	Advance package provided 20 May
				Internal Corps coordination	Corps	Will initiate review Monday.
				Other federal lands		
				Contacted entities	Corps	██████████ will look for letter from RE on concerns
				Corps Real Estate	Corps	Any RE action for construction or maint ROW?
				Decision for Public Hearing		
				Review tapes	Corps	PREPA preparing summary of comments
				Description protocol for hearings	PREPA	Is preparing.
				Decision	Corps	PREPA preparing summary of comments sent to
						[Corps and how comments addressed in DIA and
				Decision Document		[also will annotate if individual commented on DIA
				Draft MFR	██████████	Starting to write. L. Evans offered to contribute: no.
				404q process w/ FWS	Corps	
				Coordinate Draft EA with FHWA	FHWA	
				Coordinate Draft EA with PHMSA	PHMSA	Corps contact PHMSA; they in town 6 June for
						[presentation at Engineering College.
						[They are reviewing design documents.
						[After construction will be Public Service Comm
						[see chapter 8 of DIA

② 3 page MOU w/ PREPA & SHPO, SIMILAR TO LAST PIPELINE WITH LIST ADDITIONAL PROCESS IF FIND NEW SITES.

Lvl1	Lvl2	Lvl3	Lvl4	Description	Who	Notes
Section 106 NHPA						
				Phase 1A Historic literature research se	PREPA	Provided
				Sites of concern from Phase 1A		
				Corps develop recommendation	Corps	Next week for Pasá del Indio and El Platanje <i>Exemption (b)(6) drafted soon</i>
				Survey sites to find boundary	PREPA	
				Move alignment or mitigation plan	PREPA	<i>① I met w/ SHPO on TUE, we decided to do ROWS SE CORNER TO ADDRESS - START NEXT WEEK</i>
				If mitigation plan: MOU	All	<i>done end of NEXT WEEK. Will send PREPA acknowledgment with prep work plan. to CORPS → MONDAY</i>
				Phase 1B survey report		
				Spanish version	PREPA	Provided.
				Technical assistance w/ Shpo	SHPO	They are reviewing. PREPA meet next week
				English version	PREPA	Sent to individual to contract, will provide ETA <i>MAY 27<sup>TH</sup></i>
				Adequacy of surveys	Corps	to be determined w/SHPO coordination & site visits
				Sites of concern from Phase 1B		
				Corps develop recommendation	Corps	pending report review
				Survey sites to find boundary	PREPA	[PREPA to provide letters provided all avail info
				Move alignment or mitigation plan	PREPA	[ from Instituto Puerto Rico Cultural
				If mitigation plan: MOU	All	[ from various municipalities' archeologists
Section 7 ESA FWS						
				Biological Assessment		
				Applicant's draft	PREPA	Provided.
				Technical Assistance w/ FWS	FWS	FWS providing detailed letter.
				Completeness and alternatives	Corps	Corps will send letter + FWS notes.
				Align with PR-10 out of mitigation area in State Forest		
				Plant conservation recommendation		
				2 Alts around Nightjar habitat		Alt adds wetlands but less "other enviro effect"
				<more>		Manati Karst Area now boring
				Meeting w/ FWS	FWS	Mtg 16May PREPA/Corps. <i>3 SITE VISITS</i>
				Applicant's revision	PREPA	<i>ALT #2</i>
				Initiate Consultation	Corps	<i>to open request not from</i>
				Biological Opinion	FWS	<i>for review</i>
Section 7 ESA NMFS						
				Biological Assessment		
				Applicant's draft	PREPA	Provided
				Completeness	Corps	<i>richly already input @ 10FT WIDE</i>
				More info on Levitown (lighting night operations, runoff to corals)		
				Erosion / work pads		PREPA provide info on core borings and HDD work
				Fracout		pads that are bermed and also turbidity screens
						PREPA provide DNR letter on turtle nesting (none)
				EFH NMFS		<i>met w/ DNR on turtle habitat</i>
				EFH BA		<i>substantive for ROCK characteristics of terrain</i>
				Applicant's draft	PREPA	Provided <i>only if incident... considered isolated. (w.a. will be so isolated → will come to me.</i>
				Completeness	Corps	
				More info on Levitown (how affect water column)		
				Erosion / work pads		L. Evans says EFH person says has all info needed.
				Fracout		[Corps obtain tech assist / make determination
						<i>Prepa do what can be</i>
FHWA						
				ROW and Work Plan		[PREPA next week mtg to coordinate process
				CADD align & work plan to DOT	PREPA	ETA? <i>MtG had TUE 17<sup>TH</sup> CONCLUSIONS</i>
				Review	DOT	<i>to provide proposed MICHAEL TO MOU, UTILITY AGREEMENT</i>
				Review	FHWA	<i>Corps confirm long FHWA OK ROWS EA</i>
				Revised alignment	PREPA	<i>Corps only submitting call to confirm w/ Carlos Machado</i>

DRAFT (see "Note")  
CHANGES, BUT A COMPLETE SCHEDULE FOR THE PROJECT IN THESE

DRAFT (see "Note")  
call to confirm w/ Carlos Machado

Lvl1	Lvl2	Lvl3	Lvl4	Description	Who	Notes
JD						
				Submit JD package	PREPA	says already provided 15 April.
				Spot verifies	Corps	Intend do concurrent with teams for assessment.
				Readjust line as needed	PREPA	[spot check a few locations, FWS interested but
				Readjust impacts (for above)	PREPA	[Corps call. <i>get Edlyn second</i>
				Preliminary JDs	Corps	<i>with.</i>
				Approved JDs	n.a.	Affirmed will be preliminaries.
				Cumulative Impact Analysis		
				Define scope of analysis	Corps	
				Land cover/land use mapping		
				Public Interest - Safety		
				Letter stating meets standards	PHMSA	Populated areas 300' easement to protect pipe
				Why 150' vs 50' vs 0'	PREPA	PREPA will provide study by Mark Stephens of [accidents vs fatalities vs distance used to inform [setback.
				Federal Projects		
				408 for Barceloneta		
				How close to levee	PREPA	PREPA provide <i>draft</i> package for all <i>SIGNED</i> early next week. <i>GOING TO</i>
				Internal Corps coordination	Corps	[Two not listed here are Rio Grande Arecibo which <i>CHEN</i>
				408 for <del>Rio la Plata</del> <b>GRANDE DE ARECIBO</b>		
				Letter from sponsor	PREPA	[is proposed, and Hondo (e of Levittown) existing
				Internal Corps coordination	Corps	[channel. @ Plata is going under channel, not [levee as originally briefed, so may not be full 408
				Other federal lands		[review process, Corps will ask.
				Contacted entities	Corps	Bob will look for letter from RE on concerns <i>IS REAL ESTATE NEEDED FOR CONSTR ROW?</i>
				Decision for Public Hearing		<i>MAINT ROW?</i>
				Review tapes	Corps	PREPA preparing summary of comments
				Description protocol for hearings	PREPA	Is preparing.
				Decision	Corps	PREPA preparing summary of comments sent to [Corps and how comments addressed in DIA and [also will annotate if individual commented on DIA
				Decision Document		
				Draft MFR	Bob	Starting to write. L.Evans offered to contribute: no.
				404q process w/ FWS	Corps	
				Coordinate Draft EA with FHWA	FHWA	<i>they are review design documents.</i>
				Coordinate Draft EA with PHMSA	PHMSA	Corps contact PHMSA, they in town 6 June for
				Publish Draft EA	Corps	[presentation at Engineering College. - <i>Pulido</i>
				CZM	PREPA	Provided (?) <i>Summary</i>
				WQC	PREPA	<i>delegated with B</i> <i>to manager</i> <i>CHART 8</i>
<p>"Note": This work plan and its notes are based on the Corps's understanding of the administrative record as of the date of the work plan. The purpose of the work plan is to communicate the status of the Corps's review of the permit application. The work plan and its notes may be revised as the Corps conducts its review of the record or as new information is made available to the Corps.</p>						
<p>Point of contact: Exemption (b)(6), Regulatory Division, Jacksonville District, U.S. Army Corps of Engineers, P.O. Box 4970, Jacksonville, FL, 32232, email: Exemption (b)(6)</p>						

*wants a timetable*

Exemption (b)(6)

**From:** Exemption (b)(6) SAJ  
**Sent:** Thursday, May 19, 2011 2:25 PM  
**To:** Exemption (b)(6) SAJ; 'Daniel Pagan'; Exemption (b)(6) SAJ; 'LarryEvans@bcpeabody.com'; 'dgalandrna@gmail.com'  
**Subject:** Via Verde Fri 20 May Status Call-in Number (UNCLASSIFIED)  
**Attachments:** 20110512-1700-WorkPlan-01\_annotated.xlsx

Classification: UNCLASSIFIED  
Caveats: NONE

All, at 09:00 AM, dial (888)830-6260 , at the prompt enter PARTICIPANT CODE: 118868 , at the prompt speak your name , then you will join the conference call.

Exemption (b)(6)

Regulatory Division Exemption (b)(6)  
Please assist us in better serving you!  
Please complete the customer survey by  
clicking on the following link:  
<http://per2.nwp.usace.army.mil/survey.html>

-----Original Message-----

**From:** Exemption (b)(6) SAJ  
**Sent:** Tuesday, May 17, 2011 8:28 AM  
**To:** Daniel Pagan; Exemption (b)(6) SAJ; LarryEvans@bcpeabody.com; dgalandrna@gmail.com  
**Subject:** Via Verde Fri 20 May Status Call (UNCLASSIFIED)

Classification: UNCLASSIFIED  
Caveats: NONE

Sec. Galan and Eng. Pagán, I propose 9am telephone conference to status of items in the workplan. Please advise if another time is convenient to you. For your convenience and correction, enclosed is the workplan annotated with my notes "as of" the end of our meeting, 5pm Thu 12 May. This does not include changes subsequent to that. I'll arrange a call-in number.

Exemption (b)(6)

Regulatory Division Exemption (b)(6)  
Please assist us in better serving you!  
Please complete the customer survey by  
clicking on the following link:  
<http://per2.nwp.usace.army.mil/survey.html>

Classification: UNCLASSIFIED  
Caveats: NONE

Classification: UNCLASSIFIED  
Caveats: NONE

VÍA VERDE WETLAND AND U.S. WATERS CONCEPTUAL  
MITIGATION PLAN: CAÑO TIBURONES NATURE RESERVE (CTNR)  
ENHANCEMENT PROJECT

To compensate for wetlands and U.S. waters temporary and permanent impacts, the Vía Verde Natural Gas Project proposes to implement a comprehensive mitigation plan within the CTNR. The development of the plan will include- the following actions:

**1. Assessment of functions and values of wetlands and U.S. waters to be impacted.**

A modified Uniform Mitigation Assessment Method (modUMAM) will be used to determine the functions and values of impacted waters. A series of points along the Project route have been selected for consideration as representative sampling points for the type of wetlands or U.S. waters to be impacted. These sampling points include herbaceous and forested palustrine and estuarine systems that are located within the Project route

**2. Evaluation of potential areas for mitigation actions within the CTNR.**

A preliminary GIS based evaluation of potential areas for mitigation actions will be carried out. This evaluation will produce a map with different alternatives or actions that could be included in the mitigation plan. A preliminary map showing some of these actions is included in Attachment A.

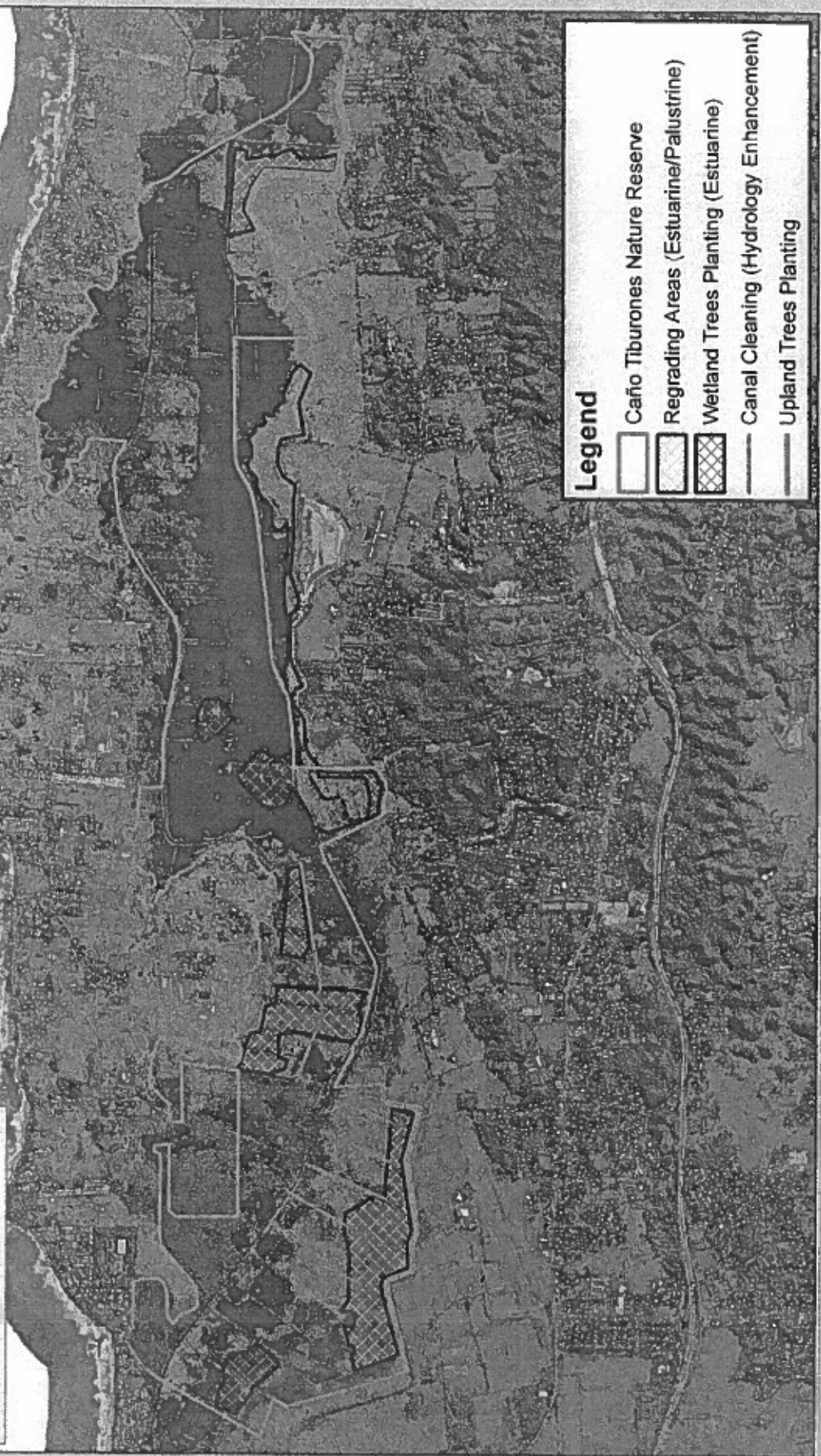
**3. Assessment of functions and values of existing wetlands and U.S. waters within the CTNR.**

A modified UMAM will be used to determine functions and values of existing wetlands and U.S. waters on the pre-selected areas (GIS based evaluation described above). This action will include a field evaluation of the sites and will document the existing conditions on the wetlands and U.S. waters before any mitigation method is performed.

# Caño Tiburones Enhancement Project



0 600 1,200 Meters



## Legend

- Caño Tiburones Nature Reserve
- Regrading Areas (Estuarine/Palustrine)
- Wetland Trees Planting (Estuarine)
- Canal Cleaning (Hydrology Enhancement)
- Upland Trees Planting



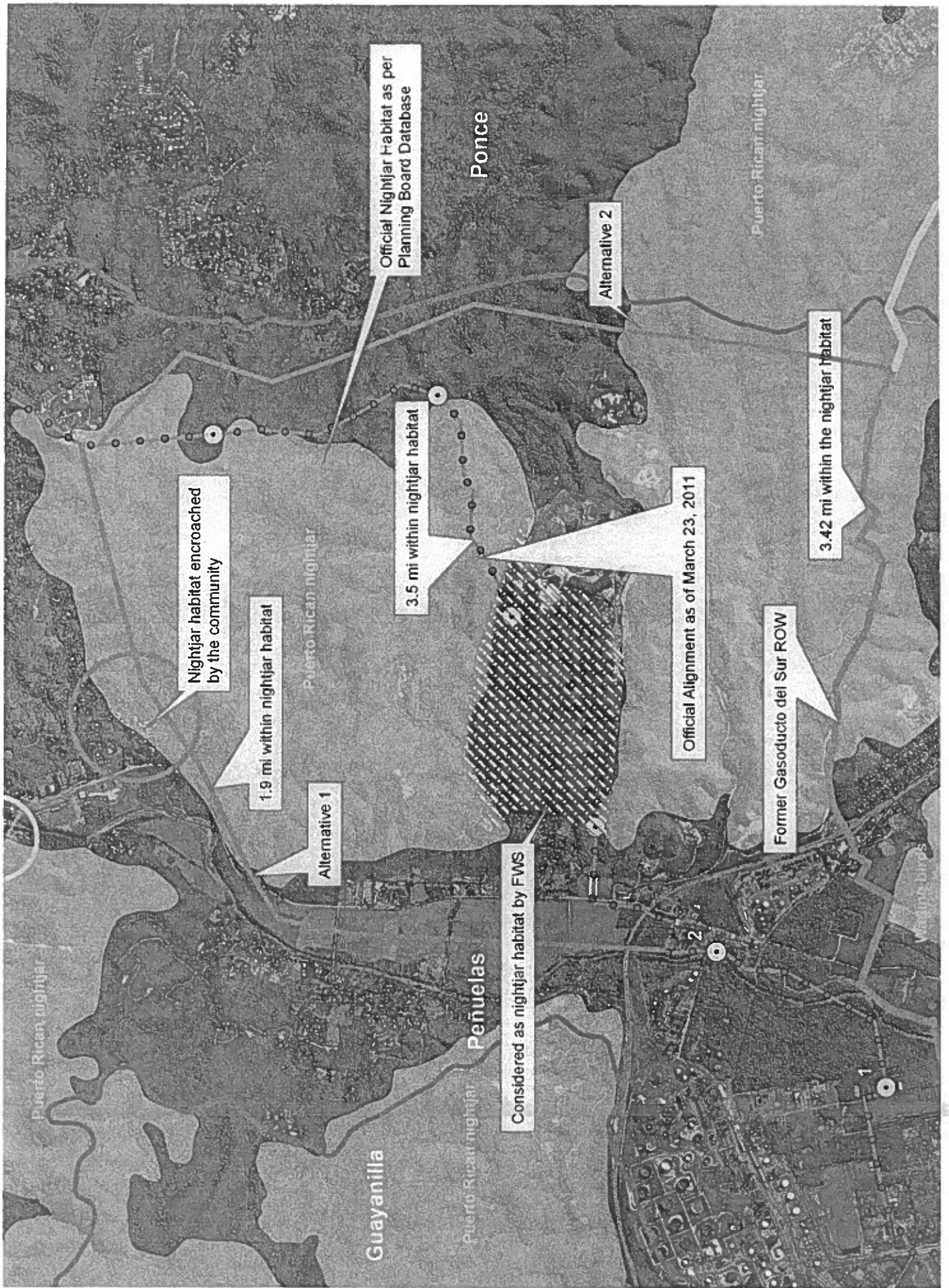
**4. Determination of gain in functions and values of wetlands and U.S. waters within the CTNR after the implementation of the proposed mitigation is completed.**

The modified UMAM will take into consideration factors such as risk; time lag; vulnerability to changes in hydrology, degraded water quality, and other impacts.

Included below are some of the actions that may be included as part of the recommended mitigation plan.

- ❖ Cleaning or re-opening of some of the historic or natural canals to help in flooding and water circulation of the land/wetlands that surrounds them.
- ❖ Creation of mangrove or other aquatic forests to complement and diversify the existing herbaceous wetlands or creation of forested areas from within existing inundated zones.
- ❖ Re-grading of transitional upland areas to increase wetland surface areas by lowering the topographic levels, with the potential to create herbaceous wetlands from uplands or to increase the frequency of inundation or hydroperiod in existing seasonal wetlands.
- ❖ Planting of a forested buffer along areas that are close to existing human activities or impacts. It may be part of a profile that includes upland - transition zone - forested wetland (or herbaceous wetland). This could be carried out on specific areas where mostly needed.

In addition, it is recommended that a Hydraulic and Hydrologic (H-H) study be implemented together with the above, aimed to determine the desired level of flooding within the CTNR, and recommending specific measures for a design. These measures may include among others: (1) the installation of hydraulic control structures, such as blocking or filling some channels, (2) re-grading to obtain lower topographic levels or to be lower than the water table, and (3) construction of dikes, etc



## INFORME DEL PROYECTO CONSERVACION TORTUGAS MARINAS AREA DORADO-PIÑONES AÑO 1997

### INTRODUCCION

Durante la temporada de 1997 se monitoreó la actividad de anidaje del tinglar (*D. Coriacea*), en las playas de Loiza, Isla Verde, Ocean Park, Punta Salinas (Toa Baja) y área Carr. 165 Dorado, playas de aproximadamente 10-12 Kms. cada una (Ver mapa). Se realizaron un total de ciento cinco (105) patrullajes nocturnos.

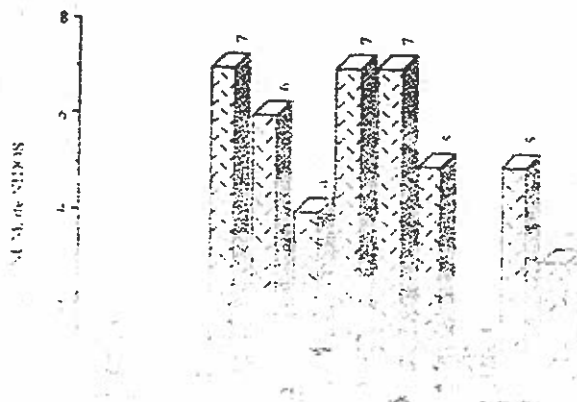
### RESULTADOS

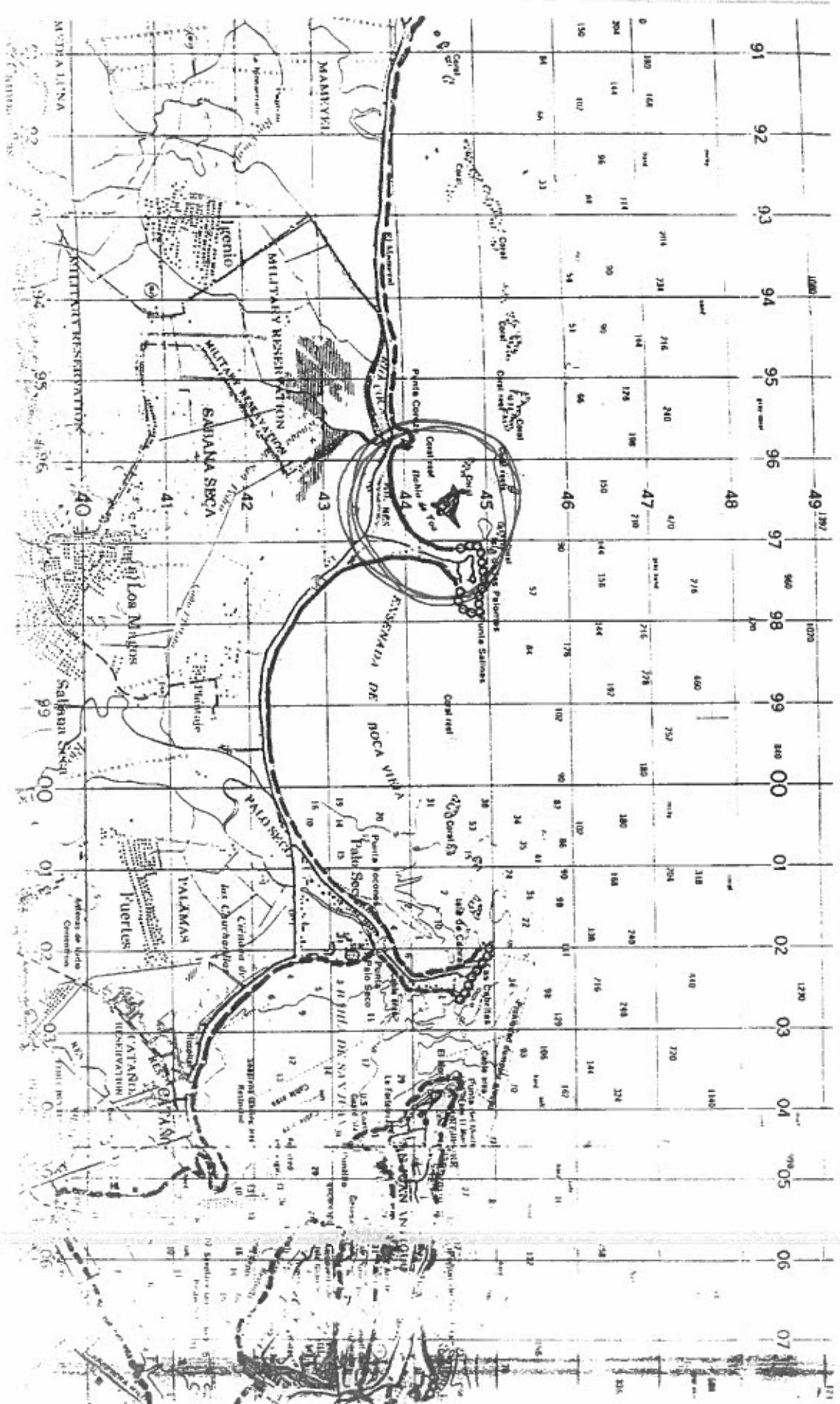
En los patrullajes nocturnos se marcaron y midieron doce (12) nuevos individuos. Una (1) remigrante anidó en Dorado. Esta fué originalmente marcada en la misma playa en el año 1995.

Se registró un total de ochenta y dos (82) nidos de tinglar desde finales de marzo hasta principios de julio de 1997. Nueve (9) nidos fueron saqueados (tres (3) en Barceloneta, uno (1) en Dorado y cinco (5) en Piñones). Todos los nidos fueron relocados en un área designada en las playas de Piñones y Dorado. Los nidos recuperados en Barceloneta se relocaron en Dorado.

El patrullaje se realizó por diecisiete (17) semanas. El mes de mayor actividad en ambas playas fué mayo (Figura 1 y 2). Se liberaron un total de 677 neonatos. El éxito reproductivo fué estimado en un 62.50 % en Piñones y 75.19 % en Dorado.

FIGURA 1. NUMERO DE NIDOS DE TINGLAR (*D. coriacea*) POR SEMANA EN EL AREA DE PIÑONES, 1997







Imagery Date: Apr 7, 2009

18°26'51.64"N 66°09'49.13"W elev 3 ft

Data SIO, NOAA, U.S. Navy, NGA, GEBCO  
Imagery © 2011 TerraMetrics  
Image © 2011 GeoEye

Google  
Eye alt 32715.4



Google

Date SIO, NOAA, U.S. Navy, NSA, GEBCO  
Image © 2011 TerraMetrics  
Images © 2011 Google

18°26'51.64" N 65°05'49.13" W elev. 3 ft

Eye alt. 32715 ft

Images Date: Jun 7, 2009