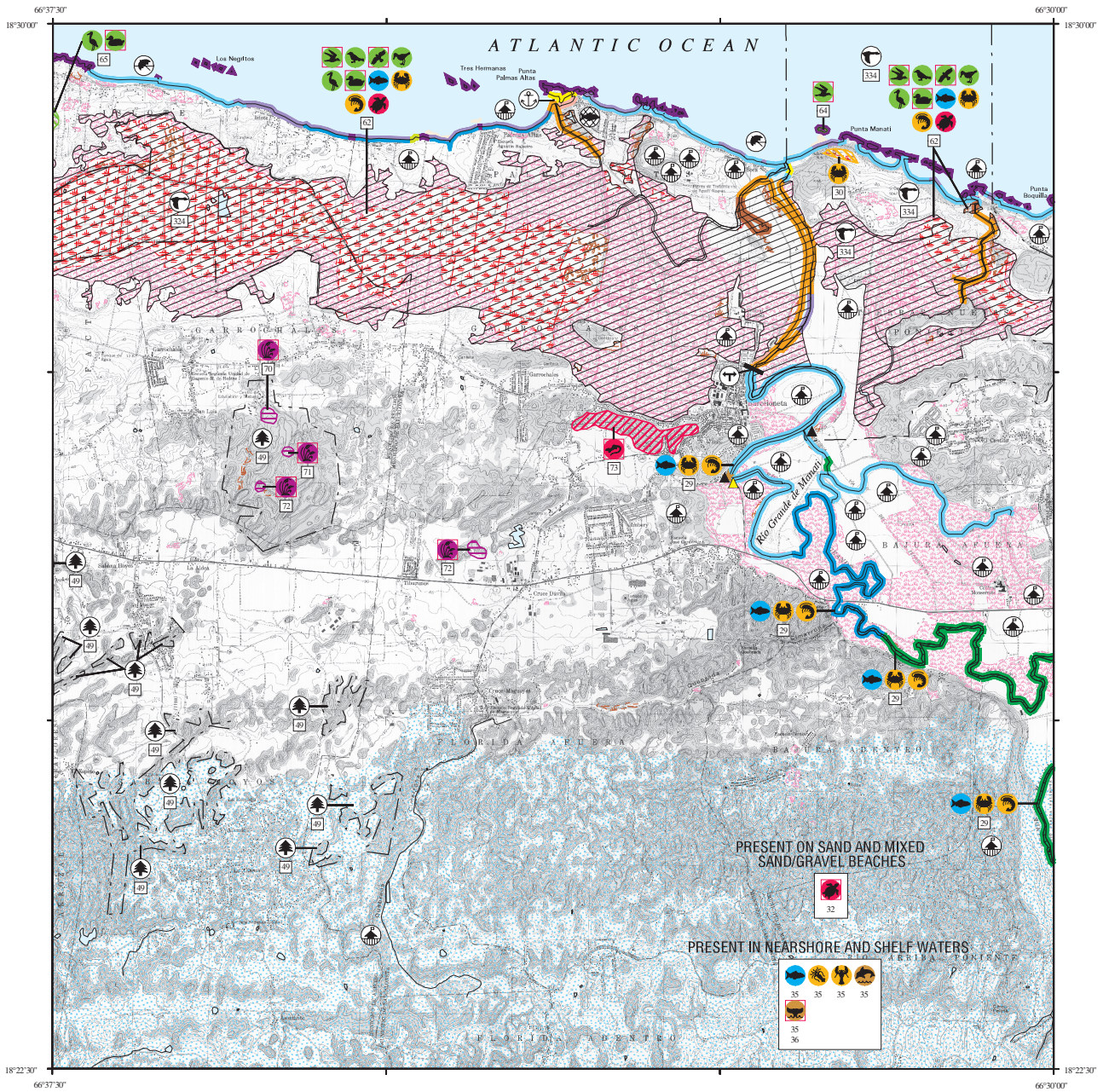
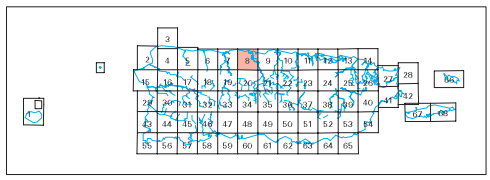


ENVIRONMENTAL SENSITIVITY INDEX MAP

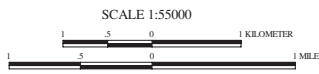


- SHORELINE HABITATS (ESI)**
- 1A EXPOSED ROCKY CLIFFS
 - 1B EXPOSED, SOLID MAN-MADE STRUCTURES
 - 2A EXPOSED WAVE-CUT PLATFORMS IN BEDROCK
 - 2B SCARPS AND STEEP SLOPES IN MUDDY SEDIMENTS
 - 3A FINE- TO MEDIUM-GRAINED SAND BEACHES
 - 4 COARSE-GRAINED SAND BEACHES
 - 5 MIXED SAND AND GRAVEL BEACHES
 - 6A GRAVEL BEACHES
 - 6B RIPRAP
 - 7 EXPOSED TIDAL FLATS
 - 8A SHELTERED ROCKY SHORES
 - 8B SHELTERED, SOLID MAN-MADE STRUCTURES
 - 9A SHELTERED TIDAL FLATS
 - 9B SHELTERED VEGETATED LOW BANKS
 - 10D MANGROVES
 - SALT- AND BRACKISH-WATER MARSHES
 - FRESHWATER MARSHES
 - FRESHWATER SWAMPS
 - FRESHWATER SCRUB/SHRUB

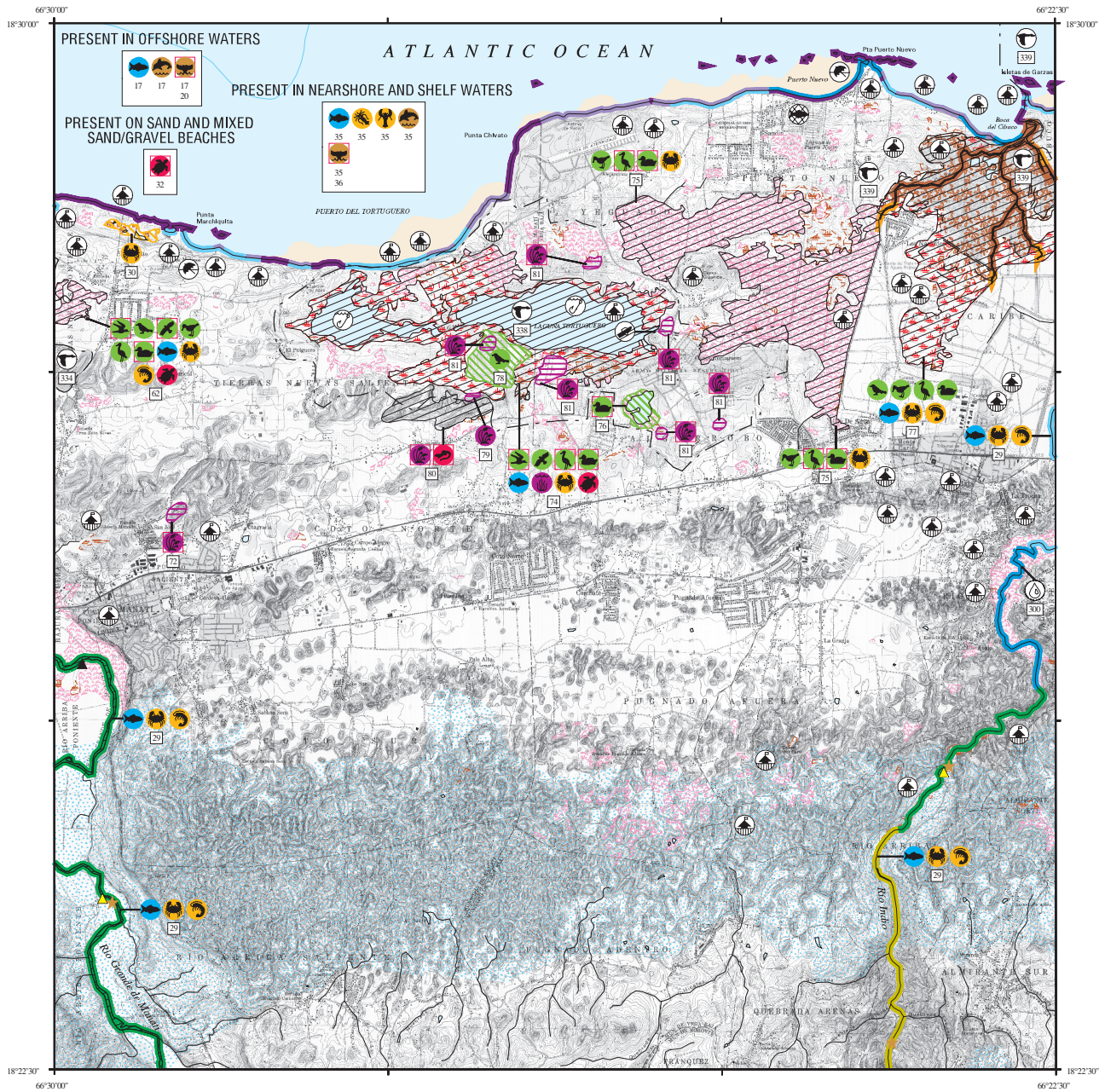
- STREAM REACHES (RSI)**
- 1 QUIET POOL: LOW-SENSITIVE BANKS
 - 2 STRAIGHT CHANNEL WITH CURRENTS, LOW-SENSITIVE BANKS (MUD DOMINANT)
 - 3 MEANDERING CHANNEL: SAND POINT BARS
 - 4 MEANDERING CHANNEL: VEGETATED POINT BARS
 - 5 RAPIDS OVER BEDROCK
 - 6 MEANDERING CHANNEL: SAND AND GRAVEL POINT BARS
 - 7 SPLIT CHANNEL WITH COARSE GRAVEL: SOME RAPIDS
 - 8 SMALL FALLS, BOULDERS IN CHANNEL
 - 9 LARGE FALLS, BOULDERS IN CHANNEL
 - 10 CHANNELS WITH ASSOCIATED VULNERABLE WETLANDS
 - KARST



Not For Navigation
 Published: May 2000
 Published at Seattle, Washington
 National Oceanic and Atmospheric Administration
 National Ocean Service
 Office of Response and Restoration
 Hazardous Materials Response Division

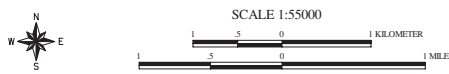
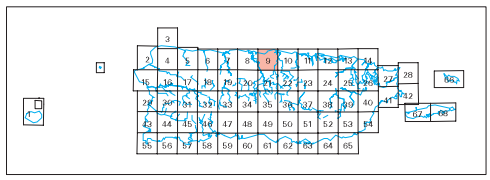


ENVIRONMENTAL SENSITIVITY INDEX MAP



- SHORELINE HABITATS (ESI)**
- 1A EXPOSED ROCKY CLIFFS
 - 1B EXPOSED, SOLID MAN-MADE STRUCTURES
 - 2A EXPOSED WAVE-CUT PLATFORMS IN BEDROCK
 - 2B SCARPS AND STEEP SLOPES IN MUDDY SEDIMENTS
 - 3A FINE- TO MEDIUM-GRAINED SAND BEACHES
 - 4 COARSE-GRAINED SAND BEACHES
 - 5 MIXED SAND AND GRAVEL BEACHES
 - 6A GRAVEL BEACHES
 - 6B RIPRAP
 - 7 EXPOSED TIDAL FLATS
 - 8A SHELTERED ROCKY SHORES
 - 8B SHELTERED, SOLID MAN-MADE STRUCTURES
 - 9A SHELTERED TIDAL FLATS
 - 9B SHELTERED VEGETATED LOW BANKS
 - 10D MANGROVES
 - SALT- AND BRACKISH-WATER MARSHES
 - FRESHWATER MARSHES
 - FRESHWATER SWAMPS
 - FRESHWATER SCRUB/SHRUB

- STREAM REACHES (RSI)**
- 1 QUIET POOL: LOW-SENSITIVE BANKS
 - 2 STRAIGHT CHANNEL WITH CURRENTS, LOW-SENSITIVE BANKS (MED. DOMINANT)
 - 3 MEANDERING CHANNEL: SAND POINT BARS
 - 4 MEANDERING CHANNEL: VEGETATED POINT BARS
 - 5 RAPIDS OVER BEDROCK
 - 6 MEANDERING CHANNEL: SAND AND GRAVEL POINT BARS
 - 7 SPLIT CHANNEL WITH COARSE GRAVEL: SOME RAPIDS
 - 8 SMALL FALLS, BOULDERS IN CHANNEL
 - 9 LARGE FALLS, BOULDERS IN CHANNEL
 - 10 CHANNELS WITH ASSOCIATED VULNERABLE WETLANDS
 - KARST



Not For Navigation
Published: May 2000
Published at Seattle, Washington
National Oceanic and Atmospheric Administration
National Ocean Service
Office of Response and Restoration
Hazardous Materials Response Division

PUERTO RICO - ESIMAP 9 cont.

BIOLOGICAL RESOURCES: cont.

REPTILE:

RAR#	Species	S/F T/E Conc.	J	F	M	A	M	J	J	A	S	O	N	D	Nesting	Hatching	Interesting	Juveniles	Adults
32	Green sea turtle	S/F E/T	X	X	X	X	X	X	X	X	X	X	X	X	JAN-DEC	JAN-DEC	-	JAN-DEC	JAN-DEC
	Hawksbill sea turtle	S/F E/E	X	X	X	X	X	X	X	X	X	X	X	X	JAN-DEC	JAN-DEC	-	JAN-DEC	JAN-DEC
	Leatherback sea turtle	S/F E/E		X	X	X	X	X	X						FEB-JUN	APR-SEP	-	APR-SEP	FEB-JUN
62	Jicotea		X	X	X	X	X	X	X	X	X	X	X	X	APR-JUL	JUN-OCT	-	JAN-DEC	JAN-DEC
74	Jicotea		X	X	X	X	X	X	X	X	X	X	X	X	APR-JUL	JUN-OCT	-	JAN-DEC	JAN-DEC
80	Puerto Rican boa	S/F E/E	X	X	X	X	X	X	X	X	X	X	X	X	-	-	-	JAN-DEC	JAN-DEC

HUMAN USE RESOURCES:

WATER INTAKE:

HUN#	Name	Owner/Manager	Contact	Phone
300	VEGA BAJA FILTER PLANT	PRASA	PR 674, KM 1.0	787/858-2010

WILDLIFE REFUGE:

HUN#	Name	Owner/Manager	Contact	Phone
334	RESERVA NATURAL HACIENDA LA ESPERANZA	DRNA/PRCT	DIVISION DE RESERVAS NATURALES Y REFUGIOS DE VIDA SILVESTRE	787/724-2816
338	RESERVA NATURAL LAGUNA TORTUGUERO	DRNA	DIVISION DE RESERVAS NATURALES Y REFUGIOS DE VIDA SILVESTRE	787/724-2816
339	RESERVA NATURAL PANTANO CIBUCO	DRNA	DIVISION DE RESERVAS NATURALES Y REFUGIOS DE VIDA SILVESTRE	787/724-2816

Biological information shown on the maps represents known concentration areas or occurrences, but does not necessarily represent the full distribution or range of each species. This is particularly important to recognize when considering potential impacts to protected species.