

**Transmission of material in this release is embargoed until 8:30 a.m. (EST) Friday, December 7, 2012**

USDL-12-2366

Technical information:

Household data: (202) 691-6378 • cpsinfo@bls.gov • www.bls.gov/cps

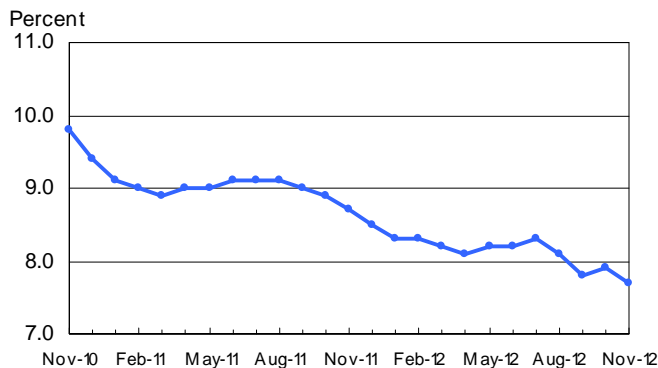
Establishment data: (202) 691-6555 • cesinfo@bls.gov • www.bls.gov/ces

Media contact: (202) 691-5902 • PressOffice@bls.gov

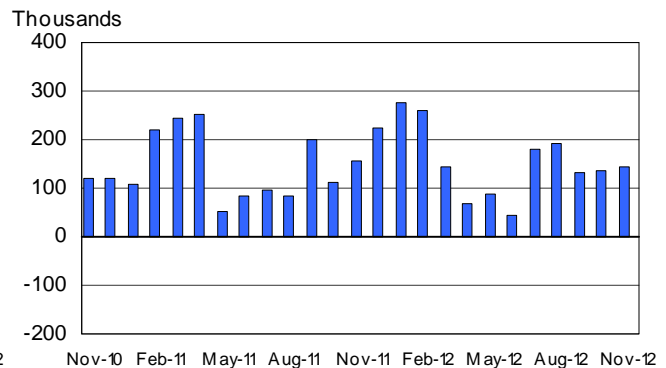
**THE EMPLOYMENT SITUATION — NOVEMBER 2012**

Total **nonfarm payroll employment** rose by 146,000 in November, and the **unemployment rate** edged down to 7.7 percent, the U.S. Bureau of Labor Statistics reported today. Employment increased in retail trade, professional and business services, and health care.

**Chart 1. Unemployment rate, seasonally adjusted, November 2010 – November 2012**



**Chart 2. Nonfarm payroll employment over-the-month change, seasonally adjusted, November 2010 – November 2012**



**Hurricane Sandy**

Hurricane Sandy made landfall on the Northeast coast on October 29<sup>th</sup>, causing severe damage in some states. Nevertheless, our survey response rates in the affected states were within normal ranges. Our analysis suggests that Hurricane Sandy did not substantively impact the national employment and unemployment estimates for November. BLS will release the regional and state estimates on December 21<sup>st</sup>. For additional information on how severe weather affects employment and unemployment data, see Question 8 in the Frequently Asked Questions section of this release.

## Household Survey Data

The **unemployment rate** edged down to 7.7 percent in November. The number of **unemployed persons**, at 12.0 million, changed little. (See table A-1.)

Among the **major worker groups**, the unemployment rates for adult men (7.2 percent), adult women (7.0 percent), teenagers (23.5 percent), whites (6.8 percent), and Hispanics (10.0 percent) showed little or no change in November. The unemployment rate for blacks (13.2 percent) declined over the month. The jobless rate for Asians was 6.4 percent (not seasonally adjusted), little changed from a year earlier. (See tables A-1, A-2, and A-3.)

The number of **long-term unemployed** (those jobless for 27 weeks or more) was little changed at 4.8 million in November. These individuals accounted for 40.1 percent of the unemployed. (See table A-12.)

The **civilian labor force participation rate** declined by 0.2 percentage point to 63.6 percent in November, offsetting an increase of the same amount in October. Total **employment** was about unchanged in November, following a combined increase of 1.3 million over the prior 2 months. The **employment-population ratio**, at 58.7 percent, changed little in November. (See table A-1.)

The number of persons employed **part time for economic reasons** (sometimes referred to as involuntary part-time workers), at 8.2 million in November, was little changed over the month. These individuals were working part time because their hours had been cut back or because they were unable to find a full-time job. (See table A-8.)

In November, 2.5 million persons were **marginally attached to the labor force**, essentially unchanged from a year earlier. (These data are not seasonally adjusted.) These individuals were not in the labor force, wanted and were available for work, and had looked for a job sometime in the prior 12 months. They were not counted as unemployed because they had not searched for work in the 4 weeks preceding the survey. (See table A-16.)

Among the marginally attached, there were 979,000 **discouraged workers** in November, little changed from a year earlier. (These data are not seasonally adjusted.) Discouraged workers are persons not currently looking for work because they believe no jobs are available for them. The remaining 1.5 million persons marginally attached to the labor force in November had not searched for work in the 4 weeks preceding the survey for reasons such as school attendance or family responsibilities. (See table A-16.)

## Establishment Survey Data

Total **nonfarm payroll employment** increased by 146,000 in November. Since the beginning of this year, employment growth has averaged 151,000 per month, about the same as the average monthly job gain of 153,000 in 2011. In November, employment rose in retail trade, professional and business services, and health care. (See table B-1.)

**Retail trade** employment rose by 53,000 in November and has increased by 140,000 over the past 3 months. Over the month, job gains occurred in clothing and clothing accessory stores (+33,000), in general merchandise stores (+10,000), and in electronics and appliance stores (+9,000). Employment in miscellaneous store retailers decreased by 13,000.

In November, employment in **professional and business services** rose by 43,000. Employment continued to increase in computer systems design and related services.

**Health care** employment continued to increase in November (+20,000), with gains in hospitals (+8,000) and in nursing care facilities (+5,000). Health care has added an average of 26,000 jobs per month this year.

Employment in **wholesale trade** edged up over the month (+13,000). Since reaching an employment trough in May 2010, the industry has added 228,000 jobs.

**Information** employment also edged up in November (+12,000), with the increase concentrated in motion picture and sound recording (+15,000). On net, information employment has changed little over the past 12 months.

In November, **leisure and hospitality** employment continued to trend up (+23,000). Over the past 12 months, the industry has added 305,000 jobs.

Employment in **construction** declined by 20,000 in November, with much of the loss occurring in construction of buildings (-11,000). Since early 2010, employment in construction has shown no clear trend.

**Manufacturing** employment changed little over the month. Within the industry, job losses in food manufacturing (-12,000) and chemicals (-9,000) more than offset gains in motor vehicles and parts (+10,000) and wood products (+3,000). On net, manufacturing employment has changed little since this past spring.

Employment in other major industries, including **mining and logging, transportation and warehousing, financial activities, and government**, showed little change in November.

The **average workweek for all employees** on private nonfarm payrolls remained at 34.4 hours in November. The manufacturing workweek edged up by 0.1 hour to 40.6 hours, and factory overtime was unchanged at 3.2 hours. The average workweek for **production and nonsupervisory employees** on private nonfarm payrolls edged up 0.1 hour to 33.7 hours. (See tables B-2 and B-7.)

In November, **average hourly earnings for all employees** on private nonfarm payrolls rose by 4 cents to \$23.63. Over the past 12 months, average hourly earnings have risen by 1.7 percent. In November, average hourly earnings of private-sector **production and nonsupervisory employees** edged up by 3 cents to \$19.84. (See tables B-3 and B-8.)

The change in total nonfarm payroll employment for September was revised from +148,000 to +132,000, and the change for October was revised from +171,000 to +138,000.

---

**The Employment Situation for December is scheduled to be released on Friday, January 4, 2013, at 8:30 a.m. (EST).**

### **Revision of Seasonally Adjusted Household Survey Data**

In accordance with usual practice, The Employment Situation release for December 2012, scheduled for January 4, 2013, will incorporate annual revisions in seasonally adjusted unemployment and other labor force series from the household survey. Seasonally adjusted data for the most recent 5 years are subject to revision.

### **Household Survey Reference Period**

In the household survey, the reference period for November 2012 was the calendar week that included the 5<sup>th</sup> of the month. Typically, the reference period for the household survey is the calendar week that includes the 12<sup>th</sup> of the month. In accordance with our usual practice for November, the reference and survey periods were a week earlier this year so that household survey interviews would not be conducted during the Thanksgiving holiday.

# HOUSEHOLD DATA

## Summary table A. Household data, seasonally adjusted

[Numbers in thousands]

Category	Nov. 2011	Sept. 2012	Oct. 2012	Nov. 2012	Change from: Oct. 2012- Nov. 2012
<b>Employment status</b>					
Civilian noninstitutional population.....	240,441	243,772	243,983	244,174	191
Civilian labor force.....	153,937	155,063	155,641	155,291	-350
Participation rate.....	64.0	63.6	63.8	63.6	-0.2
Employed.....	140,614	142,974	143,384	143,262	-122
Employment-population ratio.....	58.5	58.7	58.8	58.7	-0.1
Unemployed.....	13,323	12,088	12,258	12,029	-229
Unemployment rate.....	8.7	7.8	7.9	7.7	-0.2
Not in labor force.....	86,503	88,710	88,341	88,883	542
<b>Unemployment rates</b>					
Total, 16 years and over.....	8.7	7.8	7.9	7.7	-0.2
Adult men (20 years and over).....	8.3	7.3	7.3	7.2	-0.1
Adult women (20 years and over).....	7.8	7.0	7.2	7.0	-0.2
Teenagers (16 to 19 years).....	23.7	23.7	23.7	23.5	-0.2
White.....	7.6	7.0	7.0	6.8	-0.2
Black or African American.....	15.5	13.4	14.3	13.2	-1.1
Asian (not seasonally adjusted).....	6.5	4.8	4.9	6.4	-
Hispanic or Latino ethnicity.....	11.4	9.9	10.0	10.0	0.0
Total, 25 years and over.....	7.3	6.6	6.6	6.5	-0.1
Less than a high school diploma.....	13.3	11.3	12.2	12.2	0.0
High school graduates, no college.....	8.8	8.7	8.4	8.1	-0.3
Some college or associate degree.....	7.6	6.5	6.9	6.5	-0.4
Bachelor's degree and higher.....	4.4	4.1	3.8	3.8	0.0
<b>Reason for unemployment</b>					
Job losers and persons who completed temporary jobs.....	7,599	6,535	6,575	6,413	-162
Job leavers.....	1,005	957	1,010	922	-88
Reentrants.....	3,355	3,306	3,300	3,295	-5
New entrants.....	1,276	1,247	1,301	1,327	26
<b>Duration of unemployment</b>					
Less than 5 weeks.....	2,510	2,542	2,632	2,577	-55
5 to 14 weeks.....	2,896	2,826	2,851	2,747	-104
15 to 26 weeks.....	2,087	1,860	1,836	1,819	-17
27 weeks and over.....	5,680	4,844	5,002	4,786	-216
<b>Employed persons at work part time</b>					
Part time for economic reasons.....	8,469	8,613	8,344	8,176	-168
Slack work or business conditions.....	5,578	5,523	5,219	5,105	-114
Could only find part-time work.....	2,496	2,572	2,614	2,658	44
Part time for noneconomic reasons.....	18,363	18,736	18,923	18,588	-335
<b>Persons not in the labor force (not seasonally adjusted)</b>					
Marginally attached to the labor force.....	2,591	2,517	2,433	2,505	-
Discouraged workers.....	1,096	802	813	979	-

- Over-the-month changes are not displayed for not seasonally adjusted data.

NOTE: Persons whose ethnicity is identified as Hispanic or Latino may be of any race. Detail for the seasonally adjusted data shown in this table will not necessarily add to totals because of the independent seasonal adjustment of the various series. Updated population controls are introduced annually with the release of January data.

**ESTABLISHMENT DATA**  
**Summary table B. Establishment data, seasonally adjusted**

Category	Nov. 2011	Sept. 2012	Oct. 2012 <sup>p</sup>	Nov. 2012 <sup>p</sup>
<b>EMPLOYMENT BY SELECTED INDUSTRY</b> (Over-the-month change, in thousands)				
Total nonfarm.....	157	132	138	146
Total private.....	178	122	189	147
Goods-producing.....	8	-17	18	-22
Mining and logging.....	4	0	-7	5
Construction.....	1	-1	15	-20
Manufacturing.....	3	-16	10	-7
Durable goods <sup>1</sup> .....	14	-14	7	11
Motor vehicles and parts.....	1.4	-1.4	-2.5	9.7
Nondurable goods.....	-11	-2	3	-18
Private service-providing <sup>1</sup> .....	170	139	171	169
Wholesale trade.....	6.9	-0.5	8.0	13.1
Retail trade.....	33.8	36.6	50.9	52.6
Transportation and warehousing.....	9.9	3.7	9.2	3.5
Information.....	-2	-8	-5	12
Financial activities.....	11	14	5	1
Professional and business services <sup>1</sup> .....	39	8	55	43
Temporary help services.....	19.7	-10.0	13.9	18.0
Education and health services <sup>1</sup> .....	20	45	24	18
Health care and social assistance.....	6.2	37.3	38.2	22.0
Leisure and hospitality.....	42	28	20	23
Other services.....	8	11	5	3
Government.....	-21	10	-51	-1
<b>WOMEN AND PRODUCTION AND NONSUPERVISORY EMPLOYEES</b> AS A PERCENT OF ALL EMPLOYEES <sup>2</sup>				
Total nonfarm women employees.....	49.4	49.3	49.3	49.3
Total private women employees.....	47.9	47.8	47.8	47.8
Total private production and nonsupervisory employees.....	82.5	82.6	82.6	82.6
<b>HOURS AND EARNINGS</b> ALL EMPLOYEES				
<b>Total private</b>				
Average weekly hours.....	34.4	34.5	34.4	34.4
Average hourly earnings.....	\$ 23.23	\$ 23.60	\$ 23.59	\$ 23.63
Average weekly earnings.....	\$799.11	\$814.20	\$811.50	\$812.87
Index of aggregate weekly hours (2007=100) <sup>3</sup> .....	94.8	96.4	96.3	96.5
Over-the-month percent change.....	0.2	0.3	-0.1	0.2
Index of aggregate weekly payrolls (2007=100) <sup>4</sup> .....	105.0	108.5	108.4	108.7
Over-the-month percent change.....	0.2	0.7	-0.1	0.3
<b>HOURS AND EARNINGS</b> PRODUCTION AND NONSUPERVISORY EMPLOYEES				
<b>Total private</b>				
Average weekly hours.....	33.7	33.7	33.6	33.7
Average hourly earnings.....	\$ 19.59	\$ 19.80	\$ 19.81	\$ 19.84
Average weekly earnings.....	\$660.18	\$667.26	\$665.62	\$668.61
Index of aggregate weekly hours (2002=100) <sup>3</sup> .....	102.2	103.8	103.7	104.1
Over-the-month percent change.....	0.2	0.4	-0.1	0.4
Index of aggregate weekly payrolls (2002=100) <sup>4</sup> .....	133.7	137.3	137.2	138.0
Over-the-month percent change.....	0.3	0.7	-0.1	0.6
<b>DIFFUSION INDEX</b> (Over 1-month span) <sup>5</sup>				
Total private (266 industries).....	55.6	57.0	63.0	59.0
Manufacturing (81 industries).....	48.1	43.2	56.8	47.5

1 Includes other industries, not shown separately.

2 Data relate to production employees in mining and logging and manufacturing, construction employees in construction, and nonsupervisory employees in the service-providing industries.

3 The indexes of aggregate weekly hours are calculated by dividing the current month's estimates of aggregate hours by the corresponding annual average aggregate hours.

4 The indexes of aggregate weekly payrolls are calculated by dividing the current month's estimates of aggregate weekly payrolls by the corresponding annual average aggregate weekly payrolls.

5 Figures are the percent of industries with employment increasing plus one-half of the industries with unchanged employment, where 50 percent indicates an equal balance between industries with increasing and decreasing employment.

p Preliminary

NOTE: Data in this table have been corrected. For more information see [http://www.bls.gov/bls/ceswomen\\_usps\\_correction.htm](http://www.bls.gov/bls/ceswomen_usps_correction.htm).

# Frequently Asked Questions about Employment and Unemployment Estimates

## 1. Why are there two monthly measures of employment?

The household survey and establishment survey both produce sample-based estimates of employment, and both have strengths and limitations. The establishment survey employment series has a smaller margin of error on the measurement of month-to-month change than the household survey because of its much larger sample size. An over-the-month employment change of about 100,000 is statistically significant in the establishment survey, while the threshold for a statistically significant change in the household survey is about 400,000. However, the household survey has a more expansive scope than the establishment survey because it includes self-employed workers whose businesses are unincorporated, unpaid family workers, agricultural workers, and private household workers, who are excluded by the establishment survey. The household survey also provides estimates of employment for demographic groups. For more information on the differences between the two surveys, please visit [www.bls.gov/web/empsit/ces\\_cps\\_trends.pdf](http://www.bls.gov/web/empsit/ces_cps_trends.pdf).

## 2. Are undocumented immigrants counted in the surveys?

It is likely that both surveys include at least some undocumented immigrants. However, neither the establishment nor the household survey is designed to identify the legal status of workers. Therefore, it is not possible to determine how many are counted in either survey. The establishment survey does not collect data on the legal status of workers. The household survey does include questions which identify the foreign and native born, but it does not include questions about the legal status of the foreign born. Data on the foreign and native born are published each month in table A-7 of The Employment Situation news release.

## 3. Why does the establishment survey have revisions?

The establishment survey revises published estimates to improve its data series by incorporating additional information that was not available at the time of the initial publication of the estimates. The establishment survey revises its initial monthly estimates twice, in the immediately succeeding 2 months, to incorporate additional sample receipts from respondents in the survey and recalculated seasonal adjustment factors. For more information on the monthly revisions, please visit [www.bls.gov/ces/cesrevinfo.htm](http://www.bls.gov/ces/cesrevinfo.htm).

On an annual basis, the establishment survey incorporates a benchmark revision that re-anchors estimates to nearly complete employment counts available from unemployment insurance tax records. The benchmark helps to control for sampling and modeling errors in the estimates. For more information on the annual benchmark revision, please visit [www.bls.gov/web/empsit/cesbmart.htm](http://www.bls.gov/web/empsit/cesbmart.htm).

## 4. Does the establishment survey sample include small firms?

Yes; about 40 percent of the establishment survey sample is comprised of business establishments with fewer than 20 employees. The establishment survey sample is designed to maximize the reliability of the statewide total nonfarm employment estimate; firms from all states, size classes, and industries are appropriately sampled to achieve that goal.

## **5. Does the establishment survey account for employment from new businesses?**

Yes; monthly establishment survey estimates include an adjustment to account for the net employment change generated by business births and deaths. The adjustment comes from an econometric model that forecasts the monthly net jobs impact of business births and deaths based on the actual past values of the net impact that can be observed with a lag from the Quarterly Census of Employment and Wages. The establishment survey uses modeling rather than sampling for this purpose because the survey is not immediately able to bring new businesses into the sample. There is an unavoidable lag between the birth of a new firm and its appearance on the sampling frame and availability for selection. BLS adds new businesses to the survey twice a year.

## **6. Is the count of unemployed persons limited to just those people receiving unemployment insurance benefits?**

No; the estimate of unemployment is based on a monthly sample survey of households. All persons who are without jobs and are actively seeking and available to work are included among the unemployed. (People on temporary layoff are included even if they do not actively seek work.) There is no requirement or question relating to unemployment insurance benefits in the monthly survey.

## **7. Does the official unemployment rate exclude people who want a job but are not currently looking for work?**

Yes; however, there are separate estimates of persons outside the labor force who want a job, including those who are not currently looking because they believe no jobs are available (discouraged workers). In addition, alternative measures of labor underutilization (some of which include discouraged workers and other groups not officially counted as unemployed) are published each month in table A-15 of The Employment Situation news release. For more information about these alternative measures, please visit [www.bls.gov/cps/lfcharacteristics.htm#altmeasures](http://www.bls.gov/cps/lfcharacteristics.htm#altmeasures).

## **8. How can unusually severe weather affect employment and hours estimates?**

In the establishment survey, the reference period is the pay period that includes the 12th of the month. Unusually severe weather is more likely to have an impact on average weekly hours than on employment. Average weekly hours are estimated for paid time during the pay period, including pay for holidays, sick leave, or other time off. The impact of severe weather on hours estimates typically, but not always, results in a reduction in average weekly hours. For example, some employees may be off work for part of the pay period and not receive pay for the time missed, while some workers, such as those dealing with cleanup or repair, may work extra hours.

In order for severe weather conditions to reduce the estimate of payroll employment, employees have to be off work without pay for the entire pay period. Slightly more than 20 percent of all employees in the payroll survey sample have a weekly pay period. Employees who receive pay for any part of the pay period, even 1 hour, are counted in the payroll employment figures. It is not possible to quantify the effect of extreme weather on estimates of over-the-month change in employment.

In the household survey, the reference period is generally the calendar week that includes the 12th of the month. Persons who miss the entire week's work for weather-related events are counted as employed whether or not they are paid for the time off. The household survey collects data on the number of persons who had a job but were not at work due to bad weather. It also provides a measure of the number of persons who usually work full time but had reduced hours. Current and historical data are available on the household survey's most requested statistics page at <http://data.bls.gov/cgi-bin/surveymost?ln>.



# Technical Note

This news release presents statistics from two major surveys, the Current Population Survey (CPS; household survey) and the Current Employment Statistics survey (CES; establishment survey). The household survey provides information on the labor force, employment, and unemployment that appears in the "A" tables, marked HOUSEHOLD DATA. It is a sample survey of about 60,000 eligible households conducted by the U.S. Census Bureau for the U.S. Bureau of Labor Statistics (BLS).

The establishment survey provides information on employment, hours, and earnings of employees on nonfarm payrolls; the data appear in the "B" tables, marked ESTABLISHMENT DATA. BLS collects these data each month from the payroll records of a sample of nonagricultural business establishments. Each month the CES program surveys about 141,000 businesses and government agencies, representing approximately 486,000 individual worksites, in order to provide detailed industry data on employment, hours, and earnings of workers on nonfarm payrolls. The active sample includes approximately one-third of all nonfarm payroll employees.

For both surveys, the data for a given month relate to a particular week or pay period. In the household survey, the reference period is generally the calendar week that contains the 12th day of the month. In the establishment survey, the reference period is the pay period including the 12th, which may or may not correspond directly to the calendar week.

## Coverage, definitions, and differences between surveys

**Household survey.** The sample is selected to reflect the entire civilian noninstitutional population. Based on responses to a series of questions on work and job search activities, each person 16 years and over in a sample household is classified as employed, unemployed, or not in the labor force.

People are classified as *employed* if they did any work at all as paid employees during the reference week; worked in their own business, profession, or on their own farm; or worked without pay at least 15 hours in a family business or farm. People are also counted as employed if they were temporarily absent from their jobs because of illness, bad weather, vacation, labor-management disputes, or personal reasons.

People are classified as *unemployed* if they meet all of the following criteria: they had no employment during the reference week; they were available for work at that time; and they made specific efforts to find employment sometime during the 4-week period ending with the reference week. Persons laid off from a job and expecting recall need not be looking for work to be counted as unemployed. The unemployment data derived from the household survey in no way depend upon the eligibility for or receipt of unemployment insurance benefits.

The *civilian labor force* is the sum of employed and unemployed persons. Those not classified as employed

or unemployed are *not in the labor force*. The *unemployment rate* is the number unemployed as a percent of the labor force. The *labor force participation rate* is the labor force as a percent of the population, and the *employment-population ratio* is the employed as a percent of the population. Additional information about the household survey can be found at [www.bls.gov/cps/documentation.htm](http://www.bls.gov/cps/documentation.htm).

**Establishment survey.** The sample establishments are drawn from private nonfarm businesses such as factories, offices, and stores, as well as from federal, state, and local government entities. *Employees on nonfarm payrolls* are those who received pay for any part of the reference pay period, including persons on paid leave. Persons are counted in each job they hold. *Hours and earnings* data are produced for the private sector for all employees and for production and nonsupervisory employees. *Production and nonsupervisory* employees are defined as production and related employees in manufacturing and mining and logging, construction workers in construction, and non-supervisory employees in private service-providing industries.

Industries are classified on the basis of an establishment's principal activity in accordance with the 2012 version of the North American Industry Classification System. Additional information about the establishment survey can be found at [www.bls.gov/ces/#technical](http://www.bls.gov/ces/#technical).

**Differences in employment estimates.** The numerous conceptual and methodological differences between the household and establishment surveys result in important distinctions in the employment estimates derived from the surveys. Among these are:

- The household survey includes agricultural workers, self-employed workers whose businesses are unincorporated, unpaid family workers, and private household workers among the employed. These groups are excluded from the establishment survey.
- The household survey includes people on unpaid leave among the employed. The establishment survey does not.
- The household survey is limited to workers 16 years of age and older. The establishment survey is not limited by age.
- The household survey has no duplication of individuals, because individuals are counted only once, even if they hold more than one job. In the establishment survey, employees working at more than one job and thus appearing on more than one payroll are counted separately for each appearance.

## Seasonal adjustment

Over the course of a year, the size of the nation's labor force and the levels of employment and unemployment undergo regularly occurring fluctuations. These events may result from seasonal changes in weather, major holidays, and the opening and closing of schools. The effect of such seasonal variation can be very large.

Because these seasonal events follow a more or less regular pattern each year, their influence on the level of a series can be tempered by adjusting for regular seasonal variation. These adjustments make nonseasonal developments, such as declines in employment or increases in the participation of women in the labor force, easier to spot. For example, in the household survey, the large number of youth entering the labor force each June is likely to obscure any other changes that have taken place relative to May, making it difficult to determine if the level of economic activity has risen or declined. Similarly, in the establishment survey, payroll employment in education declines by about 20 percent at the end of the spring term and later rises with the start of the fall term, obscuring the underlying employment trends in the industry. Because seasonal employment changes at the end and beginning of the school year can be estimated, the statistics can be adjusted to make underlying employment patterns more discernable. The seasonally adjusted figures provide a more useful tool with which to analyze changes in month-to-month economic activity.

Many seasonally adjusted series are independently adjusted in both the household and establishment surveys. However, the adjusted series for many major estimates, such as total payroll employment, employment in most major sectors, total employment, and unemployment are computed by aggregating independently adjusted component series. For example, total unemployment is derived by summing the adjusted series for four major age-sex components; this differs from the unemployment estimate that would be obtained by directly adjusting the total or by combining the duration, reasons, or more detailed age categories.

For both the household and establishment surveys, a concurrent seasonal adjustment methodology is used in which new seasonal factors are calculated each month using all relevant data, up to and including the data for the current month. In the household survey, new seasonal factors are used to adjust only the current month's data. In the establishment survey, however, new seasonal factors are used each month to adjust the three most recent monthly estimates. The prior 2 months are routinely revised to incorporate additional sample reports and recalculated seasonal adjustment factors. In both surveys, 5-year revisions to historical data are made once a year.

## Reliability of the estimates

Statistics based on the household and establishment surveys are subject to both sampling and nonsampling error

When a sample, rather than the entire population, is surveyed, there is a chance that the sample estimates may differ from the true population values they represent. The component of this difference that occurs because samples differ by chance is known as *sampling error*, and its variability is measured by the standard error of the estimate. There is about a 90-percent chance, or level of confidence, that an estimate based on a sample will differ by no more than 1.6 standard errors from the true population value because of sampling error. BLS analyses are generally conducted at the 90-percent level of confidence.

For example, the confidence interval for the monthly change in total nonfarm employment from the establishment survey is on the order of plus or minus 100,000. Suppose the estimate of nonfarm employment increases by 50,000 from one month to the next. The 90-percent confidence interval on the monthly change would range from -50,000 to +150,000 (50,000 +/- 100,000). These figures do not mean that the sample results are off by these magnitudes, but rather that there is about a 90-percent chance that the true over-the-month change lies within this interval. Since this range includes values of less than zero, we could not say with confidence that nonfarm employment had, in fact, increased that month. If, however, the reported nonfarm employment rise was 250,000, then all of the values within the 90-percent confidence interval would be greater than zero. In this case, it is likely (at least a 90-percent chance) that nonfarm employment had, in fact, risen that month. At an unemployment rate of around 6.0 percent, the 90-percent confidence interval for the monthly change in unemployment as measured by the household survey is about +/- 300,000, and for the monthly change in the unemployment rate it is about +/- 0.2 percentage point.

In general, estimates involving many individuals or establishments have lower standard errors (relative to the size of the estimate) than estimates which are based on a small number of observations. The precision of estimates also is improved when the data are cumulated over time, such as for quarterly and annual averages.

The household and establishment surveys are also affected by *nonsampling error*, which can occur for many reasons, including the failure to sample a segment of the population, inability to obtain information for all respondents in the sample, inability or unwillingness of respondents to provide correct information on a timely basis, mistakes made by respondents, and errors made in the collection or processing of the data.

For example, in the establishment survey, estimates for the most recent 2 months are based on incomplete returns; for this reason, these estimates are labeled preliminary in the tables. It is only after two successive revisions to a monthly estimate, when nearly all sample reports have been received, that the estimate is considered final.

Another major source of nonsampling error in the establishment survey is the inability to capture, on a timely basis, employment generated by new firms. To correct for this systematic underestimation of employment growth, an estimation procedure with two components is used to

account for business births. The first component excludes employment losses from business deaths from sample-based estimation in order to offset the missing employment gains from business births. This is incorporated into the sample-based estimation procedure by simply not reflecting sample units going out of business, but imputing to them the same employment trend as the other firms in the sample. This procedure accounts for most of the net birth/death employment.

The second component is an ARIMA time series model designed to estimate the residual net birth/death employment not accounted for by the imputation. The historical time series used to create and test the ARIMA model was derived from the unemployment insurance universe micro-level database, and reflects the actual residual net of births and deaths over the past 5 years.

The sample-based estimates from the establishment

survey are adjusted once a year (on a lagged basis) to universe counts of payroll employment obtained from administrative records of the unemployment insurance program. The difference between the March sample-based employment estimates and the March universe counts is known as a benchmark revision, and serves as a rough proxy for total survey error. The new benchmarks also incorporate changes in the classification of industries. Over the past decade, absolute benchmark revisions for total nonfarm employment have averaged 0.3 percent, with a range from -0.7 to 0.6 percent.

#### **Other information**

Information in this release will be made available to sensory impaired individuals upon request. Voice phone: (202) 691-5200; Federal Relay Service: (800) 877-8339.

# HOUSEHOLD DATA

## Table A-1. Employment status of the civilian population by sex and age

[Numbers in thousands]

Employment status, sex, and age	Not seasonally adjusted			Seasonally adjusted <sup>1</sup>					
	Nov. 2011	Oct. 2012	Nov. 2012	Nov. 2011	July 2012	Aug. 2012	Sept. 2012	Oct. 2012	Nov. 2012
<b>TOTAL</b>									
Civilian noninstitutional population.....	240,441	243,983	244,174	240,441	243,354	243,566	243,772	243,983	244,174
Civilian labor force.....	153,683	155,779	154,953	153,937	155,013	154,645	155,063	155,641	155,291
Participation rate.....	63.9	63.8	63.5	64.0	63.7	63.5	63.6	63.8	63.6
Employed.....	141,070	144,039	143,549	140,614	142,220	142,101	142,974	143,384	143,262
Employment-population ratio.....	58.7	59.0	58.8	58.5	58.4	58.3	58.7	58.8	58.7
Unemployed.....	12,613	11,741	11,404	13,323	12,794	12,544	12,088	12,258	12,029
Unemployment rate.....	8.2	7.5	7.4	8.7	8.3	8.1	7.8	7.9	7.7
Not in labor force.....	86,757	88,204	89,221	86,503	88,340	88,921	88,710	88,341	88,883
Persons who currently want a job.....	6,183	6,142	6,495	6,595	6,554	6,957	6,727	6,587	6,817
<b>Men, 16 years and over</b>									
Civilian noninstitutional population.....	116,755	117,710	117,810	116,755	117,381	117,492	117,600	117,710	117,810
Civilian labor force.....	82,080	82,715	82,310	82,341	82,395	82,008	82,384	82,696	82,495
Participation rate.....	70.3	70.3	69.9	70.5	70.2	69.8	70.1	70.3	70.0
Employed.....	75,157	76,498	76,142	74,975	75,466	75,161	75,752	76,055	75,968
Employment-population ratio.....	64.4	65.0	64.6	64.2	64.3	64.0	64.4	64.6	64.5
Unemployed.....	6,923	6,217	6,167	7,366	6,929	6,847	6,632	6,642	6,527
Unemployment rate.....	8.4	7.5	7.5	8.9	8.4	8.3	8.0	8.0	7.9
Not in labor force.....	34,674	34,995	35,501	34,414	34,987	35,484	35,216	35,014	35,315
<b>Men, 20 years and over</b>									
Civilian noninstitutional population.....	108,203	109,096	109,206	108,203	108,727	108,851	108,973	109,096	109,206
Civilian labor force.....	79,378	79,873	79,554	79,440	79,353	79,103	79,426	79,708	79,539
Participation rate.....	73.4	73.2	72.8	73.4	73.0	72.7	72.9	73.1	72.8
Employed.....	73,183	74,416	74,121	72,846	73,227	73,086	73,597	73,868	73,796
Employment-population ratio.....	67.6	68.2	67.9	67.3	67.3	67.1	67.5	67.7	67.6
Unemployed.....	6,195	5,457	5,433	6,594	6,125	6,016	5,829	5,840	5,743
Unemployment rate.....	7.8	6.8	6.8	8.3	7.7	7.6	7.3	7.3	7.2
Not in labor force.....	28,825	29,222	29,652	28,763	29,374	29,748	29,547	29,388	29,667
<b>Women, 16 years and over</b>									
Civilian noninstitutional population.....	123,686	126,273	126,364	123,686	125,972	126,073	126,172	126,273	126,364
Civilian labor force.....	71,603	73,064	72,644	71,596	72,619	72,637	72,678	72,945	72,796
Participation rate.....	57.9	57.9	57.5	57.9	57.6	57.6	57.6	57.8	57.6
Employed.....	65,913	67,540	67,407	65,639	66,754	66,940	67,222	67,329	67,293
Employment-population ratio.....	53.3	53.5	53.3	53.1	53.0	53.1	53.3	53.3	53.3
Unemployed.....	5,690	5,523	5,237	5,957	5,865	5,697	5,456	5,616	5,502
Unemployment rate.....	7.9	7.6	7.2	8.3	8.1	7.8	7.5	7.7	7.6
Not in labor force.....	52,083	53,209	53,720	52,090	53,354	53,437	53,493	53,328	53,568
<b>Women, 20 years and over</b>									
Civilian noninstitutional population.....	115,526	117,980	118,079	115,526	117,648	117,760	117,869	117,980	118,079
Civilian labor force.....	68,850	70,277	69,873	68,711	69,691	69,781	69,834	70,075	69,897
Participation rate.....	59.6	59.6	59.2	59.5	59.2	59.3	59.2	59.4	59.2
Employed.....	63,710	65,316	65,175	63,352	64,446	64,670	64,952	65,043	64,987
Employment-population ratio.....	55.1	55.4	55.2	54.8	54.8	54.9	55.1	55.1	55.0
Unemployed.....	5,140	4,961	4,698	5,359	5,244	5,111	4,882	5,032	4,911
Unemployment rate.....	7.5	7.1	6.7	7.8	7.5	7.3	7.0	7.2	7.0
Not in labor force.....	46,675	47,703	48,206	46,815	47,957	47,979	48,034	47,906	48,181
<b>Both sexes, 16 to 19 years</b>									
Civilian noninstitutional population.....	16,711	16,907	16,890	16,711	16,979	16,955	16,931	16,907	16,890
Civilian labor force.....	5,454	5,629	5,526	5,786	5,970	5,761	5,802	5,859	5,855
Participation rate.....	32.6	33.3	32.7	34.6	35.2	34.0	34.3	34.7	34.7
Employed.....	4,177	4,306	4,252	4,416	4,546	4,344	4,425	4,473	4,479
Employment-population ratio.....	25.0	25.5	25.2	26.4	26.8	25.6	26.1	26.5	26.5
Unemployed.....	1,277	1,322	1,273	1,370	1,424	1,417	1,378	1,386	1,376
Unemployment rate.....	23.4	23.5	23.0	23.7	23.8	24.6	23.7	23.7	23.5
Not in labor force.....	11,257	11,278	11,364	10,925	11,009	11,194	11,129	11,048	11,035

<sup>1</sup> The population figures are not adjusted for seasonal variation; therefore, identical numbers appear in the unadjusted and seasonally adjusted columns.

NOTE: Updated population controls are introduced annually with the release of January data.

# HOUSEHOLD DATA

## Table A-2. Employment status of the civilian population by race, sex, and age

[Numbers in thousands]

Employment status, race, sex, and age	Not seasonally adjusted			Seasonally adjusted <sup>1</sup>					
	Nov. 2011	Oct. 2012	Nov. 2012	Nov. 2011	July 2012	Aug. 2012	Sept. 2012	Oct. 2012	Nov. 2012
<b>WHITE</b>									
Civilian noninstitutional population.....	193,598	193,633	193,748	193,598	193,245	193,376	193,503	193,633	193,748
Civilian labor force.....	124,565	124,085	123,503	124,652	123,589	123,265	123,662	123,838	123,501
Participation rate.....	64.3	64.1	63.7	64.4	64.0	63.7	63.9	64.0	63.7
Employed.....	115,584	115,885	115,571	115,130	114,409	114,340	114,992	115,209	115,084
Employment-population ratio.....	59.7	59.8	59.7	59.5	59.2	59.1	59.4	59.5	59.4
Unemployed.....	8,981	8,200	7,932	9,522	9,180	8,925	8,670	8,629	8,417
Unemployment rate.....	7.2	6.6	6.4	7.6	7.4	7.2	7.0	7.0	6.8
Not in labor force.....	69,033	69,548	70,244	68,945	69,656	70,111	69,841	69,795	70,247
<b>Men, 20 years and over</b>									
Civilian labor force.....	65,407	64,923	64,607	65,366	64,467	64,246	64,544	64,759	64,474
Participation rate.....	73.9	73.7	73.3	73.9	73.4	73.1	73.4	73.6	73.2
Employed.....	60,938	60,980	60,713	60,605	60,027	59,890	60,274	60,499	60,351
Employment-population ratio.....	68.9	69.3	68.9	68.5	68.4	68.1	68.5	68.7	68.5
Unemployed.....	4,469	3,943	3,894	4,761	4,440	4,356	4,270	4,261	4,123
Unemployment rate.....	6.8	6.1	6.0	7.3	6.9	6.8	6.6	6.6	6.4
<b>Women, 20 years and over</b>									
Civilian labor force.....	54,659	54,685	54,471	54,520	54,385	54,411	54,531	54,431	54,358
Participation rate.....	59.2	58.8	58.5	59.1	58.6	58.6	58.7	58.5	58.4
Employed.....	51,091	51,352	51,292	50,774	50,662	50,892	51,105	51,022	51,008
Employment-population ratio.....	55.3	55.2	55.1	55.0	54.6	54.8	55.0	54.9	54.8
Unemployed.....	3,568	3,333	3,180	3,746	3,723	3,519	3,426	3,409	3,350
Unemployment rate.....	6.5	6.1	5.8	6.9	6.8	6.5	6.3	6.3	6.2
<b>Both sexes, 16 to 19 years</b>									
Civilian labor force.....	4,499	4,477	4,425	4,766	4,737	4,609	4,588	4,648	4,669
Participation rate.....	35.2	35.5	35.1	37.3	37.4	36.5	36.4	36.9	37.1
Employed.....	3,555	3,553	3,567	3,751	3,720	3,558	3,613	3,689	3,725
Employment-population ratio.....	27.8	28.2	28.3	29.4	29.4	28.2	28.6	29.3	29.6
Unemployed.....	944	924	858	1,015	1,017	1,051	975	959	944
Unemployment rate.....	21.0	20.6	19.4	21.3	21.5	22.8	21.2	20.6	20.2
<b>BLACK OR AFRICAN AMERICAN</b>									
Civilian noninstitutional population.....	29,259	30,027	30,061	29,259	29,918	29,954	29,991	30,027	30,061
Civilian labor force.....	17,900	18,767	18,407	17,934	18,383	18,379	18,345	18,732	18,426
Participation rate.....	61.2	62.5	61.2	61.3	61.4	61.4	61.2	62.4	61.3
Employed.....	15,236	16,172	16,065	15,151	15,798	15,797	15,881	16,049	15,994
Employment-population ratio.....	52.1	53.9	53.4	51.8	52.8	52.7	53.0	53.4	53.2
Unemployed.....	2,664	2,595	2,342	2,783	2,585	2,583	2,464	2,684	2,432
Unemployment rate.....	14.9	13.8	12.7	15.5	14.1	14.1	13.4	14.3	13.2
Not in labor force.....	11,359	11,261	11,654	11,325	11,534	11,575	11,645	11,295	11,635
<b>Men, 20 years and over</b>									
Civilian labor force.....	8,185	8,318	8,275	8,195	8,270	8,228	8,202	8,301	8,244
Participation rate.....	68.4	67.8	67.4	68.5	67.8	67.3	67.0	67.7	67.1
Employed.....	6,917	7,222	7,259	6,851	7,042	7,049	7,035	7,128	7,172
Employment-population ratio.....	57.8	58.9	59.1	57.3	57.7	57.7	57.5	58.1	58.4
Unemployed.....	1,268	1,096	1,016	1,344	1,227	1,180	1,167	1,173	1,072
Unemployment rate.....	15.5	13.2	12.3	16.4	14.8	14.3	14.2	14.1	13.0
<b>Women, 20 years and over</b>									
Civilian labor force.....	9,106	9,710	9,464	9,095	9,344	9,455	9,382	9,675	9,472
Participation rate.....	61.9	64.1	62.4	61.8	62.0	62.6	62.0	63.9	62.4
Employed.....	7,948	8,503	8,404	7,911	8,268	8,316	8,364	8,471	8,391
Employment-population ratio.....	54.0	56.1	55.4	53.7	54.8	55.1	55.3	55.9	55.3
Unemployed.....	1,158	1,206	1,060	1,184	1,076	1,139	1,018	1,204	1,080
Unemployment rate.....	12.7	12.4	11.2	13.0	11.5	12.0	10.9	12.4	11.4
<b>Both sexes, 16 to 19 years</b>									
Civilian labor force.....	608	739	668	643	770	696	761	756	711
Participation rate.....	23.7	28.2	25.6	25.0	29.2	26.4	29.0	28.9	27.3
Employed.....	370	446	402	388	488	432	482	450	431
Employment-population ratio.....	14.4	17.1	15.4	15.1	18.5	16.4	18.4	17.2	16.5
Unemployed.....	238	293	266	255	282	264	279	307	280
Unemployment rate.....	39.1	39.6	39.8	39.6	36.6	37.9	36.7	40.5	39.4
<b>ASIAN</b>									
Civilian noninstitutional population.....	11,589	12,939	12,934	-	-	-	-	-	-

See footnotes at end of table.

**HOUSEHOLD DATA**

**Table A-2. Employment status of the civilian population by race, sex, and age — Continued**

[Numbers in thousands]

Employment status, race, sex, and age	Not seasonally adjusted			Seasonally adjusted <sup>1</sup>					
	Nov. 2011	Oct. 2012	Nov. 2012	Nov. 2011	July 2012	Aug. 2012	Sept. 2012	Oct. 2012	Nov. 2012
Civilian labor force.....	7,419	8,149	8,344	-	-	-	-	-	-
Participation rate.....	64.0	63.0	64.5	-	-	-	-	-	-
Employed.....	6,939	7,753	7,814	-	-	-	-	-	-
Employment-population ratio.....	59.9	59.9	60.4	-	-	-	-	-	-
Unemployed.....	480	396	530	-	-	-	-	-	-
Unemployment rate.....	6.5	4.9	6.4	-	-	-	-	-	-
Not in labor force.....	4,170	4,790	4,590	-	-	-	-	-	-

<sup>1</sup> The population figures are not adjusted for seasonal variation; therefore, identical numbers appear in the unadjusted and seasonally adjusted columns.

- Data not available.

NOTE: Estimates for the above race groups will not sum to totals shown in table A-1 because data are not presented for all races. Updated population controls are introduced annually with the release of January data.

**HOUSEHOLD DATA**

**Table A-3. Employment status of the Hispanic or Latino population by sex and age**

[Numbers in thousands]

Employment status, sex, and age	Not seasonally adjusted			Seasonally adjusted <sup>1</sup>					
	Nov. 2011	Oct. 2012	Nov. 2012	Nov. 2011	July 2012	Aug. 2012	Sept. 2012	Oct. 2012	Nov. 2012
<b>HISPANIC OR LATINO ETHNICITY</b>									
Civilian noninstitutional population.....	34,808	37,058	37,147	34,808	36,792	36,881	36,969	37,058	37,147
Civilian labor force.....	23,255	24,602	24,479	23,222	24,497	24,352	24,477	24,587	24,544
Participation rate.....	66.8	66.4	65.9	66.7	66.6	66.0	66.2	66.3	66.1
Employed.....	20,684	22,221	22,086	20,574	21,966	21,865	22,050	22,118	22,097
Employment-population ratio.....	59.4	60.0	59.5	59.1	59.7	59.3	59.6	59.7	59.5
Unemployed.....	2,571	2,381	2,394	2,648	2,531	2,487	2,427	2,469	2,447
Unemployment rate.....	11.1	9.7	9.8	11.4	10.3	10.2	9.9	10.0	10.0
Not in labor force.....	11,553	12,456	12,667	11,586	12,294	12,529	12,492	12,471	12,603
<b>Men, 20 years and over</b>									
Civilian labor force.....	13,169	13,643	13,463	-	-	-	-	-	-
Participation rate.....	81.7	81.6	80.3	-	-	-	-	-	-
Employed.....	11,884	12,506	12,414	-	-	-	-	-	-
Employment-population ratio.....	73.7	74.8	74.1	-	-	-	-	-	-
Unemployed.....	1,285	1,137	1,050	-	-	-	-	-	-
Unemployment rate.....	9.8	8.3	7.8	-	-	-	-	-	-
<b>Women, 20 years and over</b>									
Civilian labor force.....	9,085	9,897	9,965	-	-	-	-	-	-
Participation rate.....	59.6	59.3	59.6	-	-	-	-	-	-
Employed.....	8,118	8,959	8,938	-	-	-	-	-	-
Employment-population ratio.....	53.2	53.7	53.4	-	-	-	-	-	-
Unemployed.....	967	938	1,027	-	-	-	-	-	-
Unemployment rate.....	10.6	9.5	10.3	-	-	-	-	-	-
<b>Both sexes, 16 to 19 years</b>									
Civilian labor force.....	1,000	1,062	1,051	-	-	-	-	-	-
Participation rate.....	29.2	29.0	28.7	-	-	-	-	-	-
Employed.....	682	755	734	-	-	-	-	-	-
Employment-population ratio.....	19.9	20.7	20.1	-	-	-	-	-	-
Unemployed.....	319	306	317	-	-	-	-	-	-
Unemployment rate.....	31.8	28.9	30.1	-	-	-	-	-	-

1 The population figures are not adjusted for seasonal variation; therefore, identical numbers appear in the unadjusted and seasonally adjusted columns.

- Data not available.

NOTE: Persons whose ethnicity is identified as Hispanic or Latino may be of any race. Updated population controls are introduced annually with the release of January data.

**HOUSEHOLD DATA**

**Table A-4. Employment status of the civilian population 25 years and over by educational attainment**

[Numbers in thousands]

Educational attainment	Not seasonally adjusted			Seasonally adjusted					
	Nov. 2011	Oct. 2012	Nov. 2012	Nov. 2011	July 2012	Aug. 2012	Sept. 2012	Oct. 2012	Nov. 2012
<b>Less than a high school diploma</b>									
Civilian labor force.....	11,673	11,128	11,072	11,713	11,472	11,179	11,199	11,263	11,106
Participation rate.....	46.8	45.3	45.2	47.0	46.3	45.4	45.1	45.9	45.3
Employed.....	10,190	9,865	9,762	10,161	10,012	9,833	9,932	9,886	9,747
Employment-population ratio.....	40.9	40.2	39.8	40.8	40.4	39.9	40.0	40.2	39.7
Unemployed.....	1,483	1,263	1,310	1,552	1,460	1,346	1,267	1,377	1,359
Unemployment rate.....	12.7	11.3	11.8	13.3	12.7	12.0	11.3	12.2	12.2
<b>High school graduates, no college<sup>1</sup></b>									
Civilian labor force.....	37,089	36,614	36,692	37,089	37,047	36,703	36,627	36,778	36,672
Participation rate.....	60.3	59.8	59.5	60.3	59.7	59.9	59.5	60.1	59.4
Employed.....	33,970	33,783	33,863	33,807	33,838	33,486	33,455	33,702	33,695
Employment-population ratio.....	55.2	55.2	54.9	54.9	54.5	54.6	54.4	55.0	54.6
Unemployed.....	3,119	2,831	2,830	3,282	3,209	3,217	3,172	3,076	2,978
Unemployment rate.....	8.4	7.7	7.7	8.8	8.7	8.8	8.7	8.4	8.1
<b>Some college or associate degree</b>									
Civilian labor force.....	37,086	37,905	37,356	36,816	37,398	37,375	37,622	37,775	37,282
Participation rate.....	69.0	69.2	68.6	68.5	68.3	68.3	68.8	69.0	68.4
Employed.....	34,347	35,307	35,009	34,009	34,729	34,895	35,191	35,176	34,853
Employment-population ratio.....	63.9	64.5	64.3	63.3	63.4	63.8	64.3	64.3	64.0
Unemployed.....	2,739	2,598	2,348	2,807	2,669	2,480	2,431	2,599	2,429
Unemployment rate.....	7.4	6.9	6.3	7.6	7.1	6.6	6.5	6.9	6.5
<b>Bachelor's degree and higher<sup>2</sup></b>									
Civilian labor force.....	47,147	49,006	48,853	47,117	47,697	48,404	48,469	48,676	48,844
Participation rate.....	76.0	75.8	75.5	75.9	75.8	75.5	75.9	75.3	75.5
Employed.....	45,161	47,242	47,039	45,058	45,732	46,400	46,503	46,849	46,968
Employment-population ratio.....	72.8	73.1	72.7	72.6	72.7	72.4	72.8	72.5	72.6
Unemployed.....	1,985	1,764	1,815	2,059	1,965	2,004	1,966	1,827	1,876
Unemployment rate.....	4.2	3.6	3.7	4.4	4.1	4.1	4.1	3.8	3.8

1 Includes persons with a high school diploma or equivalent.

2 Includes persons with bachelor's, master's, professional, and doctoral degrees.

NOTE: Updated population controls are introduced annually with the release of January data.



**HOUSEHOLD DATA**

**Table A-5. Employment status of the civilian population 18 years and over by veteran status, period of service, and sex, not seasonally adjusted**

[Numbers in thousands]

Employment status, veteran status, and period of service	Total		Men		Women	
	Nov. 2011	Nov. 2012	Nov. 2011	Nov. 2012	Nov. 2011	Nov. 2012
<b>VETERANS, 18 years and over</b>						
Civilian noninstitutional population.....	21,463	21,042	19,657	19,223	1,806	1,819
Civilian labor force.....	11,181	10,921	10,055	9,764	1,126	1,157
Participation rate.....	52.1	51.9	51.2	50.8	62.3	63.6
Employed.....	10,350	10,199	9,303	9,151	1,047	1,049
Employment-population ratio.....	48.2	48.5	47.3	47.6	58.0	57.6
Unemployed.....	832	721	753	613	79	108
Unemployment rate.....	7.4	6.6	7.5	6.3	7.0	9.3
Not in labor force.....	10,282	10,121	9,602	9,459	680	662
<b>  Gulf War-era II veterans</b>						
Civilian noninstitutional population.....	2,400	2,575	2,053	2,144	347	431
Civilian labor force.....	1,994	2,121	1,741	1,813	253	307
Participation rate.....	83.1	82.4	84.8	84.6	72.9	71.3
Employed.....	1,773	1,909	1,567	1,642	206	268
Employment-population ratio.....	73.9	74.1	76.3	76.6	59.3	62.1
Unemployed.....	221	211	174	172	47	40
Unemployment rate.....	11.1	10.0	10.0	9.5	18.7	12.9
Not in labor force.....	406	454	312	331	94	124
<b>  Gulf War-era I veterans</b>						
Civilian noninstitutional population.....	2,922	3,027	2,444	2,545	479	482
Civilian labor force.....	2,446	2,519	2,104	2,165	341	354
Participation rate.....	83.7	83.2	86.1	85.1	71.3	73.4
Employed.....	2,320	2,383	1,987	2,063	333	320
Employment-population ratio.....	79.4	78.7	81.3	81.1	69.6	66.4
Unemployed.....	126	135	118	102	8	34
Unemployment rate.....	5.2	5.4	5.6	4.7	2.4	9.5
Not in labor force.....	477	509	339	380	137	128
<b>  World War II, Korean War, and Vietnam-era veterans</b>						
Civilian noninstitutional population.....	10,224	9,706	9,905	9,395	319	311
Civilian labor force.....	3,326	2,979	3,226	2,878	101	101
Participation rate.....	32.5	30.7	32.6	30.6	31.5	32.4
Employed.....	3,099	2,803	2,998	2,711	101	92
Employment-population ratio.....	30.3	28.9	30.3	28.9	31.5	29.4
Unemployed.....	227	176	227	167	0	9
Unemployment rate.....	6.8	5.9	7.0	5.8	0.0	9.1
Not in labor force.....	6,898	6,728	6,679	6,517	219	211
<b>  Veterans of other service periods</b>						
Civilian noninstitutional population.....	5,917	5,733	5,256	5,139	661	594
Civilian labor force.....	3,416	3,303	2,985	2,908	431	395
Participation rate.....	57.7	57.6	56.8	56.6	65.2	66.5
Employed.....	3,158	3,104	2,751	2,735	408	369
Employment-population ratio.....	53.4	54.1	52.3	53.2	61.7	62.1
Unemployed.....	257	199	234	173	23	26
Unemployment rate.....	7.5	6.0	7.8	6.0	5.4	6.5
Not in labor force.....	2,501	2,431	2,271	2,231	230	199
<b>NONVETERANS, 18 years and over</b>						
Civilian noninstitutional population.....	210,130	214,099	92,624	93,938	117,506	120,161
Civilian labor force.....	140,734	142,232	71,217	71,672	69,517	70,560
Participation rate.....	67.0	66.4	76.9	76.3	59.2	58.7
Employed.....	129,352	132,060	65,260	66,399	64,092	65,662
Employment-population ratio.....	61.6	61.7	70.5	70.7	54.5	54.6
Unemployed.....	11,382	10,172	5,957	5,273	5,425	4,899
Unemployment rate.....	8.1	7.2	8.4	7.4	7.8	6.9
Not in labor force.....	69,396	71,867	21,407	22,266	47,989	49,601

NOTE: Veterans served on active duty in the U.S. Armed Forces and were not on active duty at the time of the survey. Nonveterans never served on active duty in the U.S. Armed Forces. Veterans could have served anywhere in the world during these periods of service: Gulf War era II (September 2001-present), Gulf War era I (August 1990-August 2001), Vietnam era (August 1964-April 1975), Korean War (July 1950-January 1955), World War II (December 1941-December 1946), and other service periods (all other time periods). Veterans who served in more than one wartime period are classified only in the most recent one. Veterans who served during one of the selected wartime periods and another period are classified only in the wartime period. Updated population controls are introduced annually with the release of January data.

**HOUSEHOLD DATA**

**Table A-6. Employment status of the civilian population by sex, age, and disability status, not seasonally adjusted**

[Numbers in thousands]

Employment status, sex, and age	Persons with a disability		Persons with no disability	
	Nov. 2011	Nov. 2012	Nov. 2011	Nov. 2012
<b>TOTAL, 16 years and over</b>				
Civilian noninstitutional population.....	27,331	28,888	213,110	215,286
Civilian labor force.....	5,676	5,990	148,007	148,963
Participation rate.....	20.8	20.7	69.5	69.2
Employed.....	4,938	5,230	136,132	138,320
Employment-population ratio.....	18.1	18.1	63.9	64.2
Unemployed.....	738	761	11,875	10,644
Unemployment rate.....	13.0	12.7	8.0	7.1
Not in labor force.....	21,655	22,898	65,103	66,323
<b>Men, 16 to 64 years</b>				
Civilian labor force.....	2,617	2,751	75,366	75,035
Participation rate.....	34.5	35.0	82.4	82.3
Employed.....	2,223	2,353	69,099	69,526
Employment-population ratio.....	29.3	30.0	75.6	76.2
Unemployed.....	394	398	6,267	5,509
Unemployment rate.....	15.1	14.5	8.3	7.3
Not in labor force.....	4,973	5,100	16,084	16,174
<b>Women, 16 to 64 years</b>				
Civilian labor force.....	2,173	2,187	66,205	67,037
Participation rate.....	29.6	28.2	70.5	70.7
Employed.....	1,893	1,920	61,025	62,263
Employment-population ratio.....	25.8	24.7	65.0	65.7
Unemployed.....	279	268	5,180	4,774
Unemployment rate.....	12.9	12.2	7.8	7.1
Not in labor force.....	5,161	5,571	27,654	27,763
<b>Both sexes, 65 years and over</b>				
Civilian labor force.....	886	1,052	6,436	6,891
Participation rate.....	7.1	7.9	23.2	23.5
Employed.....	821	957	6,009	6,530
Employment-population ratio.....	6.6	7.2	21.6	22.3
Unemployed.....	64	95	427	360
Unemployment rate.....	7.3	9.0	6.6	5.2
Not in labor force.....	11,521	12,228	21,365	22,386

NOTE: A person with a disability has at least one of the following conditions: is deaf or has serious difficulty hearing; is blind or has serious difficulty seeing even when wearing glasses; has serious difficulty concentrating, remembering, or making decisions because of a physical, mental, or emotional condition; has serious difficulty walking or climbing stairs; has difficulty dressing or bathing; or has difficulty doing errands alone such as visiting a doctor's office or shopping because of a physical, mental, or emotional condition. Updated population controls are introduced annually with the release of January data.

**HOUSEHOLD DATA**

**Table A-7. Employment status of the civilian population by nativity and sex, not seasonally adjusted**

[Numbers in thousands]

Employment status and nativity	Total		Men		Women	
	Nov. 2011	Nov. 2012	Nov. 2011	Nov. 2012	Nov. 2011	Nov. 2012
<b>Foreign born, 16 years and over</b>						
Civilian noninstitutional population.....	36,705	38,105	18,196	18,485	18,509	19,620
Civilian labor force.....	24,696	25,217	14,468	14,384	10,228	10,832
Participation rate.....	67.3	66.2	79.5	77.8	55.3	55.2
Employed.....	22,631	23,272	13,328	13,410	9,303	9,862
Employment-population ratio.....	61.7	61.1	73.2	72.5	50.3	50.3
Unemployed.....	2,065	1,945	1,140	974	925	971
Unemployment rate.....	8.4	7.7	7.9	6.8	9.0	9.0
Not in labor force.....	12,009	12,888	3,728	4,101	8,282	8,788
<b>Native born, 16 years and over</b>						
Civilian noninstitutional population.....	203,735	206,069	98,559	99,325	105,176	106,744
Civilian labor force.....	128,987	129,737	67,612	67,925	61,375	61,811
Participation rate.....	63.3	63.0	68.6	68.4	58.4	57.9
Employed.....	118,439	120,277	61,829	62,732	56,610	57,545
Employment-population ratio.....	58.1	58.4	62.7	63.2	53.8	53.9
Unemployed.....	10,548	9,459	5,783	5,193	4,765	4,266
Unemployment rate.....	8.2	7.3	8.6	7.6	7.8	6.9
Not in labor force.....	74,748	76,333	30,947	31,400	43,801	44,933

NOTE: The foreign born are those residing in the United States who were not U.S. citizens at birth. That is, they were born outside the United States or one of its outlying areas such as Puerto Rico or Guam, to parents neither of whom was a U.S. citizen. The native born are persons who were born in the United States or one of its outlying areas such as Puerto Rico or Guam or who were born abroad of at least one parent who was a U.S. citizen. Updated population controls are introduced annually with the release of January data.

**HOUSEHOLD DATA**

**Table A-8. Employed persons by class of worker and part-time status**

[In thousands]

Category	Not seasonally adjusted			Seasonally adjusted					
	Nov. 2011	Oct. 2012	Nov. 2012	Nov. 2011	July 2012	Aug. 2012	Sept. 2012	Oct. 2012	Nov. 2012
<b>CLASS OF WORKER</b>									
Agriculture and related industries.....	2,176	2,222	2,045	2,262	2,235	2,151	2,209	2,214	2,131
Wage and salary workers <sup>1</sup> .....	1,319	1,446	1,274	1,359	1,401	1,391	1,413	1,415	1,325
Self-employed workers, unincorporated.....	824	758	761	849	791	739	763	755	781
Unpaid family workers.....	33	18	11	-	-	-	-	-	-
Nonagricultural industries.....	138,894	141,817	141,504	138,304	139,929	139,920	140,769	141,286	141,156
Wage and salary workers <sup>1</sup> .....	130,261	132,967	132,458	129,604	131,043	131,101	131,734	132,383	132,052
Government.....	20,525	20,745	20,702	20,434	20,015	20,432	20,619	20,524	20,559
Private industries.....	109,736	112,222	111,757	109,159	110,974	110,726	111,024	111,771	111,468
Private households.....	674	707	754	-	-	-	-	-	-
Other industries.....	109,062	111,514	111,002	108,485	110,251	109,965	110,218	111,057	110,699
Self-employed workers, unincorporated.....	8,576	8,775	8,977	8,628	8,824	8,720	8,838	8,795	8,958
Unpaid family workers.....	57	76	69	-	-	-	-	-	-
<b>PERSONS AT WORK PART TIME<sup>2</sup></b>									
<b>All industries</b>									
Part time for economic reasons <sup>3</sup> .....	8,271	7,870	7,994	8,469	8,246	8,031	8,613	8,344	8,176
Slack work or business conditions.....	5,499	4,976	5,032	5,578	5,342	5,217	5,523	5,219	5,105
Could only find part-time work.....	2,492	2,634	2,706	2,496	2,576	2,507	2,572	2,614	2,658
Part time for noneconomic reasons <sup>4</sup> .....	19,355	19,460	19,392	18,363	18,866	18,996	18,736	18,923	18,588
<b>Nonagricultural industries</b>									
Part time for economic reasons <sup>3</sup> .....	8,161	7,768	7,898	8,358	8,111	7,901	8,482	8,225	8,067
Slack work or business conditions.....	5,422	4,910	4,975	5,502	5,282	5,140	5,455	5,161	5,044
Could only find part-time work.....	2,473	2,613	2,685	2,518	2,559	2,508	2,597	2,634	2,661
Part time for noneconomic reasons <sup>4</sup> .....	18,950	19,058	19,043	17,941	18,543	18,656	18,405	18,559	18,291

1 Includes self-employed workers whose businesses are incorporated.

2 Refers to those who worked 1 to 34 hours during the survey reference week and excludes employed persons who were absent from their jobs for the entire week.

3 Refers to those who worked 1 to 34 hours during the reference week for an economic reason such as slack work or unfavorable business conditions, inability to find full-time work, or seasonal declines in demand.

4 Refers to persons who usually work part time for noneconomic reasons such as childcare problems, family or personal obligations, school or training, retirement or Social Security limits on earnings, and other reasons. This excludes persons who usually work full time but worked only 1 to 34 hours during the reference week for reasons such as vacations, holidays, illness, and bad weather.

- Data not available.

NOTE: Detail for the seasonally adjusted data shown in this table will not necessarily add to totals because of the independent seasonal adjustment of the various series. Updated population controls are introduced annually with the release of January data.

# HOUSEHOLD DATA

## Table A-9. Selected employment indicators

[Numbers in thousands]

Characteristic	Not seasonally adjusted			Seasonally adjusted					
	Nov. 2011	Oct. 2012	Nov. 2012	Nov. 2011	July 2012	Aug. 2012	Sept. 2012	Oct. 2012	Nov. 2012
<b>AGE AND SEX</b>									
Total, 16 years and over.....	141,070	144,039	143,549	140,614	142,220	142,101	142,974	143,384	143,262
16 to 19 years.....	4,177	4,306	4,252	4,416	4,546	4,344	4,425	4,473	4,479
16 to 17 years.....	1,368	1,459	1,290	1,413	1,540	1,392	1,433	1,463	1,348
18 to 19 years.....	2,809	2,848	2,963	2,995	3,012	2,983	2,989	3,052	3,145
20 years and over.....	136,893	139,732	139,297	136,198	137,674	137,756	138,550	138,910	138,782
20 to 24 years.....	13,225	13,535	13,624	13,200	13,364	13,114	13,482	13,534	13,596
25 years and over.....	123,668	126,197	125,672	122,973	124,203	124,600	125,017	125,363	125,181
25 to 54 years.....	94,322	95,089	94,523	93,708	93,957	94,001	94,378	94,422	94,063
25 to 34 years.....	30,992	31,161	31,183	30,743	30,527	30,508	30,768	30,893	30,942
35 to 44 years.....	30,423	30,892	30,652	30,222	30,474	30,580	30,663	30,708	30,498
45 to 54 years.....	32,907	33,036	32,688	32,743	32,956	32,912	32,947	32,821	32,622
55 years and over.....	29,346	31,108	31,149	29,264	30,247	30,599	30,639	30,942	31,119
Men, 16 years and over.....	75,157	76,498	76,142	74,975	75,466	75,161	75,752	76,055	75,968
16 to 19 years.....	1,974	2,082	2,021	2,129	2,238	2,074	2,155	2,187	2,172
16 to 17 years.....	594	684	593	654	666	605	646	719	653
18 to 19 years.....	1,380	1,398	1,428	1,465	1,577	1,511	1,510	1,474	1,506
20 years and over.....	73,183	74,416	74,121	72,846	73,227	73,086	73,597	73,868	73,796
20 to 24 years.....	6,967	7,081	7,147	6,980	6,921	6,760	6,963	7,082	7,126
25 years and over.....	66,216	67,335	66,975	65,853	66,285	66,368	66,625	66,822	66,698
25 to 54 years.....	50,701	50,817	50,429	50,368	50,256	50,147	50,360	50,383	50,171
25 to 34 years.....	17,080	16,937	16,903	16,895	16,555	16,487	16,579	16,702	16,718
35 to 44 years.....	16,497	16,661	16,488	16,370	16,488	16,512	16,560	16,559	16,384
45 to 54 years.....	17,124	17,219	17,037	17,102	17,214	17,148	17,221	17,122	17,068
55 years and over.....	15,515	16,518	16,546	15,485	16,029	16,221	16,265	16,439	16,527
Women, 16 years and over.....	65,913	67,540	67,407	65,639	66,754	66,940	67,222	67,329	67,293
16 to 19 years.....	2,203	2,224	2,232	2,287	2,308	2,270	2,270	2,286	2,307
16 to 17 years.....	774	775	697	759	873	788	787	744	694
18 to 19 years.....	1,429	1,450	1,535	1,530	1,434	1,472	1,479	1,578	1,639
20 years and over.....	63,710	65,316	65,175	63,352	64,446	64,670	64,952	65,043	64,987
20 to 24 years.....	6,258	6,454	6,478	6,220	6,444	6,354	6,519	6,452	6,470
25 years and over.....	57,452	58,862	58,698	57,119	57,918	58,232	58,391	58,541	58,484
25 to 54 years.....	43,622	44,272	44,094	43,340	43,700	43,854	44,017	44,039	43,892
25 to 34 years.....	13,912	14,224	14,280	13,848	13,972	14,021	14,189	14,191	14,224
35 to 44 years.....	13,926	14,231	14,164	13,852	13,986	14,068	14,102	14,149	14,114
45 to 54 years.....	15,783	15,816	15,651	15,641	15,743	15,764	15,726	15,699	15,554
55 years and over.....	13,830	14,590	14,603	13,779	14,218	14,378	14,374	14,503	14,592
<b>MARITAL STATUS</b>									
Married men, spouse present.....	44,159	44,484	44,293	43,933	43,715	43,879	43,984	44,114	44,036
Married women, spouse present.....	34,705	34,716	34,839	34,442	34,381	34,814	34,841	34,558	34,553
Women who maintain families.....	8,723	9,442	9,226	-	-	-	-	-	-
<b>FULL- OR PART-TIME STATUS</b>									
Full-time workers <sup>1</sup> .....	113,138	116,045	115,515	113,212	114,345	114,388	115,226	115,459	115,657
Part-time workers <sup>2</sup> .....	27,932	27,993	28,034	27,378	27,925	27,757	27,731	27,875	27,538
<b>MULTIPLE JOBHOLDERS</b>									
Total multiple jobholders.....	7,083	6,976	7,235	7,004	6,845	6,921	6,866	6,908	7,106
Percent of total employed.....	5.0	4.8	5.0	5.0	4.8	4.9	4.8	4.8	5.0
<b>SELF-EMPLOYMENT</b>									
Self-employed workers, incorporated.....	5,060	5,383	5,160	-	-	-	-	-	-
Self-employed workers, unincorporated.....	9,400	9,532	9,738	9,478	9,616	9,458	9,602	9,550	9,740

1 Employed full-time workers are persons who usually work 35 hours or more per week.

2 Employed part-time workers are persons who usually work less than 35 hours per week.

- Data not available.

NOTE: Detail for the seasonally adjusted data shown in this table will not necessarily add to totals because of the independent seasonal adjustment of the various series. Updated population controls are introduced annually with the release of January data.

# HOUSEHOLD DATA

## Table A-10. Selected unemployment indicators, seasonally adjusted

Characteristic	Number of unemployed persons (in thousands)			Unemployment rates					
	Nov. 2011	Oct. 2012	Nov. 2012	Nov. 2011	July 2012	Aug. 2012	Sept. 2012	Oct. 2012	Nov. 2012
<b>AGE AND SEX</b>									
Total, 16 years and over.....	13,323	12,258	12,029	8.7	8.3	8.1	7.8	7.9	7.7
16 to 19 years.....	1,370	1,386	1,376	23.7	23.8	24.6	23.7	23.7	23.5
16 to 17 years.....	428	490	538	23.3	26.6	29.3	25.3	25.1	28.5
18 to 19 years.....	917	894	802	23.4	22.2	22.7	22.8	22.7	20.3
20 years and over.....	11,953	10,872	10,653	8.1	7.6	7.5	7.2	7.3	7.1
20 to 24 years.....	2,190	2,055	1,971	14.2	13.5	13.9	12.4	13.2	12.7
25 years and over.....	9,740	8,877	8,672	7.3	6.9	6.8	6.6	6.6	6.5
25 to 54 years.....	7,719	6,975	6,747	7.6	7.2	7.1	6.8	6.9	6.7
25 to 34 years.....	3,108	2,799	2,648	9.2	8.2	8.3	8.1	8.3	7.9
35 to 44 years.....	2,268	2,055	2,019	7.0	6.9	6.6	6.3	6.3	6.2
45 to 54 years.....	2,343	2,121	2,080	6.7	6.5	6.4	6.1	6.1	6.0
55 years and over.....	1,991	1,920	1,906	6.4	6.2	5.9	5.9	5.8	5.8
Men, 16 years and over.....	7,366	6,642	6,527	8.9	8.4	8.3	8.0	8.0	7.9
16 to 19 years.....	772	802	784	26.6	26.4	28.6	27.2	26.8	26.5
16 to 17 years.....	239	284	305	26.7	30.0	36.5	30.1	28.3	31.8
18 to 19 years.....	533	529	471	26.7	24.5	25.5	25.6	26.4	23.8
20 years and over.....	6,594	5,840	5,743	8.3	7.7	7.6	7.3	7.3	7.2
20 to 24 years.....	1,292	1,147	1,044	15.6	15.2	15.2	13.7	13.9	12.8
25 years and over.....	5,300	4,765	4,704	7.4	6.8	6.8	6.7	6.7	6.6
25 to 54 years.....	4,187	3,701	3,607	7.7	7.0	7.0	6.8	6.8	6.7
25 to 34 years.....	1,705	1,499	1,429	9.2	7.8	8.3	8.0	8.2	7.9
35 to 44 years.....	1,237	1,056	1,065	7.0	6.6	6.4	6.1	6.0	6.1
45 to 54 years.....	1,245	1,146	1,113	6.8	6.4	6.5	6.1	6.3	6.1
55 years and over.....	1,113	1,064	1,097	6.7	6.5	6.1	6.4	6.1	6.2
Women, 16 years and over.....	5,957	5,616	5,502	8.3	8.1	7.8	7.5	7.7	7.6
16 to 19 years.....	598	584	592	20.7	21.2	20.5	20.2	20.3	20.4
16 to 17 years.....	190	206	232	20.0	23.9	22.5	20.9	21.7	25.1
18 to 19 years.....	384	364	331	20.1	19.6	19.7	19.7	18.8	16.8
20 years and over.....	5,359	5,032	4,911	7.8	7.5	7.3	7.0	7.2	7.0
20 to 24 years.....	898	909	926	12.6	11.7	12.5	11.0	12.3	12.5
25 years and over.....	4,440	4,112	3,968	7.2	7.1	6.7	6.5	6.6	6.4
25 to 54 years.....	3,532	3,274	3,140	7.5	7.4	7.1	6.9	6.9	6.7
25 to 34 years.....	1,403	1,299	1,219	9.2	8.6	8.3	8.2	8.4	7.9
35 to 44 years.....	1,031	999	954	6.9	7.2	6.9	6.4	6.6	6.3
45 to 54 years.....	1,098	975	967	6.6	6.6	6.3	6.0	5.8	5.9
55 years and over <sup>1</sup> .....	847	842	773	5.8	6.6	6.2	5.6	5.5	5.0
<b>MARITAL STATUS</b>									
Married men, spouse present.....	2,461	2,150	2,195	5.3	5.0	4.9	4.7	4.6	4.7
Married women, spouse present.....	1,937	1,857	1,826	5.3	5.7	5.2	5.0	5.1	5.0
Women who maintain families <sup>1</sup> .....	1,230	1,231	1,103	12.4	11.7	12.3	11.3	11.5	10.7
<b>FULL- OR PART-TIME STATUS</b>									
Full-time workers <sup>2</sup> .....	11,520	10,432	10,139	9.2	8.7	8.6	8.3	8.3	8.1
Part-time workers <sup>3</sup> .....	1,754	1,841	1,812	6.0	6.5	6.0	5.8	6.2	6.2

1 Not seasonally adjusted.

2 Full-time workers are unemployed persons who have expressed a desire to work full time (35 hours or more per week) or are on layoff from full-time jobs.

3 Part-time workers are unemployed persons who have expressed a desire to work part time (less than 35 hours per week) or are on layoff from part-time jobs.

NOTE: Detail for the seasonally adjusted data shown in this table will not necessarily add to totals because of the independent seasonal adjustment of the various series. Updated population controls are introduced annually with the release of January data.

# HOUSEHOLD DATA

## Table A-11. Unemployed persons by reason for unemployment

[Numbers in thousands]

Reason	Not seasonally adjusted			Seasonally adjusted					
	Nov. 2011	Oct. 2012	Nov. 2012	Nov. 2011	July 2012	Aug. 2012	Sept. 2012	Oct. 2012	Nov. 2012
<b>NUMBER OF UNEMPLOYED</b>									
Job losers and persons who completed temporary jobs.....	7,201	6,125	6,069	7,599	7,123	7,003	6,535	6,575	6,413
On temporary layoff.....	955	741	877	1,181	1,417	1,246	1,169	1,080	1,077
Not on temporary layoff.....	6,246	5,383	5,193	6,418	5,705	5,757	5,366	5,495	5,337
Permanent job losers.....	4,878	4,212	4,003	5,033	4,387	4,484	4,311	4,302	4,146
Persons who completed temporary jobs.....	1,367	1,171	1,190	1,385	1,319	1,273	1,055	1,193	1,191
Job leavers.....	1,000	1,065	913	1,005	878	942	957	1,010	922
Reentrants.....	3,248	3,295	3,199	3,355	3,380	3,318	3,306	3,300	3,295
New entrants.....	1,164	1,255	1,223	1,276	1,311	1,277	1,247	1,301	1,327
<b>PERCENT DISTRIBUTION</b>									
Job losers and persons who completed temporary jobs.....	57.1	52.2	53.2	57.4	56.1	55.8	54.3	54.0	53.6
On temporary layoff.....	7.6	6.3	7.7	8.9	11.2	9.9	9.7	8.9	9.0
Not on temporary layoff.....	49.5	45.9	45.5	48.5	45.0	45.9	44.5	45.1	44.6
Job leavers.....	7.9	9.1	8.0	7.6	6.9	7.5	7.9	8.3	7.7
Reentrants.....	25.8	28.1	28.1	25.3	26.6	26.5	27.4	27.1	27.6
New entrants.....	9.2	10.7	10.7	9.6	10.3	10.2	10.4	10.7	11.1
<b>UNEMPLOYED AS A PERCENT OF THE CIVILIAN LABOR FORCE</b>									
Job losers and persons who completed temporary jobs.....	4.7	3.9	3.9	4.9	4.6	4.5	4.2	4.2	4.1
Job leavers.....	0.7	0.7	0.6	0.7	0.6	0.6	0.6	0.6	0.6
Reentrants.....	2.1	2.1	2.1	2.2	2.2	2.1	2.1	2.1	2.1
New entrants.....	0.8	0.8	0.8	0.8	0.8	0.8	0.8	0.8	0.9

NOTE: Updated population controls are introduced annually with the release of January data.

**HOUSEHOLD DATA**

**Table A-12. Unemployed persons by duration of unemployment**

[Numbers in thousands]

Duration	Not seasonally adjusted			Seasonally adjusted					
	Nov. 2011	Oct. 2012	Nov. 2012	Nov. 2011	July 2012	Aug. 2012	Sept. 2012	Oct. 2012	Nov. 2012
<b>NUMBER OF UNEMPLOYED</b>									
Less than 5 weeks.....	2,297	2,413	2,340	2,510	2,711	2,844	2,542	2,632	2,577
5 to 14 weeks.....	2,766	2,647	2,634	2,896	3,092	2,868	2,826	2,851	2,747
15 weeks and over.....	7,551	6,680	6,431	7,766	6,945	6,878	6,703	6,839	6,605
15 to 26 weeks.....	1,933	1,766	1,724	2,087	1,760	1,845	1,860	1,836	1,819
27 weeks and over.....	5,618	4,915	4,707	5,680	5,185	5,033	4,844	5,002	4,786
Average (mean) duration, in weeks <sup>1</sup> .....	41.1	40.9	40.1	40.9	38.8	39.2	39.8	40.2	40.0
Median duration, in weeks.....	21.8	20.3	19.5	21.5	16.7	18.0	18.5	19.6	19.0
<b>PERCENT DISTRIBUTION</b>									
Less than 5 weeks.....	18.2	20.6	20.5	19.1	21.3	22.6	21.1	21.4	21.6
5 to 14 weeks.....	21.9	22.5	23.1	22.0	24.3	22.8	23.4	23.1	23.0
15 weeks and over.....	59.9	56.9	56.4	59.0	54.5	54.6	55.5	55.5	55.4
15 to 26 weeks.....	15.3	15.0	15.1	15.8	13.8	14.7	15.4	14.9	15.2
27 weeks and over.....	44.5	41.9	41.3	43.1	40.7	40.0	40.1	40.6	40.1

<sup>1</sup> Beginning in January 2011, this series reflects a change to the collection of data on unemployment duration. For more information, see [www.bls.gov/cps/duration.htm](http://www.bls.gov/cps/duration.htm).

NOTE: Updated population controls are introduced annually with the release of January data.



**HOUSEHOLD DATA**

**Table A-13. Employed and unemployed persons by occupation, not seasonally adjusted**

[Numbers in thousands]

Occupation	Employed		Unemployed		Unemployment rates	
	Nov. 2011	Nov. 2012	Nov. 2011	Nov. 2012	Nov. 2011	Nov. 2012
Total, 16 years and over <sup>1</sup> .....	141,070	143,549	12,613	11,404	8.2	7.4
Management, professional, and related occupations.....	52,787	54,951	2,336	2,077	4.2	3.6
Management, business, and financial operations occupations.....	21,776	22,643	1,060	905	4.6	3.8
Professional and related occupations.....	31,011	32,308	1,277	1,171	4.0	3.5
Service occupations.....	24,783	25,137	2,610	2,352	9.5	8.6
Sales and office occupations.....	33,294	33,370	2,965	2,584	8.2	7.2
Sales and related occupations.....	15,607	15,632	1,323	1,236	7.8	7.3
Office and administrative support occupations.....	17,687	17,738	1,641	1,348	8.5	7.1
Natural resources, construction, and maintenance occupations.....	13,422	12,986	1,662	1,516	11.0	10.5
Farming, fishing, and forestry occupations.....	1,011	906	189	166	15.8	15.5
Construction and extraction occupations.....	7,440	7,178	1,151	1,066	13.4	12.9
Installation, maintenance, and repair occupations.....	4,970	4,902	321	284	6.1	5.5
Production, transportation, and material moving occupations.....	16,785	17,106	1,823	1,625	9.8	8.7
Production occupations.....	8,310	8,567	872	736	9.5	7.9
Transportation and material moving occupations.....	8,475	8,539	951	889	10.1	9.4

<sup>1</sup> Persons with no previous work experience and persons whose last job was in the U.S. Armed Forces are included in the unemployed total.

NOTE: Updated population controls are introduced annually with the release of January data.

**HOUSEHOLD DATA**

**Table A-14. Unemployed persons by industry and class of worker, not seasonally adjusted**

Industry and class of worker	Number of unemployed persons (in thousands)		Unemployment rates	
	Nov. 2011	Nov. 2012	Nov. 2011	Nov. 2012
Total, 16 years and over <sup>1</sup> .....	12,613	11,404	8.2	7.4
Nonagricultural private wage and salary workers.....	9,740	8,600	8.2	7.1
Mining, quarrying, and oil and gas extraction.....	76	53	8.3	5.6
Construction.....	1,100	988	13.1	12.2
Manufacturing.....	1,176	982	7.7	6.4
Durable goods.....	749	640	7.9	6.6
Nondurable goods.....	427	341	7.3	6.1
Wholesale and retail trade.....	1,726	1,454	8.4	7.1
Transportation and utilities.....	423	398	7.2	6.6
Information.....	225	187	7.4	6.8
Financial activities.....	557	432	6.1	4.7
Professional and business services.....	1,340	1,197	9.0	7.9
Education and health services.....	1,132	1,176	5.2	5.2
Leisure and hospitality.....	1,451	1,354	11.1	10.3
Other services.....	535	381	8.4	5.7
Agriculture and related private wage and salary workers.....	222	193	14.9	13.6
Government workers.....	964	825	4.5	3.8
Self-employed workers, unincorporated, and unpaid family workers.....	523	563	5.2	5.4

<sup>1</sup> Persons with no previous work experience and persons whose last job was in the U.S. Armed Forces are included in the unemployed total.

NOTE: Updated population controls are introduced annually with the release of January data.

**HOUSEHOLD DATA**

**Table A-15. Alternative measures of labor underutilization**

[Percent]

Measure	Not seasonally adjusted			Seasonally adjusted					
	Nov. 2011	Oct. 2012	Nov. 2012	Nov. 2011	July 2012	Aug. 2012	Sept. 2012	Oct. 2012	Nov. 2012
U-1 Persons unemployed 15 weeks or longer, as a percent of the civilian labor force.....	4.9	4.3	4.2	5.0	4.5	4.4	4.3	4.4	4.3
U-2 Job losers and persons who completed temporary jobs, as a percent of the civilian labor force.....	4.7	3.9	3.9	4.9	4.6	4.5	4.2	4.2	4.1
U-3 Total unemployed, as a percent of the civilian labor force (official unemployment rate).....	8.2	7.5	7.4	8.7	8.3	8.1	7.8	7.9	7.7
U-4 Total unemployed plus discouraged workers, as a percent of the civilian labor force plus discouraged workers.....	8.9	8.0	7.9	9.3	8.8	8.6	8.3	8.4	8.3
U-5 Total unemployed, plus discouraged workers, plus all other persons marginally attached to the labor force, as a percent of the civilian labor force plus all persons marginally attached to the labor force.....	9.7	9.0	8.8	10.2	9.7	9.6	9.3	9.3	9.2
U-6 Total unemployed, plus all persons marginally attached to the labor force, plus total employed part time for economic reasons, as a percent of the civilian labor force plus all persons marginally attached to the labor force.....	15.0	13.9	13.9	15.6	15.0	14.7	14.7	14.6	14.4

NOTE: Persons marginally attached to the labor force are those who currently are neither working nor looking for work but indicate that they want and are available for a job and have looked for work sometime in the past 12 months. Discouraged workers, a subset of the marginally attached, have given a job-market related reason for not currently looking for work. Persons employed part time for economic reasons are those who want and are available for full-time work but have had to settle for a part-time schedule. Updated population controls are introduced annually with the release of January data.

**HOUSEHOLD DATA**

**Table A-16. Persons not in the labor force and multiple jobholders by sex, not seasonally adjusted**

[Numbers in thousands]

Category	Total		Men		Women	
	Nov. 2011	Nov. 2012	Nov. 2011	Nov. 2012	Nov. 2011	Nov. 2012
<b>NOT IN THE LABOR FORCE</b>						
Total not in the labor force.....	86,757	89,221	34,674	35,501	52,083	53,720
Persons who currently want a job.....	6,183	6,495	2,915	3,028	3,268	3,467
Marginally attached to the labor force <sup>1</sup> .....	2,591	2,505	1,355	1,267	1,236	1,238
Discouraged workers <sup>2</sup> .....	1,096	979	679	556	416	422
Other persons marginally attached to the labor force <sup>3</sup> .....	1,495	1,526	676	711	819	816
<b>MULTIPLE JOBHOLDERS</b>						
Total multiple jobholders <sup>4</sup> .....	7,083	7,235	3,505	3,572	3,578	3,663
Percent of total employed.....	5.0	5.0	4.7	4.7	5.4	5.4
Primary job full time, secondary job part time.....	3,712	3,752	2,105	2,014	1,607	1,738
Primary and secondary jobs both part time.....	1,854	2,037	573	715	1,281	1,322
Primary and secondary jobs both full time.....	219	218	137	128	82	90
Hours vary on primary or secondary job.....	1,262	1,172	671	678	591	494

1 Data refer to persons who want a job, have searched for work during the prior 12 months, and were available to take a job during the reference week, but had not looked for work in the past 4 weeks.

2 Includes those who did not actively look for work in the prior 4 weeks for reasons such as thinks no work available, could not find work, lacks schooling or training, employer thinks too young or old, and other types of discrimination.

3 Includes those who did not actively look for work in the prior 4 weeks for such reasons as school or family responsibilities, ill health, and transportation problems, as well as a number for whom reason for nonparticipation was not determined.

4 Includes a small number of persons who work part time on their primary job and full time on their secondary job(s), not shown separately.

NOTE: Updated population controls are introduced annually with the release of January data.

**ESTABLISHMENT DATA**

**Table B-1. Employees on nonfarm payrolls by industry sector and selected industry detail**

[In thousands]

Industry	Not seasonally adjusted				Seasonally adjusted				Change from: Oct.2012 - Nov.2012 <sup>P</sup>
	Nov. 2011	Sept. 2012	Oct. 2012 <sup>P</sup>	Nov. 2012 <sup>P</sup>	Nov. 2011	Sept. 2012	Oct. 2012 <sup>P</sup>	Nov. 2012 <sup>P</sup>	
Total nonfarm.....	133,172	133,866	134,702	135,069	131,963	133,568	133,706	133,852	146
Total private.....	110,692	112,021	112,378	112,631	109,959	111,554	111,743	111,890	147
Goods-producing.....	18,271	18,649	18,616	18,443	18,114	18,305	18,323	18,301	-22
Mining and logging.....	820	848	839	835	814	835	828	833	5
Logging.....	49.7	52.6	52.0	51.2	48.7	49.9	49.8	50.0	0.2
Mining.....	769.9	795.3	786.9	784.0	764.9	785.3	778.6	782.8	4.2
Oil and gas extraction.....	183.2	196.0	195.5	195.9	183.2	195.6	195.8	196.3	0.5
Mining, except oil and gas <sup>1</sup> .....	221.6	222.0	219.0	216.3	219.1	215.9	214.4	215.0	0.6
Coal mining.....	87.1	81.2	79.3	79.9	86.9	81.1	79.8	80.5	0.7
Support activities for mining.....	365.1	377.3	372.4	371.8	362.6	373.8	368.4	371.5	3.1
Construction.....	5,644	5,770	5,770	5,641	5,520	5,519	5,534	5,514	-20
Construction of buildings.....	1,247.5	1,256.5	1,262.8	1,239.2	1,226.9	1,218.0	1,222.1	1,211.0	-11.1
Residential building.....	577.6	582.2	578.0	572.2	568.5	561.6	559.6	552.8	-6.8
Nonresidential building.....	669.9	674.3	684.8	667.0	658.4	656.4	662.5	658.2	-4.3
Heavy and civil engineering construction.....	867.1	912.5	910.4	871.8	834.2	842.9	843.9	840.1	-3.8
Specialty trade contractors.....	3,529.8	3,600.8	3,597.0	3,530.1	3,458.5	3,457.8	3,467.8	3,463.2	-4.6
Residential specialty trade contractors.....	1,479.2	1,526.8	1,527.3	1,499.0	1,453.4	1,465.4	1,470.9	1,474.1	3.2
Nonresidential specialty trade contractors.....	2,050.6	2,074.0	2,069.7	2,031.1	2,005.1	1,992.4	1,996.9	1,989.1	-7.8
Manufacturing.....	11,807	12,031	12,007	11,967	11,780	11,951	11,961	11,954	-7
Durable goods.....	7,344	7,493	7,490	7,490	7,331	7,472	7,479	7,490	11
Wood products.....	331.7	333.0	333.4	335.0	331.4	328.7	332.2	335.5	3.3
Nonmetallic mineral products.....	368.9	366.8	367.6	365.5	364.2	358.9	360.6	361.8	1.2
Primary metals.....	400.1	406.5	406.9	404.7	399.6	405.0	405.9	404.2	-1.7
Fabricated metal products.....	1,361.0	1,411.3	1,410.8	1,409.5	1,359.4	1,407.0	1,408.1	1,412.6	4.5
Machinery.....	1,075.9	1,100.9	1,101.0	1,099.6	1,076.0	1,103.6	1,102.1	1,101.6	-0.5
Computer and electronic products <sup>1</sup> .....	1,108.7	1,097.9	1,099.6	1,095.4	1,107.1	1,099.1	1,100.1	1,096.4	-3.7
Computer and peripheral equipment.....	161.8	164.2	164.0	164.4	161.1	164.8	164.5	164.2	-0.3
Communications equipment.....	113.2	108.1	107.0	106.7	113.1	107.8	107.0	106.7	-0.3
Semiconductors and electronic components.....	387.4	384.3	385.2	381.6	387.0	384.4	384.8	382.5	-2.3
Electronic instruments.....	401.3	397.1	398.2	397.9	401.1	397.7	399.0	399.1	0.1
Electrical equipment and appliances.....	367.7	372.3	372.1	372.1	367.3	372.0	372.7	374.0	1.3
Transportation equipment <sup>1</sup> .....	1,408.3	1,472.0	1,469.0	1,479.5	1,405.1	1,468.8	1,469.7	1,478.2	8.5
Motor vehicles and parts <sup>2</sup> .....	732.8	780.6	775.9	786.7	730.2	778.4	775.9	785.6	9.7
Furniture and related products.....	347.9	351.9	349.1	346.3	349.8	348.8	348.3	348.0	-0.3
Miscellaneous manufacturing.....	573.7	580.8	580.5	582.0	571.0	579.6	579.2	577.9	-1.3
Nondurable goods.....	4,463	4,538	4,517	4,477	4,449	4,479	4,482	4,464	-18
Food manufacturing.....	1,454.9	1,506.7	1,492.6	1,467.0	1,446.0	1,468.7	1,467.8	1,455.5	-12.3
Beverages and tobacco products.....	192.4	207.8	205.6	202.1	191.7	200.0	201.1	202.3	1.2
Textile mills.....	119.1	119.9	117.7	118.6	119.2	119.3	118.2	118.7	0.5
Textile product mills.....	115.7	113.3	114.1	113.6	115.2	113.1	113.6	113.4	-0.2
Apparel.....	150.9	147.9	147.2	147.1	151.2	146.5	146.6	146.4	-0.2
Leather and allied products.....	30.4	29.4	29.0	29.3	30.3	29.1	28.8	28.9	0.1
Paper and paper products.....	392.1	390.4	387.9	386.4	391.4	388.9	387.8	386.4	-1.4
Printing and related support activities.....	462.6	451.8	453.1	454.5	460.7	450.4	451.8	452.4	0.6
Petroleum and coal products.....	114.4	116.6	119.1	118.0	113.5	114.6	115.7	116.6	0.9
Chemicals.....	791.4	801.2	800.3	789.0	791.0	799.1	800.8	791.7	-9.1
Plastics and rubber products.....	638.7	653.4	650.6	651.4	638.6	648.8	649.8	651.4	1.6
Private service-providing.....	92,421	93,372	93,762	94,188	91,845	93,249	93,420	93,589	169
Trade, transportation, and utilities.....	25,591	25,346	25,529	26,029	25,154	25,411	25,478	25,547	69
Wholesale trade.....	5,573.9	5,642.3	5,667.9	5,677.8	5,554.1	5,645.6	5,653.6	5,666.7	13.1
Durable goods.....	2,767.2	2,799.2	2,802.6	2,804.7	2,761.9	2,798.5	2,797.4	2,802.1	4.7
Nondurable goods.....	1,960.3	1,978.6	1,996.0	2,002.5	1,948.9	1,981.2	1,988.6	1,994.4	5.8
Electronic markets and agents and brokers.....	846.4	864.5	869.3	870.6	843.3	865.9	867.6	870.2	2.6
Retail trade.....	15,083.5	14,705.5	14,850.7	15,316.2	14,724.7	14,804.9	14,855.8	14,908.4	52.6
Motor vehicle and parts dealers <sup>1</sup> .....	1,704.1	1,736.7	1,737.9	1,733.9	1,705.6	1,724.9	1,730.9	1,734.2	3.3
Automobile dealers.....	1,068.3	1,096.2	1,098.4	1,095.3	1,069.0	1,090.8	1,094.1	1,094.4	0.3
Furniture and home furnishings stores.....	463.1	447.0	461.2	471.0	446.8	452.0	453.3	452.6	-0.7

See footnotes at end of table.

**ESTABLISHMENT DATA**

**Table B-1. Employees on nonfarm payrolls by industry sector and selected industry detail**

— Continued

[In thousands]

Industry	Not seasonally adjusted				Seasonally adjusted				Change from: Oct.2012 - Nov.2012 <sup>P</sup>
	Nov. 2011	Sept. 2012	Oct. 2012 <sup>P</sup>	Nov. 2012 <sup>P</sup>	Nov. 2011	Sept. 2012	Oct. 2012 <sup>P</sup>	Nov. 2012 <sup>P</sup>	
<b>Retail trade - Continued</b>									
Electronics and appliance stores.....	539.6	488.6	496.5	530.9	515.8	497.9	497.7	506.8	9.1
Building material and garden supply stores...	1,118.2	1,139.2	1,132.1	1,129.7	1,142.8	1,153.7	1,155.0	1,158.6	3.6
Food and beverage stores.....	2,861.6	2,881.9	2,893.5	2,924.3	2,839.1	2,886.5	2,891.0	2,897.7	6.7
Health and personal care stores.....	996.7	999.6	1,015.5	1,026.5	987.0	1,005.5	1,016.7	1,017.1	0.4
Gasoline stations.....	832.6	836.9	833.6	836.4	833.3	831.3	832.2	834.4	2.2
Clothing and clothing accessories stores.....	1,469.6	1,375.0	1,415.4	1,581.5	1,375.2	1,404.7	1,419.2	1,452.5	33.3
Sporting goods, hobby, book, and music stores.....	600.4	569.2	567.7	603.6	565.1	565.2	567.8	566.5	-1.3
General merchandise stores <sup>1</sup> .....	3,261.0	3,002.0	3,048.5	3,231.4	3,118.3	3,060.6	3,068.6	3,078.2	9.6
Department stores.....	1,671.1	1,466.5	1,490.4	1,620.4	1,570.1	1,510.7	1,512.1	1,514.0	1.9
Miscellaneous store retailers.....	774.7	795.2	801.8	781.6	760.6	786.4	788.2	775.0	-13.2
Nonstore retailers.....	461.9	434.2	447.0	465.4	435.1	436.2	435.2	434.8	-0.4
Transportation and warehousing.....	4,375.9	4,433.2	4,445.4	4,470.9	4,316.7	4,394.3	4,403.5	4,407.0	3.5
Air transportation.....	454.7	455.3	452.1	447.4	455.8	453.5	452.0	448.1	-3.9
Rail transportation.....	232.0	230.5	232.2	232.5	231.2	230.8	231.7	231.3	-0.4
Water transportation.....	62.2	68.3	68.1	67.4	63.1	67.2	67.7	68.4	0.7
Truck transportation.....	1,324.0	1,371.7	1,373.9	1,368.7	1,311.1	1,351.2	1,355.9	1,358.4	2.5
Transit and ground passenger transportation.....	449.0	455.1	463.0	463.1	431.4	442.6	444.1	445.0	0.9
Pipeline transportation.....	43.3	44.3	44.1	44.4	43.2	44.3	44.2	44.4	0.2
Scenic and sightseeing transportation.....	25.9	36.5	31.4	27.6	29.7	31.1	30.5	30.7	0.2
Support activities for transportation.....	576.8	583.4	591.1	585.6	574.5	584.5	587.3	583.0	-4.3
Couriers and messengers.....	547.4	521.0	515.1	549.1	528.3	524.9	522.8	525.4	2.6
Warehousing and storage.....	660.6	667.1	674.4	685.1	648.4	664.2	667.3	672.3	5.0
Utilities.....	557.4	564.7	564.6	563.7	558.2	565.7	565.2	565.2	0.0
Information.....	2,656	2,615	2,615	2,649	2,644	2,626	2,621	2,633	12
Publishing industries, except Internet.....	748.7	739.1	738.9	736.3	745.8	738.4	736.6	733.6	-3.0
Motion picture and sound recording industries.....	364.0	361.9	357.1	386.1	359.5	369.3	365.0	379.6	14.6
Broadcasting, except Internet.....	281.4	280.1	279.2	281.2	279.0	279.1	278.4	278.9	0.5
Telecommunications.....	852.0	824.7	828.0	833.3	850.3	828.5	829.0	829.3	0.3
Data processing, hosting and related services.....	244.6	239.4	239.9	240.5	244.1	240.2	240.2	239.6	-0.6
Other information services.....	165.1	170.0	171.6	171.7	165.1	170.6	171.4	172.1	0.7
Financial activities.....	7,690	7,763	7,770	7,764	7,691	7,759	7,764	7,765	1
Finance and insurance.....	5,757.4	5,787.9	5,803.1	5,816.5	5,750.7	5,798.7	5,804.1	5,809.2	5.1
Monetary authorities - central bank.....	19.2	19.2	19.4	19.5	19.2	19.2	19.3	19.3	0.0
Credit intermediation and related activities <sup>1</sup> .....	2,566.5	2,598.8	2,603.0	2,611.0	2,563.4	2,603.6	2,605.6	2,607.2	1.6
Depository credit intermediation <sup>1</sup> .....	1,741.6	1,744.4	1,746.2	1,747.2	1,742.0	1,749.6	1,749.8	1,750.4	0.6
Commercial banking.....	1,316.0	1,314.4	1,315.6	1,314.9	1,316.9	1,318.5	1,318.2	1,318.4	0.2
Securities, commodity contracts, investments.....	806.3	800.2	806.2	808.4	805.1	802.2	804.8	804.8	0.0
Insurance carriers and related activities.....	2,281.4	2,285.8	2,290.2	2,294.1	2,278.9	2,289.5	2,290.3	2,294.3	4.0
Funds, trusts, and other financial vehicles.....	84.0	83.9	84.3	83.5	84.1	84.2	84.1	83.6	-0.5
Real estate and rental and leasing.....	1,933.0	1,974.9	1,966.7	1,947.6	1,940.6	1,960.0	1,960.3	1,955.3	-5.0
Real estate.....	1,405.2	1,428.7	1,422.8	1,412.0	1,408.9	1,420.1	1,418.1	1,414.5	-3.6
Rental and leasing services.....	503.5	523.0	520.8	512.4	507.4	516.7	519.2	517.9	-1.3
Lessors of nonfinancial intangible assets.....	24.3	23.2	23.1	23.2	24.3	23.2	23.0	22.9	-0.1
Professional and business services.....	17,676	18,033	18,171	18,181	17,521	17,956	18,011	18,054	43
Professional and technical services <sup>1</sup> .....	7,777.6	7,901.1	7,966.5	7,989.8	7,787.1	7,982.2	8,001.6	8,016.9	15.3
Legal services.....	1,117.9	1,114.7	1,122.9	1,123.7	1,116.7	1,121.3	1,122.3	1,122.5	0.2
Accounting and bookkeeping services.....	890.0	873.3	880.4	897.6	943.6	952.7	955.1	956.4	1.3
Architectural and engineering services.....	1,307.3	1,336.0	1,336.6	1,335.2	1,301.9	1,328.2	1,329.3	1,331.7	2.4
Computer systems design and related services.....	1,563.4	1,613.7	1,630.9	1,635.9	1,553.1	1,617.2	1,623.9	1,631.0	7.1
Management and technical consulting services.....	1,105.3	1,148.5	1,162.5	1,160.5	1,092.7	1,147.4	1,151.8	1,151.8	0.0
Management of companies and enterprises.....	1,929.1	1,955.3	1,957.0	1,965.4	1,928.3	1,955.0	1,958.0	1,963.1	5.1
Administrative and waste services.....	7,969.5	8,176.3	8,247.9	8,225.5	7,806.0	8,018.4	8,051.0	8,074.3	23.3

See footnotes at end of table.

**ESTABLISHMENT DATA**

**Table B-1. Employees on nonfarm payrolls by industry sector and selected industry detail**

— Continued

[In thousands]

Industry	Not seasonally adjusted				Seasonally adjusted				Change from: Oct.2012 - Nov.2012 <sup>P</sup>
	Nov. 2011	Sept. 2012	Oct. 2012 <sup>P</sup>	Nov. 2012 <sup>P</sup>	Nov. 2011	Sept. 2012	Oct. 2012 <sup>P</sup>	Nov. 2012 <sup>P</sup>	
Administrative and waste services - Continued									
Administrative and support services <sup>1</sup> .....	7,601.7	7,801.9	7,873.8	7,853.9	7,439.1	7,647.3	7,679.6	7,701.9	22.3
Employment services <sup>1</sup> .....	3,137.6	3,270.8	3,327.7	3,323.1	3,014.1	3,187.3	3,205.7	3,209.5	3.8
Temporary help services .....	2,491.2	2,597.3	2,647.2	2,657.0	2,377.6	2,528.5	2,542.4	2,560.4	18.0
Business support services .....	830.6	821.2	840.0	855.6	814.4	827.9	832.0	836.7	4.7
Services to buildings and dwellings .....	1,798.5	1,849.4	1,841.4	1,809.3	1,784.1	1,784.0	1,793.2	1,800.0	6.8
Waste management and remediation services .....	367.8	374.4	374.1	371.6	366.9	371.1	371.4	372.4	1.0
Education and health services .....	20,290	20,328	20,607	20,684	20,046	20,410	20,434	20,452	18
Educational services .....	3,460.5	3,280.8	3,470.6	3,500.9	3,275.3	3,342.6	3,328.8	3,325.1	-3.7
Health care and social assistance .....	16,829.1	17,046.7	17,135.9	17,182.8	16,770.8	17,067.0	17,105.2	17,127.2	22.0
Health care <sup>3</sup> .....	14,195.0	14,413.9	14,474.6	14,504.5	14,162.2	14,421.2	14,455.3	14,475.3	20.0
Ambulatory health care services <sup>1</sup> .....	6,243.7	6,385.5	6,433.4	6,435.6	6,222.8	6,387.0	6,413.9	6,418.6	4.7
Offices of physicians .....	2,395.5	2,434.5	2,458.0	2,462.1	2,386.6	2,438.0	2,450.6	2,452.3	1.7
Outpatient care centers .....	637.5	668.3	674.6	672.1	635.8	670.8	673.1	673.2	0.1
Home health care services .....	1,159.8	1,209.3	1,219.3	1,218.7	1,154.3	1,206.2	1,214.4	1,214.7	0.3
Hospitals .....	4,770.8	4,829.6	4,838.7	4,852.2	4,765.2	4,832.6	4,839.1	4,847.4	8.3
Nursing and residential care facilities <sup>1</sup> .....	3,180.5	3,198.8	3,202.5	3,216.7	3,174.2	3,201.6	3,202.3	3,209.3	7.0
Nursing care facilities .....	1,666.0	1,660.2	1,659.0	1,669.0	1,661.0	1,660.2	1,659.3	1,663.8	4.5
Social assistance <sup>1</sup> .....	2,634.1	2,632.8	2,661.3	2,678.3	2,608.6	2,645.8	2,649.9	2,651.9	2.0
Child day care services .....	857.0	843.2	855.5	852.1	839.5	840.8	841.9	835.7	-6.2
Leisure and hospitality .....	13,179	13,903	13,677	13,492	13,436	13,698	13,718	13,741	23
Arts, entertainment, and recreation .....	1,761.6	1,988.1	1,888.7	1,804.4	1,910.7	1,927.9	1,931.1	1,945.2	14.1
Performing arts and spectator sports .....	382.7	423.5	410.3	396.5	397.9	406.9	406.3	406.9	0.6
Museums, historical sites, and similar institutions .....	129.0	136.7	134.9	131.9	134.3	135.0	135.4	136.7	1.3
Amusements, gambling, and recreation .....	1,249.9	1,427.9	1,343.5	1,276.0	1,378.5	1,386.0	1,389.4	1,401.6	12.2
Accommodation and food services .....	11,417.4	11,914.7	11,787.9	11,687.7	11,525.4	11,769.9	11,786.4	11,795.4	9.0
Accommodation .....	1,745.7	1,851.8	1,799.1	1,754.5	1,799.9	1,806.7	1,808.6	1,809.0	0.4
Food services and drinking places .....	9,671.7	10,062.9	9,988.8	9,933.2	9,725.5	9,963.2	9,977.8	9,986.4	8.6
Other services .....	5,339	5,384	5,393	5,389	5,353	5,389	5,394	5,397	3
Repair and maintenance .....	1,162.0	1,167.9	1,169.2	1,163.0	1,166.0	1,162.8	1,166.0	1,164.2	-1.8
Personal and laundry services .....	1,284.5	1,302.9	1,305.0	1,307.4	1,288.6	1,302.6	1,307.4	1,309.0	1.6
Membership associations and organizations .....	2,892.9	2,912.9	2,918.9	2,919.0	2,898.7	2,923.4	2,920.5	2,923.7	3.2
Government .....	22,480	21,845	22,324	22,438	22,004	22,014	21,963	21,962	-1
Federal .....	2,830.0	2,813.0	2,805.0	2,788.0	2,839.0	2,810.0	2,804.0	2,799.0	-5.0
Federal, except U.S. Postal Service .....	2,211.0	2,211.0	2,193.1	2,187.4	2,218.3	2,203.3	2,197.0	2,196.8	-0.2
U.S. Postal Service .....	618.5	601.8	611.7	600.1	620.3	606.5	606.5	602.5	-4.0
State government .....	5,233.0	5,104.0	5,225.0	5,253.0	5,056.0	5,088.0	5,073.0	5,079.0	6.0
State government education .....	2,570.9	2,462.3	2,594.7	2,621.0	2,383.0	2,445.1	2,432.7	2,437.1	4.4
State government, excluding education .....	2,662.1	2,641.4	2,629.8	2,632.4	2,673.2	2,643.3	2,640.6	2,642.1	1.5
Local government .....	14,417.0	13,928.0	14,294.0	14,397.0	14,109.0	14,116.0	14,086.0	14,084.0	-2.0
Local government education .....	8,210.7	7,679.4	8,074.3	8,174.8	7,858.1	7,865.8	7,829.6	7,826.5	-3.1
Local government, excluding education .....	6,206.0	6,248.8	6,219.5	6,222.3	6,251.2	6,250.4	6,256.3	6,257.7	1.4

1 Includes other industries, not shown separately.

2 Includes motor vehicles, motor vehicle bodies and trailers, and motor vehicle parts.

3 Includes ambulatory health care services, hospitals, and nursing and residential care facilities.

p Preliminary

**ESTABLISHMENT DATA**

**Table B-2. Average weekly hours and overtime of all employees on private nonfarm payrolls by industry sector, seasonally adjusted**

Industry	Nov. 2011	Sept. 2012	Oct. 2012 <sup>p</sup>	Nov. 2012 <sup>p</sup>
<b>AVERAGE WEEKLY HOURS</b>				
Total private.....	34.4	34.5	34.4	34.4
Goods-producing.....	39.9	40.2	40.1	40.2
Mining and logging.....	44.3	43.6	43.5	43.4
Construction.....	38.1	38.8	38.7	38.8
Manufacturing.....	40.4	40.6	40.5	40.6
Durable goods.....	40.8	40.9	40.8	40.9
Nondurable goods.....	39.9	40.1	40.0	40.1
Private service-providing.....	33.3	33.3	33.2	33.3
Trade, transportation, and utilities.....	34.6	34.5	34.4	34.6
Wholesale trade.....	38.8	38.7	38.6	38.7
Retail trade.....	31.7	31.5	31.4	31.6
Transportation and warehousing.....	38.4	38.2	38.3	38.4
Utilities.....	41.7	41.9	41.6	42.2
Information.....	36.8	36.5	36.3	36.5
Financial activities.....	37.4	37.4	37.2	37.3
Professional and business services.....	35.8	36.0	35.8	36.0
Education and health services.....	32.8	32.9	32.9	32.8
Leisure and hospitality.....	26.1	26.1	26.0	26.0
Other services.....	31.7	31.5	31.5	31.5
<b>AVERAGE OVERTIME HOURS</b>				
Manufacturing.....	3.3	3.2	3.2	3.2
Durable goods.....	3.3	3.1	3.2	3.2
Nondurable goods.....	3.2	3.3	3.3	3.3

p Preliminary



**ESTABLISHMENT DATA**

**Table B-3. Average hourly and weekly earnings of all employees on private nonfarm payrolls by industry sector, seasonally adjusted**

Industry	Average hourly earnings				Average weekly earnings			
	Nov. 2011	Sept. 2012	Oct. 2012 <sup>P</sup>	Nov. 2012 <sup>P</sup>	Nov. 2011	Sept. 2012	Oct. 2012 <sup>P</sup>	Nov. 2012 <sup>P</sup>
Total private.....	\$23.23	\$23.60	\$23.59	\$23.63	\$ 799.11	\$ 814.20	\$ 811.50	\$ 812.87
Goods-producing.....	24.48	24.82	24.77	24.84	976.75	997.76	993.28	998.57
Mining and logging.....	28.24	29.00	28.78	28.87	1,251.03	1,264.40	1,251.93	1,252.96
Construction.....	25.43	25.87	25.86	25.96	968.88	1,003.76	1,000.78	1,007.25
Manufacturing.....	23.78	24.05	23.99	24.04	960.71	976.43	971.60	976.02
Durable goods.....	25.26	25.46	25.38	25.42	1,030.61	1,041.31	1,035.50	1,039.68
Nondurable goods.....	21.28	21.65	21.63	21.68	849.07	868.17	865.20	869.37
Private service-providing.....	22.93	23.30	23.31	23.35	763.57	775.89	773.89	777.56
Trade, transportation, and utilities.....	20.20	20.56	20.58	20.60	698.92	709.32	707.95	712.76
Wholesale trade.....	26.53	26.92	27.01	27.03	1,029.36	1,041.80	1,042.59	1,046.06
Retail trade.....	16.01	16.38	16.40	16.40	507.52	515.97	514.96	518.24
Transportation and warehousing.....	21.89	21.93	21.91	21.91	840.58	837.73	839.15	841.34
Utilities.....	33.74	34.62	34.21	35.29	1,406.96	1,450.58	1,423.14	1,489.24
Information.....	31.53	31.75	31.68	31.74	1,160.30	1,158.88	1,149.98	1,158.51
Financial activities.....	28.27	29.39	29.45	29.51	1,057.30	1,099.19	1,095.54	1,100.72
Professional and business services.....	27.95	28.16	28.12	28.16	1,000.61	1,013.76	1,006.70	1,013.76
Education and health services.....	23.89	24.27	24.32	24.38	783.59	798.48	800.13	799.66
Leisure and hospitality.....	13.31	13.40	13.38	13.38	347.39	349.74	347.88	347.88
Other services.....	20.61	20.84	20.86	20.85	653.34	656.46	657.09	656.78

p Preliminary

**ESTABLISHMENT DATA**

**Table B-4. Indexes of aggregate weekly hours and payrolls for all employees on private nonfarm payrolls by industry sector, seasonally adjusted**

[2007=100]

Industry	Index of aggregate weekly hours <sup>1</sup>					Index of aggregate weekly payrolls <sup>2</sup>				
	Nov. 2011	Sept. 2012	Oct. 2012 <sup>p</sup>	Nov. 2012 <sup>p</sup>	Percent change from: Oct. 2012 - Nov. 2012 <sup>p</sup>	Nov. 2011	Sept. 2012	Oct. 2012 <sup>p</sup>	Nov. 2012 <sup>p</sup>	Percent change from: Oct. 2012 - Nov. 2012 <sup>p</sup>
Total private.....	94.8	96.4	96.3	96.5	0.2	105.0	108.5	108.4	108.7	0.3
Goods-producing.....	82.3	83.8	83.7	83.8	0.1	91.1	94.0	93.7	94.1	0.4
Mining and logging.....	113.3	114.4	113.2	113.6	0.4	128.5	133.2	130.8	131.7	0.7
Construction.....	72.5	73.8	73.8	73.7	-0.1	80.1	83.0	83.0	83.2	0.2
Manufacturing.....	85.6	87.3	87.1	87.3	0.2	94.7	97.6	97.2	97.6	0.4
Durable goods.....	84.2	86.0	85.9	86.2	0.3	94.5	97.3	96.8	97.4	0.6
Nondurable goods.....	88.6	89.6	89.5	89.3	-0.2	95.7	98.5	98.2	98.3	0.1
Private service-providing.....	98.2	99.7	99.6	100.1	0.5	109.1	112.6	112.5	113.2	0.6
Trade, transportation, and utilities.....	94.7	95.3	95.3	96.1	0.8	102.9	105.5	105.6	106.6	0.9
Wholesale trade.....	94.0	95.3	95.2	95.7	0.5	104.1	107.1	107.3	107.9	0.6
Retail trade.....	94.8	94.7	94.8	95.7	0.9	100.4	102.6	102.7	103.8	1.1
Transportation and warehousing.....	94.9	96.1	96.5	96.9	0.4	105.4	106.9	107.3	107.7	0.4
Utilities.....	100.7	102.6	101.7	103.2	1.5	112.3	117.3	115.0	120.3	4.6
Information.....	88.9	87.5	86.9	87.8	1.0	99.8	99.0	98.0	99.2	1.2
Financial activities.....	94.8	95.6	95.2	95.4	0.2	104.6	109.7	109.4	109.9	0.5
Professional and business services.....	98.7	101.7	101.4	102.2	0.8	111.7	116.0	115.5	116.6	1.0
Education and health services.....	107.0	109.3	109.4	109.2	-0.2	119.8	124.3	124.7	124.7	0.0
Leisure and hospitality.....	100.1	102.0	101.8	101.9	0.1	107.4	110.3	109.9	110.0	0.1
Other services.....	94.0	94.1	94.1	94.2	0.1	110.0	111.2	111.4	111.5	0.1

1 The indexes of aggregate weekly hours are calculated by dividing the current month's estimates of aggregate hours by the corresponding 2007 annual average aggregate hours. Aggregate hours estimates are the product of estimates of average weekly hours and employment.

2 The indexes of aggregate weekly payrolls are calculated by dividing the current month's estimates of aggregate weekly payrolls by the corresponding 2007 annual average aggregate weekly payrolls. Aggregate payrolls estimates are the product of estimates of average hourly earnings, average weekly hours, and employment.

p Preliminary

**ESTABLISHMENT DATA**

**Table B-5. Employment of women on nonfarm payrolls by industry sector, seasonally adjusted**

Industry	Women employees (in thousands)				Percent of all employees			
	Nov. 2011	Sept. 2012	Oct. 2012 <sup>P</sup>	Nov. 2012 <sup>P</sup>	Nov. 2011	Sept. 2012	Oct. 2012 <sup>P</sup>	Nov. 2012 <sup>P</sup>
Total nonfarm.....	65,199	65,883	65,961	66,052	49.4	49.3	49.3	49.3
Total private.....	52,619	53,349	53,441	53,530	47.9	47.8	47.8	47.8
Goods-producing.....	4,045	4,093	4,094	4,097	22.3	22.4	22.3	22.4
Mining and logging.....	108	113	113	114	13.3	13.5	13.6	13.7
Construction.....	707	717	716	717	12.8	13.0	12.9	13.0
Manufacturing.....	3,230	3,263	3,265	3,266	27.4	27.3	27.3	27.3
Durable goods.....	1,709	1,727	1,729	1,728	23.3	23.1	23.1	23.1
Nondurable goods.....	1,521	1,536	1,536	1,538	34.2	34.3	34.3	34.5
Private service-providing.....	48,574	49,256	49,347	49,433	52.9	52.8	52.8	52.8
Trade, transportation, and utilities.....	10,031	10,089	10,134	10,161	39.9	39.7	39.8	39.8
Wholesale trade.....	1,674.3	1,694.2	1,698.9	1,698.6	30.1	30.0	30.0	30.0
Retail trade.....	7,213.5	7,233.9	7,271.6	7,297.6	49.0	48.9	48.9	48.9
Transportation and warehousing.....	1,007.4	1,020.4	1,022.2	1,022.2	23.3	23.2	23.2	23.2
Utilities.....	136.0	140.6	141.2	142.1	24.4	24.9	25.0	25.1
Information.....	1,071	1,053	1,054	1,055	40.5	40.1	40.2	40.1
Financial activities.....	4,473	4,504	4,504	4,510	58.2	58.0	58.0	58.1
Professional and business services.....	7,784	7,960	7,964	7,979	44.4	44.3	44.2	44.2
Education and health services.....	15,383	15,666	15,686	15,707	76.7	76.8	76.8	76.8
Leisure and hospitality.....	7,013	7,140	7,156	7,174	52.2	52.1	52.2	52.2
Other services.....	2,819	2,844	2,849	2,847	52.7	52.8	52.8	52.8
Government.....	12,580	12,534	12,520	12,522	57.2	56.9	57.0	57.0

p Preliminary

NOTE: Data in this table have been corrected. For more information see [http://www.bls.gov/bls/ceswomen\\_usps\\_correction.htm](http://www.bls.gov/bls/ceswomen_usps_correction.htm).

**ESTABLISHMENT DATA**

**Table B-6. Employment of production and nonsupervisory employees on private nonfarm payrolls by industry sector, seasonally adjusted<sup>1</sup>**

[In thousands]

Industry	Nov. 2011	Sept. 2012	Oct. 2012 <sup>p</sup>	Nov. 2012 <sup>p</sup>
Total private.....	90,745	92,179	92,343	92,442
Goods-producing.....	13,047	13,159	13,177	13,144
Mining and logging.....	614	628	624	624
Construction.....	4,165	4,130	4,144	4,132
Manufacturing.....	8,268	8,401	8,409	8,388
Durable goods.....	5,035	5,145	5,149	5,152
Nondurable goods.....	3,233	3,256	3,260	3,236
Private service-providing.....	77,698	79,020	79,166	79,298
Trade, transportation, and utilities.....	21,343	21,565	21,625	21,674
Wholesale trade.....	4,459.0	4,548.6	4,555.9	4,567.5
Retail trade.....	12,714.8	12,758.0	12,798.0	12,829.1
Transportation and warehousing.....	3,724.4	3,806.2	3,819.4	3,825.7
Utilities.....	444.7	451.7	451.7	451.8
Information.....	2,124	2,127	2,124	2,134
Financial activities.....	5,896	5,974	5,977	5,976
Professional and business services.....	14,421	14,877	14,922	14,954
Education and health services.....	17,569	17,886	17,900	17,923
Leisure and hospitality.....	11,857	12,090	12,112	12,129
Other services.....	4,488	4,501	4,506	4,508

<sup>1</sup> Data relate to production employees in mining and logging and manufacturing, construction employees in construction, and nonsupervisory employees in the service-providing industries. These groups account for approximately four-fifths of the total employment on private nonfarm payrolls.

<sup>p</sup> Preliminary

**ESTABLISHMENT DATA**

**Table B-7. Average weekly hours and overtime of production and nonsupervisory employees on private nonfarm payrolls by industry sector, seasonally adjusted<sup>1</sup>**

Industry	Nov. 2011	Sept. 2012	Oct. 2012 <sup>p</sup>	Nov. 2012 <sup>p</sup>
<b>AVERAGE WEEKLY HOURS</b>				
Total private.....	33.7	33.7	33.6	33.7
Goods-producing.....	40.9	41.1	41.0	41.1
Mining and logging.....	47.0	46.0	45.7	45.4
Construction.....	38.9	39.3	39.4	39.4
Manufacturing.....	41.5	41.5	41.5	41.6
Durable goods.....	41.9	41.8	41.8	42.0
Nondurable goods.....	40.8	41.1	41.0	41.1
Private service-providing.....	32.5	32.4	32.4	32.5
Trade, transportation, and utilities.....	33.8	33.7	33.6	33.9
Wholesale trade.....	38.6	38.7	38.5	38.7
Retail trade.....	30.6	30.4	30.3	30.6
Transportation and warehousing.....	37.8	37.9	38.0	38.1
Utilities.....	41.7	41.1	40.7	41.5
Information.....	36.2	35.8	35.6	36.0
Financial activities.....	36.5	36.8	36.8	36.8
Professional and business services.....	35.2	35.3	35.1	35.2
Education and health services.....	32.4	32.3	32.3	32.3
Leisure and hospitality.....	24.8	24.9	24.9	24.8
Other services.....	30.7	30.5	30.5	30.5
<b>AVERAGE OVERTIME HOURS</b>				
Manufacturing.....	4.1	4.2	4.1	4.1
Durable goods.....	4.2	4.2	4.1	4.1
Nondurable goods.....	4.0	4.1	4.1	4.2

<sup>1</sup> Data relate to production employees in mining and logging and manufacturing, construction employees in construction, and nonsupervisory employees in the service-providing industries. These groups account for approximately four-fifths of the total employment on private nonfarm payrolls.

p Preliminary

**ESTABLISHMENT DATA**

**Table B-8. Average hourly and weekly earnings of production and nonsupervisory employees on private nonfarm payrolls by industry sector, seasonally adjusted<sup>1</sup>**

Industry	Average hourly earnings				Average weekly earnings			
	Nov. 2011	Sept. 2012	Oct. 2012 <sup>p</sup>	Nov. 2012 <sup>p</sup>	Nov. 2011	Sept. 2012	Oct. 2012 <sup>p</sup>	Nov. 2012 <sup>p</sup>
Total private.....	\$19.59	\$19.80	\$19.81	\$19.84	\$ 660.18	\$ 667.26	\$ 665.62	\$ 668.61
Goods-producing.....	20.73	20.95	21.00	21.03	847.86	861.05	861.00	864.33
Mining and logging.....	24.87	25.78	25.96	26.04	1,168.89	1,185.88	1,186.37	1,182.22
Construction.....	23.68	24.00	24.05	24.10	921.15	943.20	947.57	949.54
Manufacturing.....	18.98	19.13	19.17	19.20	787.67	793.90	795.56	798.72
Durable goods.....	20.15	20.22	20.22	20.24	844.29	845.20	845.20	850.08
Nondurable goods.....	17.11	17.37	17.48	17.50	698.09	713.91	716.68	719.25
Private service-providing.....	19.35	19.56	19.56	19.58	628.88	633.74	633.74	636.35
Trade, transportation, and utilities.....	17.27	17.45	17.45	17.48	583.73	588.07	586.32	592.57
Wholesale trade.....	22.00	22.23	22.21	22.26	849.20	860.30	855.09	861.46
Retail trade.....	13.70	13.83	13.85	13.85	419.22	420.43	419.66	423.81
Transportation and warehousing.....	19.55	19.49	19.47	19.47	738.99	738.67	739.86	741.81
Utilities.....	31.15	31.96	31.85	32.83	1,298.96	1,313.56	1,296.30	1,362.45
Information.....	26.76	27.16	27.02	26.97	968.71	972.33	961.91	970.92
Financial activities.....	22.20	22.91	23.03	23.19	810.30	843.09	847.50	853.39
Professional and business services.....	23.21	23.37	23.32	23.32	816.99	824.96	818.53	820.86
Education and health services.....	20.98	21.11	21.11	21.13	679.75	681.85	681.85	682.50
Leisure and hospitality.....	11.48	11.63	11.64	11.63	284.70	289.59	289.84	288.42
Other services.....	17.39	17.51	17.53	17.53	533.87	534.06	534.67	534.67

<sup>1</sup> Data relate to production employees in mining and logging and manufacturing, construction employees in construction, and nonsupervisory employees in the service-providing industries. These groups account for approximately four-fifths of the total employment on private nonfarm payrolls.

p Preliminary

**ESTABLISHMENT DATA**

**Table B-9. Indexes of aggregate weekly hours and payrolls for production and nonsupervisory employees on private nonfarm payrolls by industry sector, seasonally adjusted<sup>1</sup>**

[2002=100]

Industry	Index of aggregate weekly hours <sup>2</sup>					Index of aggregate weekly payrolls <sup>3</sup>				
	Nov. 2011	Sept. 2012	Oct. 2012 <sup>P</sup>	Nov. 2012 <sup>P</sup>	Percent change from: Oct. 2012 - Nov. 2012 <sup>P</sup>	Nov. 2011	Sept. 2012	Oct. 2012 <sup>P</sup>	Nov. 2012 <sup>P</sup>	Percent change from: Oct. 2012 - Nov. 2012 <sup>P</sup>
Total private.....	102.2	103.8	103.7	104.1	0.4	133.7	137.3	137.2	138.0	0.6
Goods-producing.....	81.5	82.6	82.6	82.6	0.0	103.5	106.0	106.2	106.3	0.1
Mining and logging.....	153.4	153.5	151.5	150.5	-0.7	221.8	230.2	228.8	228.0	-0.3
Construction.....	81.1	81.3	81.8	81.5	-0.4	103.7	105.3	106.2	106.1	-0.1
Manufacturing.....	78.8	80.0	80.1	80.1	0.0	97.8	100.1	100.4	100.6	0.2
Durable goods.....	79.3	80.8	80.9	81.3	0.5	99.7	102.0	102.1	102.8	0.7
Nondurable goods.....	77.7	78.8	78.8	78.4	-0.5	94.0	96.8	97.3	96.9	-0.4
Private service-providing.....	108.0	109.5	109.7	110.2	0.5	143.2	146.8	147.1	147.9	0.5
Trade, transportation, and utilities.....	100.6	101.3	101.3	102.4	1.1	123.9	126.1	126.1	127.7	1.3
Wholesale trade.....	101.4	103.7	103.3	104.1	0.8	131.4	135.8	135.1	136.5	1.0
Retail trade.....	98.5	98.2	98.2	99.4	1.2	115.6	116.4	116.5	118.0	1.3
Transportation and warehousing.....	106.0	108.6	109.3	109.7	0.4	131.4	134.3	134.9	135.5	0.4
Utilities.....	94.8	94.9	94.0	95.9	2.0	123.3	126.7	125.0	131.4	5.1
Information.....	87.8	86.9	86.3	87.7	1.6	116.3	116.9	115.4	117.1	1.5
Financial activities.....	103.0	105.2	105.3	105.2	-0.1	141.4	149.0	149.9	150.9	0.7
Professional and business services.....	113.8	117.7	117.4	118.0	0.5	157.1	163.7	162.9	163.7	0.5
Education and health services.....	122.8	124.6	124.7	124.9	0.2	169.4	172.9	173.1	173.5	0.2
Leisure and hospitality.....	107.7	110.3	110.5	110.2	-0.3	140.4	145.6	146.0	145.5	-0.3
Other services.....	96.6	96.3	96.4	96.4	0.0	122.4	122.8	123.1	123.2	0.1

1 Data relate to production employees in mining and logging and manufacturing, construction employees in construction, and nonsupervisory employees in the service-providing industries. These groups account for approximately four-fifths of the total employment on private nonfarm payrolls.

2 The indexes of aggregate weekly hours are calculated by dividing the current month's estimates of aggregate hours by the corresponding 2002 annual average aggregate hours. Aggregate hours estimates are the product of estimates of average weekly hours and employment.

3 The indexes of aggregate weekly payrolls are calculated by dividing the current month's estimates of aggregate weekly payrolls by the corresponding 2002 annual average aggregate weekly payrolls. Aggregate payrolls estimates are the product of estimates of average hourly earnings, average weekly hours, and employment.

p Preliminary