

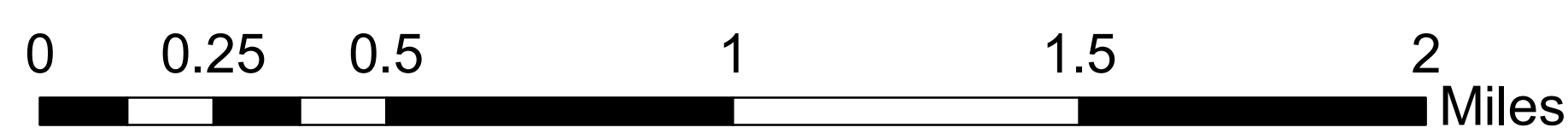
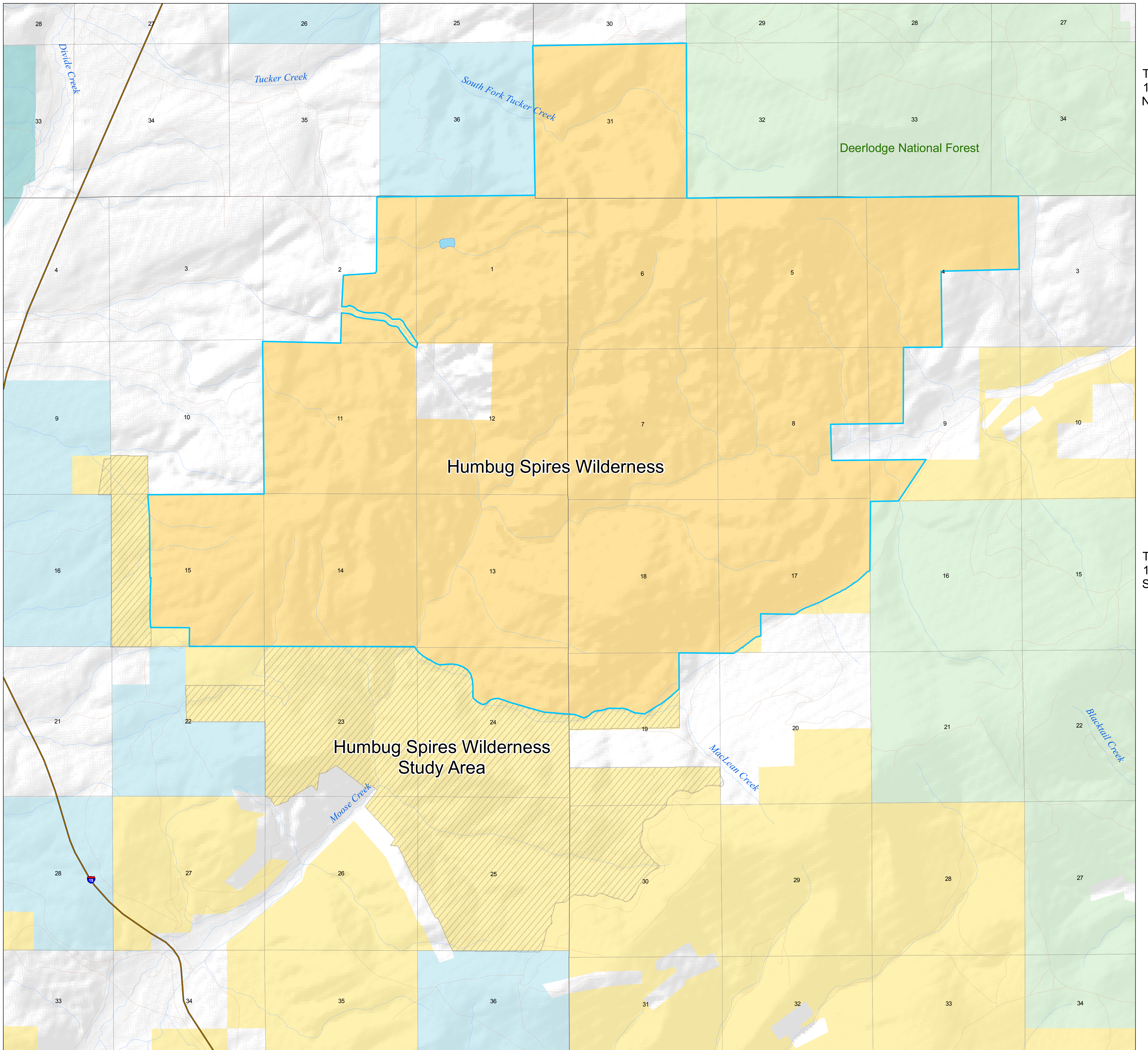
Humbug Spires Wilderness

July 27, 2010

This map prepared at the request of Senator Jon Tester

R 9 W

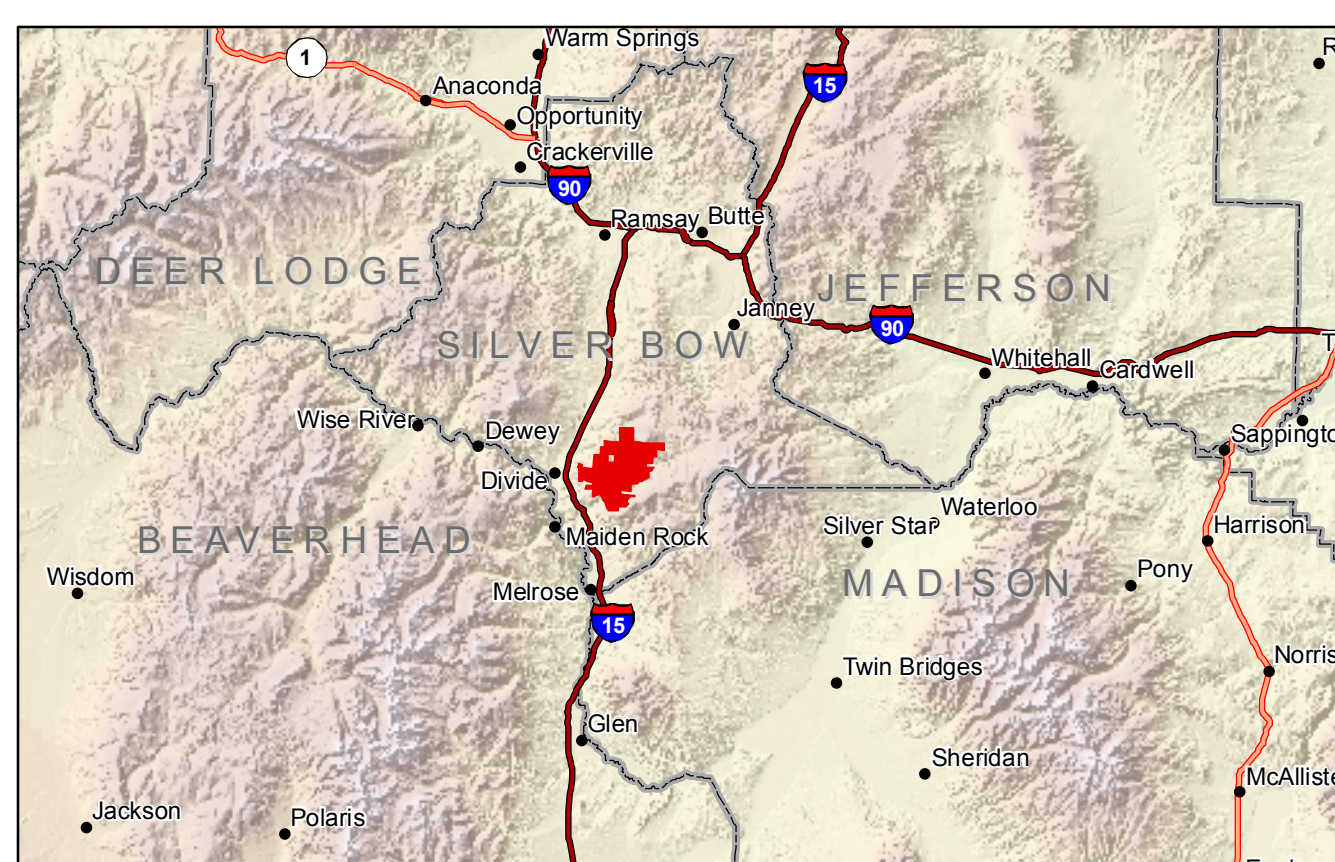
R 8 W



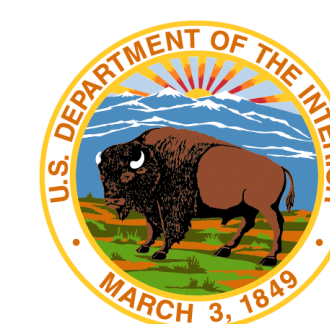
1:15,000

This map intended to be plotted at 34" x 44".

- BLM Wilderness
- Proposed WSA Release
- Bureau of Land Management (BLM)
- National Forest Lands (USFS)
- Private Lands
- State Fish, Wildlife and Parks
- State Lands
- Water
- Interstate
- Local Roads
- Streams



No warranty is made by the BLM as to the accuracy, reliability, or completeness of this data for individual use or aggregate use with other data.



Bureau of Land Management
Montana State Office
Billings, Montana