

2. PROJECT TITLE
 UNACCOMPANIED ENLISTED PERSONNEL HOUSING (UEPH)

Box 6 Mar 87

P NO P-624

COG. SYMBOL AND FED. STOCK NO. OR OTHER SOURCE	ITEM/EQUIPMENT DESCRIPTION	QUAN. TITY	UNIT OF ISSUE	UNIT PRICE	TOTAL COST
<u>BUILT-IN EQUIPMENT TO BE MCON FUNDED</u>	*Heating, ventilating and air-conditioning systems *Telephone, fire alarm, TV and intercom systems *Drinking water coolers *Venetian blinds & window screens *Wardrobes		SYS SYS EA EA EA		
*Equipment with associated installation costs.					
<i>1105-00-687-9250</i> PERSONNEL SUPPORT EQPT.	<i>Mirror - 41" x 33"</i> 2 PERSON ROOM (624)	624	Ea	<i>52.75</i>	
<i>7105-00-840-8900</i>	<i>Double Dresser</i>	654	Ea	237.95	
GSA 7105-00-935-3270	Bed, bunk (king size)	1,310	EA	148.75	194,863 X
GSA 7105-00-543-7912	Bed, bunk conversion unit	780	SE	14.00	7332.00 10,920 X
OP	Bedspread (2 per man)	2,620	EA	17.23	45,143
OP	Bookcase	1,310	EA	75.00	98,250
OP	Chair, desk	1,310	EA	89.00	116,590
FP 7105-01-012-9123	Desk/Storage unit, w/lamp	1,310	EA	300.00	431,691.40 393,000 X
OP	Drapery and hardware	654	PR	92.00	60,168
OP	Lamp, bed, clamp-on	1,310	EA	17.34 16.00	20,960 X
OP	Lamp, table <i>floor lamp</i>	654	EA	61.47 33.00	21,582 X
GSA 7210-00-139-6424	Mattress	1,310	EA	84.00 79.00	110,040.00 103,490 X
FP 7110-FPI-3503	Panel, head and footboard	1,310	EA	27.00	35,370
GSA 7210-00-753-6228	Pillow	1,310	EA	9.00	11,790
OP	Table <i>night table</i>	654	EA	75.00	49,050
OP	Tackboard	1,310	EA	35.00	45,850
GSA 7520-00-285-5416	Wastebasket	1,248	EA	3.00	3,744
OP	Wastebasket, bathroom	320	EA	13.50	4,320
OP	Lounge chair	624	EA	29.00	
	1 PERSON ROOM (84)	1310			
	<i>mattresses, reg. bunk.</i>	88	Ea	84.00	
GSA 7105-00-935-3270	Bed, bunk (king size)	88	EA	148.75	13,090 X
GSA-7105-00-543-7912	Bed, bunk conversion unit	50	SE	14.00	450.00 700 X
OP	Bedspread (2 per man)	176	EA	17.23	3,032
OP	Bookcase/Storage Unit	88	EA	190.00	16,720
OP	Table, coffee	88	EA	153.00	7009.20 13,464 X
OP	Chair, desk	88	EA	89.00	7,832
OP	Chair, easy	176	EA	229.00	40,304
FP 7105-01-012-9123	Desk/Storage unit, w/lamp	88	EA	300.00	26,400 X
OP	Drapery and hardware	88	EA	92.00	8,096
OP	Lamp, bed, clamp on	88	EA	17.34 35.00	1525.92 3,080 X
OP	Lamp, table	88	EA	50.86 45.00	4475.68 3,960 X
OP	Lamp, floor	88	EA	61.47 50.00	5409.36 4,400 X
OP	Picture	88	EA	50.00	4,400
GSA 7210-00-753-6228	Pillow	88	EA	9.00	792
OP	Refrigerator, small, 2.5 cu ft	88	EA	205.00	14528.80 16,040 X
OP	Rug 9'x10'6"	88	EA	212.48	18,698
<i>7105-00-840-8901</i>	<i>Dresser (Dresser 45-00F-6846)</i>	88	Ea	162.50	
<i>7105-00-687-9518</i>	<i>Mirror</i>	88	Ea	38.50	

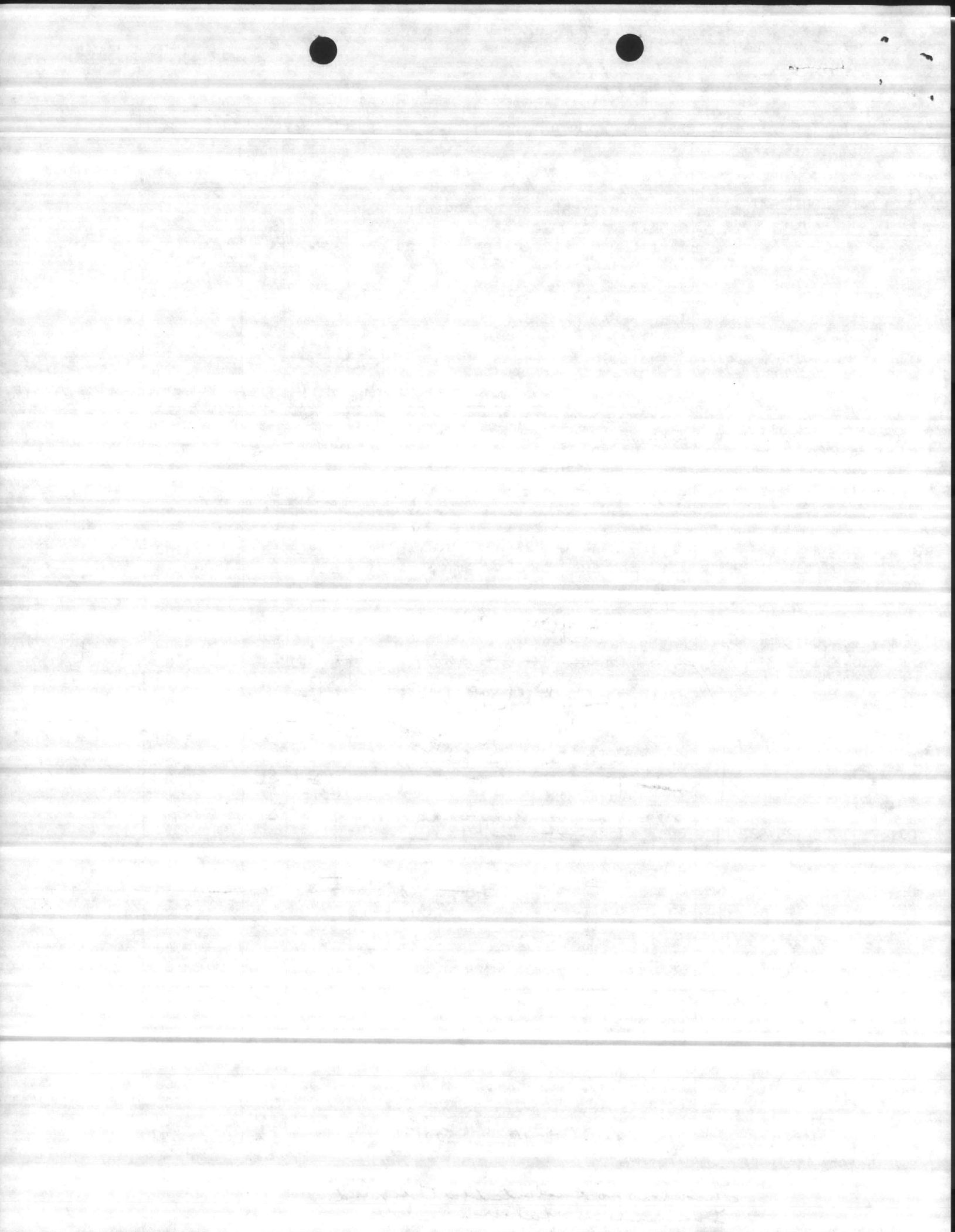
KLN Steel
1/2" 00F 685-28 - Model # Fe-80
NT 75-1W m

AD
3 door chest
no chest
3 chairs
omit

same as
Desk/Storage

dresser
need
mattresses

The item is included as it is required.
Don't order future.



1. ACTIVITY (Name and Location)

MARINE CORPS BASE, CAMP LEJEUNE, NORTH CAROLINA 28542

2. PROJECT TITLE

UNACCOMPANIED ENLISTED PERSONNEL HOUSING (UEPH)

P NO
P-624

COG. SYMBOL AND FED. STOCK NO. OR OTHER SOURCE	ITEM/EQUIPMENT DESCRIPTION	QUAN- TITY	UNIT OF ISSUE	UNIT PRICE	TOTAL COST
	<u>1 PERSON ROOM (84) (continued)</u>				
OP	Table, occasional <i>end</i>	88	EA	65.70	5781.60
OP	Table, night	88	EA	109.25	9614.00
GSA 7520-00-285-5416	Wastebasket	88	EA	3.00	264
OP	Wastebasket, bathroom	44	EA	13.50	594
	<u>1 PERSON/2 ROOMS (60 RMS)</u>				
	<u>BEDROOM</u>				
OP	Bed, <i>full req, bunk</i>	32	EA	100.00 148.75	4760.00
OP	Bedsread (2 per man)	64	EA	17.23	1,103
GSA 7210-00-753-6228	Pillow	64	EA	9.00	576
OP	Table, night	32	EA	109.25	3496.00
OP	Lamp, table	32	EA	50.86	1627.52
FP 7105-01-012-9123	Desk/Storage unit w/lamp	32	EA	329.54	10545.28
OP	Chair, desk	32	EA	89.00	2,848
FP	Chest, wardrobe w/mirror	32	EA	201.07	6432.00
OP	Recliner	32	EA	150.00	4,800
OP	Ottoman	32	EA	75.00	2,400
OP	Lamp, floor	32	EA	61.47	1967.04
OP	Rug, 9'x10'6"	32	EA	212.48	6,799
OP	Drapery and hardware	32	EA	92.00	2,944
OP	Picture	96	EA	50.00	4,800
GSA 7520-00-285-5416	Wastebasket	32	EA	3.00	96
OP	Wastebasket, bathroom	32	EA	13.50	432
	<u>LIVING ROOM</u>				
OP	Bed, sofa	32	EA	423.00	21056.00
GSA 7210-00-753-6228	Pillow	64	EA	9.00	576
OP	Bookcase	32	EA	190.00	6,080
OP	Table, end	64	EA	100.00	4204.80
OP	Table, coffee	32	EA	153.00	2548.80
OP	Table, TV	32	EA	60.00	1,920
OP	Chair, <i>lounge</i>	32	EA	229.00	7,328
OP	Refrigerator	32	EA	160.12	5283.20
OP	Lamp, table	64	EA	50.86	3255.04
OP	Lamp, <i>floor</i>	32	EA	61.50	1,600
OP	Rug, 9'x10'6"	32	EA	212.48	6,799
OP	Drapery and hardware	32	EA	72.00	2,304
OP	Picture	96	EA	50.00	4,800
OP	Wastebasket	32	EA	4.00	128
	<u>LOUNGE, TV ROOM (6)</u>				
OP	Chair, lounge	164	EA	144.12	23,636
OP	Lamp, floor	64	EA	61.47	3934.08

(See over)

Lounge (TV Room)

Dart Board

Ping Pong Table

Pool Table

" " Accs.

Lounge chairs

TV 25"

Wall mount.

1 ACTIVITY (Name and Location)

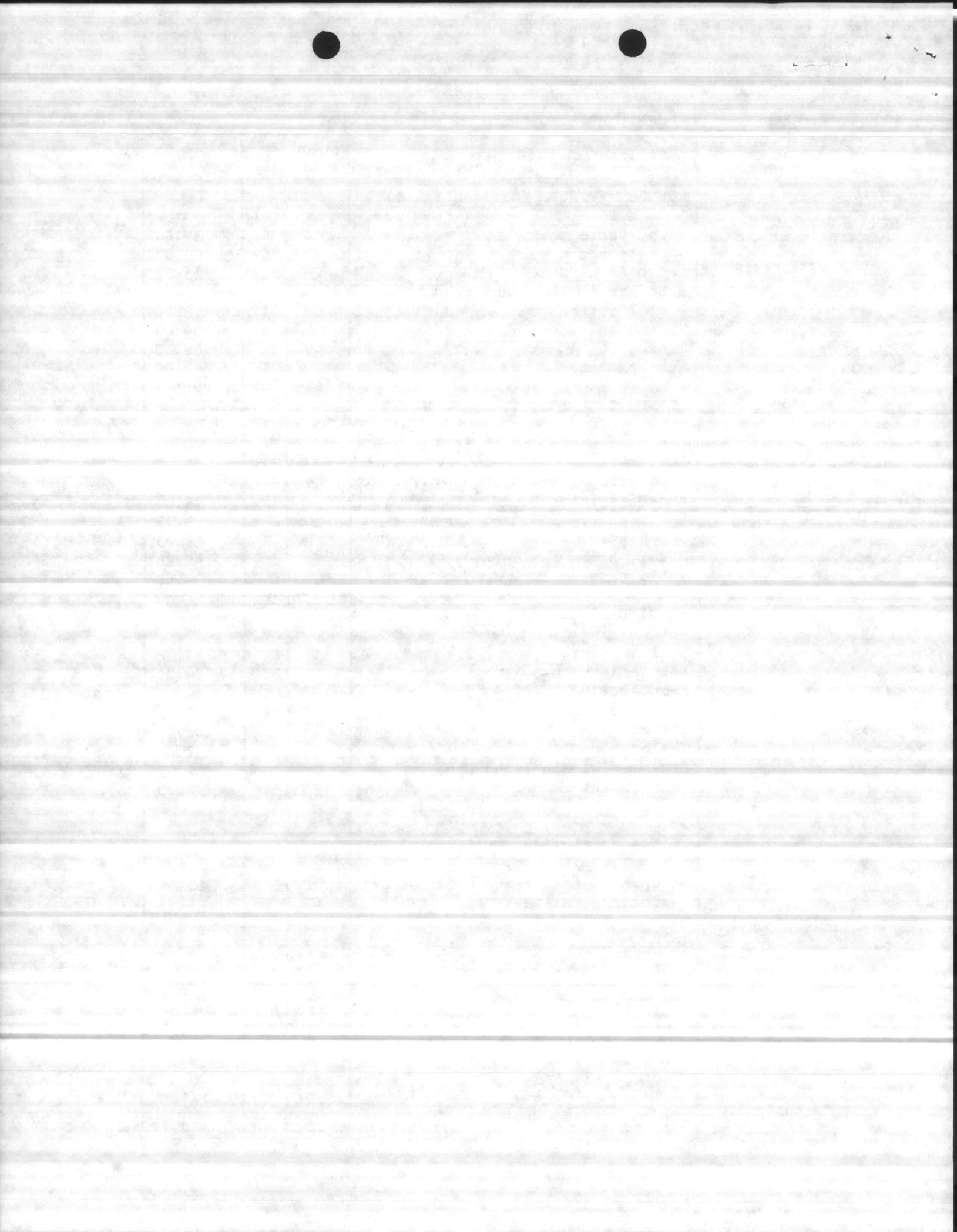
MARINE CORPS BASE, CAMP LEJEUNE, NORTH CAROLINA 28542

2 PROJECT TITLE

UNACCOMPANIED ENLISTED PERSONNEL HOUSING (UEPH)

P NO P-624

COG. SYMBOL AND FED. STOCK NO. OR OTHER SOURCE	ITEM/EQUIPMENT DESCRIPTION	QUAN- TITY	UNIT OF ISSUE	UNIT PRICE	TOTAL COST
	<u>LOUNGE, TV ROOM (6) (continued)</u>				
OP	Lamp, table	52	EA	50.86 39.00	2644.72 2,028 ^X
OP	Rack, magazine	8	EA	100.00	800
GSA 7105-00-689-8489	Receptacle, ash	52	EA	15.00	780
OP	Receptacle, ash (sand urn)	14	EA	61.95	867
OP	Table, coffee	26	EA	153.00	3,978
OP	Table, end	14	EA	100.00	1,400
OP	Table, TV	6	EA	60.00	360
OP	Wastebasket	64	EA	4.00	256
	<u>LOUNGE/GAME ROOM (6)</u>				
OP	Chair, game	112	EA	35.05	3,926
GSA 7195-00-242-3503	Costumer	14	EA	54.00	756
OP	Lamp, floor, w/table	26	EA	61.47 56.00	1598.22 1,456 ^X
OP	Rack, magazine	6	EA	75.00	450
OP	Receptacle, ash (sand urn)	32	EA	61.95	1,982
OP	Receptacle, waste	26	EA	39.05	1,015
OP	Stool, bar	38	EA	147.90	5,620
OP	Table, game	26	EA	199.82	5,195
	<u>READING LOUNGE AREA (6)</u>				
OP	Chair, lounge	108	EA	144.12	15,565
OP	Lamp, floor, w/table	14	EA	61.47 56.00	860.58 784 ^X
OP	Lamp, table	52	EA	50.86 39.00	2644.72 2,028 ^X
OP	Table, end	52	EA	100.00	5,200
OP	Table, game ^{oil}	14	EA	246.00	3,444
OP	Table, round ^{oil}	14	EA	167.00	2,338
OP	Receptacle, ash (sand urn)	38	EA	61.95	2,354
OP	Wastebasket	26	EA	6.00	156
	<u>VENDING AREA (18)</u>				
OP	Receptacle, ash (sand urn)	42	EA	61.95	2,602
OP	Receptacle, waste	42	EA	39.05	1,640
	<u>LAUNDRY (18)</u>				
FP	Cart, Laundry	42	EA	30.00	1,260
Rental	Washer, clothes			* See Note	
Rental	Dryer, clothes			* See Note	
GSA 7290-00-663-7300	Board, ironing	42	EA	8.00	336
	Receptacle, waste ^{misc}	42	EA	39.05	1,640
OP	Table, laundry	22	EA	100.00	2,200
	floor polisher (2 per floor)	36	"	350.00	
	vacuum cleaner	36	"	150.00	



1 ACTIVITY (Name and Location)

MARINE CORPS BASE, CAMP LEJEUNE, NORTH CAROLINA 28542

2 PROJECT TITLE

UNACCOMPANIED ENLISTED PERSONNEL HOUSING (UEPH)

P NO
P-624

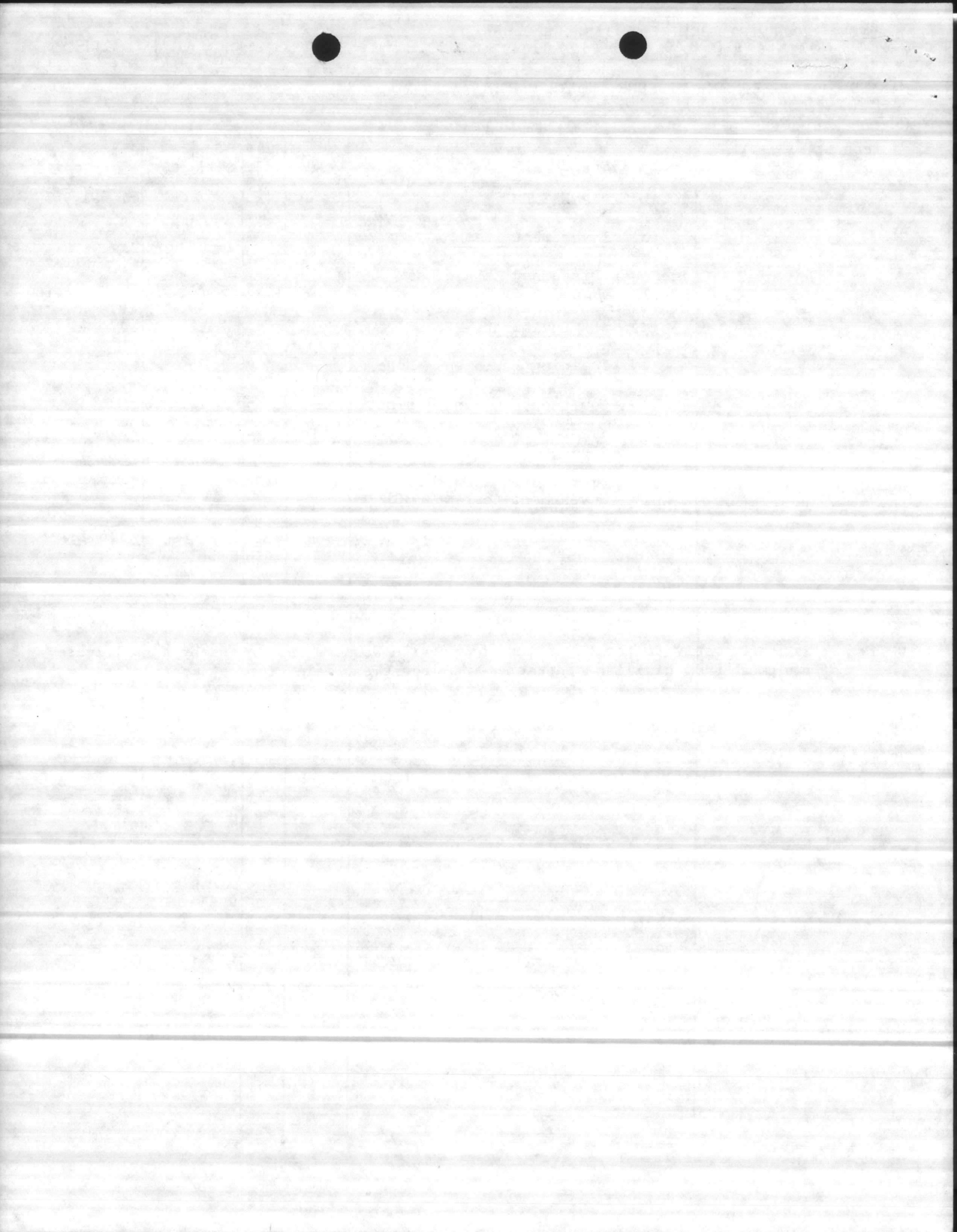
COG. SYMBOL AND FED. STOCK NO. OR OTHER SOURCE	ITEM/EQUIPMENT DESCRIPTION	QUAN- TITY	UNIT OF ISSUE	UNIT PRICE	TOTAL COST
	TOTAL EXPENSE ITEMS				1,621,965
	(c) <u>Investment Items</u>				
	Icemaker Dispenser, stainless steel	6	EA	3,304.40	19,826
	(d) <u>APA Equipment</u> - None				
	(e) <u>Training Equipment</u> -None				
	(f) <u>Equipment on Hand</u> - None				
	(g) <u>Summary</u>				
	Expense Cost (O&MMC)				1,621,965
	Investment Cost (O&MMC)				<u>19,826</u>
	GRAND TOTAL				1,641,791

NOTE: It is least costly to the Government to provide washers and dryers by rental/lease of equipment from civilian contractor with equipment maintained by contractor.

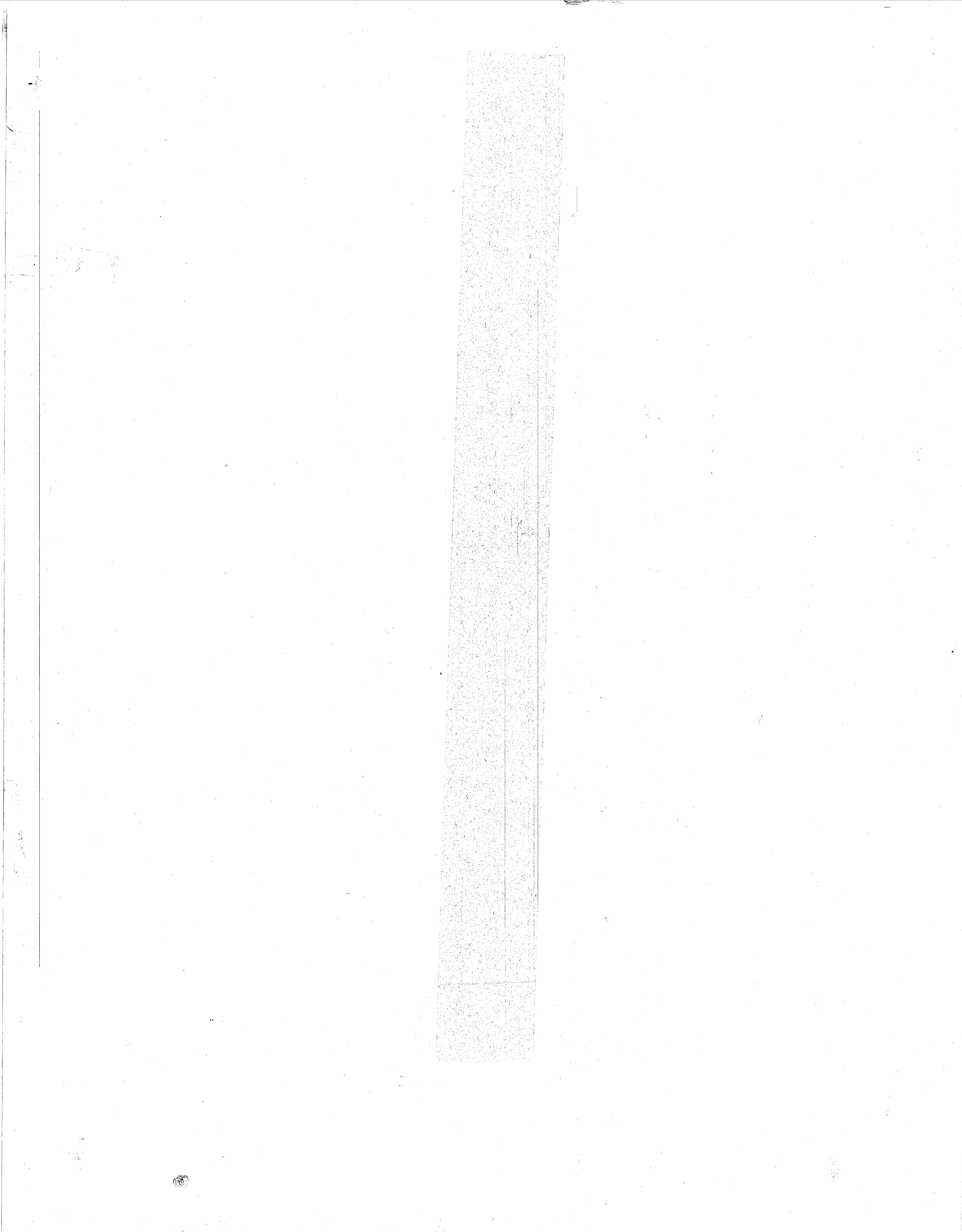
ESTIMATED BOD FEBRUARY 1986.

Handwritten:
 1,641,791
 726,892

 2,368,683



654. X
3275. =
3448650. =
654. X
237.95 =
155619.3 =
1310. X
147.00 =
192570. =
229.00 X
1310. =
299990. =
84.00 X
88. =
7392. =
162.50 X
88. =
14300. =
38.50 X
88. =
3388. =
84.00 X
32. =
2688. =
17.24 X
32. =
551.68 =
17.24 X
32. =
551.68 =
358.00 X
6. =
2148. =
25.00 X
6. =
150. =
10. X
6. =
60. =
190. X
6. =
1140. =
1290.00 X
6. =
7740. =
95.00 X
6. =
570. =
255.00 X
6. =
1530. =
64.60 X
6. =
387.6 =
82.92 X
6. =
497.52 =
72.98 X
6. =
437.94 =
51.61 X
6. =
309.66 =
2.85 X
6. =
17.1 =
90.00 X
6. =
540. =
50.86 X
6. =
305.16 =
34499. +
155619. +
192570. +
299990. +
7392. +
14300. +
3388. +
2688. +
552. +
2148. +
150. +
60. +
1140. +
60. +
7740. +
570. +
1530. +
388. +
498. +
438. +
310. +
17. +
540. +
305. +
72682. =



From 86 to 94 Program - Spalte 8/183

then flip flopped

TV in Lounge TV Room -

✓ TV 25" Zenith, Color.	358.00	6	2,148.00
✓ Wall Mount.	15.00	6	90.00

Lounge (6)

✓ Dart Board	10.00	6	60.00
✓ Ping Pong Table incl Acces.	190.00	6	1,140.00
✓ Pool Table	1,290.00	6	7,740.00
✓ Pool Table Acces.	95.00	6	570.00
Lounge Chairs	110.00	108	

2 Person Rooms (624)

7105-00-840 8900	Double Dresser. 6 drawer. 53 1/2" x 19" x 34" H.	237.95	624
7105-00-689 9250	Chair 41" x 33"	52.75	624
OP	Lounge chairs (2 per km)	229.00	654

Office Area (6)

	Office Space (entry room).		
	Stool Chair	50.00	6
	Double Red Desk	245.00	6
	Secretarial Chair, Rotary	85.00	6
985-5689	File - 2 drawer	190.00	6
	Desk Lamp	50.86	6
	Trash Can ^{Waste paper baskets}	3.00	6
	Bookcase		
	Typing Hardware	97.00	6
✓	1 Person Rooms (84)		
	Mattresses - bring size	84.00	88

1 Person 2 Rooms (60)

✓	Mattresses, ^{full} bring size	84.00	32
---	---	-------	----

Desk Storage Unit has drawer space.

(over)

✓ Floor Polisher (x per floor)	36	350.00	12,600.
✓ Vacuum Cleaner (" ")	36	150.00	5,400

P 624

no mattresses
3 door chests
chest, 3 door -

3061 1/2/31
Joyce Winslow
Mary Belar

Bedg 12/12
Louis + Cedar
2 bedg on L

Person 4 door
1 " 3 door

Bulletin Bd
1 Per Rm

[The image shows a page of handwritten text on lined paper, which is extremely faint and illegible. The text appears to be organized into several columns or rows, but the characters are too light to be transcribed accurately.]

~~P-414~~
P-414

Bldg 1011
T+R Mr Bachelor

mem cars Cot
kuch - Competitive bid

T+R

624 1 mile
Person

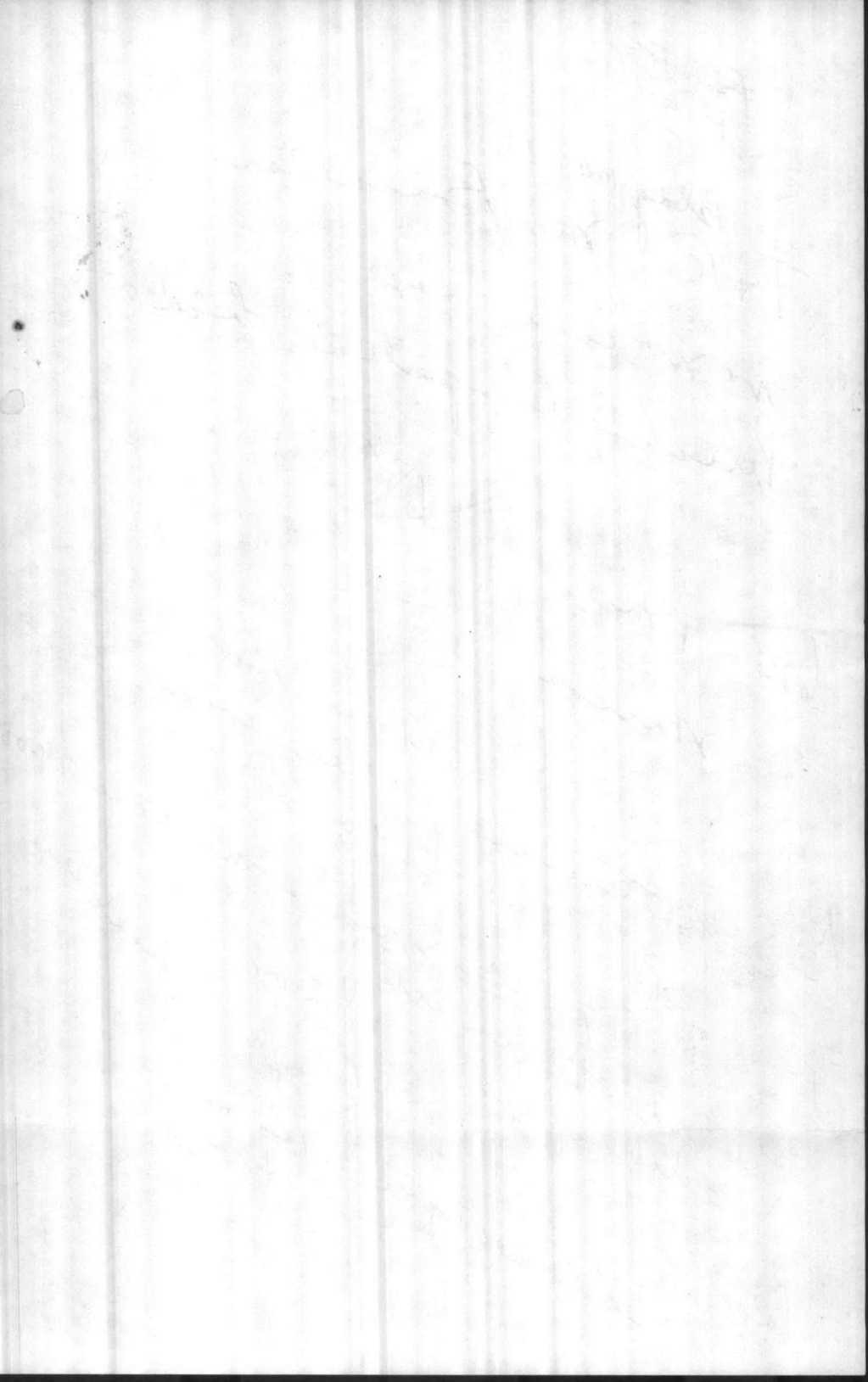
\$8.1 per Rm
1 per room

1/4 no mattresses \$79.00
" 1 person & room mattress 79.00

1/4 Wardrobe inserts 112.00
3 draw chest.

ask Gene

Page 14 Bed, full price 100.00
now 148.75



2 P. room

P-635 ^{good} model

Shelves in party Don't order bookcase or

Desk Stge Unit ok

Chest wardrobe w/ mirror (2nd 3 drawer Chest)

KLN Steel

need this for built in wardrobe.
good -

Clamp on bed side 1 for ea. at 17.24

Table lamp - or 2 lamp. ~~#757~~
floor lamp better.

Mattresses

head + foot board included in bunk bed. don't order
" " " Separately -

2 lounge chairs per Room Subst. ? 3 lounge
" Desk " " "

1 Person Room

Chest, wardrobe w/ mirror
order 1 dresser per Room.

Design Pkg on P-634? Ask Gene. No

No ottoman

Mattresses ✓
Dressers ✓
3 drawer chest for built in wardrobe (1 per room)

~~3 P. Person 2 rooms~~
~~Table lamp~~
~~Clamp on bed side~~ (we need)
Swag lamp to floor lamp -
Lounge chair ✓
Lounge chair ✓
Lounge chair ✓
Lounge chair ✓
Lounge chair ✓

