



**UNITED STATES MARINE CORPS**  
Marine Corps Base  
Camp Lejeune, North Carolina 28542-5001

6280/9  
FAC  
JAN 08 1987

From: Commanding General, Marine Corps Base, Camp Lejeune  
To: Commandant of the Marine Corps (LFL)

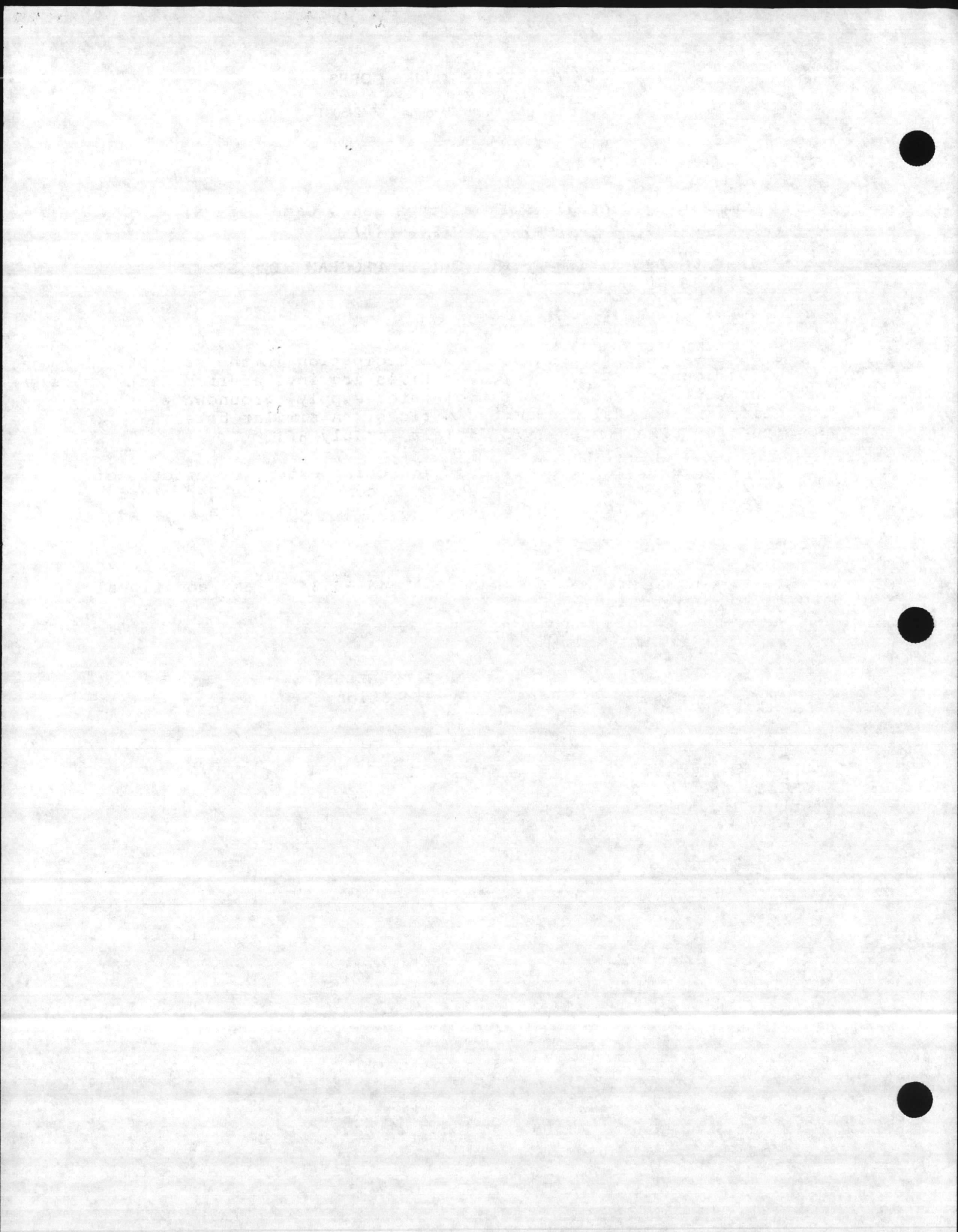
Subj: IN-PROGRESS REVIEW OF N.A.C.I.P. PROGRAM WITH STATE  
OFFICIALS

Encl: (1) Proposed Agenda

1. We request your attendance and participation in the subject review, 21 January 1987. Representatives are invited from State hazardous waste, CERCLA (Superfund) water supply, groundwater protection and coastal management offices. A similar briefing was given to USEPA Region IV officials in July 86.
2. The purpose of this review is to describe extensive efforts of the Navy/Marine Corps in CERCLA and RCRA compliance as described in the enclosure. This presentation should expedite State review and approval of FY 88-89 NACIP project results by keeping them informed along the way.
3. Please advise Mr. Bob Alexander, AV 484-3034 of any additional details you may desire.

T. J. DALZELL  
By direction

Copy to:  
CMC (LFF)  
LantDiv (Code 114)  
CO, MCAS, NR  
(Attn: Ground Safety Mgr)  
Env Science & Eng, Inc.







Camp Geiger Dump - Heavy Metal, Organic cpds detected

Tarawa Terrace PX Station - Gasoline Recovery/Research Site

1530-1600

Return to Building #1



## Project Report - April 1986 - January 1987

INVESTIGATION NO. 00-034: An appraisal of the ground-water resources of Camp Lejeune Marine Corps Base, N.C.

PERIOD OF INVESTIGATION: 1986-89

INVESTIGATION CHIEF: Douglas A. Hanned, U.S. Geological Survey, Box 2057, Raleigh, N.C., 27602, FTS 672-4791, 919-856-4791

COOPERATOR: Federal

OBJECTIVE: The objectives of this study are: to describe the ground-water resources of the base and environs and to construct an appropriate ground-water flow model that will be used to evaluate alternative ground-water use and management practices. This is a three-phased study: the first phase is examination of available data, the second phase is collection of additional data and construction of new observation wells, and the third phase is modelling.

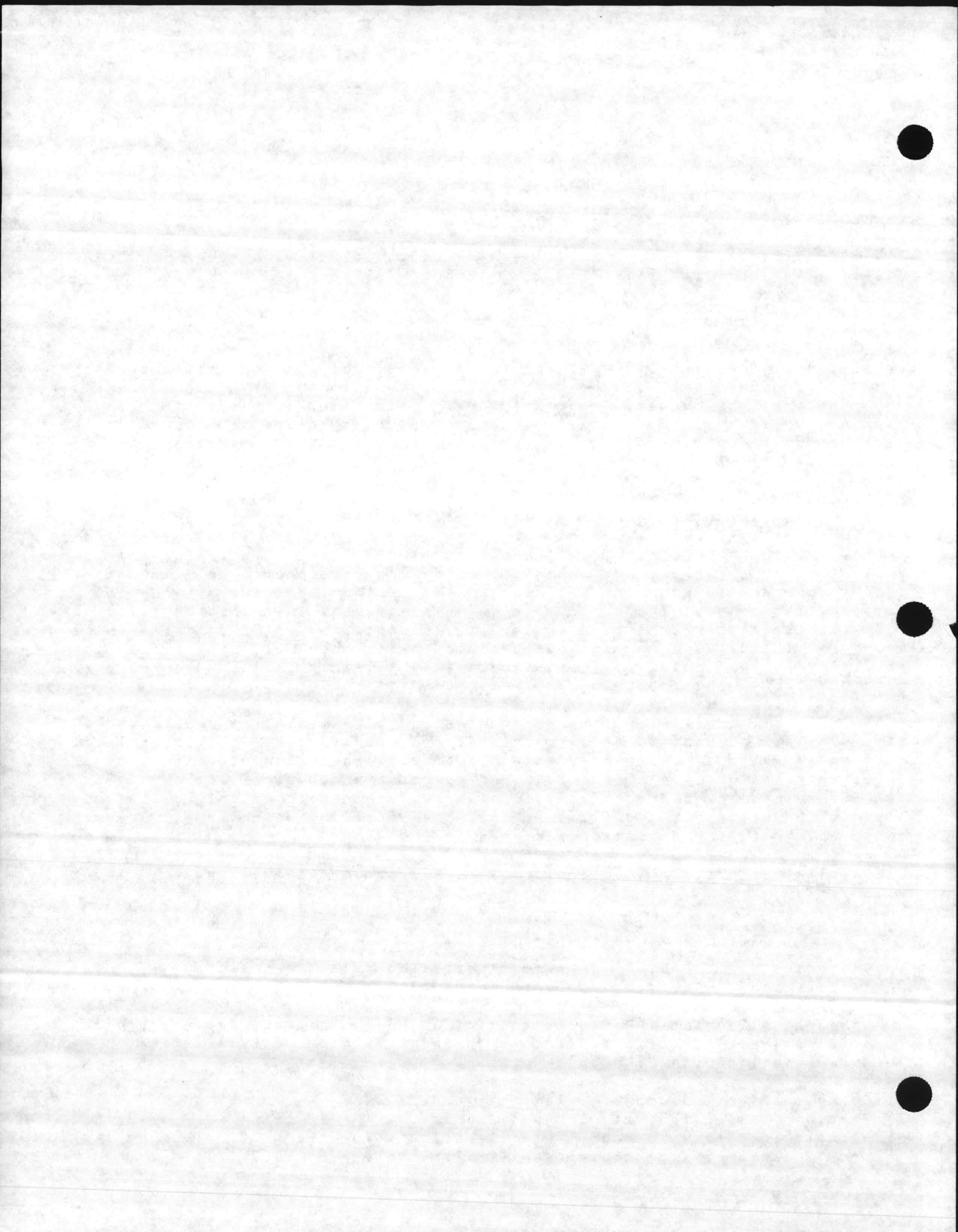
SIGNIFICANT FINDINGS AND PROGRESS: A stream-gaging station, and a rain gage were installed in the Town Creek basin to provide data on ground-water recharge. water-level recorders were installed at HP-630, TT-53, RR-97, and at the Folkstone NRCO site. well drilling at the Camp Lejeune NRCO site began in September. water-use and well-file data were obtained. A well inventory was made in preparation for the well logging and water-level surveys run in October. A tide gage and a barometer were installed. In the water level survey 27 wells were checked and water levels were obtained at 76 of those wells. Geophysical logs were run in November for the 16 open wells identified in the well survey. Data obtained from Camp Lejeune files on static water levels, pumping levels, and drawdown were entered into a SAS dataset.

PLANS FOR NEXT QUARTER: Continue examination of existing water use and well data. Install one additional water-level recorder. Analyze the water-level data and develop a preliminary water-level map. Establish elevations of the 76 wells where water levels were obtained. Examine geophysical log data, and make a preliminary geohydrologic framework. Obtain geophysical logs of new observation wells being drilled by ESE. Make a second water-level survey in March. Write the annual project report.

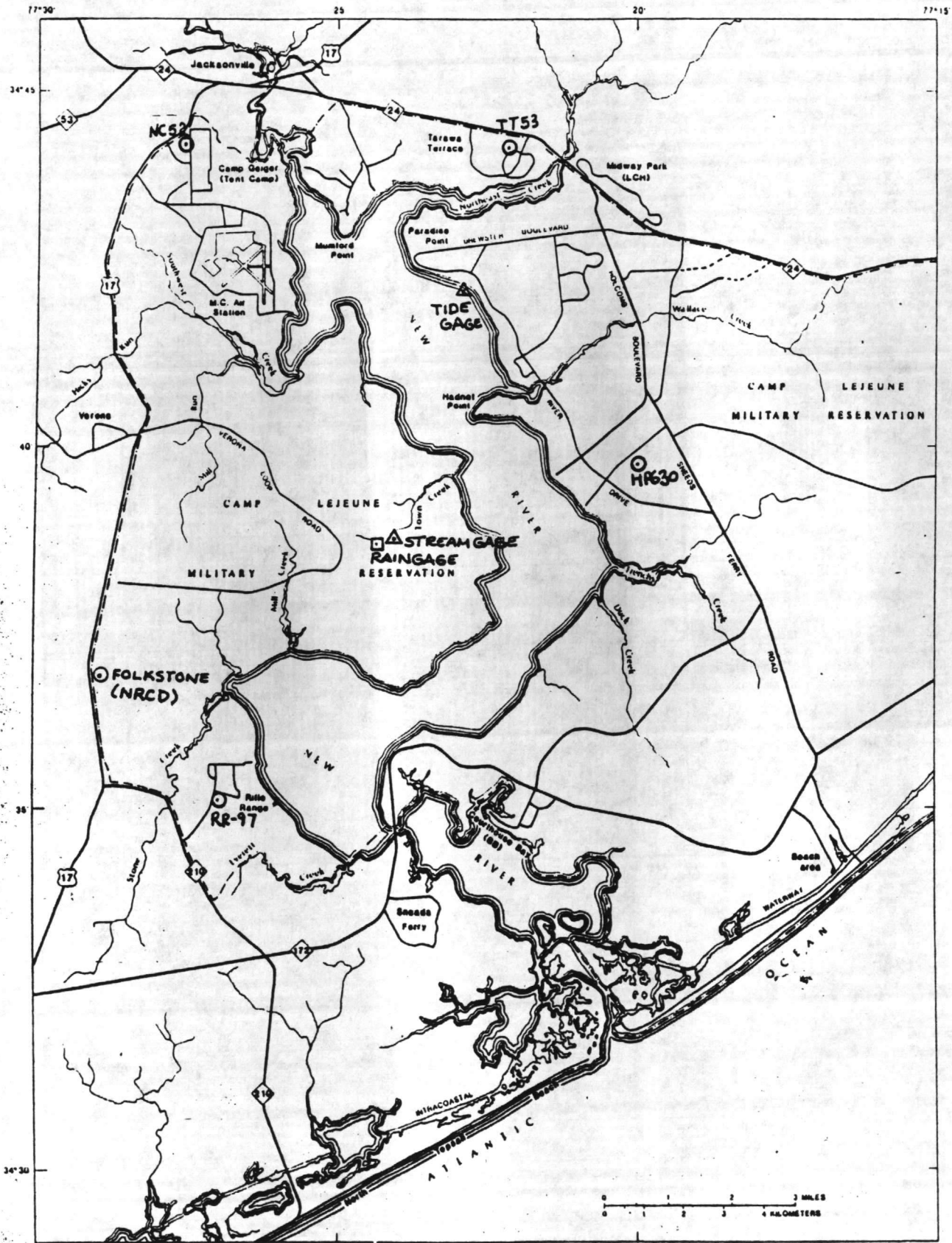
REPORT STATUS: Data collection and analysis for the annual project report is underway.

PROJECT HIGHLIGHTS:

- A. Project stage: Phase I: review of existing data and preliminary description of the geohydrologic framework.
- B. Cooperator Contacts: Periodic contact with Mr. Price and Mack Frazelle of Utilities, periodic meetings with Bob Alexander of Facilities, and a meeting with Mike Geden of ESE.
- C. Changes affecting project elements: None.
- D. Problems associated with project: None.
- E. Hydrologic data released: Water level data for the NRCO Folkstone station and 16 Gamma-ray log copies sent to Rick Shiver of NRCO 1/15/87.

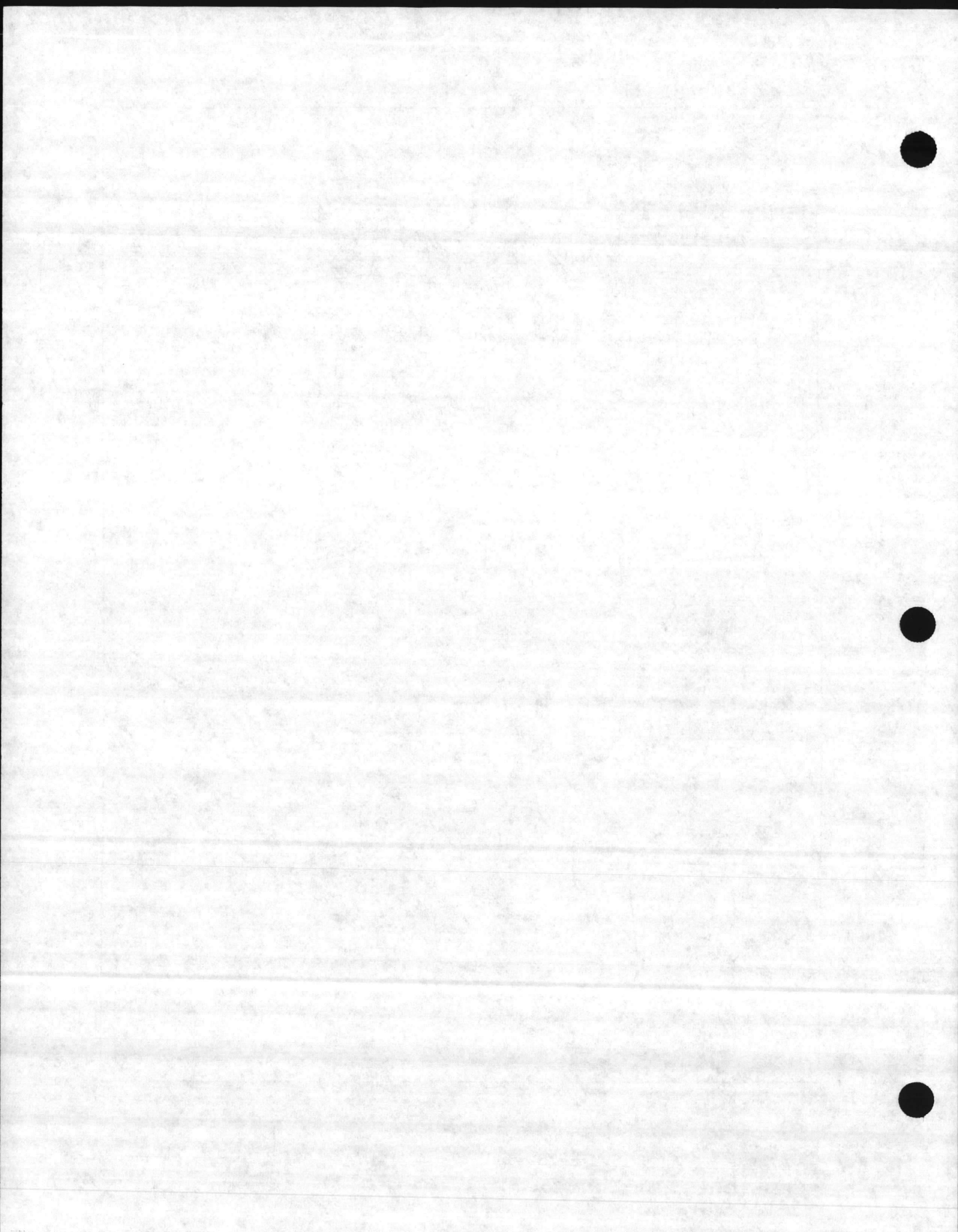






Base taken from Defense Mapping Agency Hydrographic Center, Camp Lejeune Special Map, 1:50,000

Locations of U.S. Geological Survey water-level recorders (Folkstone, RR-97, HP630, TT53, and NC52), stream gage, tide gage and raingage.



NAME	REPRESENTING	PHONE
<del>FRED HILL</del>	<del>W. J. S. - Marine Supply Co.</del>	<del>753-1343</del>
W. E. ...	... ..	732-2321
MICHAEL BELL	Greenville	756-1243
FREDY McELAN	M. D. ... ..	733-3221
RICK SHIVER	M.C. D. E. M.	919-253-4161
BOB ALEXANDER	MCB FACILITIES DEPT	919-451-3037
...	...	...
J. BRUCE LLOYD JR.	US Geological Survey Water Resources Division	(919) 556-4791
LANDY McEKS	"	919-556-4510
DOUGLAS HARNED	"	919-856-4791
RONALD COBLE	"	"
MARY WHEAT	MCAS, NEW RIVER	919-451-6518
LEE CROSBY	...	733-2301
James Carter	NC DHR Solid & Hazardous Waste	919/733-2473
Paul Layman	NC DHR, Solid & Haz Waste Manag.	919/733-2177
...	...	...
ELIZABETH A. BETZ	NREAD, MCB	919/451-5977

DHS - potable water quality at point of distribution (MCLs)  
 DEM - groundwater / surface water quality in situ (ACLs)  
 DHR Solid & HW Mgmt. - they believe our work will fall under RCRA corrective action; they anticipate authorization soon

CERCLA - NC does not conduct Superfund responses, branch exists primarily to complement fed. efforts

