

PURCHASE DESCRIPTION WORKSHEET

MCBCL 4225/2

SPECIFICATIONS

STOCK NO.

4510-01-C00-9861

Drain, Waste, Hi-Way Continuous, PVC Material,
Size: 1 1/2" X 16" Length Center to Center, With
End outlets, Direct Connection.

P/N ~~52650~~ 52670 (see attached 2-14-96d)

Y see attached 2/25/00

Mfg: C.S. + B Co.

Address: Unknown

P/M-130-16W

KEENEY

SOS-Ferguson

SOS: Longby Supply Co.

Jacksonville, NC 28540

A shipment came in wrong, instead of one end outlet, there was a center outlet.

James 29 FEB 88

LF 12516W

U/I

EA

U/P 7.00

NEW ITEM

DESCRIPTION CHANGE

SHOP STORES

SELF SERVICE CENTER

DATE

12-29-86

INITIALS

CEN

10/10/10

10/10/10

10/10

10/10/10

00-9867

87-032

4510-01-000-9861

NEW ITEM/DELETE NOTICE

MCBCL 4400 (REV 2-80)

Section 1

FROM: WORK MANAGEMENT SECTRION (TT SHOP 33)

DATE: ~~15 DEC 1986~~

TO: Officer in Charge, DSSC Division
(Attn: Systems Management and Development Branch)

1. NSN/MFR PART NR 4510-01-000-9861 PART#52650		2. REFERENCE PUBLICATION		3. MFR MAKE AND MODEL OR EQUIP NR C. S. & B. CO PART# 52650	
4. UNIT PRICE 7.00 EST DRAIN	5. UNIT OF ISSUE EA	6. 30 DAY USAGE 3	7. DATE REQUIRED 2 JAN 1986	8. ISSUE PT REQUIRED MMLV-71	

9. DESCRIPTION WASTE, CONTINUOUS, HI-WAY, PLASTIC, 1 1/2" X 16" END OUTLET, DIRECT CONNECTION, C. S. & CO, PART #52650, P. V. C.

SIGNATURE: Daniel K Brulloch

SS: Fongley Supply Co.

Section II

DATE: 22 Dec 86

CONTROL NO: SMAD #2256

FROM: Officer in Charge, Systems Management and Development Branch

TO: JAC

APPROVED DISAPPROVED CATALOG DELETE RESEARCH

REMARKS:

SIGNATURE: JM Fatchu

Section III

DATE: 12-29-86

FROM: Officer in Charge, Support Division, Technical and Research Branch

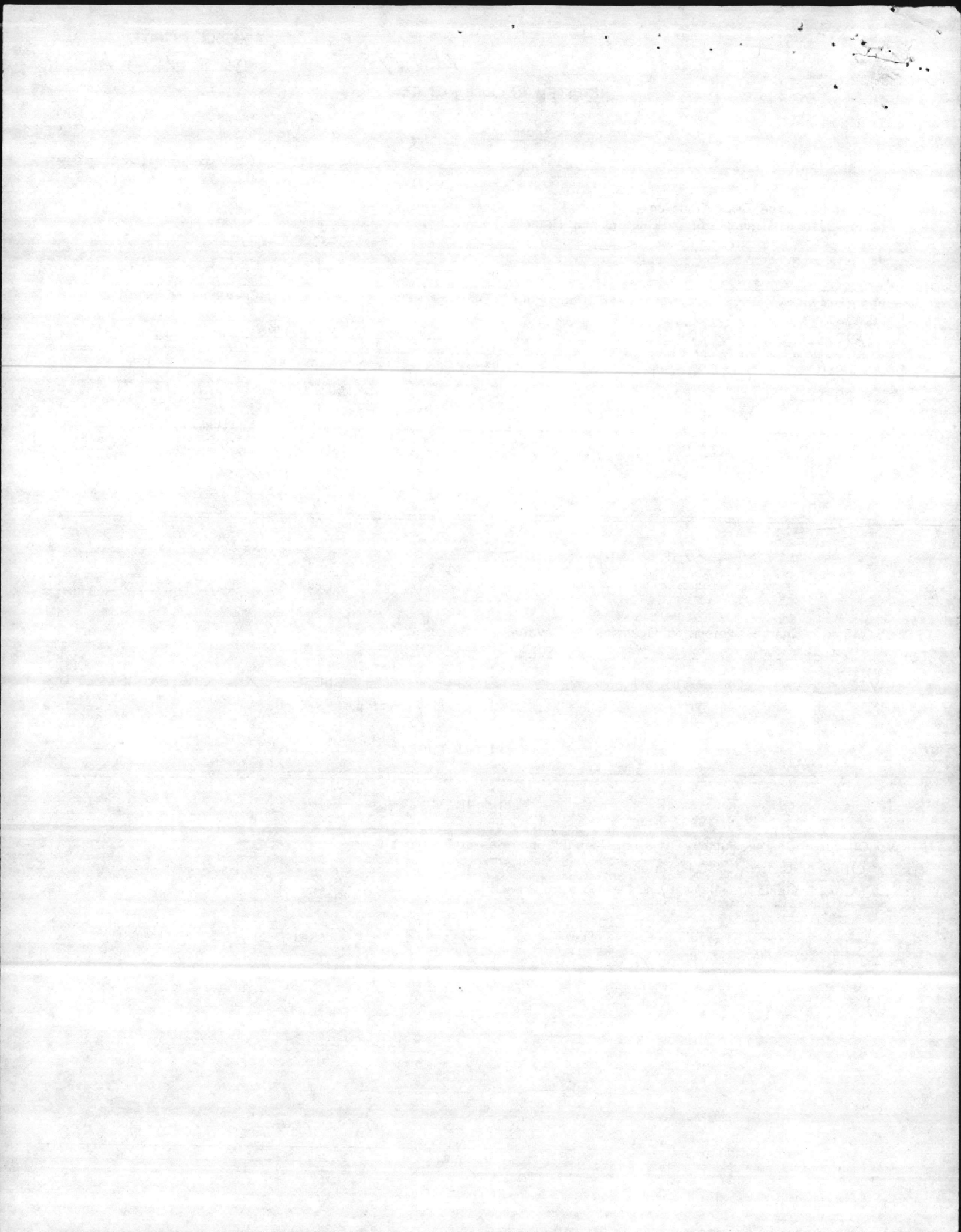
TO: Officer in Charge, DSSC Division
(Attn: Systems Management and Development Branch)

U/P EA	U/P 7.00	MEC 35	SAC 1	SSRIC	DEMIL A
-----------	-------------	-----------	----------	-------	------------

REMARKS:

Batch No. 5350-86363

SIGNATURE: Cliff Norman

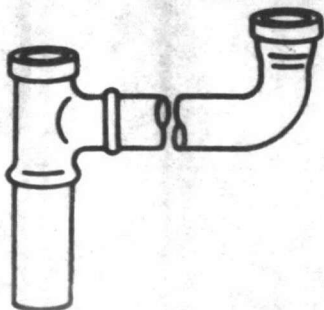


F06

IDENTIFICATION LIST - DESCRIPTIVE METHOD

A I NSN
C N 4510
T

DESCRIPTIVE DATA

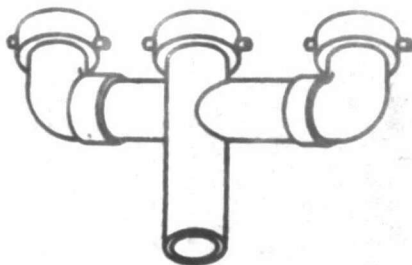


DRAIN, MULTIPLE, WASTE

FOR ITEMS 01

01 00-276-7838

DRAIN, MULTIPLE, WASTE; 1-1/2 IN. DIA TUBE; 2 INLETS; END OUTLET; 24 TO 25 IN. C TO C INLET DIM; W/SLIP JOINT NUTS, WASHERS AND FRICTION RINGS ON INLETS; BRASS, CHROME-PLATED FINISH; NONDEFINITIVE SPEC/STD DATA FIG 3; FSCM 80830, P/N R7321; FSCM 27702, P/N 108SATIN; FSCM 14959, P/N B-450



DRAIN, MULTIPLE WASTE

FOR ITEMS 02

02 00-277-4235

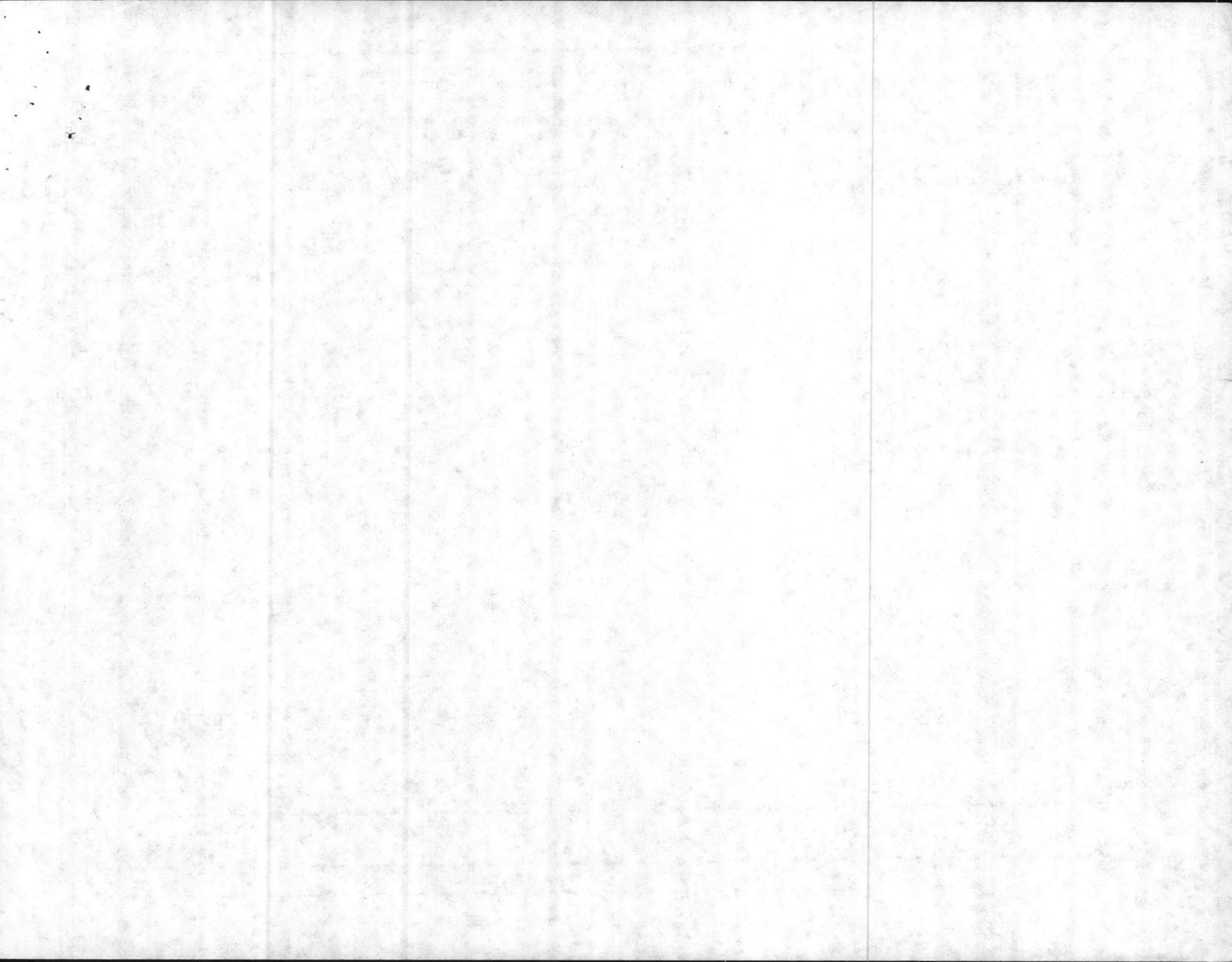
DRAIN, MULTIPLE, WASTE; BRASS; CHROMIUM-PLATED FINISH; 1.5 IN. DIA OF TUBE; 3 INLETS; END OUTLET; 28 IN. C TO C INLET; W/SLIP JOINT NUTS, WASHERS, FRICTION RINGS ON INLETS; FEAT W/TAIPIECE ON OUTLET END; FSCM 73380, P/N 6084-1

03 01-193-7792

DRAIN, MULTIPLE, WASTE; BRASS; 17 GAUGE; SATIN FINISH; SLIP JOINT DESIGN; 16 IN. C TO C OF END OUTLETS; 1.5 IN. OD; FSCM 27702, P/N FS117A; FSCM 39428, P/N 2677K70; FSCM 02271, P/N 52422

04 01-142-9226

DRAIN PLUG, LAVATORY; CONSISTS OF RETAINING RING, LOCKING MECH. ASSY, ACTUATOR SLEEVE, PIN, TOP COVER ASSY, RETAINER SLEEVE, SEAL AND PLUG ASSY; 4 O.D. BY 0.94 LATCHED THICKNESS AND 1.01 UNLATCHED; END ITEM ESA AIRCRAFT BUFFET AND LAVATORY; FSCM 86831, P/N 4259-20



TELECOPIER COVER SHEET (2300)

DATE: 96 FEB 12

TO: Rich

COMMANDING GENERAL
(ATTN CONTRACTING DIVISION)
MARINE CORPS BASE
PSC BOX 20004
CAMP LEJEUNE NC 28542-0004

FROM: SGT SMITH

SUBJ: P/N 52650
4510-01-COO-9861

PHONE: _____ FAX # (910) 451-3072

COMPANY # _____
FAX: _____

COMMENTS: LET ME KNOW WHICH ONE
YOU WANT TO ORDER

WE ARE TRANSMITTING 3 PAGES, INCLUDING THIS COVER LETTER.
IF TRANSMISSION IS NOT COMPLETE, PLEASE CALL THE SENDER AT THIS
TELEPHONE NUMBER: COMM (910) 451-3011 OR DSN 484-3011



TELECOPIER COVER SHEET (2300)

DATE: 10 Feb 12

TO: K. Ch
COMMANDING GENERAL
(ATTN CONTRACTING DIVISION)
MARINE CORPS BASE
PSC BOX 20004
CAMP LEJEUNE NC 28542-0004

FROM: Sgt Smith

SUBJECT: IN ORDER

PHONE: 451-3072

FAX # (910) 451-3072

COMPANY #
FAX:

COMMENTS: LET ME KNOW WHICH ONE

YOU WANT TO ORDER

WE ARE TRANSMITTING 3 PAGES, INCLUDING THIS COVER LETTER.
IF TRANSMISSION IS NOT COMPLETE, PLEASE CALL THE SENDER AT THIS

TELEPHONE NUMBER: COMM (910) 451-3072 OR DSN 484-3072



PLASTIC TUBULAR

Slip Joint Telescopic

Part No.	Description	Finish	Std. Pack	List Price
5265TEL	1 1/2 x 16 Telescope S/J	White	25	6.31
5265TEL 1/2	1 1/2 x 16 Telescope S/J E.O. w/ 1/2" Branch Hose Conn.	White	25	6.14
5265TEL 3/4	1 1/2 x 16 Telescopic S/J E.O. w/ 3/4" Branch Hose Conn.	White	25	6.14
5264TEL	1 1/2 x 21 Telescopic S/J E.O. Continuous Waste	White	25	6.82
5264TEL 1/2	1 1/2 x 21 Telescopic S/J E.O. w/ 1/2" Branch Hose Conn.	White	25	7.44
5264TEL 3/4	1 1/2 x 21 Telescopic S/J E.O. w/ 3/4" Branch Hose Conn.	White	25	7.44

CONTINUOUS WASTE-CENTER OUTLET W/BAFFLE

Slip Joint

Part No.	Description	Finish	Std. Pack	List Price
5267	1 1/2 x 16	White	25	7.30
5268	1 1/2 x 21	White	25	7.81
6267	1 1/2 x 16	Black	25	7.30
6268	1 1/2 x 21	Black	25	7.81

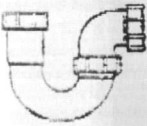

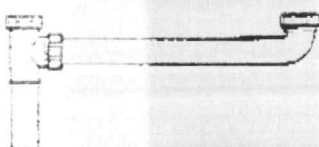
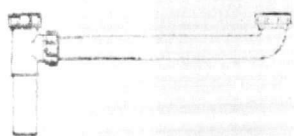
Direct Connect

52670	1 1/2 x 16	White	25	7.30
52680	1 1/2 x 21	White	25	7.81
62670	1 1/2 x 16	Black	25	7.30
62680	1 1/2 x 21	Black	25	7.81

UNIVERSAL CONTINUOUS WASTE-END OUTLET W/BAFFLE

Part No.	Description	Finish	Std. Pack	List Price
51265	1 1/2 x 16 End Outlet	White	25	5.70
51265TEL	1 1/2 x 16 Telescopic E.O.	White	25	6.31
51265TEL 1/2	1 1/2 x 16 Telescopic E.O. w/ 1/2" Branch Hose Conn.	White	25	6.49
51265TEL 3/4	1 1/2 x 16 Telescopic E.O. w/ 3/4" Branch Hose Conn.	White	25	6.49
61265	1 1/2 x 16 End Outlet	Black	25	5.70
61265TEL	1 1/2 x 16 Telescopic E.O.	Black	25	6.31

PLASTIC TUBULAR

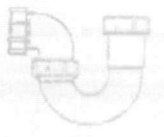
REPAIR TRAP		Part No.	Description	Finish	Std. Pack	List Price
		515	1 1/2 or 1 1/2 x 1 1/4	White	25	4.29
		615	1 1/2 or 1 1/2 x 1 1/4	Black	25	4.29
WASHING MACHINE TRAP		Part No.	Description	Finish	Std. Pack	List Price
	IPS Connection	582	1 1/2 x 25 1/2	White	25	7.79
		682	1 1/2 x 25 1/2	Black	25	7.79
	Solvent Weld	583	1 1/2 x 25 1/2	White	25	7.79
		683	1 1/2 x 25 1/2	Black	25	7.79
NOTE	For Continuous Waste and Disposer Kits bagged deduct .10 cents from list price.					
CONTINUOUS WASTE END OUTLET W/BAFFLE		Part No.	Description	Finish	Std. Pack	List Price
	Slip Joint	5265	1 1/2 x 16 Slip Joint	White	25	5.57
		5264	1 1/2 x 21 Slip Joint	White	25	6.20
	Direct Connect	6265	1 1/2 x 16 Direct Connect	Black	25	5.57
		6264	1 1/2 x 21 Direct Connect	Black	25	6.20
	Direct Connect	52650	1 1/2 x 16 Direct Connect	White	25	5.57
		52640	1 1/2 x 21 Direct Connect	White	25	6.20
		62650	1 1/2 x 16 Direct Connect	Black	25	5.57
		62640	1 1/2 x 21 Direct Connect	Black	25	6.20



PLASTIC TUBULAR

Part No. Description Finish Std. Pack List Price

815	1 1/2 or 1 1/2 x 1 1/4	White	25	4.29
815	1 1/2 or 1 1/2 x 1 1/4	Black	25	4.29

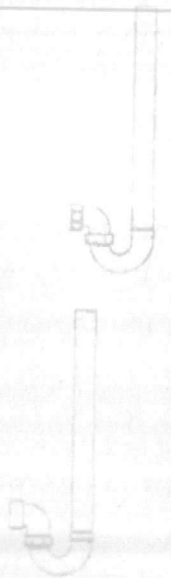


Part No. Description Finish Std. Pack List Price

882	1 1/2 x 25 1/2	White	25	7.79
882	1 1/2 x 25 1/2	Black	25	7.79

IPS
Connector

Solvent
Weld



883	1 1/2 x 25 1/2	White	25	7.79
883	1 1/2 x 25 1/2	Black	25	7.79

NOTE: For Continuous Waste and Disposer Kits bagged deduct .10 cents from list price.

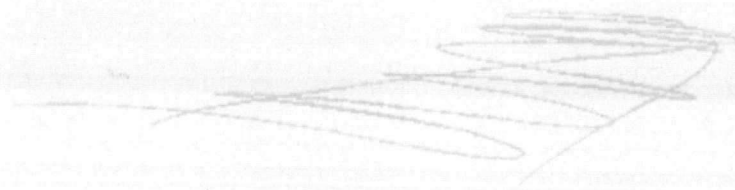
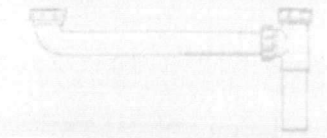
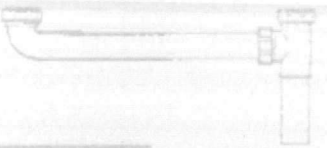
Part No. Description Finish Std. Pack List Price

5285	1 1/2 x 18 Slip Joint	White	25	8.57
5284	1 1/2 x 21 Slip Joint	White	25	8.50
6285	1 1/2 x 18 Slip Joint	Black	25	8.57
6284	1 1/2 x 21 Slip Joint	Black	25	8.50
5280	1 1/2 x 18 Direct Connect	White	25	8.57
5280	1 1/2 x 21 Direct Connect	White	25	8.50
6280	1 1/2 x 18 Direct Connect	Black	25	8.57
6280	1 1/2 x 21 Direct Connect	Black	25	8.50

CONTINUOUS WASTE
END OUTLET WARE

Slip Joint

Direct
Connect



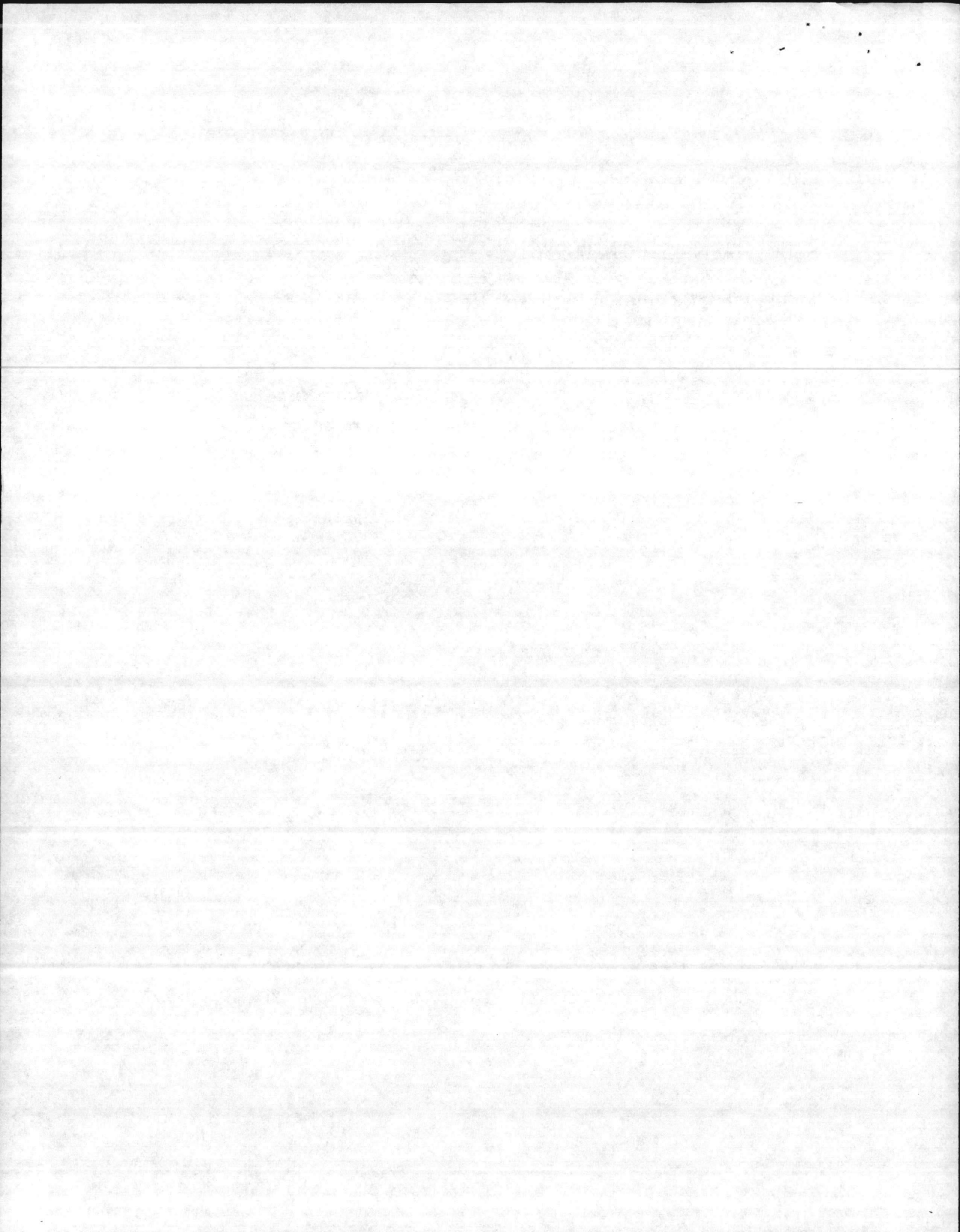
25 Feb 00

From: Shop Stores
To: Shop Stores

Subj: NSN 451001C009861

1. Per Chuck Cantu at Ferguson Enterprises change to
130-16W KEENEY

Julie Batchelor
Julie Batchelor



Part Num.	Item Description	UPC# 048224	Ctn Qty	Ctn Wt.	Illustration
END OUTLET CONTINUOUS WASTES WITH BAFFLE TEE - SLIP JOINT - CONTINUED					
125-18W	1 1/2" X 16" WHITE - WITH 8" TAILPIECE - BOXED	91933 9	25	15 lbs.	
125-18B	1 1/2" X 16" BLACK - WITH 8" TAILPIECE - BOXED	91932 2	25	15 lbs.	
127W	1 1/2" WHITE - ADJ. WASTE WITH 1/2" BRANCH - BAGGED	70458 4	25	14 lbs.	
127B	1 1/2" BLACK - ADJ. WASTE WITH 1/2" BRANCH - BAGGED	70535 2	25	14 lbs.	
119W	1 1/2" - TELESCOPIC WASTE 3/4" BRANCH WHITE - BAGGED	70321 1	25	13 lbs.	
119B	1 1/2" - TELESCOPIC WASTE 3/4" BRANCH BLACK - BAGGED	72286 1	25	13 lbs.	
END OUTLET CONTINUOUS WASTES WITH BAFFLE TEE - DIRECT CONNECT					
125A-16W	1 1/2" X 16" WHITE - BOXED	91945 2	25	13 lbs.	
125A-16B	1 1/2" X 16" BLACK - BOXED	91941 4	25	13 lbs.	
125A-16TTW	1 1/2" X 16" WHITE - BAGGED	91944 5	25	13 lbs.	
125A-16TTB	1 1/2" X 16" BLACK - BAGGED	91943 8	25	13 lbs.	
120AB	1 1/2" BLACK ADJUSTABLE - BAGGED	70375 4	25	18 lbs.	
120AW	1 1/2" WHITE ADJUSTABLE - BAGGED	70372 3	25	18 lbs.	
127AW	1 1/2" WHITE ADJ. WASTE WITH 1/2" BRANCH - BAGGED	91967 4	25	14 lbs.	
127AB	1 1/2" BLACK ADJ. WASTE WITH 1/2" BRANCH - BAGGED	70376 1	25	14 lbs.	
119AW	1 1/2" TELESCOPIC WASTE 3/4" BRANCH WHITE - BAGGED	70456 0	25	13 lbs.	
119AB	1 1/2" TELESCOPIC WASTE 3/4" BRANCH BLACK - BAGGED	70468 3	25	13 lbs.	
CENTER OUTLET CONTINUOUS WASTES WITH BAFFLE TEE - SLIP JOINT					
130-16W	1 1/2" X 16" WHITE - BOXED	91986 5	25	16 lbs.	
130-16B	1 1/2" X 16" BLACK - BOXED	91983 4	25	16 lbs.	
130-21W	1 1/2" X 21" WHITE - BOXED	91989 6	25	18 lbs.	
130-21B	1 1/2" X 21" BLACK - BOXED	91988 9	25	18 lbs.	
130-25W	1 1/2" X 25" WHITE - BOXED	91991 9	25	20 lbs.	
130-25B	1 1/2" X 25" BLACK - BOXED	72202 1	25	20 lbs.	
CENTER OUTLET CONTINUOUS WASTES WITH BAFFLE TEE - DIRECT CONNECT					
130A-16W	1 1/2" X 16" WHITE - BOXED	91985 7	25	16 lbs.	
130A-16B	1 1/2" X 16" BLACK - BOXED	91993 3	25	16 lbs.	
130A-21W	1 1/2" X 21" WHITE - BOXED	91998 8	25	18 lbs.	
130A-21B	1 1/2" X 21" BLACK - BOXED	91997 1	25	18 lbs.	
130A-25W	1 1/2" X 25" WHITE - BOXED	91999 5	25	20 lbs.	
130A-25B	1 1/2" X 25" BLACK - BOXED	72201 4	25	20 lbs.	
MASTERWASTES 1 1/2"					
120W	1 1/2" WHITE ADJ. DIRECT CONNECTION OR SLIP JOINT CONNECTION TELESCOPIC TEE - BAGGED	91879 0	25	18 lbs.	
120B	1 1/2" BLACK ADJ. DIRECT CONNECTION OR SLIP JOINT CONNECTION - BAGGED	91876 9	25	18 lbs.	
122W	1 1/2" X 16" WHITE END OUTLET DIRECT CONN. OR SLIP JOINT CONNECTION - BOXED	91906 3	25	17 lbs.	

PASTIC-11111

