

**FIN-TUBE RADIATION DETAILS**  
NO SCALE

**FIN-TUBE RADIATION SCHEDULE**

NO.	TYPE	SIZE	LENGTH	WEIGHT
1	1/2"	11'-0"	11'-0"	11.0
2	3/4"	11'-0"	11'-0"	16.5
3	1"	11'-0"	11'-0"	22.0
4	1 1/2"	11'-0"	11'-0"	33.0
5	2"	11'-0"	11'-0"	44.0
6	2 1/2"	11'-0"	11'-0"	55.0
7	3"	11'-0"	11'-0"	66.0
8	3 1/2"	11'-0"	11'-0"	77.0
9	4"	11'-0"	11'-0"	88.0
10	4 1/2"	11'-0"	11'-0"	99.0
11	5"	11'-0"	11'-0"	110.0
12	5 1/2"	11'-0"	11'-0"	121.0
13	6"	11'-0"	11'-0"	132.0
14	6 1/2"	11'-0"	11'-0"	143.0
15	7"	11'-0"	11'-0"	154.0
16	7 1/2"	11'-0"	11'-0"	165.0
17	8"	11'-0"	11'-0"	176.0
18	8 1/2"	11'-0"	11'-0"	187.0
19	9"	11'-0"	11'-0"	198.0
20	9 1/2"	11'-0"	11'-0"	209.0
21	10"	11'-0"	11'-0"	220.0
22	10 1/2"	11'-0"	11'-0"	231.0
23	11"	11'-0"	11'-0"	242.0
24	11 1/2"	11'-0"	11'-0"	253.0
25	12"	11'-0"	11'-0"	264.0
26	12 1/2"	11'-0"	11'-0"	275.0
27	13"	11'-0"	11'-0"	286.0
28	13 1/2"	11'-0"	11'-0"	297.0
29	14"	11'-0"	11'-0"	308.0
30	14 1/2"	11'-0"	11'-0"	319.0
31	15"	11'-0"	11'-0"	330.0
32	15 1/2"	11'-0"	11'-0"	341.0
33	16"	11'-0"	11'-0"	352.0
34	16 1/2"	11'-0"	11'-0"	363.0
35	17"	11'-0"	11'-0"	374.0
36	17 1/2"	11'-0"	11'-0"	385.0
37	18"	11'-0"	11'-0"	396.0
38	18 1/2"	11'-0"	11'-0"	407.0
39	19"	11'-0"	11'-0"	418.0
40	19 1/2"	11'-0"	11'-0"	429.0
41	20"	11'-0"	11'-0"	440.0
42	20 1/2"	11'-0"	11'-0"	451.0
43	21"	11'-0"	11'-0"	462.0
44	21 1/2"	11'-0"	11'-0"	473.0
45	22"	11'-0"	11'-0"	484.0
46	22 1/2"	11'-0"	11'-0"	495.0
47	23"	11'-0"	11'-0"	506.0
48	23 1/2"	11'-0"	11'-0"	517.0
49	24"	11'-0"	11'-0"	528.0
50	24 1/2"	11'-0"	11'-0"	539.0
51	25"	11'-0"	11'-0"	550.0
52	25 1/2"	11'-0"	11'-0"	561.0
53	26"	11'-0"	11'-0"	572.0
54	26 1/2"	11'-0"	11'-0"	583.0
55	27"	11'-0"	11'-0"	594.0
56	27 1/2"	11'-0"	11'-0"	605.0
57	28"	11'-0"	11'-0"	616.0
58	28 1/2"	11'-0"	11'-0"	627.0
59	29"	11'-0"	11'-0"	638.0
60	29 1/2"	11'-0"	11'-0"	649.0
61	30"	11'-0"	11'-0"	660.0
62	30 1/2"	11'-0"	11'-0"	671.0
63	31"	11'-0"	11'-0"	682.0
64	31 1/2"	11'-0"	11'-0"	693.0
65	32"	11'-0"	11'-0"	704.0
66	32 1/2"	11'-0"	11'-0"	715.0
67	33"	11'-0"	11'-0"	726.0
68	33 1/2"	11'-0"	11'-0"	737.0
69	34"	11'-0"	11'-0"	748.0
70	34 1/2"	11'-0"	11'-0"	759.0
71	35"	11'-0"	11'-0"	770.0
72	35 1/2"	11'-0"	11'-0"	781.0
73	36"	11'-0"	11'-0"	792.0
74	36 1/2"	11'-0"	11'-0"	803.0
75	37"	11'-0"	11'-0"	814.0
76	37 1/2"	11'-0"	11'-0"	825.0
77	38"	11'-0"	11'-0"	836.0
78	38 1/2"	11'-0"	11'-0"	847.0
79	39"	11'-0"	11'-0"	858.0
80	39 1/2"	11'-0"	11'-0"	869.0
81	40"	11'-0"	11'-0"	880.0
82	40 1/2"	11'-0"	11'-0"	891.0
83	41"	11'-0"	11'-0"	902.0
84	41 1/2"	11'-0"	11'-0"	913.0
85	42"	11'-0"	11'-0"	924.0
86	42 1/2"	11'-0"	11'-0"	935.0
87	43"	11'-0"	11'-0"	946.0
88	43 1/2"	11'-0"	11'-0"	957.0
89	44"	11'-0"	11'-0"	968.0
90	44 1/2"	11'-0"	11'-0"	979.0
91	45"	11'-0"	11'-0"	990.0
92	45 1/2"	11'-0"	11'-0"	1001.0
93	46"	11'-0"	11'-0"	1012.0
94	46 1/2"	11'-0"	11'-0"	1023.0
95	47"	11'-0"	11'-0"	1034.0
96	47 1/2"	11'-0"	11'-0"	1045.0
97	48"	11'-0"	11'-0"	1056.0
98	48 1/2"	11'-0"	11'-0"	1067.0
99	49"	11'-0"	11'-0"	1078.0
100	49 1/2"	11'-0"	11'-0"	1089.0
101	50"	11'-0"	11'-0"	1100.0
102	50 1/2"	11'-0"	11'-0"	1111.0
103	51"	11'-0"	11'-0"	1122.0
104	51 1/2"	11'-0"	11'-0"	1133.0
105	52"	11'-0"	11'-0"	1144.0
106	52 1/2"	11'-0"	11'-0"	1155.0
107	53"	11'-0"	11'-0"	1166.0
108	53 1/2"	11'-0"	11'-0"	1177.0
109	54"	11'-0"	11'-0"	1188.0
110	54 1/2"	11'-0"	11'-0"	1199.0
111	55"	11'-0"	11'-0"	1210.0
112	55 1/2"	11'-0"	11'-0"	1221.0
113	56"	11'-0"	11'-0"	1232.0
114	56 1/2"	11'-0"	11'-0"	1243.0
115	57"	11'-0"	11'-0"	1254.0
116	57 1/2"	11'-0"	11'-0"	1265.0
117	58"	11'-0"	11'-0"	1276.0
118	58 1/2"	11'-0"	11'-0"	1287.0
119	59"	11'-0"	11'-0"	1298.0
120	59 1/2"	11'-0"	11'-0"	1309.0
121	60"	11'-0"	11'-0"	1320.0
122	60 1/2"	11'-0"	11'-0"	1331.0
123	61"	11'-0"	11'-0"	1342.0
124	61 1/2"	11'-0"	11'-0"	1353.0
125	62"	11'-0"	11'-0"	1364.0
126	62 1/2"	11'-0"	11'-0"	1375.0
127	63"	11'-0"	11'-0"	1386.0
128	63 1/2"	11'-0"	11'-0"	1397.0
129	64"	11'-0"	11'-0"	1408.0
130	64 1/2"	11'-0"	11'-0"	1419.0
131	65"	11'-0"	11'-0"	1430.0
132	65 1/2"	11'-0"	11'-0"	1441.0
133	66"	11'-0"	11'-0"	1452.0
134	66 1/2"	11'-0"	11'-0"	1463.0
135	67"	11'-0"	11'-0"	1474.0
136	67 1/2"	11'-0"	11'-0"	1485.0
137	68"	11'-0"	11'-0"	1496.0
138	68 1/2"	11'-0"	11'-0"	1507.0
139	69"	11'-0"	11'-0"	1518.0
140	69 1/2"	11'-0"	11'-0"	1529.0
141	70"	11'-0"	11'-0"	1540.0
142	70 1/2"	11'-0"	11'-0"	1551.0
143	71"	11'-0"	11'-0"	1562.0
144	71 1/2"	11'-0"	11'-0"	1573.0
145	72"	11'-0"	11'-0"	1584.0
146	72 1/2"	11'-0"	11'-0"	1595.0
147	73"	11'-0"	11'-0"	1606.0
148	73 1/2"	11'-0"	11'-0"	1617.0
149	74"	11'-0"	11'-0"	1628.0
150	74 1/2"	11'-0"	11'-0"	1639.0
151	75"	11'-0"	11'-0"	1650.0
152	75 1/2"	11'-0"	11'-0"	1661.0
153	76"	11'-0"	11'-0"	1672.0
154	76 1/2"	11'-0"	11'-0"	1683.0
155	77"	11'-0"	11'-0"	1694.0
156	77 1/2"	11'-0"	11'-0"	1705.0
157	78"	11'-0"	11'-0"	1716.0
158	78 1/2"	11'-0"	11'-0"	1727.0
159	79"	11'-0"	11'-0"	1738.0
160	79 1/2"	11'-0"	11'-0"	1749.0
161	80"	11'-0"	11'-0"	1760.0
162	80 1/2"	11'-0"	11'-0"	1771.0
163	81"	11'-0"	11'-0"	1782.0
164	81 1/2"	11'-0"	11'-0"	1793.0
165	82"	11'-0"	11'-0"	1804.0
166	82 1/2"	11'-0"	11'-0"	1815.0
167	83"	11'-0"	11'-0"	1826.0
168	83 1/2"	11'-0"	11'-0"	1837.0
169	84"	11'-0"	11'-0"	1848.0
170	84 1/2"	11'-0"	11'-0"	1859.0
171	85"	11'-0"	11'-0"	1870.0
172	85 1/2"	11'-0"	11'-0"	1881.0
173	86"	11'-0"	11'-0"	1892.0
174	86 1/2"	11'-0"	11'-0"	1903.0
175	87"	11'-0"	11'-0"	1914.0
176	87 1/2"	11'-0"	11'-0"	1925.0
177	88"	11'-0"	11'-0"	1936.0
178	88 1/2"	11'-0"	11'-0"	1947.0
179	89"	11'-0"	11'-0"	1958.0
180	89 1/2"	11'-0"	11'-0"	1969.0
181	90"	11'-0"	11'-0"	1980.0
182	90 1/2"	11'-0"	11'-0"	1991.0
183	91"	11'-0"	11'-0"	2002.0
184	91 1/2"	11'-0"	11'-0"	2013.0
185	92"	11'-0"	11'-0"	2024.0
186	92 1/2"	11'-0"	11'-0"	2035.0
187	93"	11'-0"	11'-0"	2046.0
188	93 1/2"	11'-0"	11'-0"	2057.0
189	94"	11'-0"	11'-0"	2068.0
190	94 1/2"	11'-0"	11'-0"	2079.0
191	95"	11'-0"	11'-0"	2090.0
192	95 1/2"	11'-0"	11'-0"	2101.0
193	96"	11'-0"	11'-0"	2112.0
194	96 1/2"	11'-0"	11'-0"	2123.0
195	97"	11'-0"	11'-0"	2134.0
196	97 1/2"	11'-0"	11'-0"	2145.0
197	98"	11'-0"	11'-0"	2156.0
198	98 1/2"	11'-0"	11'-0"	2167.0
199	99"	11'-0"	11'-0"	2178.0
200	99 1/2"	11'-0"	11'-0"	2189.0
201	100"	11'-0"	11'-0"	2200.0

**CONCRETE SCHEDULE**

1. ALL CONCRETE SHALL BE 3000 P.S.I. STRENGTH.

2. ALL CONCRETE SHALL BE PLACED IN 4" MINIMUM THICKNESS.

3. ALL CONCRETE SHALL BE CURVED AND PROTECTED FOR 14 DAYS.

4. ALL CONCRETE SHALL BE FINISHED WITH A SMOOTH SURFACE.

5. ALL CONCRETE SHALL BE REINFORCED WITH #4 BARS.

6. ALL CONCRETE SHALL BE PLACED IN 4" MINIMUM THICKNESS.

7. ALL CONCRETE SHALL BE CURVED AND PROTECTED FOR 14 DAYS.

8. ALL CONCRETE SHALL BE FINISHED WITH A SMOOTH SURFACE.

9. ALL CONCRETE SHALL BE REINFORCED WITH #4 BARS.

10. ALL CONCRETE SHALL BE PLACED IN 4" MINIMUM THICKNESS.

11. ALL CONCRETE SHALL BE CURVED AND PROTECTED FOR 14 DAYS.

12. ALL CONCRETE SHALL BE FINISHED WITH A SMOOTH SURFACE.

13. ALL CONCRETE SHALL BE REINFORCED WITH #4 BARS.

14. ALL CONCRETE SHALL BE PLACED IN 4" MINIMUM THICKNESS.

15. ALL CONCRETE SHALL BE CURVED AND PROTECTED FOR 14 DAYS.

16. ALL CONCRETE SHALL BE FINISHED WITH A SMOOTH SURFACE.

17. ALL CONCRETE SHALL BE REINFORCED WITH #4 BARS.

18. ALL CONCRETE SHALL BE PLACED IN 4" MINIMUM THICKNESS.

19. ALL CONCRETE SHALL BE CURVED AND PROTECTED FOR 14 DAYS.

20. ALL CONCRETE SHALL BE FINISHED WITH A SMOOTH SURFACE.

21. ALL CONCRETE SHALL BE REINFORCED WITH #4 BARS.

22. ALL CONCRETE SHALL BE PLACED IN 4" MINIMUM THICKNESS.

23. ALL CONCRETE SHALL BE CURVED AND PROTECTED FOR 14 DAYS.

24. ALL CONCRETE SHALL BE FINISHED WITH A SMOOTH SURFACE.

25. ALL CONCRETE SHALL BE REINFORCED WITH #4 BARS.

26. ALL CONCRETE SHALL BE PLACED IN 4" MINIMUM THICKNESS.

27. ALL CONCRETE SHALL BE CURVED AND PROTECTED FOR 14 DAYS.

28. ALL CONCRETE SHALL BE FINISHED WITH A SMOOTH SURFACE.

29. ALL CONCRETE SHALL BE REINFORCED WITH #4 BARS.

30. ALL CONCRETE SHALL BE PLACED IN 4" MINIMUM THICKNESS.

31. ALL CONCRETE SHALL BE CURVED AND PROTECTED FOR 14 DAYS.

32. ALL CONCRETE SHALL BE FINISHED WITH A SMOOTH SURFACE.

33. ALL CONCRETE SHALL BE REINFORCED WITH #4 BARS.

34. ALL CONCRETE SHALL BE PLACED IN 4" MINIMUM THICKNESS.

35. ALL CONCRETE SHALL BE CURVED AND PROTECTED FOR 14 DAYS.

36. ALL CONCRETE SHALL BE FINISHED WITH A SMOOTH SURFACE.

37. ALL CONCRETE SHALL BE REINFORCED WITH #4 BARS.

38. ALL CONCRETE SHALL BE PLACED IN 4" MINIMUM THICKNESS.

39. ALL CONCRETE SHALL BE CURVED AND PROTECTED FOR 14 DAYS.

40. ALL CONCRETE SHALL BE FINISHED WITH A SMOOTH SURFACE.

41. ALL CONCRETE SHALL BE REINFORCED WITH #4 BARS.

42. ALL CONCRETE SHALL BE PLACED IN 4" MINIMUM THICKNESS.

43. ALL CONCRETE SHALL BE CURVED AND PROTECTED FOR 14 DAYS.

44. ALL CONCRETE SHALL BE FINISHED WITH A SMOOTH SURFACE.

45. ALL CONCRETE SHALL BE REINFORCED WITH #4 BARS.

46. ALL CONCRETE SHALL BE PLACED IN 4" MINIMUM THICKNESS.

47. ALL CONCRETE SHALL BE CURVED AND PROTECTED FOR 14 DAYS.

48. ALL CONCRETE SHALL BE FINISHED WITH A SMOOTH SURFACE.

49. ALL CONCRETE SHALL BE REINFORCED WITH #4 BARS.

50. ALL CONCRETE SHALL BE PLACED IN 4" MINIMUM THICKNESS.

51. ALL CONCRETE SHALL BE CURVED AND PROTECTED FOR 14 DAYS.

52. ALL CONCRETE SHALL BE FINISHED WITH A SMOOTH SURFACE.

53. ALL CONCRETE SHALL BE REINFORCED WITH #4 BARS.

54. ALL CONCRETE SHALL BE PLACED IN 4" MINIMUM THICKNESS.

55. ALL CONCRETE SHALL BE CURVED AND PROTECTED FOR 14 DAYS.

56. ALL CONCRETE SHALL BE FINISHED WITH A SMOOTH SURFACE.

57. ALL CONCRETE SHALL BE REINFORCED WITH #4 BARS.

58. ALL CONCRETE SHALL BE PLACED IN 4" MINIMUM THICKNESS.

59. ALL CONCRETE SHALL BE CURVED AND PROTECTED FOR 14 DAYS.

60. ALL CONCRETE SHALL BE FINISHED WITH A SMOOTH SURFACE.

61. ALL CONCRETE SHALL BE REINFORCED WITH #4 BARS.

62. ALL CONCRETE SHALL BE PLACED IN 4" MINIMUM THICKNESS.

63. ALL CONCRETE SHALL BE CURVED AND PROTECTED FOR 14 DAYS.

64. ALL CONCRETE SHALL BE FINISHED WITH A SMOOTH SURFACE.

65. ALL CONCRETE SHALL BE REINFORCED WITH #4 BARS.

66. ALL CONCRETE SHALL BE PLACED IN 4" MINIMUM THICKNESS.

67. ALL CONCRETE SHALL BE CURVED AND PROTECTED FOR 14 DAYS.

68. ALL CONCRETE SHALL BE FINISHED WITH A SMOOTH SURFACE.

69. ALL CONCRETE SHALL BE REINFORCED WITH #4 BARS.

70. ALL CONCRETE SHALL BE PLACED IN 4" MINIMUM THICKNESS.

71. ALL CONCRETE SHALL BE CURVED AND PROTECTED FOR 14 DAYS.

72. ALL CONCRETE SHALL BE FINISHED WITH A SMOOTH SURFACE.

73. ALL CONCRETE SHALL BE REINFORCED WITH #4 BARS.

74. ALL CONCRETE SHALL BE PLACED IN 4" MINIMUM THICKNESS.

75. ALL CONCRETE SHALL BE CURVED AND PROTECTED FOR 14 DAYS.

76. ALL CONCRETE SHALL BE FINISHED WITH A SMOOTH SURFACE.

77. ALL CONCRETE SHALL BE REINFORCED WITH #4 BARS.

78. ALL CONCRETE SHALL BE PLACED IN 4" MINIMUM THICKNESS.

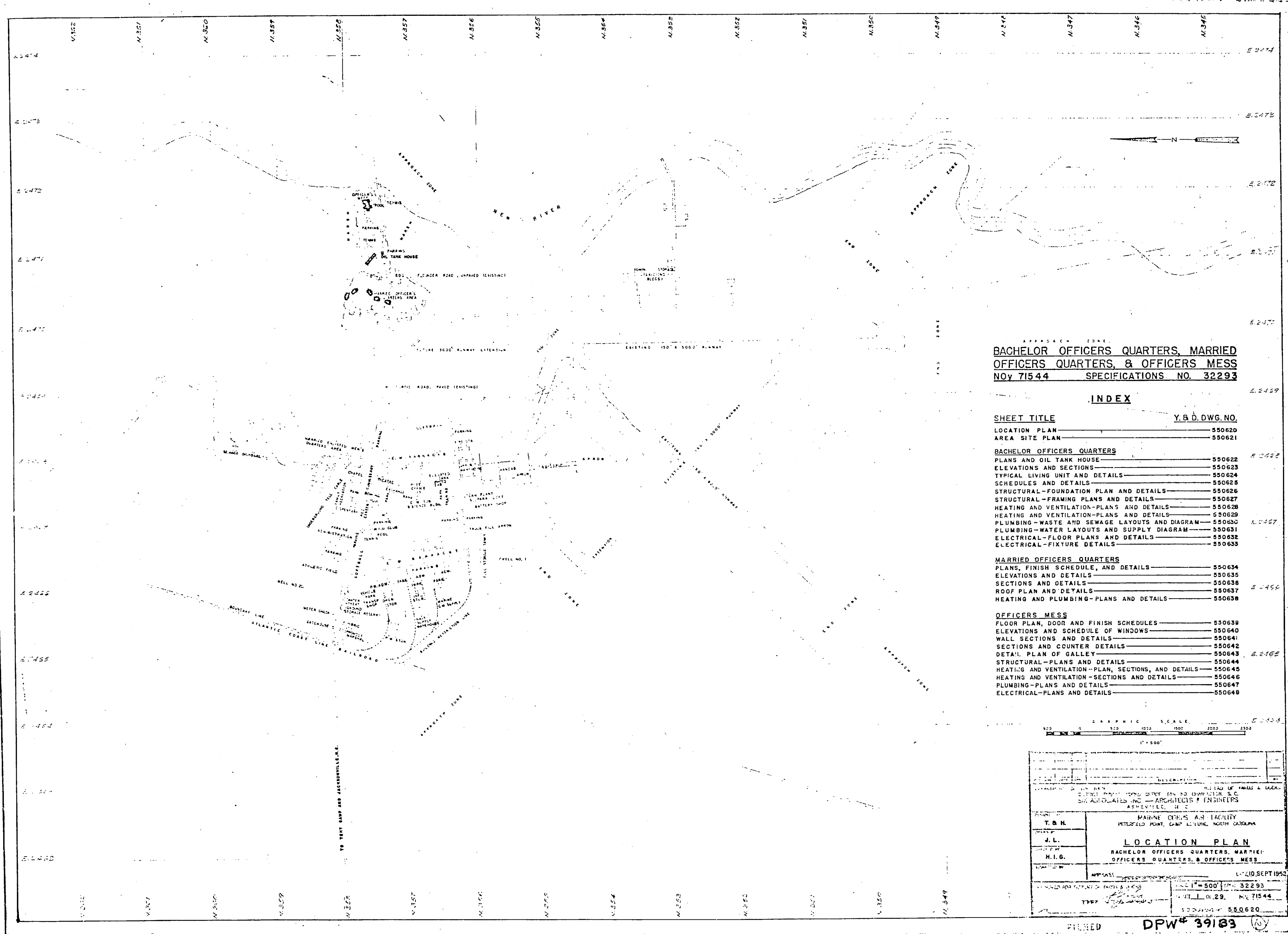
79. ALL CONCRETE SHALL BE CURVED AND PROTECTED FOR 14 DAYS.

80. ALL CONCRETE SHALL BE FINISHED WITH A SMOOTH SURFACE.

81. ALL CONCRETE SHALL BE REINFORCED WITH #4 BARS.

82. ALL CONCRETE SHALL BE PLACED IN 4" MINIMUM

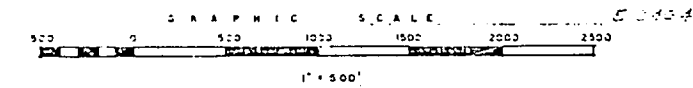




**BACHELOR OFFICERS QUARTERS, MARRIED OFFICERS QUARTERS, & OFFICERS MESS**  
**NOV 71544 SPECIFICATIONS NO. 32293**

**INDEX**

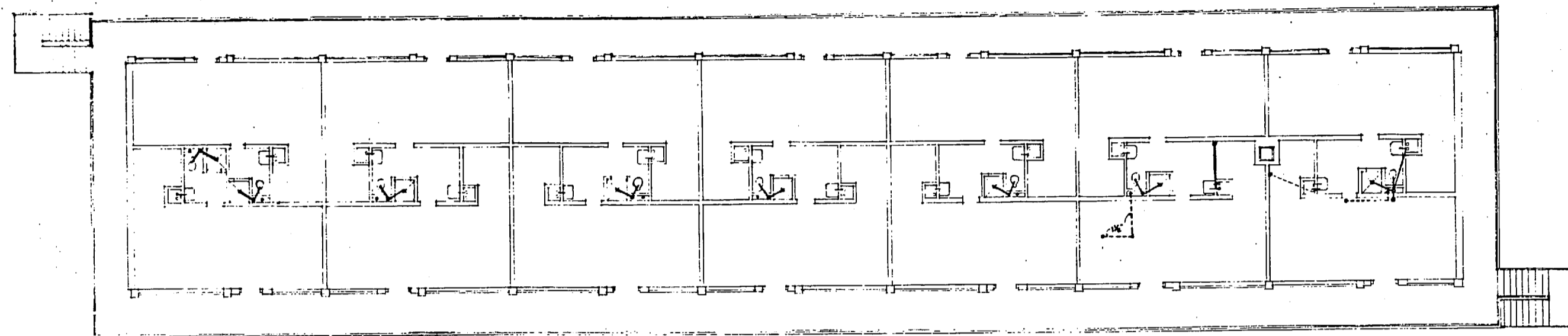
SHEET TITLE	Y.B.D. DWS. NO.
LOCATION PLAN	550620
AREA SITE PLAN	550621
<b>BACHELOR OFFICERS QUARTERS</b>	
PLANS AND OIL TANK HOUSE	550622
ELEVATIONS AND SECTIONS	550623
TYPICAL LIVING UNIT AND DETAILS	550624
SCHEDULES AND DETAILS	550625
STRUCTURAL-FOUNDATION PLAN AND DETAILS	550626
STRUCTURAL-FRAMING PLANS AND DETAILS	550627
HEATING AND VENTILATION-PLANS AND DETAILS	550628
HEATING AND VENTILATION-PLANS AND DETAILS	550629
PLUMBING-WASTE AND SEWAGE LAYOUTS AND DIAGRAM	550630
PLUMBING-WATER LAYOUTS AND SUPPLY DIAGRAM	550631
ELECTRICAL-FLOOR PLANS AND DETAILS	550632
ELECTRICAL-FIXTURE DETAILS	550633
<b>MARRIED OFFICERS QUARTERS</b>	
PLANS, FINISH SCHEDULE, AND DETAILS	550634
ELEVATIONS AND DETAILS	550635
SECTIONS AND DETAILS	550636
ROOF PLAN AND DETAILS	550637
HEATING AND PLUMBING-PLANS AND DETAILS	550638
<b>OFFICERS MESS</b>	
FLOOR PLAN, DOOR AND FINISH SCHEDULES	550639
ELEVATIONS AND SCHEDULE OF WINDOWS	550640
WALL SECTIONS AND DETAILS	550641
SECTIONS AND COUNTER DETAILS	550642
DETAIL PLAN OF GALLEY	550643
STRUCTURAL-PLANS AND DETAILS	550644
HEATING AND VENTILATION-PLAN, SECTIONS, AND DETAILS	550645
HEATING AND VENTILATION-SECTIONS AND DETAILS	550646
PLUMBING-PLANS AND DETAILS	550647
ELECTRICAL-PLANS AND DETAILS	550648



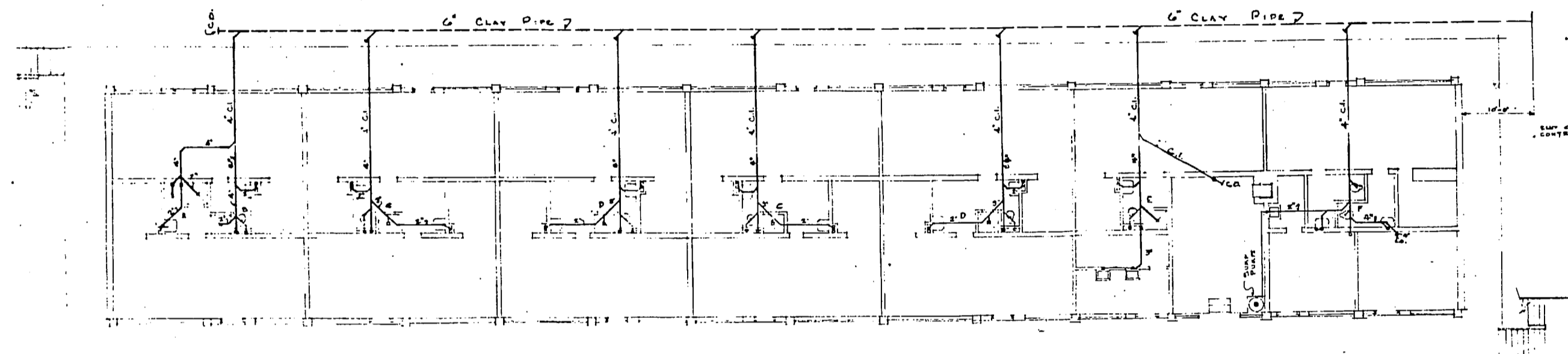
T. B. H. ARCHITECTS & ENGINEERS 1111 N. 22nd St., Norfolk, Va.		MARINE OVERS A FACILITY PREFERRED POINT CAMP ACTIVE, NORTH CAROLINA
<b>LOCATION PLAN</b> BACHELOR OFFICERS QUARTERS, MARRIED OFFICERS QUARTERS, & OFFICERS MESS		
DATE: 11-10-54 DRAWN BY: [Signature] CHECKED BY: [Signature]	SHEET NO. 500 TOTAL SHEETS 32293	DATE: 11-10-54 NO. 71544

AS-7027  
 AS-704  
 AS-705

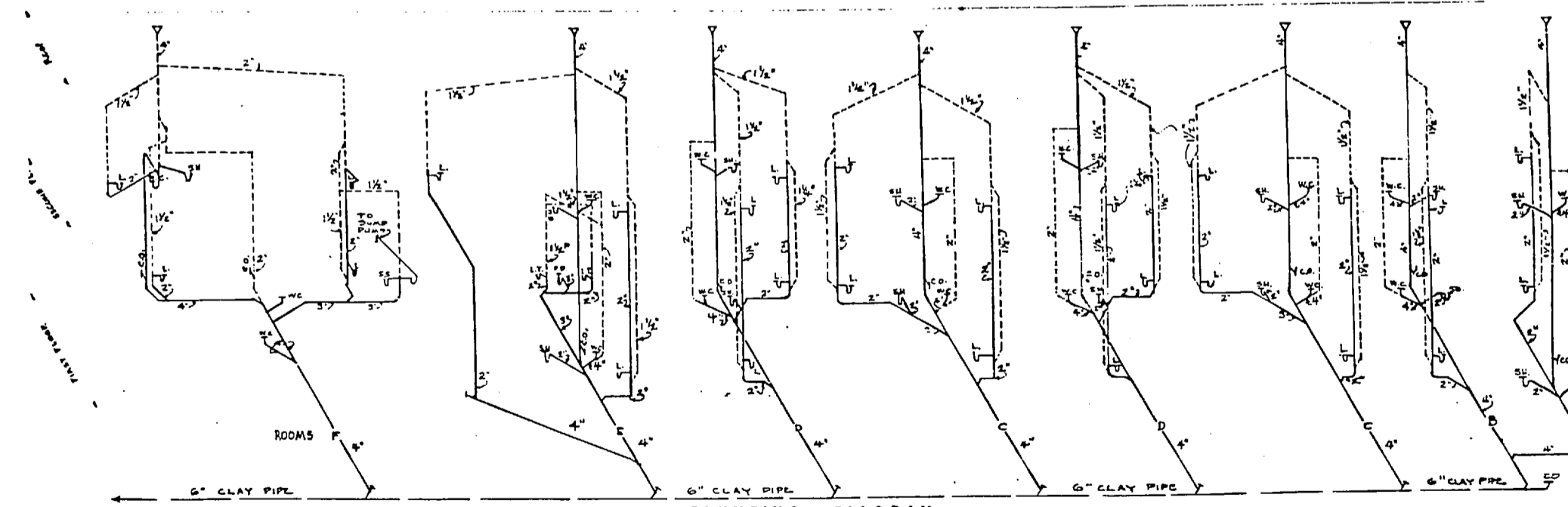




SECOND FLOOR PLAN  
SCALE 1/8" = 1'-0"



FIRST FLOOR PLAN  
SCALE 1/8" = 1'-0"



PLUMBING DIAGRAM  
NO SCALE



**PLUMBING SYMBOLS**

WASTE
WATER
COLD WATER
HOT WATER
HOT WATER CIRCULATING
F.D. FLOOR DRAIN
L. LAVATORY
S.H. SINK
W.C. WATER CLOSET
C.S. CLEAN OUT
S.S. SERVICE SINK
L.T. LAUNDRY TRAY
N.R. WATER RESERVANT

**EQUIPMENT SCHEDULE**  
 1. HOT WATER CIRCULATING PUMP: 10 G.P.M. 812' HEAD - MOTOR - 1/8 H.P. - 110 VOLT - 60 CYCLE - SINGLE PHASE.  
 2. SUMP PUMP: 20 G.P.M. 50' HEAD - MOTOR - 1/2 H.P. - 110 VOLT - 60 CYCLE - SINGLE PHASE.

DEPARTMENT OF THE ARMY ENGINEERING CENTER SIXTH AVENUE, NEW YORK, N.Y.	BUREAU OF TANKS & DOCKS SOUTH BAY, WASHINGTON, D.C.
DESIGNED BY T. H.	PROJECT BACHELOR OFFICERS QUARTERS
CHECKED BY J. K. W.	PLUMBING - WASTE AND SEWAGE LAYOUTS AND DIAGRAM
DATE NOV 15 1944	T & O DRAWING NO. 350830

FILM: DPN 39193

