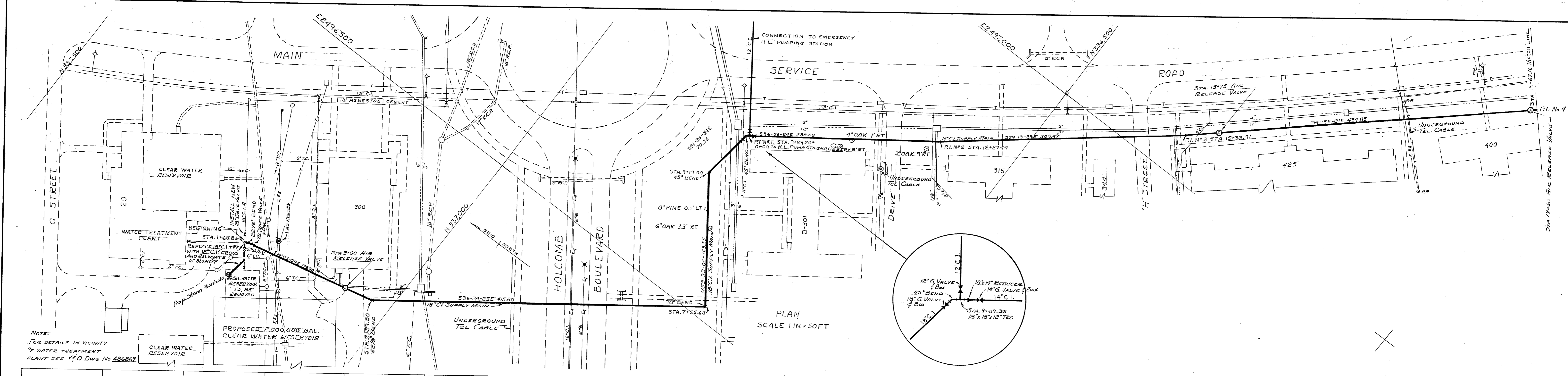
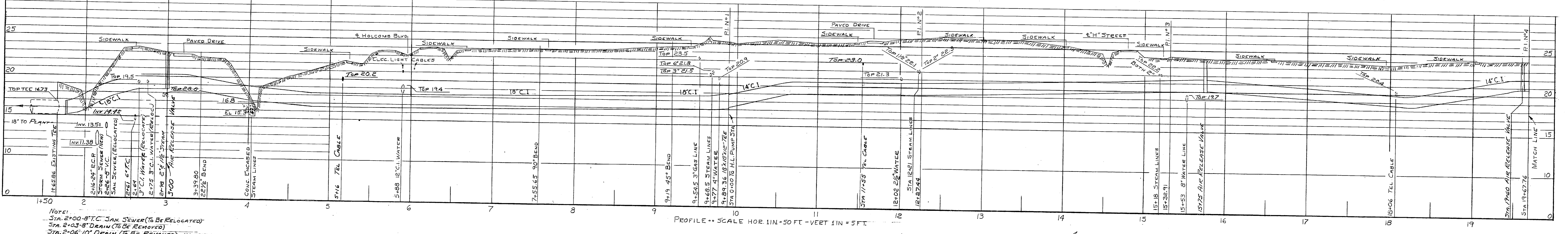


REVISION	DATE	APPD.	DESCRIPTION	BY
C	29-1-52	JJK	NOTE ADDED	
B	29-1-52	JJK	FRAMING ALTERATIONS AT POLE "A"	
A	8-12-51	WMB	NOTES ALTERED	

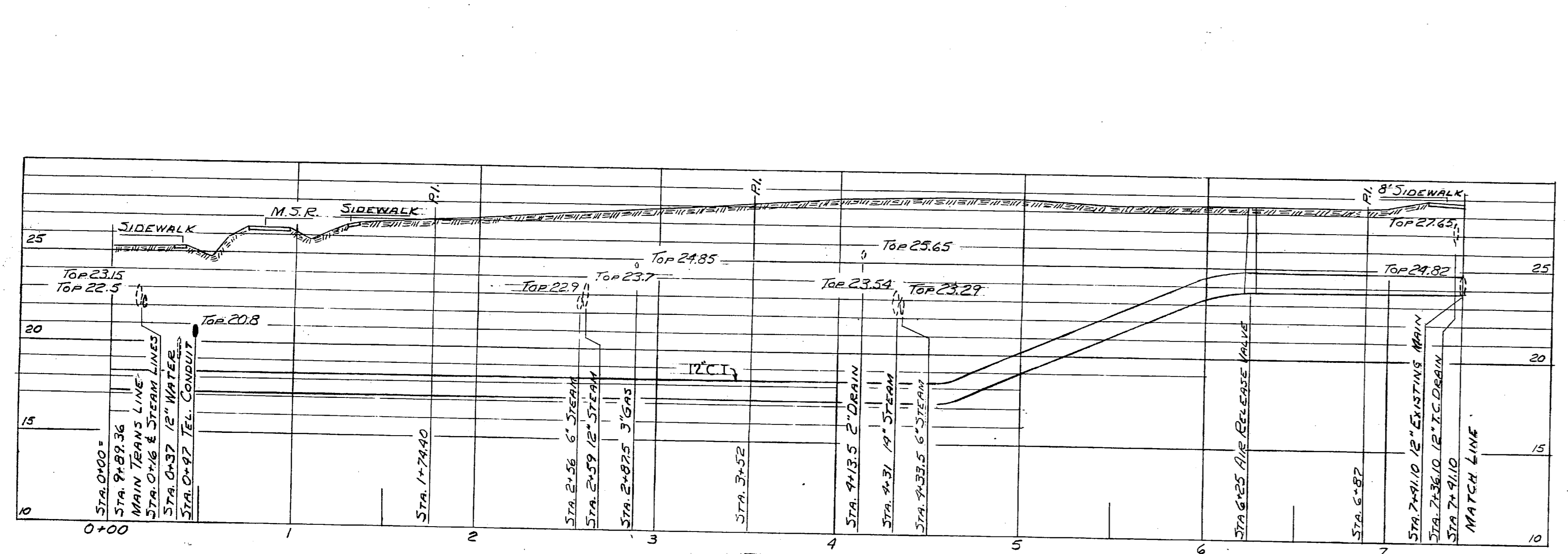
P.W. DRAWING NO. 7864		MARINE BARRACKS CAMP LEJEUNE, N. C.	
DESIGNED BY: [Signature]		CORRECTION OF DEFICIENCIES IN RAW WATER SUPPLY SYSTEM PLAN, PROFILE AND ELECTRICAL DISTRIBUTION	
DRAWN BY: [Signature]		APPROVED: E.R. Smith PUBLIC WORKS OFFICER	
CHECKED BY: [Signature]		DATE: 3/7/51	
SUPERVISOR: [Signature]		SCALE: 7/8"=20' NO. 27079	
DATE: [Blank]		SHEET 7 OF 20 NO. 44977	
THE QUARTERMASTER GENERAL OF THE MARINE CORPS		Y&D DRAWING NO. 486864	



Note:
FOR DETAILS IN VICINITY
OF WATER TREATMENT
PLANT SEE Y&D DWG No 486862

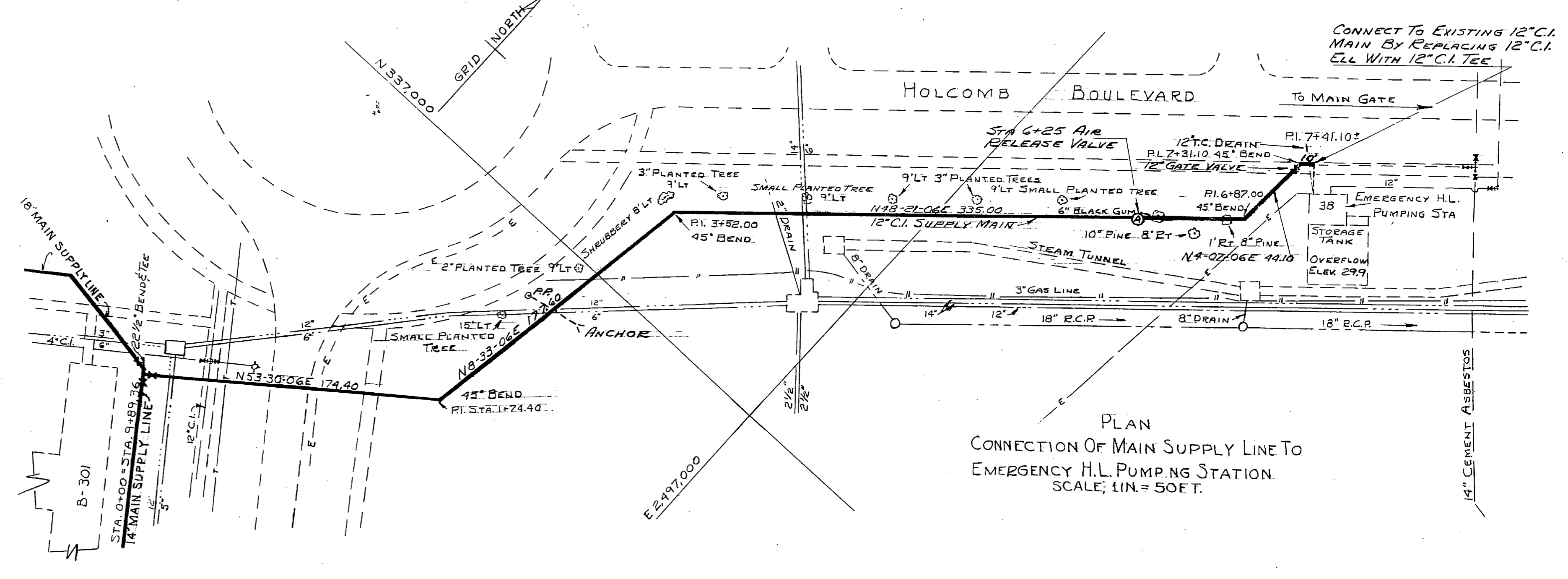


Note:
Sta. 2+00-8\"/>



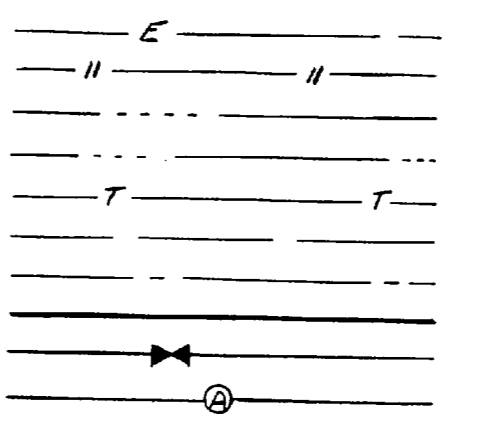
PROFILE
CONNECTION OF MAIN SUPPLY LINE TO
EMERGENCY H.L. PUMPING STATION
SCALE: HOR. 1 IN. = 50 FT. VERT. 1 IN. = 5 FT.

Notes: For Detail of Air Release
Valve & Manhole See Y&D
Dwg No. 486868



PLAN
CONNECTION OF MAIN SUPPLY LINE TO
EMERGENCY H.L. PUMPING STATION
SCALE: 1 IN. = 50 FT.

- LEGEND
- EXISTING UNDERGROUND ELEC. LINE
 - EXISTING FRESH WATER
 - EXISTING HIGH PRESSURE STEAM (FEED)
 - EXISTING HIGH PRESSURE TELEPHONE
 - EXISTING FRESH WATER
 - EXISTING SEWER MAINS
 - PROPOSED RAW WATER SUPPLY MAIN
 - PROPOSED GATE VALVE
 - PROPOSED AIR RELEASE VALVE



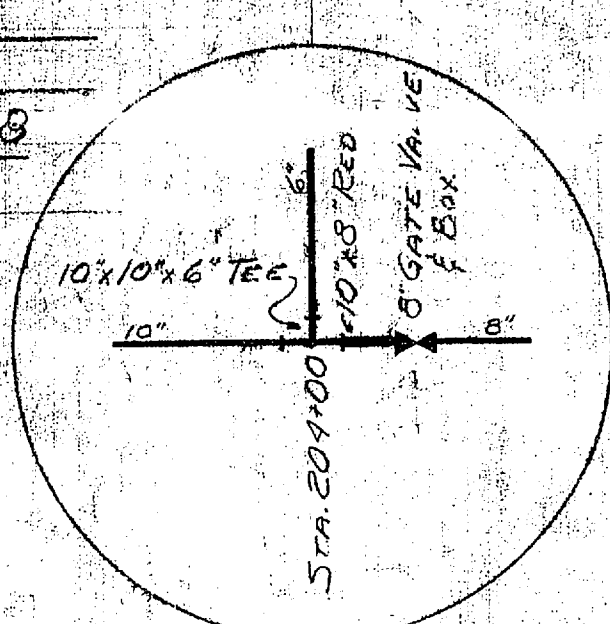
REVISION	DATE	APPD.	DESCRIPTION	BY
PW DRAWING NO. 7859				
MARINE BARRACKS CAMP LEJEUNE, N. C.				
CORRECTION OF DEFICIENCIES IN RAW WATER SUPPLY SYSTEM PLAN AND PROFILE				
DESIGNED BY <i>[Signature]</i>		APPROVED <i>E. L. Bennett</i> DATE 3/7/51		
DRAWN BY <i>[Signature]</i>		PUBLIC WORKS OFFICER		
CHECKED BY <i>[Signature]</i>		SCALE As Shown SPEC 27079		
SUPERVISOR <i>[Signature]</i>		SHEET 2 OF 20 NOV 24 1951		
THE QUARTERMASTER GENERAL OF THE MARINE CORPS				
DATE		Y&D DRAWING NO. 486859		

3-5KVA-12470 VOLT 1Ø TRANSFORMERS
 3 WIRE DELTA PRIMARY 120/208 3Ø-4W
 3 WIRE SECONDARY 3 C.O.S. 3 L.A.S
 25 AMP FUSE (MAX. 25 OHMS) 1Ø GROUND
 DELTA WIRE-GND WIRE HOLDING

4" N.P.M. C.C. 30" BELOW
 GRADE 10' 1/2" CROSSTED
 PLANK COVER. CONDUIT SLEEVE
 INTO BLDG. AND UP POLE WITH
 W.C.

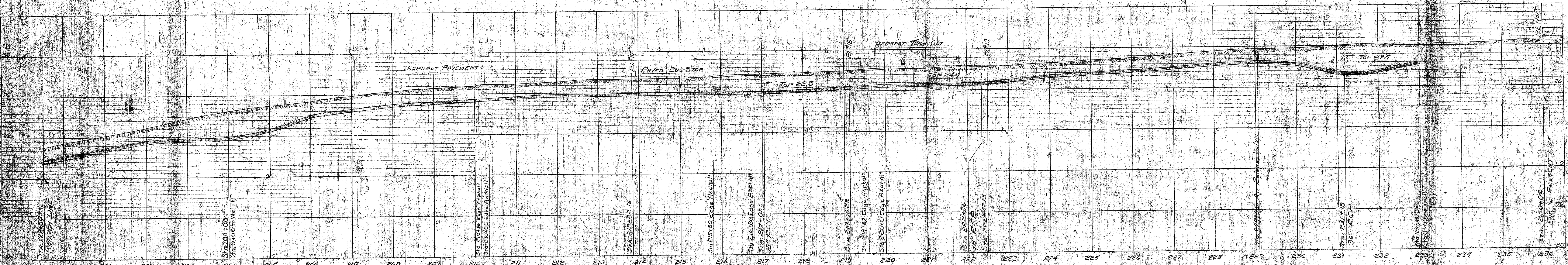
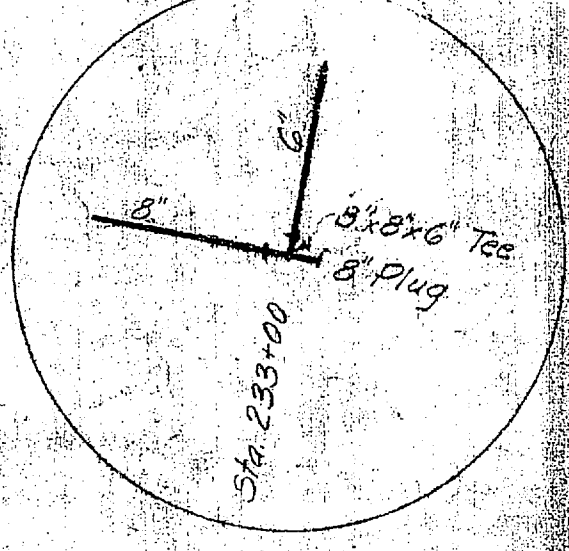
3-5KVA-12470 VOLT 1Ø TRANSFORMERS
 3 WIRE DELTA PRIMARY 120/208 3Ø-4W
 3 WIRE SECONDARY 3 C.O.S. 3 L.A.S- GROUND
 FUSE (MAX. 25 OHMS) 1Ø GND WIRE
 SECOND WIRE HOLDING

ELECTRICAL
 DISTRIBUTION
 WELL "E" # 628
 SCALE 1"=100'-0"



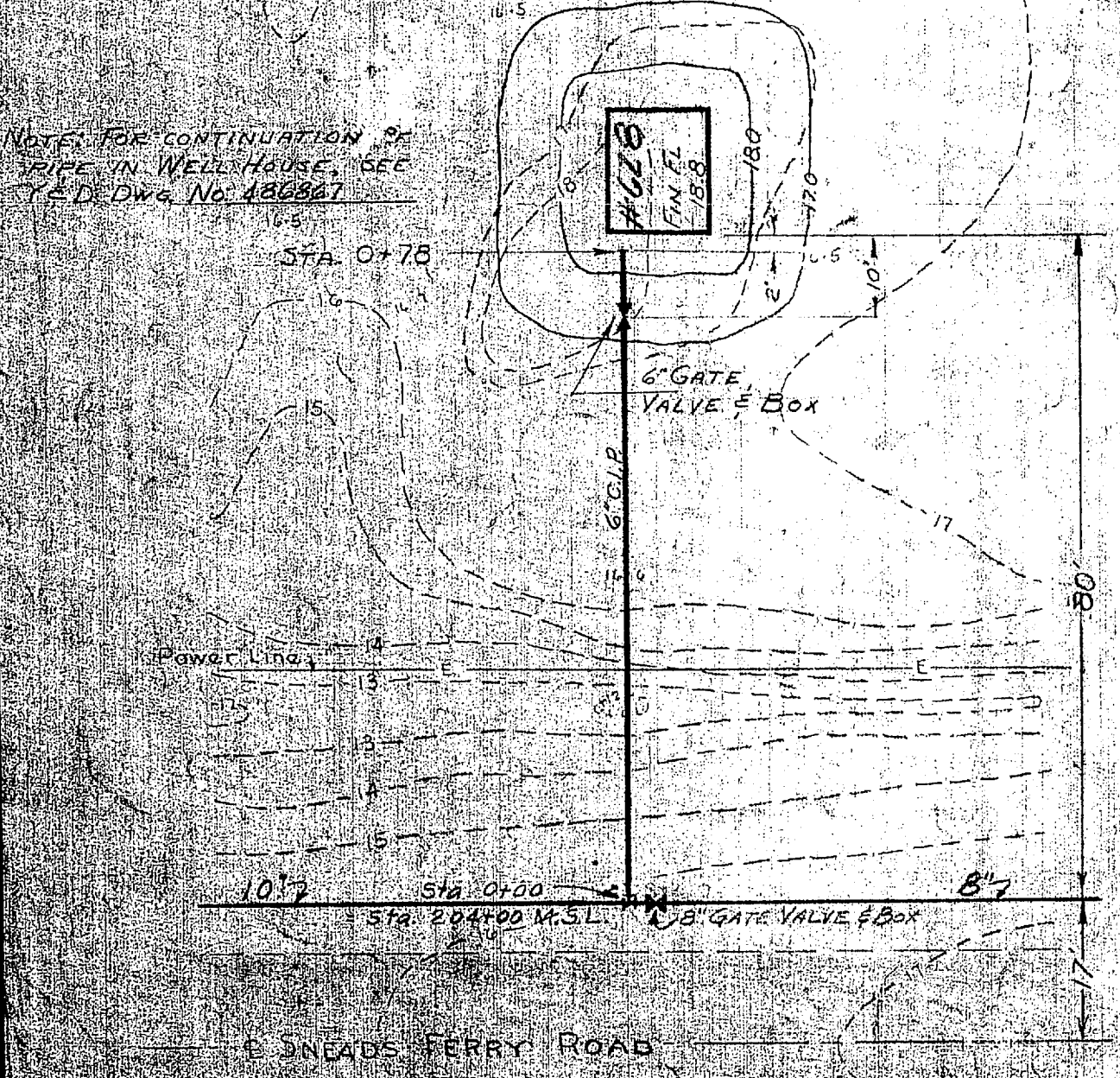
PLAN
 SCALE 1"=100' FT

ELECTRICAL
 DISTRIBUTION
 WELL "E" # 628
 SCALE 1"=100'-0"

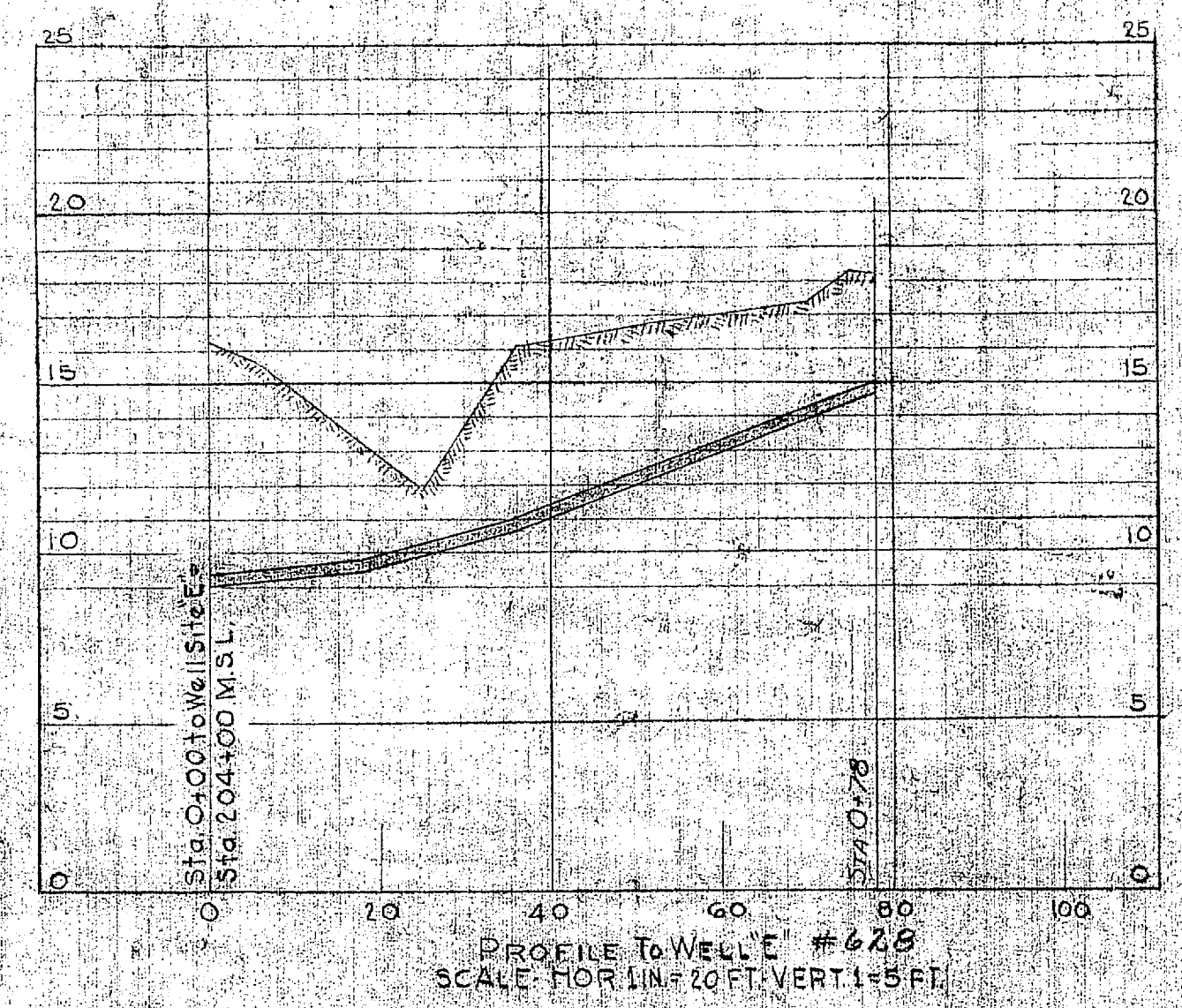


PROFILE
 SCALE: HOR. 1"=100' VERT. 1"=10'-0"

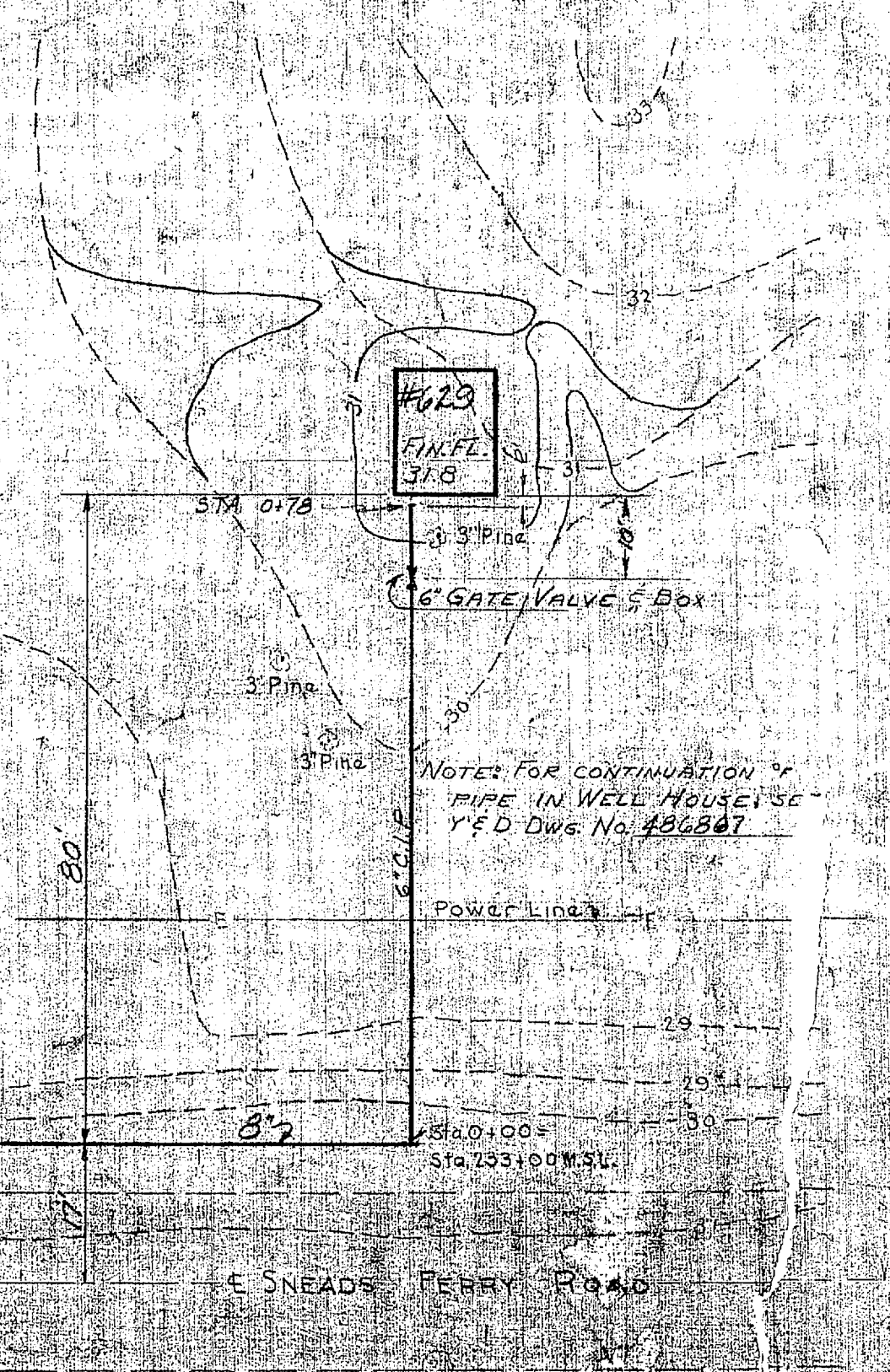
LEGEND
 EXISTING CONTOUR LINES
 PROPOSED CONTOUR LINES
 PROPOSED RAW WATER SUPPLY MAIN
 PROPOSED AIR RELEASE VALVES
 PROPOSED GATE VALVES



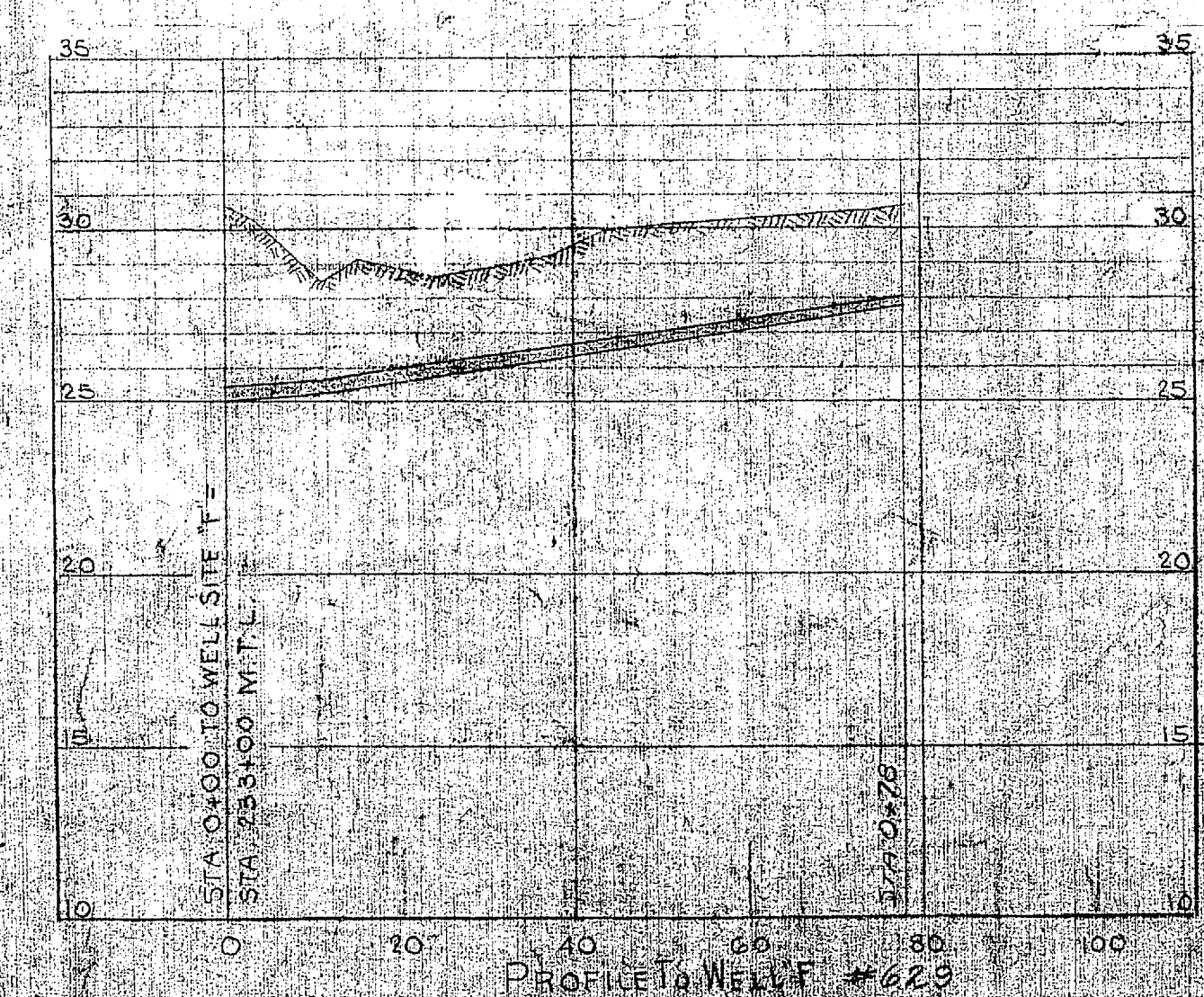
PLAN WELL SITE # 628
 SCALE 1"=20' FT



PROFILE TO WELL # 628
 SCALE: HOR. 1"=20' VERT. 1"=5'-0"

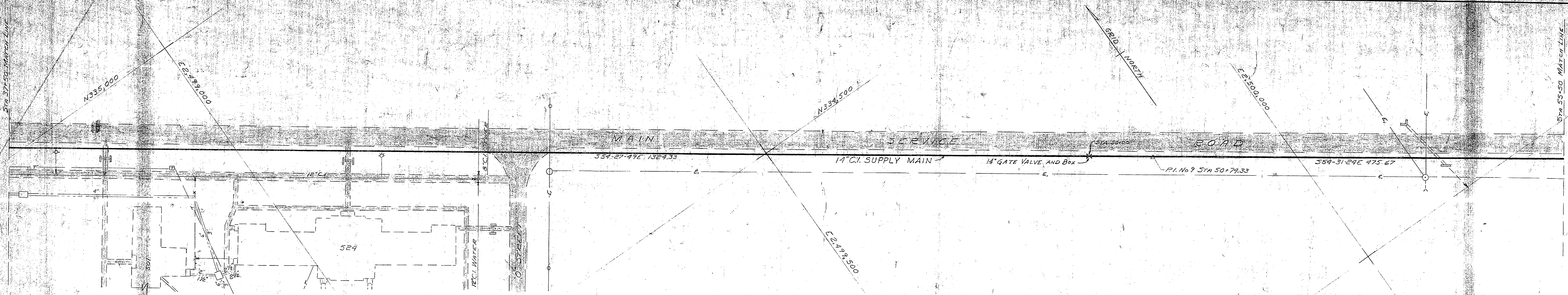


PLAN WELL SITE # 629
 SCALE 1"=20' FT

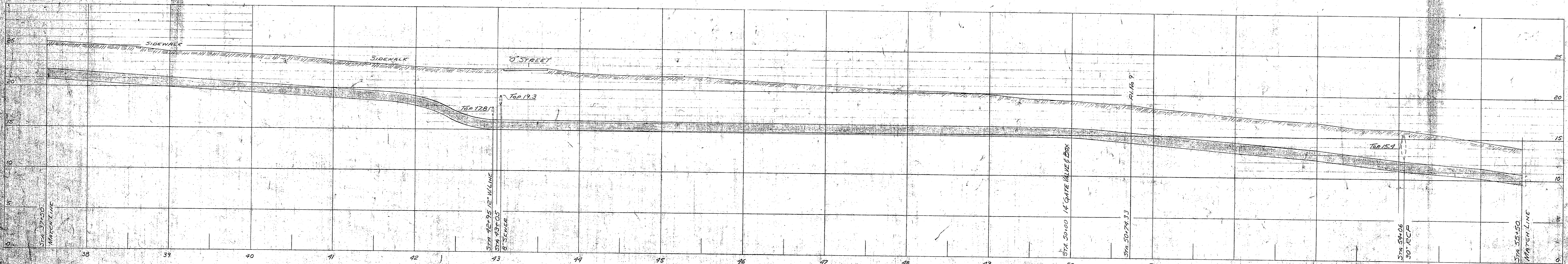


PROFILE TO WELL # 629
 SCALE: HOR. 1"=20' VERT. 1"=5'-0"

REVISION	DATE	APPD.	DESCRIPTION
P.W. DRAWING NO. 7866			DESCRIPTION MARINE BARRACKS CAMP LEJEUNE, N.C.
DESIGNED BY			CORRECTION OF DEFICIENCIES IN RAW WATER SUPPLY SYSTEM
DRAWN BY			PLAN PROFILE AND ELECTRICAL DISTRIBUTION
CHECKED BY			
APPROVED			APPROVED
IN CHARGE			PUBLIC WORKS OFFICER
SCALE 1/8"=1'-0"			SCALE 1/8"=1'-0"
SHEET 9 OF 20			SPEC. 27078 NOV 28 1977
THE QUARTERMASTER GENERAL OF THE MARINE CORPS			P.W. DRAWING NO. 486866

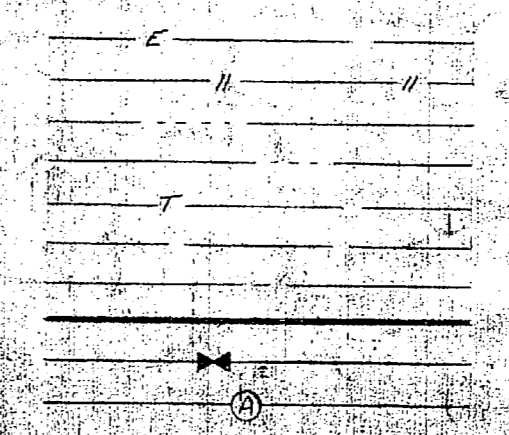


PLAN
SCALE: 1 IN = 50 FT



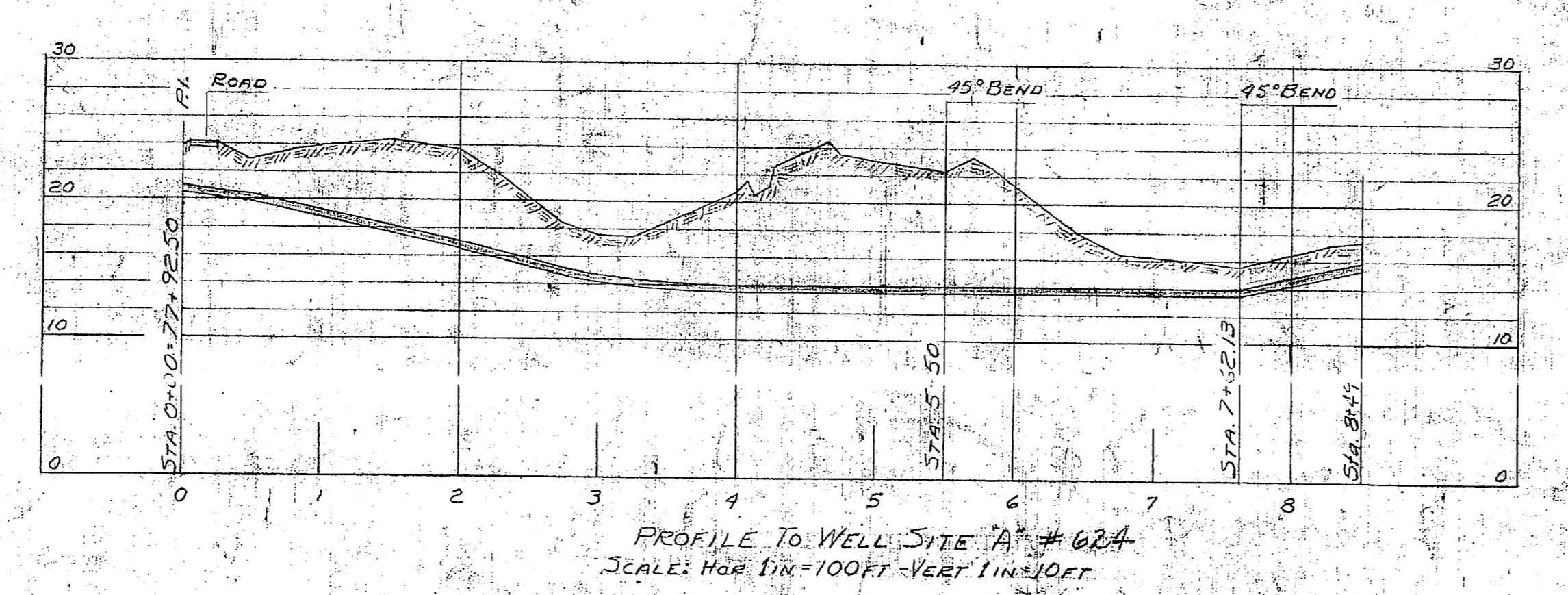
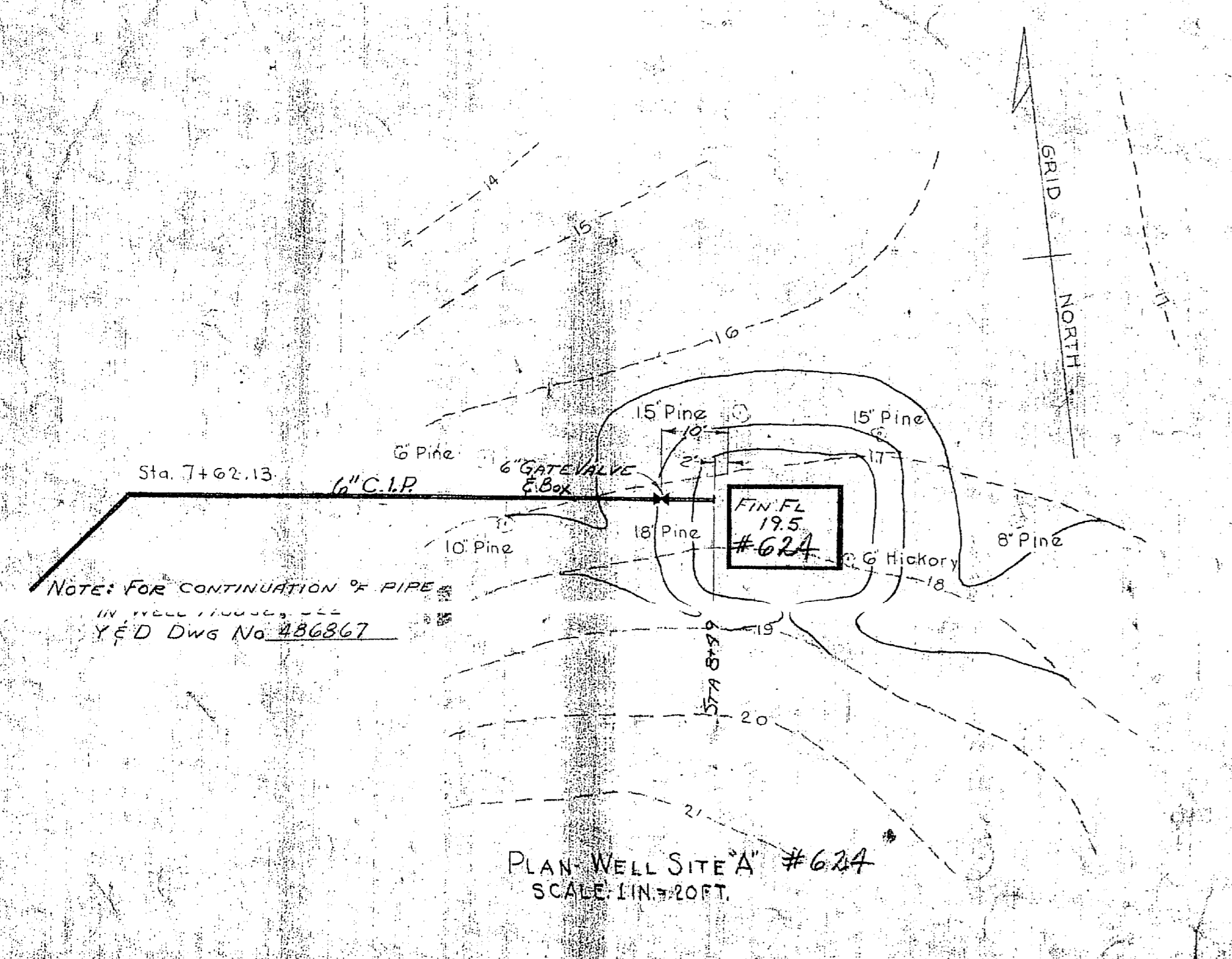
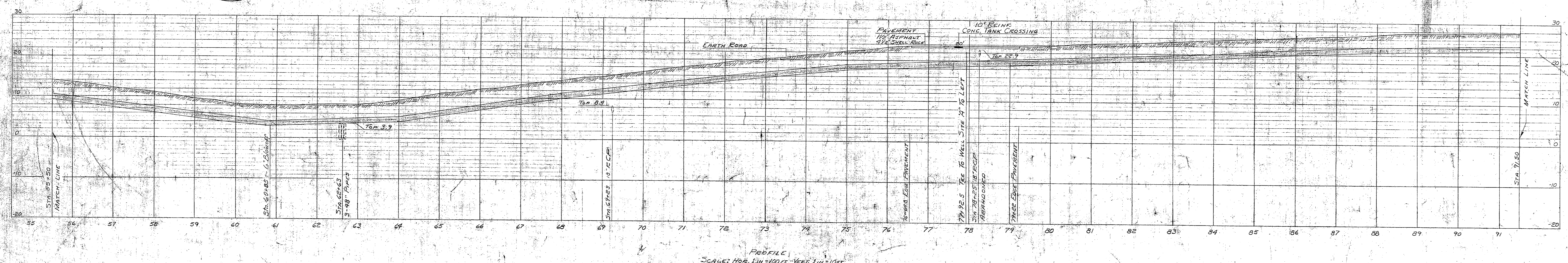
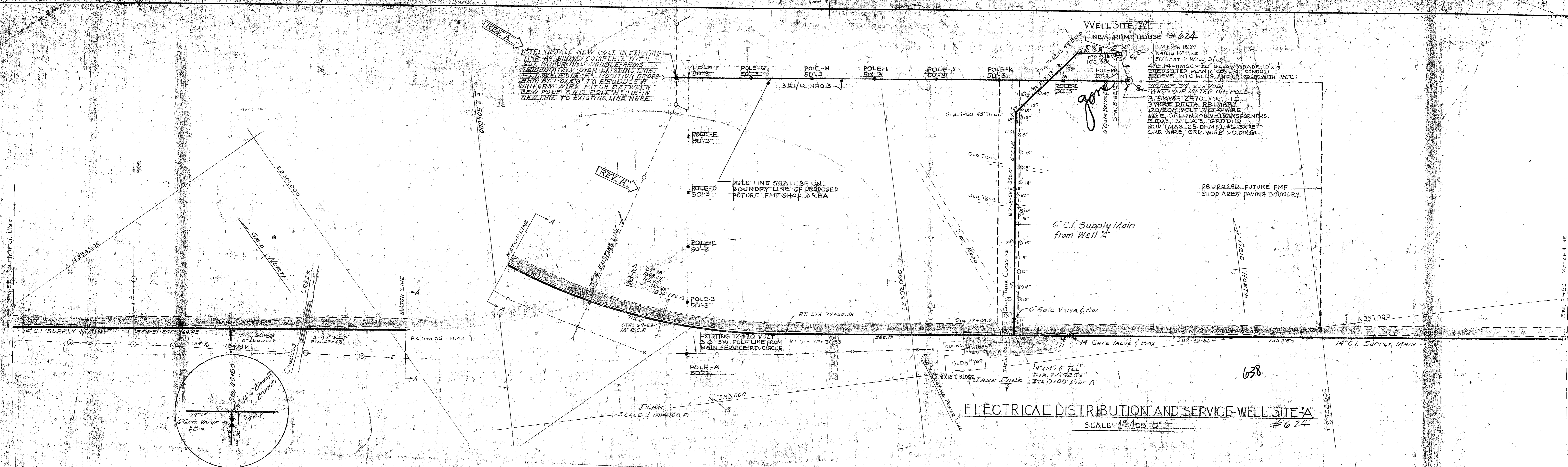
PROFILE
SCALE: HOR. 1 IN = 50 FT VERT. 1 IN = 5 FT

- LEGEND**
- EXISTING UNDERGROUND Elec. LINE
 - EXISTING FIRELINE GAS
 - EXISTING HIGH PRESSURE STEAM (FEED)
 - EXISTING HIGH PRESSURE STEAM (RETURN)
 - EXISTING UNDERGROUND TELEPHONE
 - EXISTING FRESH WATER
 - EXISTING SEWER MAINS
 - PROPOSED RAW WATER SUPPLY MAIN
 - PROPOSED GATE VALVES
 - PROPOSED AIR RELEASE VALVES



REVISION	DATE	APPD.	DESCRIPTION	BY
P.W. DRAWING NO. 7861			MARINE BARRACKS CAMP LEJEUNE, N. C.	
DESIGNED BY: [Signature]			CORRECTION OF DEFICIENCIES IN RAW WATER SYSTEM RAW WATER SUPPLY SYSTEM PLAN AND PROFILE	
DRAWN BY: [Signature]				
CHECKED BY: [Signature]				
SUPERVISED BY: [Signature]				
APPROVED: [Signature]			DATE: 5/1/51	
APPROVED: [Signature]			SCALE: AS SHOWN	SPEC: 270-78
THE QUARTERMASTER GENERAL THE MARINE CORPS			SHEET 4 OF 20	NOV 24 1951
DATE:			Y & D DRAWING NO. 486861	

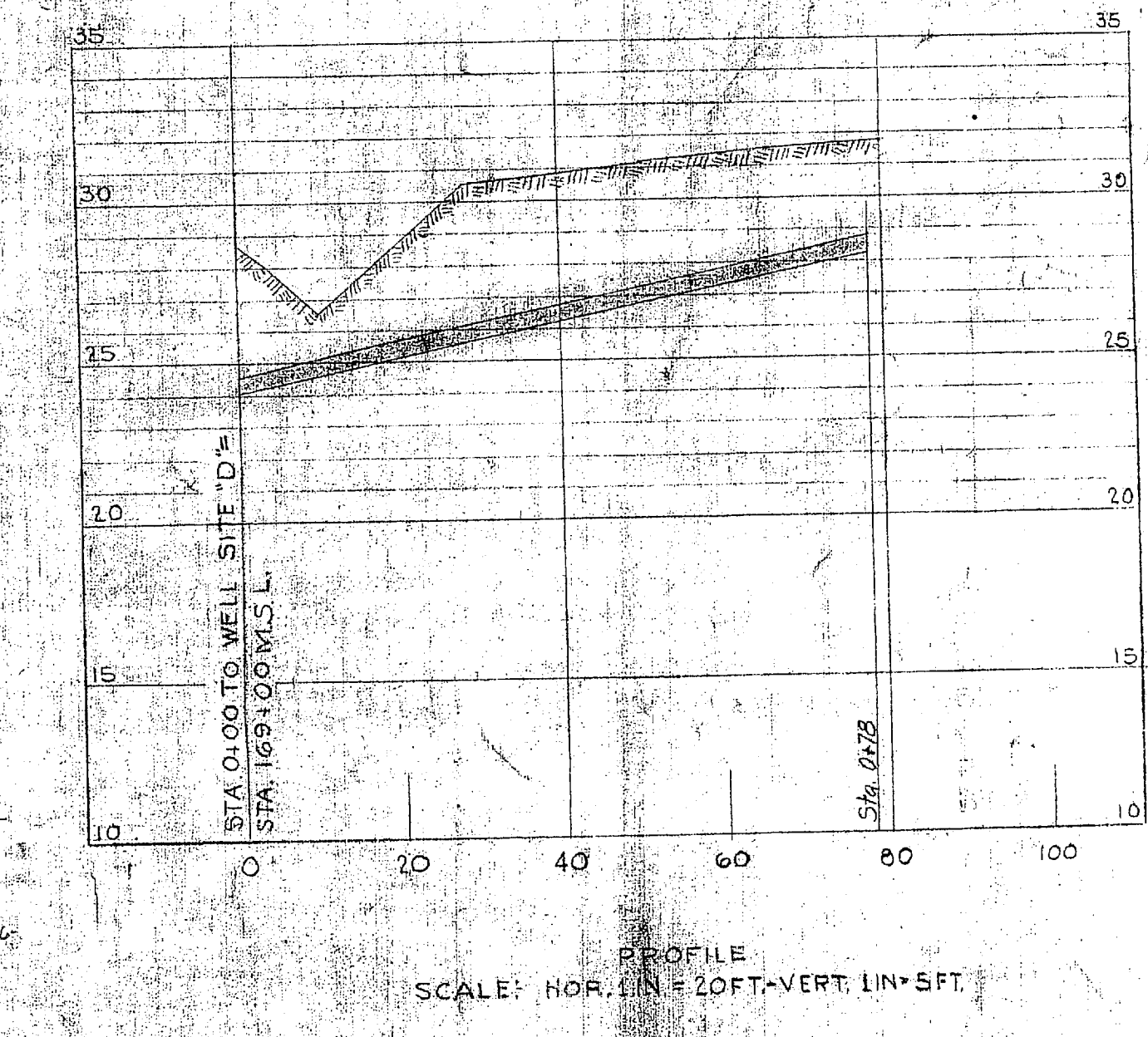
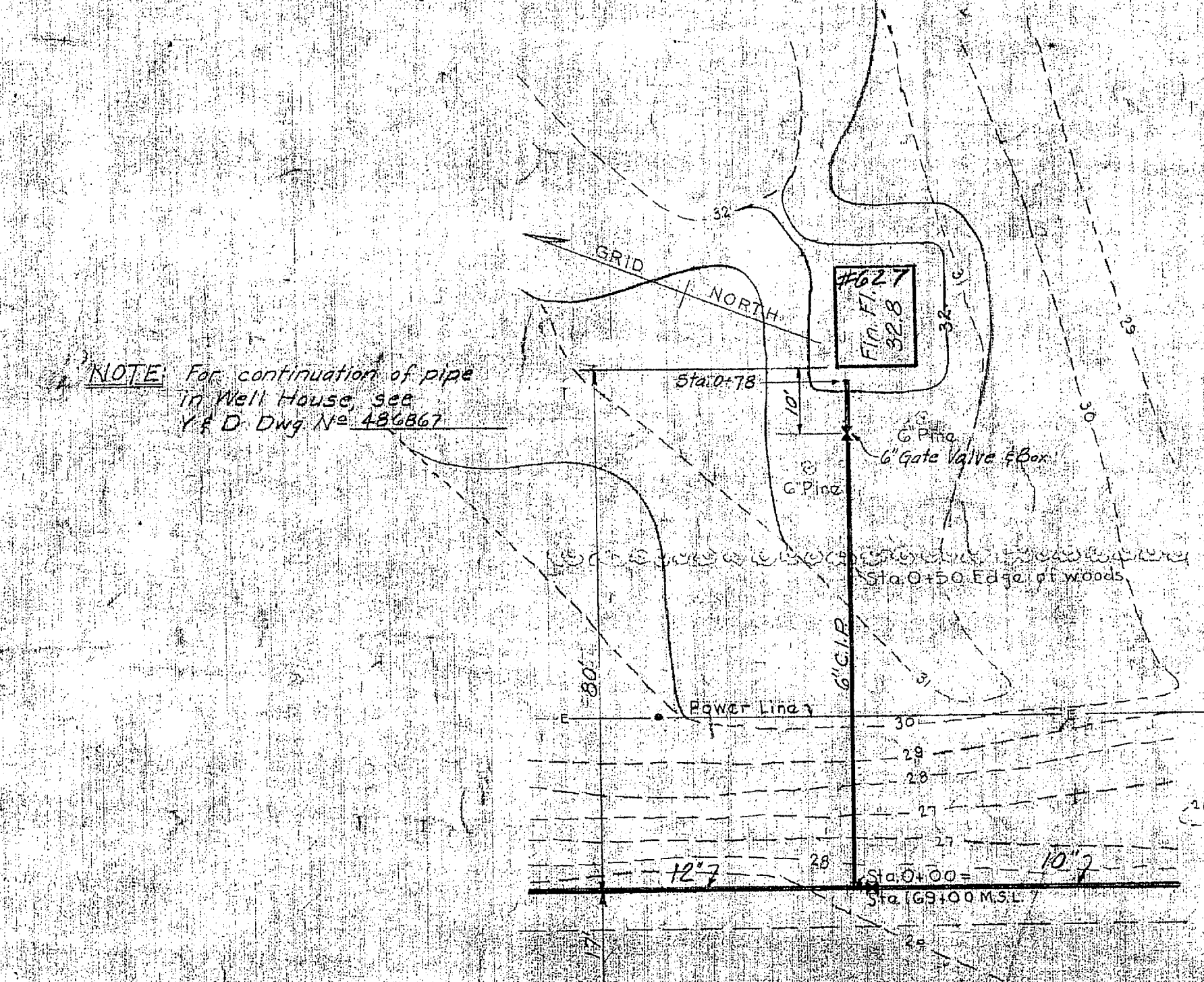
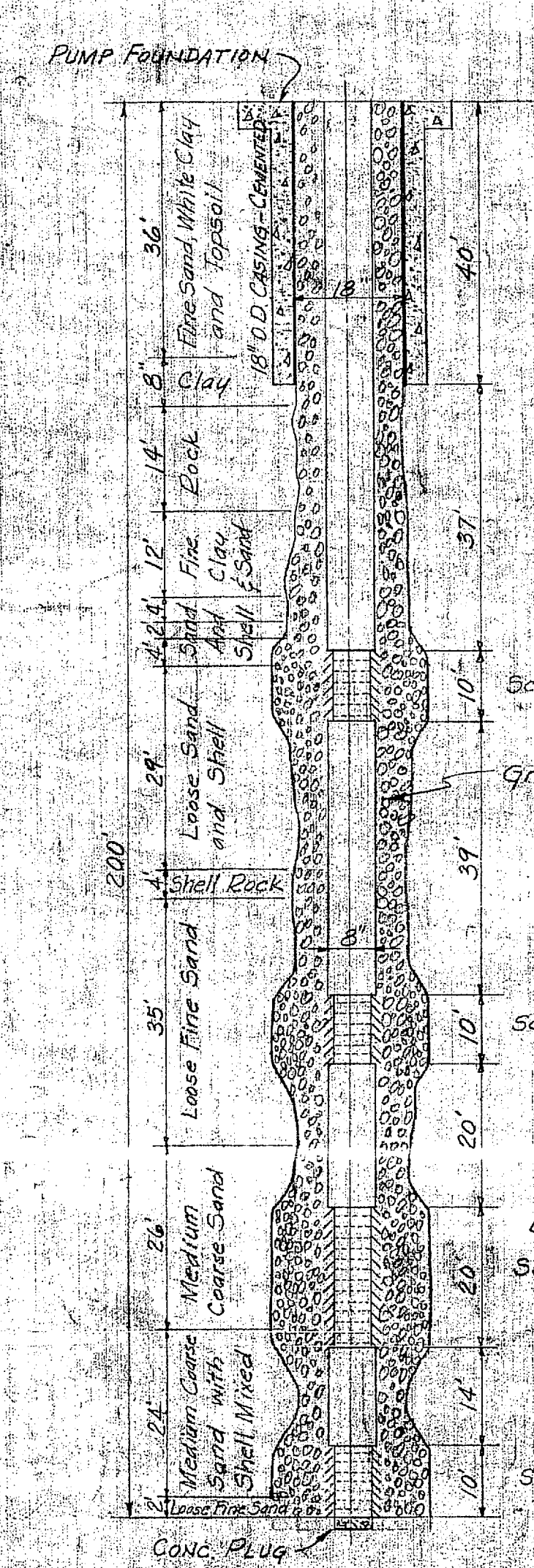
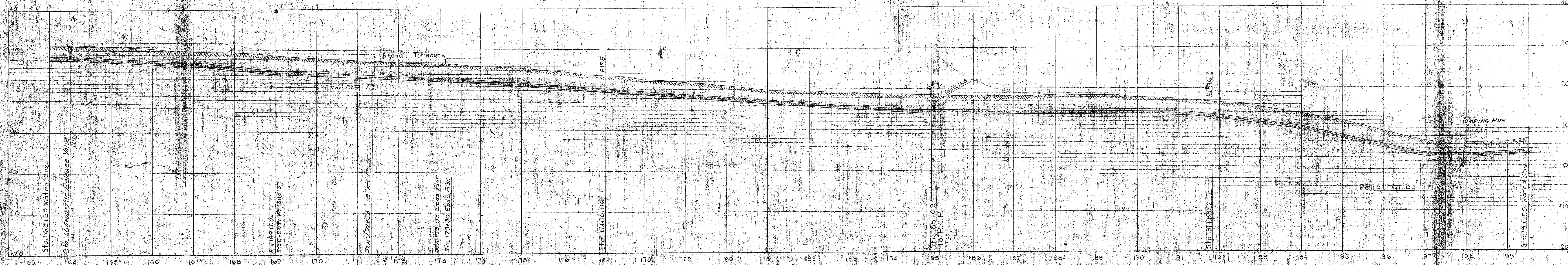
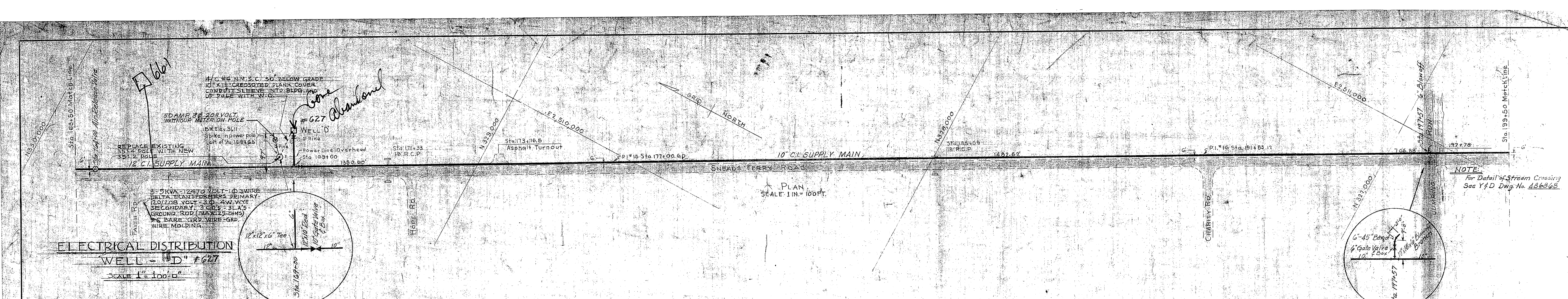




- EXISTING CONTOUR LINES
- PROPOSED CONTOUR LINES
- PROPOSED RAIN/WATER SUPPLY MAIN
- PROPOSED GATE VALVES
- PROPOSED AIR RELEASE VALVES
- EXISTING OVERHEAD ELECTRIC LINE
- PROPOSED OVERHEAD ELECTRIC LINE

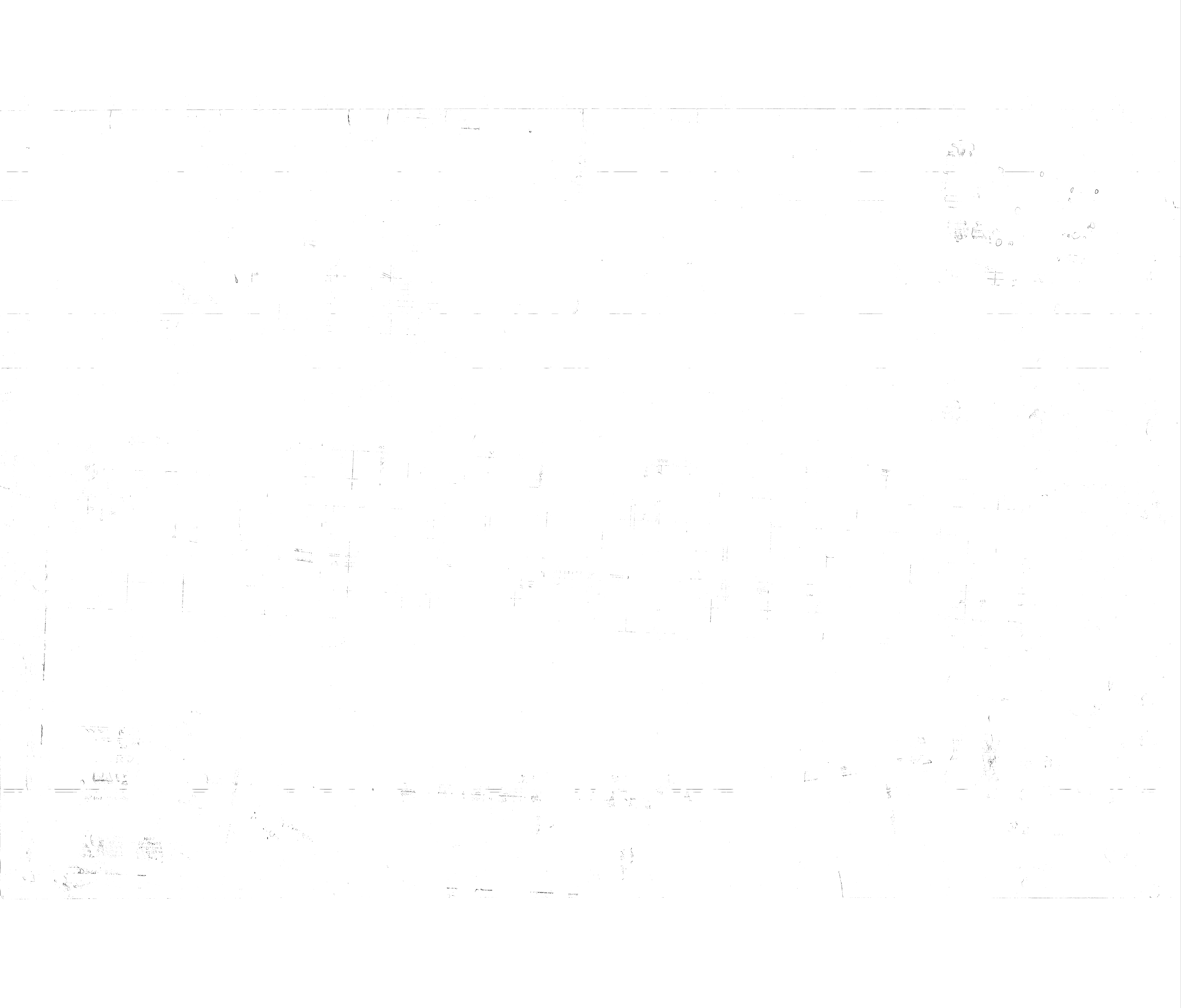
REVISION	DATE	APPROV.	DESCRIPTION	BY
1	30-1-50	AKK	ADDITION OF EXISTING POWER LINE AND NOTE	JAK
P.W. DRAWING NO. 7862				
DESCRIPTION MARINE BARRACKS CAMP LEJEUNE, N. C.				
CORRECTION OF DEFICIENCIES IN RAW WATER SUPPLY SYSTEM				
RAW WATER SUPPLY SYSTEM PLAN, PROFILE AND ELECTRICAL DISTRIBUTION				
APPROVED <i>E.K. Bennett</i>			DATE 3/7/51	
IN CHARGE <i>J.P. ...</i>			PUBLIC WORKS OFFICER	
APPROVED			SCALE 2 1/2" = 1'	
THE QUARTERMASTER GENERAL OF THE MARINE CORPS			SPEC 27079 SHEET 5 OF 20 NOV 24 1947	
DATE			A. D. DRAWING NO. 486862	

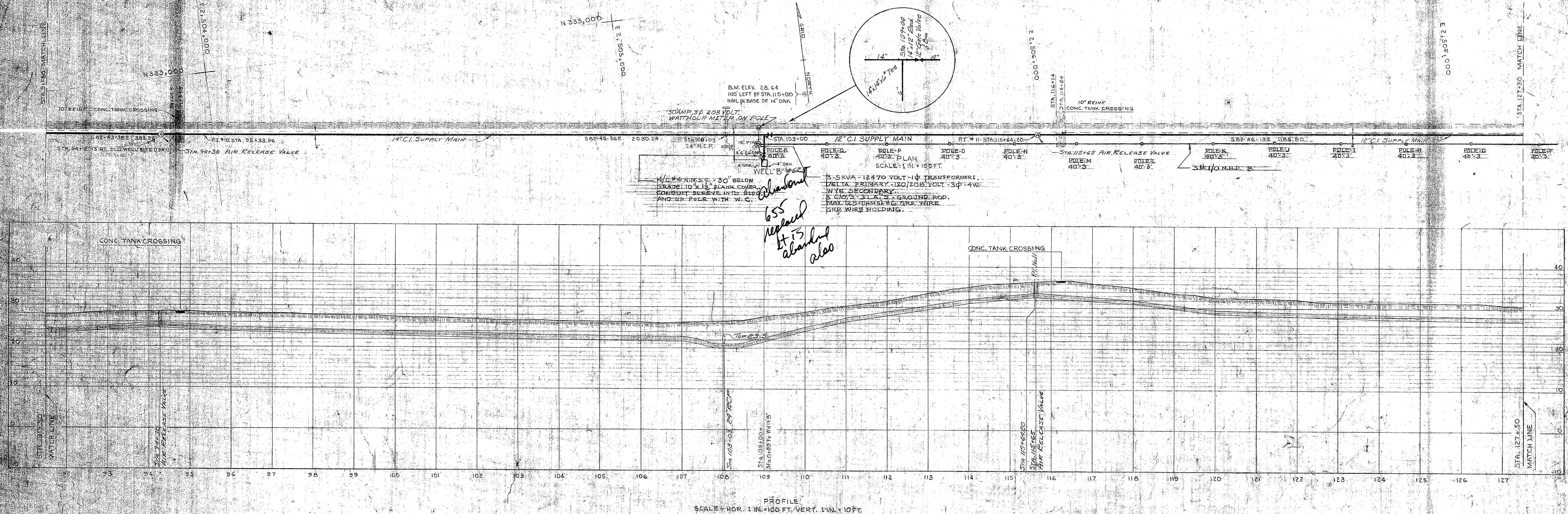




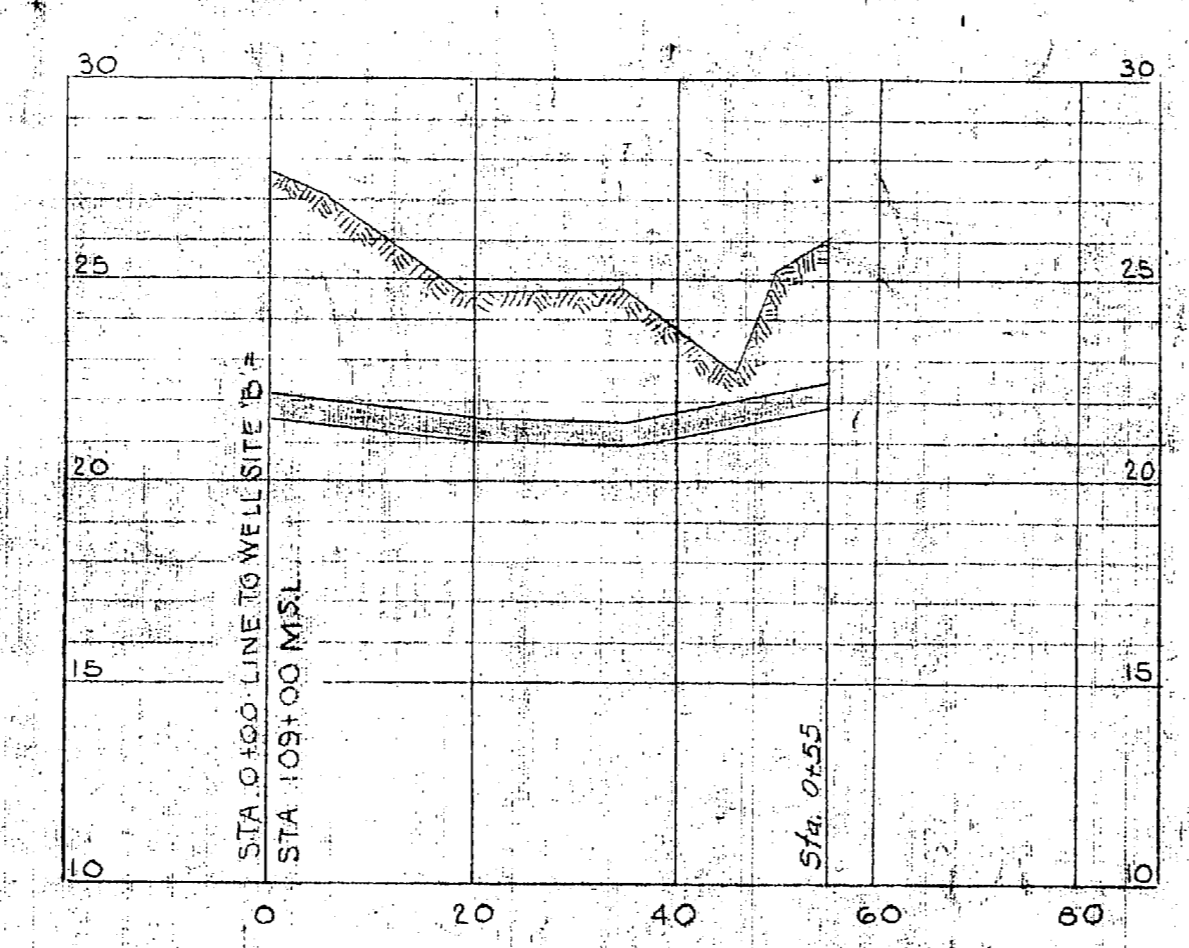
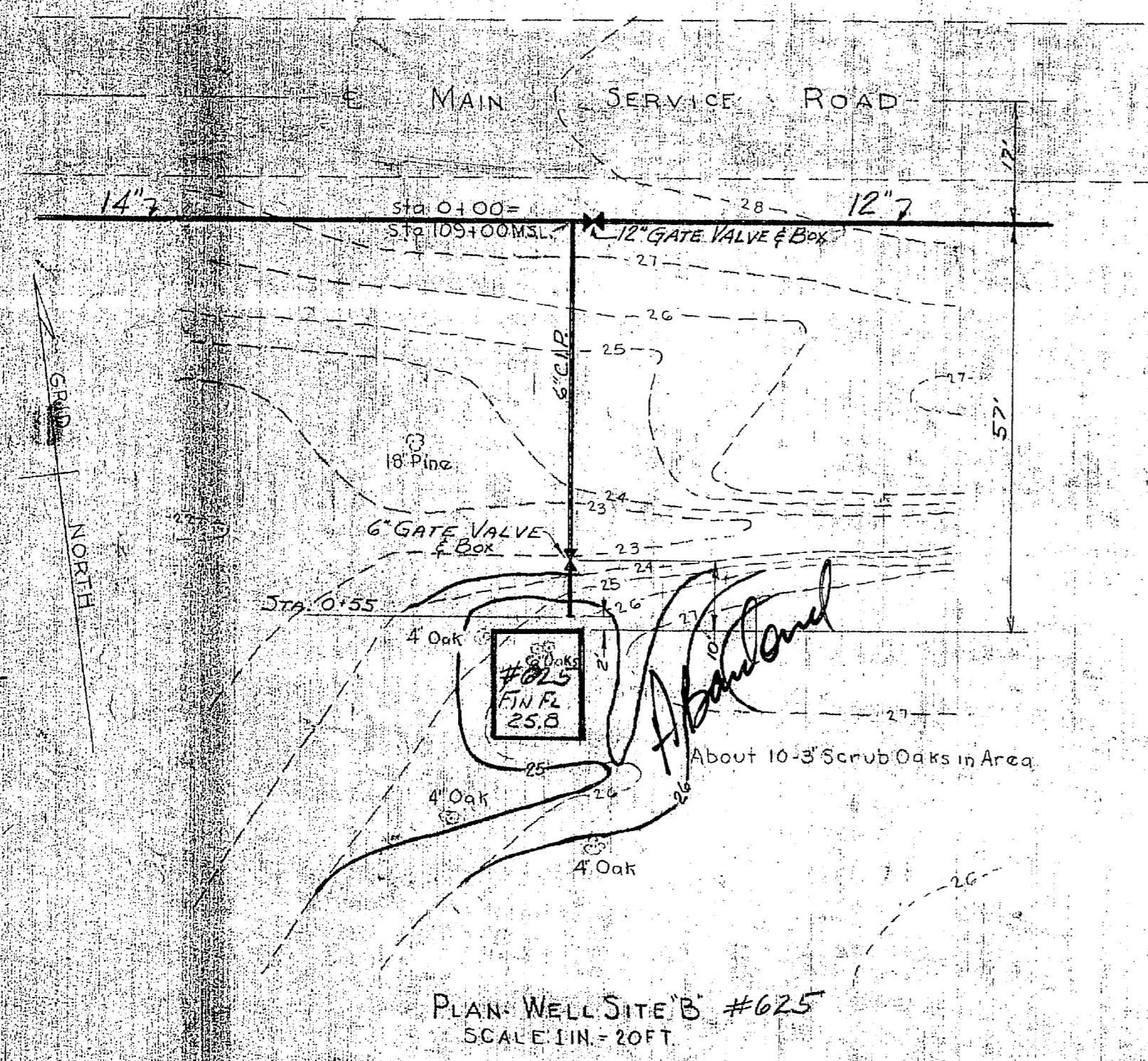
LEGEND
EXISTING CONTOUR LINES
PROPOSED CONTOUR LINES
PROPOSED RAW WATER SUPPLY MAIN
PROPOSED 1/2" RELEASE VALVES
PROPOSED 15" GATE VALVES

NO. 21	DATE 5/25/51	BY APPD.	CONSTRUCTION DETAILS ALTERED	NO. 2
REVISION	DATE	APPD.	DESCRIPTION	BY
P.W. DRAWING NO. 7865		MARINE BARRACKS CAMP LEJEUNE, N. C.		
DES. BY [Signature]		CORRECTION OF DEFICIENCIES IN RAW WATER SUPPLY SYSTEM PLAN, PROFILE AND ELECTRICAL DISTRIBUTION		
DRWN. BY [Signature]		APPROVED [Signature] DATE 5/14/51		
CHK. BY [Signature]		PUBLIC WORKS OFFICER		
SUPERV. BY [Signature]		SCALE 1/4" = 1'-0" SREC 27079		
IN CHARGE [Signature]		SHEET 8 OF 20 NO. 24977		
APPROVED [Signature]		DATE		
DATE		THE QUARTERMASTER GENERAL OF THE MARINE CORPS		
		Y&D DRAWING NO. 486865		





PROFILE
SCALE: HOR. 1"=100 FT. VERT. 1"=10 FT.



LEGEND
EXISTING CONTOUR LINES
PROPOSED CONTOUR LINES
PROPOSED RAW WATER SUPPLY MAIN
PROPOSED AIR RELEASE VALVE
PROPOSED GATE VALVES

REVISION	DATE	APPD.	DESCRIPTION	BY
			MARINE BARRACKS CAMP LEJUNE, N. C.	
			CORRECTION OF DEFICIENCIES IN RAW WATER SYSTEM	
			RAW WATER SUPPLY SYSTEM PLAN, PROFILE AND ELECTRICAL DISTRIBUTION	
DESIGNED BY			APPROVED	DATE
DRWN BY			<i>[Signature]</i>	3/78
TR. BY			PUBLIC WORKS OFFICER	
CHK. BY			SCALE	SPEC
SUPV. BY			1/4" = 1' - 0"	270.79
			SHEET 6 OF 20	NOV 249.77
			THE QUARTERMASTER GENERAL OF THE MARINE CORPS	Y & P DRAWING NO. 486863

