



UNITED STATES MARINE CORPS  
MARINE CORPS BASE  
CAMP LEJEUNE, NORTH CAROLINA 28542-5001

*file copy*

IN REPLY REFER TO:

11000  
TRNG/OPS  
18 Mar 1987

From: Commanding General, Marine Corps Base, Camp Lejeune  
To: Commanding General, Second Force Service Support Group  
(Rein), FMF, Camp Lejeune, NC 28542-5701

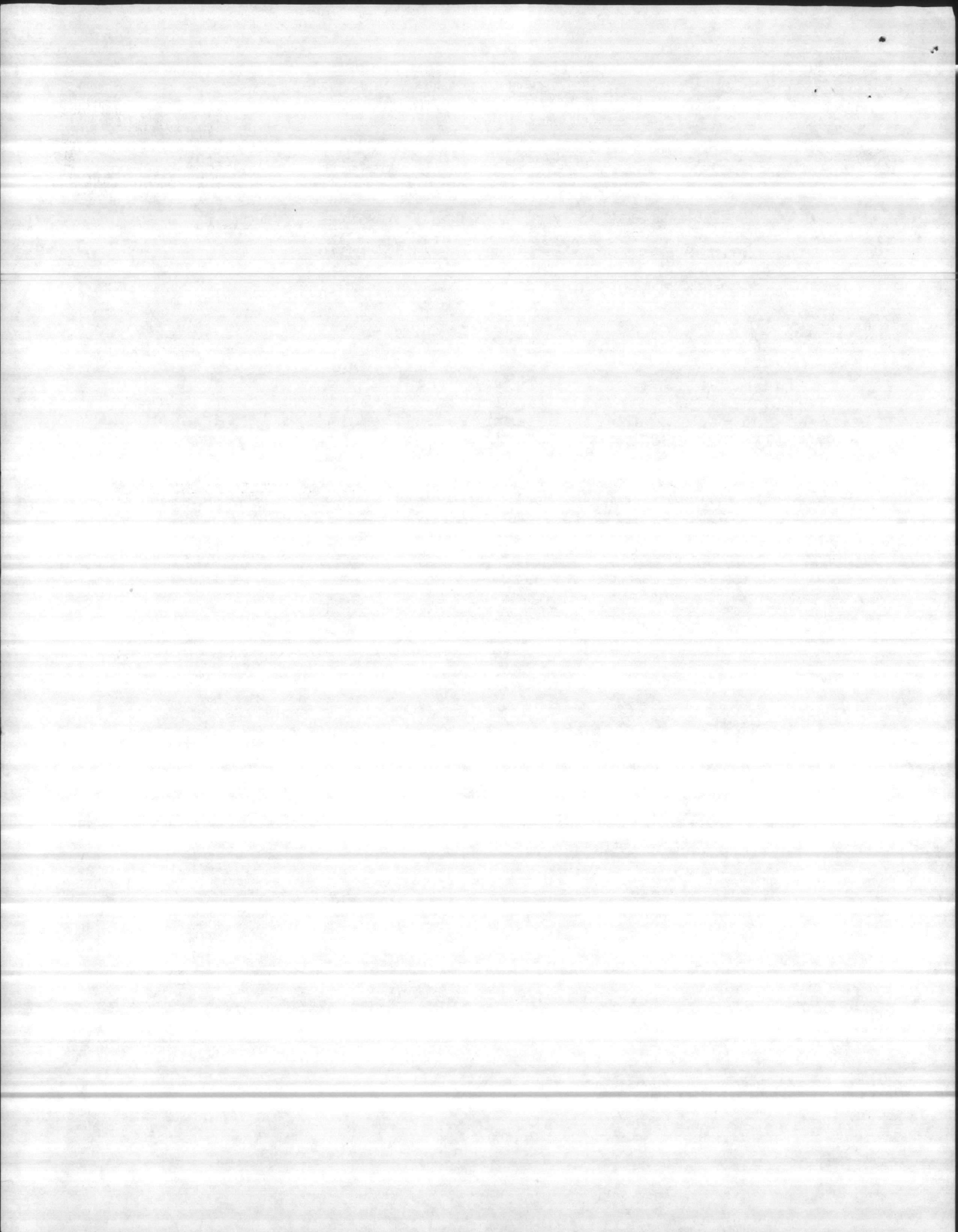
Subj: REQUEST FOR DESIGNATION OF A NEW ADMINISTRATIVE LANDING ZONE

Ref: (a) CG 2d FSSG ltr 1500 G-3T dtd 12 Dec 86  
(b) BO P11102.1

1. The requests contained in reference (a) to designate an additional administrative landing zone (ALZ) in the French Creek area, and retain ALZ 21 are approved. The ALZ's will be under the control of 2d FSSG.
2. The Marine Corps Base Range Control Officer will ensure all units training within the Camp Lejeune area are aware ALZ 26, French Creek, GC 858368 (Soifert Memorial Field) is operational. Additionally, reference (b) will be changed to reflect this new ALZ.

J. A. SPEICHER  
By direction

Copy to:  
TFAC





UNITED STATES MARINE CORPS  
2d FORCE SERVICE SUPPORT GROUP (REIN)  
FLEET MARINE FORCE, ATLANTIC  
CAMP LEJEUNE, NORTH CAROLINA 28542-5701

15 DEC 1986  
IN REPLY REFER TO:  
1500  
G-3T  
12 December 1986

From: Commanding General, 2d Force Service Support Group (Rein)  
To: Commanding General, Marine Corps Base, Camp Lejeune, North Carolina  
28542-5001 (Attn: AC/S, Training and Operations)

Sunj: REQUEST FOR DESIGNATION OF A NEW ADMINISTRATIVE LANDING ZONE

1. It is requested that a new Administrative Landing Zone be designated in the French Creek Area, GC 858368 on the Camp Lejeune Special Map (Soifert Memorial Field).

2. The new LZ should be under the control of Headquarters, 2d FSSG.

3. Justification:

a. Present French Creek LZ (ALZ-21) is not in close proximity to the areas normally visited by military and civilian officials.

b. ALZ-21 is not useable during inclement weather due to pooling of surface water and the poor condition of the access road.

c. The proposed LZ is not surrounded by obstacles and will provide an increased safety factor for arriving and departing aircraft.

d. Proposed relocation of FSSG Headquarters building will require this area to be designated as an ALZ.

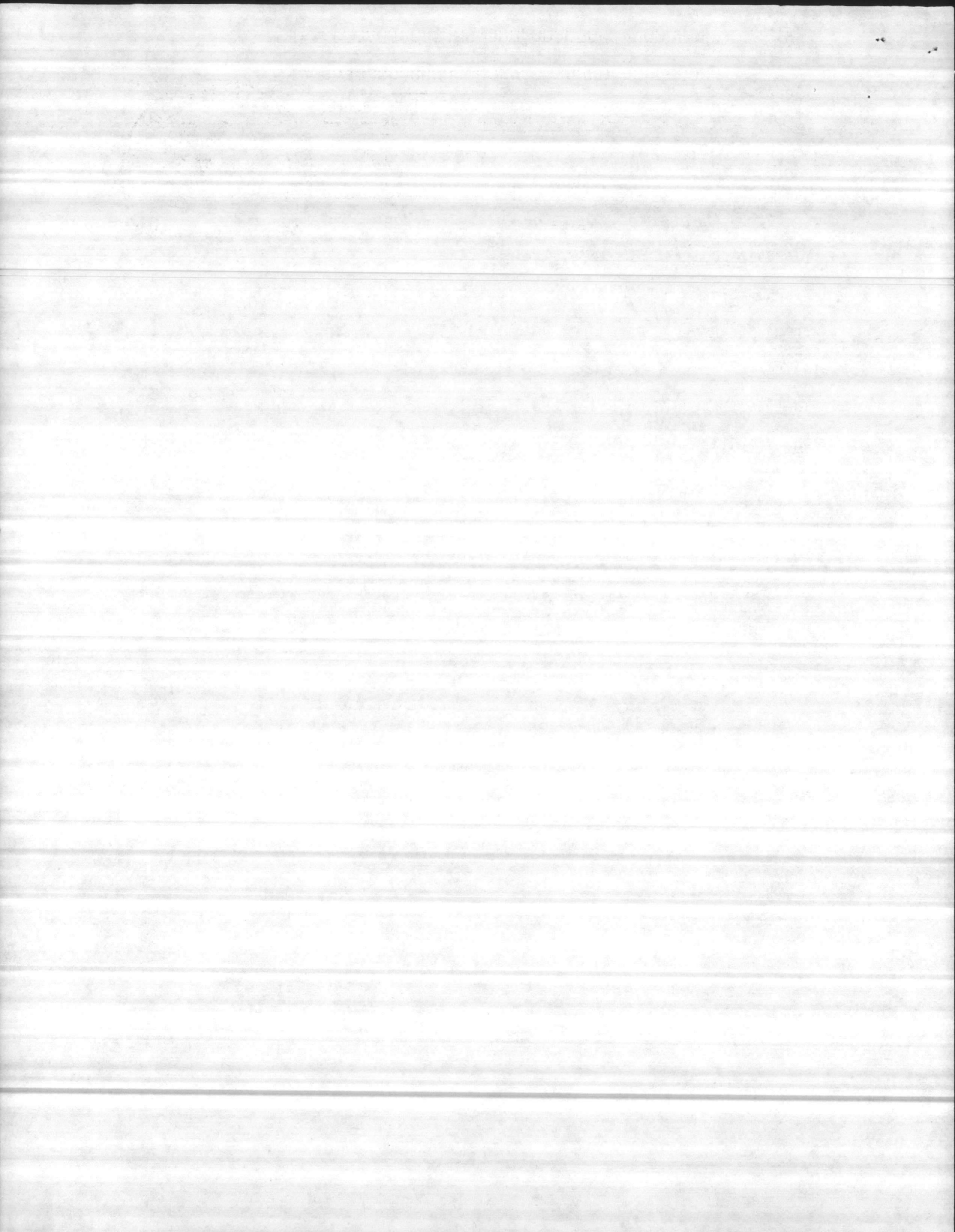
e. Designation of a new LZ at this time will allow it to be included on the revised Camp Lejeune Special Map.

4. It is also requested that the current ALZ-21 be retained for administrative troop lifts.

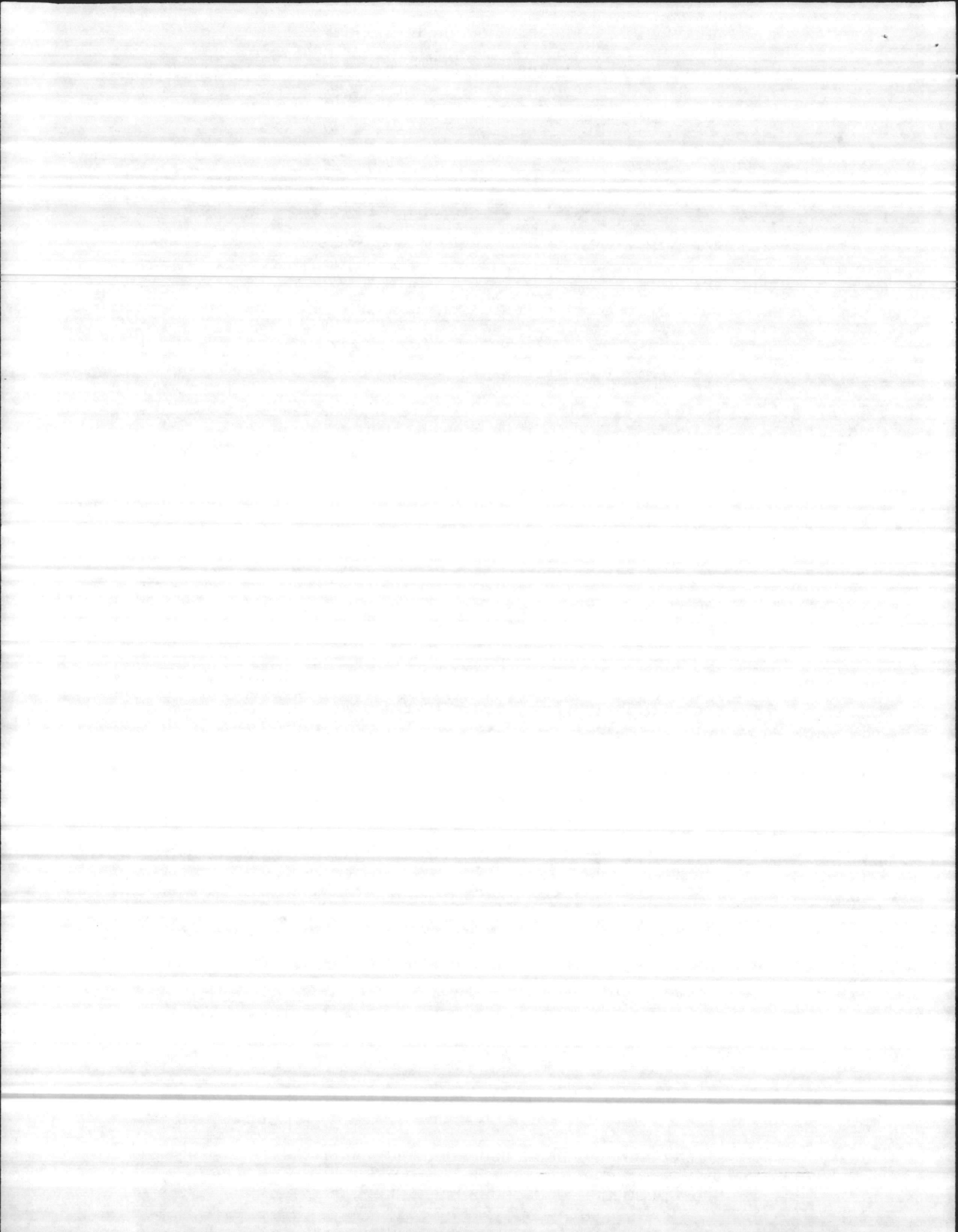
5. Point of Contact at this Headquarters (AC/S, G-3T) is LtCol W. W. SHALLCROSS or SSgt R. A. CRIBB at extensions 2217/1711.

W. W. SHALLCROSS  
By direction









MAR 17 1987

PRIORITY

P 171407Z MAR 87

FM MAG TWO NINE//S-3//

TO CG SECOND MAW//G-3WFB-2//

INFO CG MCB CAMP LEJEUNE NC//TFAC// MAG TWO SIX//S-3//

UNCLAS //N11102//

SUBJ: SITE ASSESSMENT FOR PROPOSED ALZ

A. CG SECOND MAW 051516Z MAR 87

1. REF A DIRECTED AN ASSESSMENT MADE OF SOIFERT MEMORIAL FIELD TO DETERMINE SUITABILITY OF SITE FOR USE AS AN ADMIN LZ.
2. ASSESSMENT WAS CONDUCTED AND SITE WAS FOUND TO BE ACCEPTABLE TO LAND MULTIPLE ACFT WITHOUT DANGER TO AIRCREW OR GROUND PERSONNEL.
3. ZONE DESCRIPTION: 200X300 YDS IN SIZE, LEVEL, 80-100 FT TREES ON SOUTH AND WEST SIDES, STANDARD POWERLINES ON NORTH AND EAST SIDES, GRAND STANDS WITH FLAG POLES ON EAST SIDE. ACFT SHOULD AVOID FLYING OVER BARRACKS FOUND TO THE EAST.
4. MAG-29 POC: CAPT MILLER, EXT. 6367/6898.

BT

RECIPIENTS	
DATE	
TIME	
EXTENSION	
TYPE	
DTG	
TRAC	
FILE	
EOC	
SEC	
FILE	

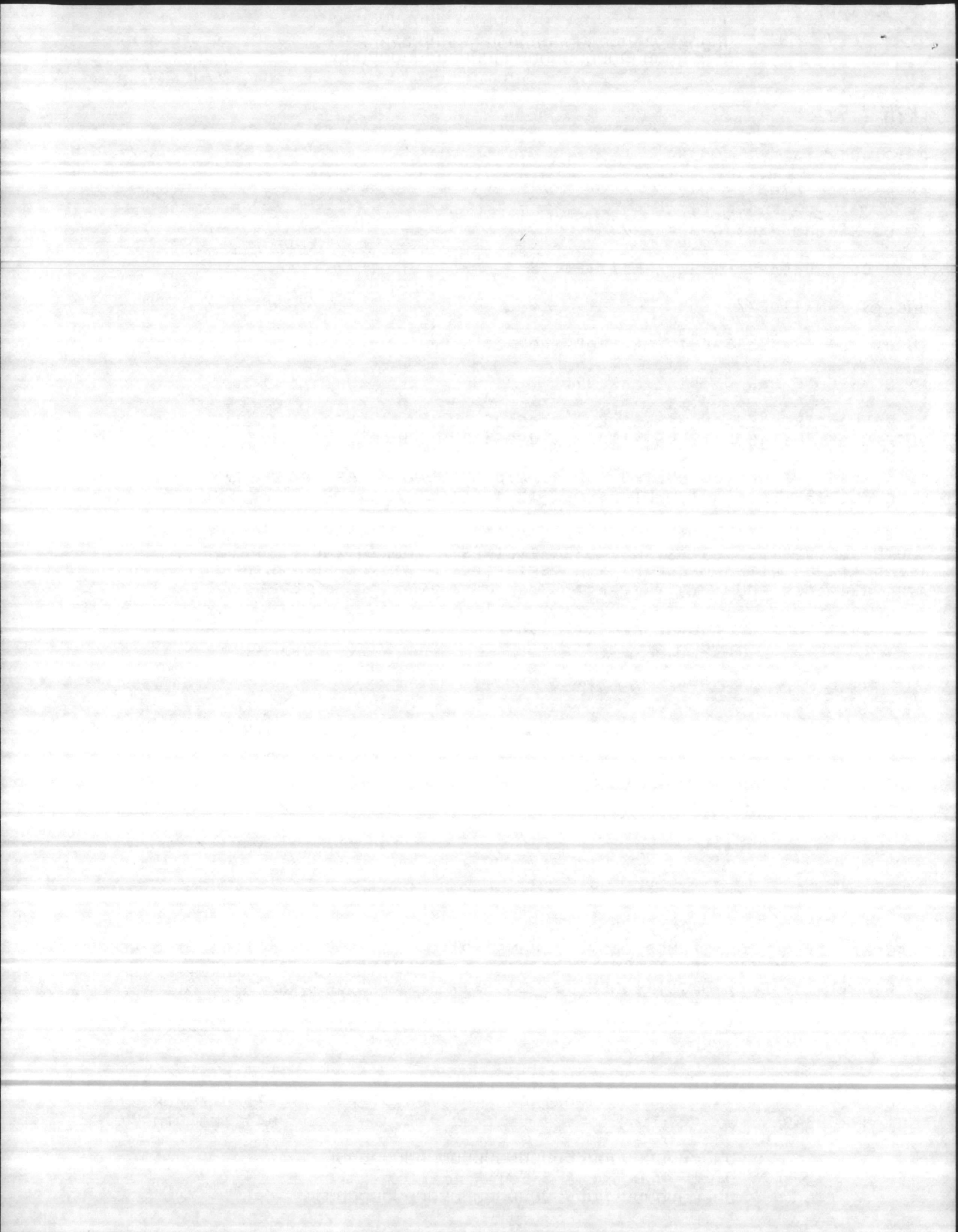
BFAC(2)...INFO FOR CG MCB CAMP LEJEUNE(20) 11102/ 1/0340  
 BADI(4) BCOS(1) BFOR(1) BPWO(1) BSDO(1) BSSD(1) CEQA(1) FIRE(1)  
 GVAR(1) JPAD(1) MAIN(1) NREA(1) OTCR(1) TFAC(1) TRNG(1)

RTD:000-000/COPIES:0020

829515/077  
CSN:RNR00049

1 LF 1 MATA0262 077/06:37Z

171407Z MAR 87  
MAG TWO NINE//





PRIORITY

P 051516Z MAR 87

FM CG SECOND MAW//G3WER-2//

TO MAG TWO NINE//S3//

INFO CG SECOND FSSG//G3//  
MAG TWO SIX//S3//

CG MCR CAMP LEJEUNE NC//G3//

UNCLAS //N11102//

SUBJ: SITE ASSESSMENT FOR PROPOSED LZ

A. CG MCR CAMP LEJEUNE NC 251444Z FEB 87

- 1. REF REQ SITE ASSESSMENT OF PROPOSED LZ AT CLNC.
- 2. MAG-29 COORD WITH MAG-26 TO PERFORM SITE ASSESSMENT TO DETERMINE SUITABILITY OF PROPOSED SITE FOR USE AS LZ FOR ALL 2D NAW HELOS.
- 3. PROVIDE ASSESSMENT TO THIS HQ, G-3 HLT COB, 16 MAR 87 INFO CG MCR CLNC//TFAC//.
- 4. POC: MAJ J. A. HARLER, 2D MAW G-3 WFB, AV 582-3033/3239.

BT



TFAC(2)...INFO FOR CG MCR CAMP LEJEUNE(3)  
TPNG(1) BCOS(1) CEVA(1) BEND(1) DTCP(1) BSDO(1)

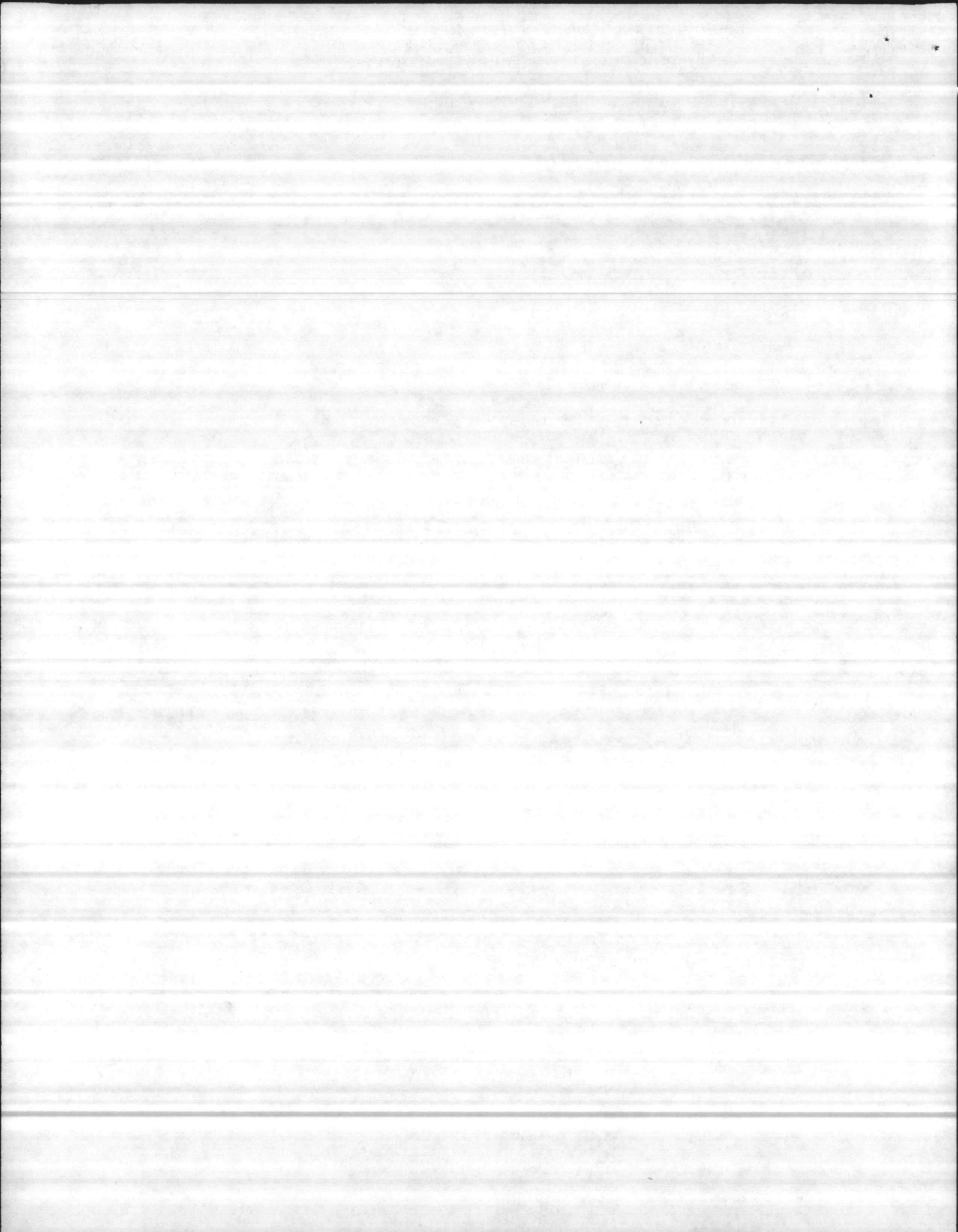
/04/

RTP:000-000/COPIES:0008

791742/065  
CSN:RCHRO0056

1 OF 1 KATA0197 065/02:53Z

051516Z MAR 87  
CG SECOND MAW/



FEB 26 1987

ROUTINE

R 251444Z FEB 87

FM CG MCB CAMP LEJEUNE NC//TFAC//

TO CG SECOND MAW

INFO MCAS NEW RIVER NC  
MAG TWO NINE

MAG TWO SIX

UNCLAS //N11102//

SUBJ: SITE ASSESSMENT FOR PROPOSED ALZ



1. CG SECOND FSSG REQ NEW LZ BE DESIGNATED ALZ 26 AT THE FRENCH CREEK AREA (SOIFFERT MEMORIAL FIELD) CG 858368.

2. REQ SITE ASSESSMENT BE CONDUCTED AND FINDINGS REPT TO THIS ACTION/INFO

BT

Range Control	
Range Main.	
Naval Log	
Service and Support	
Co-S. Control	
ECB	
VCS	
ES	
SES	
Amplifier	
TI	

TFAC(2)...ORIG FOR CG MCB CAMP LEJEUNE(3)  
TRNG(1) BCOS(1) CFOA(1) BEOD(1) DICR(1) BSOD(1)

/13/

RTD:000-000/COPIES:0008

763595/056  
CSNIRXIC00008

1 OF 1 MATA0455 056/18:25Z

251444Z FEB 87  
CG MCB CAMP LE

