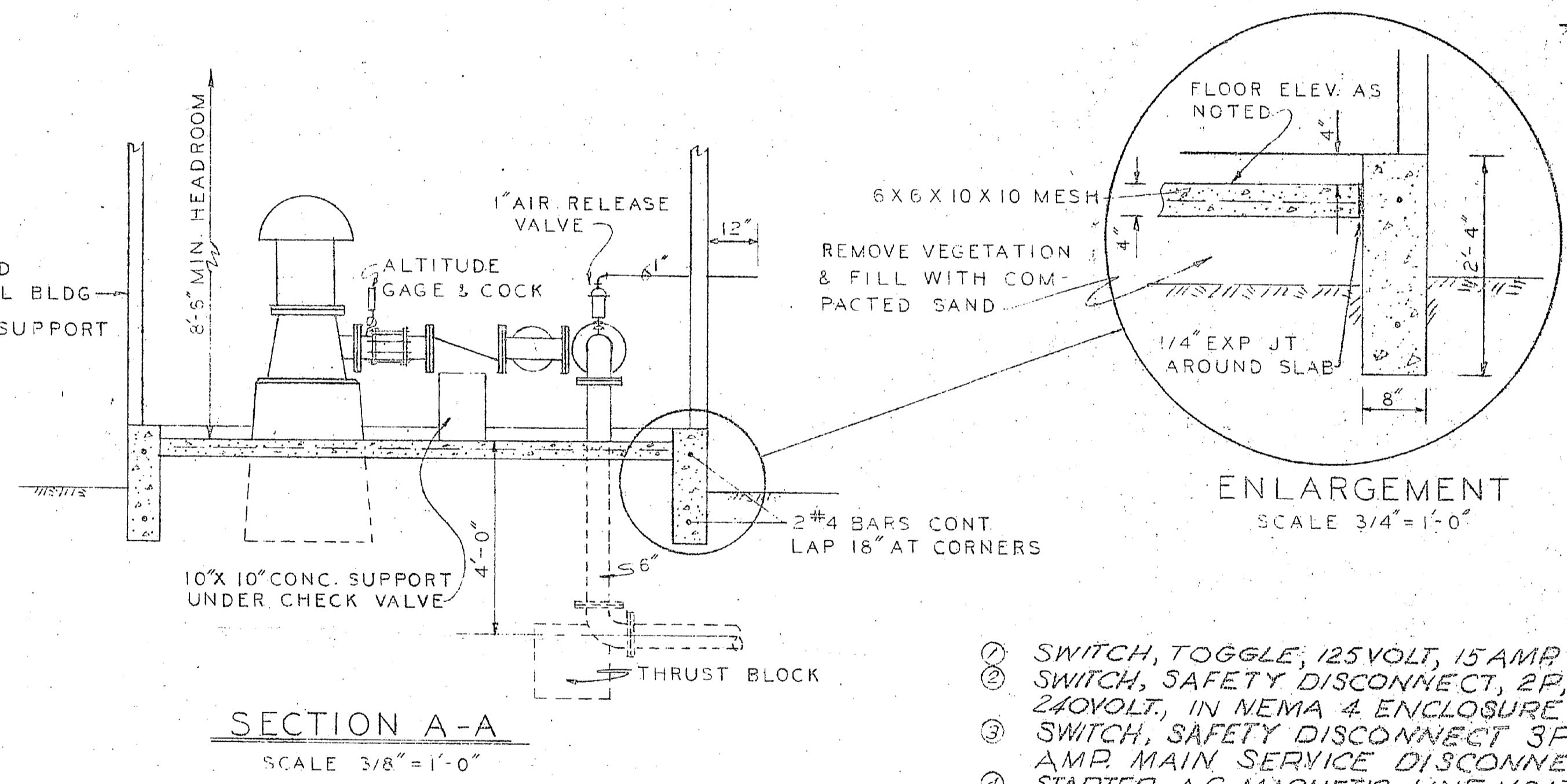
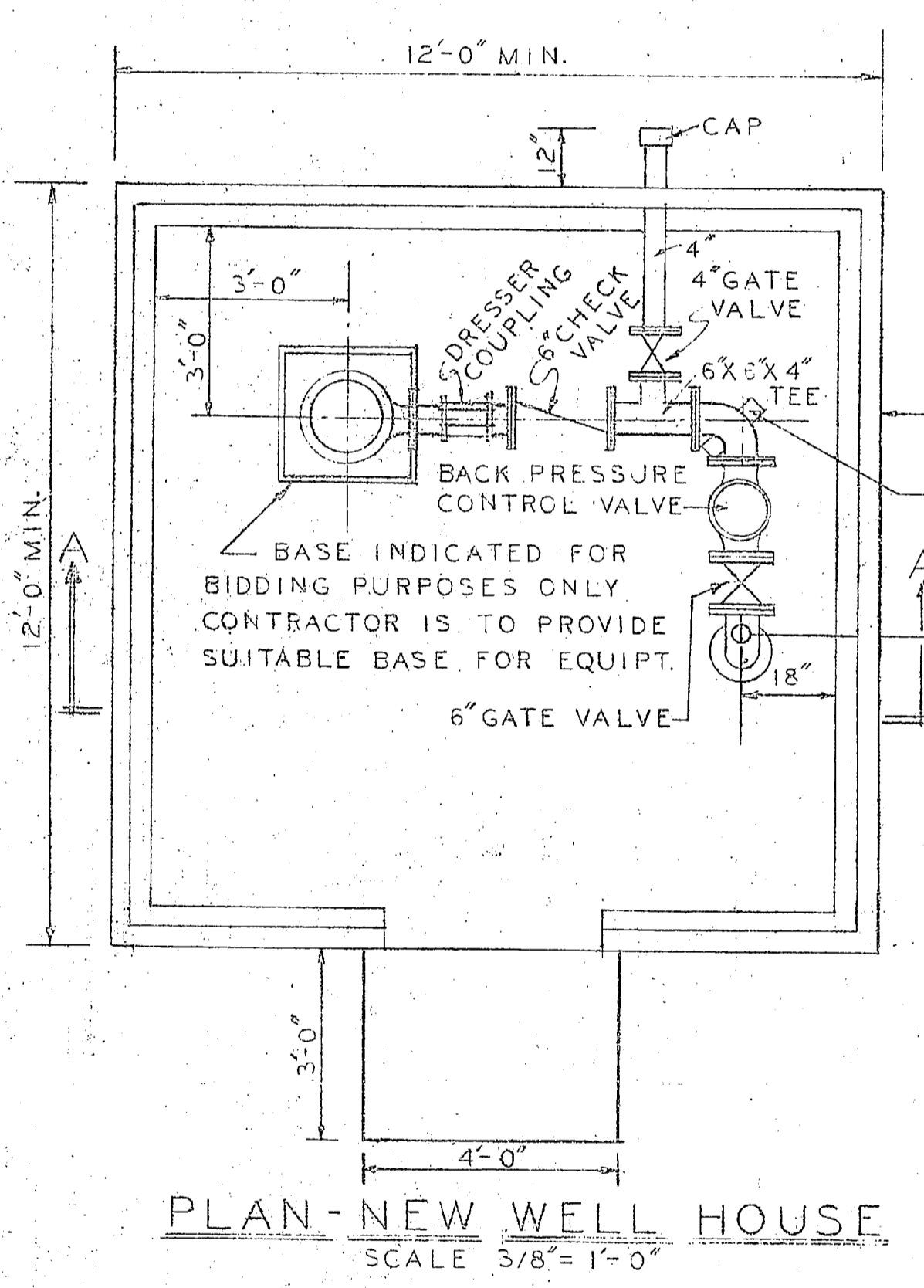
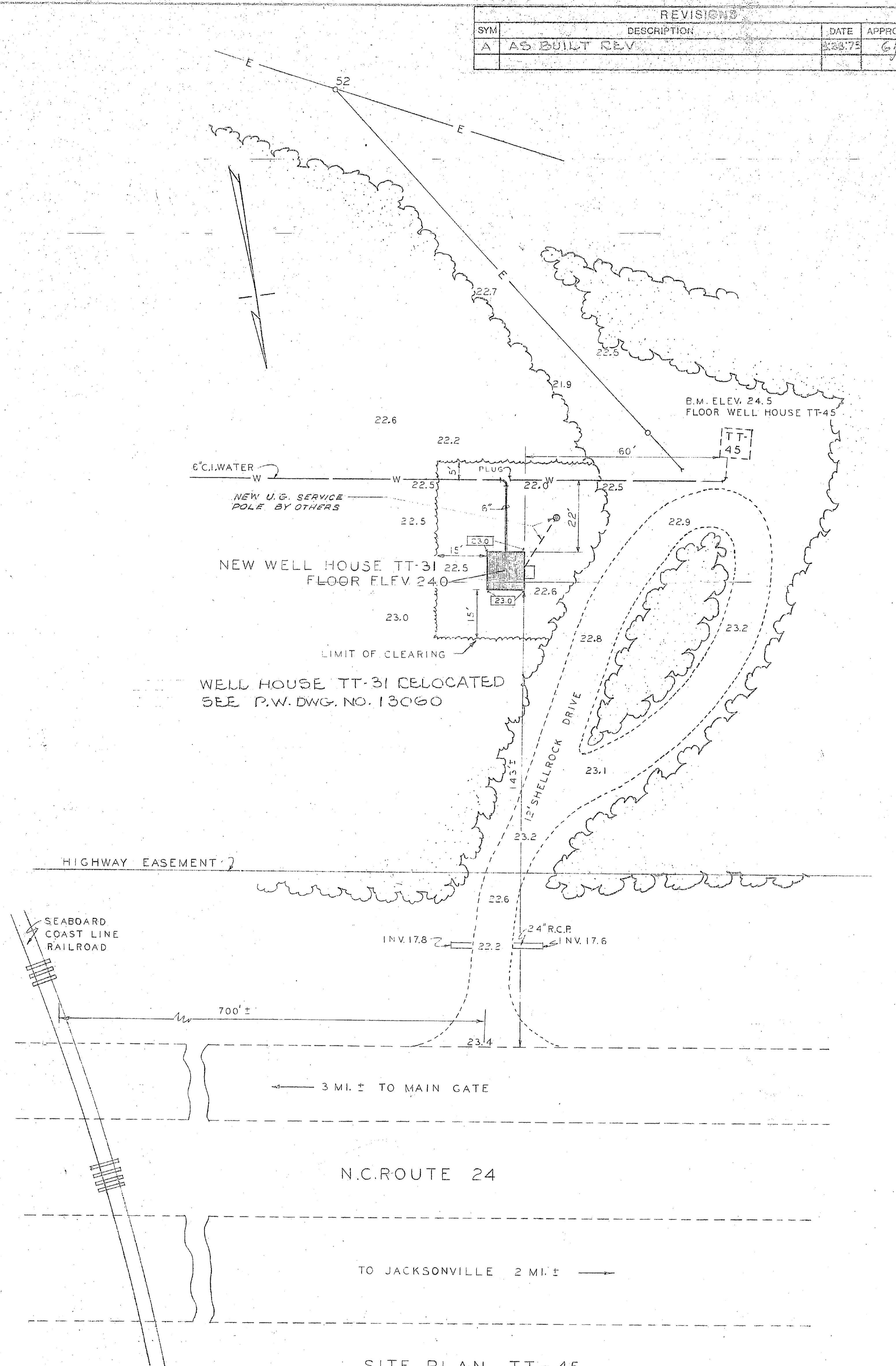
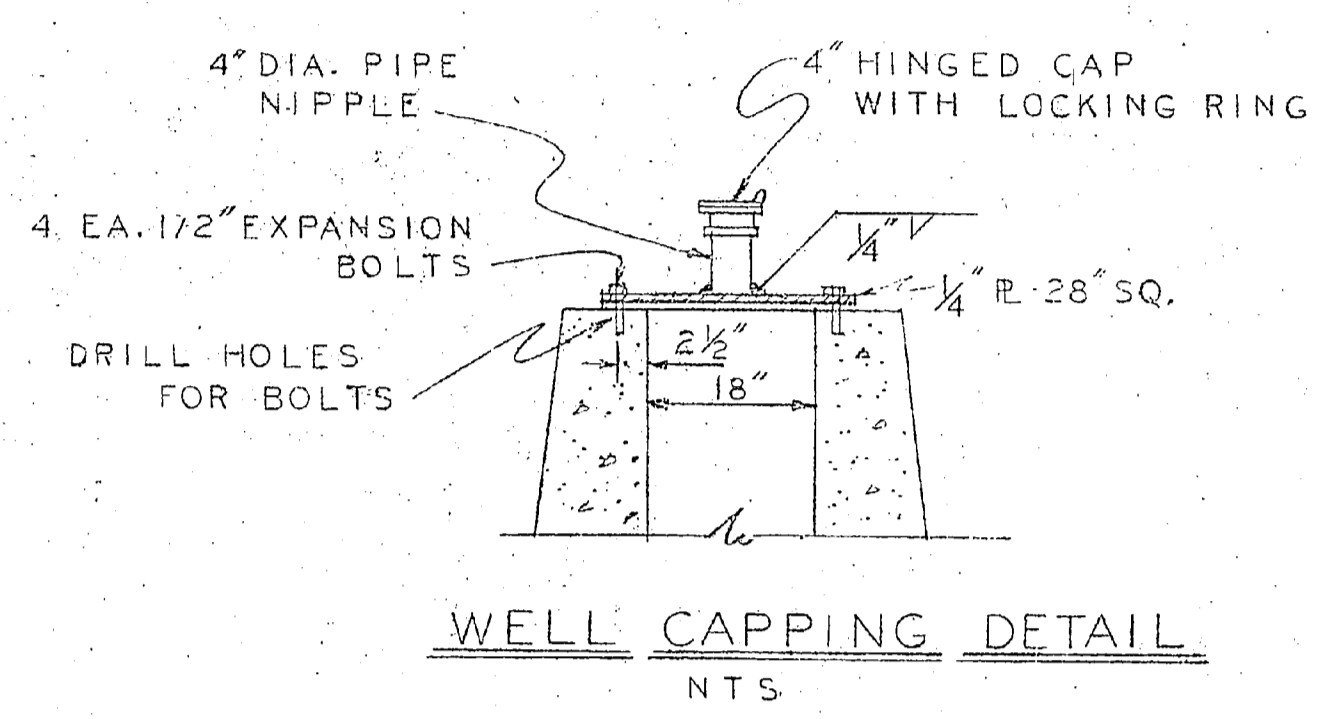
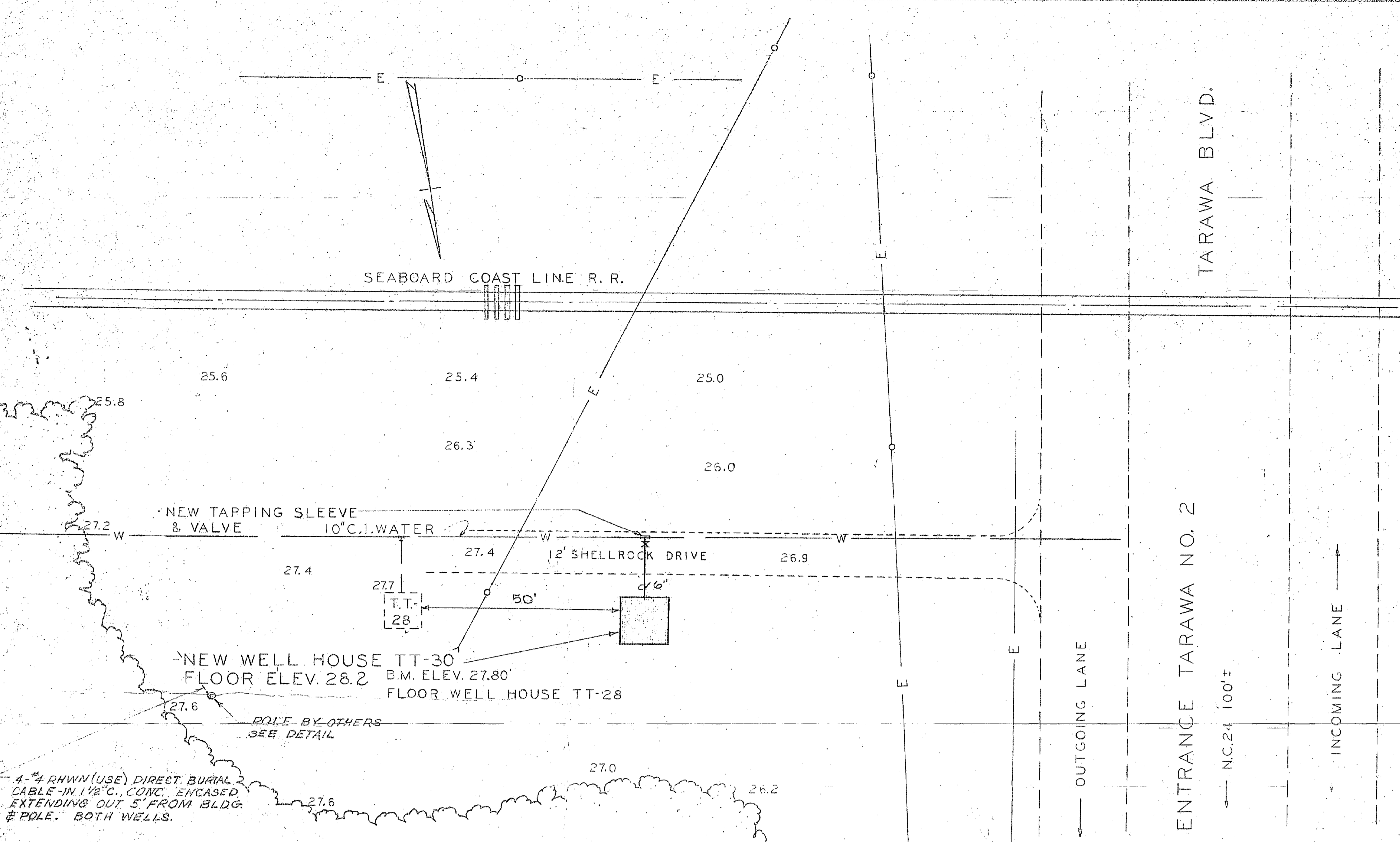
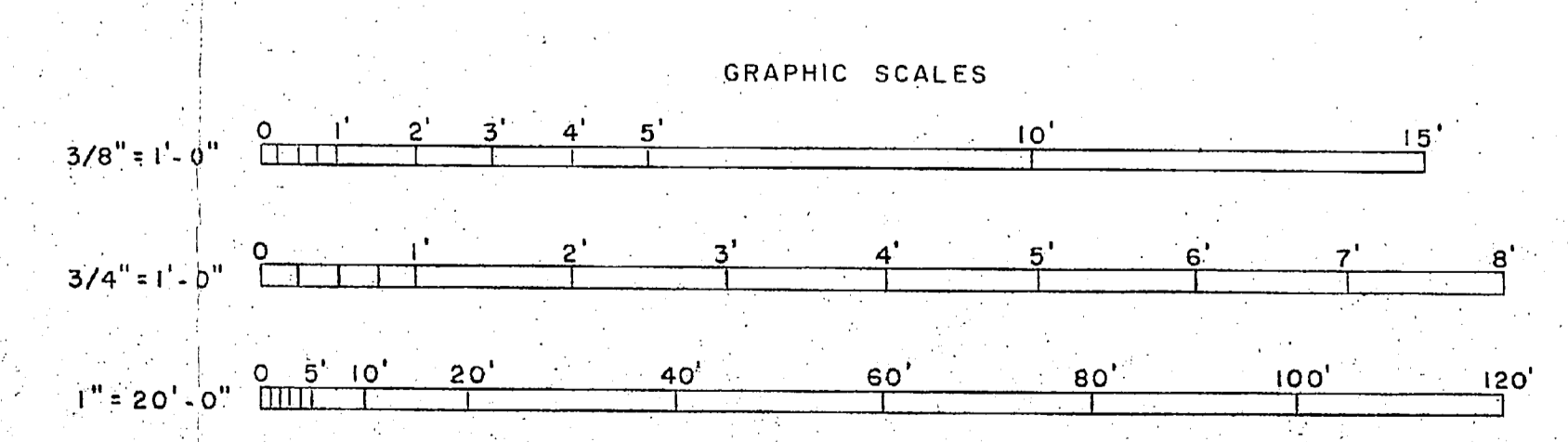
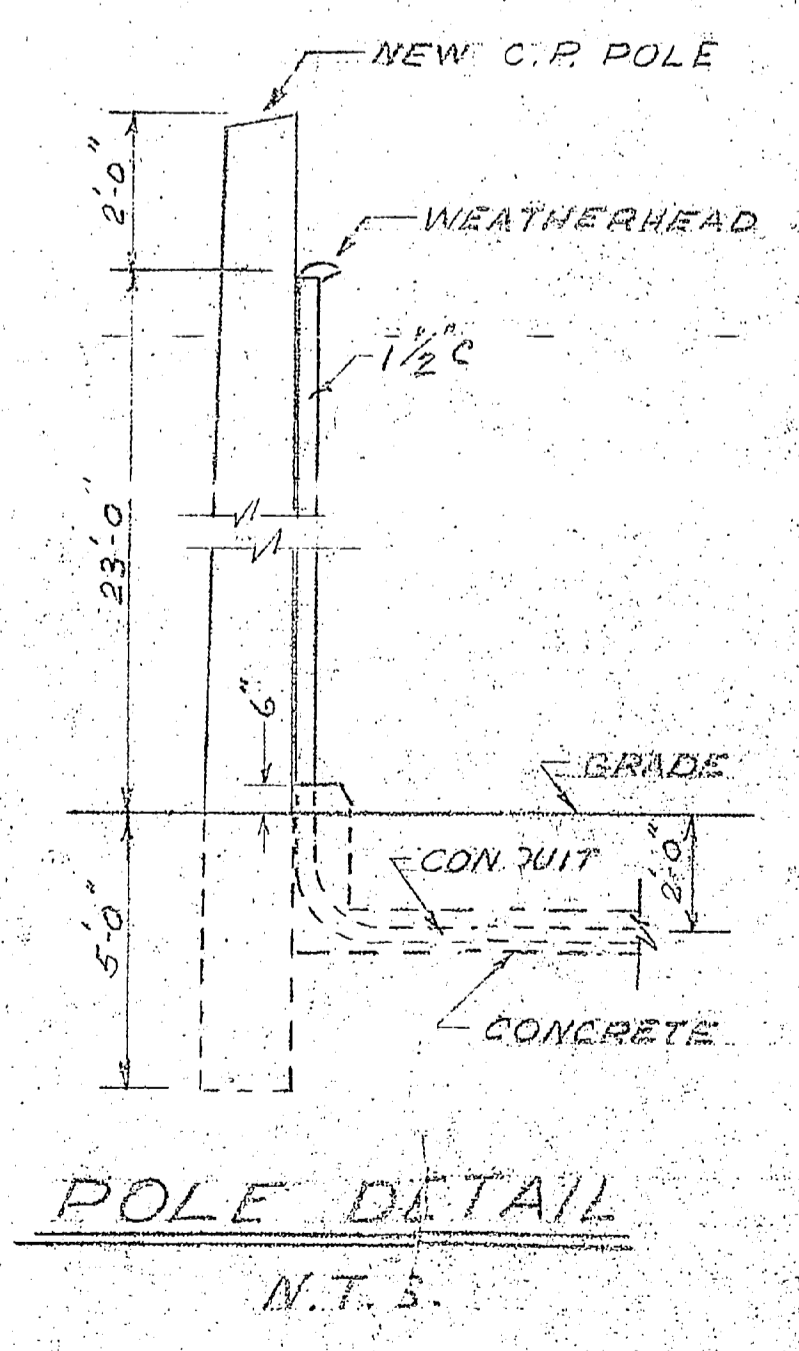
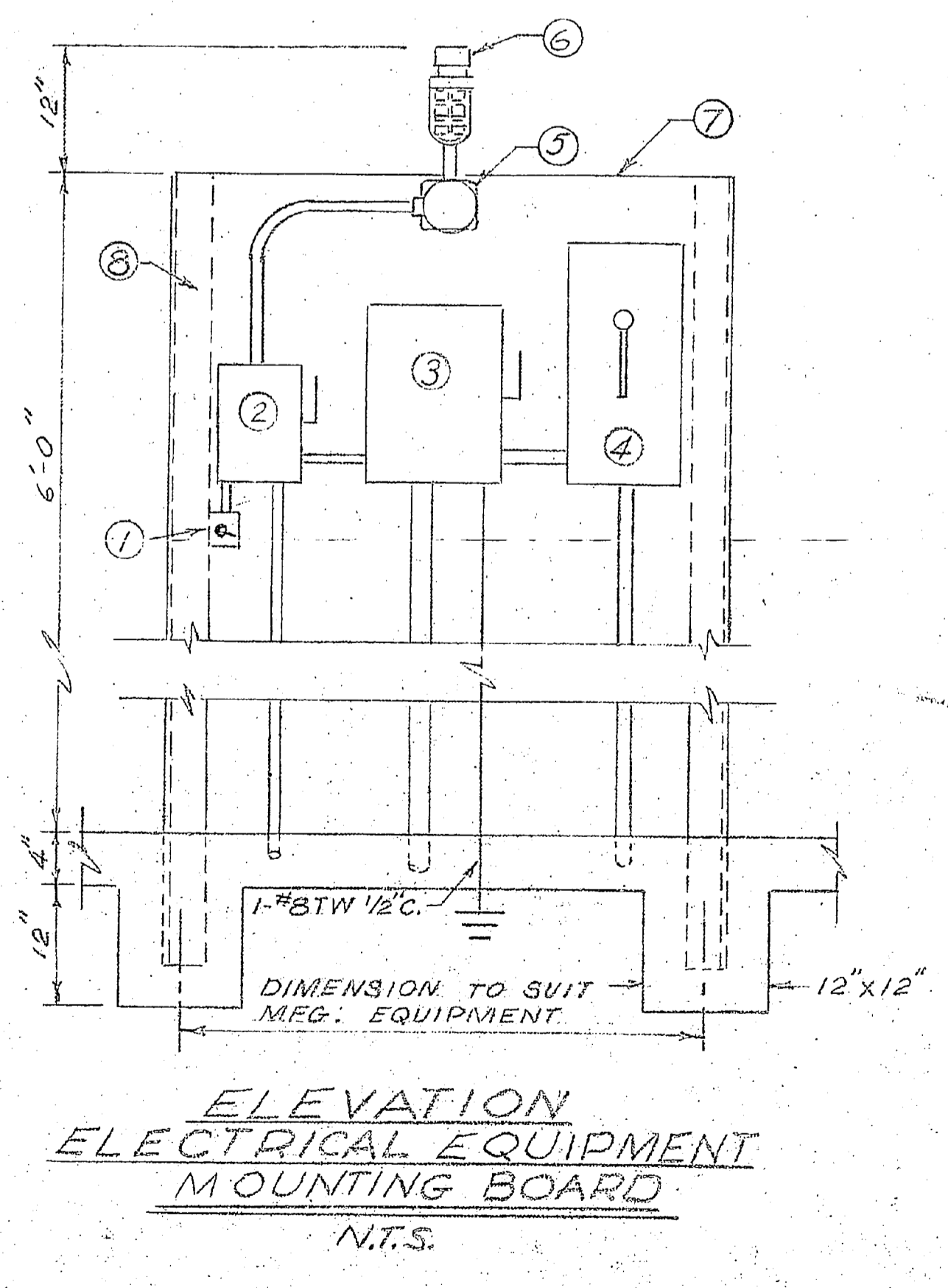
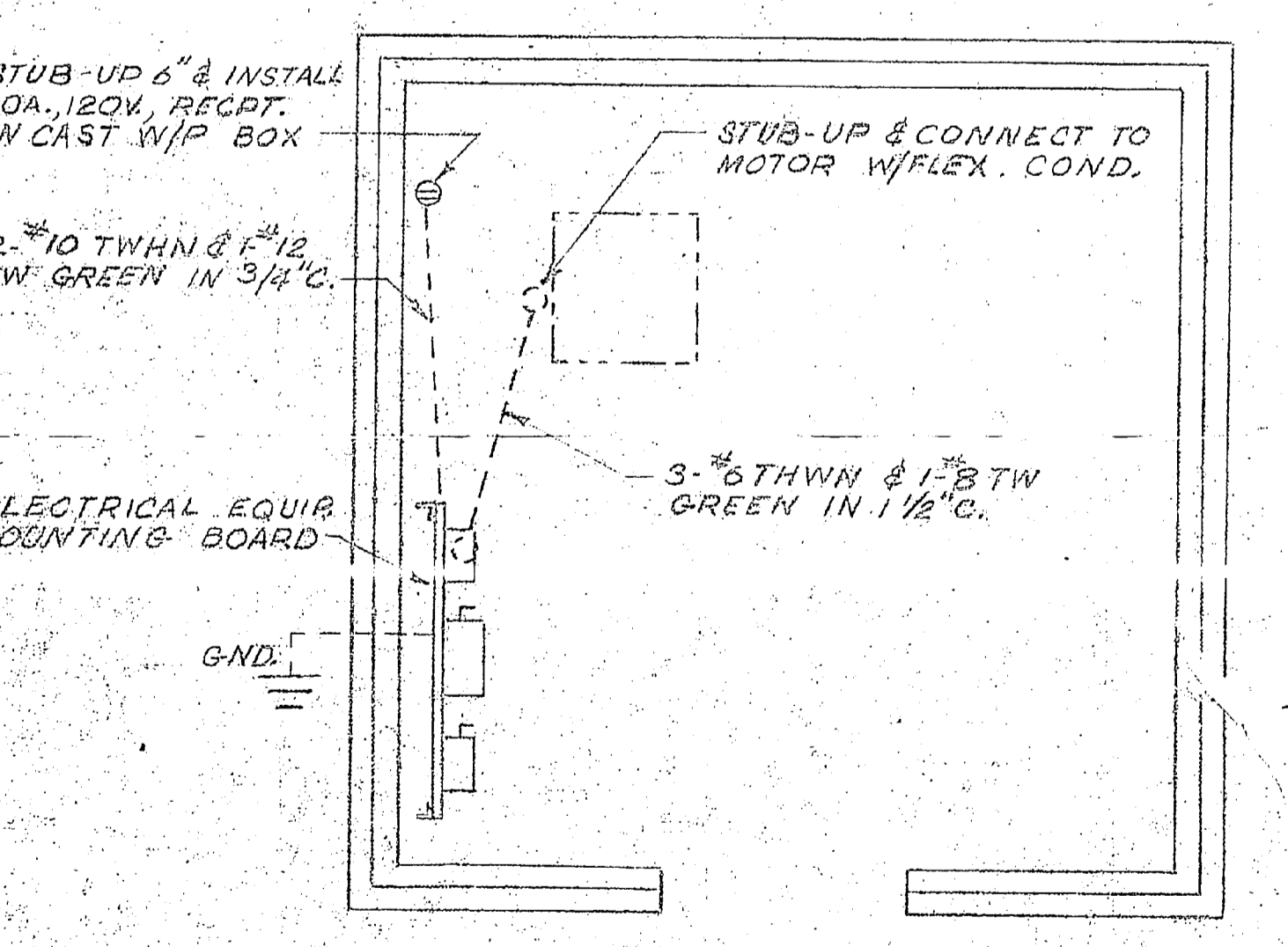


REVISIONS			
SYM	DESCRIPTION	DATE	APPROVED
A	AS BUILT REV	2-23-75	[Signature]

- LEGEND**
- EXIST. BLDGS. [Symbol]
  - ROADS [Symbol]
  - POWER LINES [Symbol]
  - RAILROAD [Symbol]
  - WOODS LINE [Symbol]
  - RAW WATER LINE [Symbol]
  - SPOT ELEVATIONS 22.5 [Symbol]
  - NEW BLDG. [Symbol]
  - WATER LINE [Symbol]
  - FIN. GRADES [Symbol]
  - CLEARING LINE [Symbol]



- ENLARGEMENT**  
SCALE 3/4" = 1'-0"
- SWITCH, TOGGLE, 125VOLT, 15 AMP IN CAST WEATHER PROOF BOX.
  - SWITCH, SAFETY DISCONNECT, 2P, 3IN (2 FUSES & NEUTRAL) 30 AMP, 240VOLT, IN NEMA 4 ENCLOSURE FOR LIGHT & RECEPTACLES.
  - SWITCH, SAFETY DISCONNECT 3P, 3IN (3 FUSES & NEUTRAL) 200 AMP MAIN SERVICE DISCONNECT IN NEMA 4 ENCLOSURE.
  - STARTER, A.C. MAGNETIC LINE VOLTAGE START, 3 PHASE, 240 VOLT, NEMA 2 SIZE, IN NEMA 4 ENCLOSURE W/INT. DISC. SWITCH.
  - JUNCTION BOX, CAST WEATHER PROOF.
  - LIGHT FIXTURE, VAPORTIGHT, 100WATT W/ GUARD.
  - PLYWOOD MOUNTING BOARD 3/4" SIZE AS REQUIRED TO SUIT EQUIPMENT - W/ 5/16" BOLTS.
  - ANGLE IRON SUPPORT 4" X 4" X 3/8" L.
- NOTE: ALL WIRE SIZE IS BASED ON COPPER.



PUBLIC WORKS DEPT. MARINE CORPS BASE CAMP LEJEUNE, N.C.		DEPARTMENT OF THE NAVY MARINE FACILITIES ENGINEERING COMMAND ATLANTIC DIVISION	
DESIGNER: [Signature]		PROJECT: MARINE CORPS BASE CAMP LEJEUNE, N.C.	
APPROVED: [Signature]		DATE: 1/19/75	
PUBLIC WORKS OFFICER		SATSFACTORY TO: DATE:	
COMMANDING GENERAL		SIZE: CODE: 80091	
EFG: [Signature]		MARINE FACILITIES NO: 1244002	
DIRECTOR: [Signature]		CONTRACT NO: NS2479-71-B-0307	
SCALE NOTED: 1" = 20'-0"		DATE: 4-12-75	

