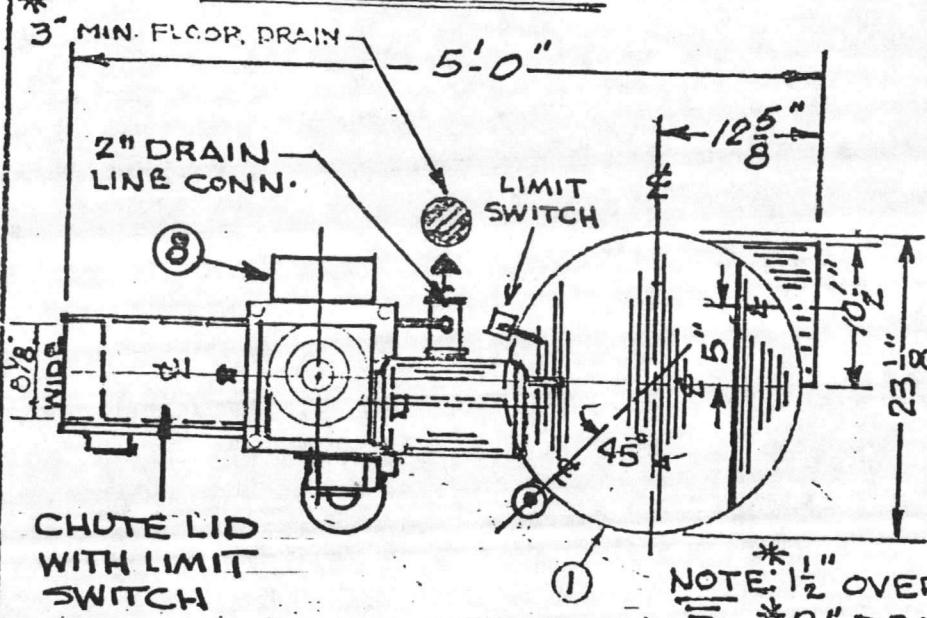


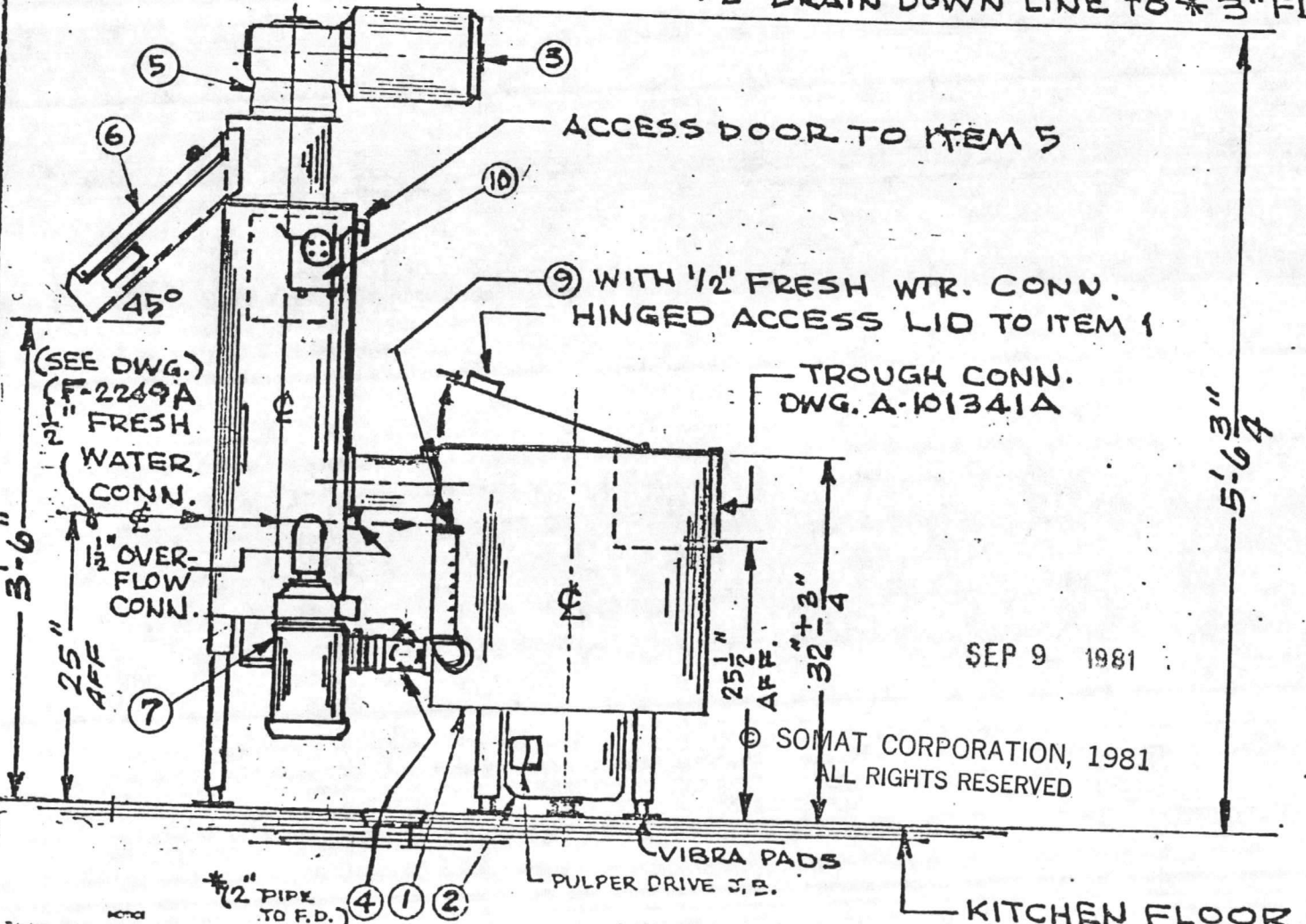
# PLAN VIEW



2	1	MOTOR, MAIN DRIVE - 5 HP
3	1	MOTOR, HYDRA-EXTRACTOR, 1/2 HP
4	1	DRAIN VALVE 2" DIA.
5	1	HYDRA-EXTRACTOR - 6 CC
6	1	DISCHARGE CHUTE 5" S
7	1	RETURN PUMP - 2 HP
8	1	JUNCTION BOX
9	1	WATER LEVEL CAPILLARY TUBE
10	1	CHEMICAL ADDITIVE PUMP

- NOTES:
1. SHIPPING WEIGHT (APPROX) 600 LBS.
  2. OPERATING WEIGHT (APPROX) 975 LBS.
  3. PIPING AND WIRING TO AND BETWEEN SOMAT MACHINES BY OTHERS.
  4. LOCATIONS OF PIPING CONNECTIONS ARE APPROX. WITH PLUMBING ROUGH TO BE AT LEAST (2'-0") FROM RELATED CONNECTIONS.
  5. SEE ACCESSORY SHEETS FOR RELATED JOB EQUIPMENT BEING FURNISHED.
  6. LOCATE SOMA-TROL PANEL WITHIN 10 FEET OF PULPER.

NOTE: 1/2" OVER-FLOW LINE TO \* 3" FD.  
 \* 2" DRAIN DOWN LINE TO \* 3" FD.



SEP 9 1981

© SOMAT CORPORATION, 1981  
 ALL RIGHTS RESERVED

# ELEVATION

\* NOT FURNISHED BY THE SOMAT CORP.

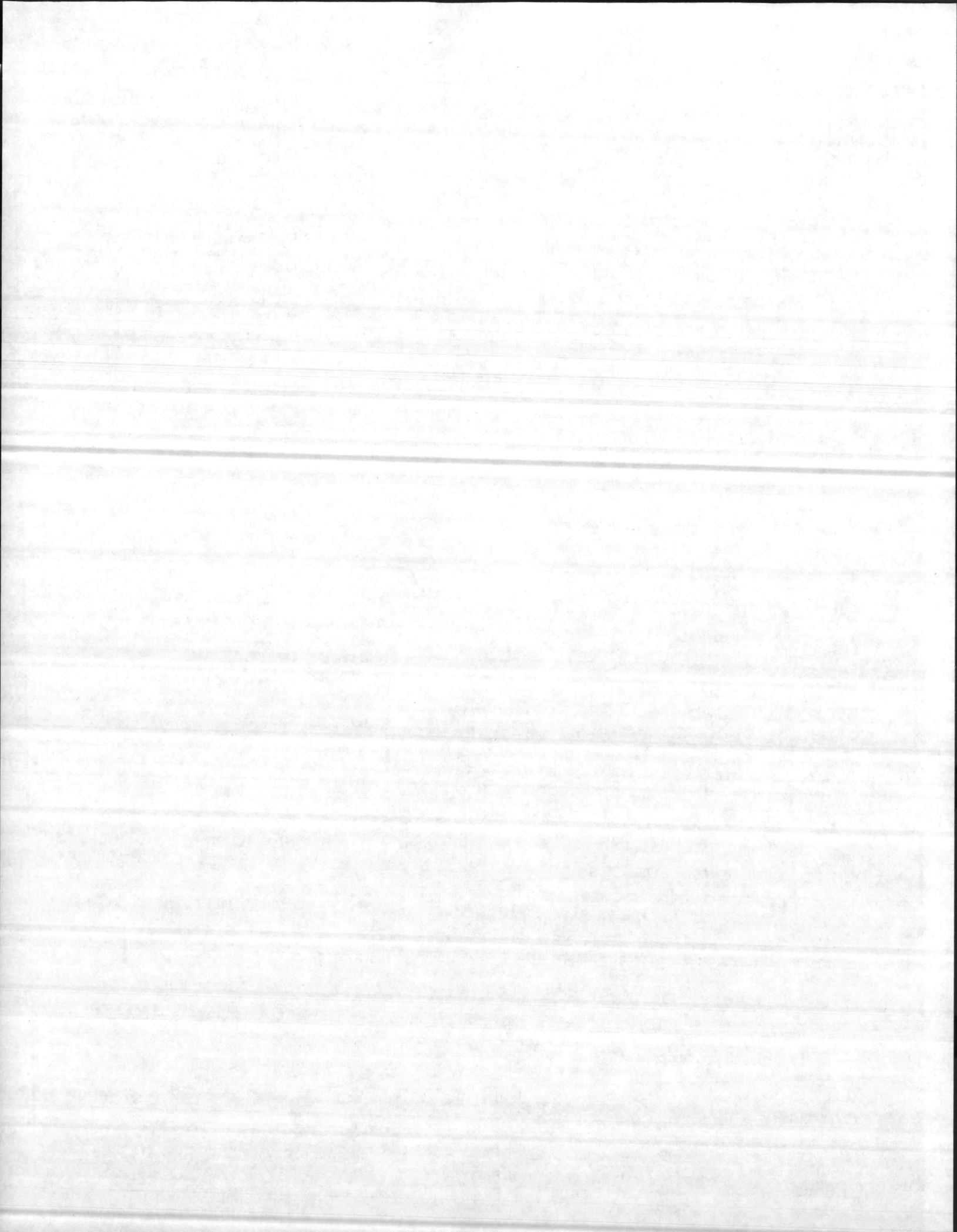
FOR NAVAL REGIONAL MED. CTR.  
 CAMP LEJEUNE, N.C.  
 S.O. 4502

SOMAT CORPORATION  
 Pomeroy, Penna. 19367

**SOMAT**

TITLE:  
 SOMAT SPC-50AS  
 INSTALLATION DRAWING  
 ITEM 1 REF. DWG. F-2249A

BY: WCS DATE: 10-4-79 DWG. No. A-101403A

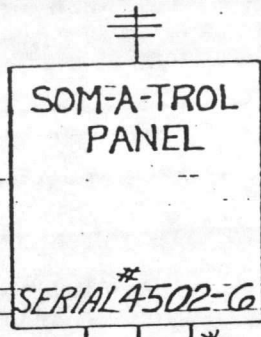


CUSTOMER'S POWER SUPPLY

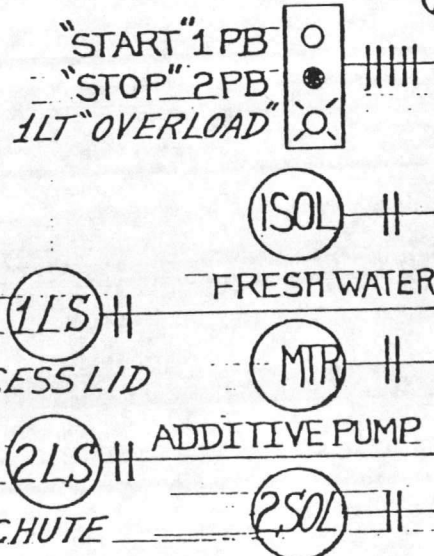
~~208V-3Ø-60HZ-40AMP~~

~~230V-3Ø-60HZ-40AMP~~

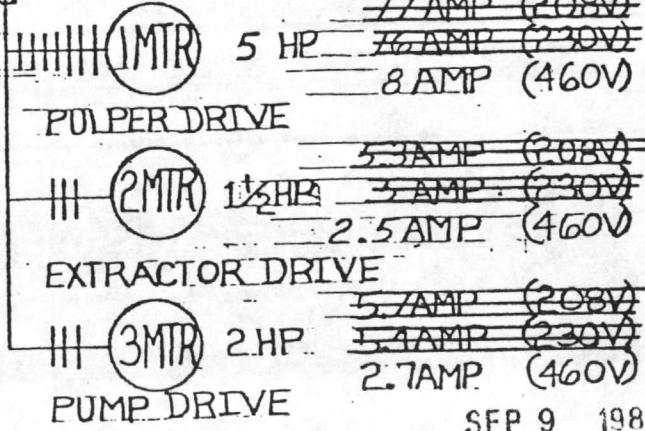
460V-3Ø-60HZ-20AMP



\*15 CONTROL



\*9 POWER & 4 CONTROL



~~7 AMP (208V)~~  
~~7.6 AMP (230V)~~  
8 AMP (460V)

~~5.3 AMP (208V)~~  
~~5 AMP (230V)~~  
2.5 AMP (460V)

~~5.7 AMP (208V)~~  
~~5.4 AMP (230V)~~  
2.7 AMP (460V)

SEP 9 1981

© SOMAT CORPORATION, 1981  
ALL RIGHTS RESERVED

\*3 CONTROL (SEE NOTE 4)

NOTES:

1. PANELS, OPERATOR DEVICES AND ELECTRIC VALVES BY SOMAT.
2. MOUNTING OF EQUIPMENT, POWER SUPPLIES AND ALL INTERCONNECTING WIRING NOT BY SOMAT
3. GROUND ALL ELECTRICAL EQUIPMENT.
4. CONDUCTORS CARRY LOW AC CURRENTS. DO NOT RUN IN CONDUIT WITH AC POWER OR CONTROL WIRING
5. (\*) NOT BY SOMAT CORP.
6. CONTROL CIRCUIT TO BE 115V NOMINAL

ELECTRICAL LEGEND:

- MTR - MOTOR
- SOL - SOLENOID VALVE
- PB - PUSH BUTTON
- LT - PILOT LIGHT
- LS - LIMIT SWITCH
- WLCT - WATER LEVEL CAPILLARY TUBE

NOTICE  
This is a preliminary design of Somat Corporation. Reproduction, modification or use of any assembly, independently, or part indicated herein, or the use of the drawings of any such assembly, independently or part to permit the use of a assembly authorized or covering by Somat Corporation.

FOR  
NAVAL REGIONAL MEDICAL CENTER  
CAMP LEJEUNE, N.C.

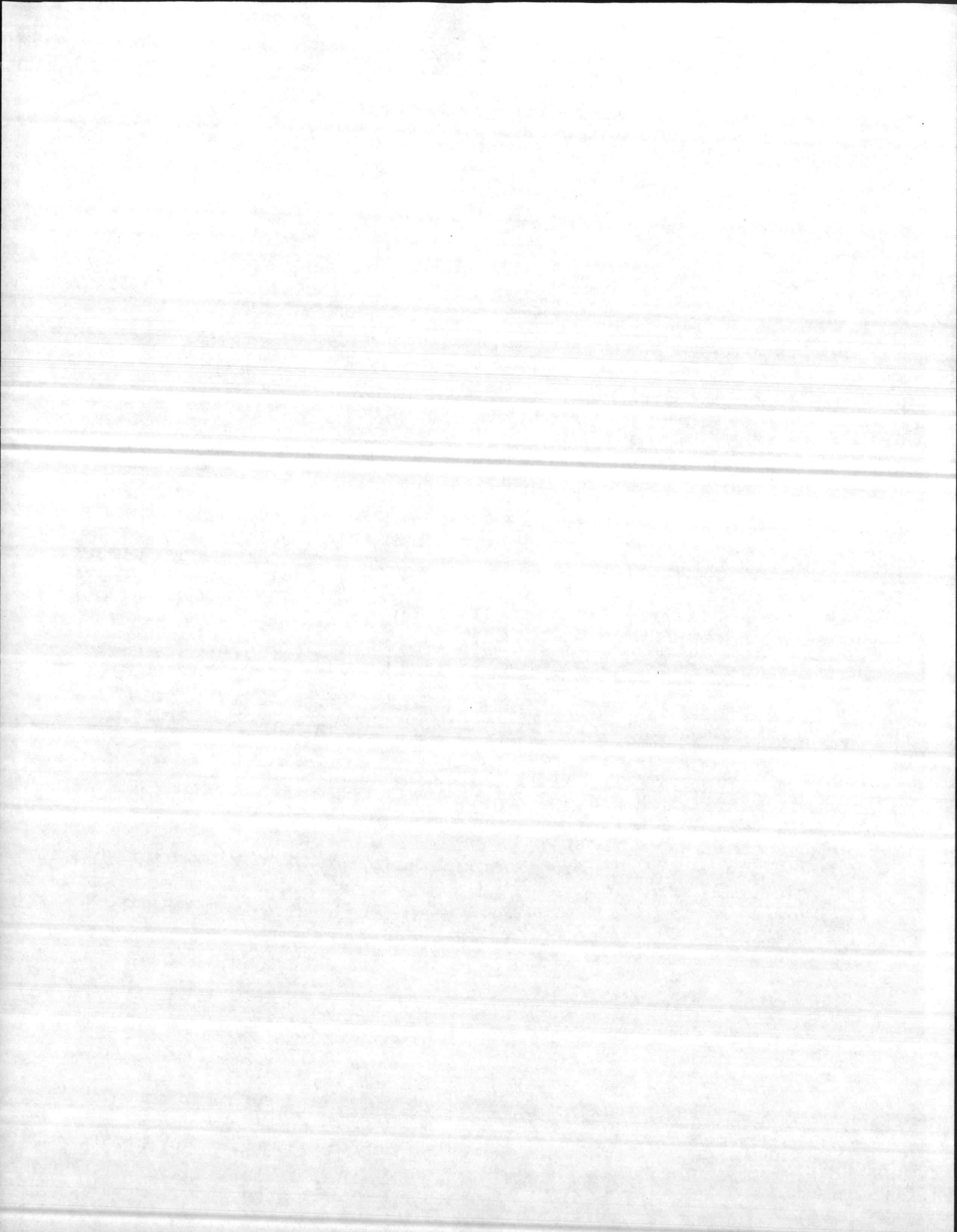
TITLE:  
WIRING DIAGRAM  
SPG50 & SPG50A PULPER W/PUMP

SOMAT CORPORATION  
Pomeroy, Penna. 19367

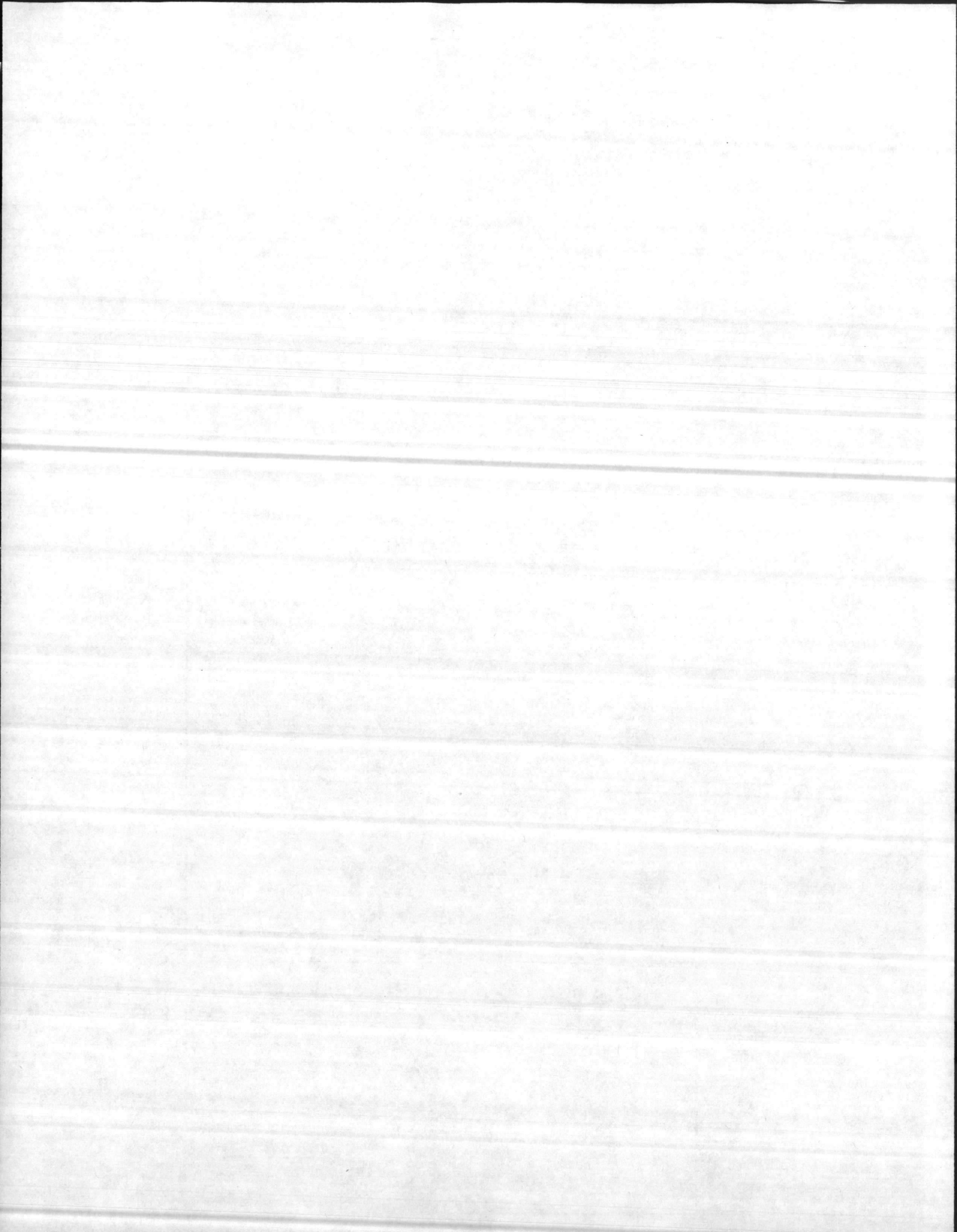


BY J VH DATE 7-2-80 DWG. No. A-102344-3

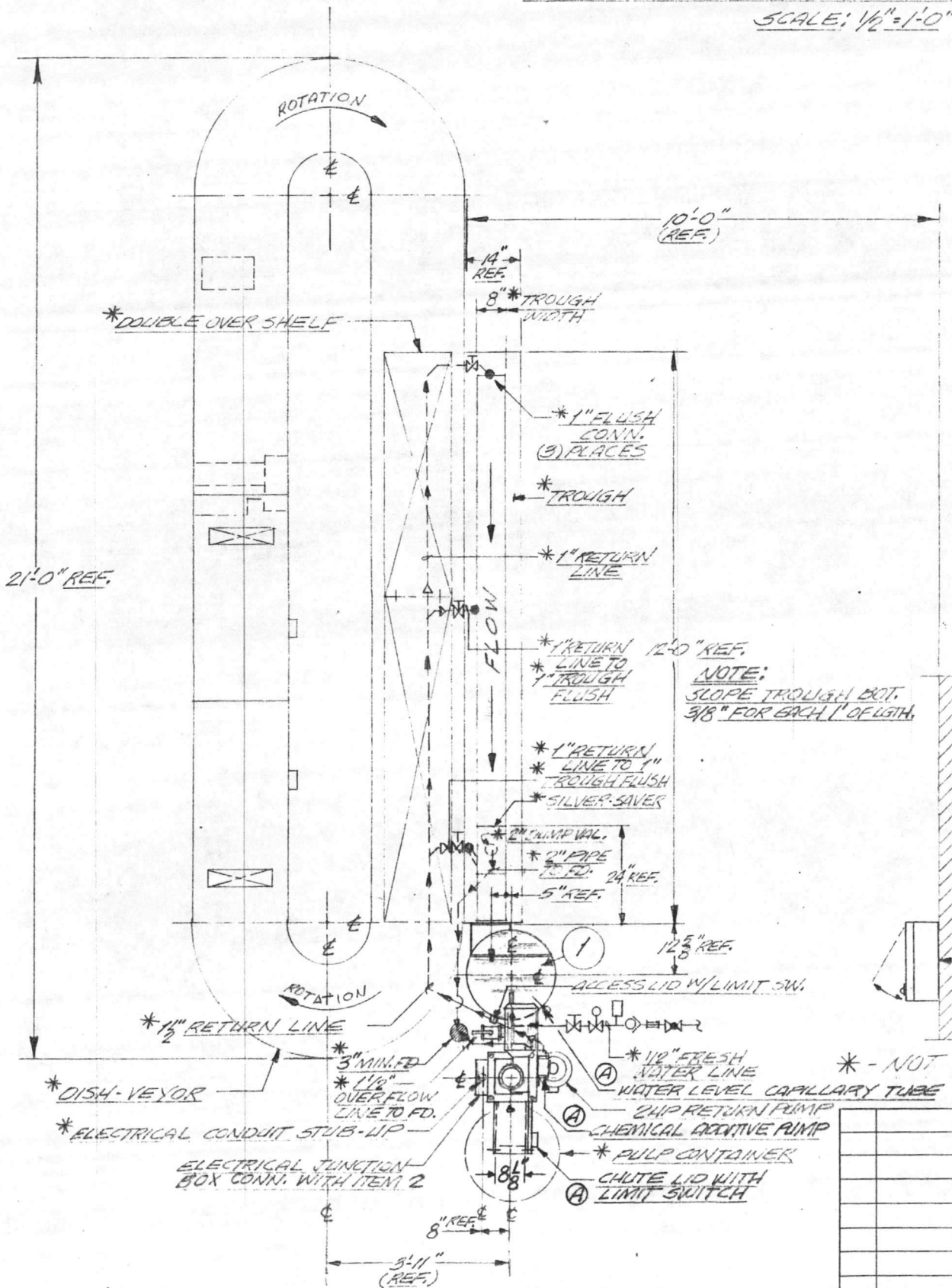








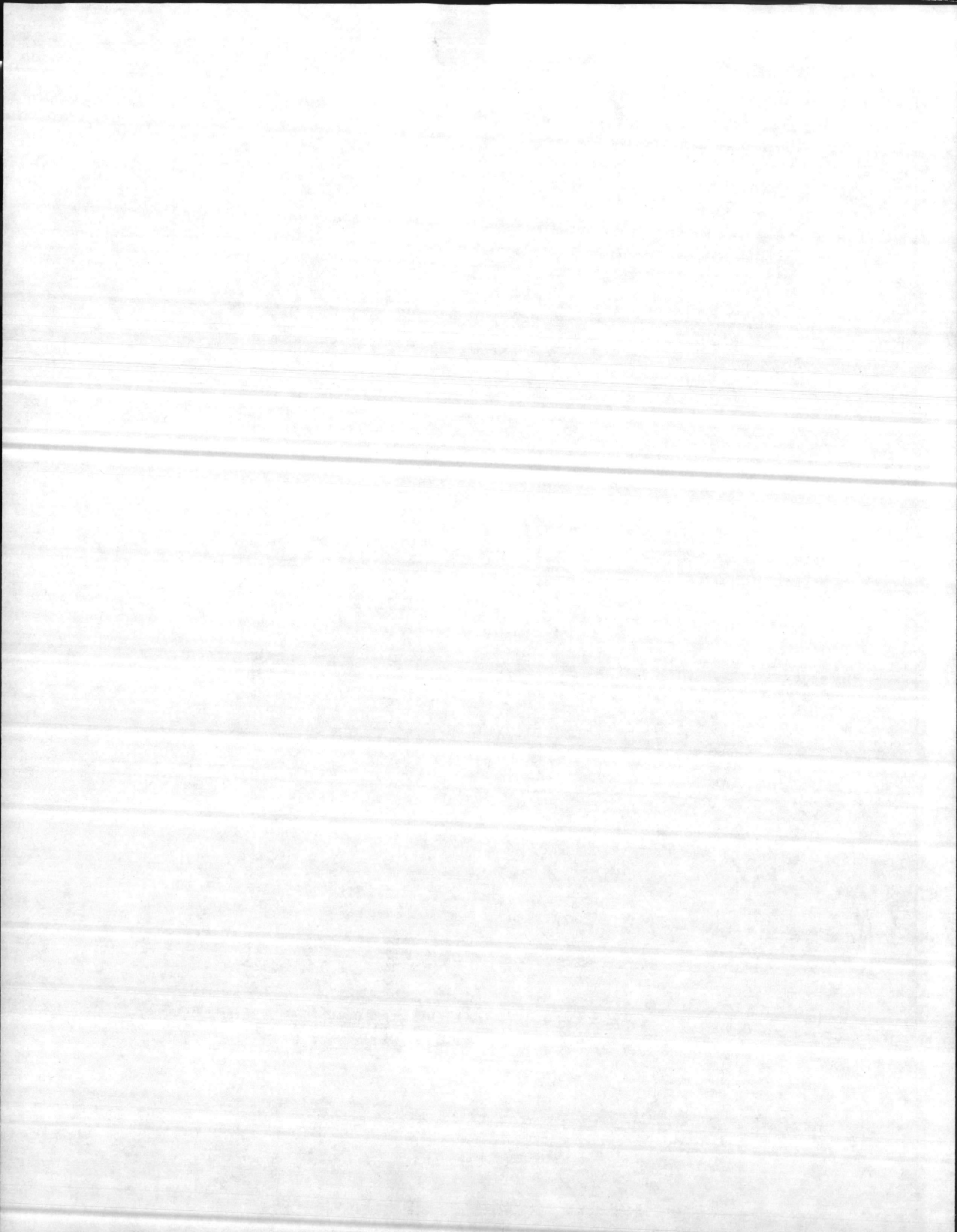
PLAN VIEW OF DISH  
SCALE: 1/2" = 1'-0"



\* - NOT

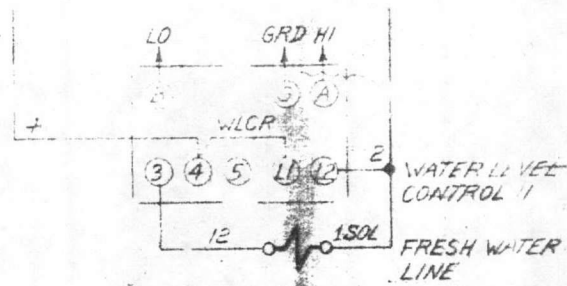
A	ADDED
	ADDITIVE
REV.	



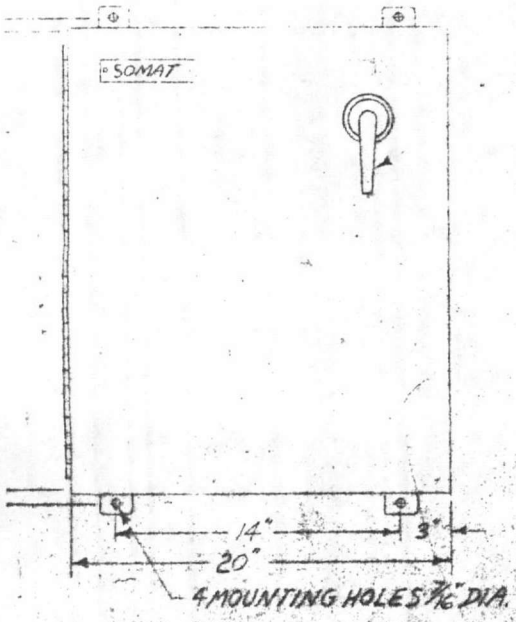




9  
11  
12



DISCONNECT HANDLE



SEQUENCE OF OPERATION

- 1-TURN DISCONNECT SWITCH 'DISC' TO 'ON' POSITION
- 2-UNLOCK STOP BUTTON 2PB
- 3-PRESS START BUTTON 1PB
  - A-MOTORS 1MTR, 2MTR, 3MTR, START & ADDITIVE PUMP RUNS
  - B-WLCR (N.O.) CONTACT IS CLOSED ENERGIZING SOLENOID VALVE 150V FILLING PULPER TANK WITH WATER UNTIL CONTACT OPENS SHUTTING OFF WATER
  - C-WHEN MOTOR 1MTR IS OVERLOADED AN INCREASE IN MOTOR TEMPERATURE WILL CLOSE CONTACT 11AS LIGHTING OVERLOAD PILOT LIGHT 1LT
  - D-CONTINUOUS OVERLOADING WILL OPEN CONTACT 11AS SHUTTING DOWN SYSTEM

SEP 9 1981  
© SOMAT CORPORATION, 1981  
ALL RIGHTS RESERVED

LAST NUMBER USED: 13

LEGEND:

- CB- CIRCUIT BREAKER
- DISC- DISCONNECT SWITCH
- GRD- GROUND
- M- MOTOR STARTER
- MTR- MOTOR
- OL- OVERLOAD RELAY
- PB- PUSHBUTTON
- WLCR- WATER LEVEL CONTROL RELAY
- 150V- SOLENOID VALVE
- T- TRANSFORMER
- TB- TERMINAL BLOCK
- LA- LOCKING ATTACHMENT
- 35- SELF-LOCKING SWITCH
- TR- TIME DELAY RELAY

**SOMAT** WASTE HANDLING SYSTEMS

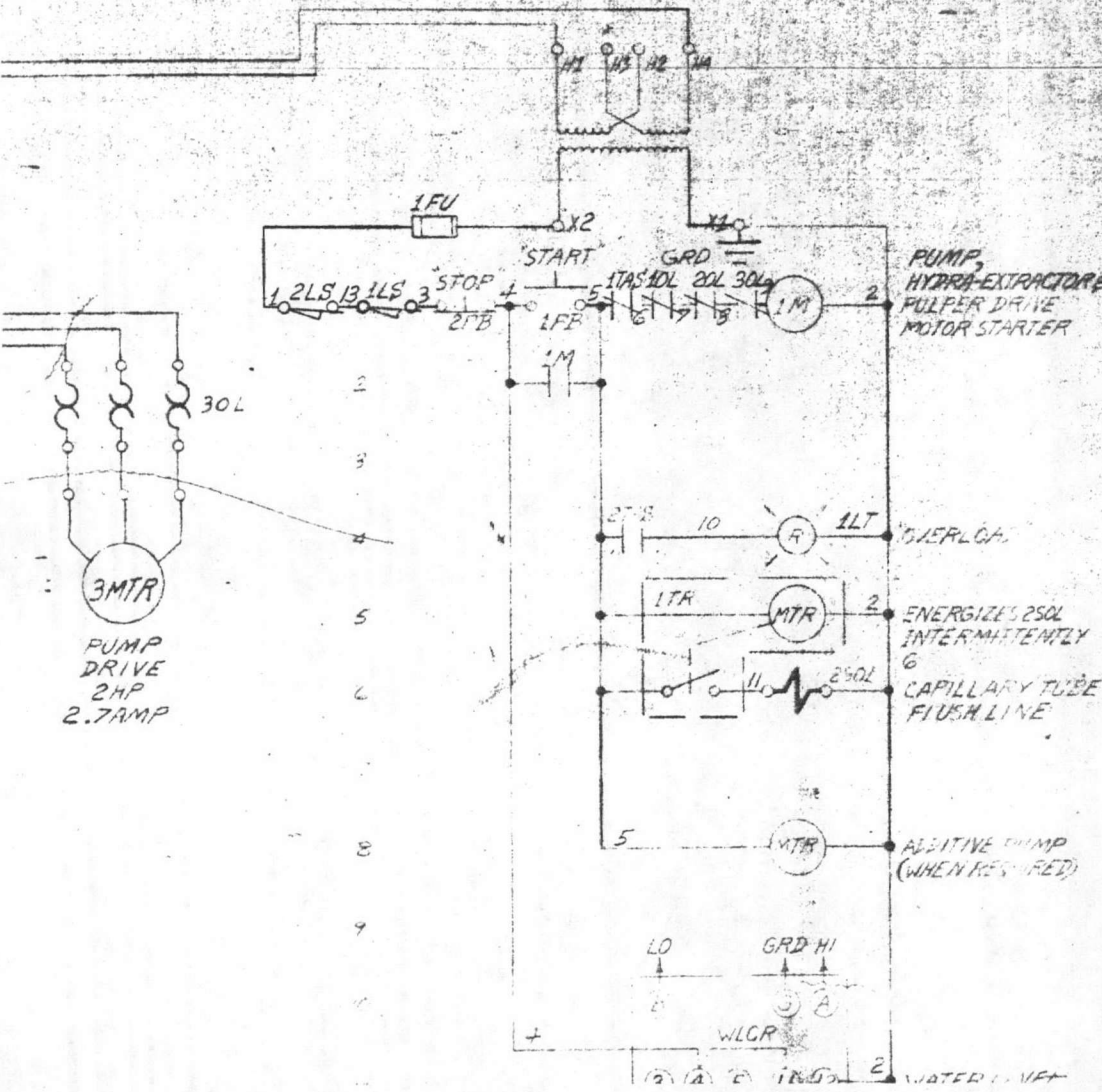
SOMAT CORPORATION		BOX 831 COATESVILLE, PA	
<p>SOM-A-TROL PANEL FOR MODEL SPC-50A SPC-50A W/PUMP</p>			
460V-3Ø-60HZ-20AMP		<p>NOTICE THIS IS A PROPRIETARY DESIGN OF SOMAT CORPORATION. REPRODUCTION, MANUFACTURE OR USE OF ANY PART THEREOF WITHOUT THE WRITTEN PERMISSION OF SOMAT CORPORATION IS STRICTLY PROHIBITED.</p>	
MATERIAL:		DATE: 7-20	
DRAWN BY: JWH		REV: 1	
CHECKED BY:		D-102361	



BILL OF MATERIAL

DWG. NO. D-102361-5

QTY	SYM	PART NAME	DESCRIPTION	P.C.	CODE NO.
1		ENCLOSURE	JIC BOX HOFFMAN #A 24C20A		88370
1		FRAME	HOFFMAN #A 24F20		76705
1		CIRCUIT BREAKER	ABBV - 15AMP 3-POLE WEST EHB-30152		15509
1		MECHANISM	CIRCUIT BREAKER WEST #373D758505		40815
1		HANDLE	CIRCUIT BREAKER WEST #477446651		40825
1		SHAFT	CIRCUIT BREAKER WEST #777446616		40829
1		1M STARTER	SIZE 1 WEST #E00M1C0D		58710
2		RELAY	OVERLOAD WEST #AN13P		51813
3		10L HEATER	WEST #FH40		25760
3		20L HEATER	WEST #FH27		25630
3		30L HEATER	WEST #FH28		25610
1		1T TRANSFORMER	250VA 460V 115V WEST #1F0895		62305
1		FUSE BLOCK	WEST #25TA574601		32500
1		FUSE	DUAL ELEMENT 2 1/2 AMP TYPE MDL		
2		GRD GROUND LUG	#2-12 WIRE LLSCO #TA-2		60925
25		1B TERMINAL BLOCK	10 #8 WIRE AB #1492-CA2		60905
2		END BARRIER	TERMINAL AB #1492-N1G		60920
4		RETAINING CLIP	TERMINAL AB #1492-N2		22100
1		2PB PUSHBUTTON	AB #800H-R6A W/ STOP NAMEPLATE		60059
1		1LA LOCK ATTACHMENT	AB #800H-N6		40198
1		1PB PUSHBUTTON	AB #800H-RIAWI START NAMEPLATE		60058
1		ENCLOSURE	30 UNIT AB #800H-3HZ4		
1		WLCR RELAY	HONEYWELL TYPE R7089B 1004		51867
1		1TR TIMER	ATC #32AC-C1 D3G R-1-A-C1X		41354
1		1T PILOT LIGHT	AB #800H-FR1GRW/ OVERLOAD NAMEPLATE		40017



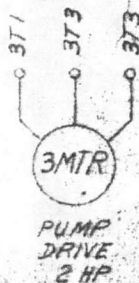
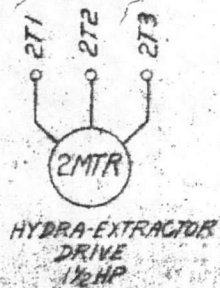
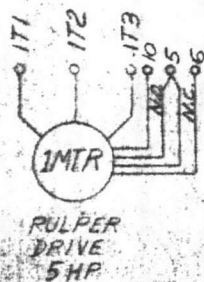




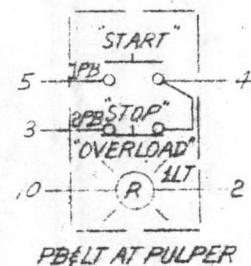


11 — 2  
250L IN FLUSH LINE  
AT CAPILLARY TUBE

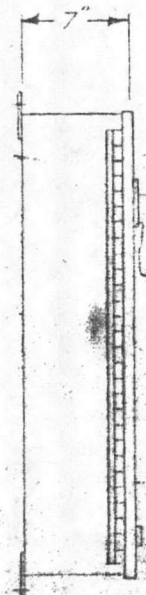
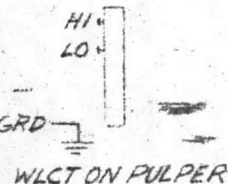
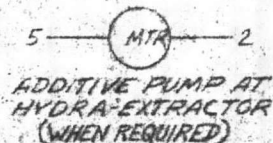
12 — 2  
150L IN FRESH WATER  
LINE AT PULPER



1 — 13  
2LS ON HE CHUTE



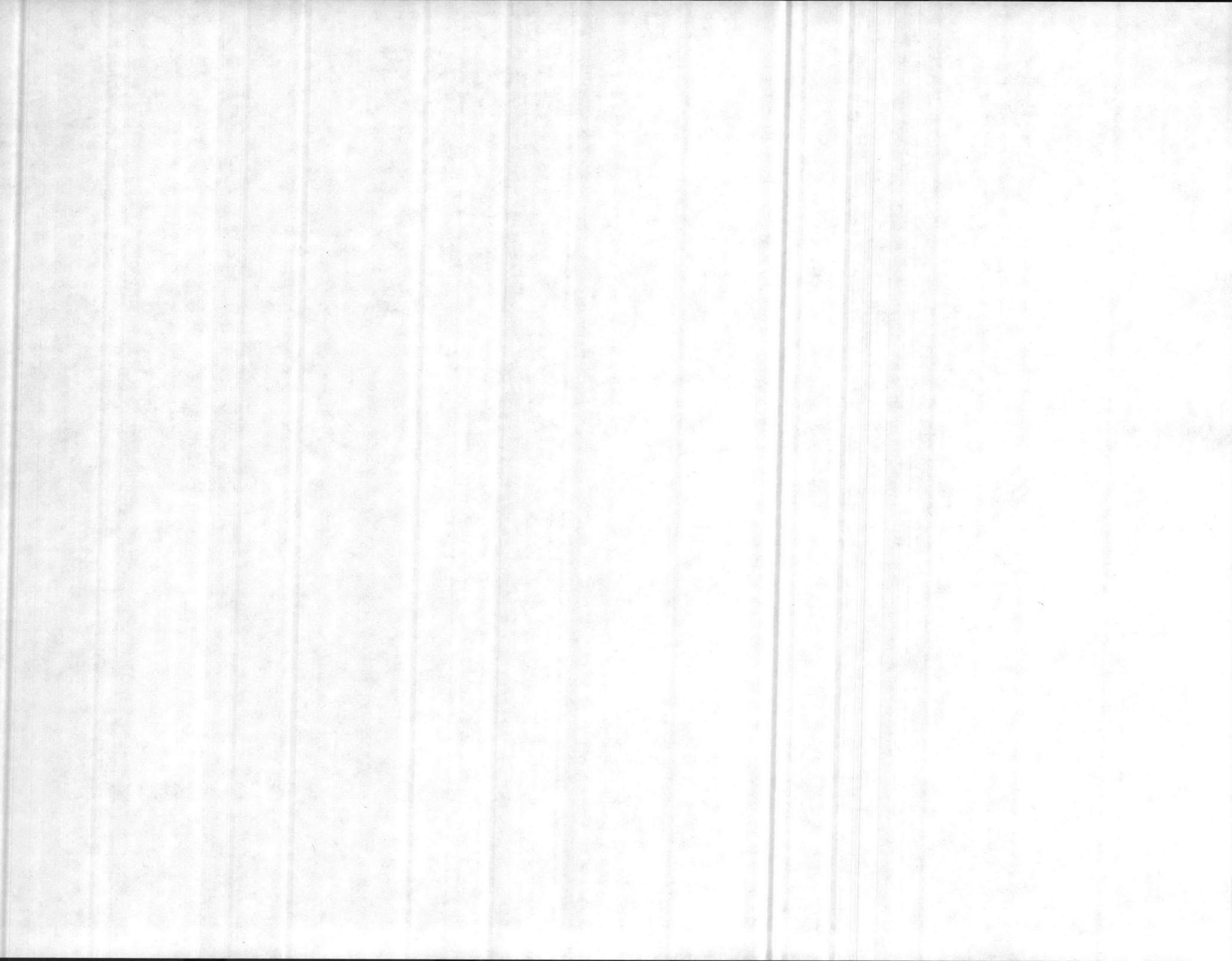
13 — 3  
1LS ON ACCESS LID

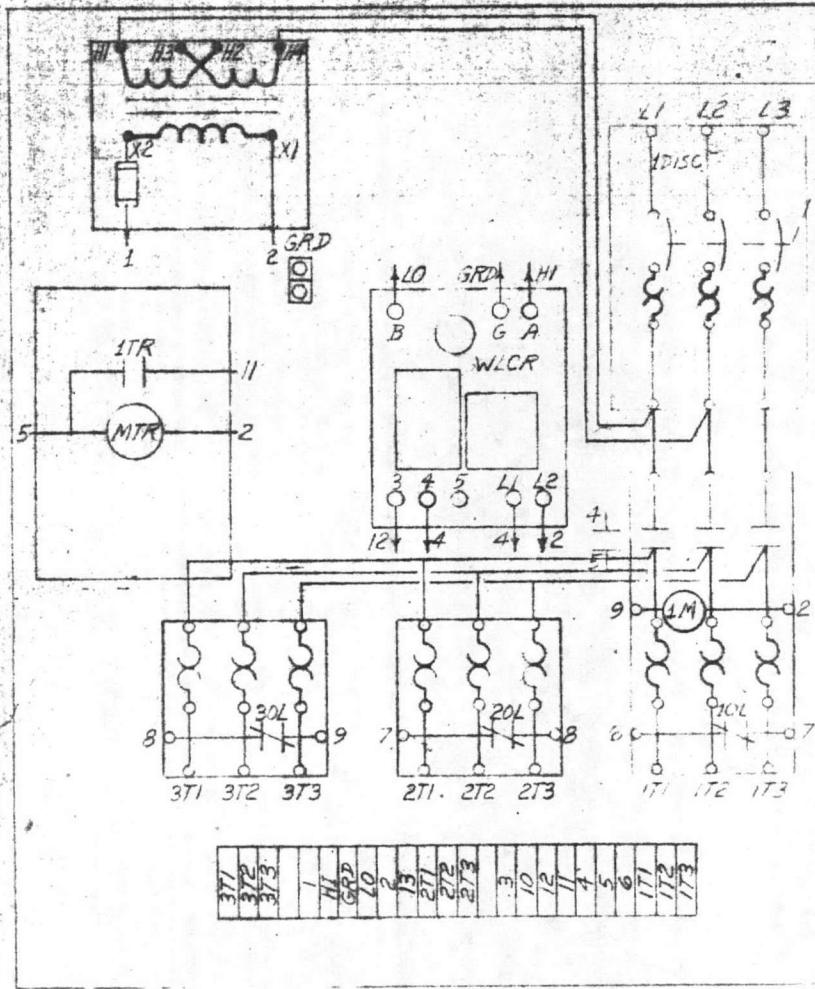


## EXTERNAL WIRING CONNECTIONS

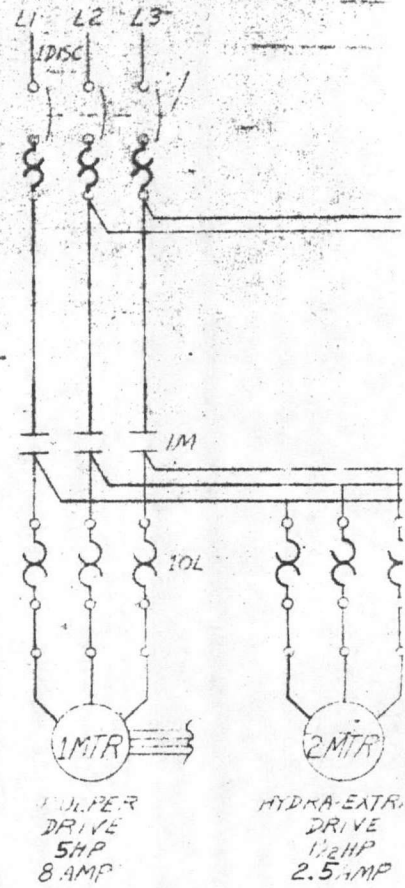
### NOTES

1. PANELS, OPERATOR DEVICES, ELECTRIC VALVES BY SOMAT
2. MOUNTING OF EQUIPMENT, POWER SUPPLIES, ALL INTERCONNECTING WIRING NOT BY SOMAT
3. GROUND ALL ELECTRICAL EQUIPMENT
4. SHOP NOTE USE TEMPLATE DWG. 298
5. CONDUCTORS CARRY LOW A.C. CURRENT. DO NOT RUN IN SAME CONDUIT WITH A.C. POWER OR CONTROL WIRING
6. WHEN LIMIT SWITCH 1LS IS NOT REQUIRED JUMPER TERMINAL 1 TO 3





CUSTOMER'S POWER SUPPLY  
460V-3Ø-60HZ-20A



1 — 13  
2LS ON HE CHUTE



