

**VALUABLE**

SUBJECT Location of Existing Tee at  
Water Line to School House and  
Sewer Pump Station on  
Pineville Point Road (Brewster Blvd)

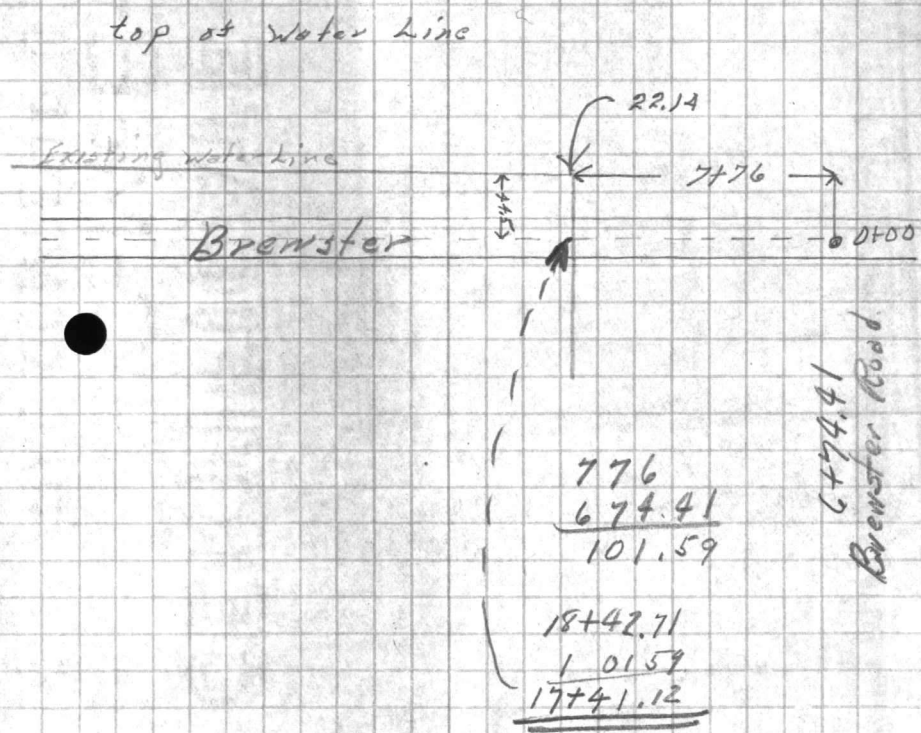
Return To  
 Public Works  
 Office  
 Camp Lejeune  
 North Carolina

FIELD PARTY  
Hamilton In Charge  
 \_\_\_\_\_ Instrument  
 \_\_\_\_\_ Notes  
 \_\_\_\_\_ Tape Read  
 \_\_\_\_\_ Tape or Rod  
 \_\_\_\_\_ Tape or Rod  
 \_\_\_\_\_ Instrument No.  
 \_\_\_\_\_ Tape No.

WEATHER  
 Clear \_\_\_\_\_  
 Cloudy \_\_\_\_\_  
 Windy \_\_\_\_\_  
 Rain \_\_\_\_\_  
 Fair \_\_\_\_\_  
 Snow \_\_\_\_\_  
 Hot \_\_\_\_\_  
 Moderate \_\_\_\_\_  
 Cold \_\_\_\_\_  
 Fog \_\_\_\_\_

FILE No. 120-G  
 Fldr. No. \_\_\_\_\_  
 Sheet 21 of 1  
 Date June 19 1946  
 Quad. No. 120

Station	Dist.	Angle	+	H. I. Bearing	Ver: Ang. Diff.	Elevation
B177#1		6 75	30	76		24 01
					8 62	22 14



VALUABLE  
Return to  
Field Work  
Office  
Camp Liaison  
North Carolina

SUBJECT

\_\_\_\_\_

\_\_\_\_\_

\_\_\_\_\_

Station \_\_\_\_\_  
Date \_\_\_\_\_  
Angle \_\_\_\_\_  
H. I. \_\_\_\_\_  
D. I. \_\_\_\_\_  
Elevation \_\_\_\_\_

FIELD PARTY

Name in Charge \_\_\_\_\_  
Instrument \_\_\_\_\_  
Y-axis \_\_\_\_\_  
Face Read \_\_\_\_\_  
Time on Foot \_\_\_\_\_  
Time on Road \_\_\_\_\_  
Remarks \_\_\_\_\_  
Task No. \_\_\_\_\_

WEATHER

Clear \_\_\_\_\_  
Cloudy \_\_\_\_\_  
Rain \_\_\_\_\_  
Snow \_\_\_\_\_  
Fog \_\_\_\_\_  
Thunder \_\_\_\_\_  
Lightning \_\_\_\_\_  
Notes on Weather \_\_\_\_\_  
Batted by \_\_\_\_\_

Field No. \_\_\_\_\_  
Date \_\_\_\_\_

VALUABLE

SUBJECT Utilities at Malvern Control Bldg.

Return To  
Public Works  
Office  
Camp Lejeune  
North Carolina

FIELD PARTY

Hamilton In Charge  
\_\_\_\_ Instrument  
\_\_\_\_ Notes  
\_\_\_\_ Tape Read  
\_\_\_\_ Tape or Rod  
\_\_\_\_ Tape or Rod  
\_\_\_\_ Instrument No.  
\_\_\_\_ Tape No.

WEATHER

Clear  
Cloudy  
Windy  
Rain  
Fair

Snow  
Hot  
Moderate  
Cold  
Fog

FILE No. 120-6

Fldr. No. \_\_\_\_\_

Sheet #1 of 2

Date 7/21 1950

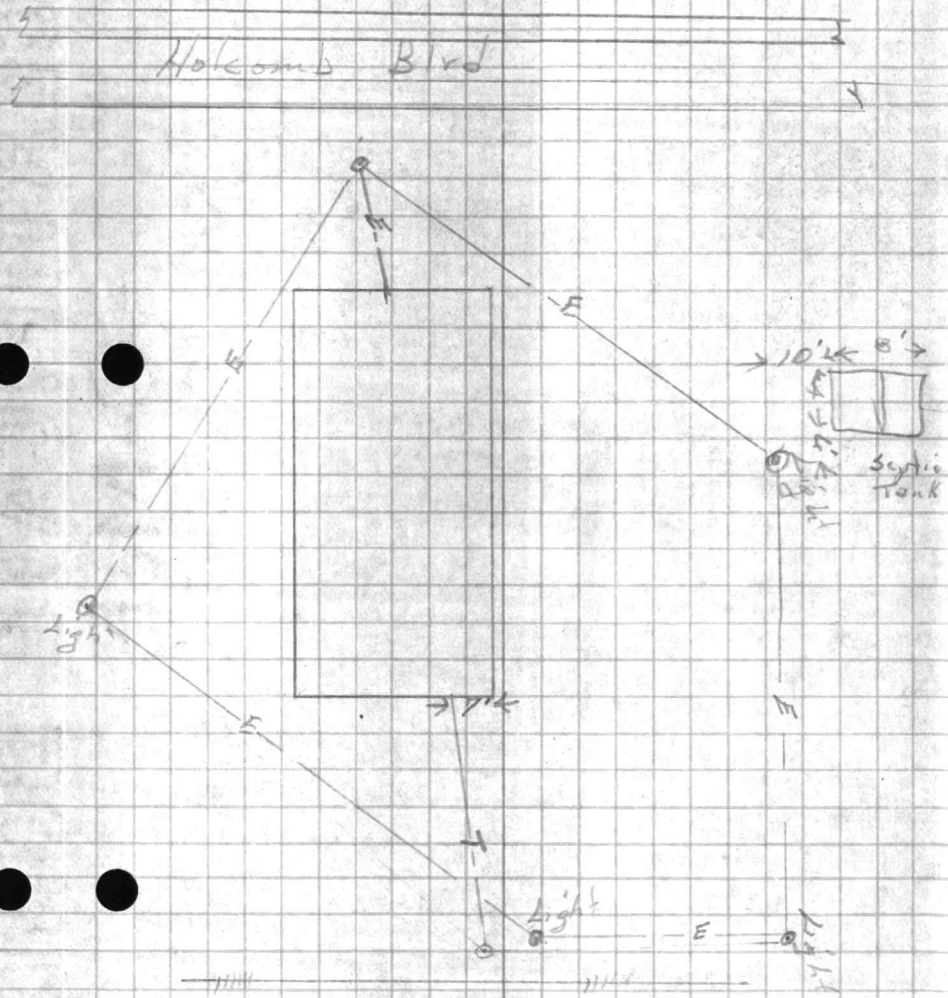
Figured By \_\_\_\_\_

Notes Checked By \_\_\_\_\_

Plotted By \_\_\_\_\_

Quad. No. \_\_\_\_\_

Station	Dist.	Angle "	+	H. I. Bearing	Ver: Ang. Diff.	Elevation
---------	-------	---------	---	---------------	-----------------	-----------







VALUABLE

SUBJECT LOCATION WATER  
& SEWER LINE MARLINA  
CONTROL

Return To  
Public Works  
Office  
Camp Lejeune  
North Carolina

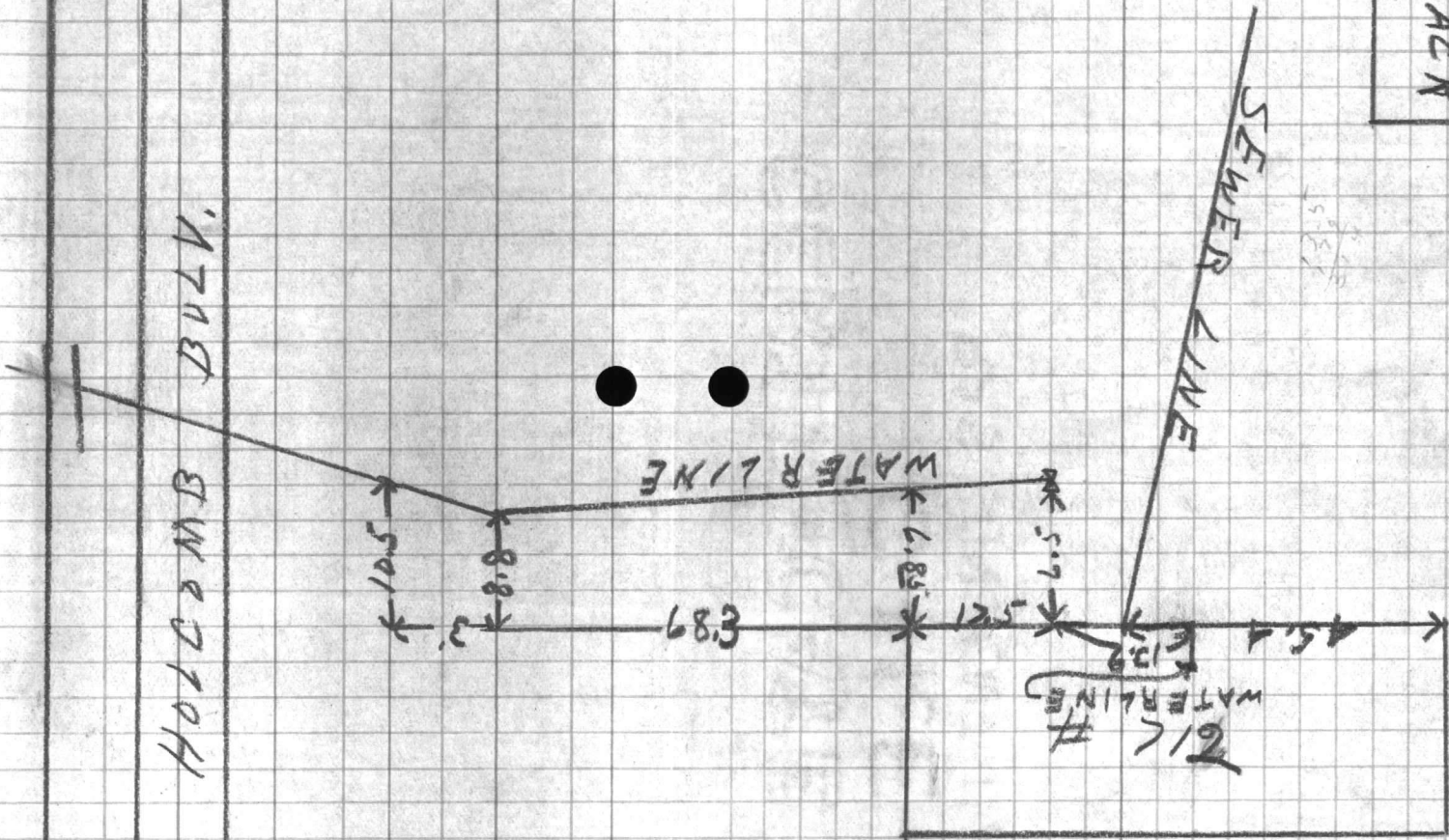
FIELD PARTY  
DENNS In Charge  
Instrument \_\_\_\_\_  
Notes \_\_\_\_\_  
Tape Read \_\_\_\_\_  
Tape or Rod \_\_\_\_\_  
Tape or Rod \_\_\_\_\_  
Instrument No. \_\_\_\_\_  
Tape No. \_\_\_\_\_

WEATHER  
Clear \_\_\_\_\_  
Cloudy \_\_\_\_\_  
Windy \_\_\_\_\_  
Rain \_\_\_\_\_  
Fair \_\_\_\_\_  
Snow \_\_\_\_\_  
Hot \_\_\_\_\_  
Moderate \_\_\_\_\_  
Cold \_\_\_\_\_  
Fog \_\_\_\_\_  
Figured By \_\_\_\_\_  
Notes Checked By \_\_\_\_\_  
Plotted By \_\_\_\_\_

FILE No. 120-G  
Fldr. No. \_\_\_\_\_  
Sheet 2 of 3  
Date 7/20 1950

Quad. No. \_\_\_\_\_

Station    Dist.    Angle "    +    H. I. Bearing    Ver: Ang. Diff.    Elevation



WASH  
RACK

1" WATER LINE

5.8  
5.1

WATERLINE  
# 212

Return To  
Public Works  
Office  
Camp Lejeune  
North Carolina

SUBJECT

Station  
Dist  
Angle  
Bearing  
H. I.  
Year  
Elevation

FIELD PARTY

Instrument No.  
Type of Trip  
Type of Rod  
Type of Tape  
Notes  
Elevation  
Remarks

WEATHER

Clear  
Cloudy  
Windy  
Cold  
Fog  
Faint  
Checked by  
Plotted by

FILE NO.

Sheet  
Date



VALUABLE

SUBJECT

Cont

Return To  
Public Works  
Office  
Camp Lejeune  
North Carolina

FIELD PARTY

In Charge \_\_\_\_\_  
Instrument \_\_\_\_\_  
Notes \_\_\_\_\_  
Tape Read \_\_\_\_\_  
Tape or Rod \_\_\_\_\_  
Tape or Rod \_\_\_\_\_  
Instrument No. \_\_\_\_\_  
Tape No. \_\_\_\_\_

WEATHER

Clear \_\_\_\_\_  
Cloudy \_\_\_\_\_  
Windy \_\_\_\_\_  
Rain \_\_\_\_\_  
Fair \_\_\_\_\_  
Snow \_\_\_\_\_  
Hot \_\_\_\_\_  
Moderate \_\_\_\_\_  
Cold \_\_\_\_\_  
Fog \_\_\_\_\_

FILE No. 110-6

Fldr. No. \_\_\_\_\_

Sheet 343

Figured By \_\_\_\_\_

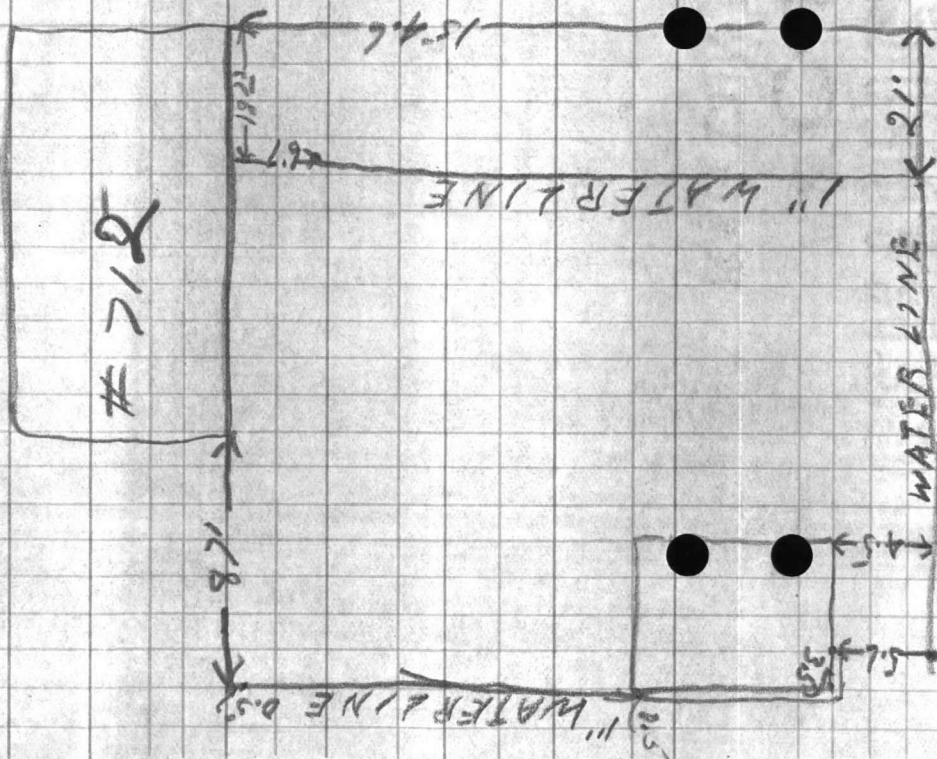
Notes Checked By \_\_\_\_\_

Plotted By \_\_\_\_\_

Date \_\_\_\_\_ 19 \_\_\_\_\_

Quad. No. \_\_\_\_\_

Station	Dist.	Angle	"	+	H. I. Bearing	Ver: Ang. Diff.	Elevation
---------	-------	-------	---	---	------------------	--------------------	-----------



North Carolina  
Cannon Station  
Office  
Public Works  
Region 7a

SUBJECT

Station of Dial + Angle  
H.I. + Gaining  
V.P. Ang. Elevation  
D.M.

FIELD PARTY

In Charge \_\_\_\_\_  
Instrument \_\_\_\_\_  
Notes \_\_\_\_\_  
Tape Read \_\_\_\_\_  
Type of Rod \_\_\_\_\_  
Approx Rod \_\_\_\_\_

WEATHER

Clear \_\_\_\_\_  
Cloudy \_\_\_\_\_  
Windy \_\_\_\_\_  
Mist \_\_\_\_\_  
Cold \_\_\_\_\_  
Rain \_\_\_\_\_  
Fog \_\_\_\_\_

Form No. \_\_\_\_\_

Print No. \_\_\_\_\_

Sheet No. \_\_\_\_\_

Date \_\_\_\_\_

Plotted by \_\_\_\_\_

Notes Checked by \_\_\_\_\_

Checked by \_\_\_\_\_

Field No. \_\_\_\_\_

Form No. \_\_\_\_\_