

ATLANTIC DIVISION
NAVAL FACILITIES ENGINEERING COMMAND
MIDDLEBURG, VIRGINIA, 22111

APPROVED: _____
APPROVED AS NOTED: _____
DISAPPROVED: _____
SUBJECT TO THE REQUIREMENTS OF CONTRACT NO. _____

APPROVAL OF A SUBMITTAL DOES NOT INCLUDE APPROVAL OF ANY DEVIATION FROM THE CONTRACT REQUIREMENTS UNLESS THE CONTRACTOR CALLS ATTENTION TO AND SUPPORTS THE DEVIATION. THE CONTRACTOR SHALL BE RESPONSIBLE FOR PROVIDING PROPER PHYSICAL DIMENSIONS & WEIGHTS. COORDINATION OF TRADES, ETC., AS REQUIRED.

REVIEWER: *[Signature]* DATE: 2/10/63
FOR OFFICER IN CHARGE OF CONSTRUCTION

It is hereby certified that this (contract) (modification) is correct and approved in this behalf by the proposed to be incorporated into Contract Number: 114494-1. This is certified by the Contracting Officer and is subject to the approval of the Contracting Officer in the allocated amount, and is submitted Government approval.

Certified by: *[Signature]*
Date: 7 Jul 63

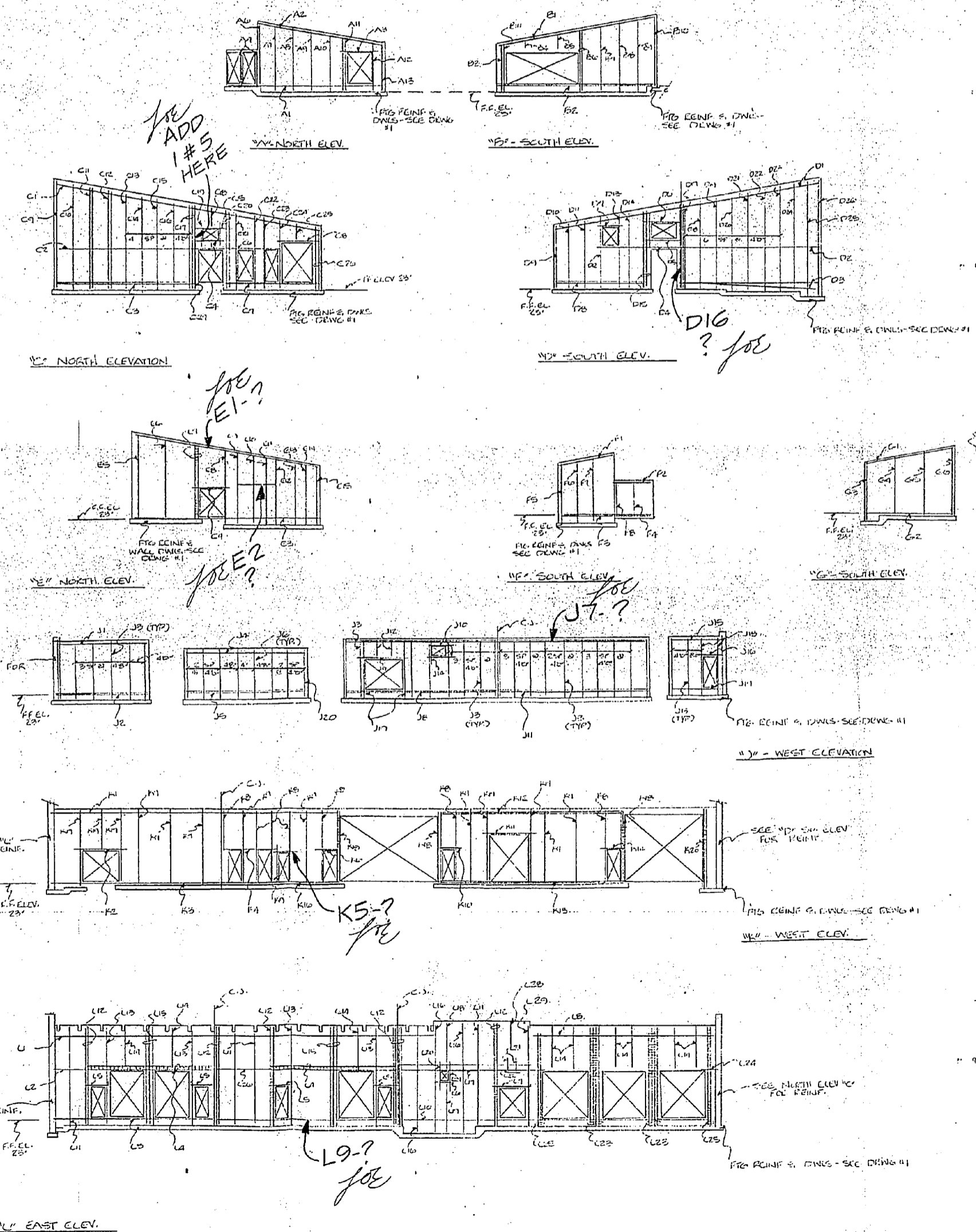
FOUNDATION & WALL POWERS

GRADE: 00	FEDERAL STEEL CORPORATION	RALEIGH DIVISION
PREFIC: A		P.O. BOX 25219
DWG LIST: A1, A2		RALEIGH, N.C. 27611
NO. TO FROM DATE		FOR APPROVAL ONLY
NO. TO FROM DATE	5 C A 1943	PLUMBING
NO. TO FROM DATE	2 C A 1943	HELIPAD
		CAMP LEJUNE, N.C.
		CONTRACTOR: TRAUER CONCO
		ARCHT: _____
		ENGR: NAVIER, VIRGINIA
DRAWN: _____	CHECKED: _____	DATE: _____
DWG. NO. _____		

[Handwritten notes:]
4/106
21



*SEE SCHEDULE FOR REINFORCING



HORIZONTAL & VERTICAL WALL REINFORCING			
A4 - NORTH ELEVATION			
MARK	NO. REIN	REINFORCING	TIES
A1	1	2#4x33-10	
A2	1	2#4x33-0	
A3	1	2#4x33-0	
A4	2	1#4x33-10	
A5	1	1#6 IN 40" LIPS LAP 20" 2#4x33-10	
A6	1	1#6 IN 40" LIPS LAP 20" 2#4x33-10	
A7	1	1#6 IN 40" LIPS LAP 20" 2#4x33-10	
A8	1	1#6 IN 40" LIPS LAP 20" 2#4x33-10	
A9	1	1#6 IN 40" LIPS LAP 20" 2#4x33-10	
A10	1	1#6 IN 40" LIPS LAP 20" 2#4x33-10	
A11	1	4#6 IN 40" LIPS LAP 20" 2#4x33-10	
A12	1	2#6 IN 40" LIPS LAP 20" 2#4x33-10	
A13	1	1#6 IN 40" LIPS LAP 20" 2#4x33-10	
B1 - SOUTH ELEVATION			
B1	1	2#4x40-0	
B2	1	2#4x40-0	
B3	1	1#6 IN 40" LIPS LAP 20" 2#4x40-0	
B4	1	1#6x2-10	
B5	1	1#6x4-2	
B6	1	4#6 IN 40" LIPS LAP 20" 4#4x40-0	
B7	1	1#6 IN 40" LIPS LAP 20" 2#4x40-0	
B8	1	1#6 IN 40" LIPS LAP 20" 2#4x40-0	
B9	1	1#6 IN 40" LIPS LAP 20" 2#4x40-0	
B10	1	1#6 IN 40" LIPS LAP 20" 2#4x40-0	

NOTES: 1. ALL REINFORCING TO BE PLACED IN THE WALLS TO BE REINFORCED TO THE FULL DEPTH OF THE WALL. 2. ALL REINFORCING TO BE PLACED IN THE WALLS TO BE REINFORCED TO THE FULL DEPTH OF THE WALL. 3. ALL REINFORCING TO BE PLACED IN THE WALLS TO BE REINFORCED TO THE FULL DEPTH OF THE WALL.

I hereby certify that the requirements (shown) and marked in this submittal that proceed to be incorporated into the contract drawings and specifications, and in submitting this submittal, I am certifying that the requirements are correct and complete.

Date: 7/18/83

FOR APPROVAL ONLY

ATLANTIC DIVISION
NAVAL FACILITIES ENGINEERING COMMAND
NORFOLK, VIRGINIA 23511

APPROVED _____
APPROVED AS NOTED _____
DISAPPROVED _____

SUBJECT TO THE REQUIREMENTS OF CONTRACT NO. _____

APPROVAL OF A SUBMITTAL DOES NOT INCLUDE APPROVAL OF ANY DEVIATION FROM THE CONTRACT REQUIREMENTS UNLESS THE CONTRACTOR CALLS ATTENTION TO AND SUPPORTS THE DEVIATION. THE CONTRACTOR SHALL BE RESPONSIBLE FOR PROVIDING PROPER PHYSICAL DIMENSIONS & WEIGHTS, COORDINATION OF TRADES, ETC., AS REQUIRED.

REVIEWER: *So Elden* DATE: 7/18/83
FOR OFFICER IN CHARGE OF CONSTRUCTION

DRAWING		PRINT RECORD		DATE		DATE	
NO.	REV.	NO.	REV.	DATE	DATE	DATE	DATE

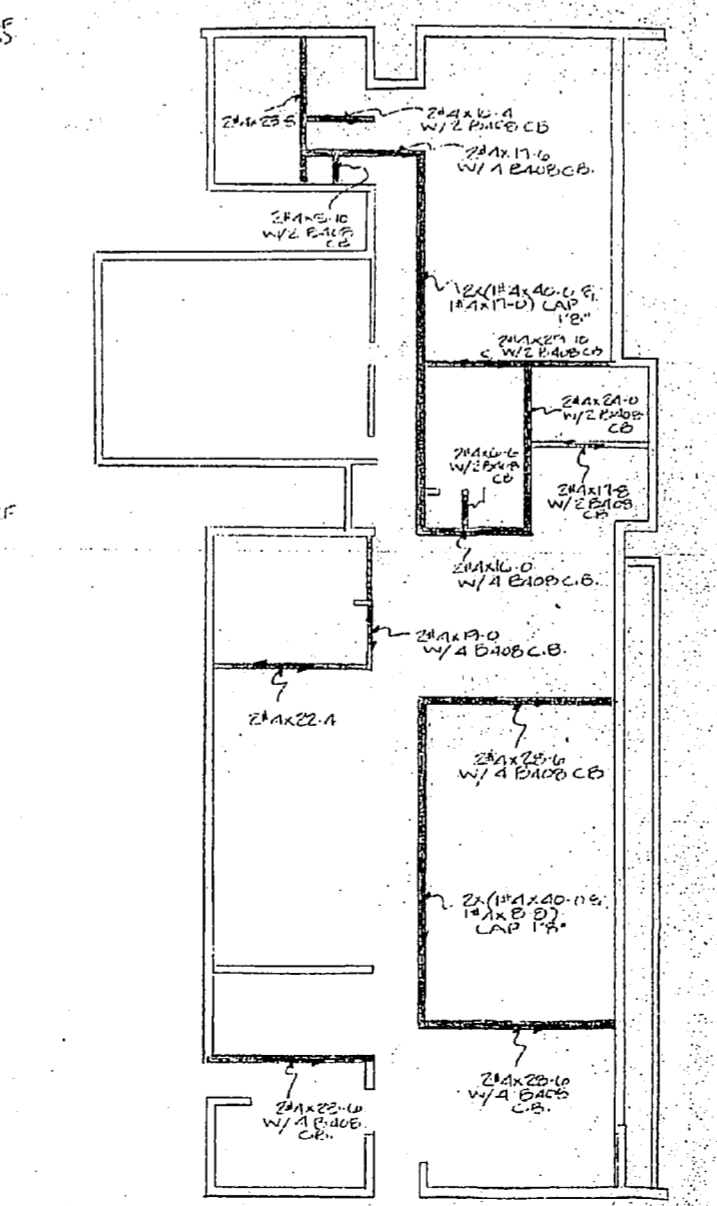
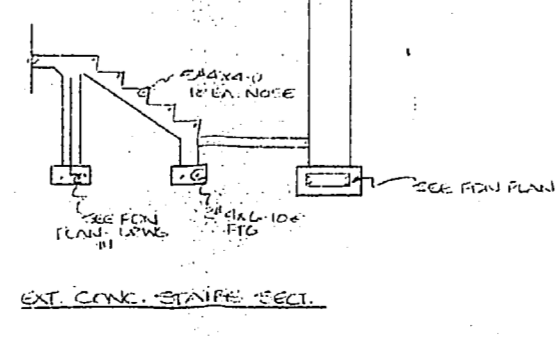
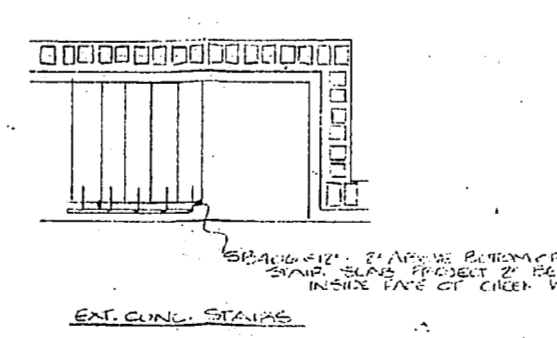
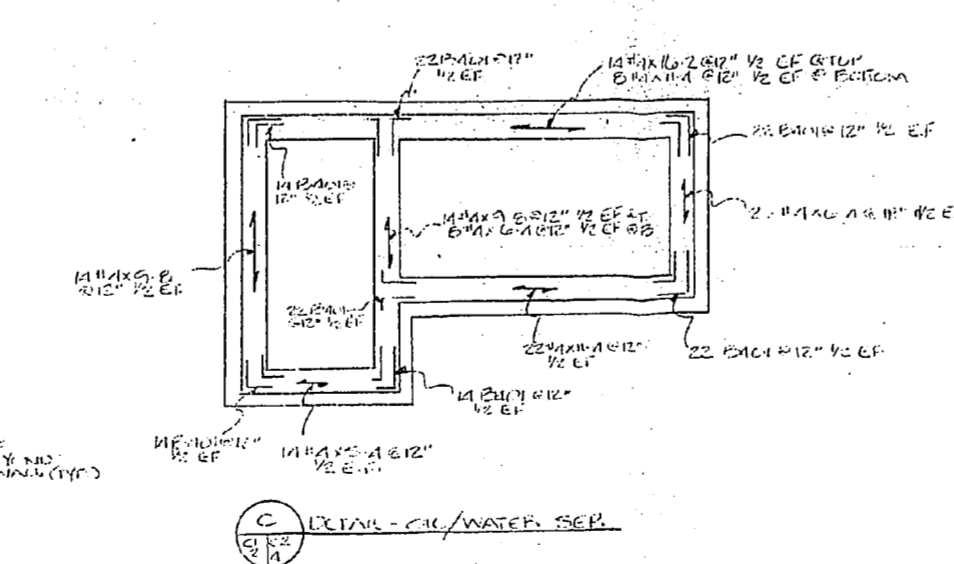
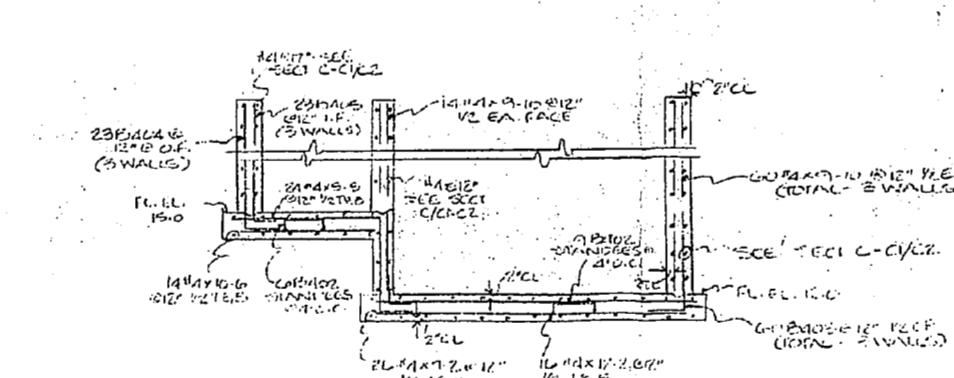
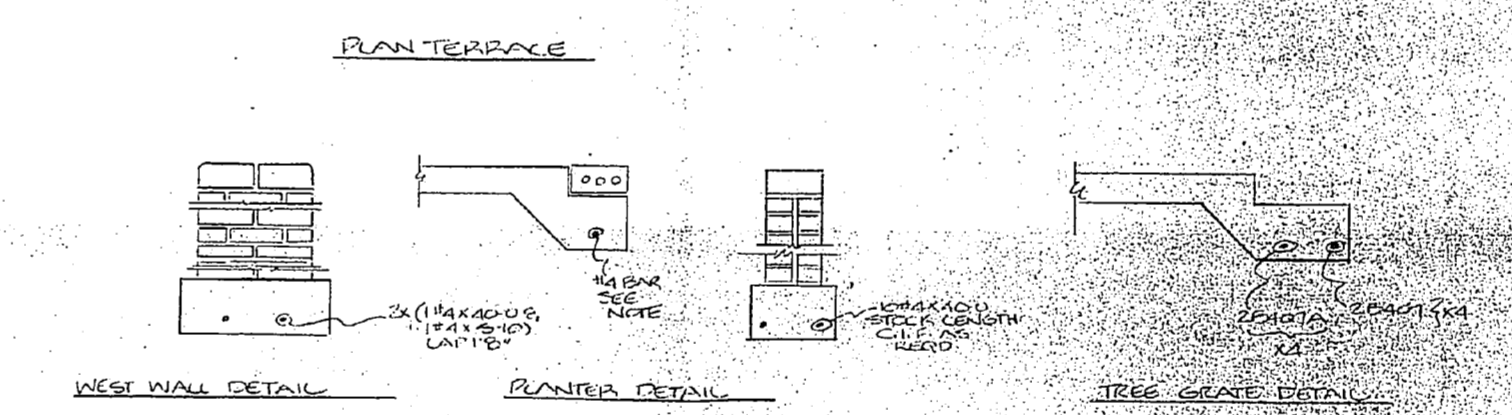
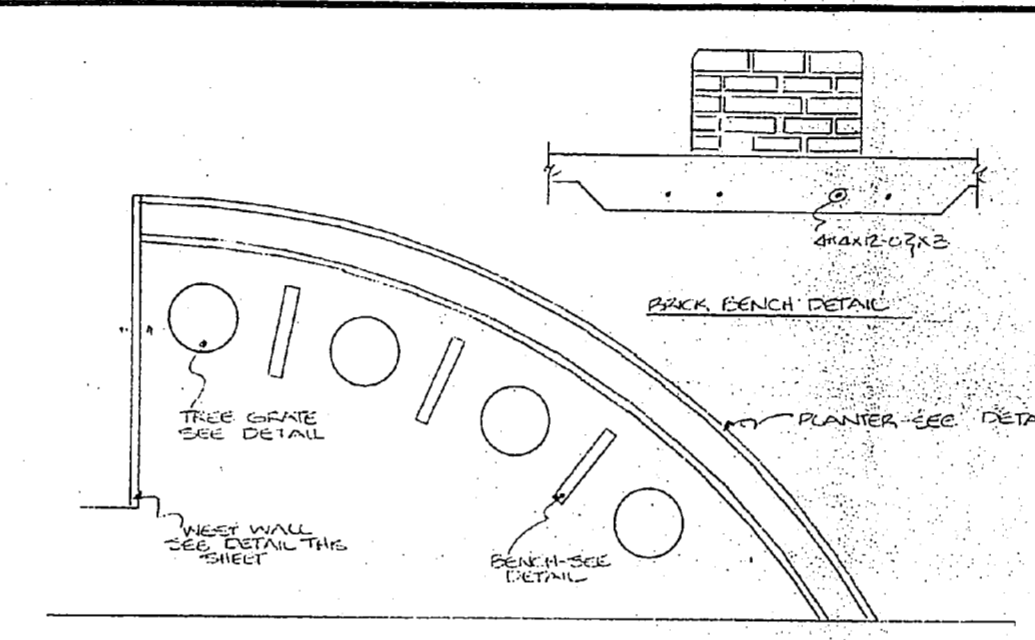
ORACR: 600
PREFIX: E1
BAR LIST: E1

FLUORIDE STEEL CORPORATION
P.O. BOX 28210 RALEIGH, N.C. 27611

CONTRACTOR: TRADER CONCRETE CO.
ARCHT: NAVFAC
ENGR: NAVFAC
DRAWN: [Name] CHECKED: [Name] DATE: [Date] CONTR. NO.: [Number] DWS. NO.: [Number]



HORIZONTAL & VERTICAL WALL REINFORCING			
W. ELEVATION (CONT.)			
MARK	NO.	REINFORCING	NOTE
L14	1	1#5 @ 10'-0"	
L15	2	2#4 IN 24" LAP CAP 20" V.E.P. 1#6 @ 1'-0"	SEE REVISION
L16	3	1#6 LAP 24" @ BOND BEAM 1#6 @ 1'-0" FOR REINFORCING	
L17	1	1#6 @ 3'-0"	
L18	1	1#6 @ 1'-0"	
L19	1	1#6 @ 1'-0"	
L20	1	1#6 @ 1'-0"	
L21	2	1#6 @ 1'-0" 1#6 EA SIDE OF M.O.	
L22	1	1#6 @ 3'-0"	
L23	2	2#4 LAP 24" @ BOND BEAM 1#6 @ 1'-0" FOR REINFORCING	SEE REVISION
L24	1	2#4 @ 4'-0"	
L25	2	2#4 LAP 24" @ BOND BEAM 1#6 @ 1'-0" FOR REINFORCING	SEE REVISION
L26	1	1#6 @ 3'-0"	
L27	1	1#6 @ 1'-0"	
L28	1	2#4 IN 24" LAP CAP 20" V.E.P. 1#6 @ 1'-0"	



ATLANTIC DIVISION
NAVAL FACILITIES ENGINEERING COMMAND
NORFOLK, VIRGINIA 23511

APPROVED AS NOTED
DATE 11/1/63

FOR OFFICER IN CHARGE OF CONSTRUCTION

FOR APPROVAL ONLY

GRADE		RALEIGH DIVISION	
60	60	P. O. BOX 28219	RALEIGH, N. C. 27611
REVISION	DATE	NO.	DATE
1	11/1/63	1	11/1/63
2		2	
3		3	
4		4	
5		5	
6		6	
7		7	
8		8	
9		9	
10		10	

