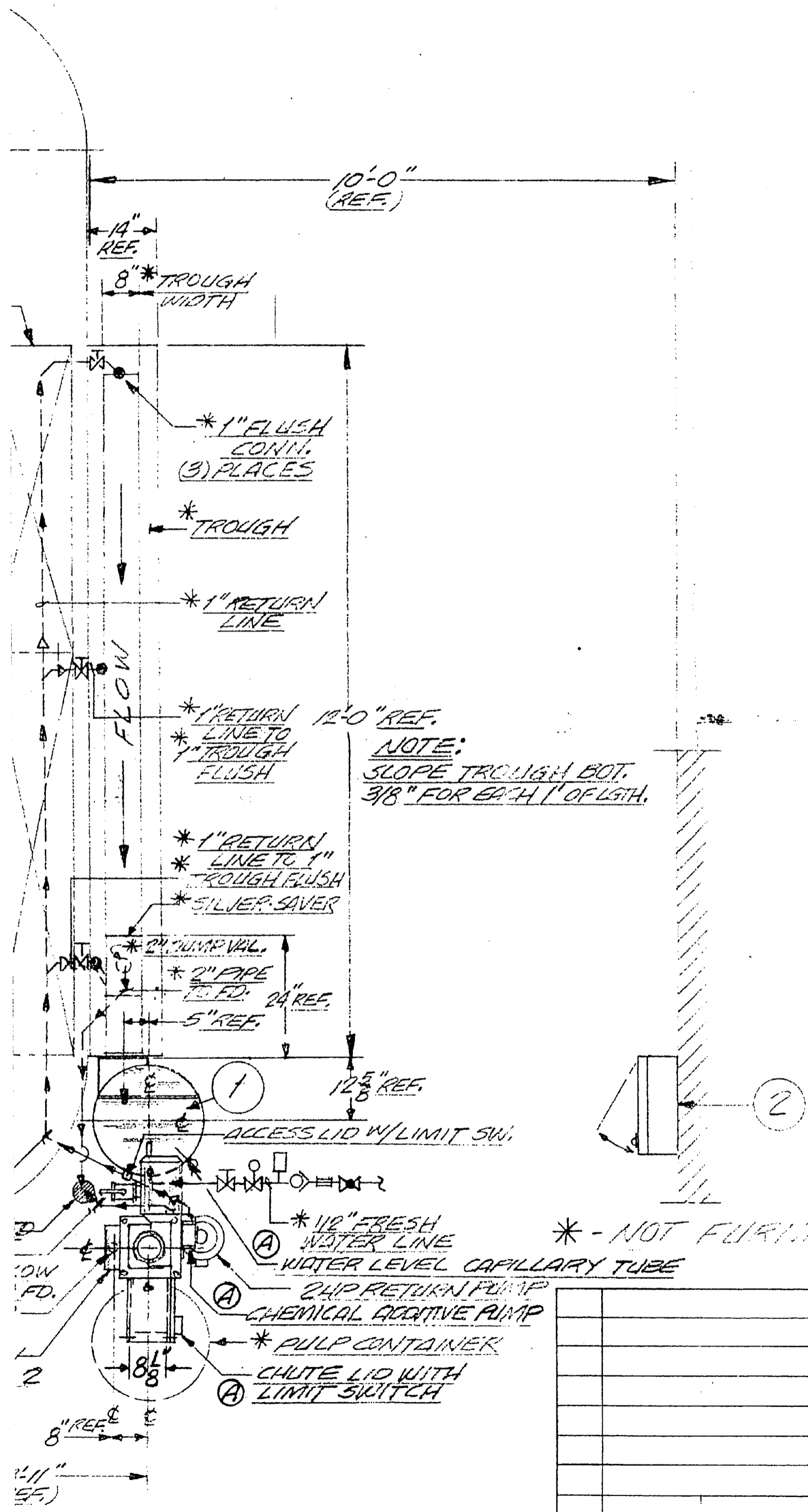


PLAN VIEW OF DISH. *WASTE RM.*  
SCALE: 1/8" = 1'-0"



NOTE:  
SLOPE TROUGH BOT.  
3/8" FOR EACH 1' OF LGTH.

\* - NOT FURNISHED BY THE SOMAT CORPORATION

BILL OF MATERIALS

DRAWING NO. F-2249A

ITEM	QTY.	SER. NO.	EQUIP. DESIGNATION	MOTORS HP
1	1	4502-1	SOMAT SPE-SOAS PULPER WITH HINGED LID ASSEMBLY	3
2	1	4502-6	TROUGH CONVEY. & FLUSH PUMP	1/2
2	1	4502-6	SOM-A-TROL (CS) PANEL	-
EQUIPMENT TOTALS				8 1/2

REFERENCE DWGS.

- SOMAT SPE-SOAS PULPER DWG. A-101403A
- TROUGH CONVEY. LID ASSEMBLY DWG. A-101391A
- \* TROUGH SILVER SAVER DWG. A-101402

VALVE REQUIREMENTS

- SOLENOID VALVE - FRESH WATER LINE
- DRAIN VALVE - ITEM 1
- THROTTLING VALVE - FRESH WATER LINE & RETURN TROUGH LINE
- SHUT-OFF VALVE - FRESH WATER LINE
- SHOCK ARRESTER - FRESH WATER LINE
- FLEXIBLE CONNECTOR - FRESH WTR. LINE
- BACK-FLOW PREVENTER - FRESH WTR. LINE
- PIPE REDUCER - RETURN TROUGH LINE

SEP 9 1981

© SOMAT CORPORATION, 1981  
ALL RIGHTS RESERVED.

**somat.**

WASTE HANDLING SYSTEMS

SOMAT CORPORATION, 1978 ALL RIGHTS RESERVED CHESTNUT ST., POMEROY, PA. 19367

GENERAL ARRANGEMENT OF SOMAT EQUIPMENT

NOTICE  
This is a proprietary design of Somat Corporation. Reproduction, manufacture or use of any assembly, sub-assembly, or part indicated herein or the use of the design of any such assembly, sub-assembly or part is permissible only if expressly authorized in writing by Somat Corporation, Chestnut St., Pomeroy, Pa. 19367.

MATERIAL: \_\_\_\_\_  
SCALE: 1/8" = 1'-0" DATE: 10-8-79  
DRAWN BY: WCS CHECKED BY: \_\_\_\_\_

REV.	CHANGE	BY	DATE
A	ADDED W/LET AT PULPER-CHEMICAL ADDITIVE PUMP & CHUTE LID ASSEMBLY TO ME	WCS	10/8/79

LOCAL REGIONAL MED. CTR. CHARLOTTE, N.C.

DWG. NO. F-2249A

Faint, illegible text on the left side of the page, possibly bleed-through from the reverse side.

Main body of faint, illegible text, possibly bleed-through from the reverse side.

Faint, illegible text on the right side of the page, possibly bleed-through from the reverse side.