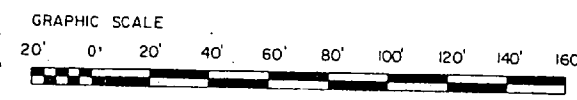
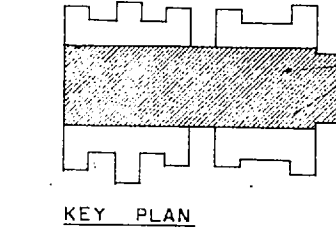


MAINT BN ADMIN
SEE NAVFAC DWG
NO 1293353

FLOOR PLAN - CRANEWAYS
SCALE 1/32" = 1'-0"

FOR EQUIPMENT SCHEDULE SEE NAVFAC
DWG NO 1294506 & 1294507
SEE SPECIAL NOTES DWG 1294494
FOR VEHICLE INSPECTION & CONC WASH
APRON REQUIREMENTS, SEE NAVFAC
DWG NO 1294508



USE DIRECTED AT MARINE CORPS ACTIVITIES
10-11-68

PLUMBING REQUIREMENTS

COLD WATER: (PROBABLE MAXIMUM FLOW RATE IN GPM) 50
NOTE: ABOVE FLOOR RATE DOES NOT INCLUDE REQUIREMENTS FOR FIRE PROTECTION, PROCESS, AND AIR CONDITIONING.
HOT WATER: NONE
STORAGE IN GALLONS (ELECTRIC WATER HEATER): NONE

MECHANICAL REQUIREMENTS

HEATING: (IN MBTU/HR): 60°F - SHOPS
INSIDE DESIGN TEMPERATURE 70°F - OFFICE & TOILETS
OUTSIDE DESIGN TEMPERATURE -5°F +15°F +25°F
8850 7900 7065 6290
AIR CONDITIONING: (TONS OF REFRIGERATION): MAX.
INSIDE DESIGN TEMPERATURE SEE SPECIAL NOTE III NAVFAC DWG. 1294494
OUTSIDE DESIGN TEMPERATURE 95°F FDB - 78°F FWB
0

MAXIMUM AIR CONDITIONING REQUIREMENT TO BE AIR CONDITIONED AND REQUIREMENT CONSTRUCTION CRITERIA MANUAL NO. 4270 IS APPROXIMATE. ACTUAL SPACES SHALL BE BASED ON D.O.D. M.

ELECTRICAL REQUIREMENTS

LIGHTS:

CONNECTED LOAD (KW)	274	
ESTIMATED DEMAND (KW)	274	

POWER:

	WITH AC (MAX. CAP)	WITHOUT AC
CONNECTED LOAD (KW)	556	550
ESTIMATED DEMAND (KW)	412	412

TOTAL:

CONNECTED LOAD (KW)	824	824
ESTIMATED DEMAND (KW)	684	684

MAXIMUM AIR CONDITIONING REQUIREMENT TO BE AIR CONDITIONED AND REQUIREMENTS CONSTRUCTION CRITERIA MANUAL NO. 4270. APPROXIMATE. ACTUAL SPACES SHALL BE BASED ON D.O.D. M.

AREA

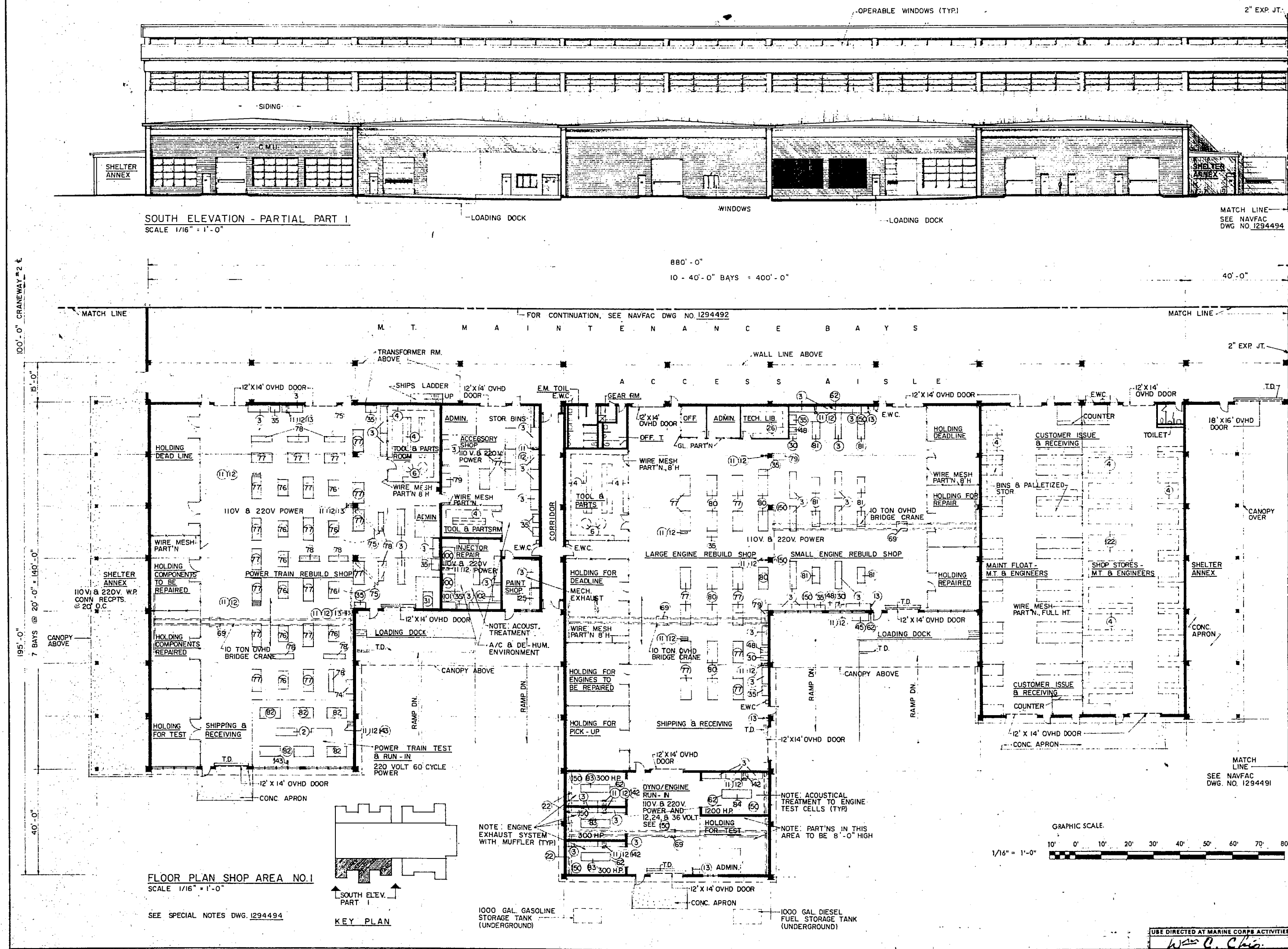
GROSS AREA WITHOUT MECH. EQUIP. RM. (SQ. FT.)	
MECH. EQUIP. ROOM (SQ. FT.)	
GROSS AREA-TOTAL (SQ. FT.) CRANEWAY NO. 1 & 2	220,000

GENERAL NOTES

UTILITIES REQUIREMENTS INDICATED ARE FOR ESTIMATING PURPOSES ONLY.
AUTOMATIC SPRINKLER AND FIRE PROTECTION SHALL BE PROVIDED IN ACCORDANCE WITH CURRENT D.O.D. 4270.11-1 CONSTRUCTION CRITERIA AND NAVFAC DM-8.
MARINE CORPS ACTIVITIES SHALL FOLLOW THE ARRANGEMENT AND FUNCTIONAL LAYOUT INDICATED IN INITIATION OF CONSTRUCTION OBTAINED FROM THE COMMANDANT OF THE MARINE CORPS. ARCHITECTURAL TREATMENT AND MATERIAL MAY VARY WHEN NEEDED TO ACHIEVE COMPATIBILITY WITH LOCAL CONSTRUCTION AND EFFECTIVE USE OF MATERIALS.

T/O M-3248
LITTLE, BISSETT, CARLISLE & WOLFF ARCHITECTS / ENGINEERS / PLANNERS / ENGINEERS
DEPARTMENT OF THE NAVY WASHINGTON, D.C.
NAVAL FACILITIES ENGINEERING COMMAND
DEFINITIVE DRAWING
COMBAT / AUTOMOTIVE / TRACK FIELD MAINTENANCE SHOP (CRANEWAYS) MAINTENANCE BATTALION F.S.R.
NAVFAC DRAWING NO. 1294489
CODE IDENT NO. 80091
DATE 10/11/68
SCALE AS NOTED





PLUMBING REQUIREMENTS

COLD WATER: (PROBABLE MAXIMUM FLOW RATE - GPM) 70

HOT WATER:
STORAGE IN GALLONS (ELECTRIC WATER HEATER): 30

NOTE: ABOVE FLOW RATE DOES NOT INCLUDE REQUIREMENTS FOR FIRE PROTECTION, PROCESS, AND AIR CONDITIONING.
POWER REQUIREMENT FOR ELECTRIC WATER HEATERS (WHERE REQUIRED) IS NOT INCLUDED IN ELECTRICAL REQUIREMENTS.

MECHANICAL REQUIREMENTS

HEATING: (IN MBTU/HR):
INSIDE DESIGN TEMPERATURE 60°F - SHOPS
70°F - OFFICE & TOILETS
OUTSIDE DESIGN TEMPERATURE -5°F -5°F +15°F +25°F

2220 20 1820 1615

AIR CONDITIONING: (TONS OF REFRIGERATION): MAX.
INSIDE DESIGN TEMPERATURE SEE SPECIAL NOTES III NAVFAC DWG. 1294494
OUTSIDE DESIGN TEMPERATURE 95°F FDB - 78°F FWB

1-1/2

MAXIMUM AIR CONDITIONING REQUIREMENTS APPROXIMATE ACTUAL SPACES TO BE AIR CONDITIONED AND REQUIREMENTS SHALL BE BASED ON D.O.D. CONSTRUCTION CRITERIA MANUAL NO. 42-0.1-M.

ELECTRICAL REQUIREMENTS

LIGHTS:
CONNECTED LOAD (KW) 7
ESTIMATED DEMAND (KW) 7

POWER: WITH AC MA. CAP. WITHOUT AC

CONNECTED LOAD (KW)	303	300
ESTIMATED DEMAND (KW)	227	225

TOTAL:
CONNECTED LOAD (KW) 375
ESTIMATED DEMAND (KW) 299

MAXIMUM AIR CONDITIONING REQUIREMENT IS APPROXIMATE ACTUAL SPACES TO BE AIR CONDITIONED AND REQUIREMENTS SHALL BE BASED ON D.O.D. CONSTRUCTION CRITERIA MANUAL NO. 42-0.1-M.

AREA

GROSS AREA WITHOUT MECH. EQUIP. RM. (SQ. FT.)	52,200
MECH. EQUIP. ROOM (SQ. FT.) (TRANSFORMER 1-1)	800
GROSS AREA - TOTAL (SQ. FT.) SHOP AREA NO.	53,000

GENERAL NOTES

UTILITIES REQUIREMENTS INDICATED ARE FOR ESTIMATING PURPOSES ONLY.

AUTOMATIC SPRINKLER AND FIRE PROTECTION SHALL BE PROVIDED IN ACCORDANCE WITH CURRENT D.O.D. 4270-M CONSTRUCTION CRITERIA MANUAL AND NAVFAC DM-8.

MARINE CORPS ACTIVITIES SHALL FOLLOW THE ARRANGEMENT AND FUNCTIONAL LAYOUT INDICATED IN INITIATION OF CONSTRUCTION REQUIREMENTS UNLESS PRIOR AUTHORIZATION FOR CHANGE IS OBTAINED FROM THE COMMANDANT OF THE MARINE CORPS. ARCHITECTURAL TREATMENT AND MATERIAL MAY VARY WHEN NEEDED TO ACHIEVE COMPATIBILITY WITH LOCAL CONSTRUCTION AND EFFECTIVE USE OF MATERIALS.

T/O M - 3248
WASHINGTON, D.C.

DEPARTMENT OF THE NAVY
NAVFACILITIES ENGINEERING COMMAND

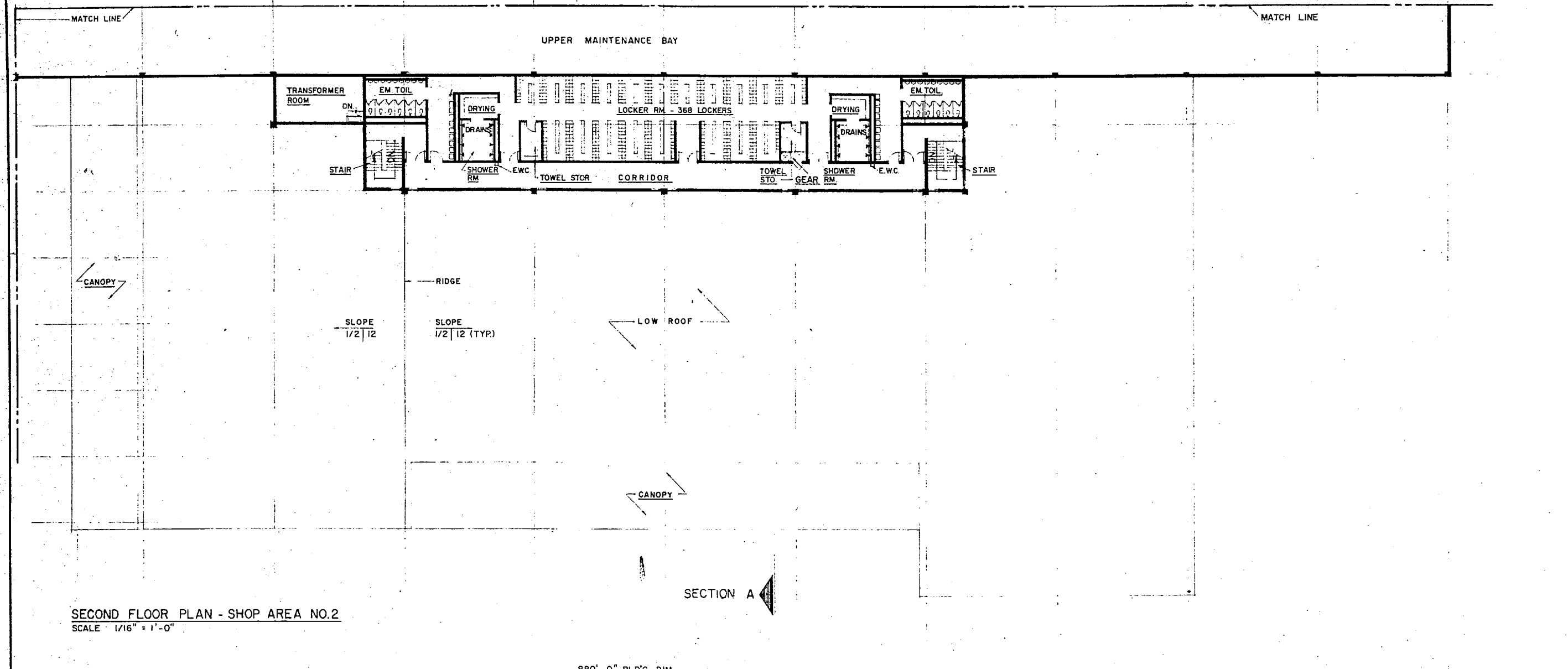
DEFINITIVE DRAWING
COMBAT/AUTOMOTIVE/TRACK
FIELD MAINTENANCE SHOP (NO. 1)
MAINTENANCE BATTALION F.S.R.

APPROVED: [Signature] DATE: 4/10/72
DESIGNED BY: [Signature] DATE: 12/21/70
DRAWN BY: [Signature] DATE: 12/21/70
CHECKED BY: [Signature] DATE: 12/21/70
SCALE AS NOTED

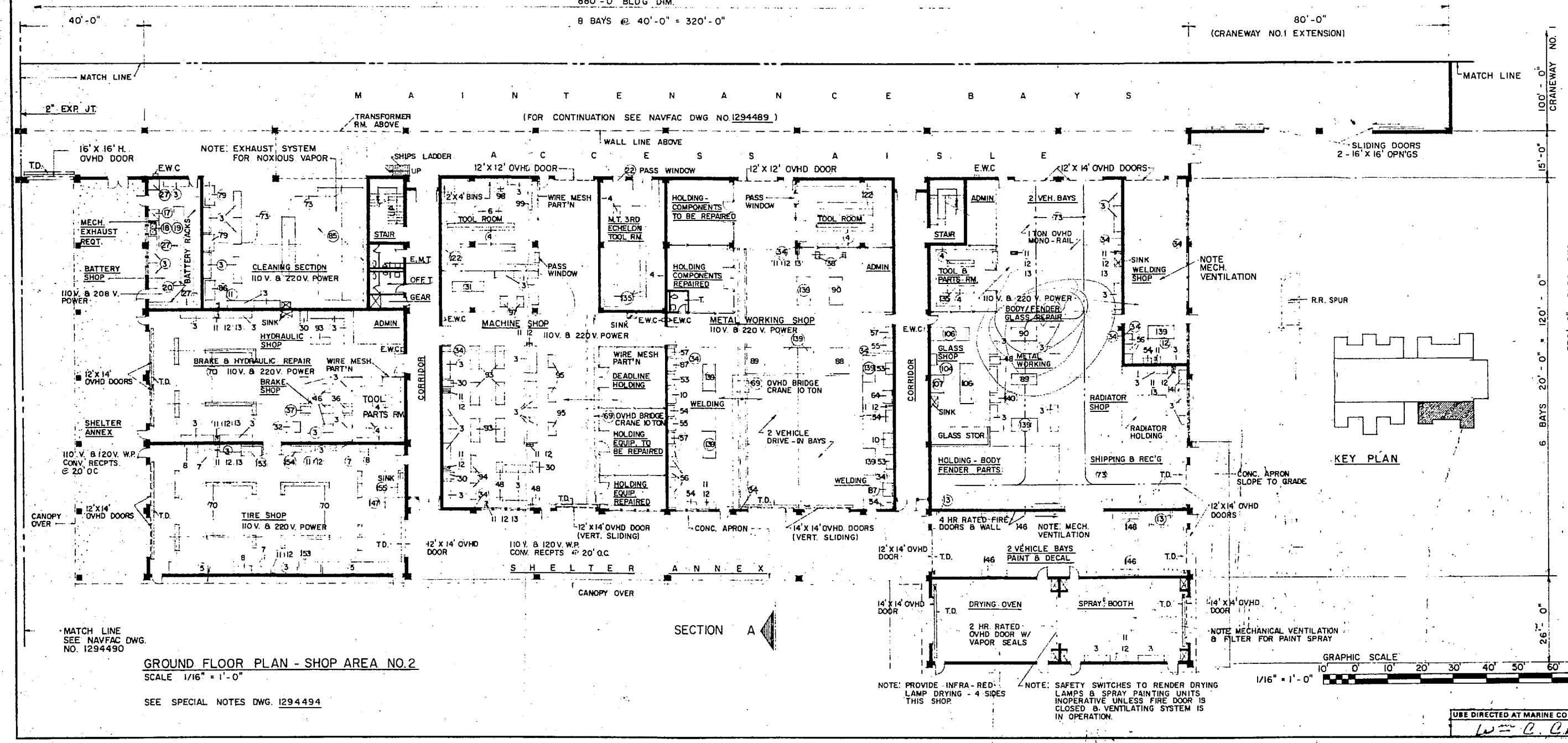
80091 1294490

214 - 53-C2





SECOND FLOOR PLAN - SHOP AREA NO. 2
SCALE 1/16" = 1'-0"



GROUND FLOOR PLAN - SHOP AREA NO. 2
SCALE 1/16" = 1'-0"
SEE SPECIAL NOTES DWG. 1294494

PLUMBING REQUIREMENTS

COLD WATER: (PROBABLE MAXIMUM FLOW RATE IN GPM)	108
HOT WATER:	
STORAGE IN GALLONS (CONVERTORS)	840
HOT WATER RECOVERY (GPH)	668

NOTE: ABOVE FLOW RATE DOES NOT INCLUDE REQUIREMENTS FOR FIRE PROTECTION PROCESS, AND AIR CONDITIONING.

MECHANICAL REQUIREMENTS

HEATING: (IN MBTU/HR):

INSIDE DESIGN TEMPERATURE	-5°F	+5°F	60°F - SHOPS	70°F - OFFICE & TOILETS
OUTSIDE DESIGN TEMPERATURE	1980	805	1640	1460

AIR CONDITIONING: (TONS OF REFRIGERATION): MAX.

INSIDE DESIGN TEMPERATURE	SEE SPECIAL NOTES III, NAVFAC DWG. 1294494
OUTSIDE DESIGN TEMPERATURE	95°F FDB - 78°F FWB
	0

MECHANICAL VENTILATION SHALL BE PROVIDED FOR BATTERY SHOP

MAXIMUM AIR CONDITIONING REQUIREMENT IS APPROXIMATE. ACTUAL SPACES TO BE AIR CONDITIONED AND REQUIREMENTS SHALL BE BASED ON D.O.D. CONSTRUCTION CRITERIA MANUAL NO. 4270.1-M.

ELECTRICAL REQUIREMENTS

LIGHTS:

CONNECTED LOAD (KW)	64
ESTIMATED DEMAND (KW)	64

POWER:

	WITH AC MAX. CAP.	WITHOUT AC
CONNECTED LOAD (KW)	275	275
ESTIMATED DEMAND (KW)	206	206

TOTAL:

CONNECTED LOAD (KW)	339	339
ESTIMATED DEMAND (KW)	270	270

MAXIMUM AIR CONDITIONING REQUIREMENT IS APPROXIMATE. ACTUAL SPACES TO BE AIR CONDITIONED AND REQUIREMENTS SHALL BE BASED ON D.O.D. CONSTRUCTION CRITERIA MANUAL NO. 4270.1-M.

AREA

GROSS AREA WITHOUT MECH. EQUIP. RM. (SQ. FT.)	
MECH. EQUIP. ROOM (SQ. FT.)	
GROSS AREA-TOTAL (SQ. FT.)	47,500

GENERAL NOTES

UTILITIES REQUIREMENTS INDICATED ARE FOR ESTIMATING PURPOSES ONLY.

AUTOMATIC SPRINKLER AND FIRE PROTECTION SHALL BE PROVIDED IN ACCORDANCE WITH CURRENT D.O.D. 427C-1-M CONSTRUCTION CRITERIA MANUAL AND NAVFAC DM-8.

MARINE CORPS ACTIVITIES SHALL FOLLOW THE ARRANGEMENT AND FUNCTIONAL LAYOUT INDICATED IN INITIATION OF CONSTRUCTION REQUIREMENTS UNLESS PRIOR AUTHORIZATION FOR CHANGE IS OBTAINED FROM THE COMMANDANT OF THE MARINE CORPS. ARCHITECTURAL TREATMENT AND MATERIAL MAY VARY WHEN NEEDED TO ACHIEVE COMPATABILITY WITH LOCAL CONSTRUCTION AND EFFECTIVE USE OF MATERIALS.

T/O M. 3248, WASHINGTON, D.C.

DEPARTMENT OF THE NAVY
NAVAL FACILITIES ENGINEERING COMMAND

DEFINITIVE DRAWING
COMBAT/AUTOMOTIVE/TRACK
FIELD MAINTENANCE SHOP (NO. 2)
MAINTENANCE BATTALION F.S.R.

NAVY DRAWING NO. 1294491

80091

SCALE AS NOTED

DATE: 21 DEC 1970

BY: [Signature]

FOR CONSTRUCTION: [Signature]

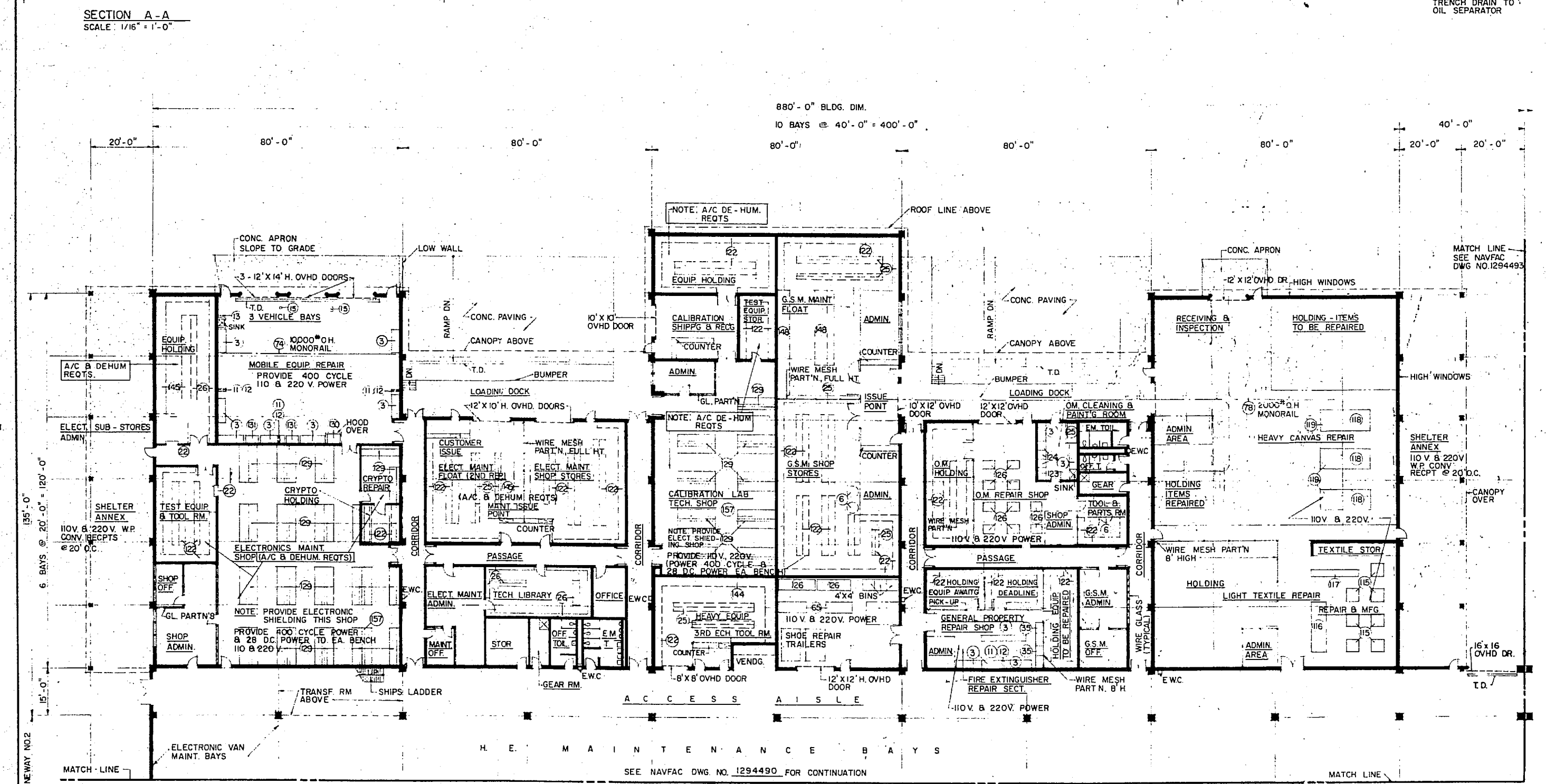
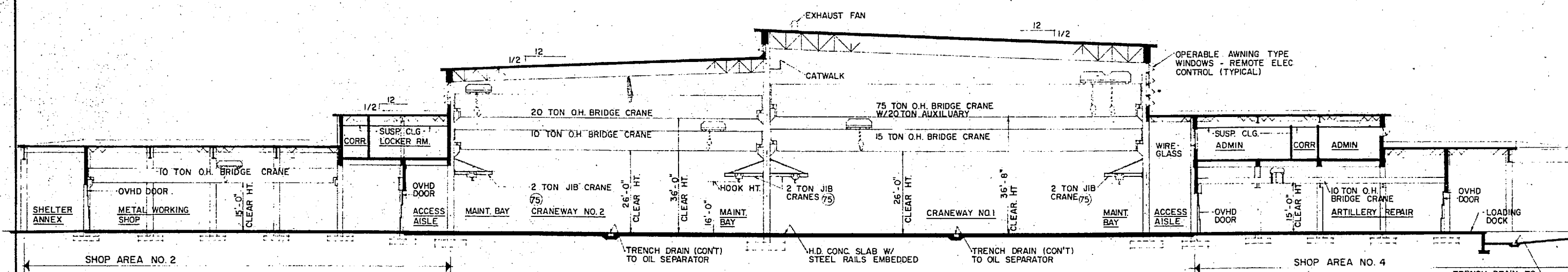
GRAPHIC SCALE: 0 10 20 30 40 50 60 70 80

1/16" = 1'-0"

NOTE: PROVIDE INFRA-RED LAMP DRYING - 4 SIDES THIS SHOP.

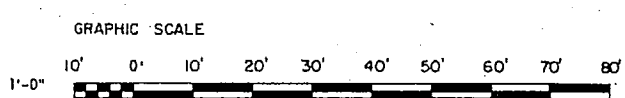
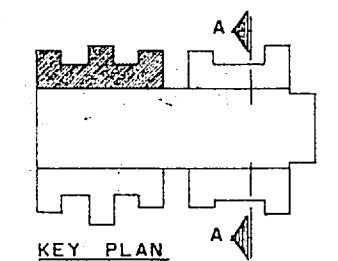
NOTE: SAFETY SWITCHES TO RENDER DRYING LAMPS & SPRAY PAINTING UNITS INOPERATIVE UNLESS FIRE DOOR IS CLOSED & VENTILATING SYSTEM IS IN OPERATION.

USE DIRECTED AT MARINE CORPS ACTIVITIES



FLOOR PLAN - SHOP AREA NO. 3
SCALE 1/16" = 1'-0"

NOTE: CRYPTO REPAIR & HOLDING AREAS SHALL BE RED & BLACK SECURITY, IN ACCORDANCE WITH CRITERIA
SEE SPECIAL NOTES DWG 1294494



PLUMBING REQUIREMENTS

COLD WATER: (PROBABLE MAXIMUM FLOW RATE IN GPM)	77
HOT WATER:	40
STORAGE IN GALLONS (ELECTRIC WATER HEATER)	40

NOTE: ABOVE FLOW RATE DOES NOT INCLUDE REQUIREMENTS FOR FIRE PROTECTION, PROCESS, AND AIR CONDITIONING.
POWER REQUIREMENT FOR ELECTRIC WATER HEATERS (WHERE REQUIRED) IS NOT INCLUDED IN ELECTRICAL REQUIREMENTS.

MECHANICAL REQUIREMENTS

HEATING: (IN MBTU/HR):	60°F - SHOPS
INSIDE DESIGN TEMPERATURE	70°F - OFFICE AND TOILETS
OUTSIDE DESIGN TEMPERATURE	+5°F +15°F +25°F
	1990 1825 1650 1470

AIR CONDITIONING: (TONS OF REFRIGERATION): MAX.
INSIDE DESIGN TEMPERATURE SEE SPECIAL NOTES III NAVFAC DWG 1294494
OUTSIDE DESIGN TEMPERATURE 95°F FDB - 78°F FWB

MAXIMUM AIR CONDITIONING REQUIREMENT IS APPROXIMATE ACTUAL SPACES TO BE AIR CONDITIONED AND REQUIREMENTS SHALL BE BASED ON D.O.D. CONSTRUCTION CRITERIA MANUAL NO. 4270.1-M.

ELECTRICAL REQUIREMENTS

LIGHTS:	
CONNECTED LOAD (KW)	66
ESTIMATED DEMAND (KW)	66
POWER:	
	WITH AC MAX. CAP. WITHOUT AC
CONNECTED LOAD (KW)	167 100
ESTIMATED DEMAND (KW)	125 75
TOTAL:	
CONNECTED LOAD (KW)	233 166
ESTIMATED DEMAND (KW)	191 141

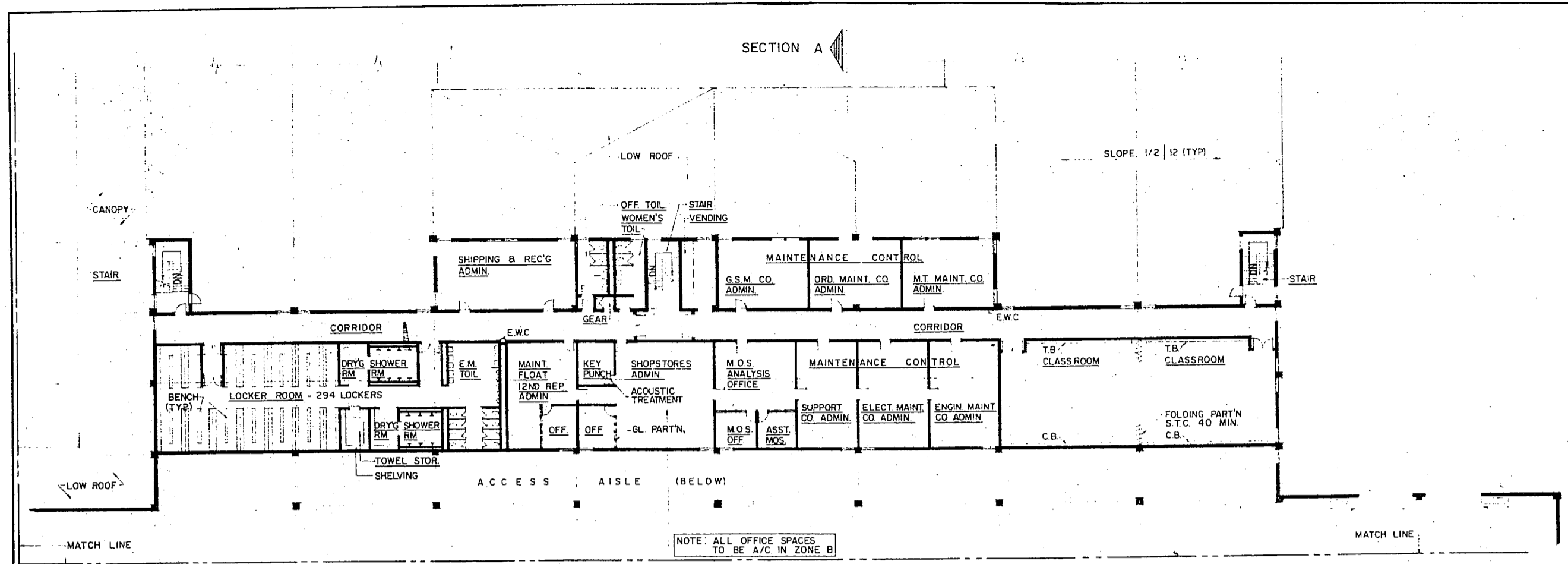
MAXIMUM AIR CONDITIONING REQUIREMENT IS APPROXIMATE ACTUAL SPACES TO BE AIR CONDITIONED AND REQUIREMENTS SHALL BE BASED ON D.O.D. CONSTRUCTION CRITERIA MANUAL NO. 4270.1-M.

GENERAL NOTES

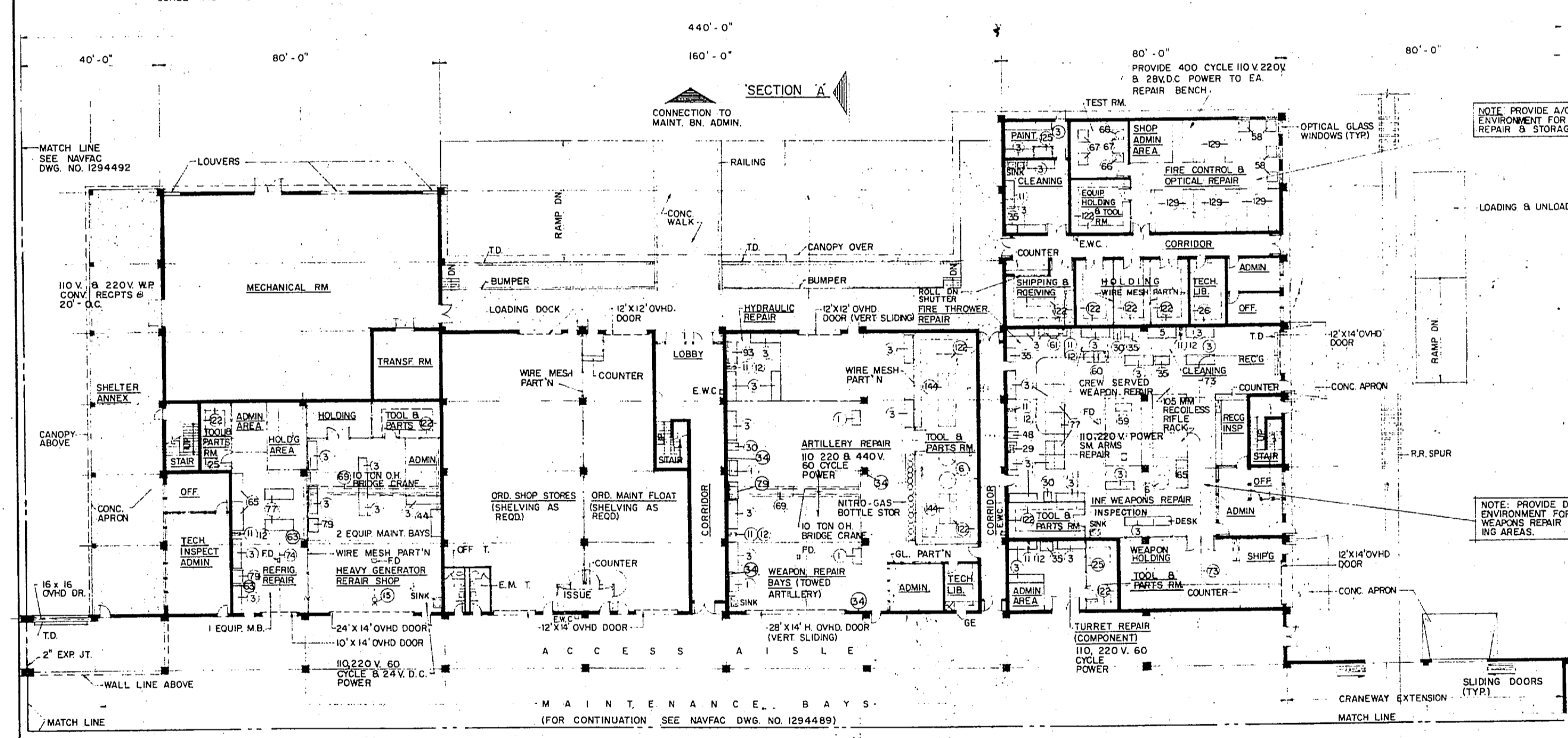
UTILITIES REQUIREMENTS INDICATED ARE FOR ESTIMATING PURPOSES ONLY.
AUTOMATIC SPRINKLER AND FIRE PROTECTION SHALL BE PROVIDED IN ACCORDANCE WITH CURRENT D.O.D. 4270.1-M CONSTRUCTION CRITERIA MANUAL AND NAVFAC DWG-8.
MARINE CORPS ACTIVITIES SHALL FOLLOW THE ARRANGEMENT AND FUNCTIONAL LAYOUT INDICATED IN INITIATION OF CONSTRUCTION REQUIREMENTS UNLESS PRIOR AUTHORIZATION FOR CHANGE IS OBTAINED FROM THE COMMANDANT OF THE MARINE CORPS. ARCHITECTURAL TREATMENT AND MATERIAL MAY VARY WHEN NEEDED TO ACHIEVE COMPATIBILITY WITH LOCAL CONSTRUCTION AND EFFECTIVE USE OF MATERIALS.

T/O M - 3248
DEPARTMENT OF THE NAVY WASHINGTON, D. C.
NAVAL FACILITIES ENGINEERING COMMAND
DEFINITIVE DRAWING
GENERAL S PLY/ELECTRONICS & COMM. FIELD MAINTENANCE SHOP (NO.3) MAINTENANCE BATTALION F. S. R.
NAVFAC DRAWING NO. 1294492
CODE SHEET NO. 80091
DATE 21 DEC 1970
SCALE AS NOTED
214-53-C4/217-30/218-80



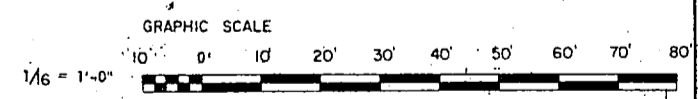
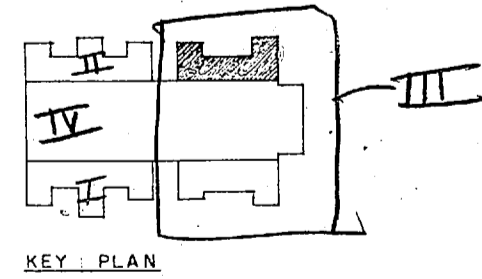


SECOND FLOOR PLAN - SHOP AREA NO.4
SCALE 1/16" = 1'-0"



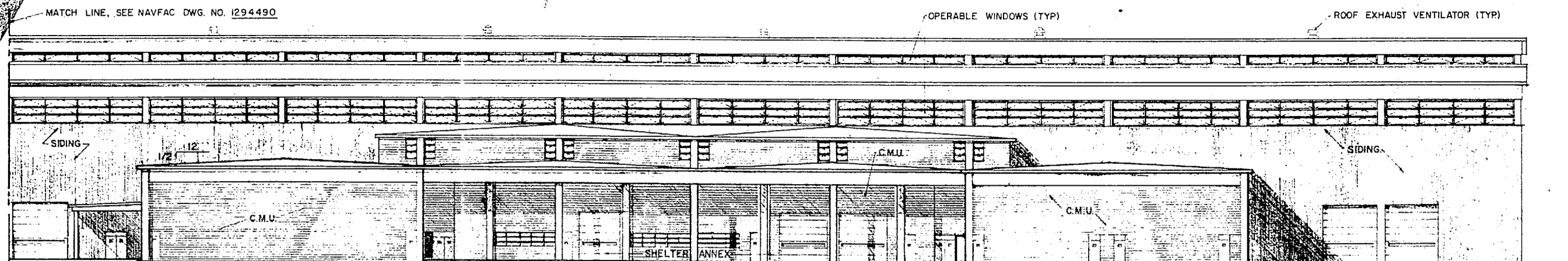
GROUND FLOOR PLAN - SHOP AREA NO. 4
SCALE 1/16" = 1'-0"

- NOTES:
1. PROVIDE 2 TEST FIRE PITS FOR SMALL ARMS TESTING, ADJACENT TO MAINT. FACILITY.
 2. DRAIN ALL TRENCH DRAINS TO AN OIL SEPARATOR.
 3. SEE SPECIAL NOTES DWG. 1294494.

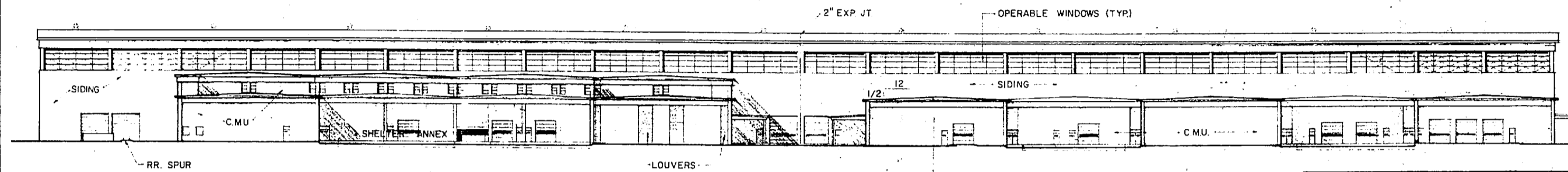


PLUMBING REQUIREMENTS		
COLD WATER: (PROBABLE MAXIMUM FLOW RATE IN GPM)		100
HOT WATER:		
STORAGE IN GALLONS (CONVERTORS)		755
HOT WATER RECOVERY (GPH)		580
NOTE: ABOVE FLOW RATE DOES NOT INCLUDE REQUIREMENTS FOR FIRE PROTECTION, PROCESS, AND AIR CONDITIONING.		
MECHANICAL REQUIREMENTS		
HEATING: (IN MBTU/HR):		
INSIDE DESIGN TEMPERATURE	60° F - SHOPS	
OUTSIDE DESIGN TEMPERATURE	70° F - OFFICE & TOILETS	
	-5° F	+1° F
	-15° F	+25° F
	2220	2000 1860 1680
AIR CONDITIONING: (TONS OF REFRIGERATION): MAX.		
INSIDE DESIGN TEMPERATURE	SEE SPECIAL NOTES III NAVFAC DWG. 1294494	
OUTSIDE DESIGN TEMPERATURE	95° FDB - 78° FWB	
		82
MAXIMUM AIR CONDITIONING REQUIREMENT IS APPROXIMATE. ACTUAL SPACES TO BE AIR CONDITIONED AND REQUIREMENTS SHALL BE BASED ON D.O.D. CONSTRUCTION CRITERIA MANUAL NO. 4270 I-M.		
ELECTRICAL REQUIREMENTS		
LIGHTS:		
CONNECTED LOAD (KW)		66
ESTIMATED DEMAND (KW)		66
POWER:		
	WITH AC MAX CAP	WITHOUT AC
CONNECTED LOAD (KW)	261	130
ESTIMATED DEMAND (KW)	136	58
TOTAL:		
CONNECTED LOAD (KW)	327	196
ESTIMATED DEMAND (KW)	262	164
MAXIMUM AIR CONDITIONING REQUIREMENT IS APPROXIMATE. ACTUAL SPACES TO BE AIR CONDITIONED AND REQUIREMENTS SHALL BE BASED ON D.O.D. CONSTRUCTION CRITERIA MANUAL NO. 4270 I-M.		
AREA		
GROSS AREA WITHOUT MECH. EQUIP. RM. (SQ. FT.)		48,000
MECH. EQUIP. ROOM (SQ. FT.)		4,800
GROSS AREA-TOTAL (SQ. FT.)		52,800
GENERAL NOTES		
UTILITIES REQUIREMENTS INDICATED ARE FOR ESTIMATING PURPOSES ONLY.		
AUTOMATIC SPRINKLER AND FIRE PROTECTION SHALL BE PROVIDED IN ACCORDANCE WITH CURRENT D.O.D. CONSTRUCTION CRITERIA MANUAL NO. 4270 I-M, AND NAVFAC DM-8.		
MARINE CORPS ACTIVITIES SHALL FOLLOW THE ARRANGEMENT AND FUNCTIONAL LAYOUT INDICATED IN INITIATION OF CONSTRUCTION REQUIREMENTS UNLESS PRIOR AUTHORIZATION FOR CHANGE IS OBTAINED FROM THE COMMANDANT OF THE MARINE CORPS. ARCHITECTURAL TREATMENT AND MATERIAL MAY VARY WHEN NECESSARY TO ACHIEVE COMPATIBILITY WITH LOCAL CONSTRUCTION AND EFFECTIVE USE OF MATERIALS.		
		T/O M - 3248
LYLES, BISSSETT, CARLISLE & WOLFF ARCHITECTS / ENGINEERS / PLUMBERS / ELECTRICIANS / MECHANICAL ENGINEERS		DEPARTMENT OF THE NAVY WASHINGTON, D.C.
NAVAL FACILITIES ENGINEERING COMMAND		
DEFINITIVE DRAWING		
ORDNANCE FIELD MAINTENANCE SHOP (NG 4) MAINTENANCE BATTALION F.S.R.		
APPROVED:	DATE:	NAVFAC DRAWING NO. 1294493
OFFICE IN CHARGE:	SCALE AS NOTED:	
FOR COMMANDER NAVFAC		
214-53-C5 & 215-60-B		

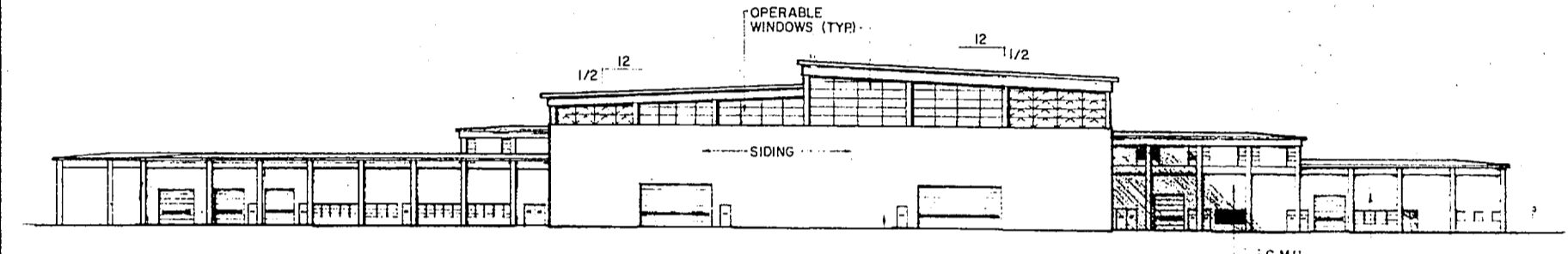




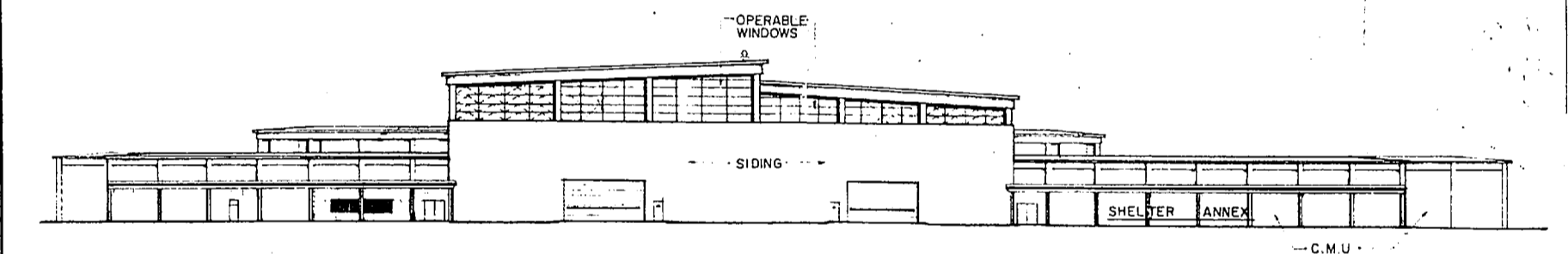
SOUTH ELEVATION PART - 2
SCALE 1/16" = 1'-0"



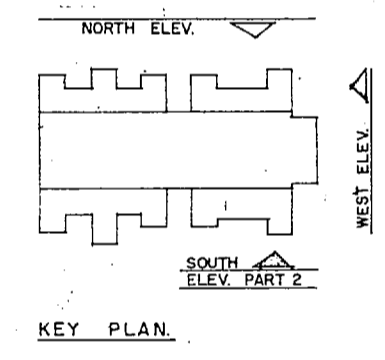
NORTH ELEVATION
SCALE 1/32" = 1'-0"



EAST ELEVATION
SCALE 1/32" = 1'-0"



WEST ELEVATION
SCALE 1/32" = 1'-0"



KEY PLAN

SUMMARY OF UTILITIES

PLUMBING NO DIVERSITY - EXCEPT ON COLD WATER	
COLD WATER - (PROBABLE MAX. FLOW RATE IN GPM)	250
HOT WATER (SEE INDIVIDUAL DRAWINGS)	

MECHANICAL

HEATING (MBTU/HR):	60°F SHOPS
INSIDE DESIGN TEMPERATURE	70°F OFFICE & TOILETS
OUTSIDE DESIGN TEMPERATURE	-5°F +5°F +15°F +25°F
	17260 15670 14035 12515

AIR CONDITIONING: TONS OF REFRIGERATION - MAX.	
INSIDE DESIGN TEMPERATURE - SEE SPECIAL NOTES III THIS DRAWING.	
OUTSIDE DESIGN TEMPERATURE	95°F DB 78°F WB
	123 1/2

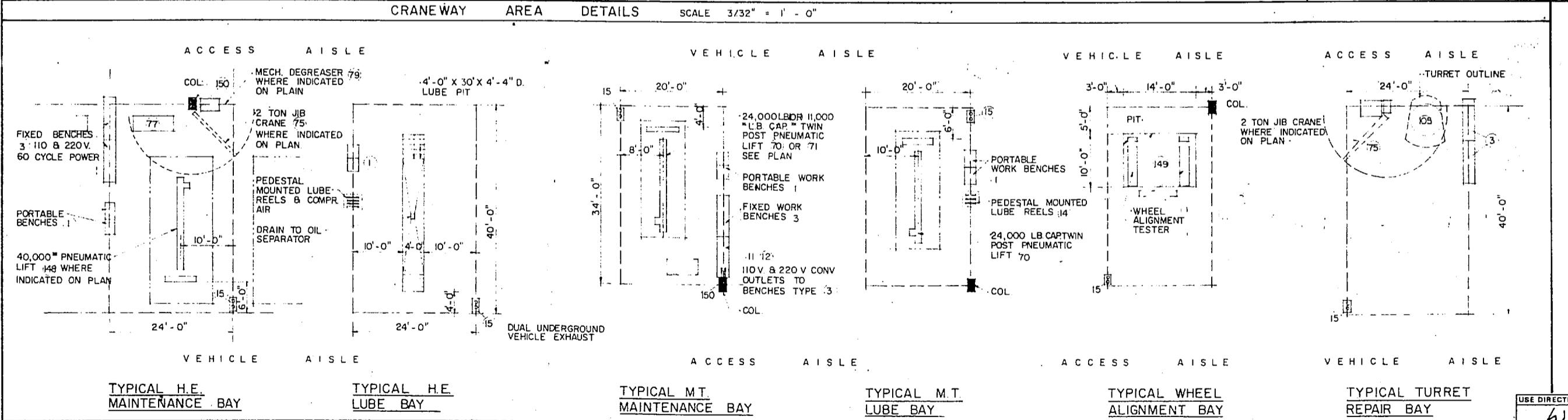
ELECTRICAL

LIGHTS		
CONNECTED LOAD (KW)	542	
ESTIMATED DEMAND (KW)	542	

POWER	WITH A.C. MAX. CAP.	WITHOUT A.C.
CONNECTED LOAD (KW)	1508	1355
ESTIMATED DEMAND (KW)	1128	1016

TOTAL		
CONNECTED LOAD (KW)	2050	1897
ESTIMATED DEMAND (KW)	1670	1558

GRAPHIC SCALES	
1/32" = 1'-0"	0 20 40 60 80 100 120 140 160
1/16" = 1'-0"	0 10 20 30 40 50 60 70 80
3/32" = 1'-0"	0 10 20 30 40 50



SPECIAL NOTES

- DESIGN GUIDES**
- I ARCHITECTURAL**
- UNLESS OTHERWISE NOTED, ALL SUPPORT SHOP AND OFFICE WINDOW AND DOOR LOCATIONS ARE APPROXIMATE AND SERVE AS A DESIGN GUIDE FOR PLACEMENT.
- SUBJECT TO LOCAL CLIMATIC CONDITIONS WINDOWS AND MECHANICAL VENTILATION SHALL BE SIZED TO PERMIT ADEQUATE VENTILATION IN CONFORMANCE WITH THE RECOMMENDATIONS OF THE ANNUAL GUIDE OF THE AMERICAN SOCIETY OF HEATING, REFRIGERATION AND AIR CONDITIONING ENGINEERS.
- GLASS AREA OF WINDOWS IN WORK AREAS SHALL BE IN ACCORDANCE WITH THE LATEST U.S.A.S.I. STANDARD A 1.
- THE CRANEWAY SHALL HAVE CONTINUOUS OPERABLE CLEARSTORY WINDOWS WITH REMOTE ELECTRICAL CONTROL.
- SIDING MATERIAL OF THE CRANEWAY WALLS SHALL BE A RIBBED INSULATED METAL SIDING ON STEEL GIRTS WITH A "U" VALUE OF .13 BTU/HR/50 FT²/F³ IN STILL AIR.
- II ELECTRICAL**
- A** AN ELECTRICAL DISTRIBUTION SYSTEM WITH A MAXIMUM OF 440 VOLTS 60 CYCLE ELECTRICAL SERVICE WITH DISTRIBUTION PANELS FOR DISTRIBUTION OF 110 V, 220 V, AND 440 VOLTAGE REQUIREMENTS.
- ELECTRICAL OUTLETS TO SERVE ITEMS OF EQUIPMENT LISTED IN THE EQUIPMENT SCHEDULE SHALL BE LOCATED IN ACCORDANCE WITH THE EQUIPMENT LOCATIONS SHOWN ON THE PLANS.
- ADDITIONAL CONVENIENCE OUTLETS SHALL BE LOCATED IN THE SHOP AREAS TO SERVE ITEMS OF MISCELLANEOUS BENCH MOUNTED TOOLS PECULIAR TO THE TABLE OF EQUIPMENT FOR THE MARINE CORPS UNITS ASSIGNED.
- B** SPECIAL ELECTRICAL POWER REQUIREMENTS, SUCH AS OUTLETS FOR PORTABLE ARC WELDING EQUIPMENT, ENGINE STARTING OUTLETS (6, 12 & 24 VOLT) IN THE ENGINE RUN-IN/DYNAMOMETER SHOP AND MAINTENANCE BAYS OF THE CRANEWAYS SHALL BE PROVIDED (SEE FLOOR PLANS AND EQUIPMENT SCHEDULES).
- C** ELECTRONIC MAINTENANCE AND CALIBRATION SHOPS REQUIRE BENCH MOUNTED CONVENIENCE OUTLETS FOR 400 VOLT, 110, 220 AND 28 VOLT D.C. WITH 10 OHM GROUNDING RADIO FREQUENCY SHIELDING SHALL BE PROVIDED IN THESE ELECTRONIC SHOP AREAS.
- THE OPTICAL AND FIRE CONTROL MAINTENANCE SHOPS REQUIRE BENCH MOUNTED CONVENIENCE OUTLETS FOR 400 VOLT, 110, 220 VOLT AND 28 VOLT D.C. POWER.
- EXTERIOR ANNEX AREAS REQUIRE 110 AND 220 VOLT WATERPROOF CONVENIENCE OUTLETS LOCATED APPROXIMATELY 20 FEET ON CENTERS TO SERVE SHOP SUPPORT VANS AND POWER TOOLS.
- D** LIGHTING LOW BAY WORK AREAS SHALL HAVE FLUORESCENT TYPE LIGHTING WITH SUPPLEMENT LUMINAIRE LIGHTING AT CRITICAL AREAS.
- HIGH BAY WORK AREAS SHALL HAVE FLUORESCENT AND/OR MERCURY VAPOR LIGHTING IN CRITICAL AREAS.
- NON-CRITICAL AND SERVICE AREAS, SUCH AS MECHANICAL ROOM, CORRIDORS, TOILETS, STORAGE AREAS, LOCKER ROOMS, ETC. SHALL HAVE INCANDESCENT LIGHTING.
- ALL ILLUMINATION SHALL BE IN ACCORDANCE WITH "RECOMMENDED LEVELS OF ILLUMINATION" ILLUMINATING ENGINEERING SOCIETY.
- III AIR CONDITIONING AND HUMIDITY CONTROL** IS REQUIRED IN THE FOLLOWING AREAS:
- A** ELECTRONIC MAINTENANCE AND EQUIPMENT HOLDING AREAS 75° TO 80°F, RELATIVE HUMIDITY 40% TO 50%.
- B** OPTICAL AND FIRE CONTROL MAINTENANCE SHOPS AND EQUIPMENT HOLDING AREAS, 70° TO 72°F, RELATIVE HUMIDITY 40% MAX. WITH POSITIVE PRESSURE FOR DUST FREE ATMOSPHERE.
- C** CALIBRATION MAINT. MECH: 68°-72° ELEV. B. INJECTOR REPAIR, 70° TO 74°F, RELATIVE HUMIDITY 40% TO 50%.
- D** OFFICE MACHINE REPAIR SHOP AND EQUIPMENT HOLDING 75° TO 80°F, RELATIVE HUMIDITY 40% TO 50%.
- E** ADMINISTRATIVE OFFICES ON THE 2ND FLOOR OF SHOP AREA NO. 4, 80°DB.
- F** HUMIDITY CONTROL IS REQUIRED FOR THE FOLLOWING AREAS:
- 1) SMALL ARMS MAINTENANCE AND HOLDING AREAS - 40% TO 50% RH.
- IV UNDERGROUND VEHICLE EXHAUST SYSTEM** SHALL BE PROVIDED IN CRANEWAY MAINTENANCE BAYS, HEAVY GENERATOR REPAIR AND ELECTRONIC MOBILE EQUIPMENT REPAIR BAYS.
- A SPECIAL SEPARATE ENGINE EXHAUST SYSTEM WITH MUFFLER SHALL BE PROVIDED FOR THE DYNAMOMETER ENGINE RUN-IN FACILITY.
- V COMPRESSED AIR SYSTEM 150 P.S.I.** WITH WATER SEPARATOR, PRESSURE REGULATING VALVES AND BIBS SHALL BE LOCATED IN ALTERNATE BAYS OF THE CRANEWAYS AND IN ALL MAINTENANCE SHOPS.
- VI HOT AND COLD WATER** SHALL BE PROVIDED TO ALL MAINTENANCE SHOPS, TOILETS, SHOWER ROOMS, GEAR ROOMS AND CRANEWAYS.
- COLD WATER HOSE BIBS SHALL BE PROVIDED AT BUILDING EXTERIOR AND LOCATED AT MAXIMUM SPACING OF 100 FEET.
- COLD WATER HOSE BIBS SHALL BE LOCATED AT OUTSIDE WASH APRONS, 2 PER VEHICLE APRON, AND RECESSED BELOW THE SURFACE. A SUB-SURFACE HOSE STORAGE BIN WITH COVER AND DRAIN SHALL BE PROVIDED ADJACENT TO WASH APRONS.
- VII STEAM** LIVE STEAM SHALL BE PROVIDED TO THE CLEANING SECTION EQUIPMENT AND TO OUTSIDE VEHICLE WASH APRONS, 2 BIBS RECESSED BELOW THE SURFACE. STEAM PRESSURE REQUIREMENT IS 150 P.S.I.

T/O M-3248

DEPARTMENT OF THE NAVY WASHINGTON, D. C.

NAVAL FACILITIES ENGINEERING COMMAND

DEFINITIVE DRAWING

COMBAT/AUTOMOTIVE / TRACK FIELD MAINTENANCE SHOP (ELEV.) MAINTENANCE BATTALION F. S. R.

NAVAC DRAWING NO. 1294494

OFFICE IN CHARGE: [Signature] DATE: [Date]

SCALE AS NOTED

214-53-C6

