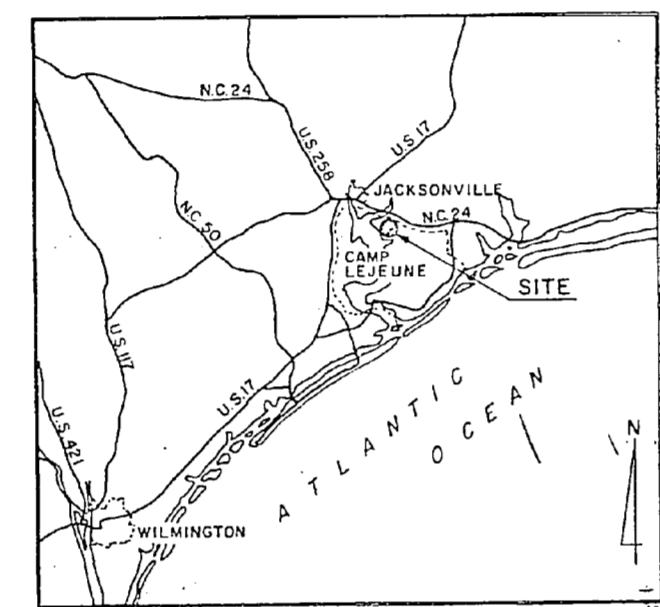
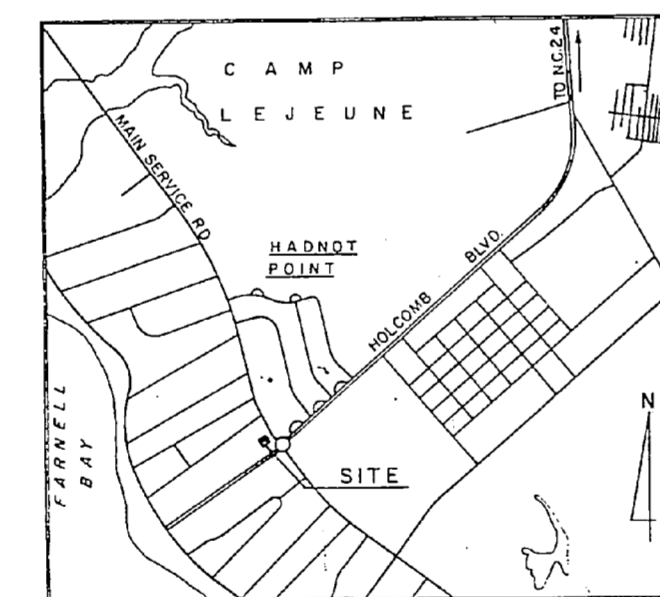


REPLACE WATER SOFTENERS AND ASSOCIATED PIPING - BUILDING 20 MARINE CORPS BASE CAMP LEJEUNE, N. C.

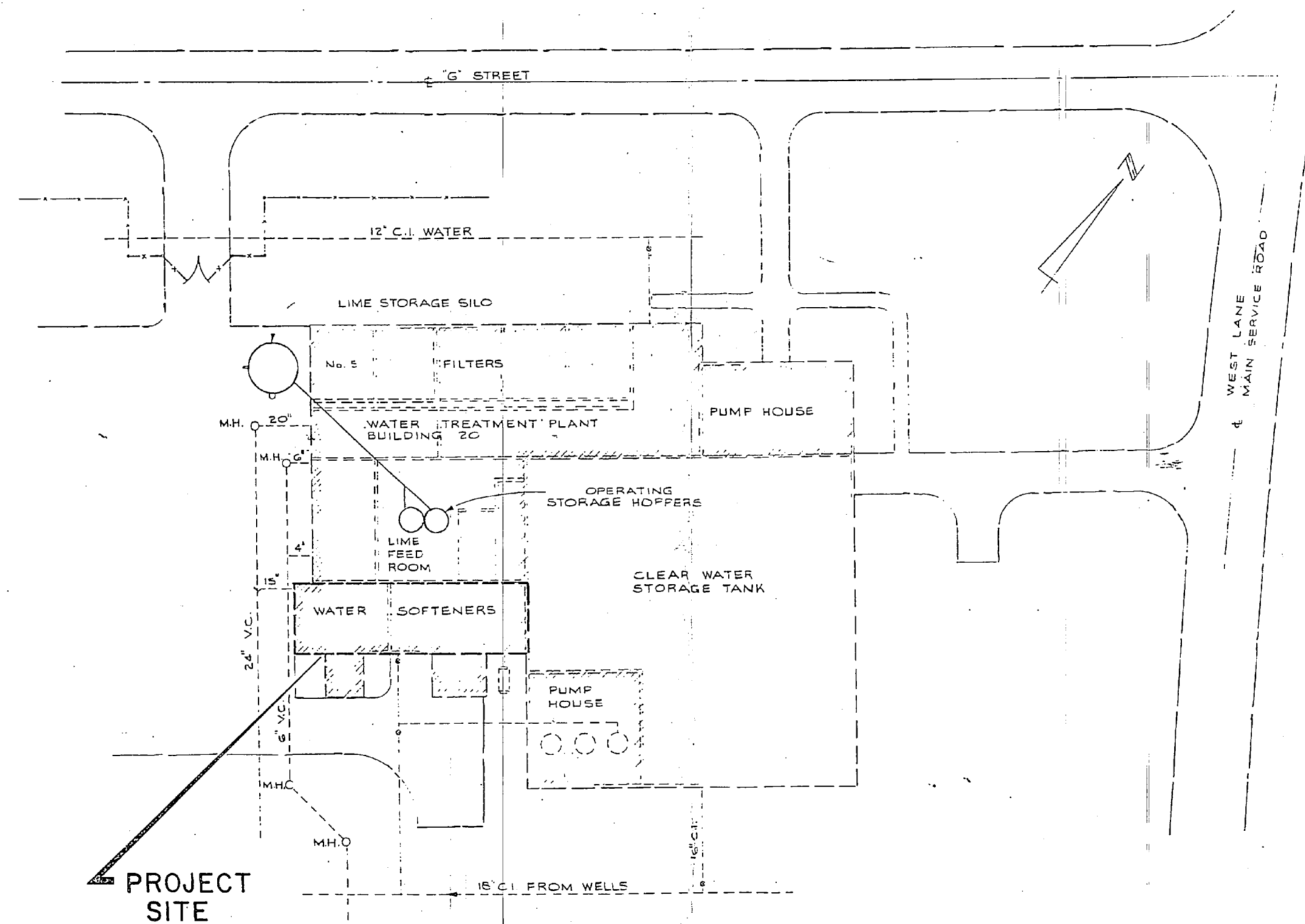
REVISIONS		
NO.	DESCRIPTION	DATE



VICINITY MAP
SCALE: 1" = 13 MILES ±



LOCATION MAP
SCALE: 1" = 2000'



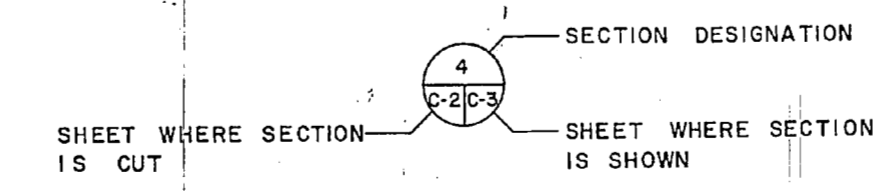
SITE PLAN
SCALE: 1" = 20'

GENERAL NOTES

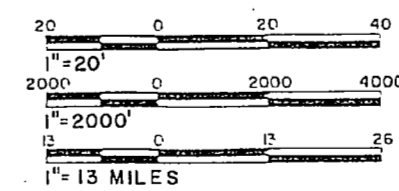
1. WORK ON ONE SOFTENER AND ITS ASSOCIATED PIPING AT A TIME. WORK ON THE SECOND SOFTENER WHEN THE FIRST IS OPERATIONAL.
2. FIELD PAINT METAL SURFACES IN ACCORDANCE WITH SPECIFICATIONS.

LEGEND (SHEETS C-2 THRU C-4)

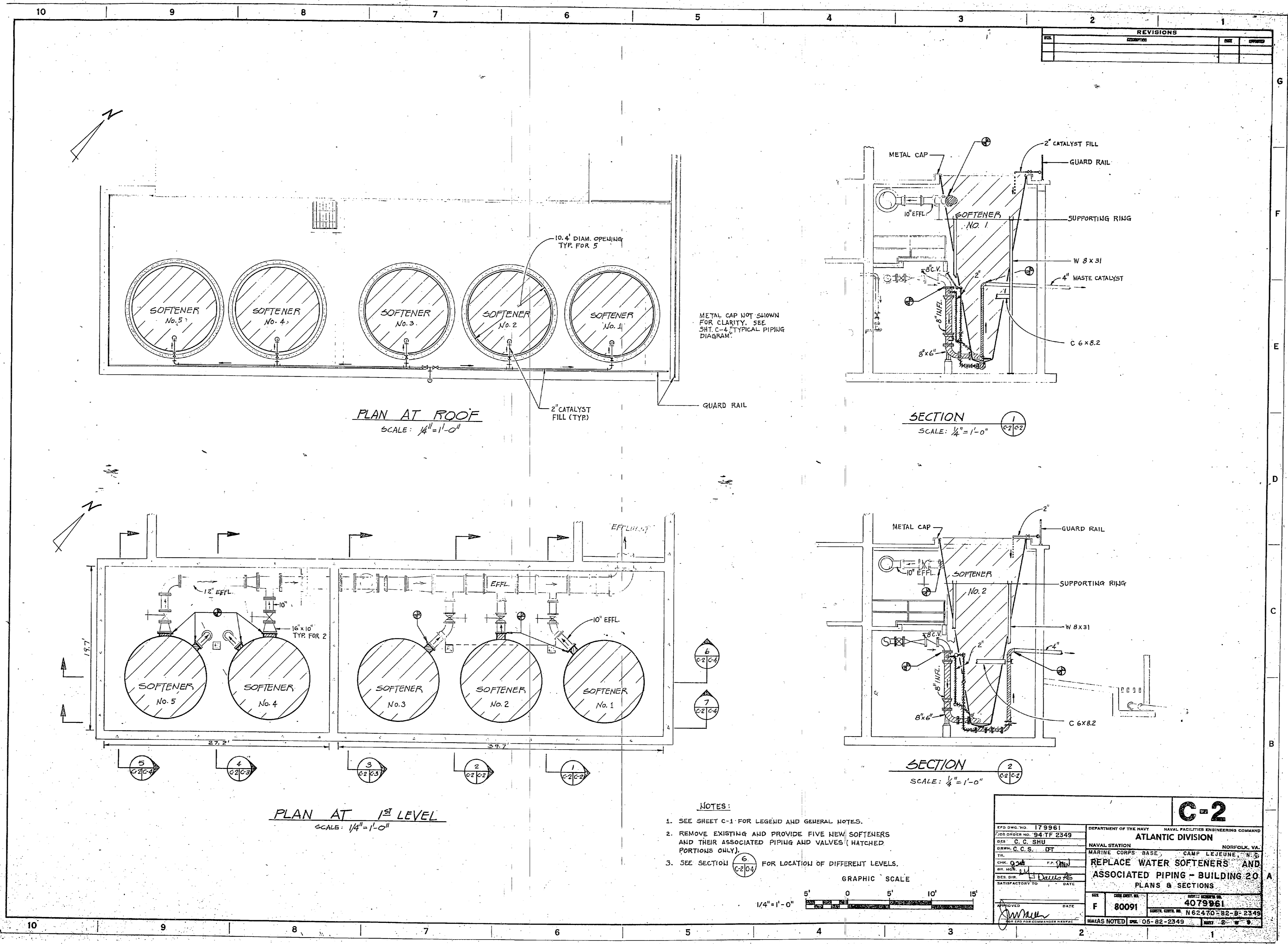
- EXISTING PIPING TO REMAIN
- - - EXISTING PIPING AND SOFTENERS TO BE REMOVED AND REPLACED WITH NEW
- ⊕ FLANGED JOINT
- ⊕ PUSH-ON JOINT
- ⊕ THREADED JOINT
- ⊕ UNION
- ⊕ GATE VALVE
- ⊕ CHECK VALVE
- ⊕ POINT OF CONNECTION TO EXISTING PIPING



SECTION KEY



C-1	
PROJECT NO. 179960	DEPARTMENT OF THE NAVY NAVAL FACILITIES ENGINEERING COMMAND
DESIGN NO. 94 TF 2349	ATLANTIC DIVISION
DESIGNER C. C. SHU	NAVAL STATION NORFOLK, VA.
CHECKER C. C. S. DT	MARINE CORPS BASE CAMP LEJEUNE, N. C.
DATE 10/1/54	
BY [Signature]	
APPROVED [Signature]	
SIR CODE NO. F 80091	AVIATION BRANCH 4079960
DATE	ENGINEERING NO. N 62470-82-B-2349
REVISIONS	DATE 10-1-54



REVISIONS		
NO.	DESCRIPTION	DATE

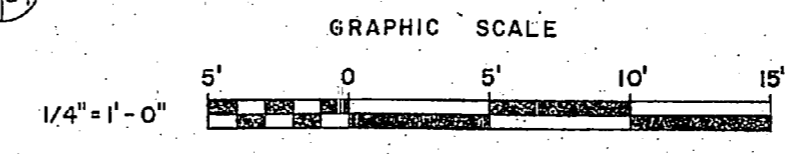
PLAN AT ROOF
SCALE: 1/4" = 1'-0"

SECTION 1
SCALE: 1/4" = 1'-0"

PLAN AT 1ST LEVEL
SCALE: 1/4" = 1'-0"

SECTION 2
SCALE: 1/4" = 1'-0"

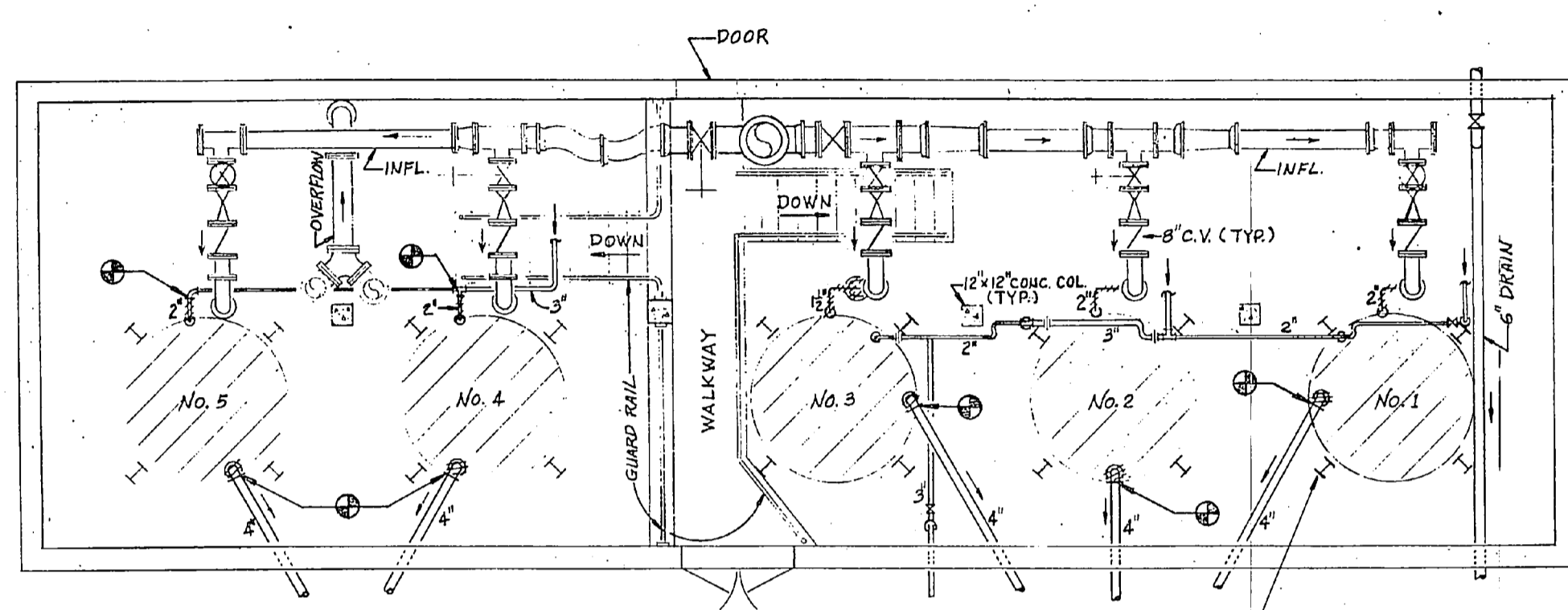
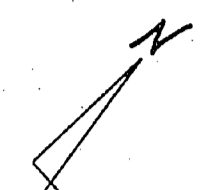
- NOTES:
- SEE SHEET C-1 FOR LEGEND AND GENERAL NOTES.
 - REMOVE EXISTING AND PROVIDE FIVE NEW SOFTENERS AND THEIR ASSOCIATED PIPING AND VALVES (HATCHED PORTIONS ONLY).
 - SEE SECTION 6 FOR LOCATION OF DIFFERENT LEVELS.



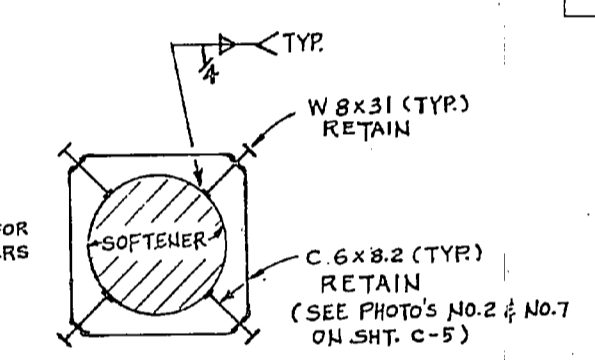
C-2	
EFD. DWG. NO. 179961 DES. ORDER NO. 94TF 2349 DES. C. C. SHU DRWN. C. C. S. CHKD. J. J. [unclear] APP. [unclear] DATE 11/21/52 INTERFACED TO [unclear]	DEPARTMENT OF THE NAVY NAVAL FACILITIES ENGINEERING COMMAND ATLANTIC DIVISION NAVAL STATION NORFOLK, VA. MARINE CORPS BASE CAMP LEJEUNE, N.C. REPLACE WATER SOFTENERS AND ASSOCIATED PIPING - BUILDING 20 PLANS & SECTIONS
SHEET NO. 80091 DATE 4079861 NAVY CONTROL NO. N 62470-82-B-2349 (WHEN NOTED) SPEC. 05-82-2349	1 2 3 4 5 6 7 8 9 10



REVISIONS		
NO.	DESCRIPTION	DATE

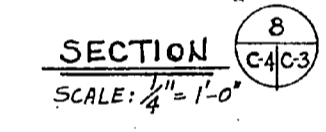


PLAN AT 2ND LEVEL
SCALE: 1/4" = 1'-0"

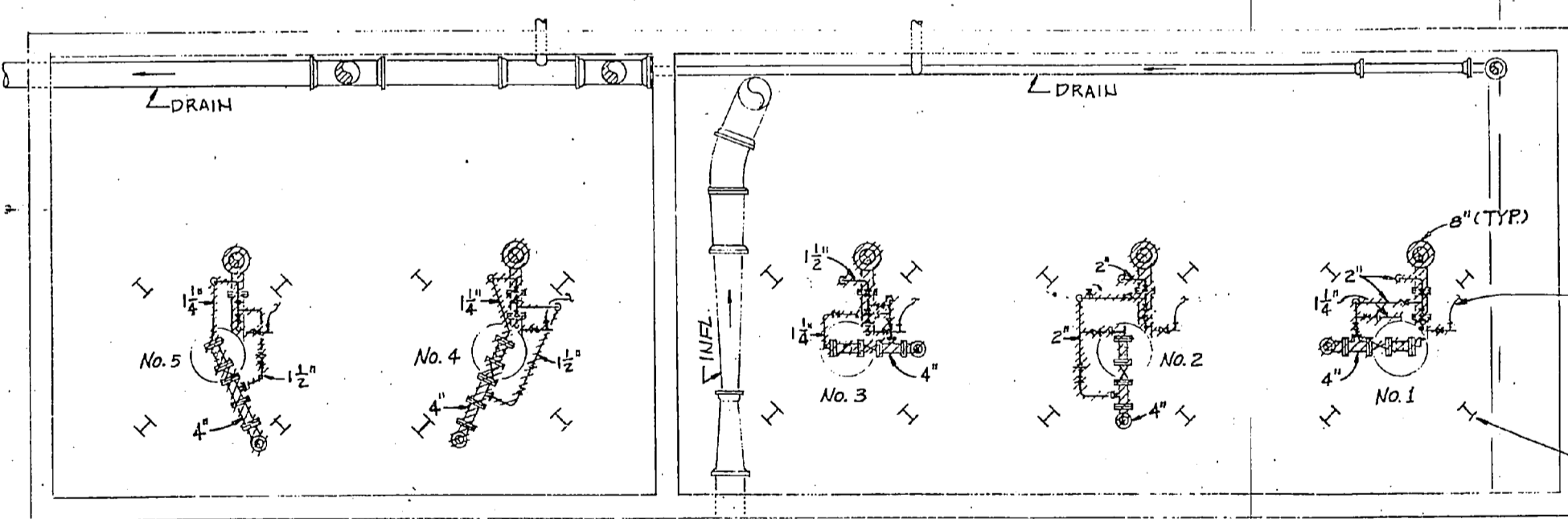


SECTION 3
SCALE: 1/4" = 1'-0"

NOTE:
TYPICAL FOR
5 SOFTENERS



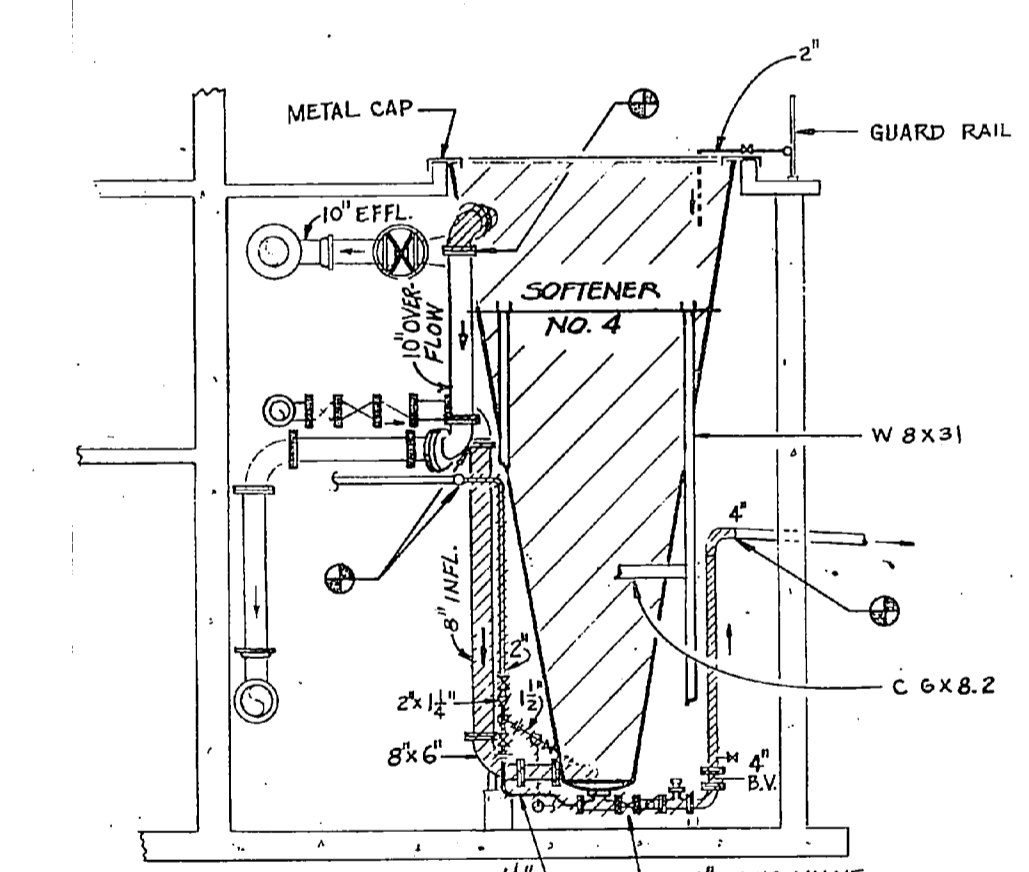
SECTION 8
SCALE: 1/4" = 1'-0"



PLAN AT 3RD LEVEL
SCALE: 1/4" = 1'-0"

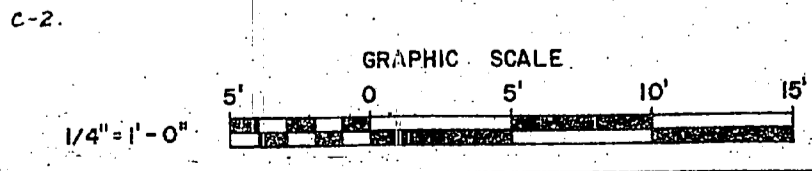
1" LIME SOLUTION
HOSE (TYP.)

W 8 x 31 (TYP.)

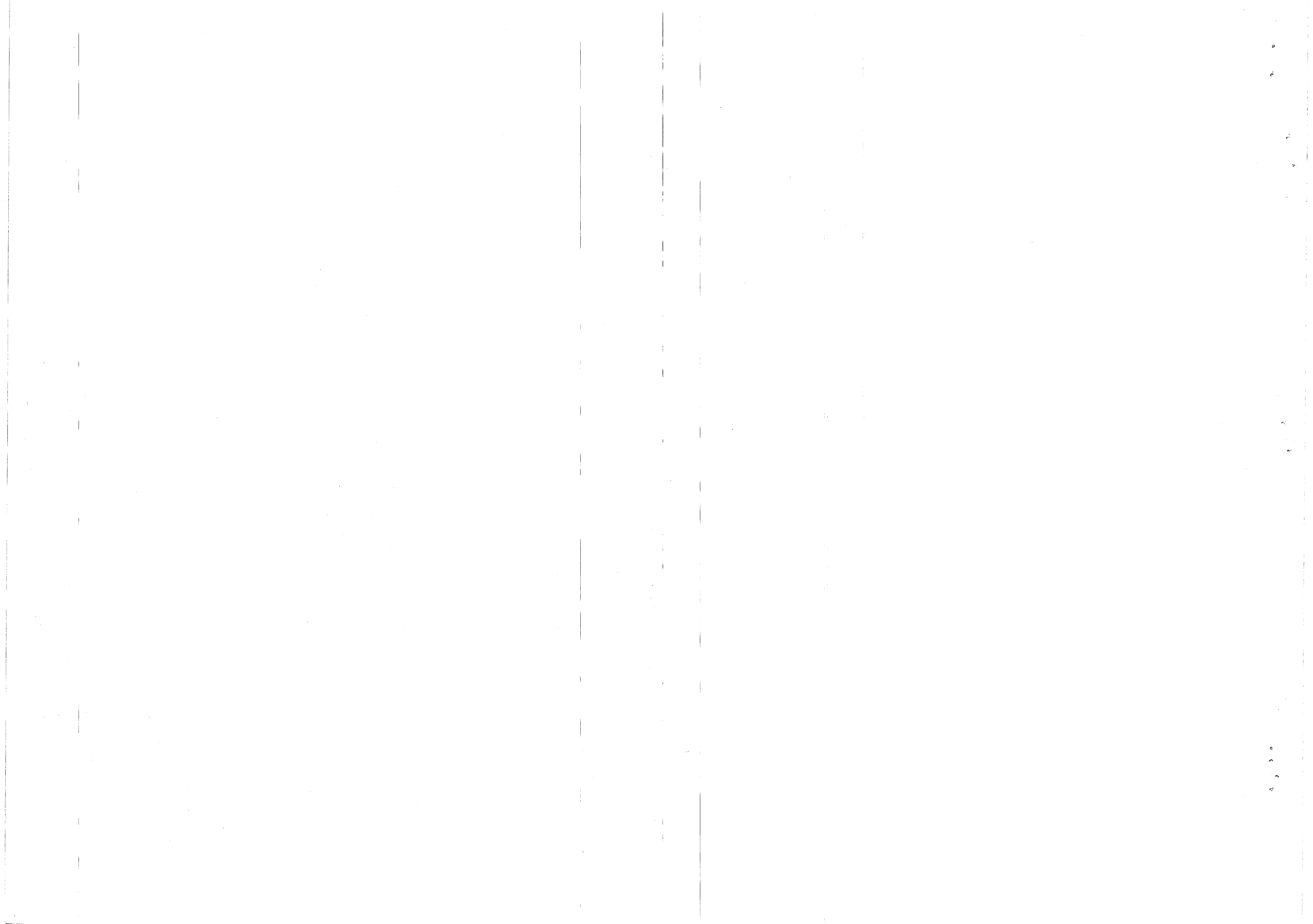


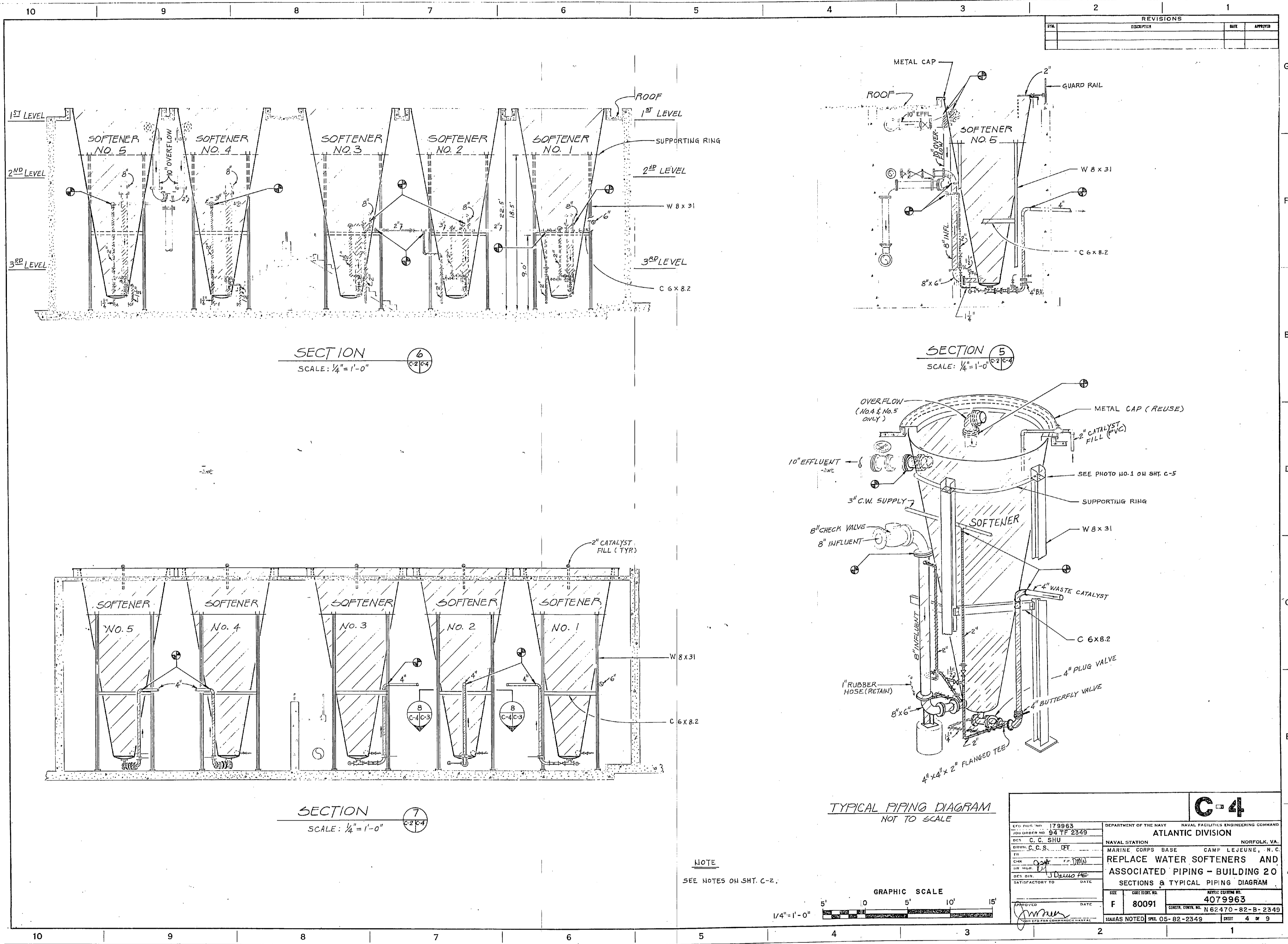
SECTION 4
SCALE: 1/4" = 1'-0"

NOTE
SEE NOTES ON SHT. C-2.



LTD ENG NO. 179962 PROJECT NO. 94 TF 2349 DES. C. C. SHU DRAWN. C. C. S. DPT TR. CHK. P. P. SMITH DES. DIR. J. D. HALL SATISFACTORY TO DATE		C-3	
		DEPARTMENT OF THE NAVY NAVAL FACILITIES ENGINEERING COMMAND ATLANTIC DIVISION NORFOLK, VA. NAVAL STATION MARINE CORPS BASE, CAMP LEJEUNE, N.C. REPLACE WATER SOFTENERS AND ASSOCIATED PIPING - BUILDING 20	
USE FOR DES. NO. 4079962 F 80091	DATE 22/55	DRAWING NO. N62470-82-B-2349	SHEET 3 OF 3





REVISIONS		
NO.	DESCRIPTION	DATE

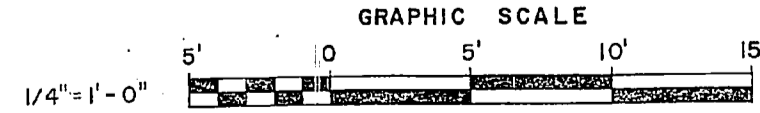
SECTION 6
SCALE: 1/4" = 1'-0"

SECTION 5
SCALE: 1/4" = 1'-0"

SECTION 7
SCALE: 1/4" = 1'-0"

TYPICAL PIPING DIAGRAM
NOT TO SCALE

NOTE
SEE NOTES ON SHT. C-2.



LDC PROJ. NO. 179963 TDC ORDER NO. 92 TF 2349 DRWN. C. C. SHU ENR CHK. [Signature] DES. DIR. J. DALLON SATISFACTORY TO [Signature] DATE		C-4 DEPARTMENT OF THE NAVY NAVAL FACILITIES ENGINEERING COMMAND ATLANTIC DIVISION NAVAL STATION NORFOLK, VA. MARINE CORPS BASE CAMP LEJEUNE, N.C. REPLACE WATER SOFTENERS AND ASSOCIATED PIPING - BUILDING 20 SECTIONS & TYPICAL PIPING DIAGRAM	
SIZE: F CORR. DIR. NO.: 80091 DATE:	NAVY: 4079963 CONSTR. CONTR. NO.: N 62470-82-B-2349 SHEET: 4 OF 9	HAZARDOUS NOTED SPEC. 05-82-2349	

Handwritten text, possibly a signature or name, written vertically in the center of the page.

10

9

8

7

6

5

4

3

2

1

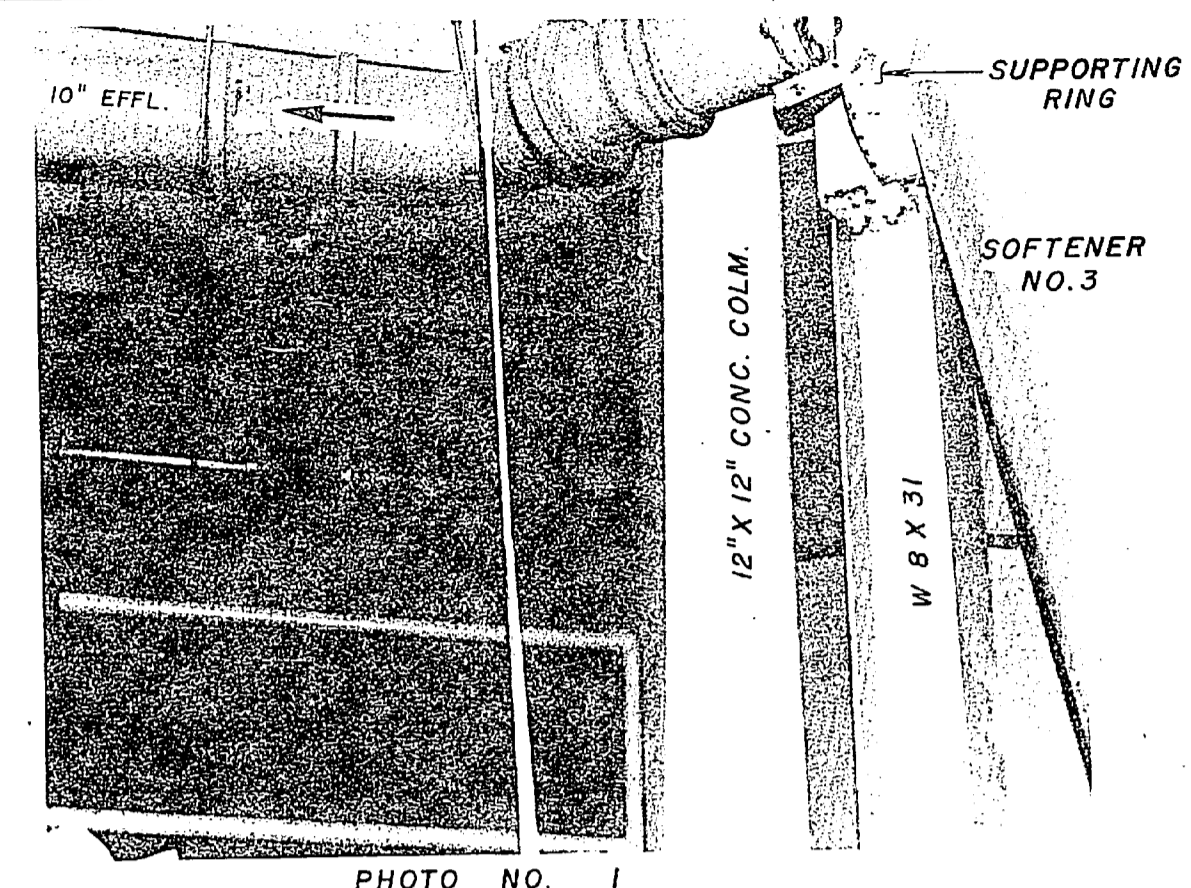


PHOTO NO. 1

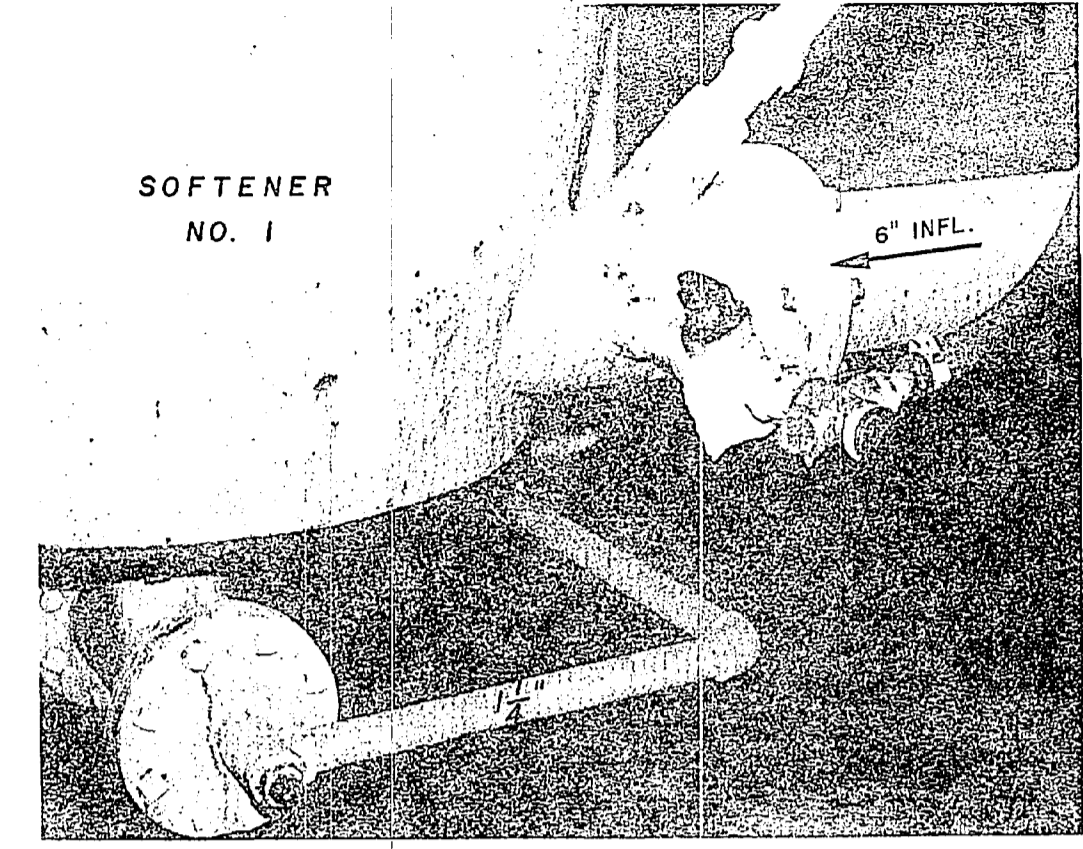
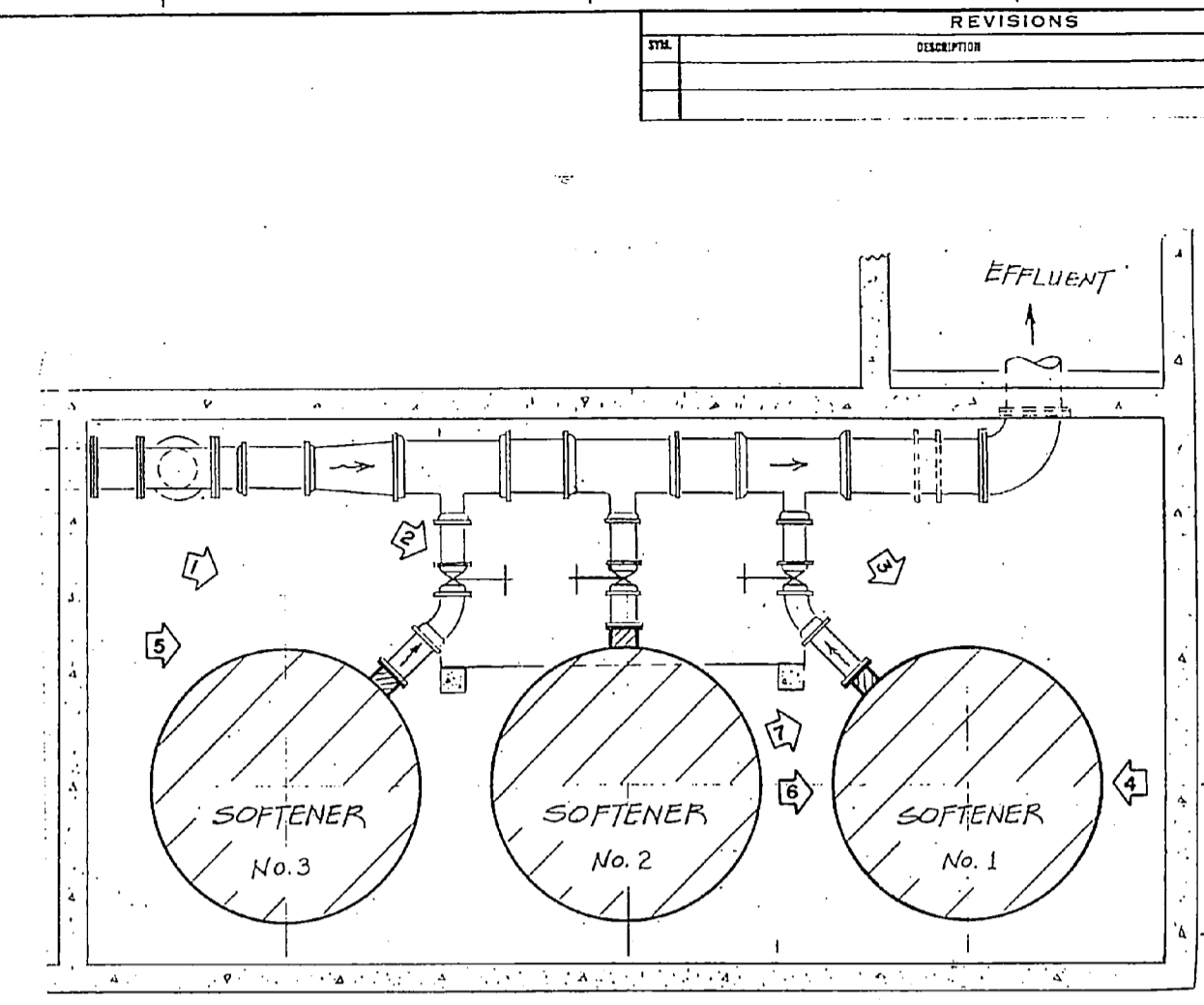


PHOTO NO. 4



LOCATION PLAN

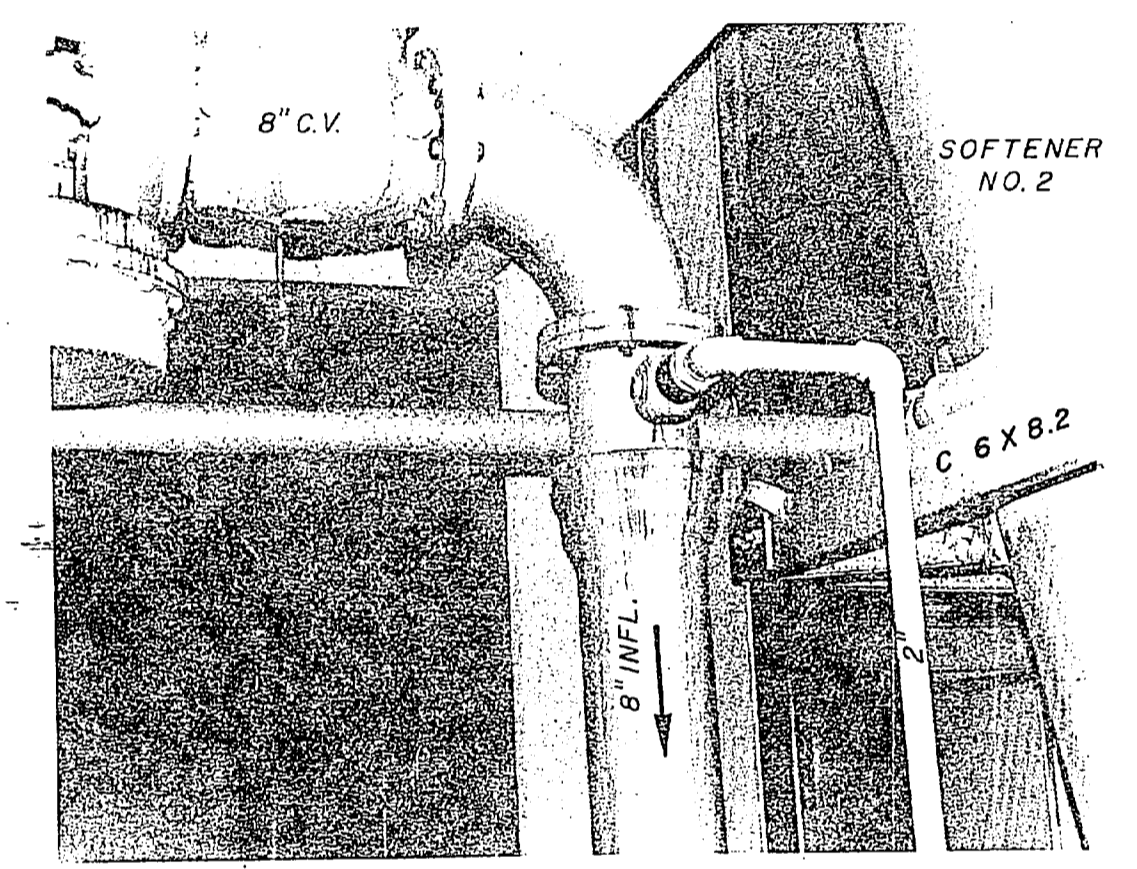


PHOTO NO. 2

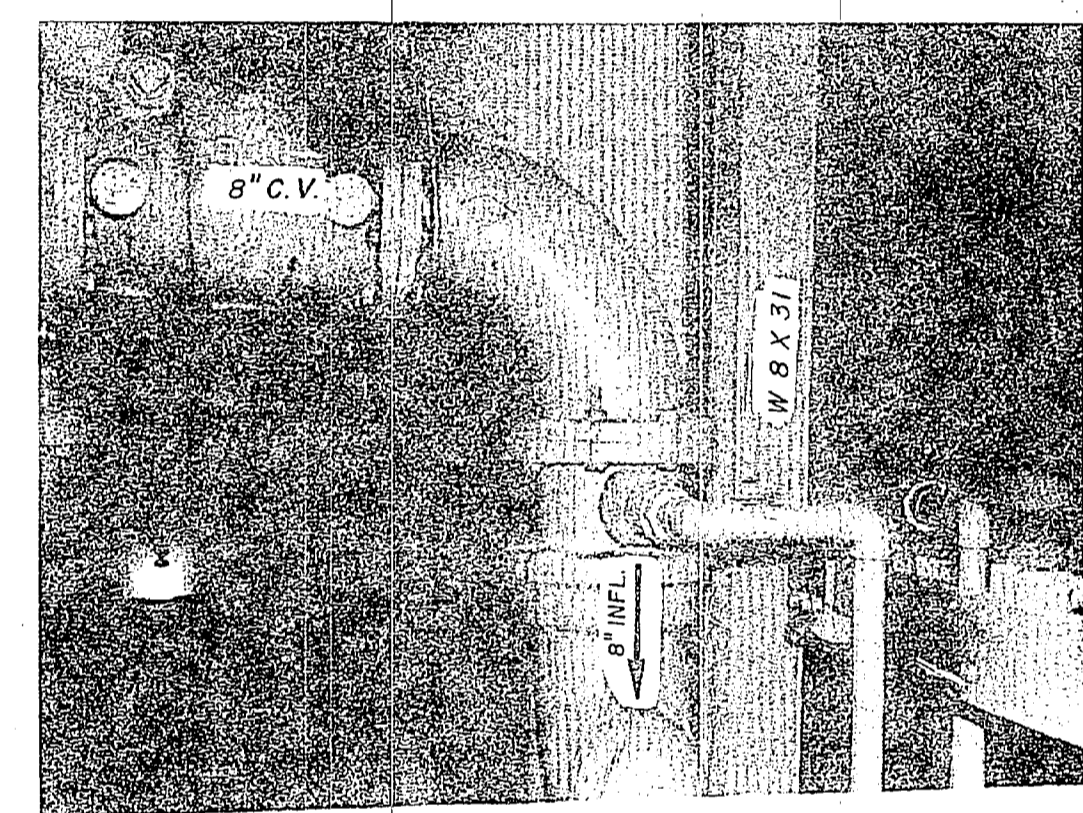


PHOTO NO. 5

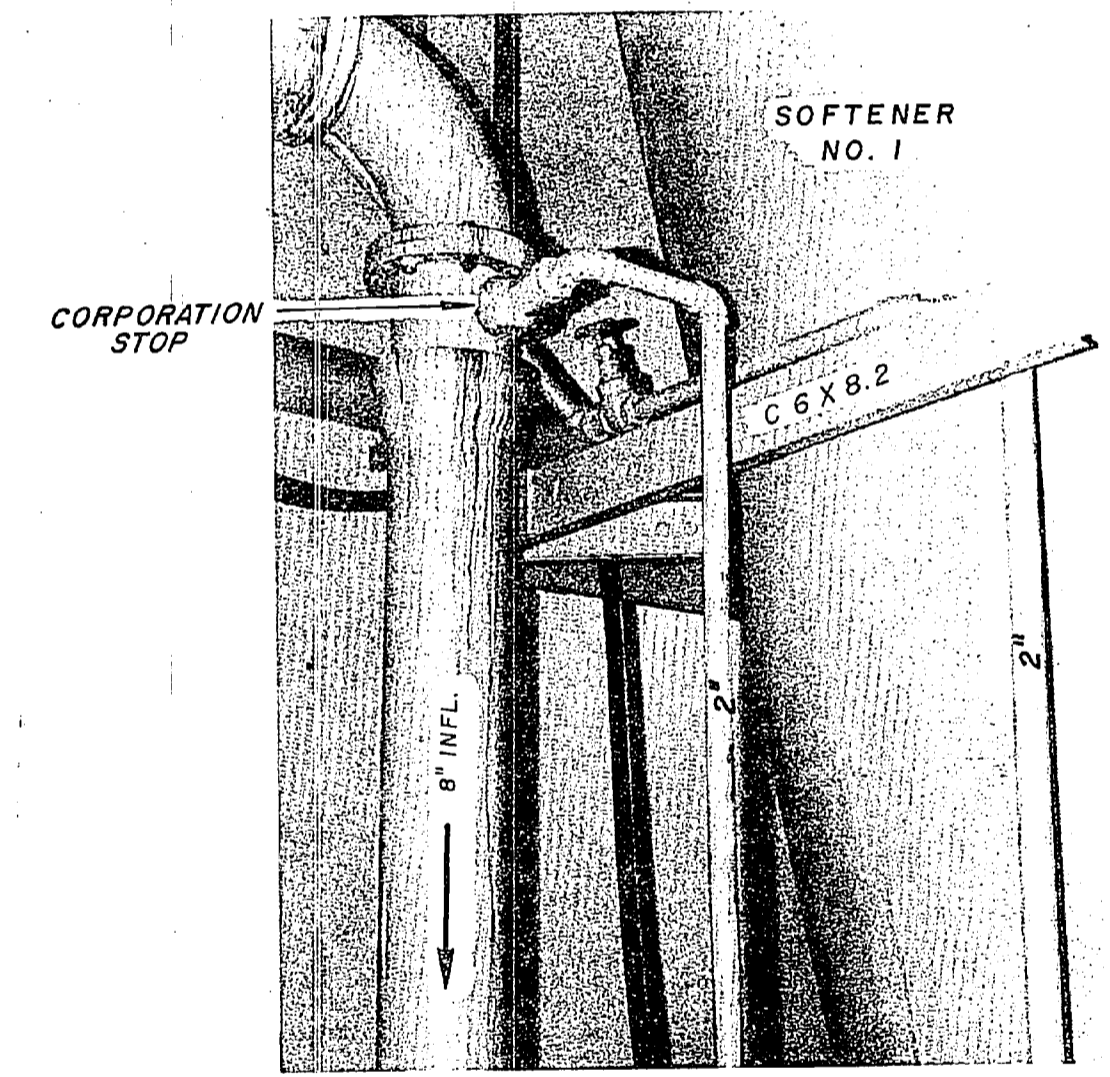


PHOTO NO. 7

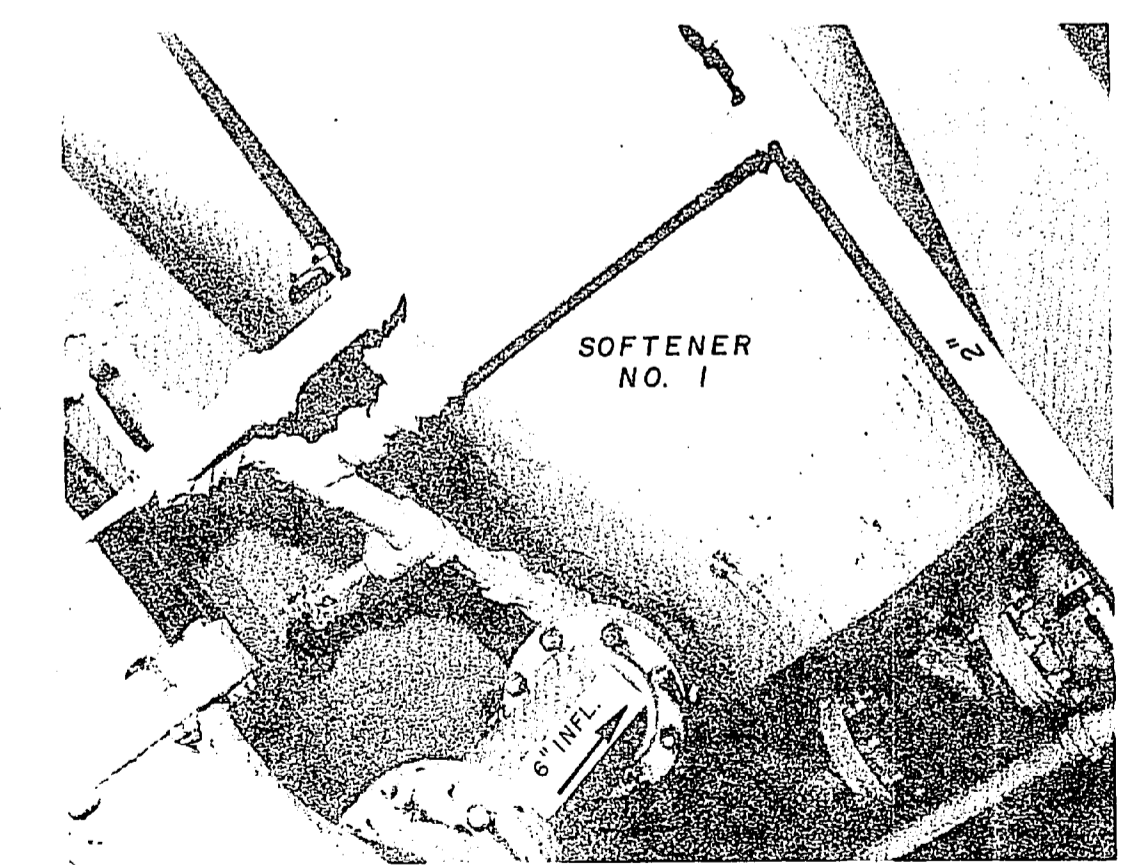


PHOTO NO. 3

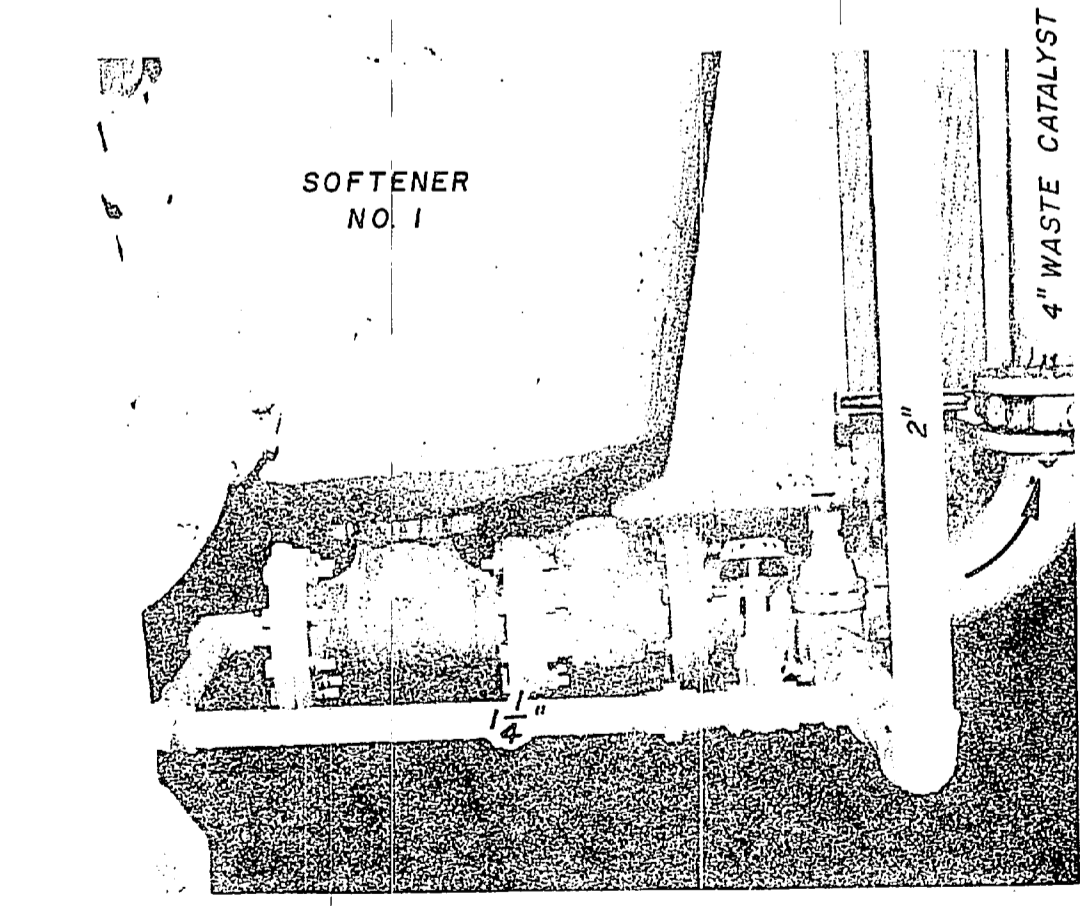


PHOTO NO. 6

C-5	
DEPARTMENT OF THE NAVY NAVAL FACILITIES ENGINEERING COMMAND	
ATLANTIC DIVISION	
EXPL. DWG. NO. 179964	NAVAL STATION NORFOLK, VA.
JOB SHEET NO. 94 TF 2349	MARINE CORPS BASE CAMP LEJEUNE, N. C.
DES. C. C. SHU	REPLACE WATER SOFTENERS AND ASSOCIATED PIPING - BUILDING 20
CHKD. C. C. S. OPT.	PHOTOS
DATE: 10/24/54	
DES. DIR: J. D. McNEIL	
SATISFACTORY TO: DATE:	
ISSUED: DATE:	
SCALE: NONE	SPEC. 05-82-2349 SHEET 5 OF 9

10

9

8

7

6

5

4

3

2

1

10

9

8

7

6

5

4

3

2

1

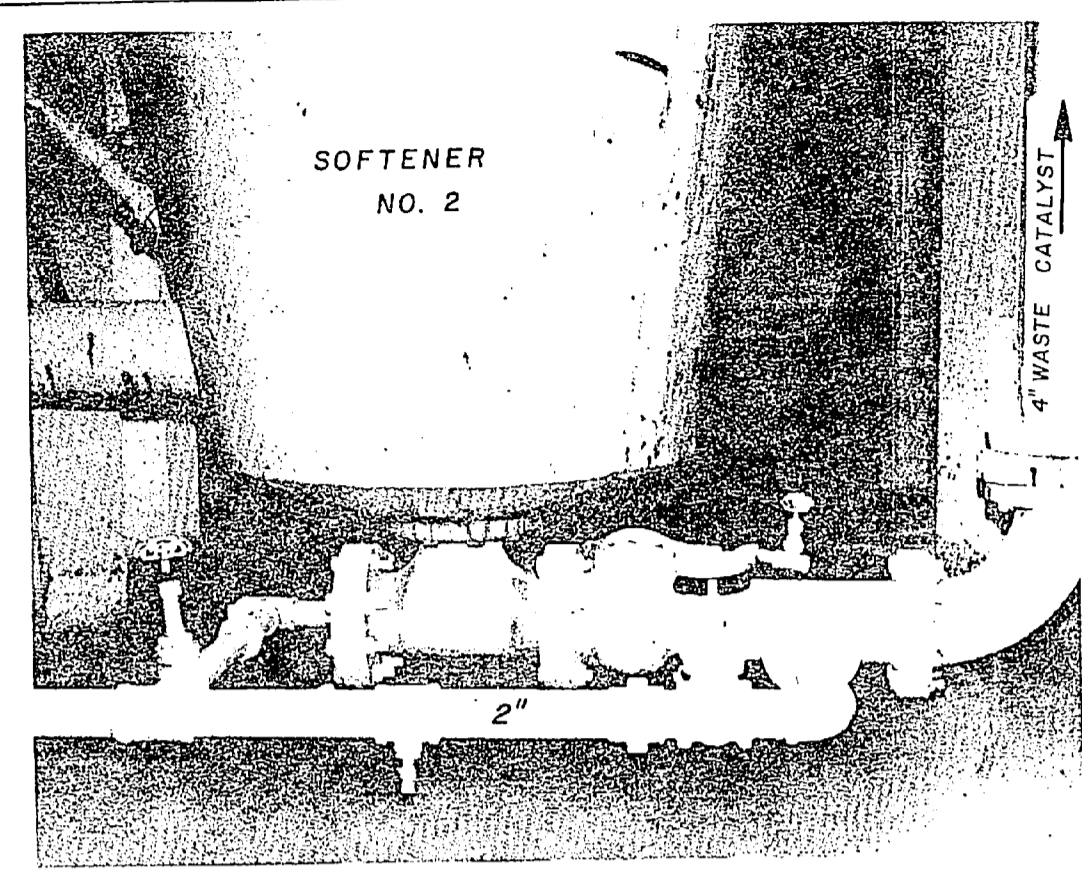


PHOTO NO. 8

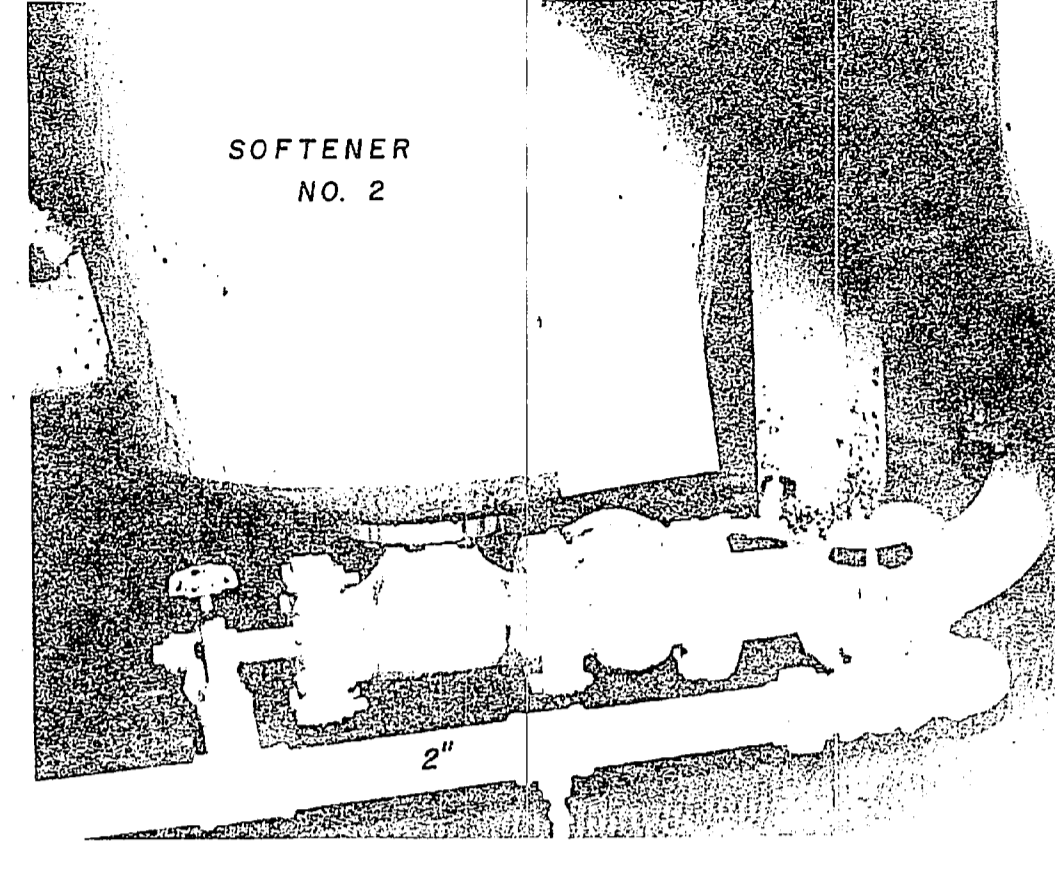


PHOTO NO. 10

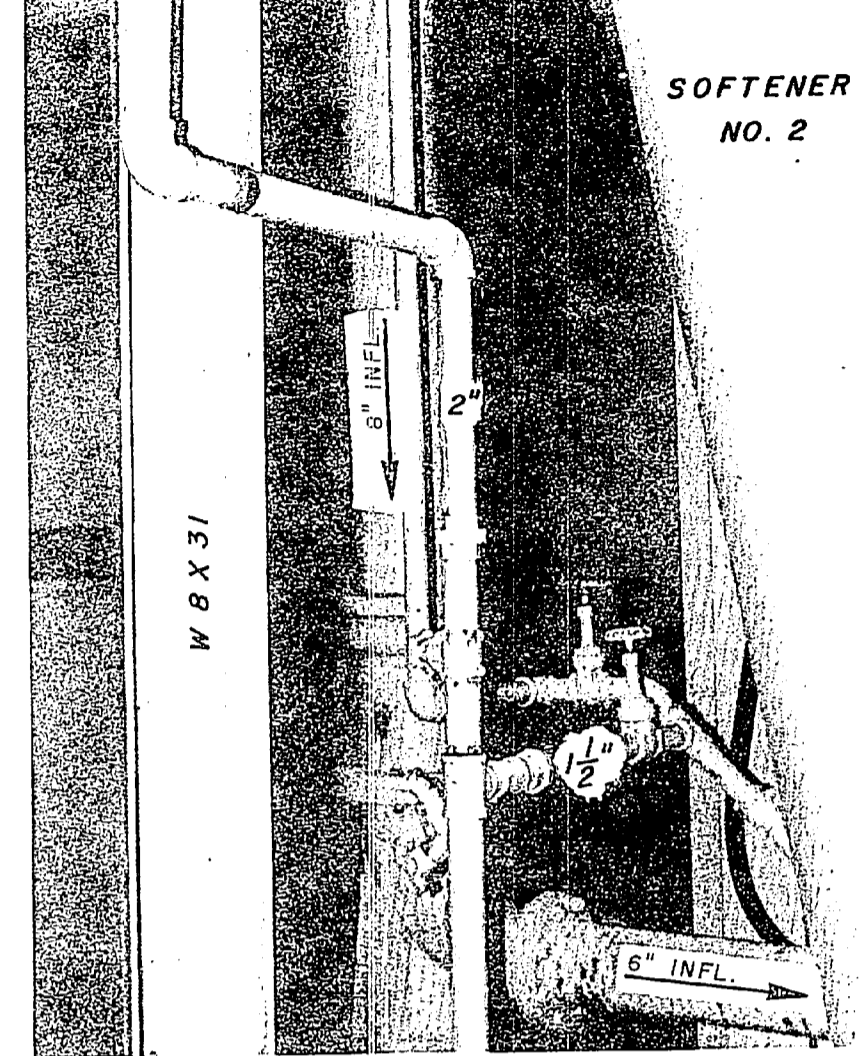


PHOTO NO. 12

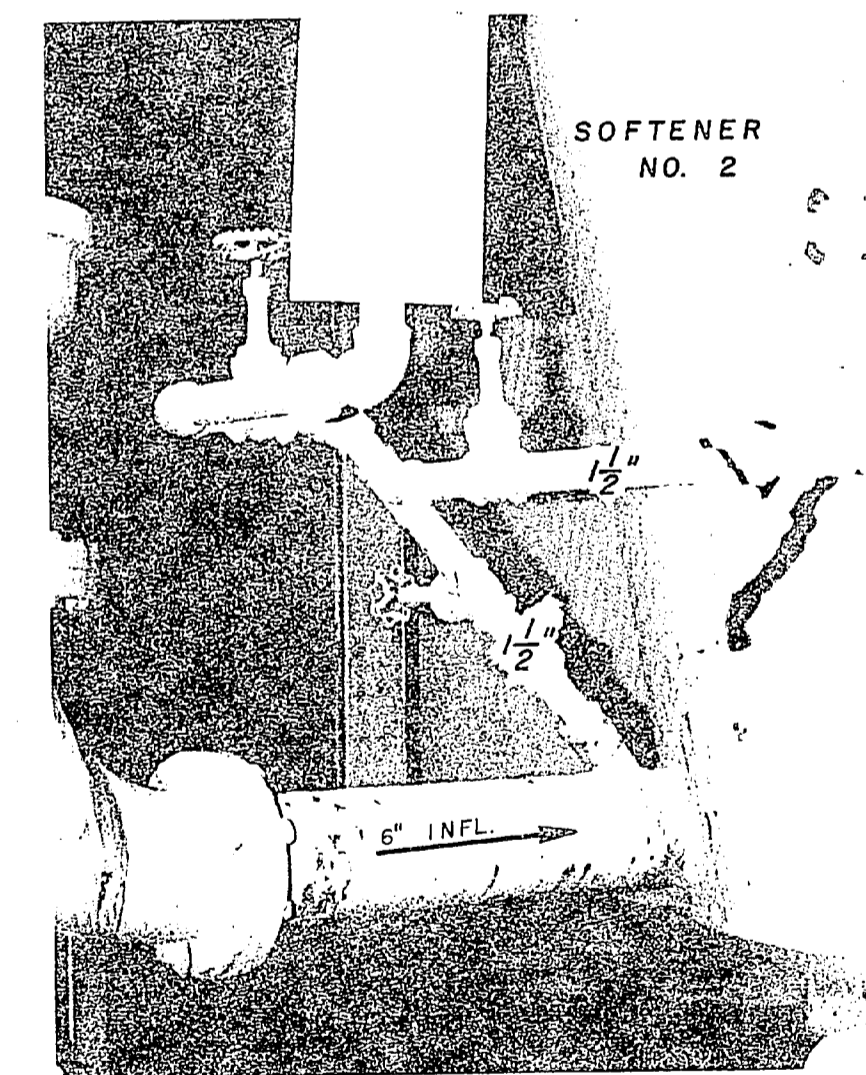


PHOTO NO. 9

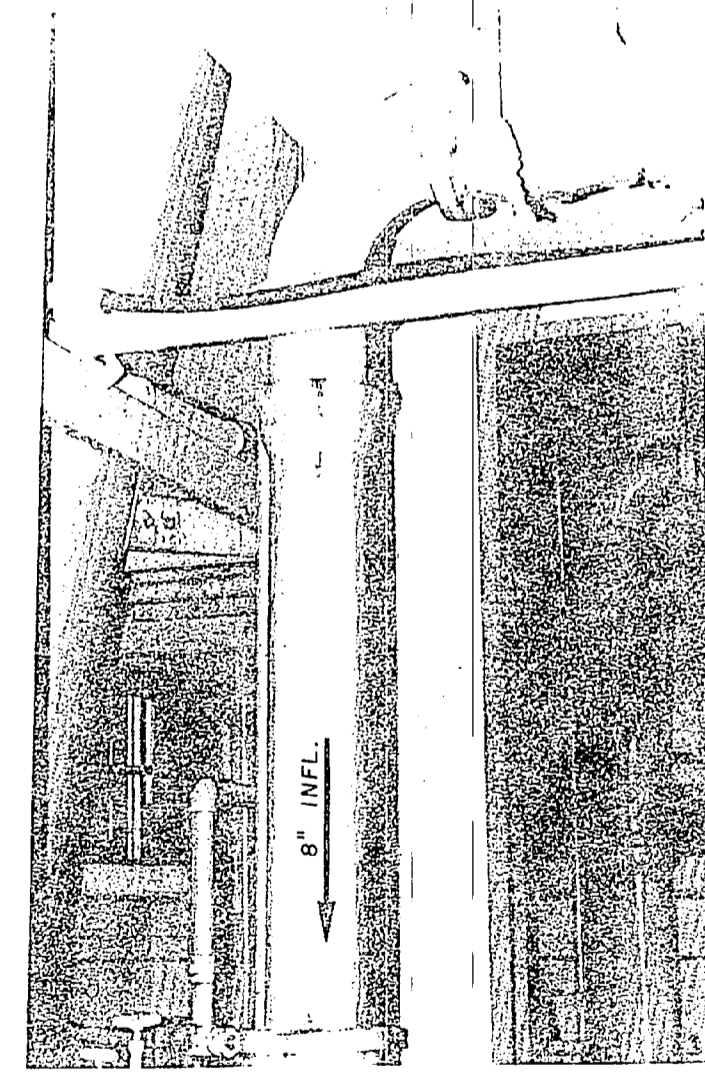


PHOTO NO. 11

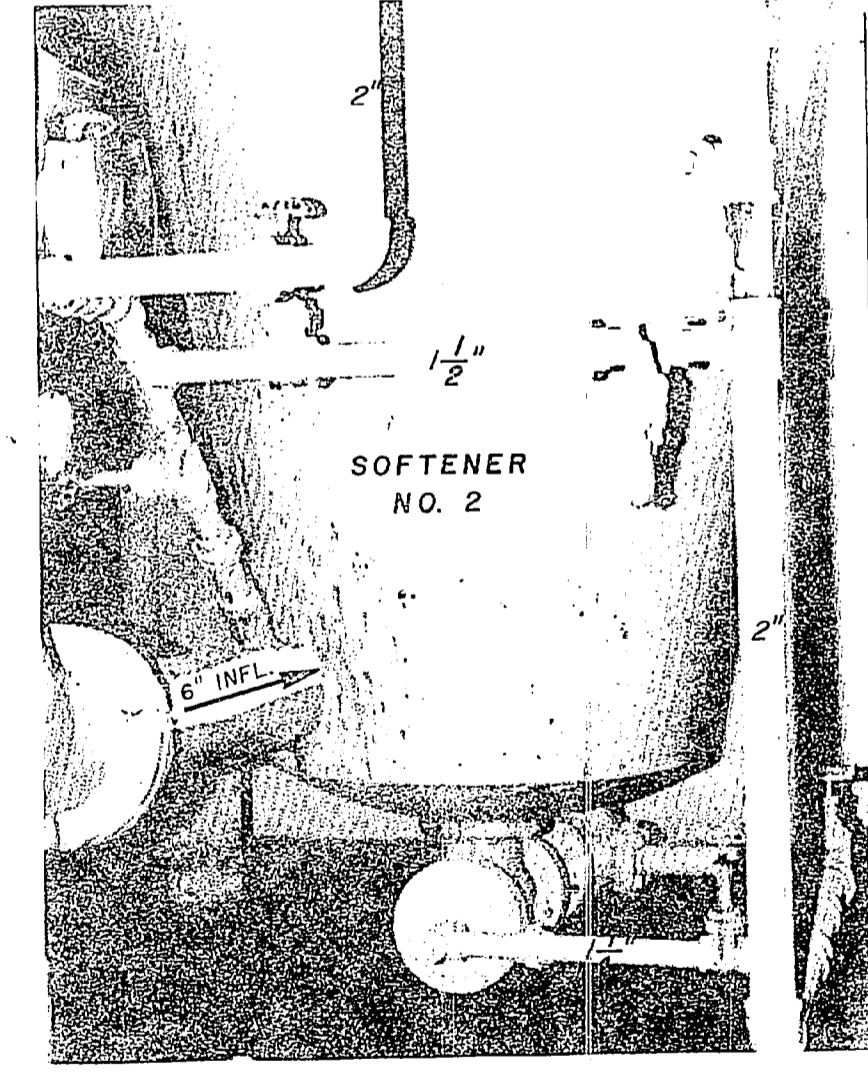
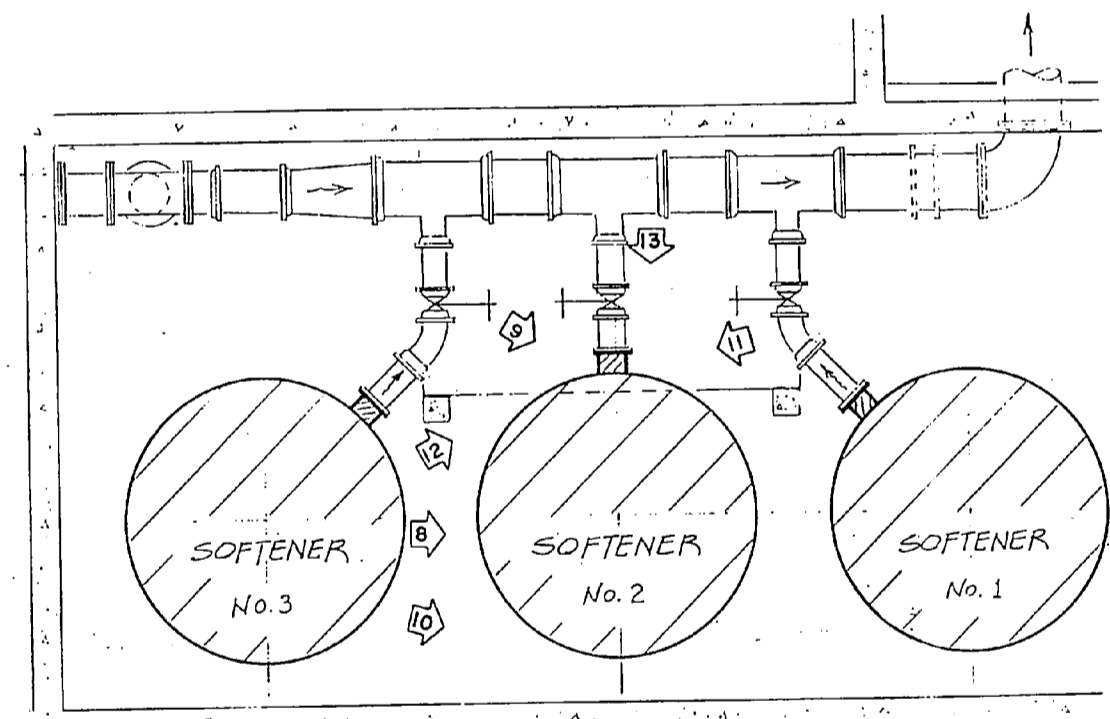


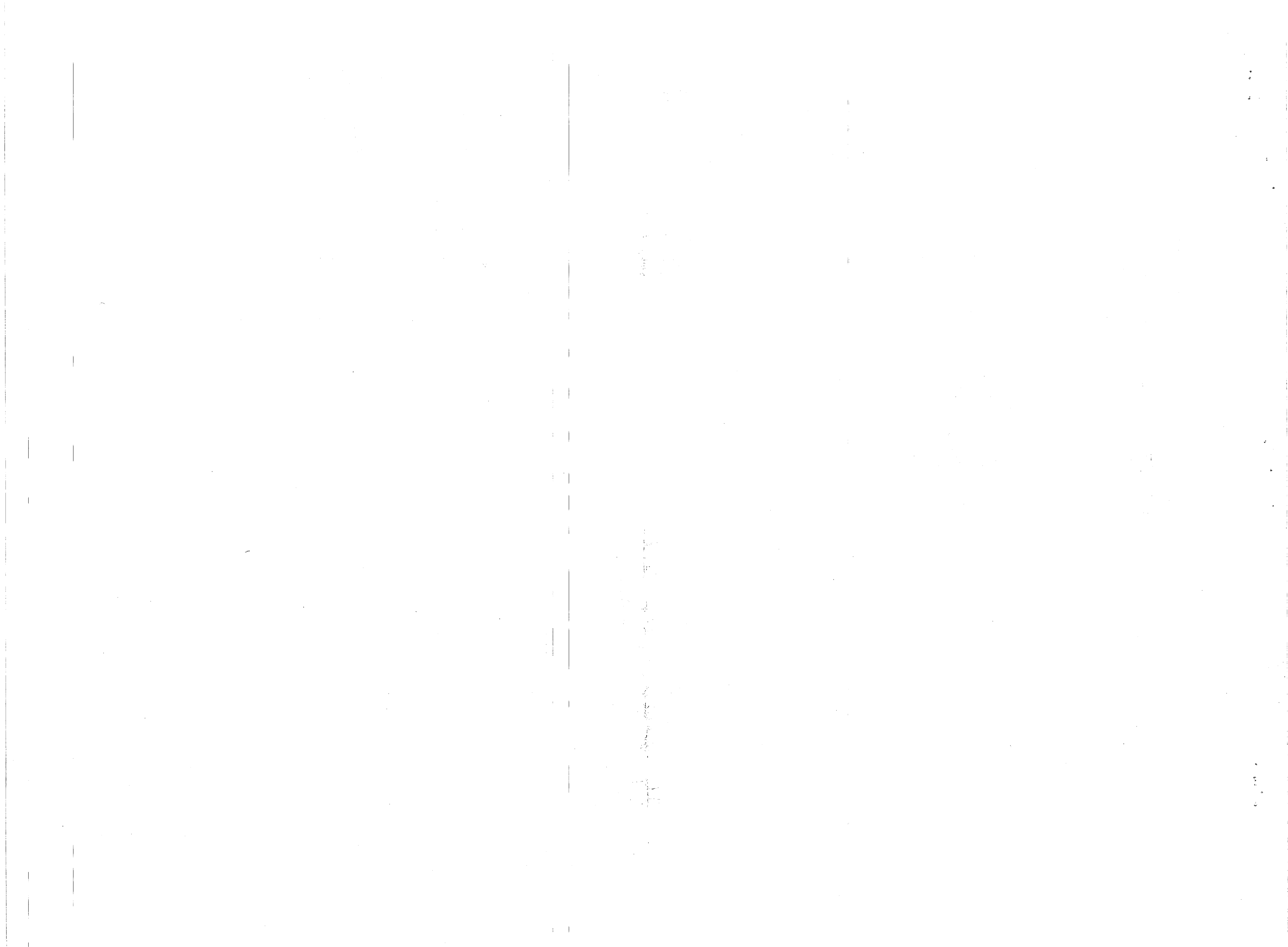
PHOTO NO. 13



LOCATION PLAN

REVISIONS		
NO.	DESCRIPTION	DATE

LTJ. NO. 179965 PROJECT NO. 84 TF 2349 BY: C. C. SHU CHECKED: C. C. S. DET DATE: 10/1/54 DRAWN BY: DAVIS DATE:		C-6 DEPARTMENT OF THE NAVY NAVAL FACILITIES ENGINEERING COMMAND ATLANTIC DIVISION NAVAL STATION NORFOLK, VA. MARINE CORPS BASE CAMP LEJEUNE, N. C. REPLACE WATER SOFTENERS AND ASSOCIATED PIPING - BUILDING 20 PHOTOS	
SIZE: F CODE: 80091 SCALE: NONE	NAVY DRAWING NO.: 4079965 CONSTR. CENTER NO.: N62470-82-B-2349 SPEC. 05-82-2349	SHEET 6 OF 9	



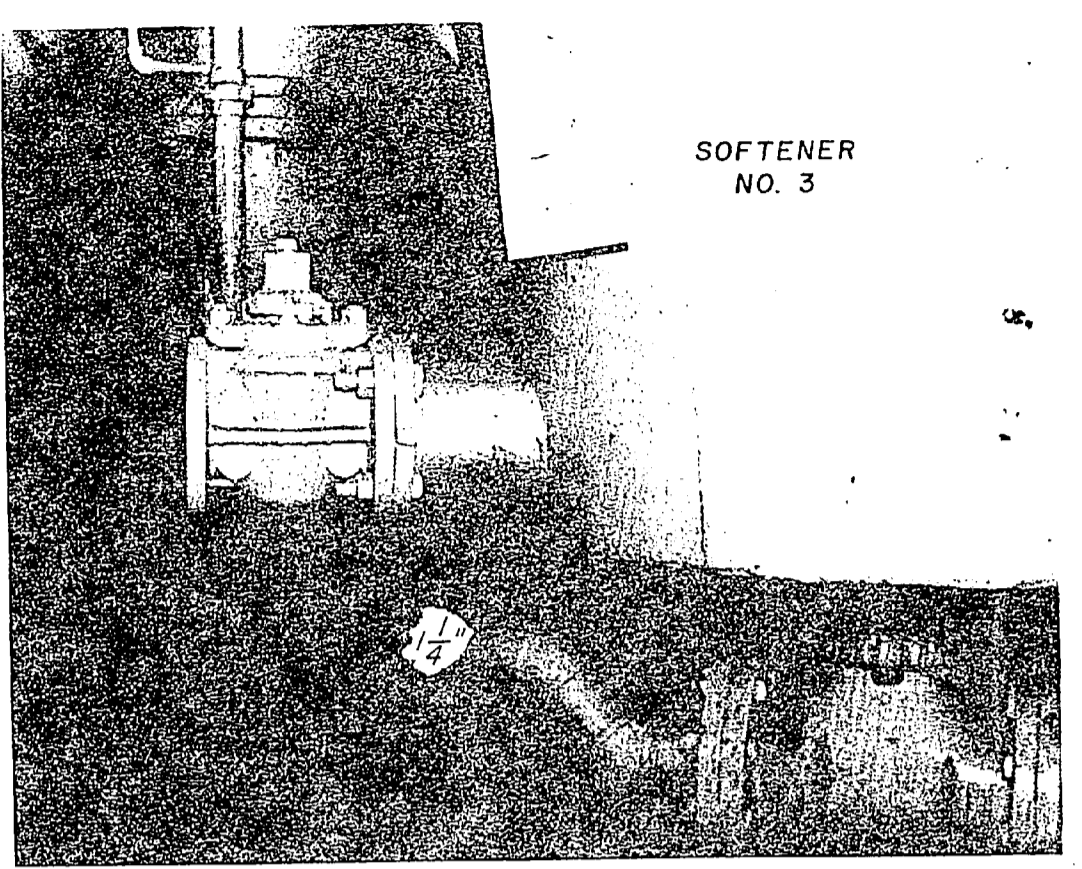


PHOTO NO. 14

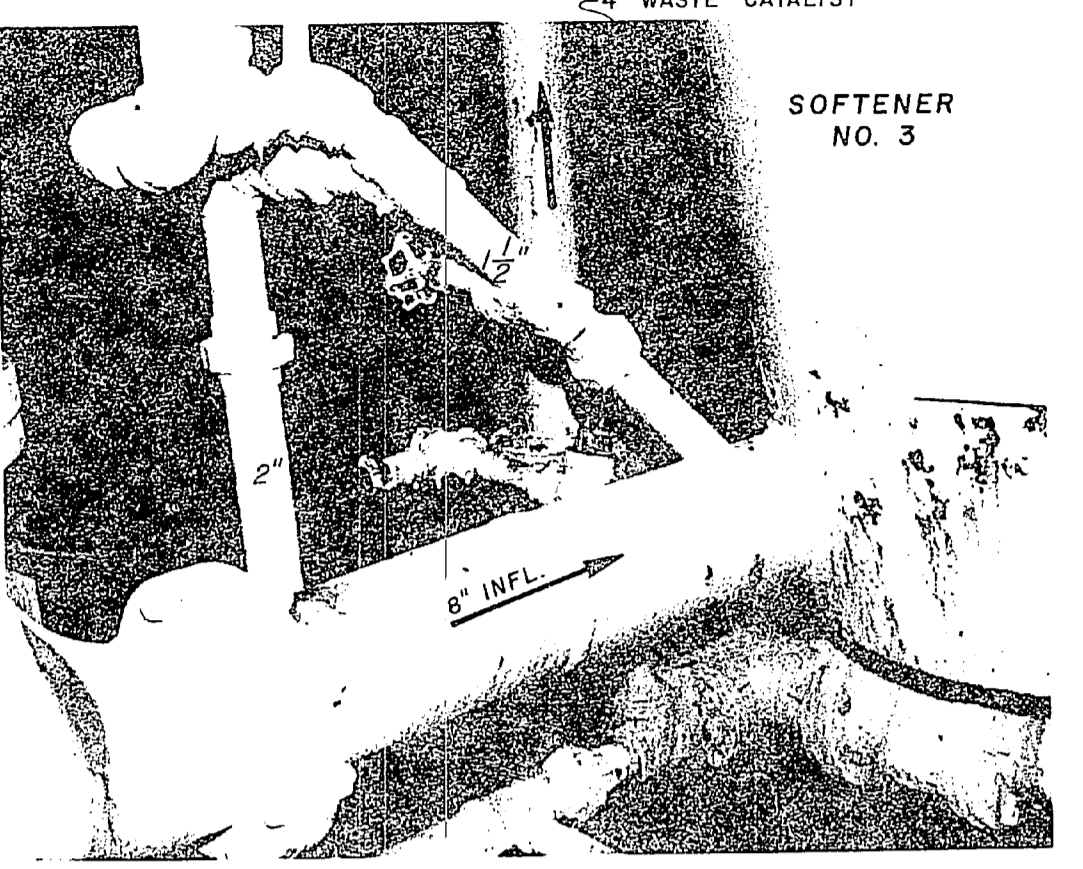


PHOTO NO. 17

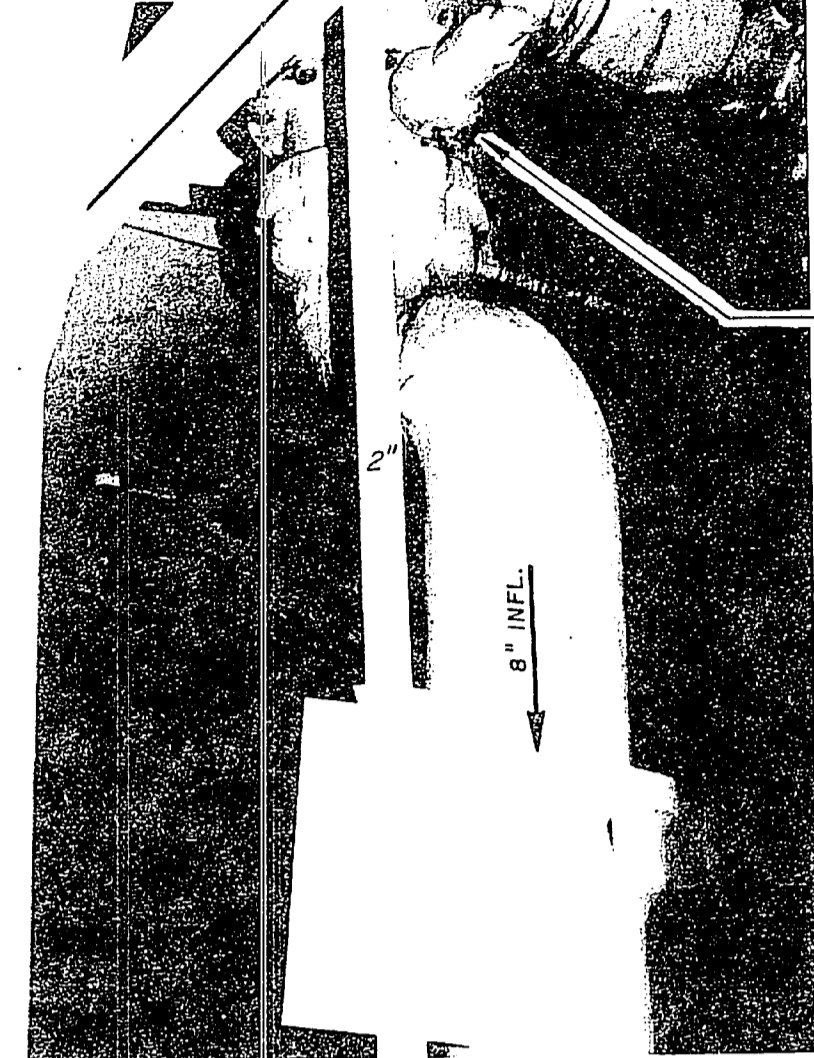


PHOTO NO. 19

REVISIONS			
NO.	DESCRIPTION	DATE	APPROVED

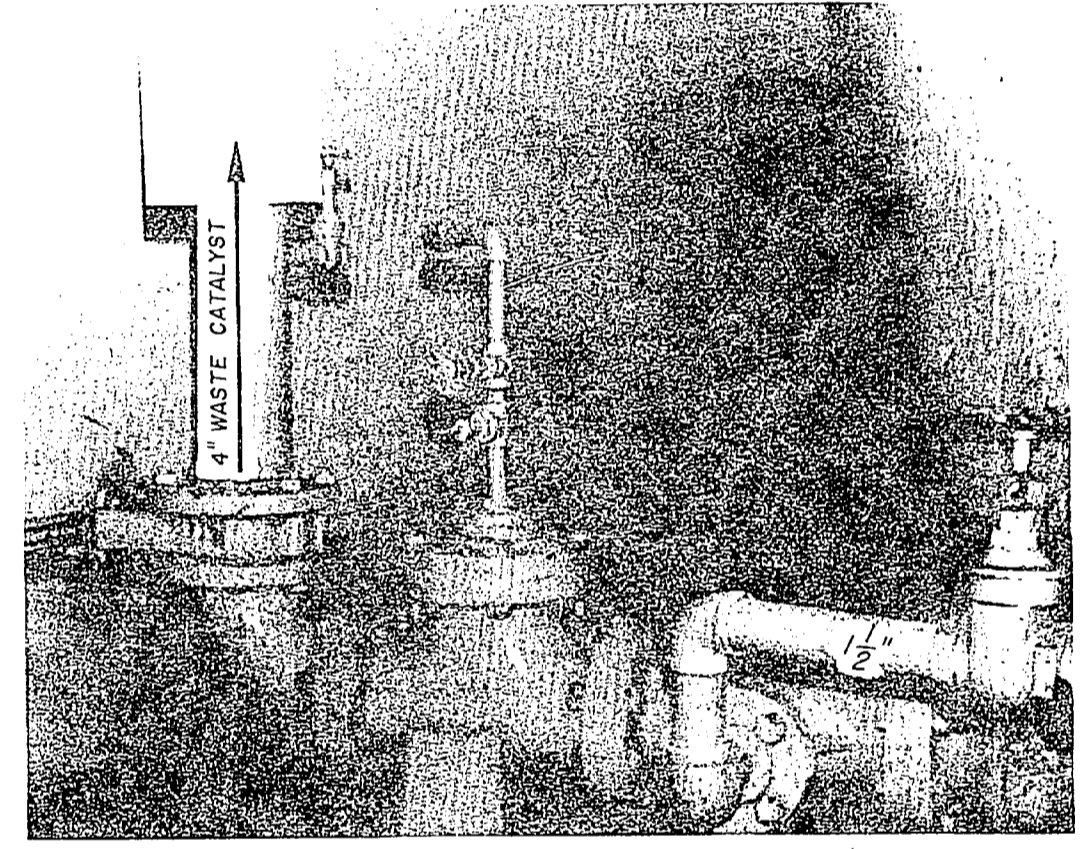


PHOTO NO. 15

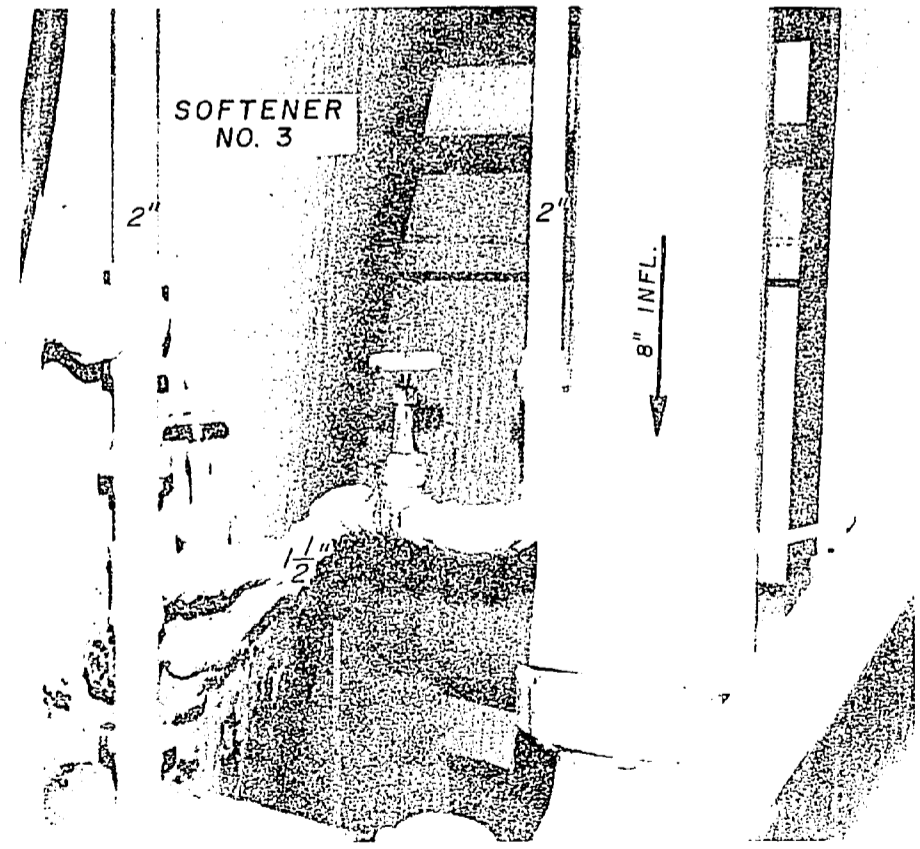


PHOTO NO. 16

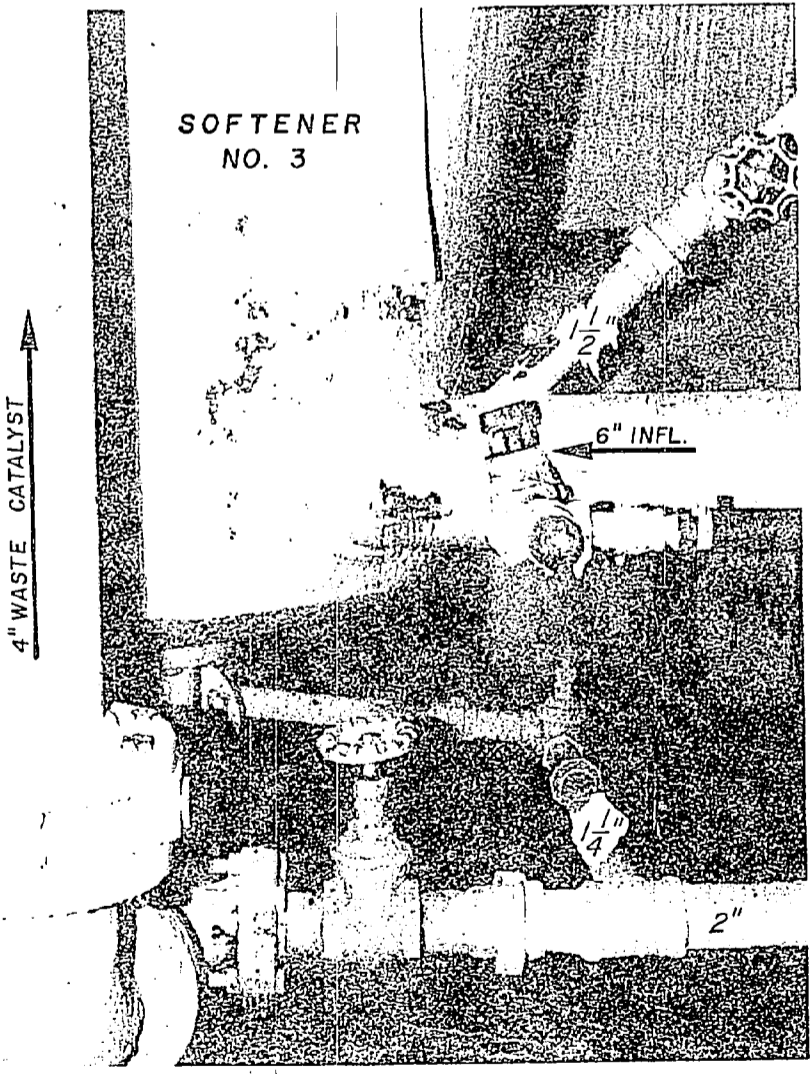
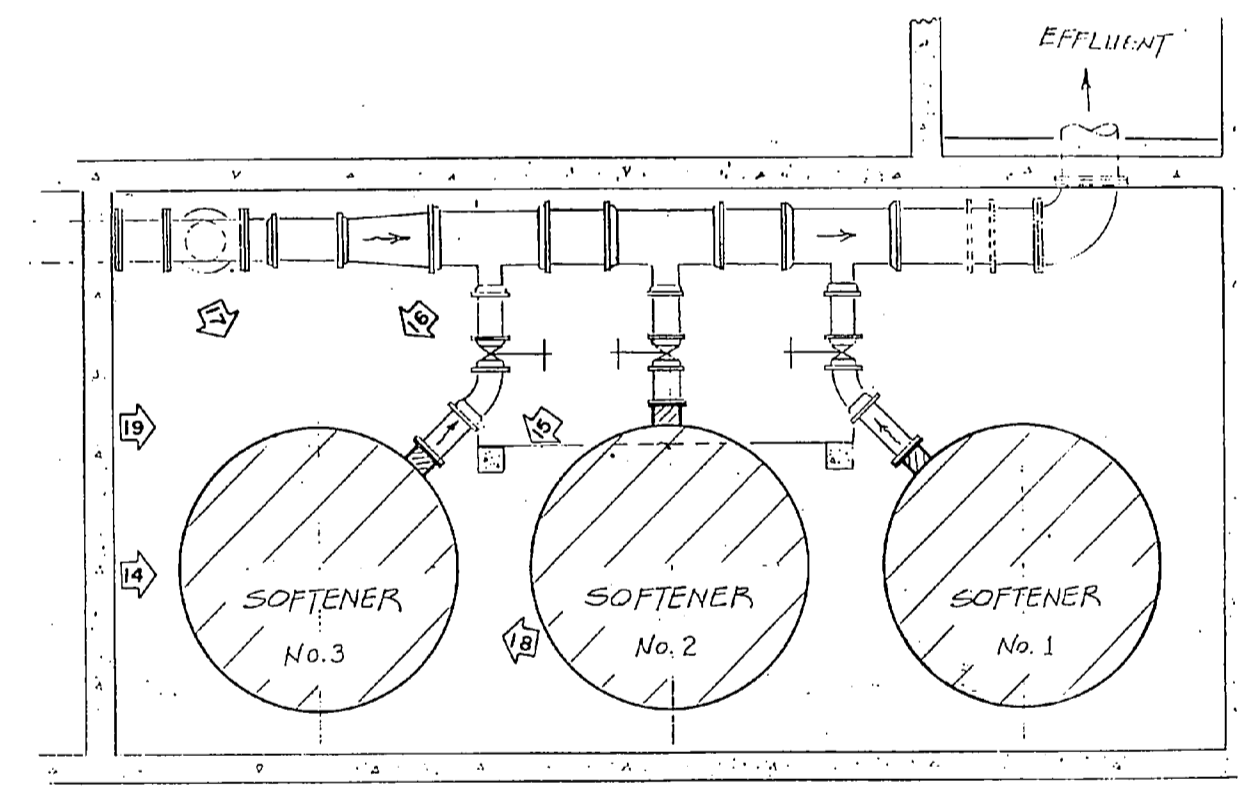


PHOTO NO. 18



LOCATION PLAN

C-7	
PROJ. NO. 179966 DRAWING NO. 94 TF 2349 DES. BY C. C. SHU CHECKED BY C. C. S. QPT DATE 10/1/50 DES. DIR. J. D. DAVIS SATISFACTORY TO:	DEPARTMENT OF THE NAVY - NAVAL FACILITIES ENGINEERING COMMAND ATLANTIC DIVISION NAVAL STATION - NORFOLK, VA. MARINE CORPS BASE CAMP LEJEUNE, N. C. REPLACE WATER SOFTENERS AND ASSOCIATED PIPING - BUILDING 20 PHOTOS
SHEET NO. F CODE IDENT. NO. 80091 SCALE NONE	NAVY DRAWING NO. 4079966 CONTROL CENTER NO. N 62470-82-B-2349 SHEET 7 OF 9



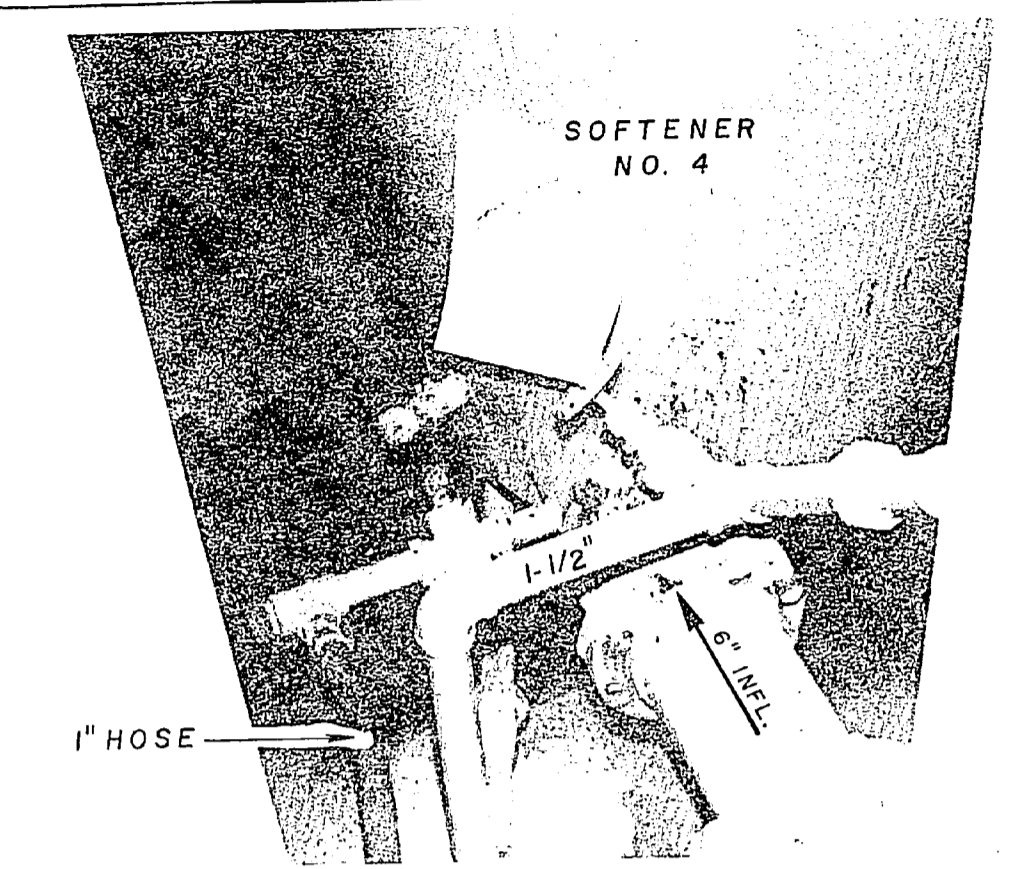


PHOTO NO. 20

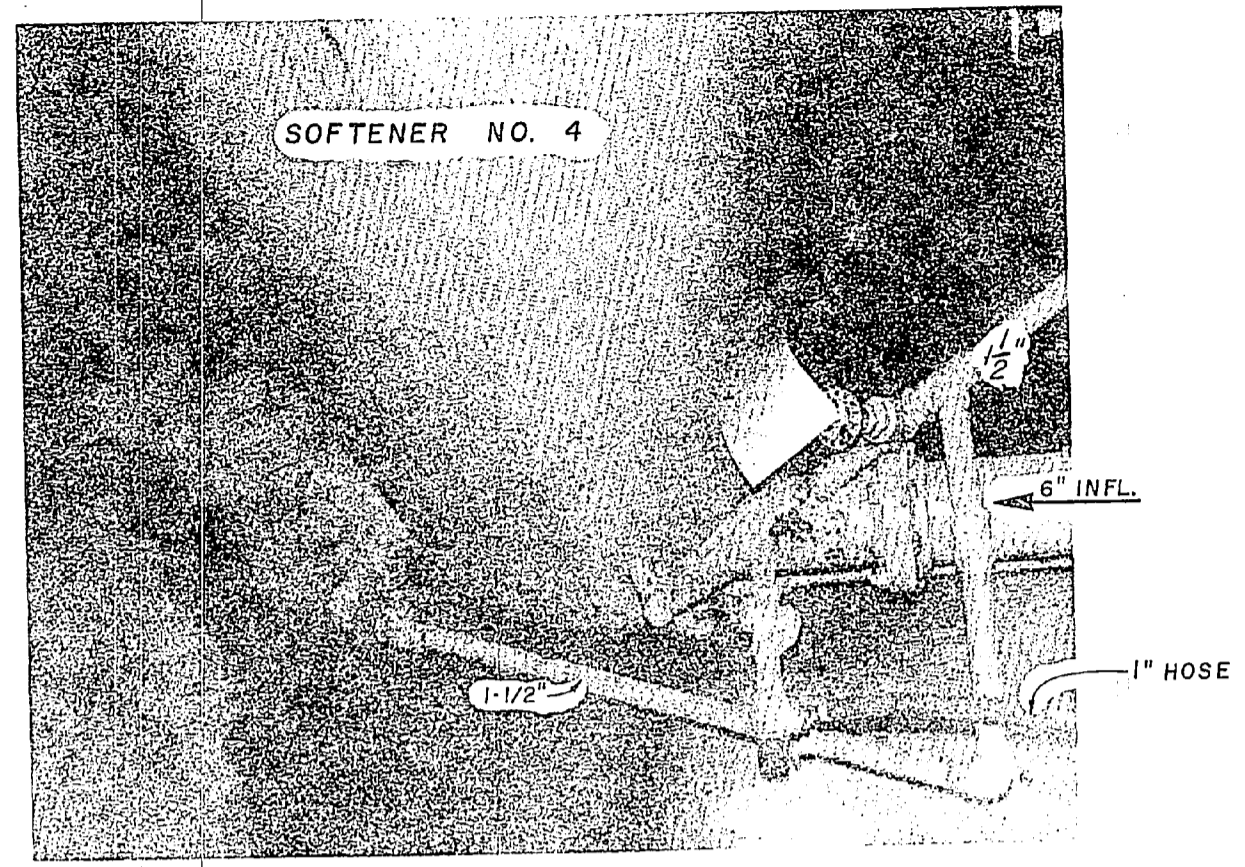
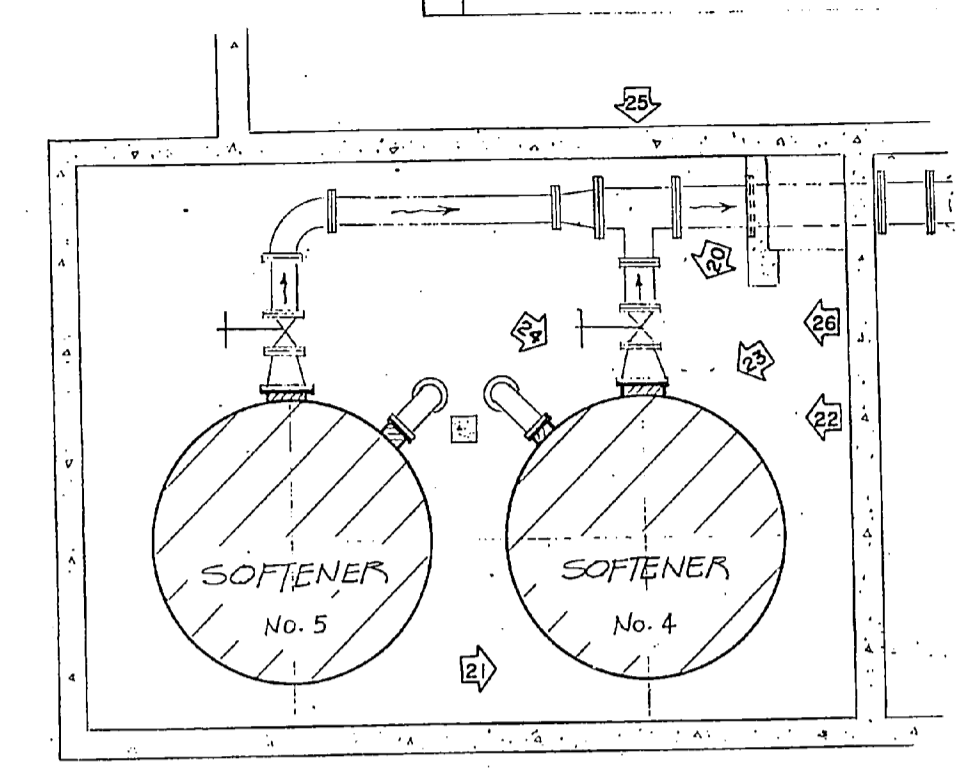


PHOTO NO. 23



LOCATION PLAN

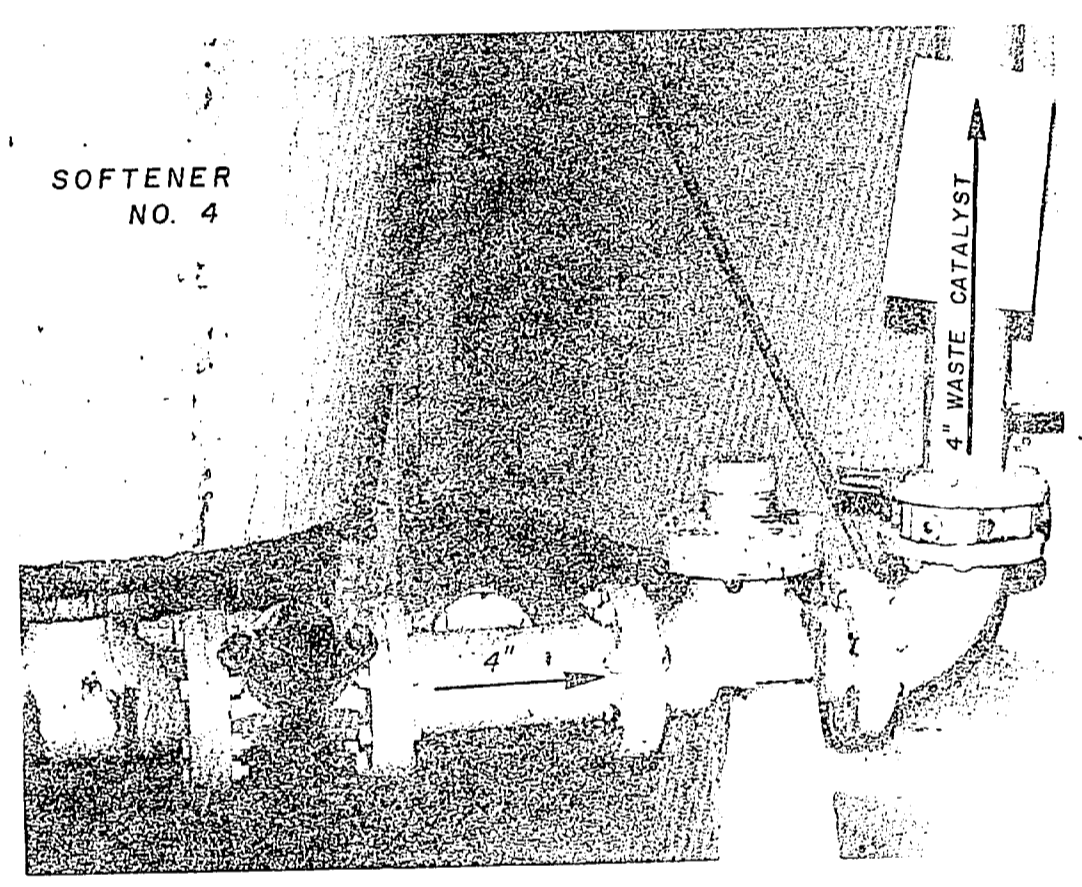


PHOTO NO. 21

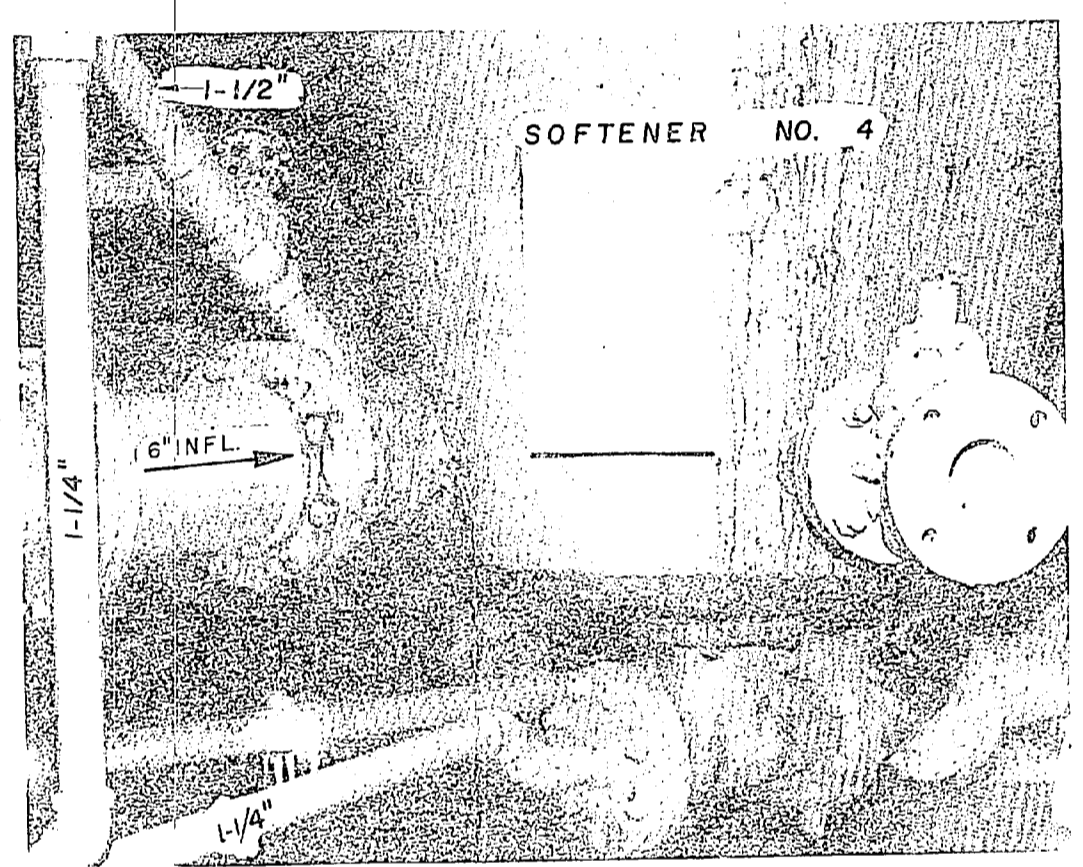


PHOTO NO. 24

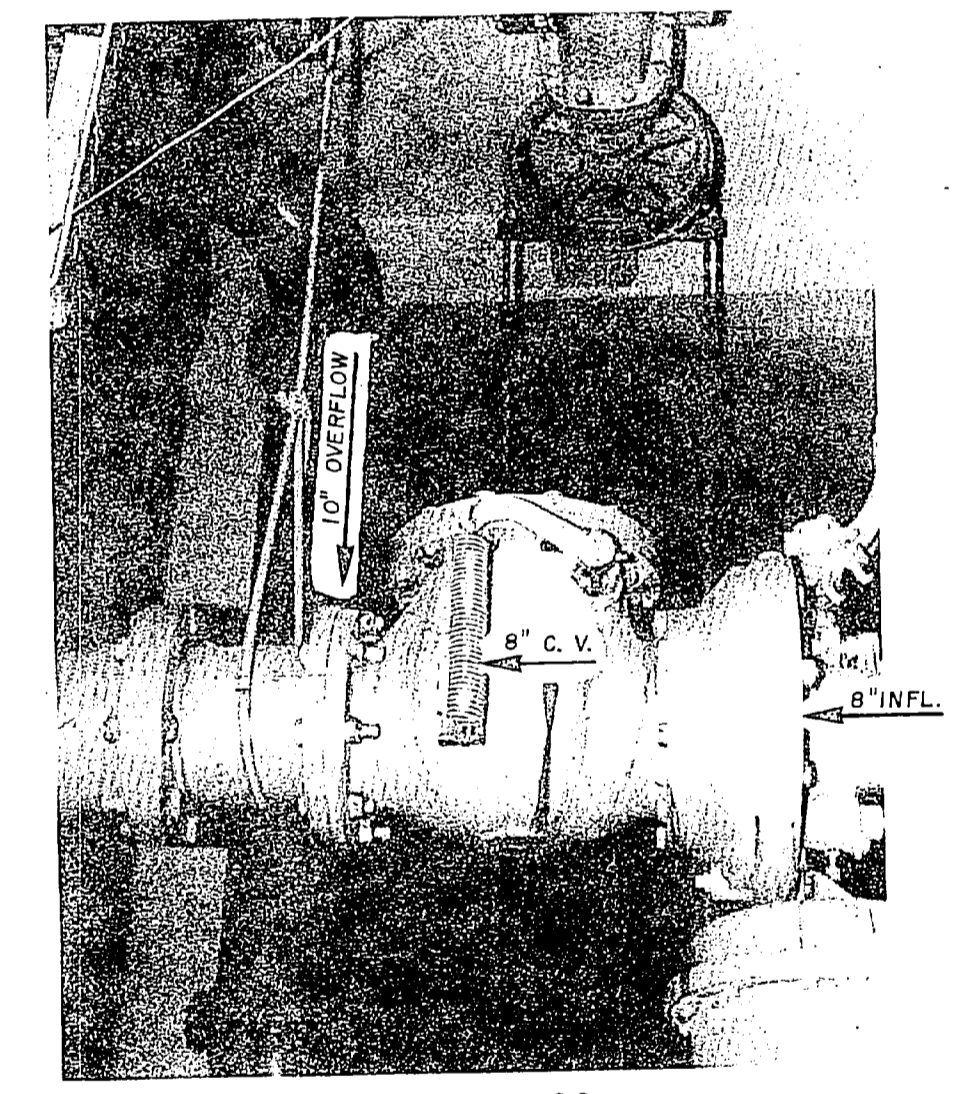


PHOTO NO. 26

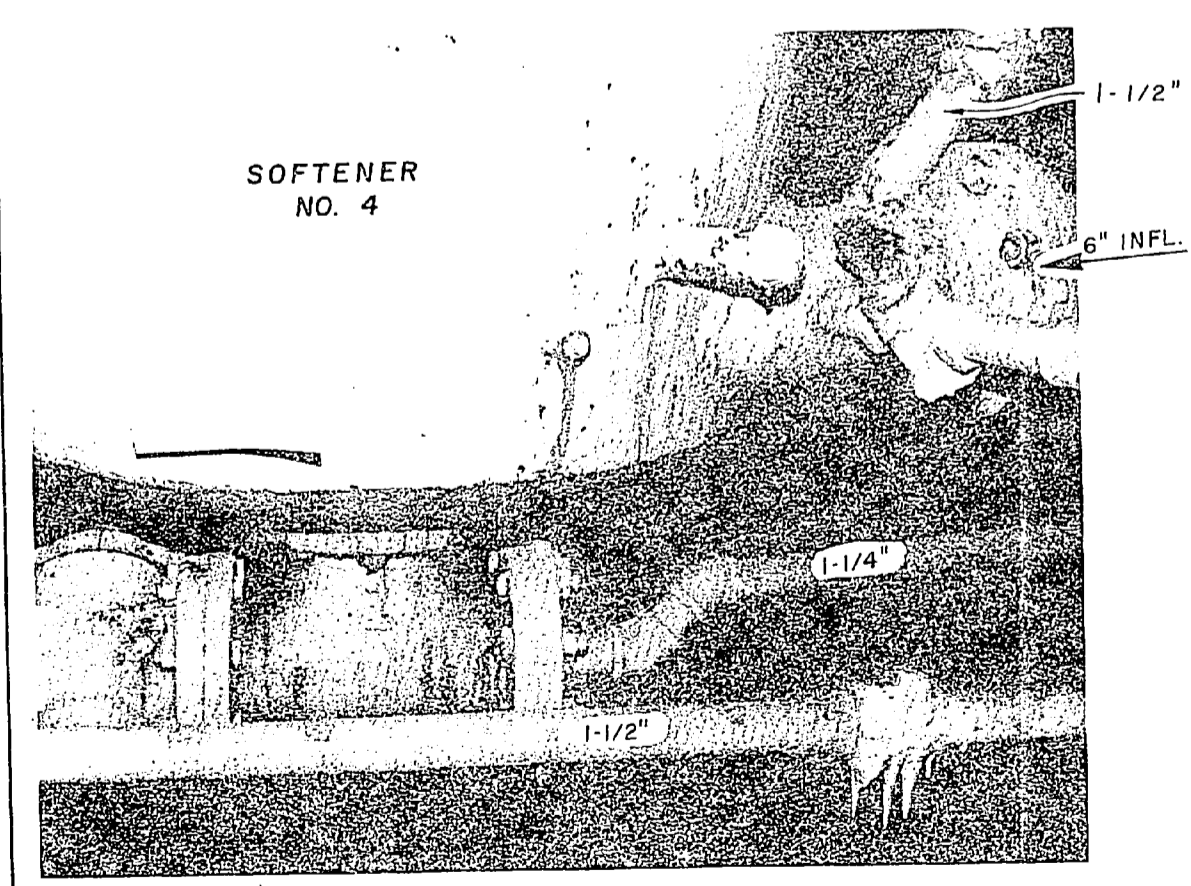


PHOTO NO. 22

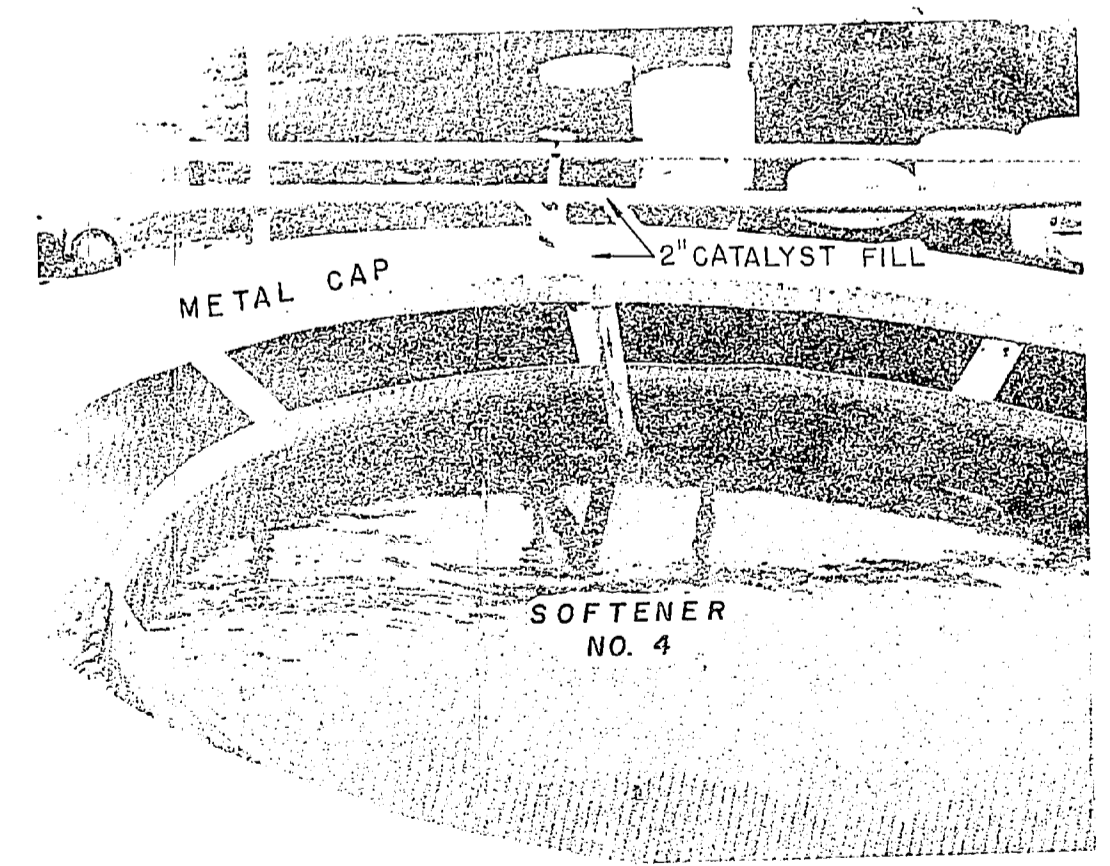
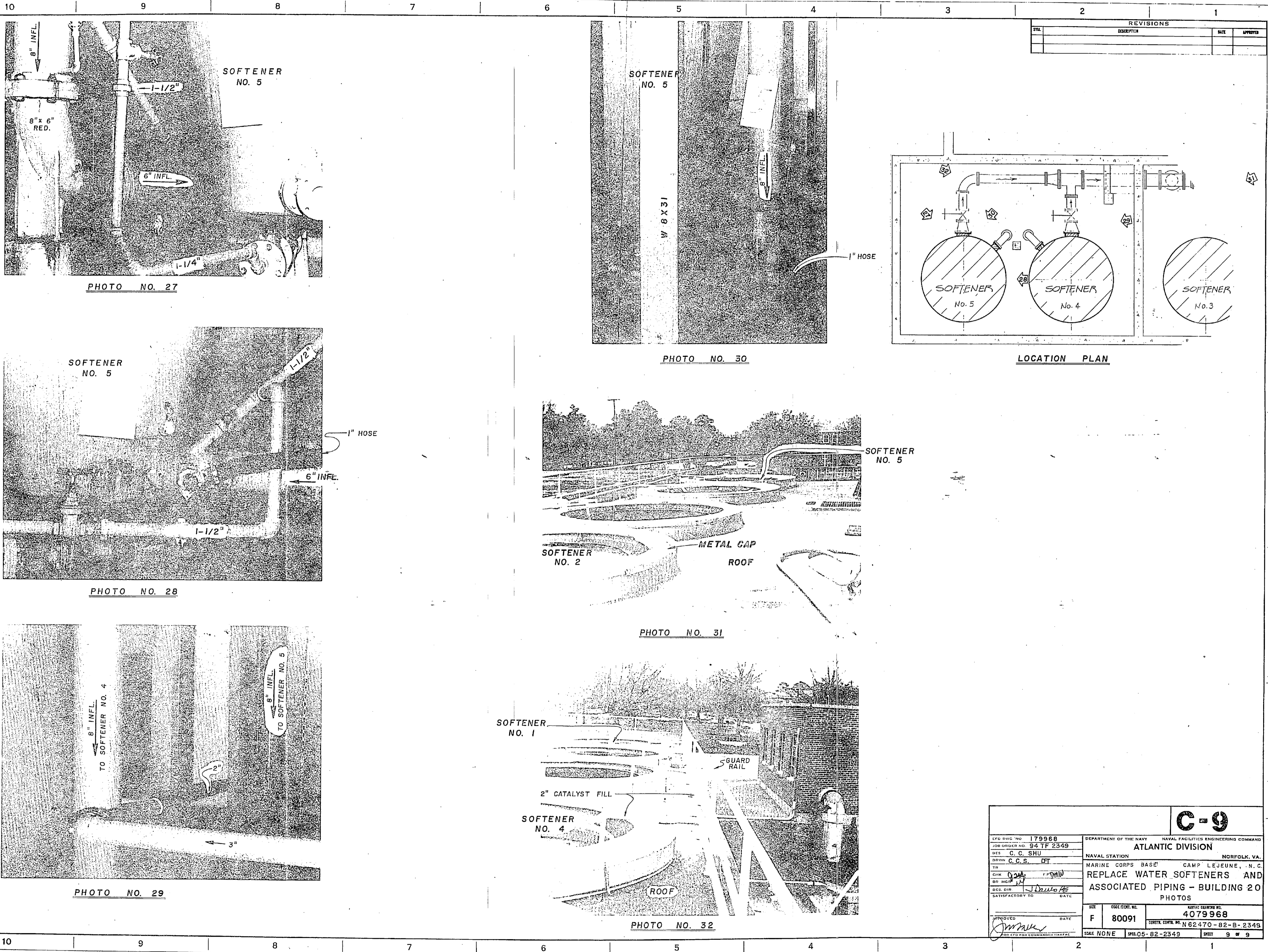


PHOTO NO. 25

<p>C-8</p>	
<p>LEG. DWG. NO. 179967 JOB NUMBER 94 TF 2349 DES. C. C. SHU DRAWN C. C. S. / JET CHK. J. J. / J. J. DES. DIV. J. J. / J. J. SATISFACTORY TO: _____ DATE: _____</p>	<p>DEPARTMENT OF THE NAVY NAVAL FACILITIES ENGINEERING COMMAND ATLANTIC DIVISION NAVAL STATION NORFOLK, VA. MARINE CORPS BASE CAMP LEJEUNE, N. C. REPLACE WATER SOFTENERS AND ASSOCIATED PIPING - BUILDING 20 PHOTOS</p>
<p>APPROVED: _____ DATE: _____ FOR THE COMMANDING OFFICER</p>	<p>SIZE: F LOGS BOOK NO. 80091 NUTIC DRAWING NO. 4079967 CONTROL CENTER NO. N62470-82-B-2349 SCALE: NONE SPEC. 05-82-2349 SHEET 8 OF 9</p>





REVISIONS		
NO.	DESCRIPTION	DATE

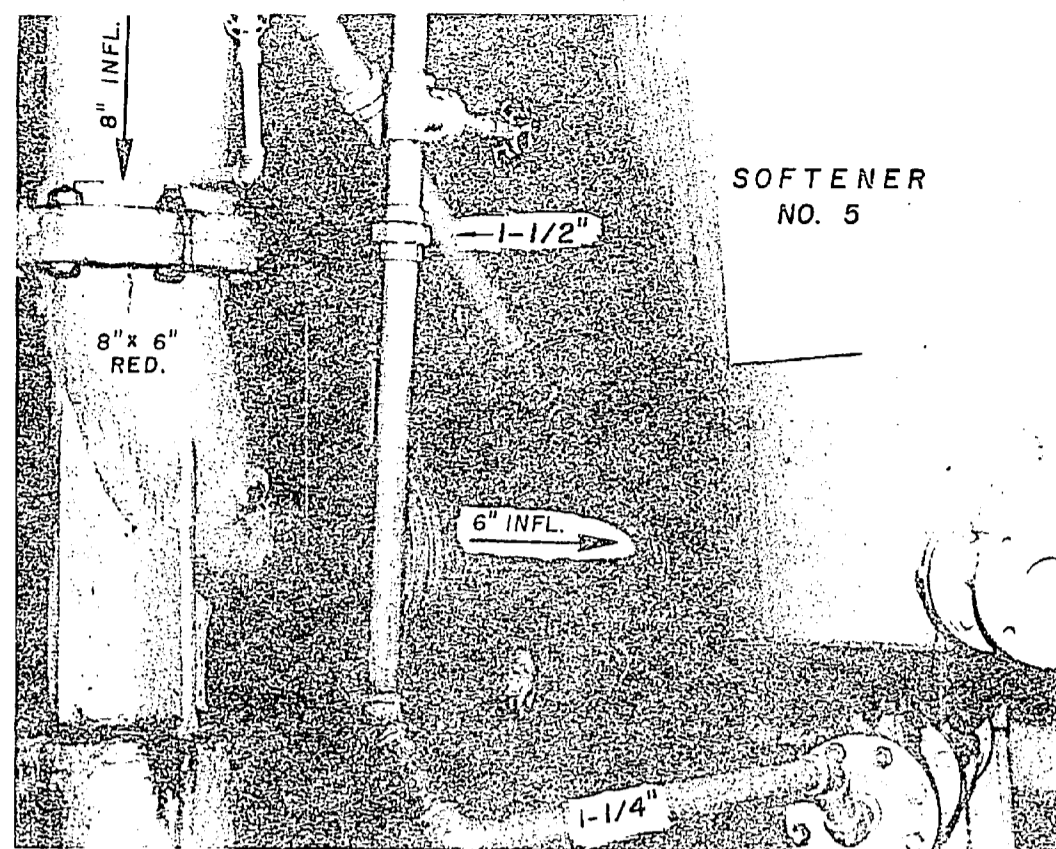


PHOTO NO. 27

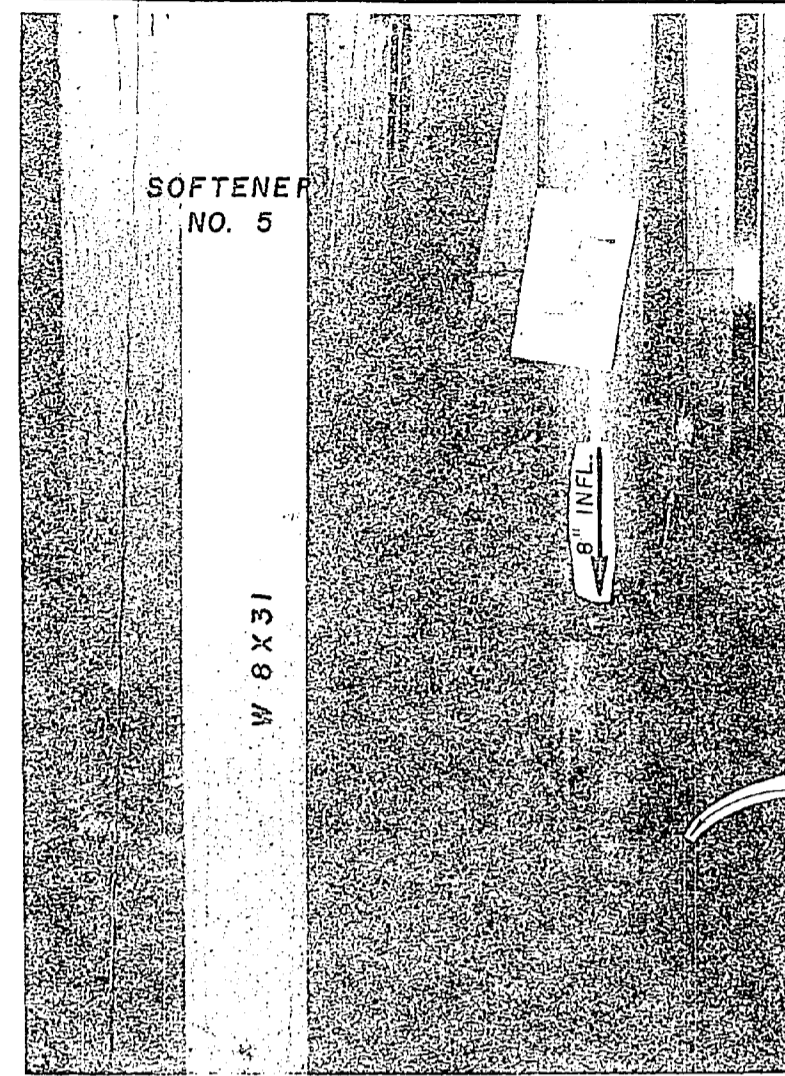
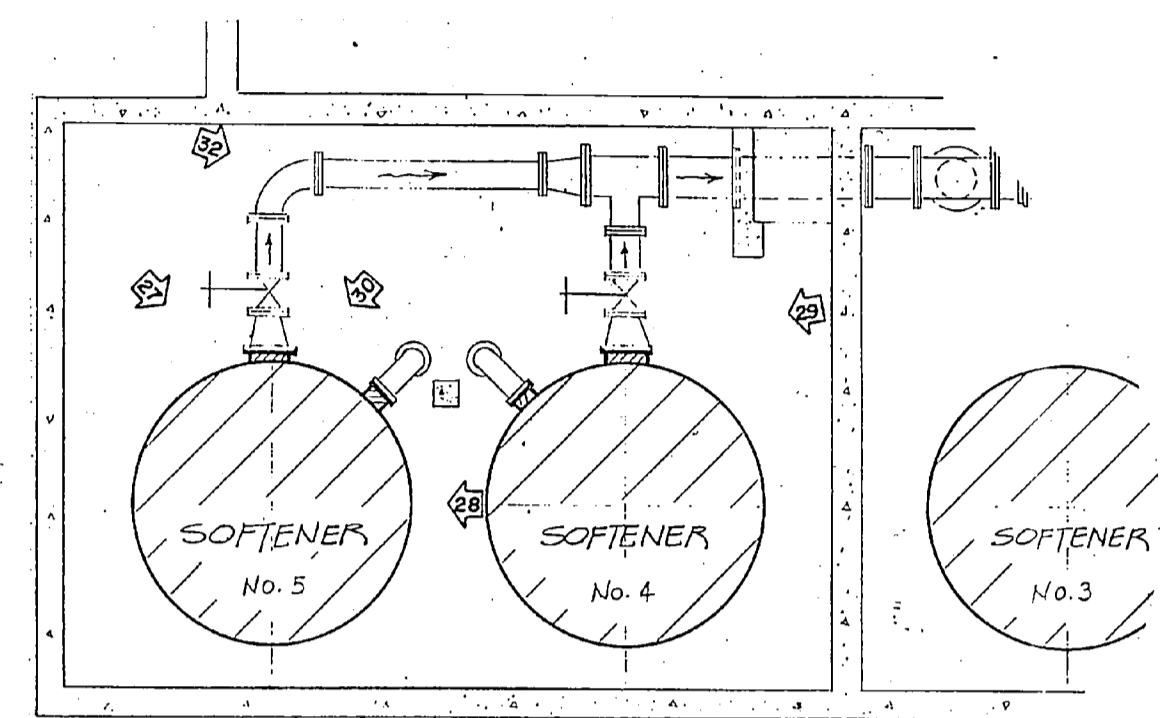


PHOTO NO. 30



LOCATION PLAN

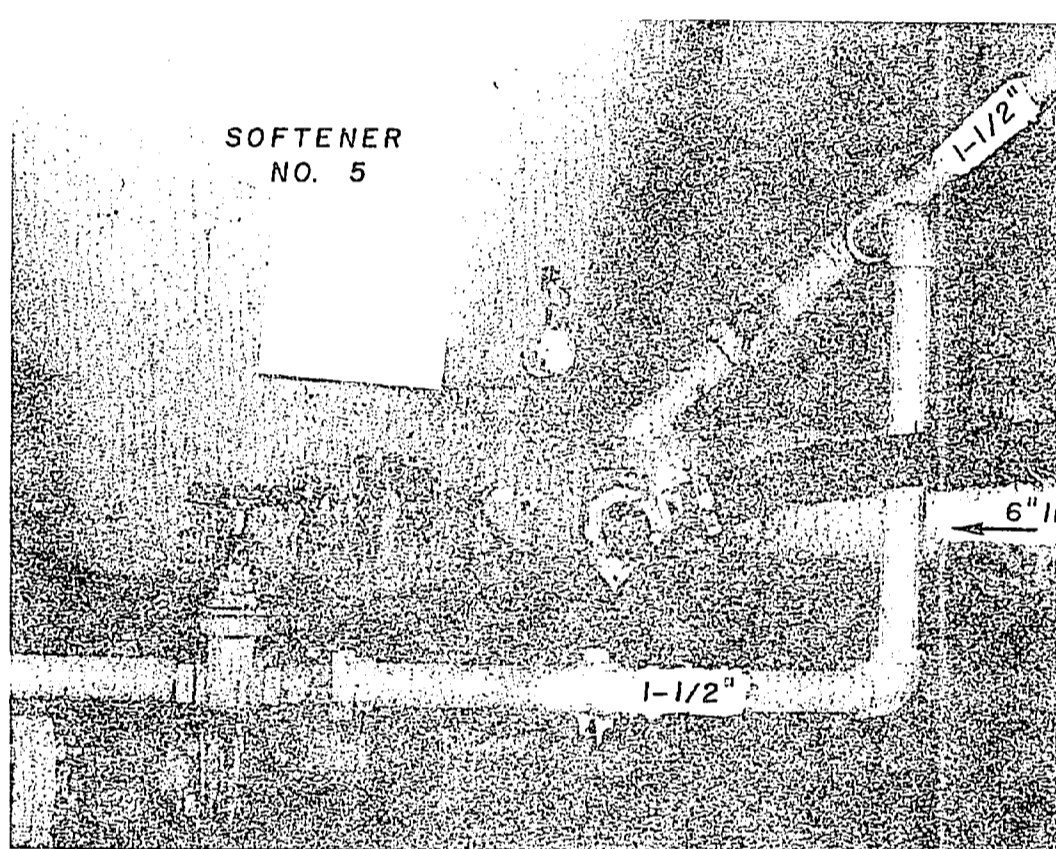


PHOTO NO. 28

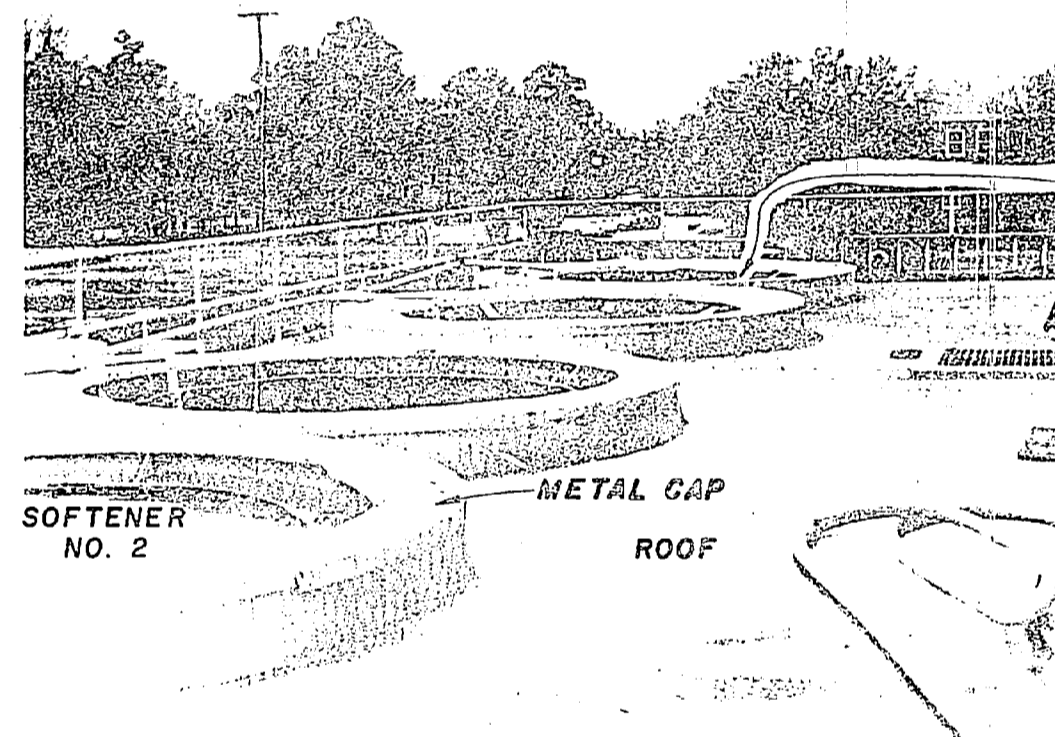


PHOTO NO. 31

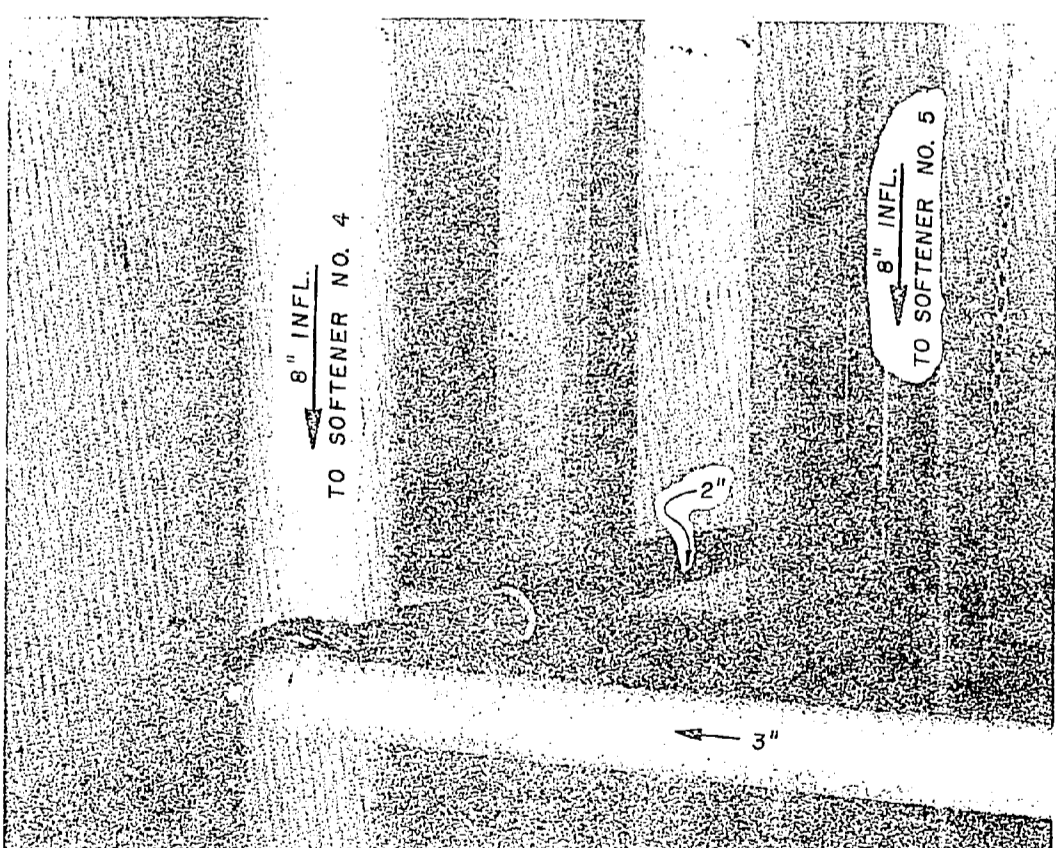


PHOTO NO. 29

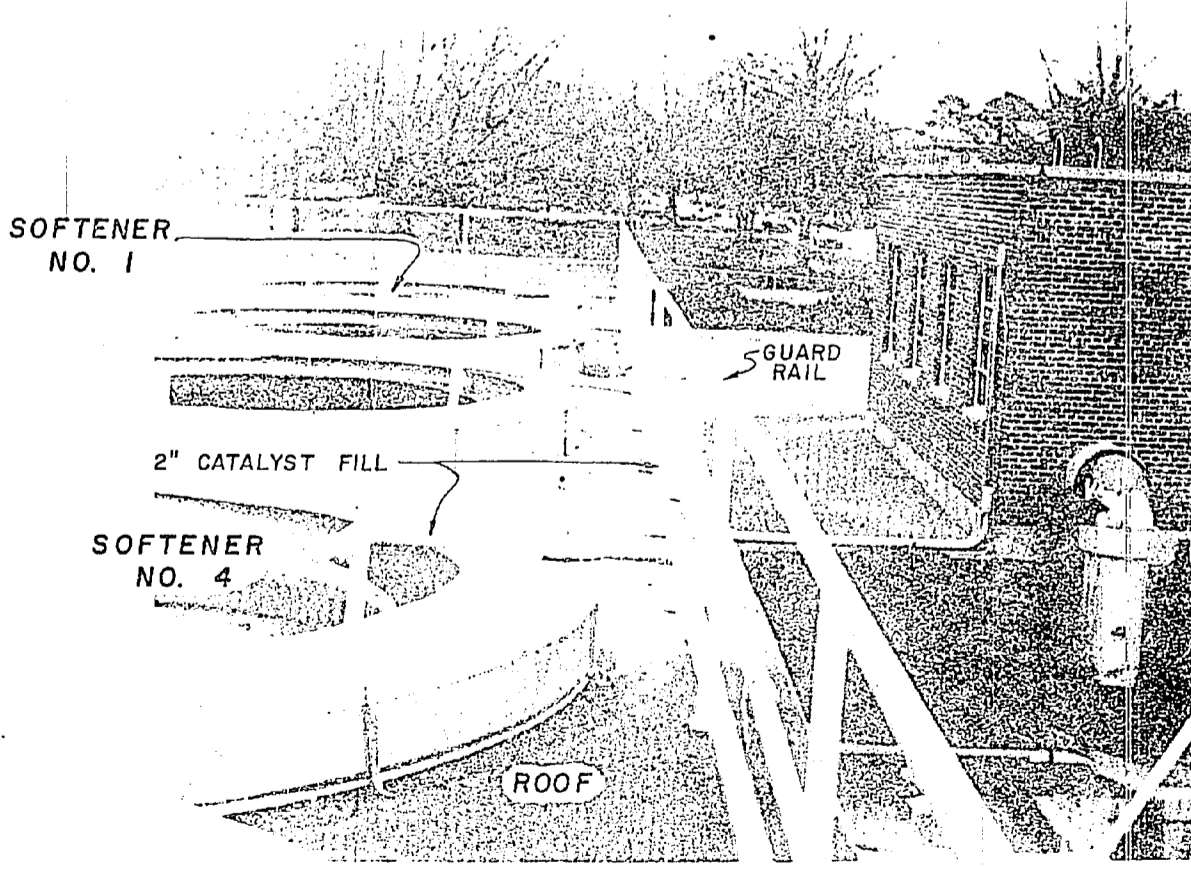


PHOTO NO. 32

EFC DIV. NO. 179968 JOB ORDER NO. 94 TF 2349 DES. C. G. SHU DRAWN C. G. S. CHK. [Signature] DES. DIR. [Signature]	DEPARTMENT OF THE NAVY NAVAL FACILITIES ENGINEERING COMMAND ATLANTIC DIVISION NAVAL STATION NORFOLK, VA. MARINE CORPS BASE CAMP LEJEUNE, N. C. REPLACE WATER SOFTENERS AND ASSOCIATED PIPING - BUILDING 20 PHOTOS
SIZE F CODE DIST. NO. 80091 DATE [Signature]	NAVY DRAWING NO. 4079968 CONSTR. CENTER NO. N62470-82-B-2349 SCALE NONE SHEET 9 OF 9

