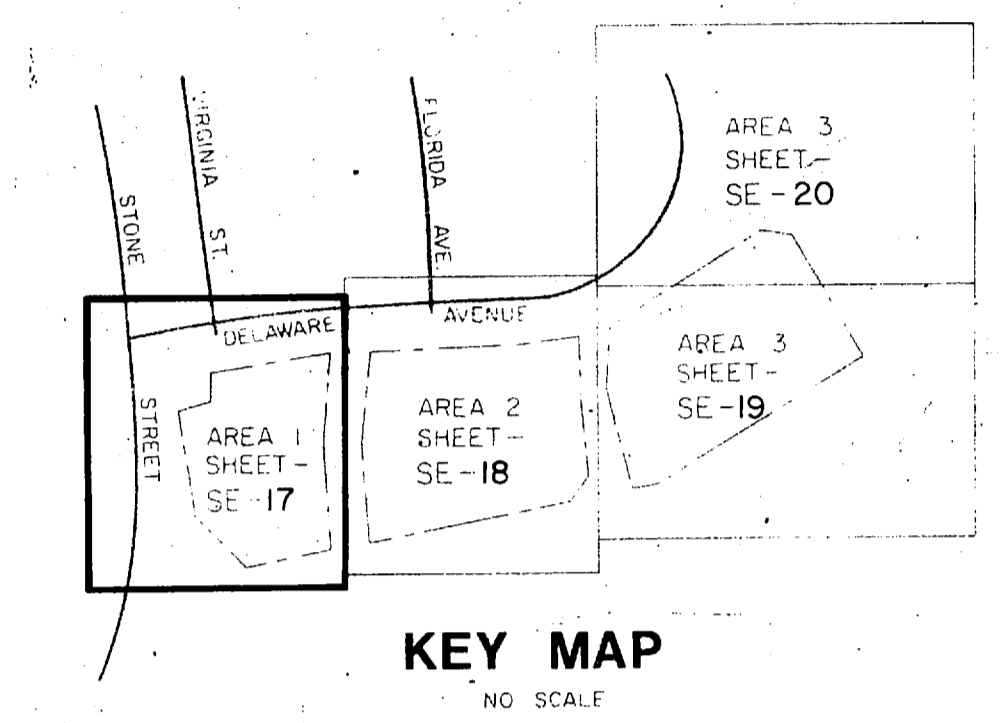
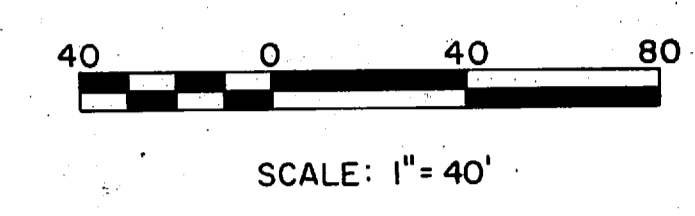


REVISIONS			
SYM	DESCRIPTION	DATE	APPROVED
1	As BUILT	1/18/78	



LEGEND

SYMBOL	DESCRIPTION
WATER	
— W 8" —	PROPOSED WATER MAIN, SIZE AS INDICATED
- - - W 10" - - -	EXISTING WATER MAIN, SIZE AS INDICATED
— W 8" —	PROPOSED WATER SERVICE
— W 8" —	PROPOSED WATER VALVE
— W 8" —	EXISTING WATER VALVE
— W 8" —	PROPOSED FIRE HYDRANT WITH VALVE
— W 8" —	PROPOSED YARD HYDRANT
— W 8" —	EXISTING GROUND CONTOURS
SANITARY SEWERS	
— SAN. S. —	PROPOSED SANITARY SEWER 8" UNLESS OTHERWISE NOTED
- - - SAN. S. 10" - - -	EXISTING SANITARY SEWER
— SAN. S. —	PROPOSED 6" SANITARY SEWER SERVICE
— SAN. S. —	EXISTING SANITARY SEWER MANHOLE
— SAN. S. —	PROPOSED SANITARY SEWER MANHOLE
— SAN. S. —	PROPOSED SANITARY CLEANOUT
— SAN. S. —	PROPOSED SANITARY SEWER ENCASED IN CONCRETE

GENERAL NOTES

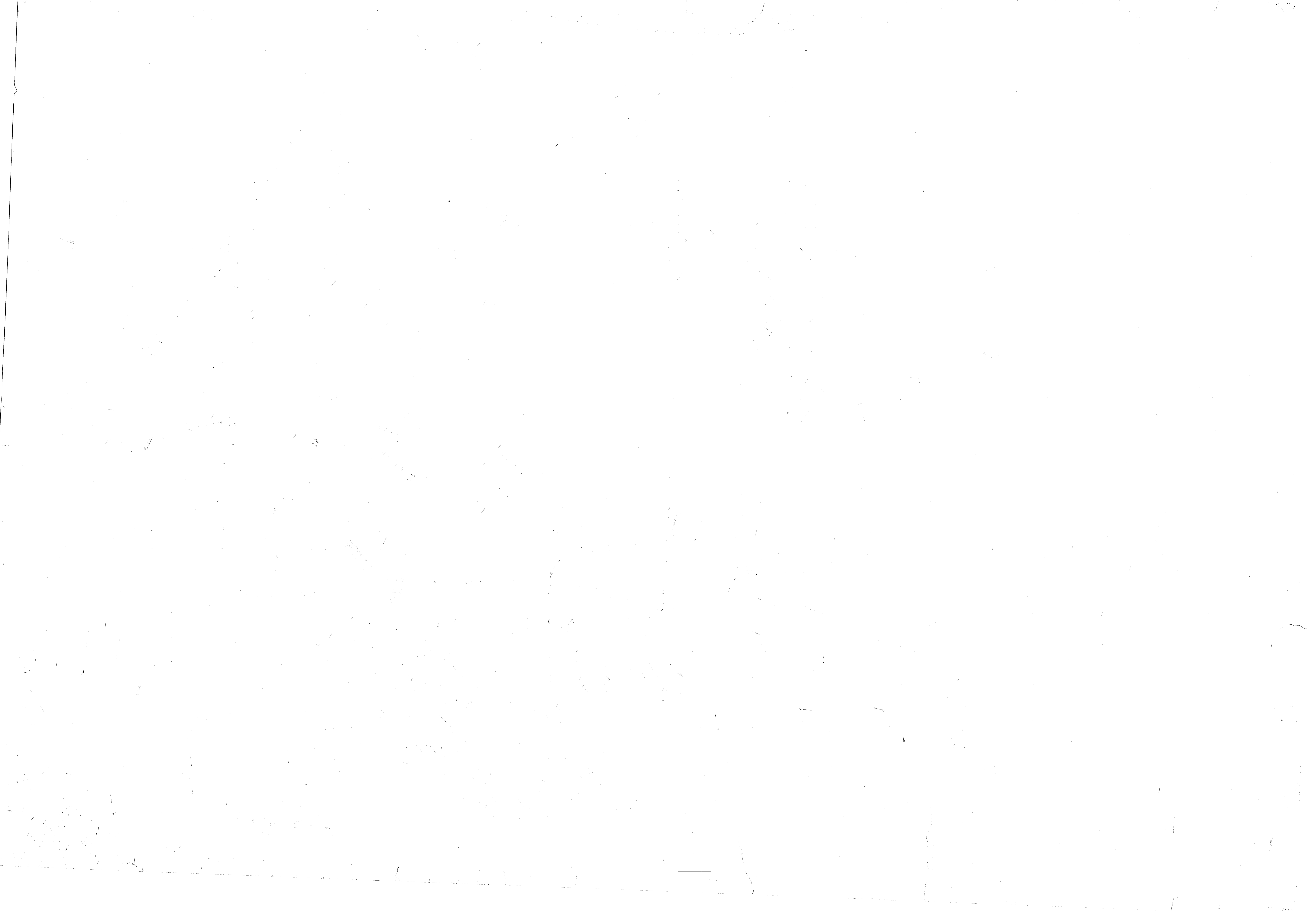
- | | |
|--|---|
| <p>WATER</p> <ol style="list-style-type: none"> SEE SHEET SE-1 FOR BUILDING TYPE IDENTIFICATION. SEE SHEETS SE-28 THROUGH SE-31 FOR SITE DETAILS. ALL WATER MAINS TO BE AS NOTED: MINIMUM 8 INCH DIAMETER. WATER SERVICE LINES SHALL BE:
2 UNITS - 1 1/2 INCH
4 UNITS - 2 INCH FIRE HYDRANTS SHALL MATCH THOSE PRESENTLY IN USE. MASTER METER SHALL BE PROVIDED. SEE DETAIL ON SHEET SE-31. WATER MAINS AND WATER SERVICES SHALL HAVE A MINIMUM COVER OF 3'-6" | <p>SANITARY SEWERS</p> <ol style="list-style-type: none"> SEE SHEET SE-1 FOR BUILDING TYPE IDENTIFICATION. SEE SHEETS SE-28 THROUGH SE-31 FOR SITE DETAILS. ALL SANITARY SEWERS TO BE 8", UNLESS OTHERWISE NOTED. ALL MANHOLE FRAMES AND LIDS TO BE ADJUSTED TO MATCH FINISH GRADE. ALL BUILDING SERVICE LINES ARE 6" AT A MINIMUM SLOPE OF 1%. CLEANOUTS SHALL BE PROVIDED AS SHOWN. WATER AND SEWER SERVICES SHOWN ONLY TO ENTRANCE OF BUILDINGS. SEE ARCHITECTURAL SHEETS FOR PLUMBING. SANITARY SEWERS SHALL BE ENCASED IN CONCRETE AT LOCATIONS WHERE THE SANITARY SEWER CROSSES OVER THE WATER MAIN. |
|--|---|

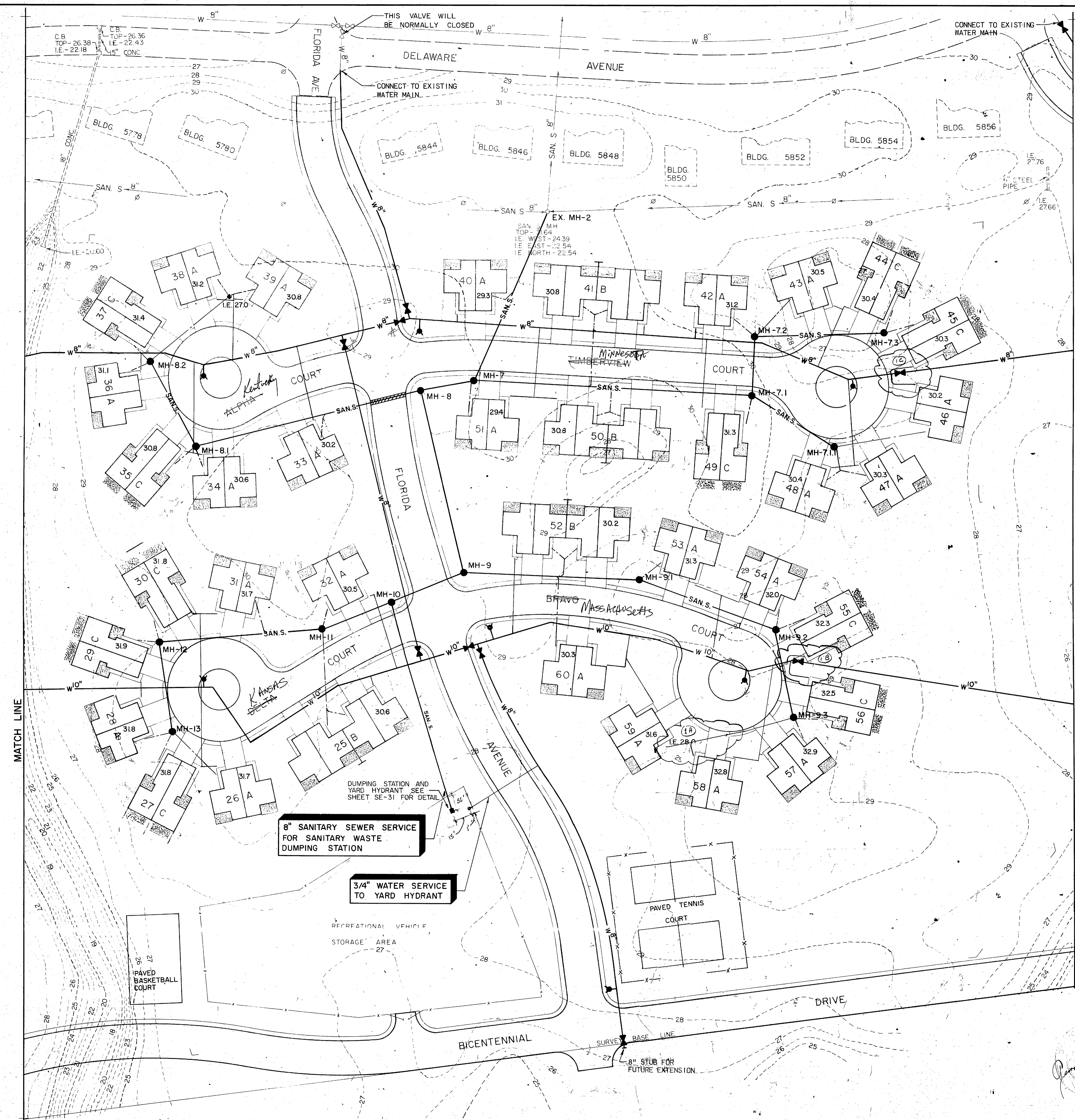


KELSEY AND ASSOCIATES CONTRACTOR 400 BROADWAY BOISE, IDAHO 83729		DEPARTMENT OF THE NAVY ATLANTIC DIVISION NAVAL STATION NORFOLK, VIRGINIA	
SODEMANN AND ASSOCIATES, INC. ENGINEERS ARCHITECTS PLANNERS DES. JPF DR. RB CHK. GLS PROJ. MGR. C.M. CH. ENGR. J.P.P. SUBMITTED BY: J.P.P. DATE: 1/11/78 FIRM MEMBER: J.P.P. PRINCIPAL		CAMP LE JEUNE, NORTH CAROLINA FY-76 250 FAMILY HOUSING UNITS SHEET TITLE:	
APPROVED: [Signature] DATE: 1/11/78 OFFICER IN CHARGE		WATER AND SANITARY SEWERS NAVFAC DRAWING NO. 4031786 F 80091 CONSTR. CONTR. NO. N82470-76-C-6279 SCALE: 1" = 40' SPEC. 05-76-6279 SHEET 66 OF 68	

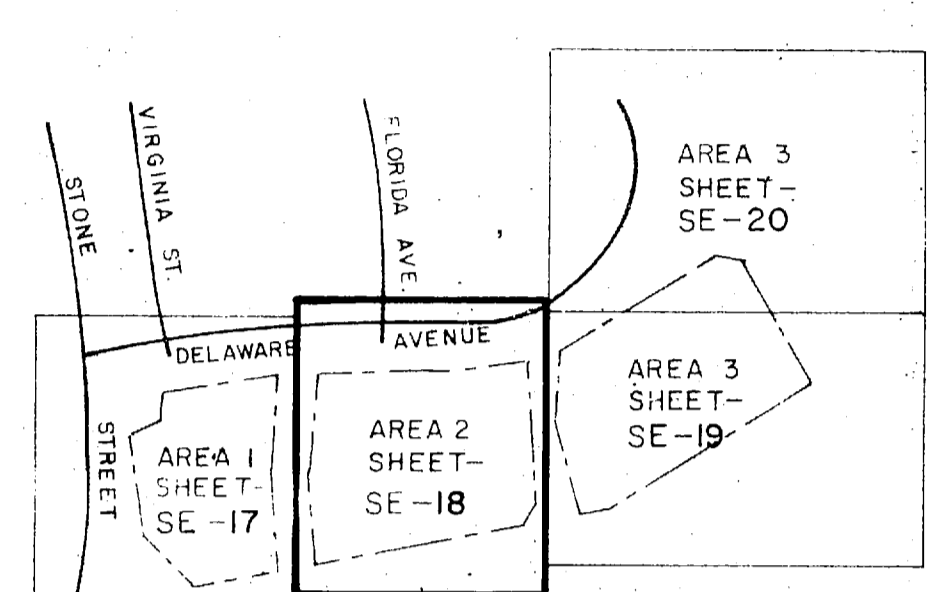
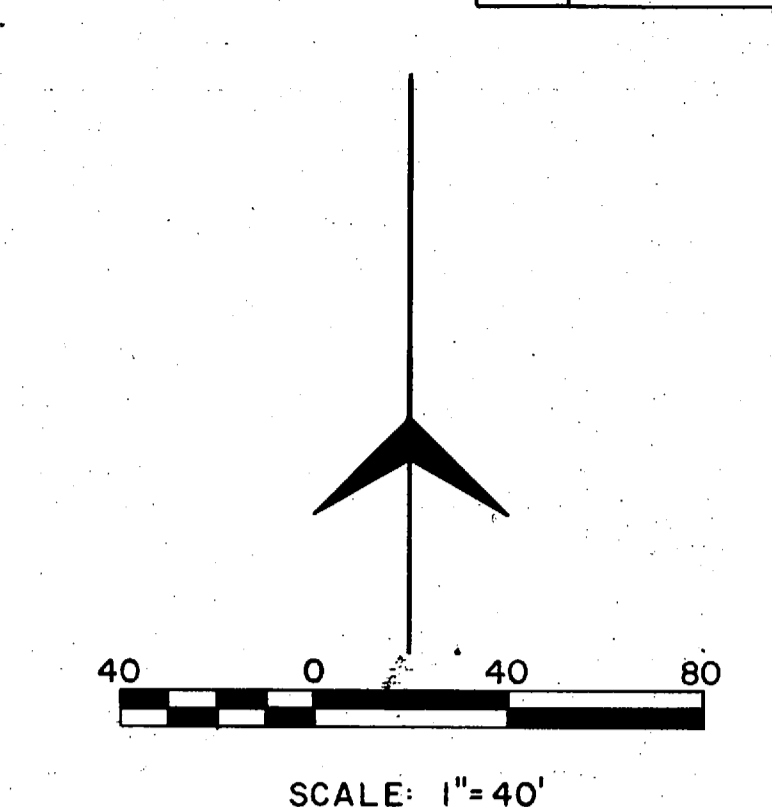
FOR CONSTRUCTION

SE-17





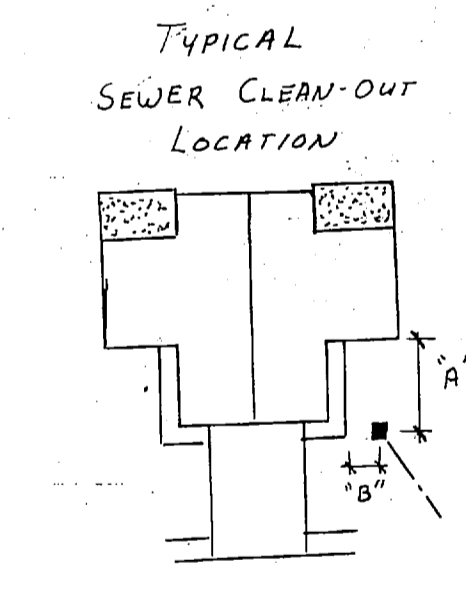
REVISIONS			
SYM	DESCRIPTION	DATE	APPROVED
1	As Built	1/28/76	



KEY MAP
NO SCALE

SEE SHEET SE-17 FOR LEGEND AND GENERAL NOTES

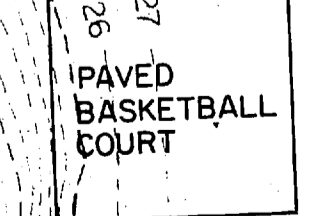
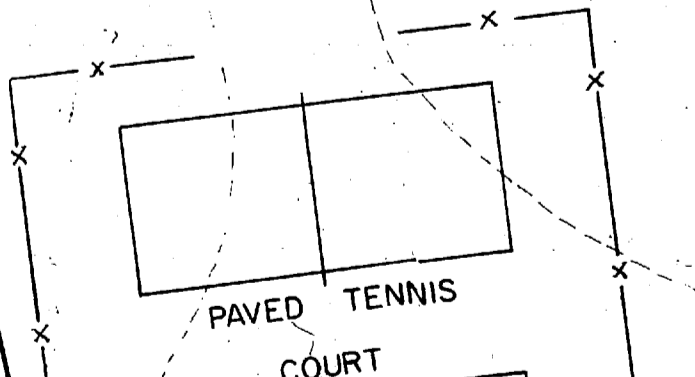
SEWER CLEAN-OUT LOCATION				
Bldg. No.	Building Address	"A" (ft.)	"B" (ft.)	
1	5900	C & D	3.0	0.5
2	5900	A & B	3.0	1.3
3	5910	C & D	2.8	1.5
4	5910	A & B	2.7	1.3
5	5920	C & D	3.3	2.0
6	5920	A & B	3.2	2.5
7	5930	C & D	24.0	1.8
8	5930	A & B	23.2	1.5
9	5940	C & D	23.7	1.5
10	5940	A & B	23.5	1.0
11	5950	C & D	4.9	1.2
12	5950	A & B	5.6	7.7
13	5960	C & D	4.5	0.8
14	5960	A & B	4.3	1.0
15	5970	C & D	2.5	1.3
16	5970	A & B	2.0	1.3
17	5980	C & D	23.5	2.7
18	5980	A & B	15.3	0.8
19	5973	A & B	31.3	2.0
20	5969	A & B	9.6	1.4
21	5965	C & D	12.0	0.5
22	5965	A & B	14.3	1.1
23	5959	C & D	33.3	2.0
24	5959	A & B	35.0	2.6
25	5955	C & D	34.0	2.0
26	5955	A & B	34.3	2.0
27	5949	C & D	2.7	1.3
28	5949	A & B	2.7	1.0
29	5941	C & D	14.3	2.0
30	5941	A & B	15.2	1.8
31	5935	A & B	15.2	0.7
32	5931	A & B	15.0	1.1
33	5927	A & B	20.6	0.3
34	5923	A & B	18.2	1.2
35	5915	C & D	6.2	1.5
36	5915	A & B	6.7	2.0
37	5907	C & D	33.8	2.0
38	5907	A & B	33.5	1.7
39	5901	C & D	14.8	1.0
40	5901	A & B	14.0	0.7
41	6000	C & D	9.4	0.3
42	6000	A & B	12.5	0.8
43	6008	A & B	14.7	1.0
44	6012	A & B	23.6	0.5
45	6020	A & B	24.7	0.8
46	6024	A & B	24.7	1.2
47	6036	A & B	27.1	1.0
48	6042	A & B	13.4	1.1
49	6048	A & B	9.7	0.5
50	6054	A & B	10.4	0.5
51	6058	A & B	26.0	1.0
52	6062	A & B	20.7	2.3
53	6066	A & B	21.7	1.3
54	6076	A & B	39.9	2.8
55	6080	A & B	8.2	1.2
56	6084	A & B	15.2	1.0
57	6097	A & B	10.6	1.4
58	6093	A & B	15.2	0.6
59	6093	A & B	15.1	1.3
60	6087	A & B	13.5	1.6
61	6083	A & B	16.0	1.8
62	6081	A & B	34.9	0.8
63	6071	A & B	36.7	2.7
64	6069	A & B	12.5	1.4
65	6061	A & B	18.0	1.0
66	6059	A & B	14.0	1.0
67	6055	A & B	36.0	2.6
68	6051	C & D	13.3	1.5
69	6051	A & B	14.2	1.2
70	6049	A & B	12.7	1.3
71	6039	A & B	12.3	1.2
72	6038	A & B	10.9	0.8
73	6038	A & B	17.0	0.6
74	6031	A & B	13.6	0.4
75	6027	A & B	31.0	2.4
76	6023	A & B	28.3	3.0
77	6019	A & B	14.0	1.5
78	6013	A & B	11.2	1.5
79	6009	A & B	17.0	2.0
80	6003	A & B	12.4	1.7
81	6100	A & B	16.0	11.7
82	6108	A & B	20.9	2.3
83	6112	A & B	15.4	2.9
84	6116	A & B	18.9	6.0
85	6126	A & B	12.3	6.6
86	6130	A & B	10.9	4.5
87	6140	A & B	16.0	2.7
88	6144	A & B	19.9	0.8
89	6148	A & B	11.7	5.8
90	6152	A & B	18.5	4.0
91	6156	A & B	12.0	6.0
92	6162	A & B	12.9	3.3
93	6164	A & B	14.0	0.7
94	6168	A & B	11.6	5.4
95	6170	A & B	13.7	5.2
96	6174	A & B	16.0	0.9
97	6178	A & B	9.7	3.4
98	6180	A & B	11.5	5.9
99	6184	A & B	10.9	3.0
100	6186	A & B	11.3	2.0
101	6194	A & B	14.0	4.0
102	6196	A & B	13.0	5.0
103	6195	A & B	12.0	2.2
104	6193	A & B	9.5	3.5
105	6189	A & B	12.5	3.8
106	6185	A & B	13.1	2.8
107	6181	A & B	13.2	2.2
108	6177	A & B	9.6	3.0
109	6173	A & B	0.4	7.7
110	6171	A & B	12.1	2.1
111	6169	A & B	7.3	4.0
112	6167	A & B	9.2	3.2
113	6155	A & B	12.6	2.8
114	6153	A & B	10.4	3.8
115	6149	A & B	14.3	4.7
116	6145	A & B	13.0	1.2
117	6141	A & B	11.0	3.2
118	6137	A & B	13.2	1.7
119	6127	A & B	17.3	2.7
120	6123	A & B	5.4	2.6
121	6119	A & B	8.8	3.7
122	6115	A & B	15.0	1.6
123	6111	A & B	13.2	1.3
124	6107	A & B	12.0	1.1
125	6103	A & B	10.9	6.2



8" SANITARY SEWER SERVICE FOR SANITARY WASTE DUMPING STATION

3/4" WATER SERVICE TO YARD HYDRANT

RECREATIONAL VEHICLE STORAGE AREA



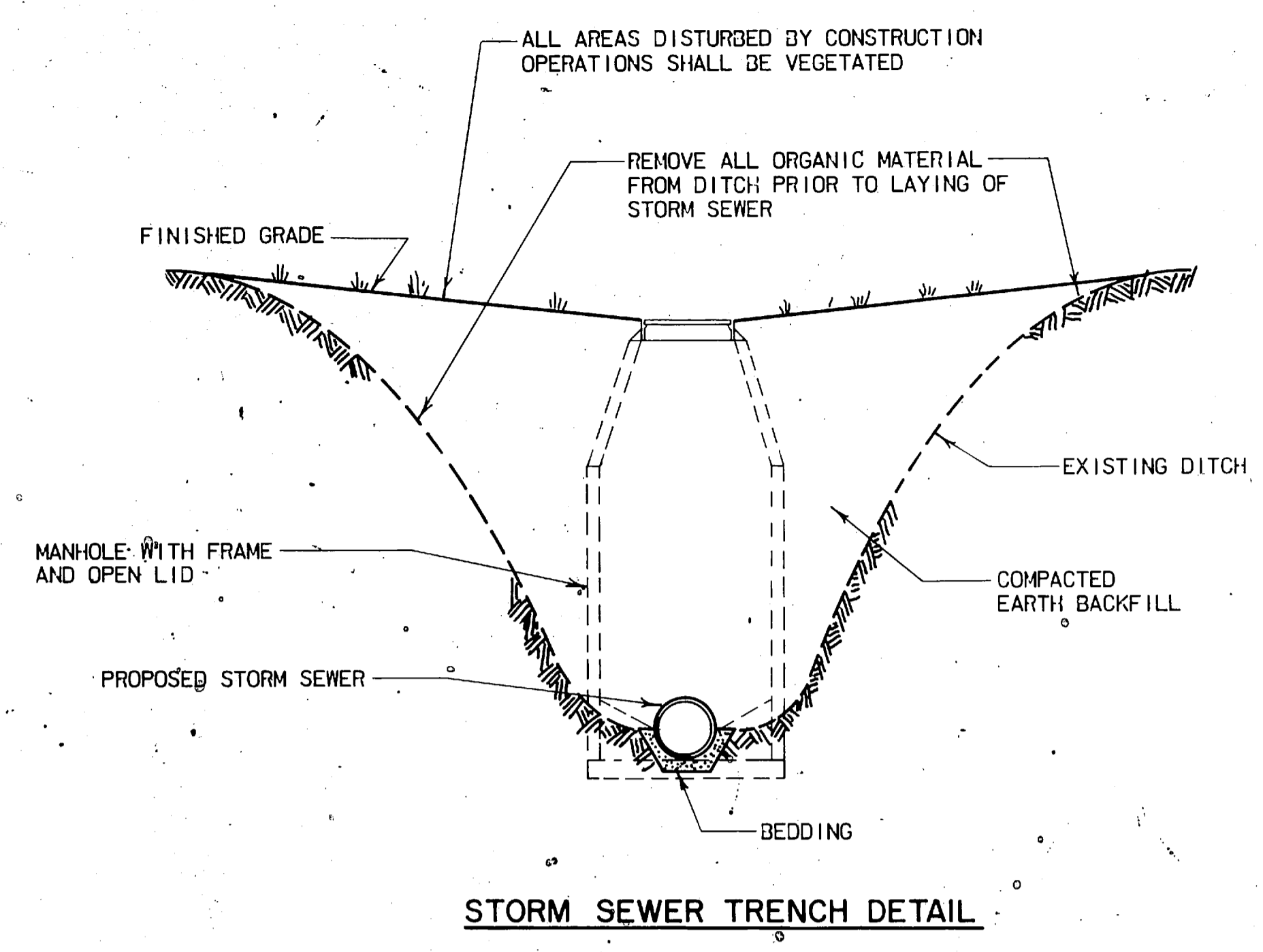
FOR CONSTRUCTION

SE-18

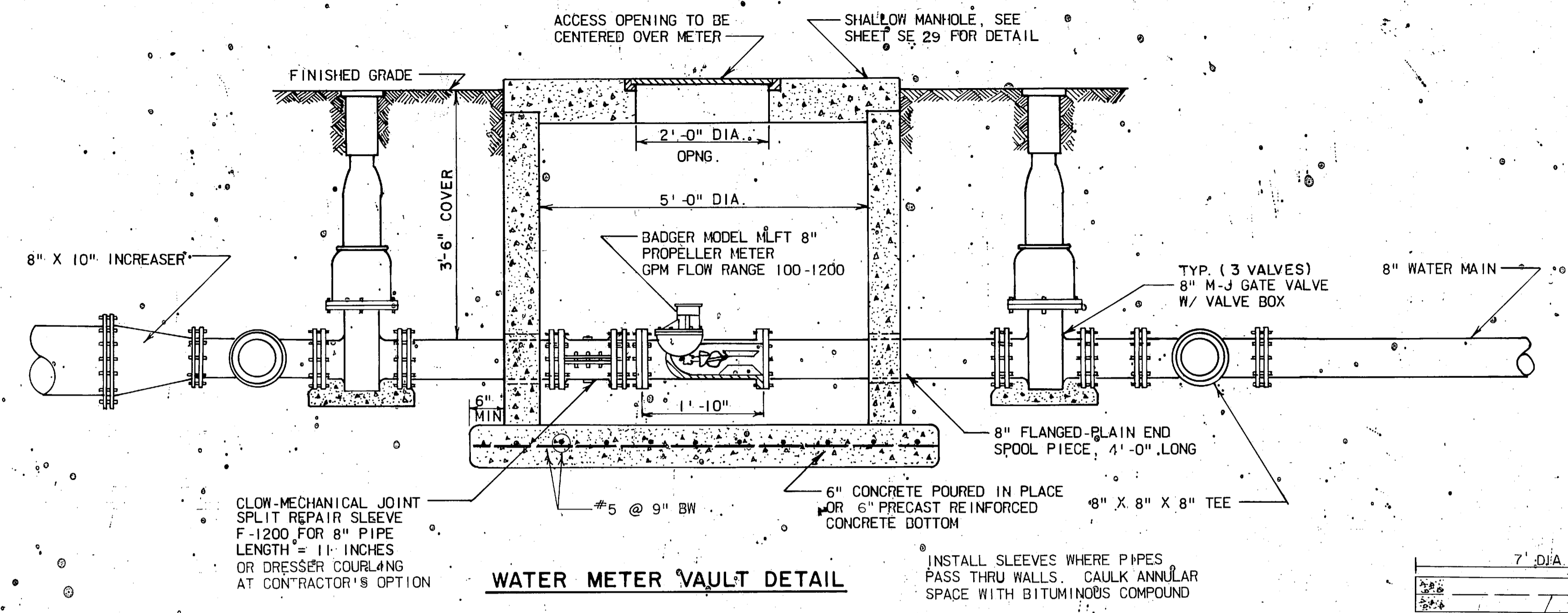
KELSEY AND ASSOCIATES 400 BROADWAY BOISE, IDAHO 83729 ENGINEERS		DEPARTMENT OF THE NAVY NAVAL FACILITIES ENGINEERING COMMAND ATLANTIC DIVISION NAVAL STATION NORFOLK, VIRGINIA	
SODEMANN AND ASSOCIATES, INC. ENGINEERS PLANNERS		CAMP LEJEUNE, NORTH CAROLINA FY-76 250 FAMILY HOUSING UNITS	
DES. JPF DR. RB CHK. GLS PRO. MGR. CEM/CH/ENG/ J.P.P. SUBMITTED BY DATE 11/17/76 FILE MEMBER RVD PRINCIPAL HD. DIR.		WATER AND SANITARY SEWERS SHEET TITLE NAVFAC DRAWING NO. 4031787 CONSTR. CONTR. NO. NG2470-76-C-6279-	
APPROVED DATE OFFICER IN CHARGE APPROVED DATE DEC 1976 FOR EFD FOR COMMANDER NAVFAC		SIZE CODE IDENT. NO. F 80091 SCALE 1"=40' SPEC. 05-76-6279 SHEET 67 OF 86	

REVISIONS		DATE	APP.
SYM	DESCRIPTION		

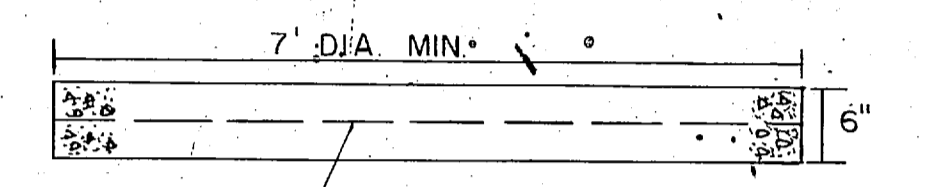
As Built No Change



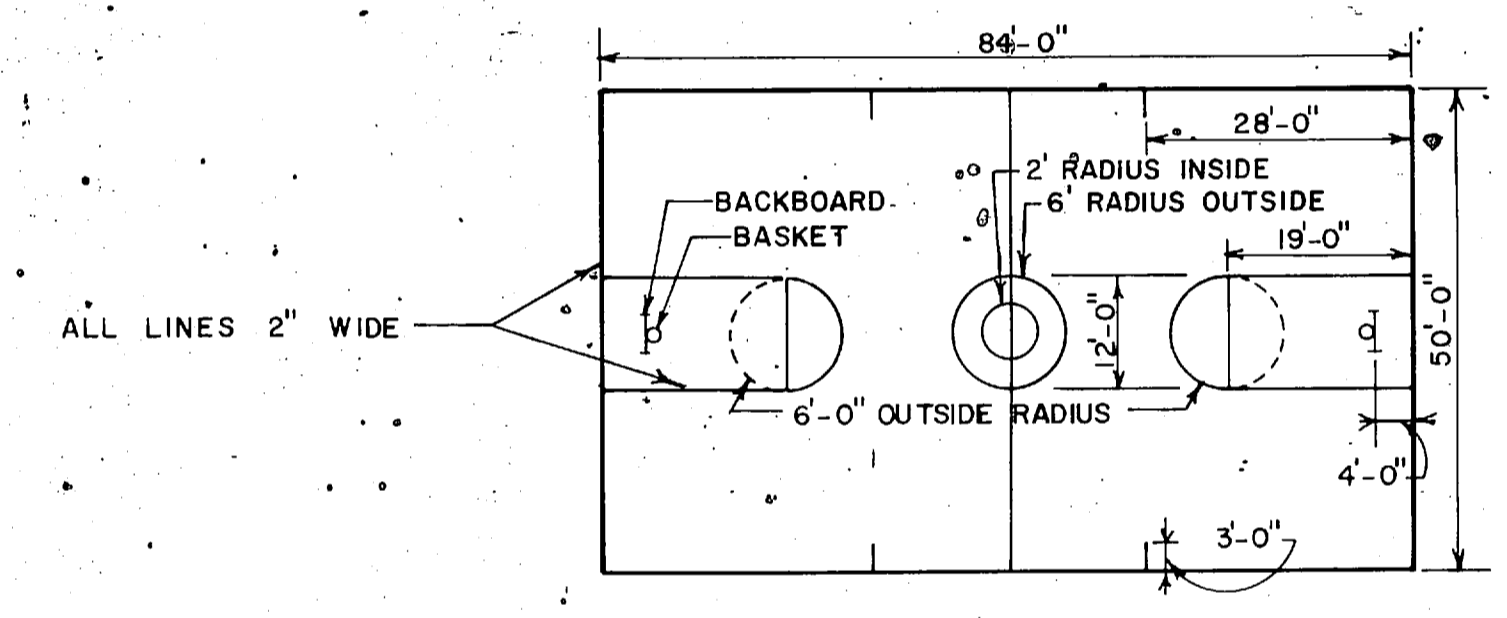
STORM SEWER TRENCH DETAIL



WATER METER VAULT DETAIL

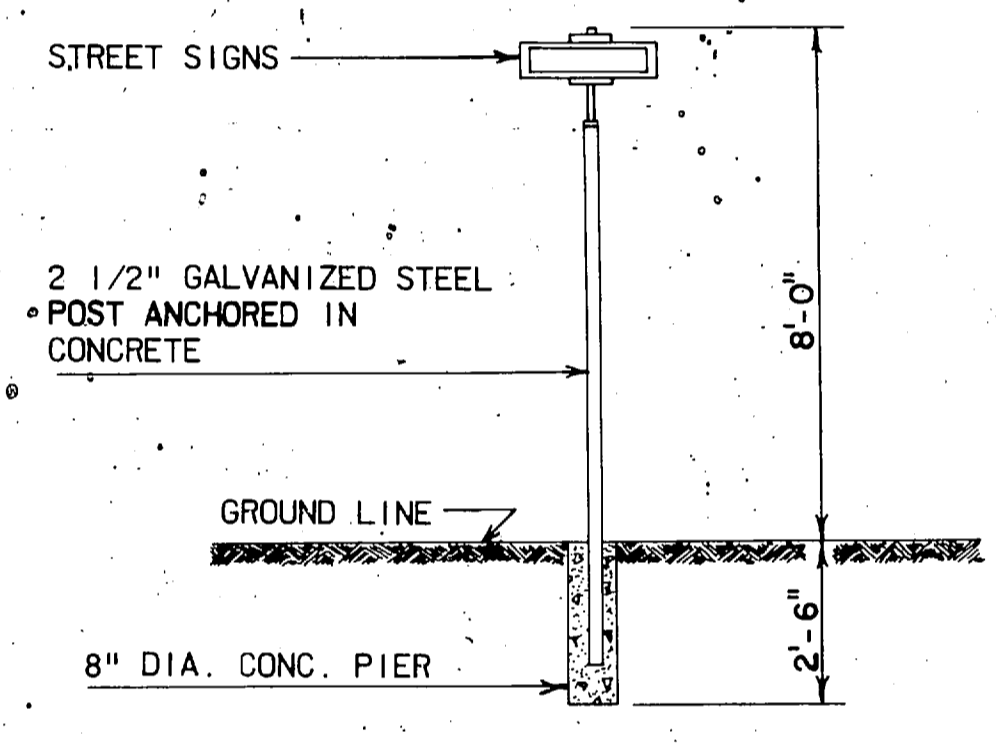


OPTIONAL PRECAST BOTTOM DETAIL



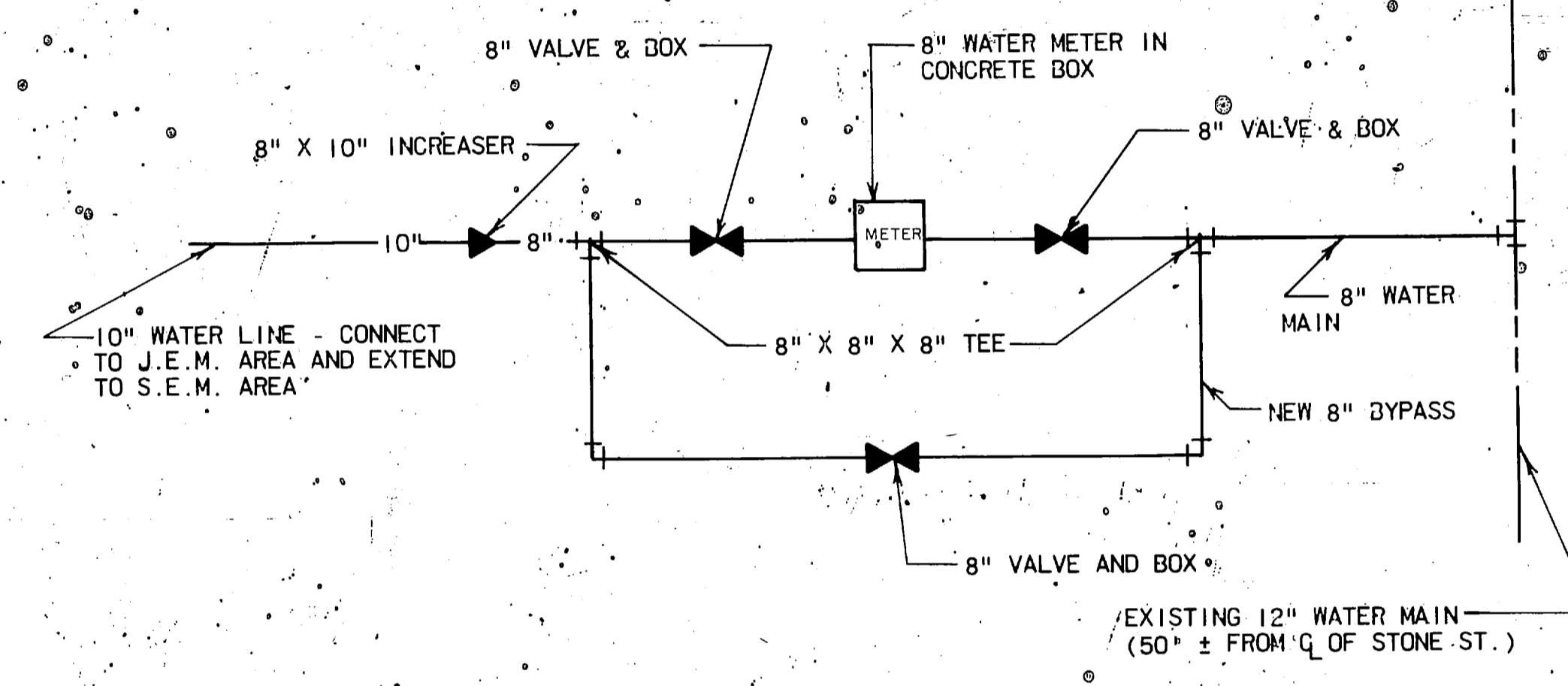
BASKETBALL COURT DETAIL

BASKETBALL COURT PAVEMENT:
 1" BITUMINOUS PLANT MIX SEAL COAT
 1 1/2" TYPE I-1 ASPHALTIC CONCRETE BITUMINOUS PRIME COAT
 6" COMPACTED SIZE NO. 7 CRUSHED STONE BASE COURSE
 SUB GRADE COMPACTED TO 95% DENSITY

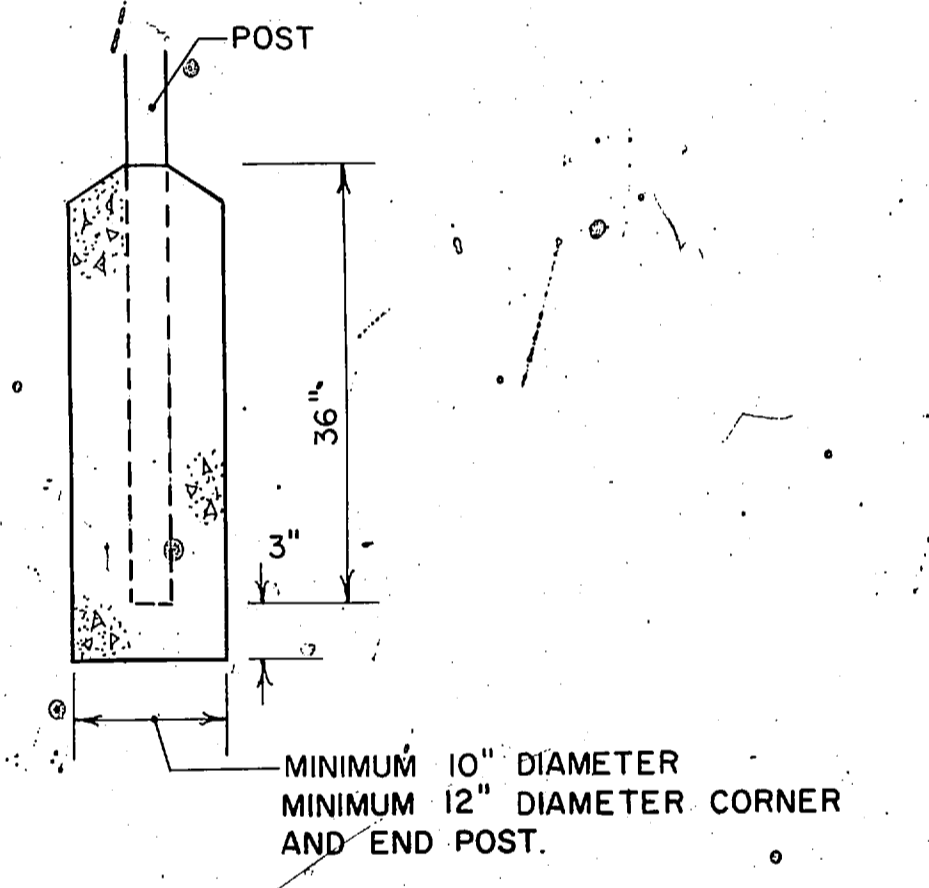


STREET SIGN DETAIL

NOTE:
 STREET NAME SIGNS, PLAIN. PLATES ARE 18 GAUGE-ZINC-COATED, BONDERIZED STEEL 6" HIGH BY 18" TO 32" LONG WITH 4" LETTERS. THREE COATS OF BAKED HIGH GLOSS ENAMEL. EMBOSSED IS 1/10" DEEP WITH WIDE ANGLE VISIBILITY. BRACKETS FOR STREET NAME SIGNS ARE ZINC-COATED, BONDERIZED STEEL WITH CADMIUM PLATED BOLTS AND NUTS. STEEL PARTS ARE RUST PROOFED AND FINISHED WITH ENAMEL. THE BASE SHALL FURNISH NAMES FOR THE STREET NAME SIGNS. STREET SIGN TO BE LOCATED 10' BACK OF CURB AT LOCATIONS SHOWN ON PLANS.

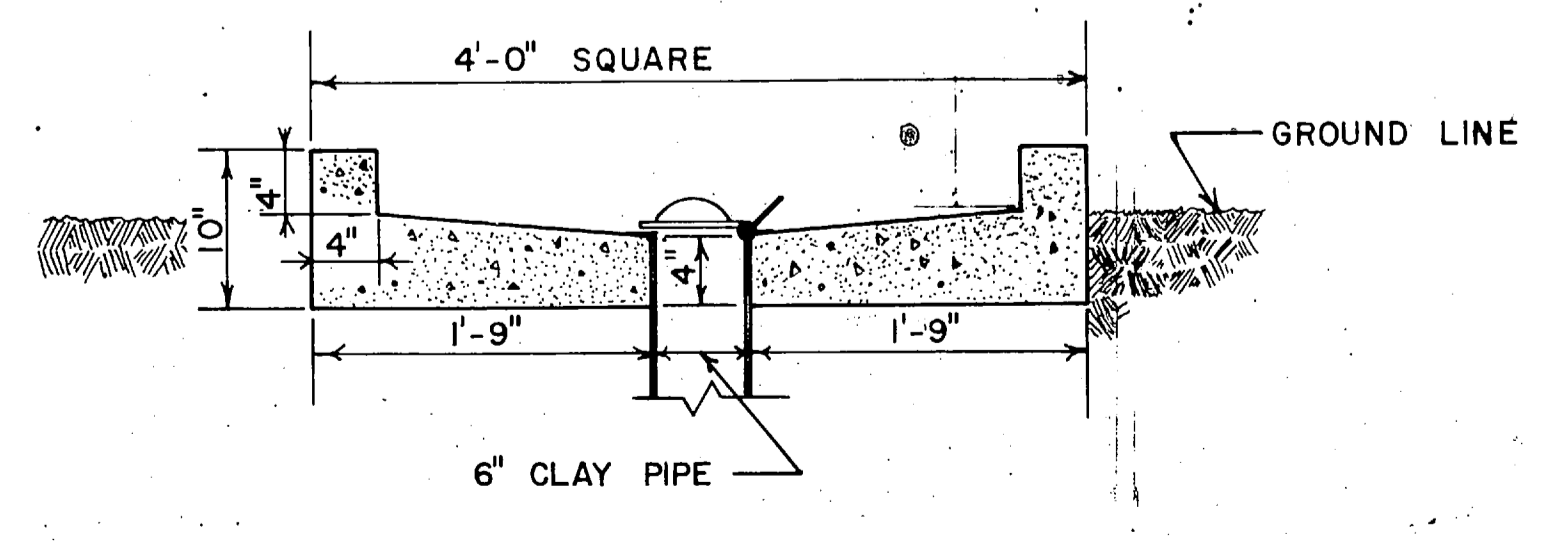


WATER MAIN BY-PASS SCHEME



POST ANCHORAGE DETAIL

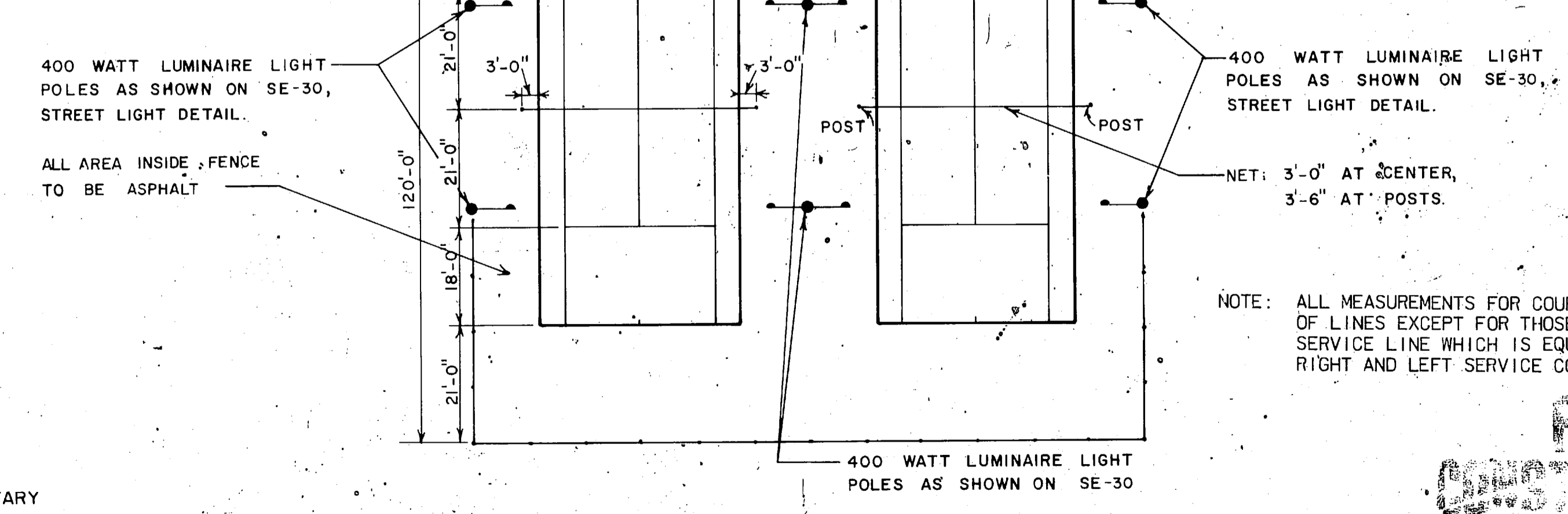
NOTE: SEE SHOP DRAWINGS FOR FENCE WIRE, FENCE HARDWARE, AND FENCE CONSTRUCTION DETAILS.



SANITARY WASTE DUMP DETAIL

NOTES:
 SEE SHEET SE-18 FOR LOCATION OF SANITARY WASTE DUMPING STATION
 SEE SHEET SE-29 FOR YARD HYDRANT DETAIL

TENNIS COURT PAVEMENT:
 1" BITUMINOUS PLANT MIX SEAL COAT
 1 1/2" TYPE I-1 ASPHALTIC CONCRETE BITUMINOUS PRIME COAT
 6" COMPACTED SIZE NO. 7 CRUSHED STONE BASE COURSE
 SUB GRADE COMPACTED TO 95% DENSITY



DOUBLE TENNIS COURT DETAIL

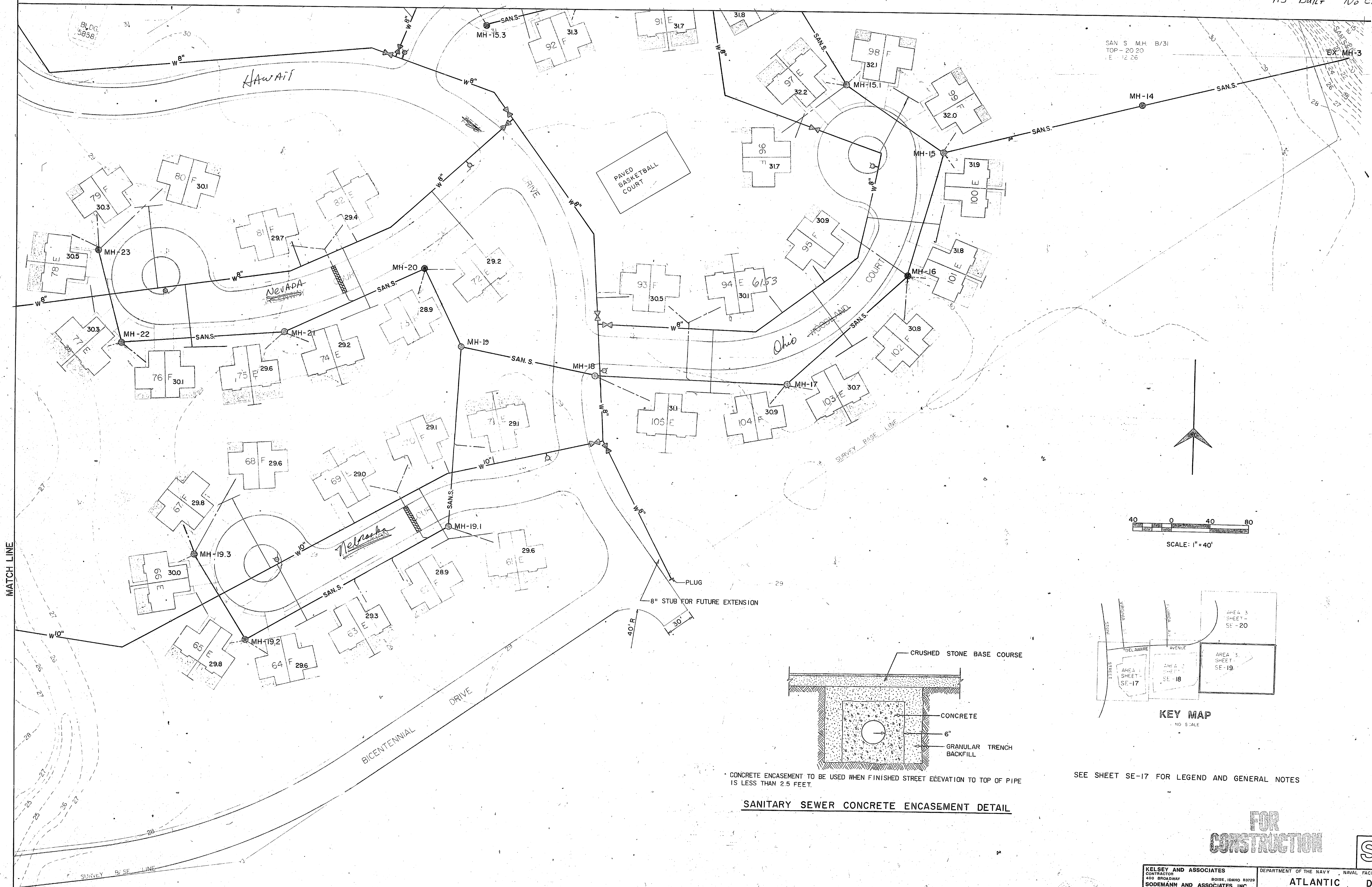
NOTE: ALL MEASUREMENTS FOR COURT MARKINGS ARE TO BE OUTSIDE OF LINES EXCEPT FOR THOSE INVOLVING THE CENTER SERVICE LINE WHICH IS EQUALLY DIVIDED BETWEEN THE RIGHT AND LEFT SERVICE COURTS.

KELSEY AND ASSOCIATES CONTRACTOR 455 BROADWAY BOISE, IDAHO 83729		DEPARTMENT OF THE NAVY NAVAL ARCHITECTS	
SODEMANN AND ASSOCIATES, INC. ENGINEERS ARCHITECTS		NAVAL STATION	
DES. JPD	DR. WS	CHK. GLS	ATLANTIC
PROJ. MGR. Com. EN. ENBR/1-190	DATE 11/19/76		CAMP LE JEUNE FY-76 250 FA'
SUBMITTED BY: [Signature]	DATE 11/19/76		SHEET TITLE
FIRM MEMBER	PRINCIPAL		MISCEL
APPROVED [Signature]	DATE	SIZE	CODE IDEN
OFFICER IN CHARGE	DATE	F	800
APPROVED [Signature]	DATE	SCALE	N.T.S.
FOR EFD FOR COMMANDER NAVFAC			

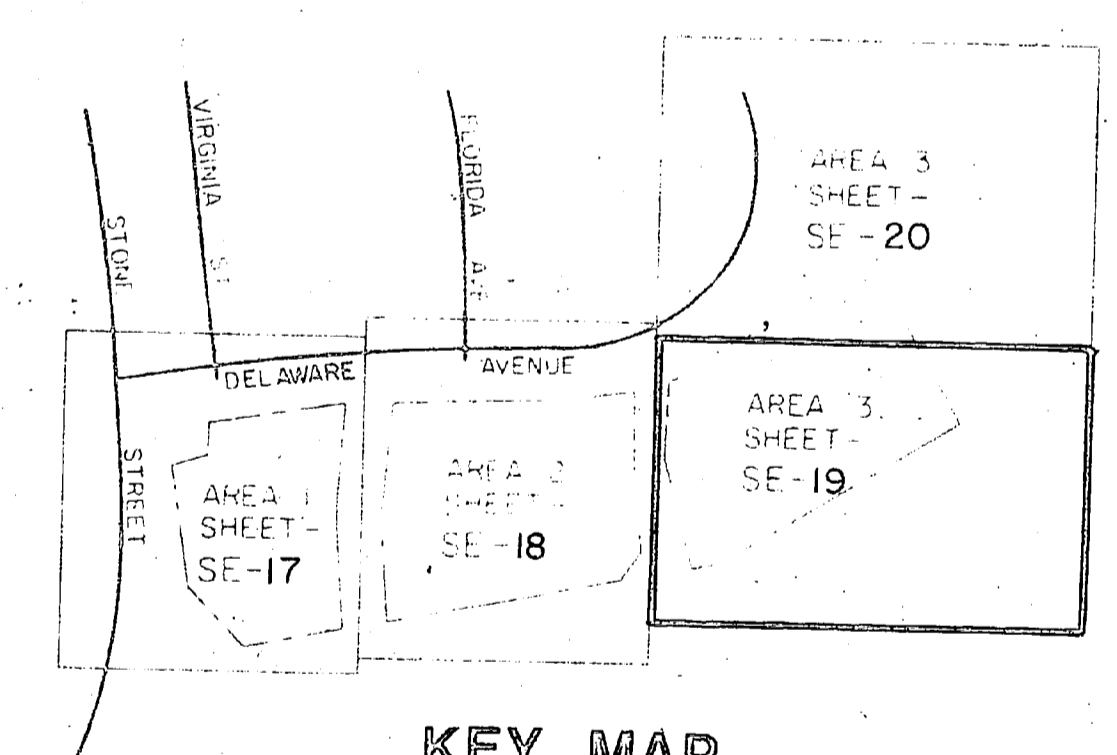
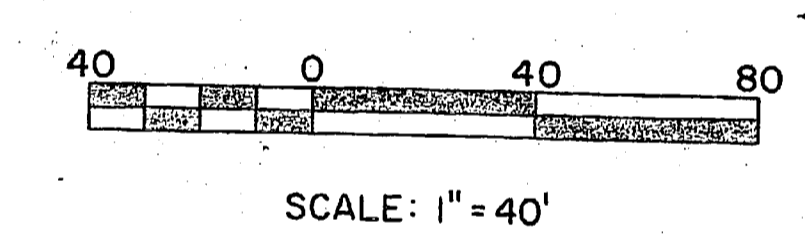
SF 29



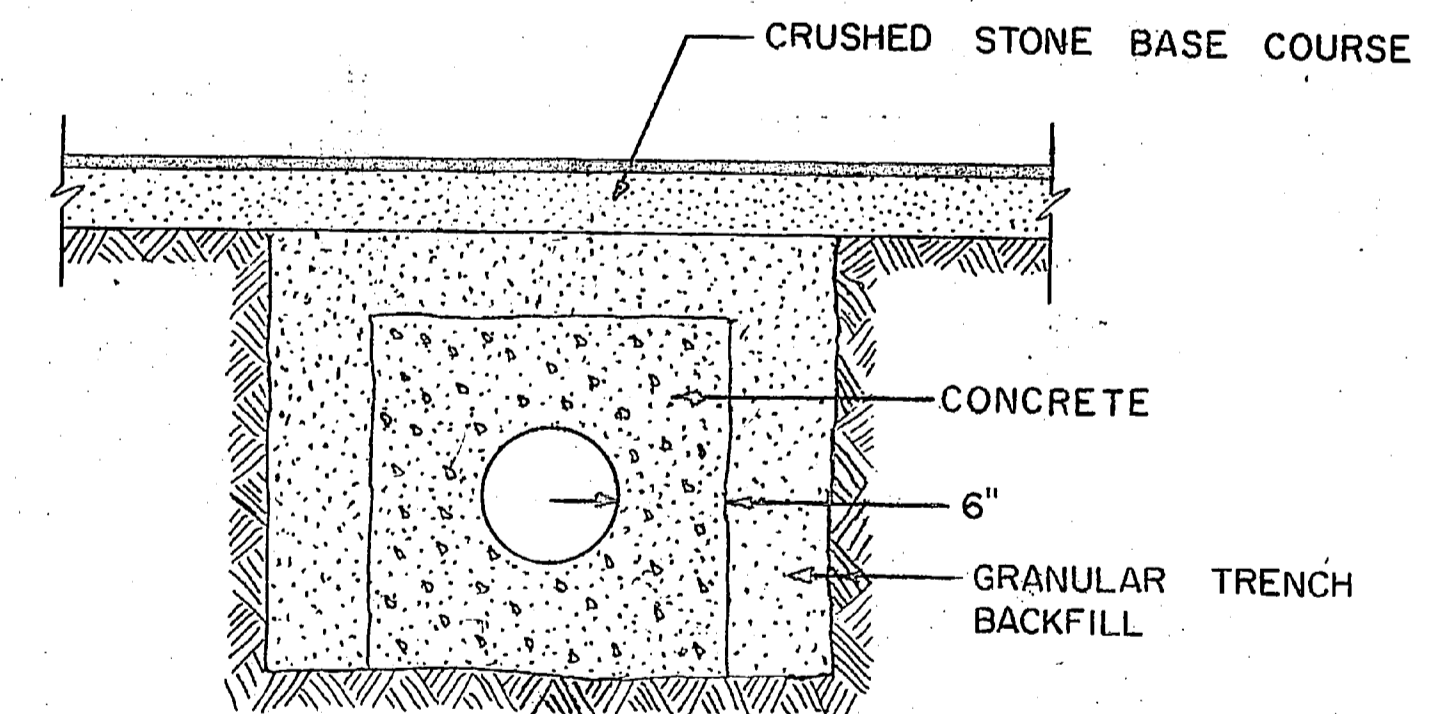
REVISIONS			
SYM	DESCRIPTION	DATE	APPROVED
	AS BUILT NO CHANGE		



SAN S. M.H. B/31
TOP - 20.20
E - 12.28



SEE SHEET SE-17 FOR LEGEND AND GENERAL NOTES



* CONCRETE ENCASEMENT TO BE USED WHEN FINISHED STREET ELEVATION TO TOP OF PIPE IS LESS THAN 2.5 FEET.

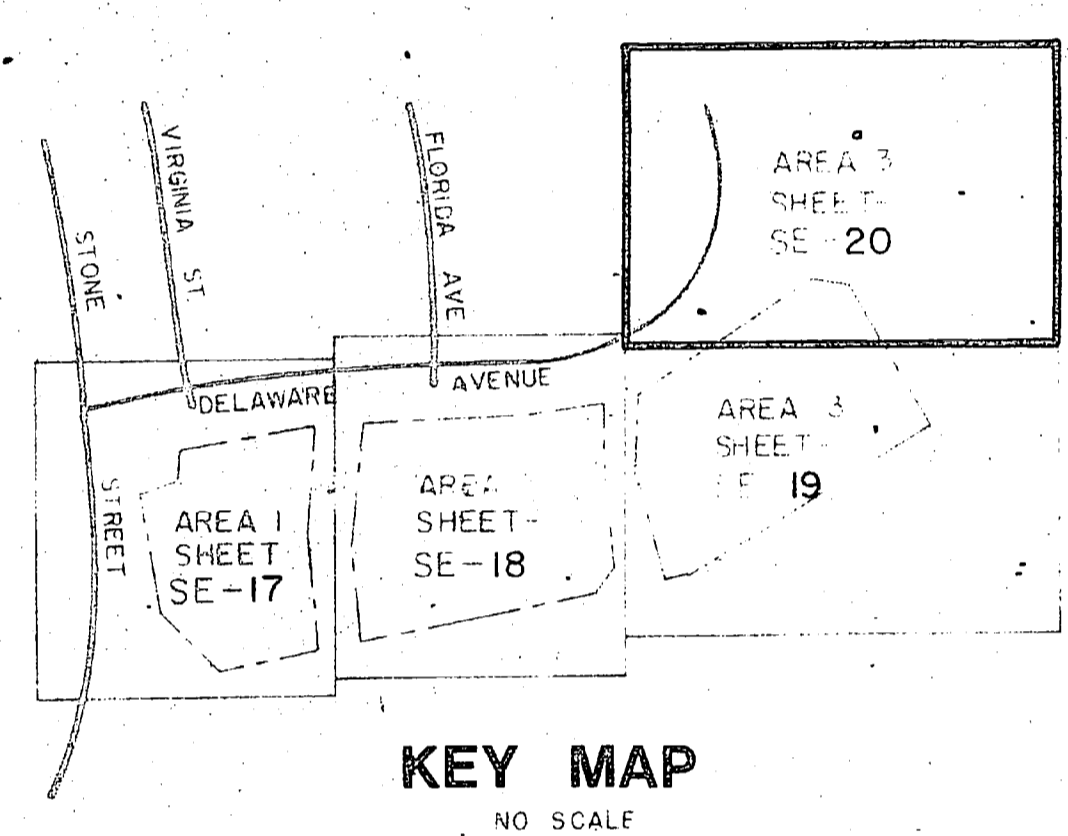
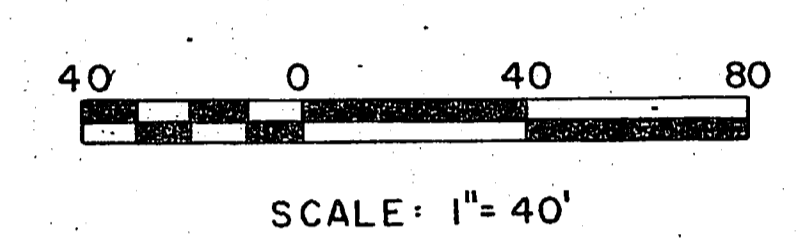
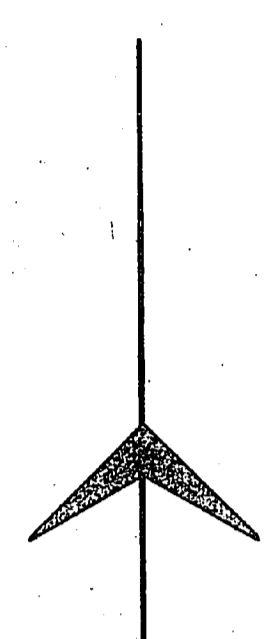
SANITARY SEWER CONCRETE ENCASEMENT DETAIL

FOR CONSTRUCTION

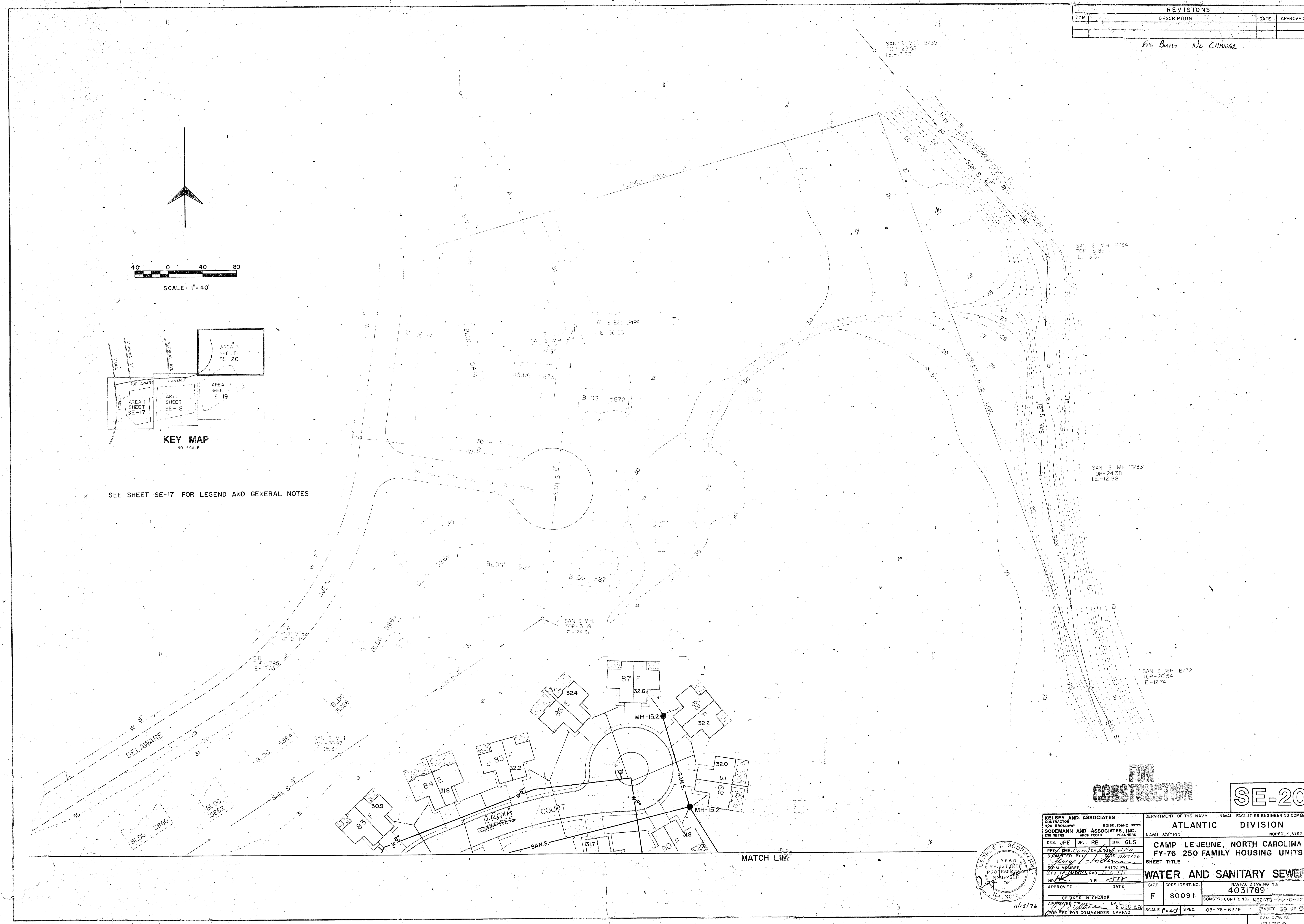
SE-19

KELSEY AND ASSOCIATES CONTRACTOR 400 BROADWAY BOISE, IDAHO 83725		DEPARTMENT OF THE NAVY - NAVAL FACILITIES ENGINEERING COMMAND ATLANTIC DIVISION NAVAL STATION NORFOLK, VIRGINIA	
SODEMANN AND ASSOCIATES, INC. ENGINEERS ARCHITECTS PLANNERS		CAMP LE JEUNE, NORTH CAROLINA FY-76 250 FAMILY HOUSING UNITS WATER AND SANITARY SEWERS	
DES. JPF	DR. RB	CHK. GLS	NAVFAC DRAWING NO. 4031738
PROJ. MGR. CONLCH/ENR/JPP	DATE 11/14/76		CONSTR. CONTR. NO. N62470-76-C-6279
APPROVED [Signature]	DATE 11/14/76		SHEET 68 OF 80
OFFICER IN CHARGE	DATE	SCALE 1" = 40'	SPEC. 05-76-6279
APPROVED [Signature]	DATE		EFD DWG. NO.

REVISIONS			
SYM	DESCRIPTION	DATE	APPROVED
	No Built No Change		



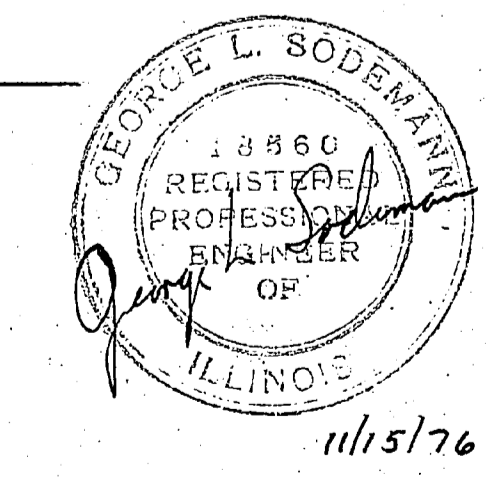
SEE SHEET SE-17 FOR LEGEND AND GENERAL NOTES



FOR CONSTRUCTION

SE-20

KELSEY AND ASSOCIATES CONTRACTOR 400 BROADWAY BOISE, IDAHO 83729		DEPARTMENT OF THE NAVY NAVAL FACILITIES ENGINEERING COMMAND	
SODEMANN AND ASSOCIATES, INC. ENGINEERS ARCHITECTS PLANNERS		ATLANTIC DIVISION	
DES: JPF DR: RB CHK: GLS		NAVAL STATION NORFOLK, VIRGINIA	
PROJ: MR. CAMP/CH. LEJEUNE/SPC		CAMP LEJEUNE, NORTH CAROLINA	
SUBMITTED BY: <i>George L. Sodemann</i>		FY-76 250 FAMILY HOUSING UNITS	
DATE: 11/15/76		SHEET TITLE	
PRINCIPAL		WATER AND SANITARY SEWERAGE	
APPROVED: <i>George L. Sodemann</i>		NAVFAC DRAWING NO. 4031789	
DATE: 11/15/76		SIZE: F CODE IDENT. NO. 80091	
OFFICER IN CHARGE		CONSTR. CONTR. NO. N62470-70-C-6279	
DATE: 8 DEC 1976		SCALE: 1"=40' SPEC. 05-76-6279	
FOR EFD FOR COMMANDER NAVFAC		SHEET 39 OF 36	



131789

