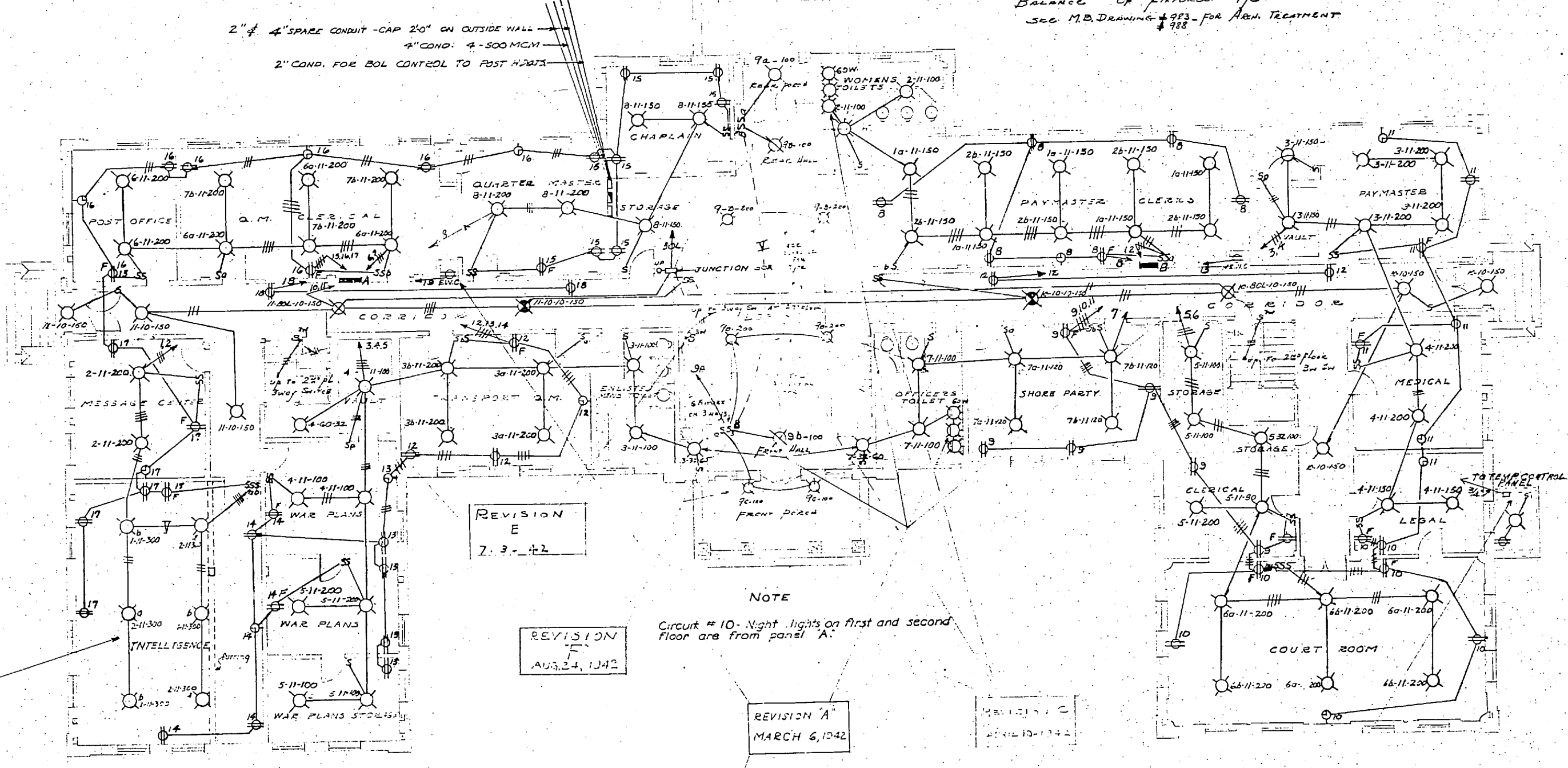


FIXTURE SCHEDULE

Lobby A. CURTIS # 2352 with 1400 RING OR EQUAL RECESSED
 FRONT END HALL - 2. - # 2302 - 1403P
 REAR PORCH CURTIS # 2301 - 1403T
 FRONT " - MUELIN # 7162 IRON CURTIS 6" x 6"
 BALANCE OF FIXTURES 97C
 SEE M.D. DRAWING # 973 - FOR A.B.H. TREATMENT



REVISION 'E'
MAY 15 1942

REVISION 'E'
Z. 3. - +2

REVISION 'F'
AUG. 24, 1942

REVISION 'A'
MARCH 6, 1942

REVISION 'B'
MARCH 15, 1942

FIRST FLOOR PLAN

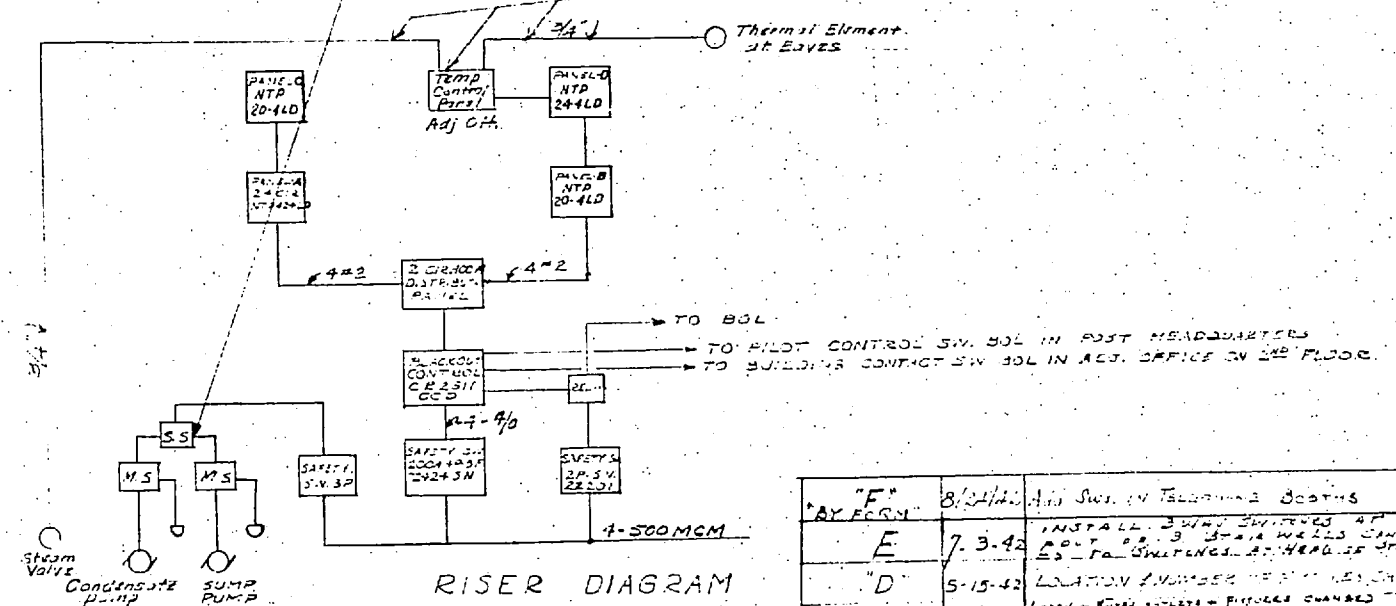
SCALE - 1/8" = 1'-0"

NOTE
Circuit # 10 - Night lights on first and second floor are from panel A.

SYMBOLS

- CEILING OUTLET
- ⊗ BRACKET OUTLET
- ⊗ BLACKOUT LIGHT
- ⊗ NIGHT LIGHT
- ⊕ DUPLEX RECEPTACLE
- S SINGLE POLE SWITCH
- SP SP SW 2 MILDT LAMP
- ⊕ CLOCK OUTLET
- ⊕ FAN RECEPTACLE

NOTE: S-N-30 indicates S-Cir No. 11 Type of Fixture GO. Markings

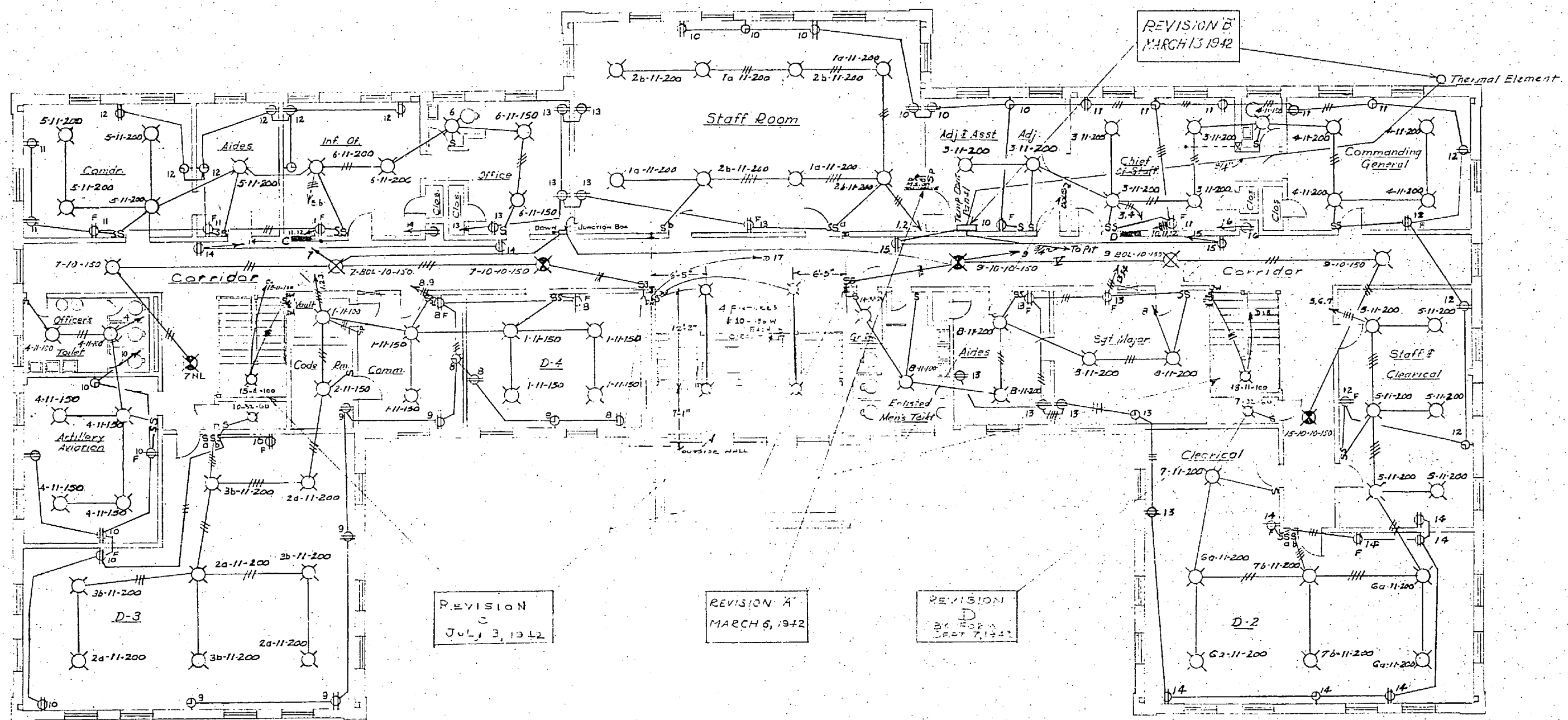


RISER DIAGRAM

REV.	DATE	DESCRIPTION	BY	CHKD.
"F"	8-24-42	ADD SW. IN REAR PORCH	W.C.	W.C.
"E"	7-3-42	INSTALL 3" DIA. WELLS UNDER 25' PA. SW. IN REAR PORCH	W.C.	W.C.
"D"	5-15-42	LOCATION NUMBER 10-11-150	W.C.	W.C.
"C"	4-10-42	LEAD - 2" DIA. BRIDGE CHANGED TO 3" DIA. WELLS	W.C.	W.C.
"B"	MAR 13	TEMP CONTROL ADDED	W.C.	W.C.
"A"	MAR 6	TYPE FIXTURES CHANGED, ENG. RECEPTACLE OUTSIDE IN REAR PORCH	W.C.	W.C.

DRAWN BY: S.W.L.
 CHECKED BY: B.N.H.
 CHECKED BY: B.N.H.
 CHIEF DPMN: B.N.H.
 IN CHARGE: B.N.H.
 DATE: FEB 5 1942
 SCALE: 1/8" = 1'-0"
 T. & D. DRAWING NO.: 162725
 ARCHITECT-ENGINEERS: CARR & J. E. GREINER CO. - ARCHITECT-ENGINEERS DURHAM, N. C.
 MARINE BARRACKS-NEW RIVER, N. C. BUREAU OF YARDS AND DOCKS - U. S. NAVY
 DIVISIONAL HEADQUARTERS
 ELECTRICAL LAYOUT
 FIRST FLOOR PLAN
 APPROVED: Feb 18 1942
 BY: [Signature]
 SHEET: 1 of 2
 U.S. PROJ. NO. P-107-2
 U.S. D.W. NO. 1716





NOTE: Night Light Circuit #10 is from Panel 'A' on First Floor.

SECOND FLOOR PLAN
SCALE: 1/8" = 1'-0"

- SYMBOLS**
- ⊖ CEILING OUTLET
 - ⊖ NIGHT LIGHT
 - ⊖ BOL. OUTLET
 - ⊖ DUPLEX RECEPT.
 - ⊖ FAN RECEPT.
 - ⊖ S.P. SWITCH
 - ⊖ S.P. WITH PILOT LAMP
 - ⊖ CONDUIT TURNING UP
 - ⊖ CONDUIT TURNING DOWN
 - ⊖ CLOCK OUTLET
- NOTE: S 1/2" = 60" indicates 1/2" S. Cr. No. 11-Type of fixture, 60 wattage.

CARR & J. E. GREINER CO. - ARCHITECT-ENGINEERS
DURHAM, N. C.
MARINE BARRACKS - NEW RIVER, N. C.
BUREAU OF YARDS AND DOCKS - U. S. NAVY

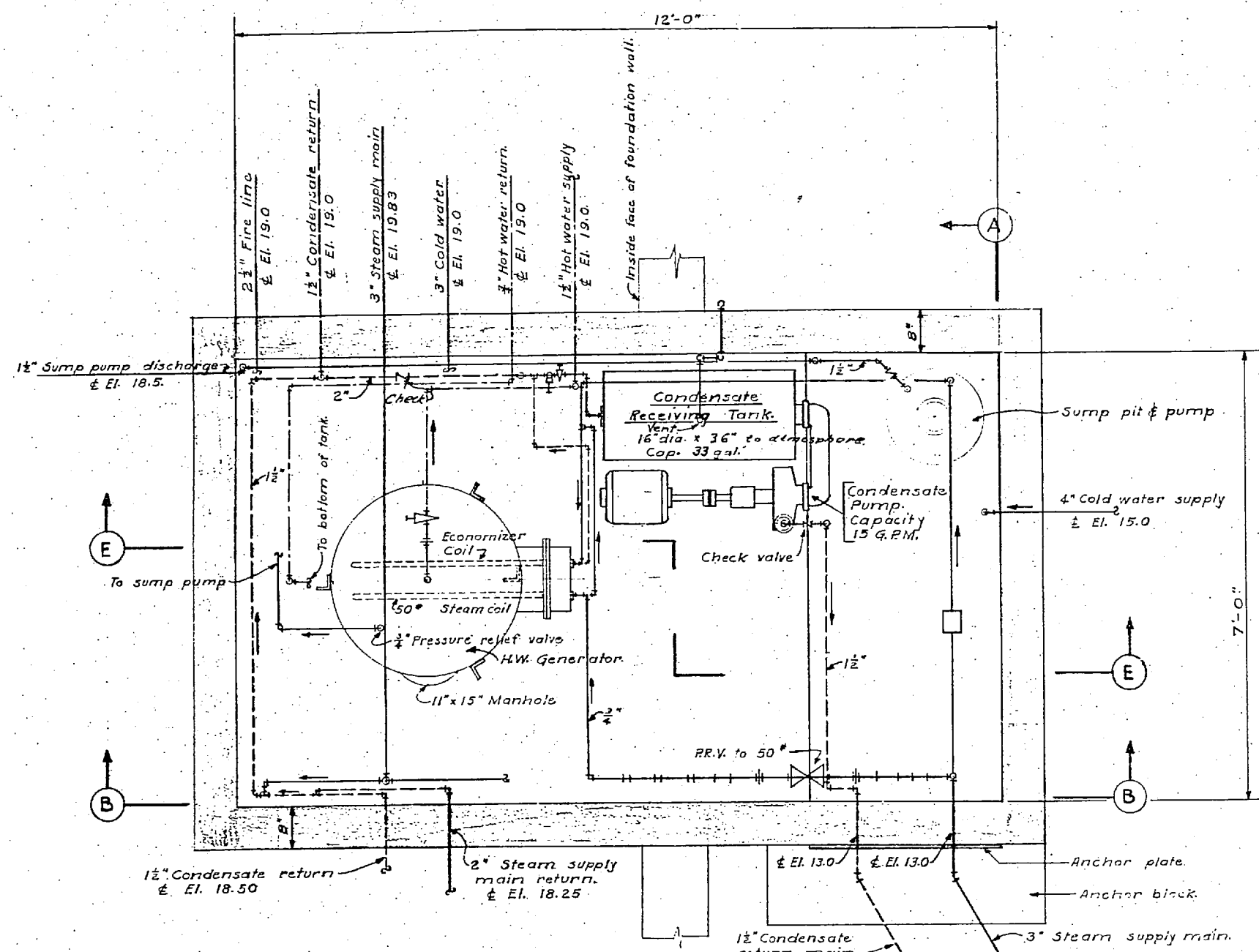
DIVISIONAL HEADQUARTERS
ELECTRICAL LAYOUT
SECOND FLOOR PLAN

DATE: Feb. 3, 1942
SCALE: 1/8" = 1'-0"
DRAWING NO. 162726

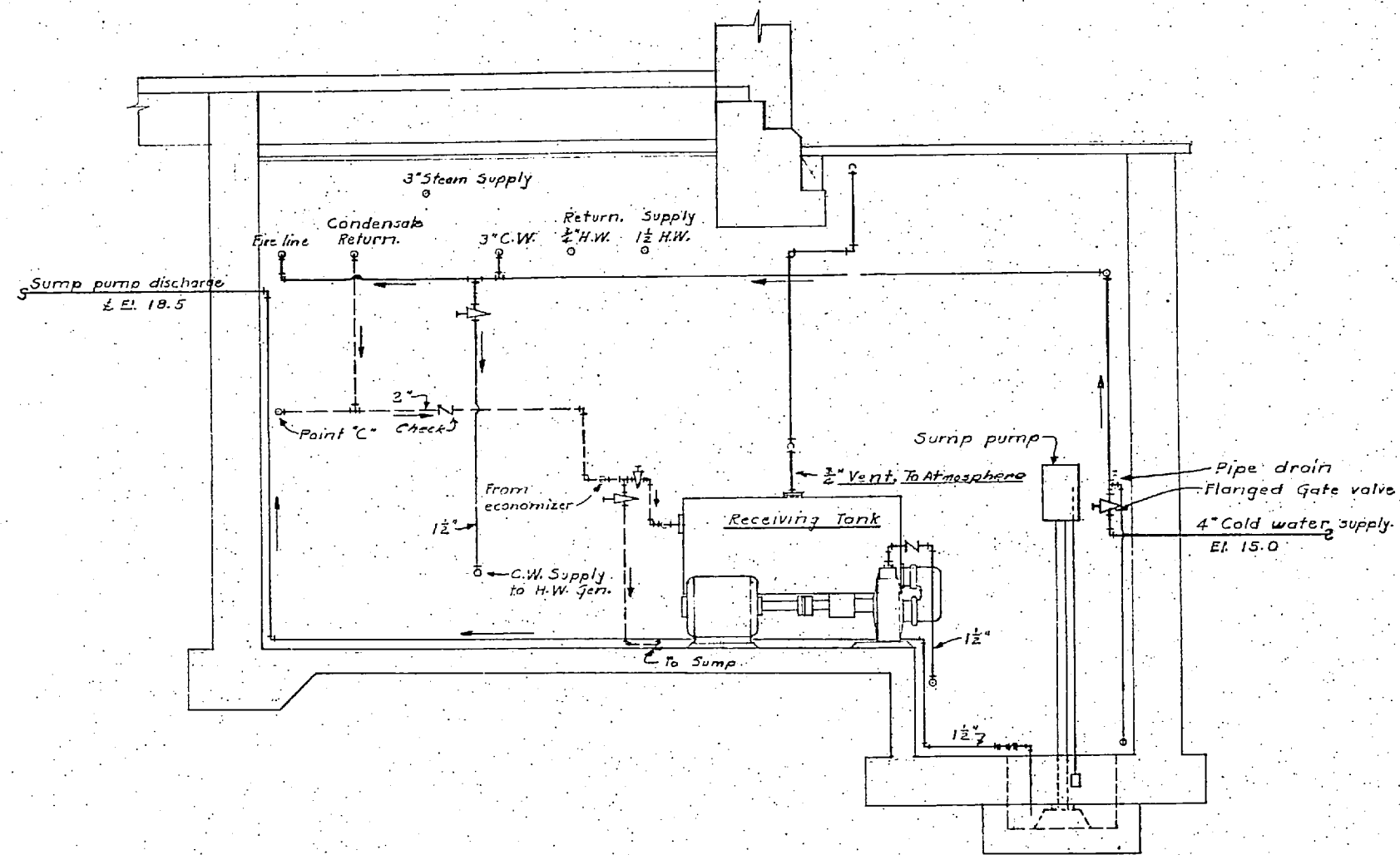
APPROVED: Feb 18 1942
BY: [Signature]
REVISIONS: 2 OF 2
SHEET NO. 1717

REV.	DATE	DESCRIPTION	BY	CHKD.
D	7.7.42	ADD LIGHTING FIXTURES & WIRE SIZES	[Signature]	[Signature]
C	7.3.42	INDICATE POWER SUPPLY TO STAIRWELL	[Signature]	[Signature]
B	MARCH 13	TEMP. CONTROL ADDED	[Signature]	[Signature]
A	MARCH 6	ADD S.P. SWITCH, LIGHT FIXTURE TYPE 11 FOR THERMOSTATIC ELEMENT CONTROL	[Signature]	[Signature]

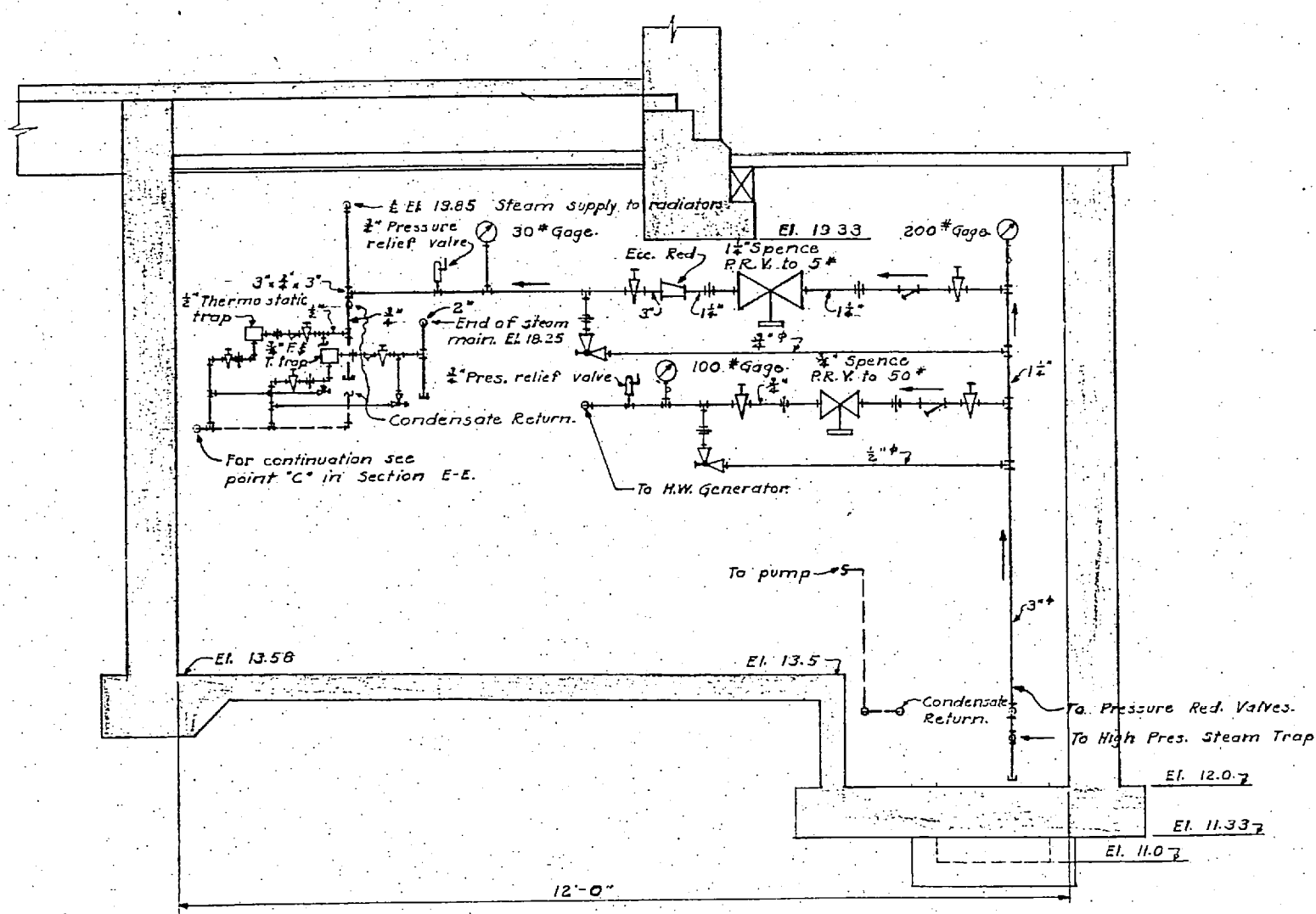




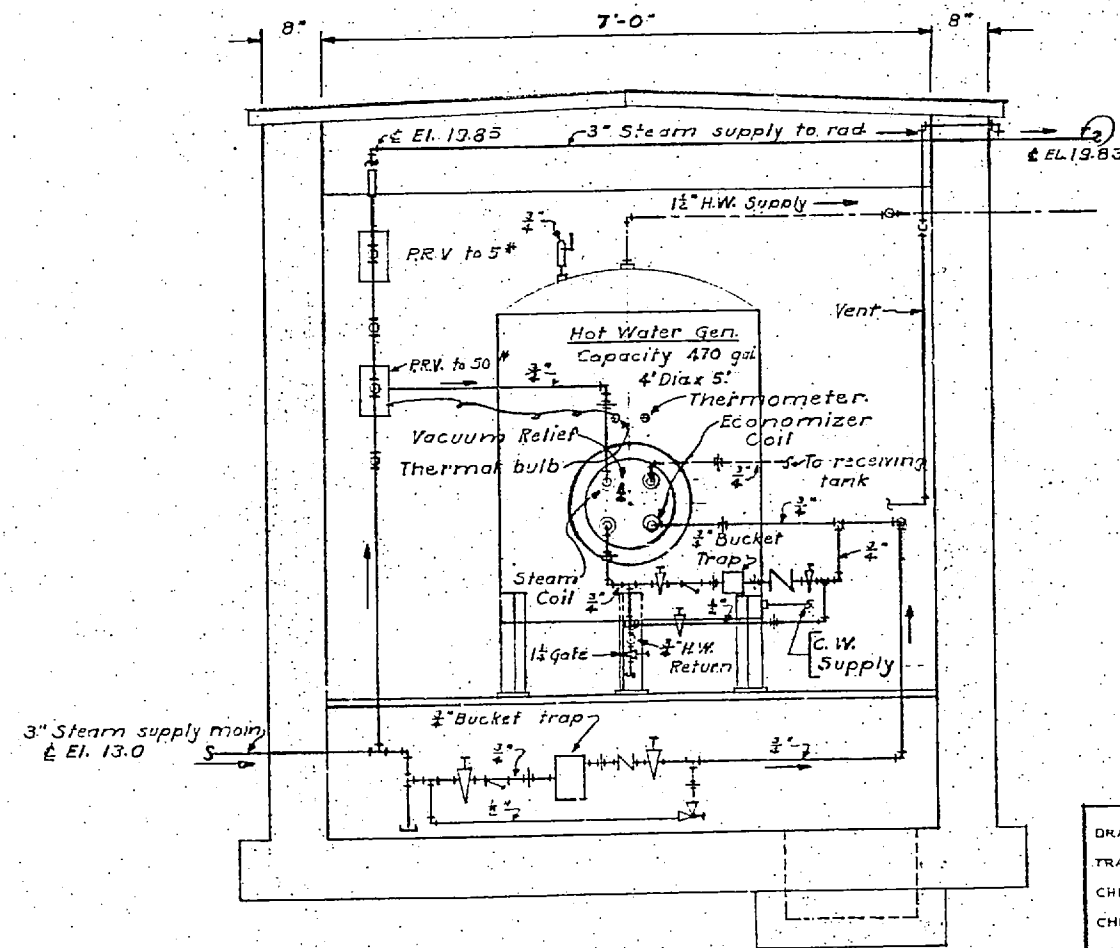
PIT PLAN
Scale 1/4" = 1 FT.



SECTION E-E
Scale 1/4" = 1 FT.



SECTION B-B
Scale 1/4" = 1 FT.



SECTION A-A
Scale 1/4" = 1 FT.

NOTE: For Pressure Reducing Valve & Bypass Connections in Pit Refer to 21-YC Detail #6 Include Strainers For Drip Trap Connections Refer to 21-YC Detail #5

Notes:
See M.B. Dwg. No. 1605 for reference.

DRAWN BY A.A.
CHECKED BY C.M.H.
CHIEF DWG. 2315
IN CHARGE
DATE Jan. 2, 1942
SCALE 1/4" = 1 FT.
T. & D. DRAWING NO.

CARR & J. E. GREINER CO. - ARCHITECT-ENGINEERS
DURHAM, N. C.
MARINE BARRACKS - NEW RIVER, N. C.
BUREAU OF YARDS AND DOCKS - U. S. NAVY

DIVISIONAL HEADQUARTERS
HEATING
MECHANICA

162716

APPROVED Jan 12 1942
BY [Signature]

34" 22" 17" 11" 8.5" 8.5" 11" 17" 22" 34"

Vent and 1" V.T.

Receiving tank vent to outside (See Cond.)

