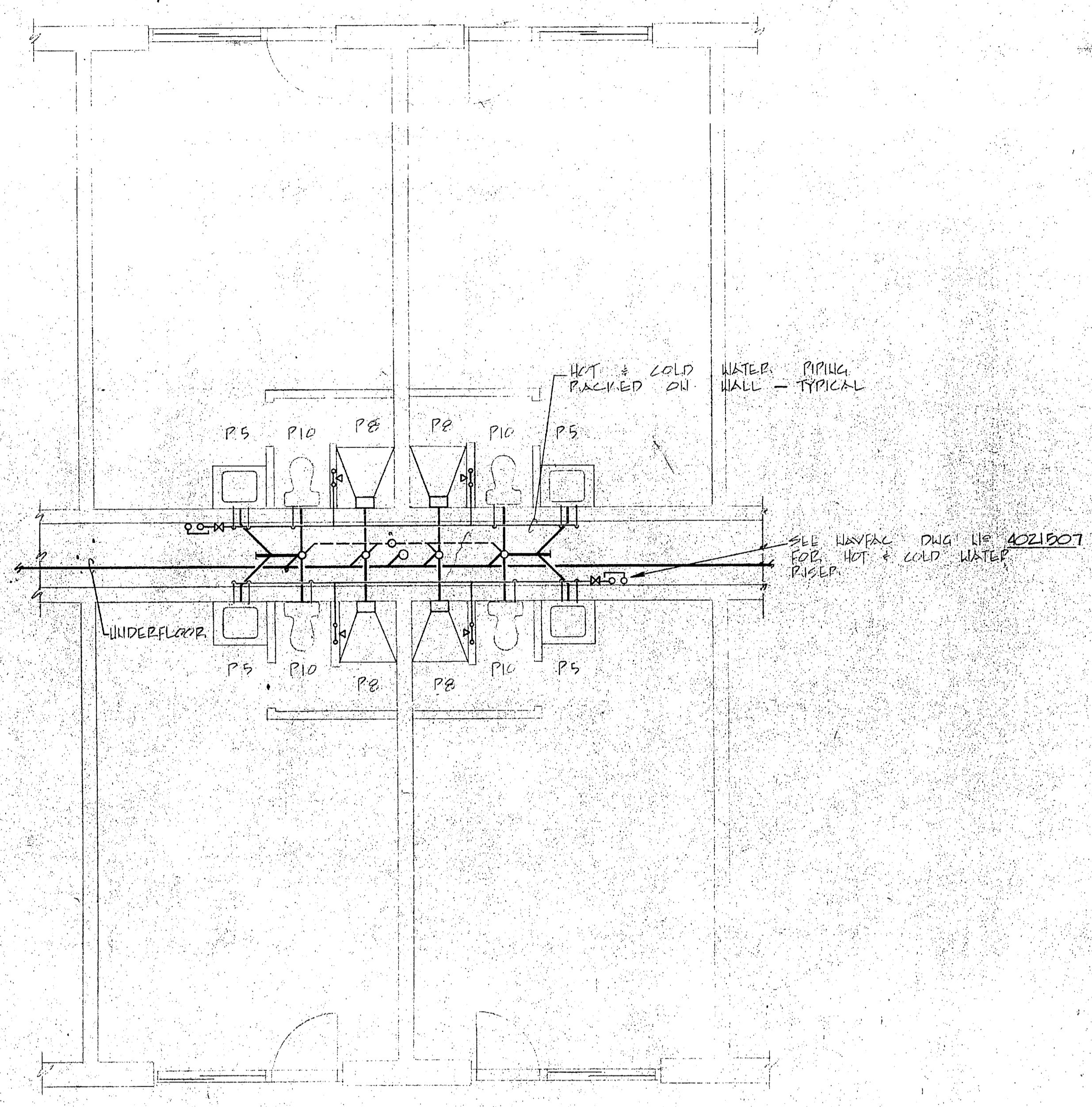
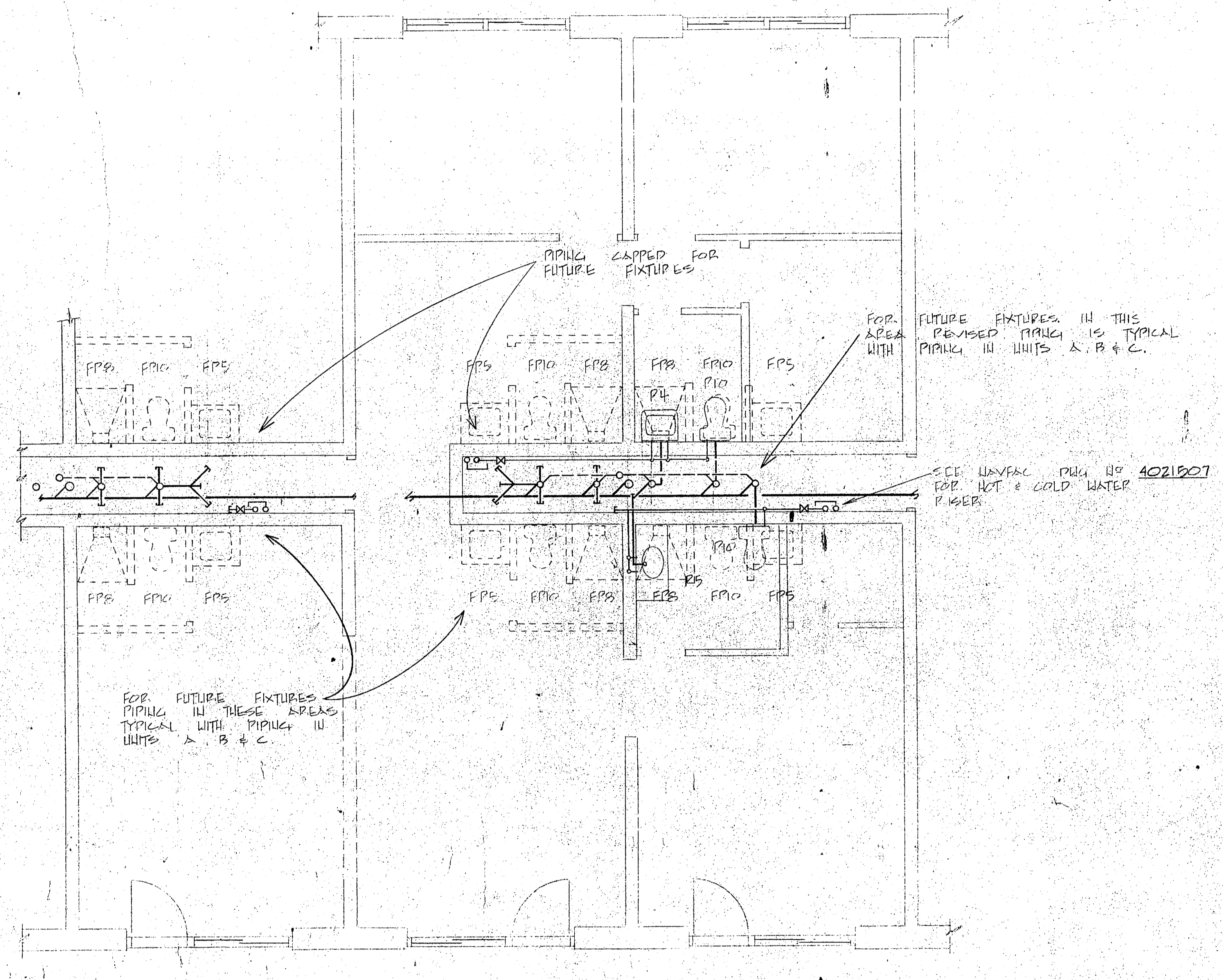


REVISIONS				
SYM	DESCRIPTION	PREP'D BY	DATE	APPROVED



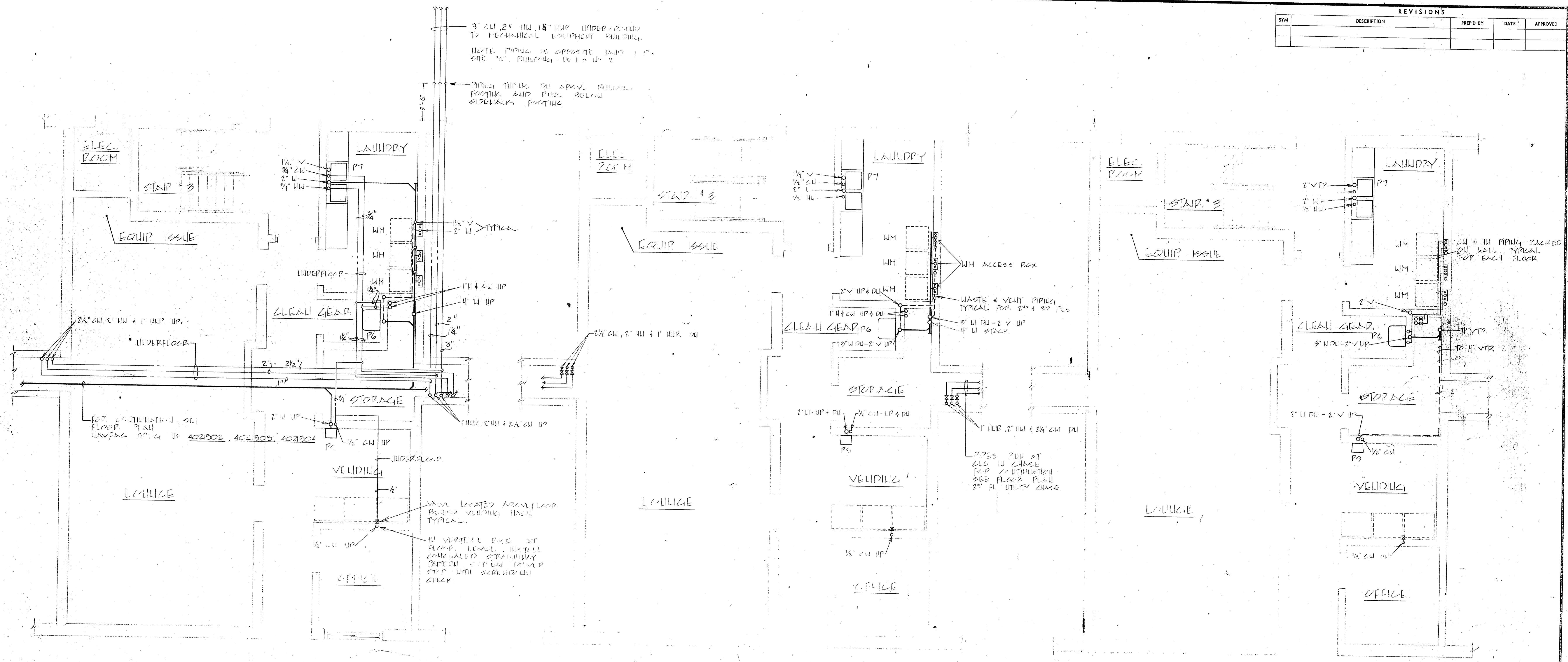
TYPICAL UNITS A, B, & C
1/4" = 1' - 0"



TYPICAL UNIT "G"
1/4" = 1' - 0"

	J. N. PEASE ASSOCIATES ARCHITECTS - ENGINEERS - PLANNERS CHARLOTTE NORTH CAROLINA	DEPARTMENT OF THE NAVY ATLANTIC DIVISION NAVAL STATION NORFOLK, VIRGINIA
	DES. BY: J.N.P. DR. ENG. CHK. SUBMITTED BY: R. B. DATE: 25 APRIL 75 FIRM MEMBER: R. B. PRINCIPAL	MARINE CORPS BASE CAMP LEJEUNE NORTH CAROLINA BACHELOR ENLISTED QUARTERS FLOOR PLAN AND PIPING FOR UNITS 'A', 'B', 'C' AND 'G' - CAVITY WALL PRECAST PLANK OPTION
P-12	APPROVED: [Signature] DATE: [Blank] OFFICER IN CHARGE DATE: [Blank]	SIZE: F CODE IDENT. NO.: 80091 CONSTR. CONTR. NO. N62410-74-B-1587 SCALE: _____ SPEC: 05-74-1587 SHEET 106 OF 135

REVISIONS				
SYM	DESCRIPTION	PREP'D BY	DATE	APPROVED

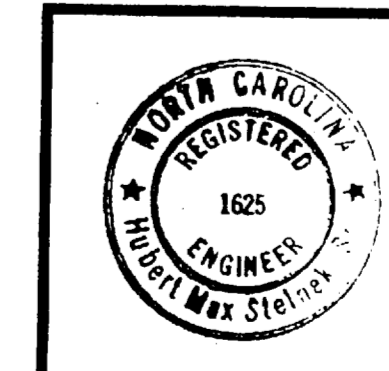


TYPICAL UNIT "D"
1/4" = 1' - 0"

TYPICAL UNIT "E"
1/4" = 1' - 0"

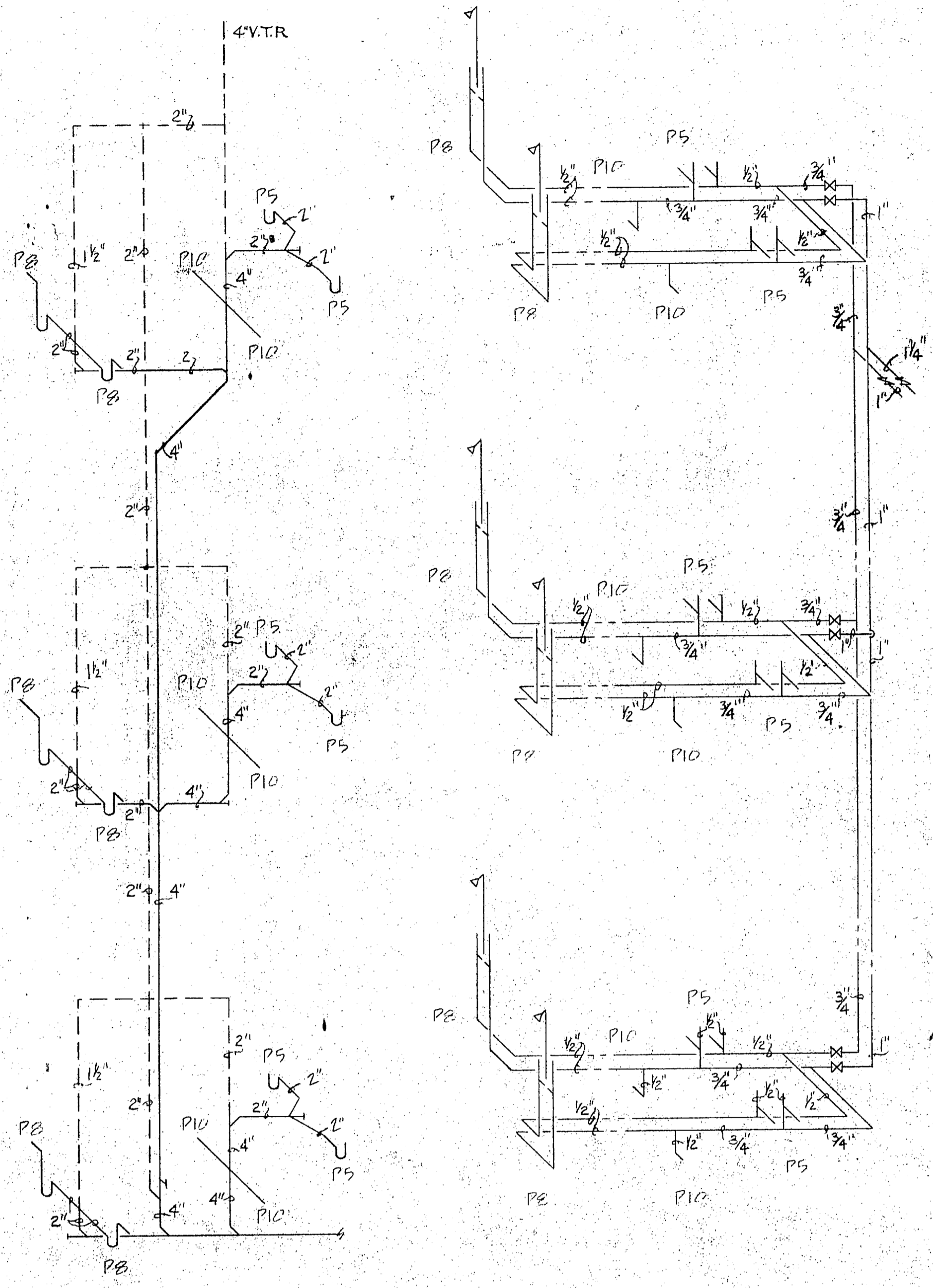
TYPICAL UNIT "F"
1/4" = 1' - 0"

NOTE: SEE NAVFAC PLAN NO. 4021505 FOR
WASTE & WATER PIPING
IN CENTRAL CORE AREA.



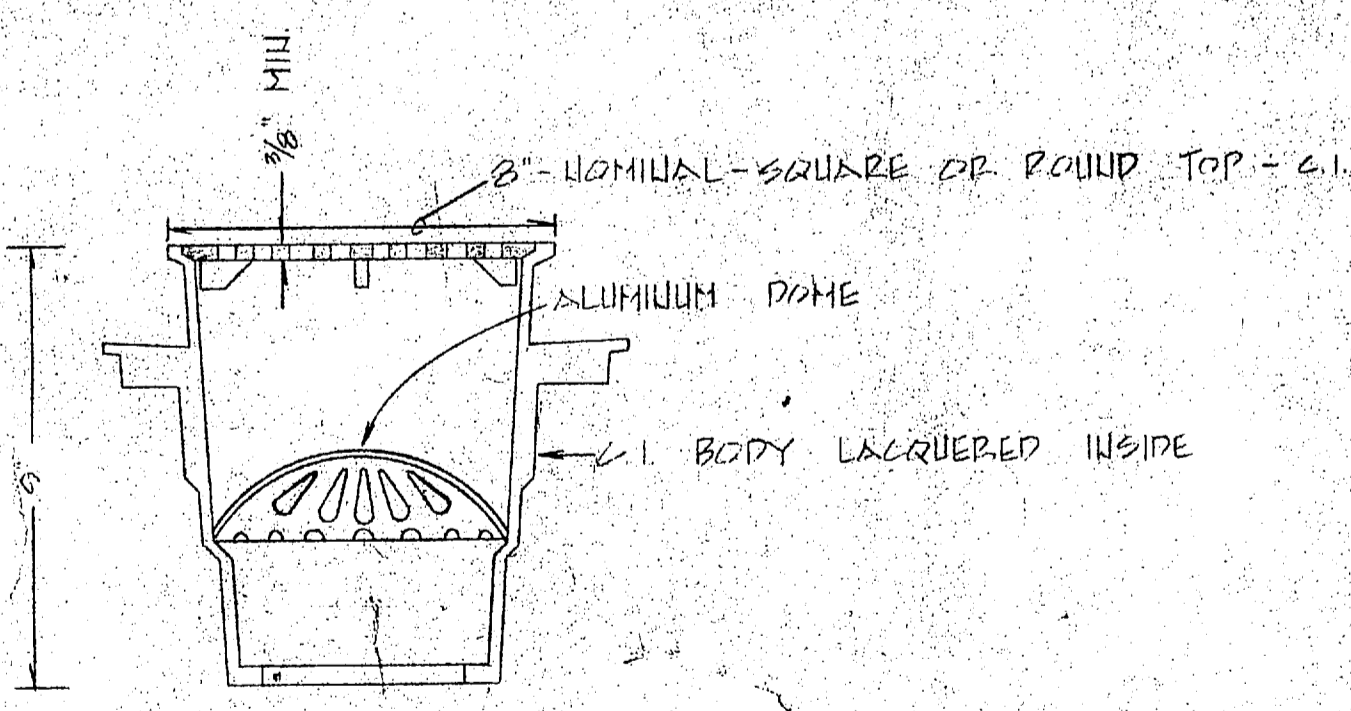
J. N. PEASE ASSOCIATES ARCHITECTS - ENGINEERS - PLANNERS CHARLOTTE NORTH CAROLINA		DEPARTMENT OF THE NAVY ATLANTIC DIVISION NAVAL STATION NORFOLK, VIRGINIA	
DES. WMC DRAWN DR CHECKED CHK DATE: 25 APRIL '75 FIRM MEMBER: PRINCIPAL	PROJ. MGR. D.M.M. CIVIL ENGR. DATE: 25 APRIL '75 FIRM MEMBER: PRINCIPAL	NAVAL FACILITIES ENGINEERING COMMAND CAMP LEJEUNE MARINE CORPS BASE NORTH CAROLINA	
BACHELOR ENLISTED QUARTERS FLOOR PLAN AND PIPING FOR UNITS "D", "E" AND "F" - 14" CAVITY WALL PRECAST PLANK OPTION		SIZE: F CODE IDENT. NO.: 80091	NAVFAC DRAWING NO.: 4021505 CONSTR. CONTR. NO.: N022470-74-B-1587
P-13		SCALE: _____ SPEC: 05-74-1587	SHEET 107 OF 135

REVISIONS			
SYM	DESCRIPTION	PREP'D BY	DATE

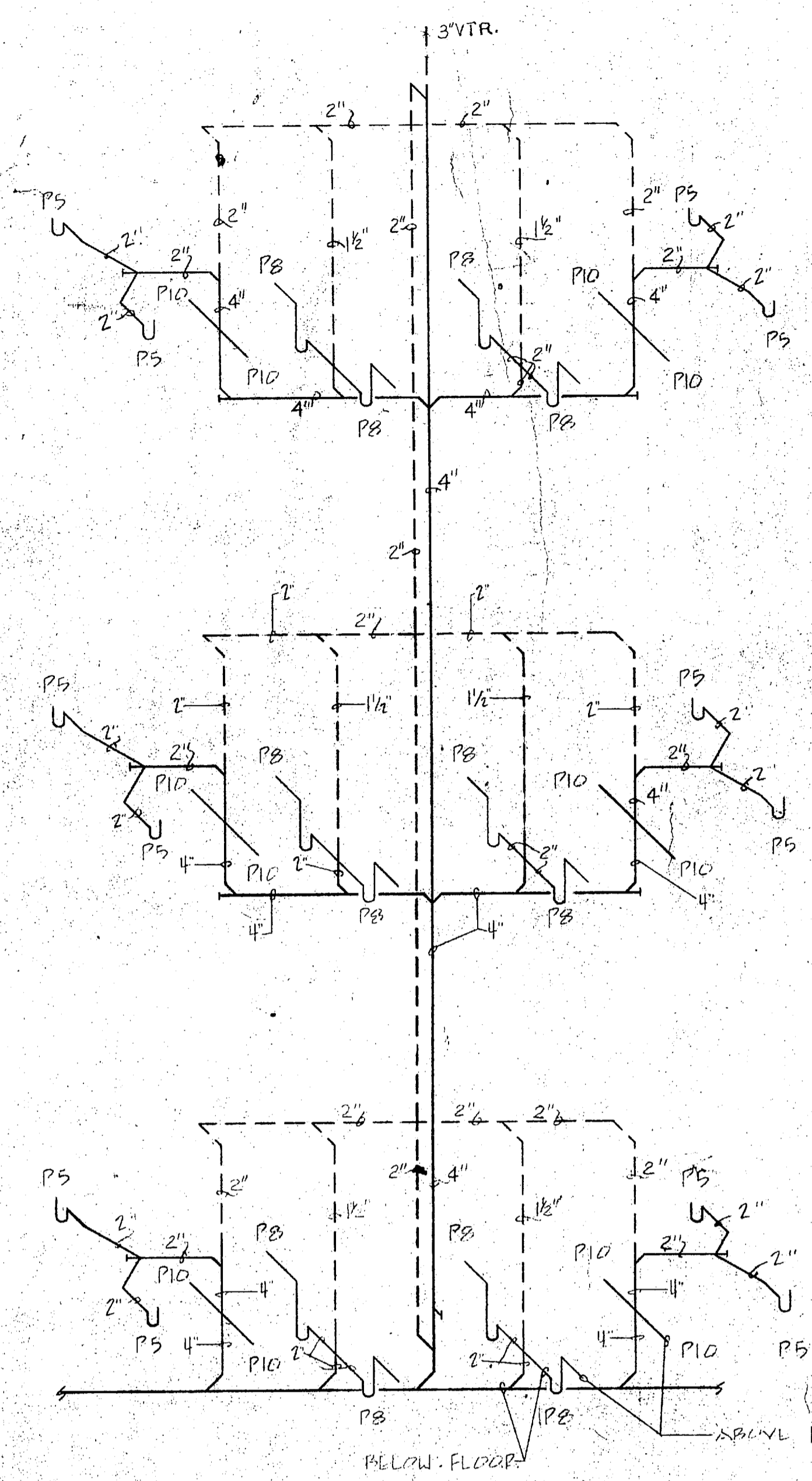


WASTE, VENT, HOT & COLD WATER
RISERS FOR UNITS 1/2 A
NOT TO SCALE

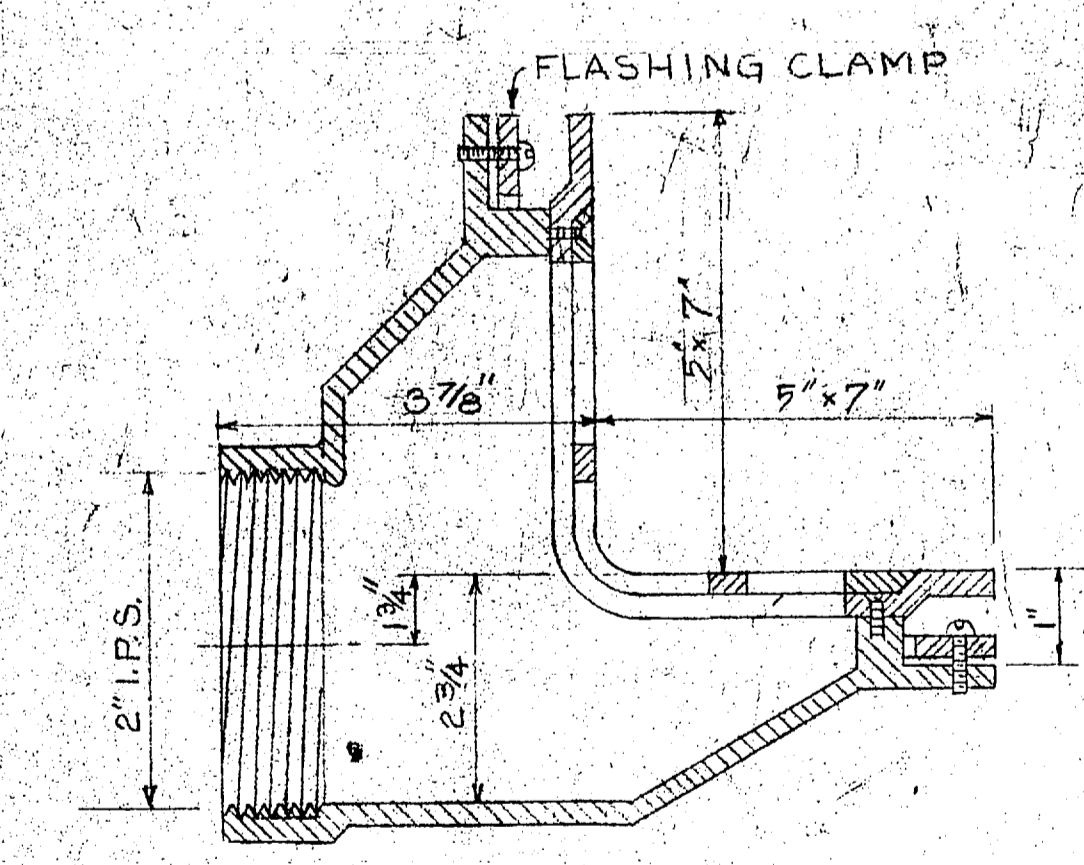
NOTE: RISERS FOR UNITS 1/2 B & 1/2 C ARE SIMILAR TO RISERS FOR THIS UNIT.



EQUIPMENT ROOM
FLOOR DRAIN DETAIL FD-2
1/4\"/>

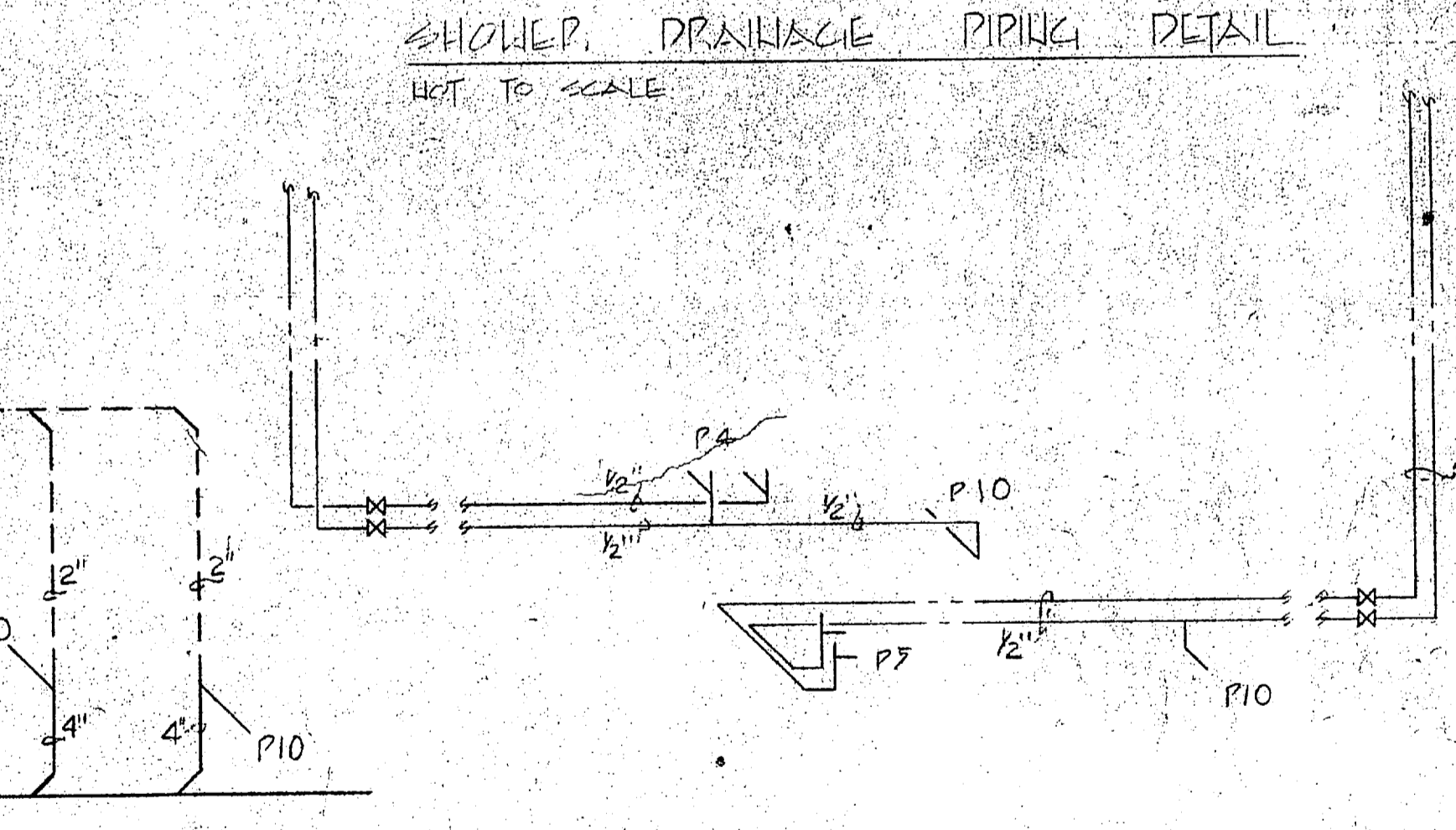
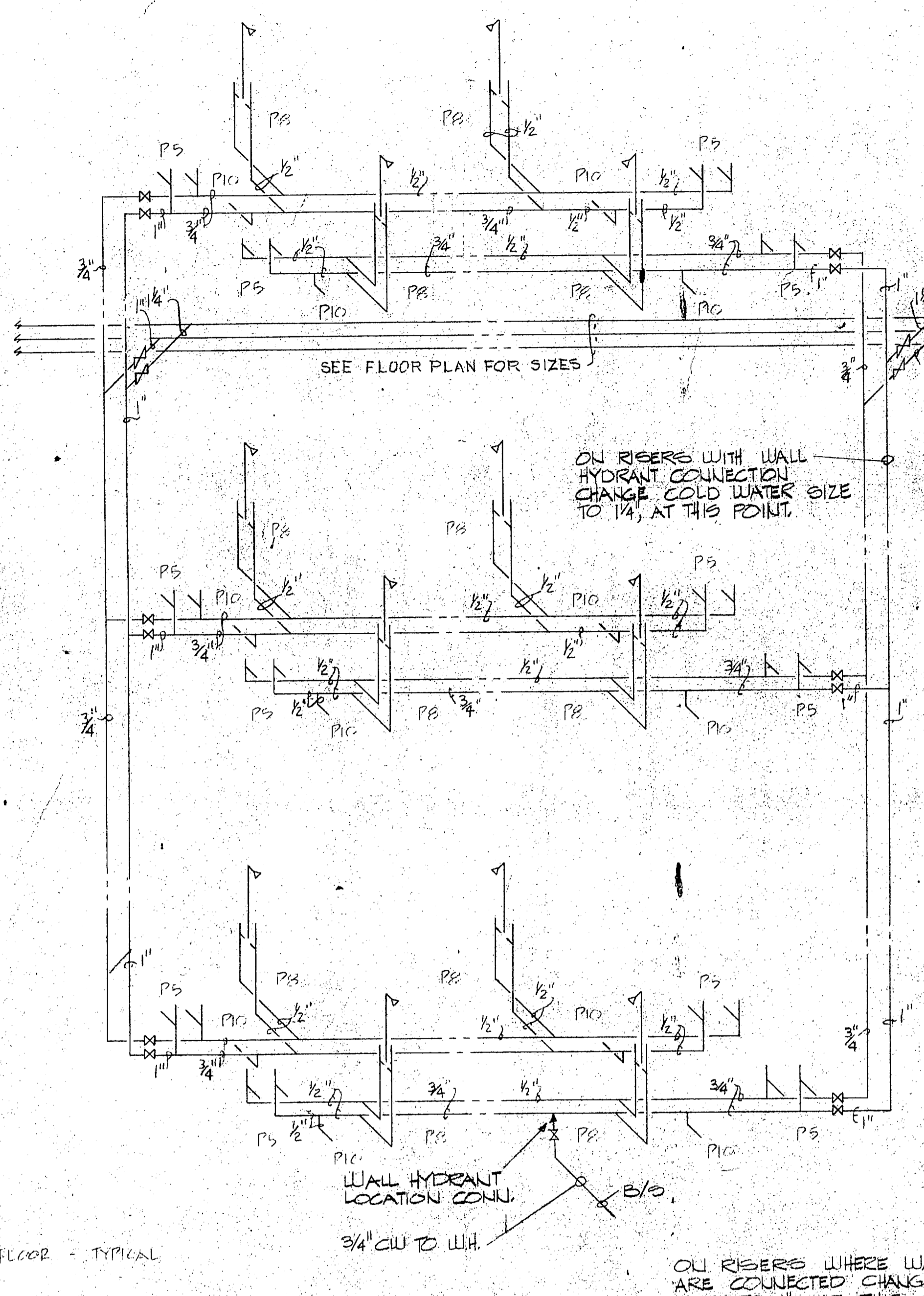


WASTE, VENT, HOT & COLD WATER
RISERS FOR UNITS A, B & C
NOT TO SCALE



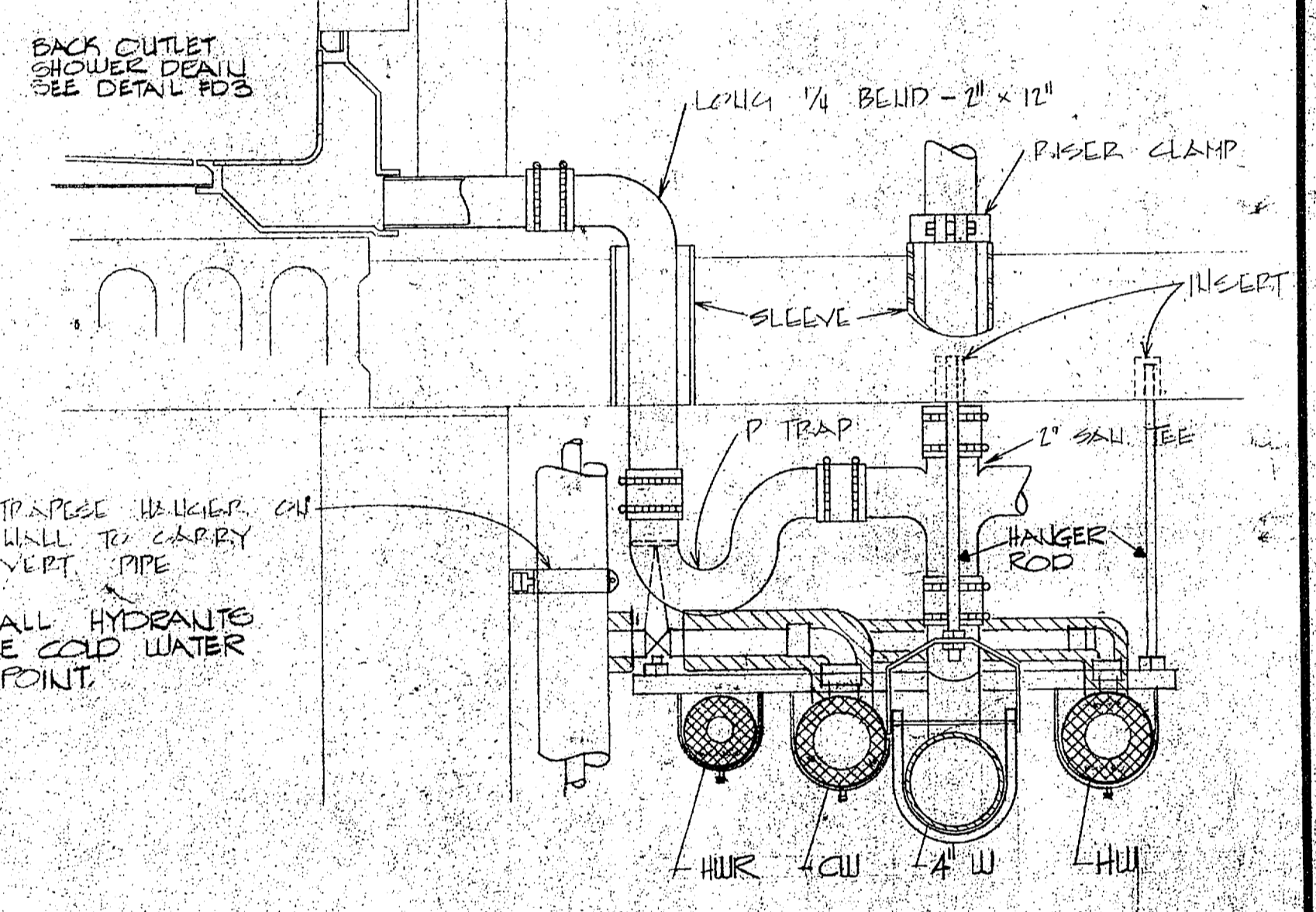
BACK OUTLET
SHOWER DRAIN DETAIL FD-3

NOTE: ALL SHOWER DRAINS UNDER 11\"/>



WASTE, VENT, HOT & COLD WATER
RISERS FOR UNIT 4
NOT TO SCALE

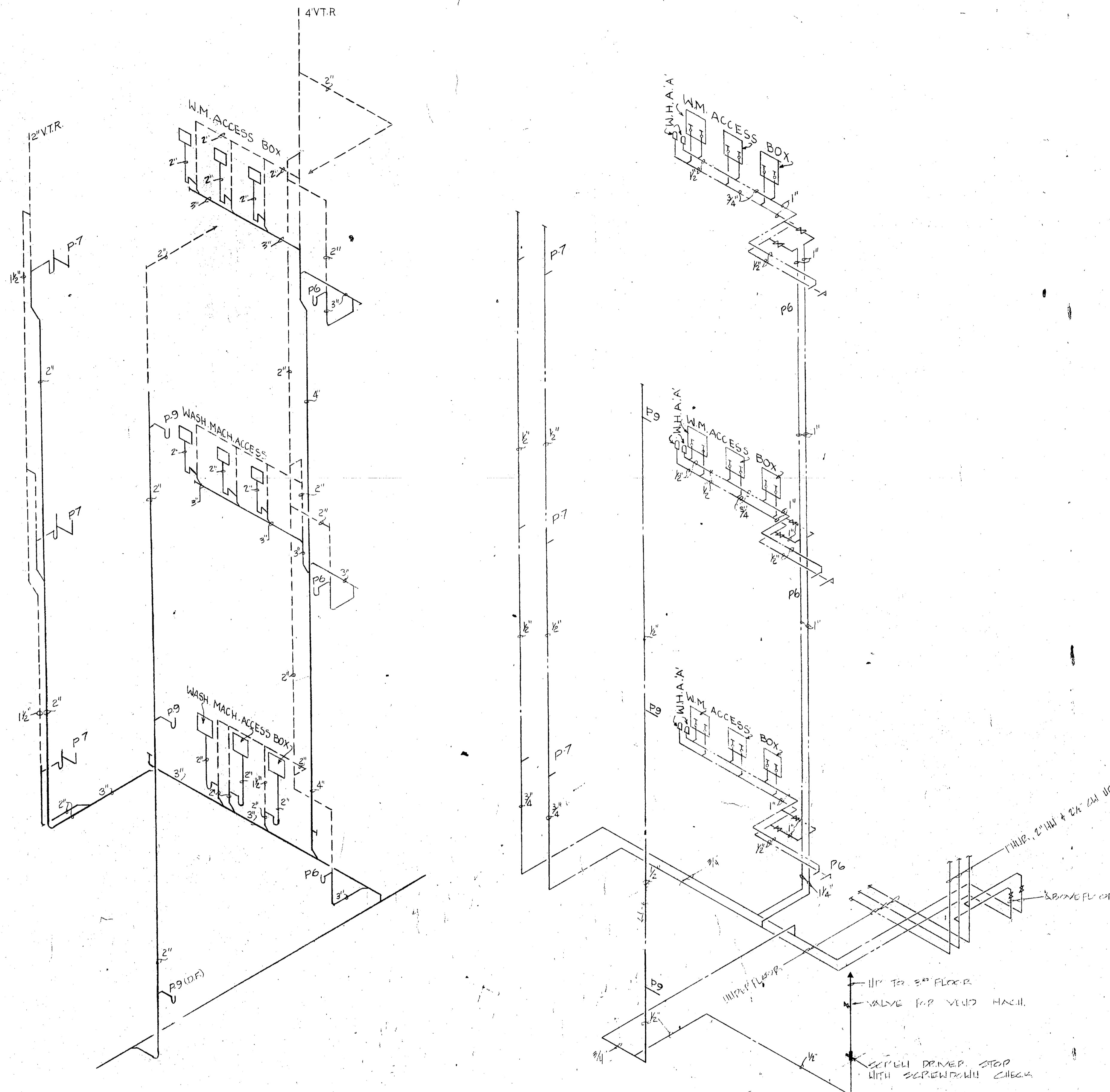
- NOTES: APPLYING TO DETAIL BELOW
1. DETAIL SHOWS WASTE COLLECTIONS FROM SHOWERS AND WATER PIPE ARRANGEMENT AT 2ND FLOOR CEILING.
 2. WASTE FROM SHOWERS ON 3RD FLOOR IS SIMILAR TO DETAIL.
 3. 1ST FLOOR SIMILAR ON SHOWER COLLECTIONS EXCEPT NO FLOOR GLASS IS PROVIDED OVER CHASE (TUNNEL) - DRAIN CAN BE RAISED.



SHOWER DRAINAGE PIPING DETAIL
NOT TO SCALE

	J. N. PEASE ASSOCIATES ARCHITECTS - ENGINEERS - PLANNERS CHARLOTTE NORTH CAROLINA	DEPARTMENT OF THE NAVY ATLANTIC DIVISION NAVAL STATION CAMP LEJEUNE MARINE CORPS BASE NORTH CAROLINA
	DESIGNED BY: DR. B.A.F. CHK. PROJ. MGR. D.M.M. CH. ENGR. SUBMITTED BY: <i>Robert Pease</i> DATE: 25 APRIL '75 FIRM MEMBER: <i>Robert Pease</i> PRINCIPAL NO. APPROVED: <i>John Pease</i> DATE: 27 APRIL '75 OFFICER IN CHARGE: <i>John Pease</i> DATE: MAY 1975 APPROVED FOR: <i>John Pease</i> DATE: MAY 1975 FOR EFD FOR COMMANDER, NAVFAC	BACHELOR ENLISTED QUARTERS RISER DIAGRAMS AND DETAILS FOR UNITS A, B, C AND G - 14 CAVITY WALL PRECAST PLANK OPTION
P-14		SHEET 108 OF 135

REVISIONS				
SYM	DESCRIPTION	PREP'D BY	DATE	APPROVED



SOIL, WASTE, VENT, HOT & COLD
 WATER RISERS FOR CENTRAL CORE
 NO SCALE

PLUMBING LEGEND	
ABBREVIATIONS	SYMBOLS
A.F.F. ABOVE FINISHED FLOOR	S or W SOIL OR WASTE
B/F BELOW FLOOR	C.W. COLD WATER
B/G BELOW GROUND	H.W. HOT WATER
B/S BELOW SLAB	H.W.R. HOT WATER RETURN
BT. BATH TUB	V. VENT
C.I. CAST IRON	S SEWER
D.F. DRINKING FOUNTAIN	S.D. STORM DRAIN
DN. DOWN	V.T.R. VENT THRU ROOF
F.F. FINISH FLOOR	R.D. ROOF DRAIN
H and CW HOT AND COLD WATER	F.C.O. FLOOR CLEAN OUT
I/C IN CEILING	W.C.O. WALL CLEAN OUT
LAV. LAVATORY	G.V. GATE VALVE
SH. SHOWER	B.C. BALANCING COCK
SK. SINK	CAP AT FLOOR
S.S. SERVICE SINK	H.B. HOSE BIBB
T.S. TUB SPOUT	A.P. ACCESS PANEL
TYP. TYPICAL	W.H. WALL HYDRANT
UR. URINAL	WATER (EXTERIOR)
W.H.A. WATER HAMMER ARRESTER	W.M. WASHING MACHINE
R.L. ROOF LEADER	

WATER HAMMER ARRESTER SCHEDULE					
P.D.I. UNITS	A	B	C	D	E
FIXTURE UNITS	1-11	12-32	33-60	61-113	114-154

PLUMBING SCHEDULE				
ITEM NO	DESCRIPTION	WATER SIZE	WASTE SIZE	REMARKS
P-4	LAVATORY	1/2"	1/2"	1 1/4" x 1 1/2"
P-5	LAVATORY	1/2"	1/2"	1 1/4" x 1 1/2"
P-6	SERVICE SINK	1/2"	1/2"	3"
P-7	LAUNDRY TUB	1/2"	1/2"	1 1/2"
P-8	SHOWER	1/2"	1/2"	2"
P-9	ELECTRIC WATER COOLER	1/2"	1/2"	1 1/4"
P-10	WATER CLOSET	1/2"	1/2"	4"

J. N. PEASE ASSOCIATES
 ARCHITECTS - ENGINEERS - PLANNERS
 CHARLOTTE NORTH CAROLINA

DEPARTMENT OF THE NAVY
ATLANTIC DIVISION
 NAVAL STATION
 MARINE CORPS BASE
 NORTH CAROLINA
 CAMP LEJEUNE

DES. 11-15 DR. 11-15 CHK. 11-15

PROJ. MGR. D.M.M. CH. ENGR. DATE: 25 APRIL 75

SUBMITTED BY: *R. B. Pease* FIRM MEMBER RVD PRINCIPAL

APPROVED: *[Signature]* DATE: 25 APR 75

OFFICER IN CHARGE: *[Signature]* DATE: 25 APR 75

FOR EFD FOR COMMANDER, NAVFAC

P-15

SIZE: **F** CODE IDENT. NO.: **80091**

CONSTR. CONTR. NO. **N22470-74-B-1587**

SCALE: _____ SPEC. **CS-74-1587** SHEET **109** OF **135**

