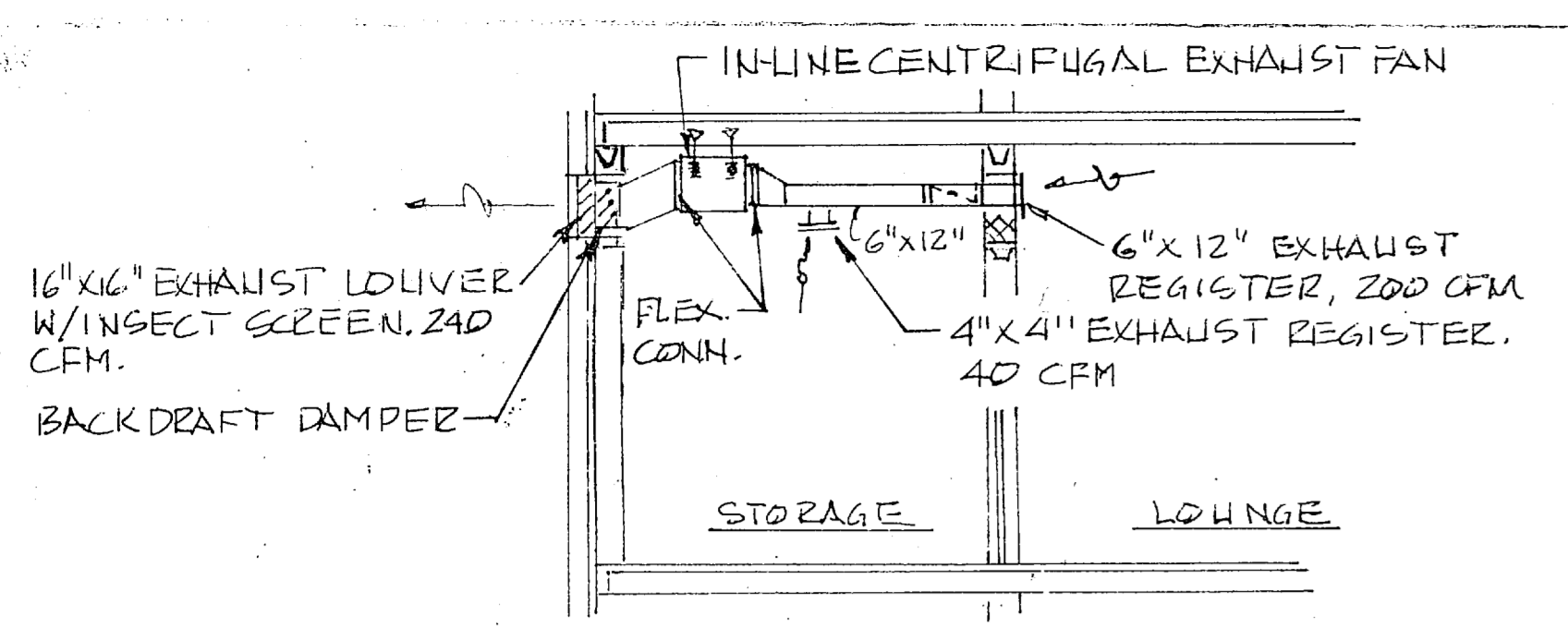
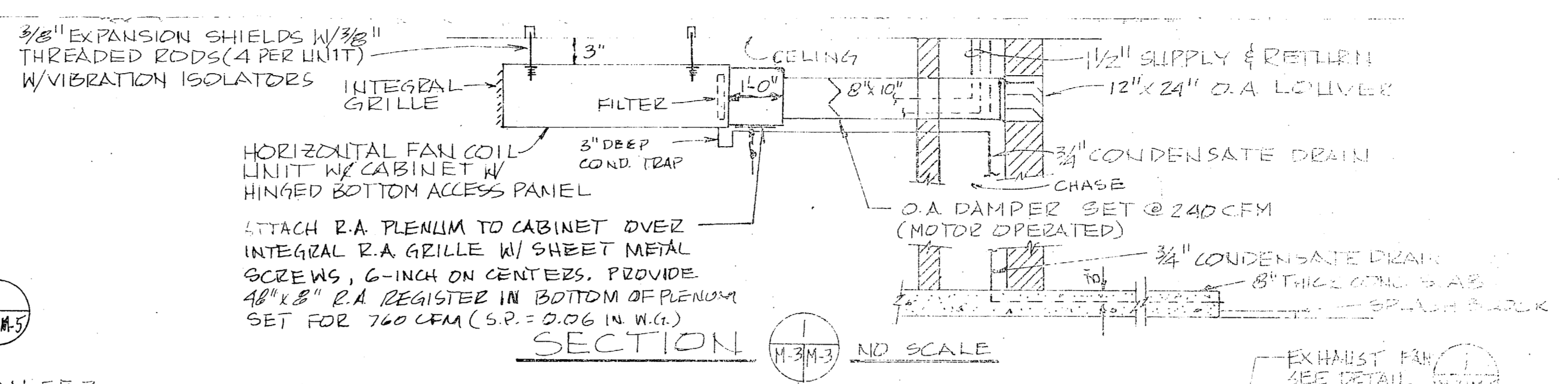


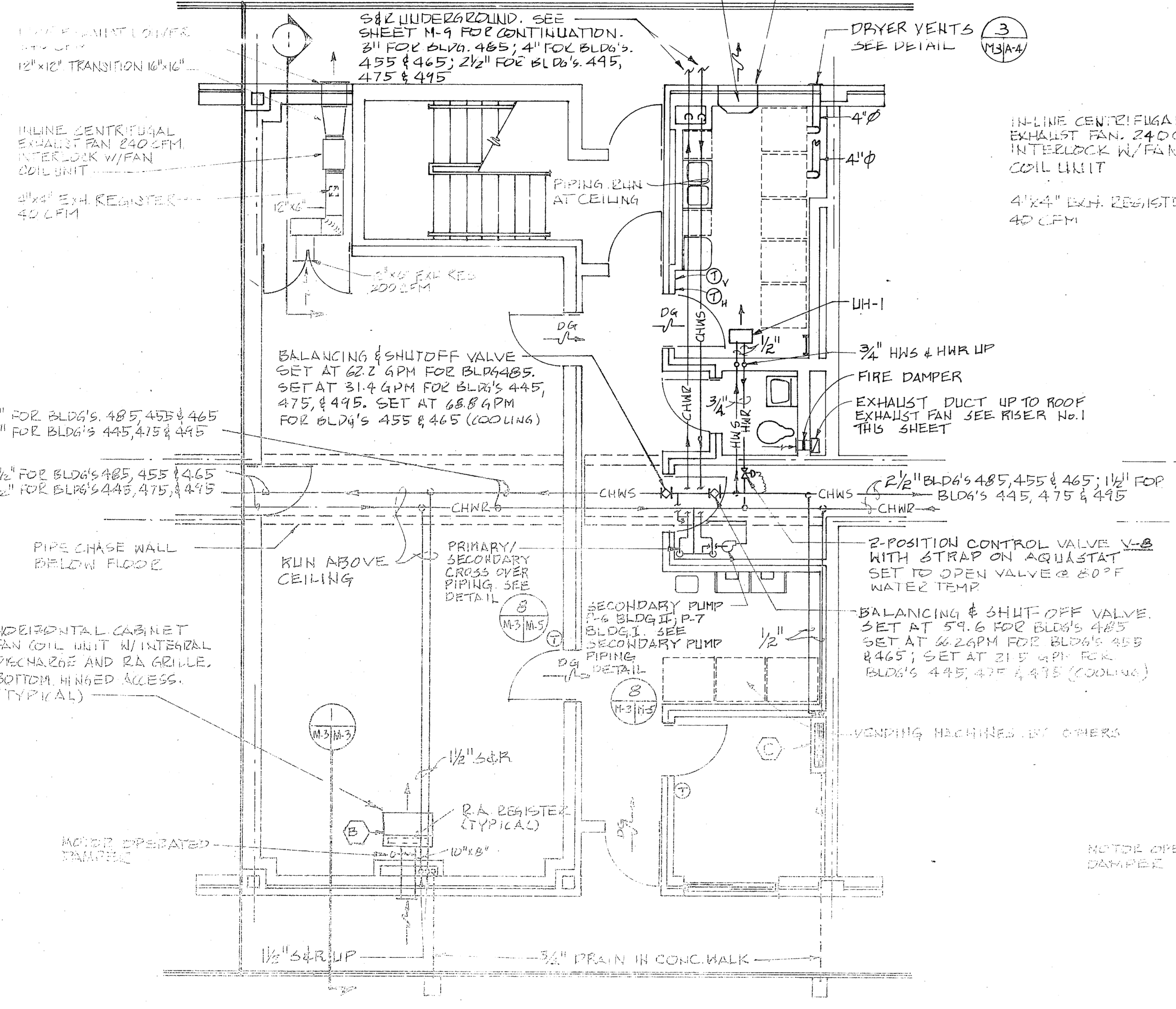
REVISAS-BUILT



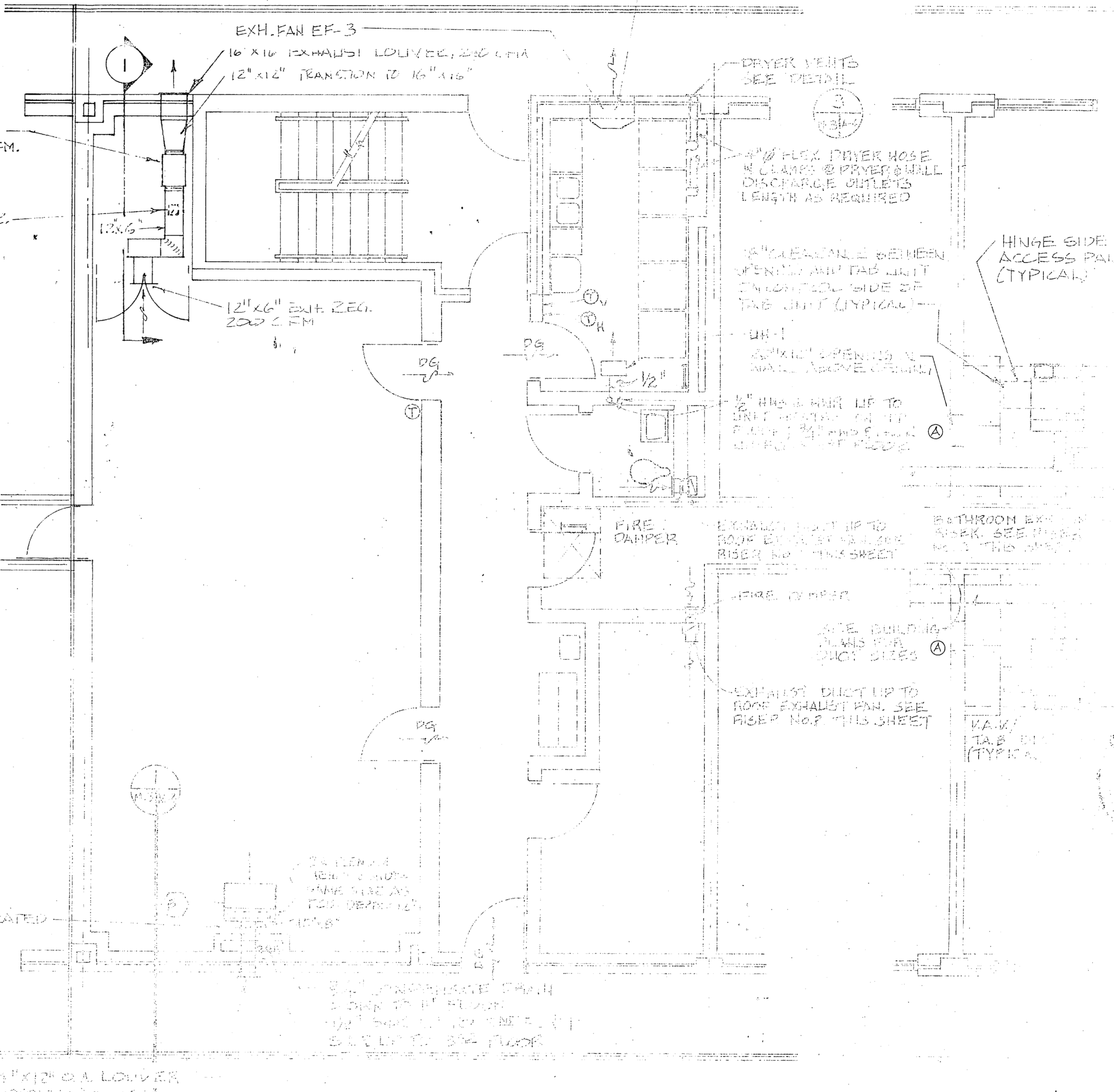
SECTION 1 SCALE: 1/2" = 1'-0"



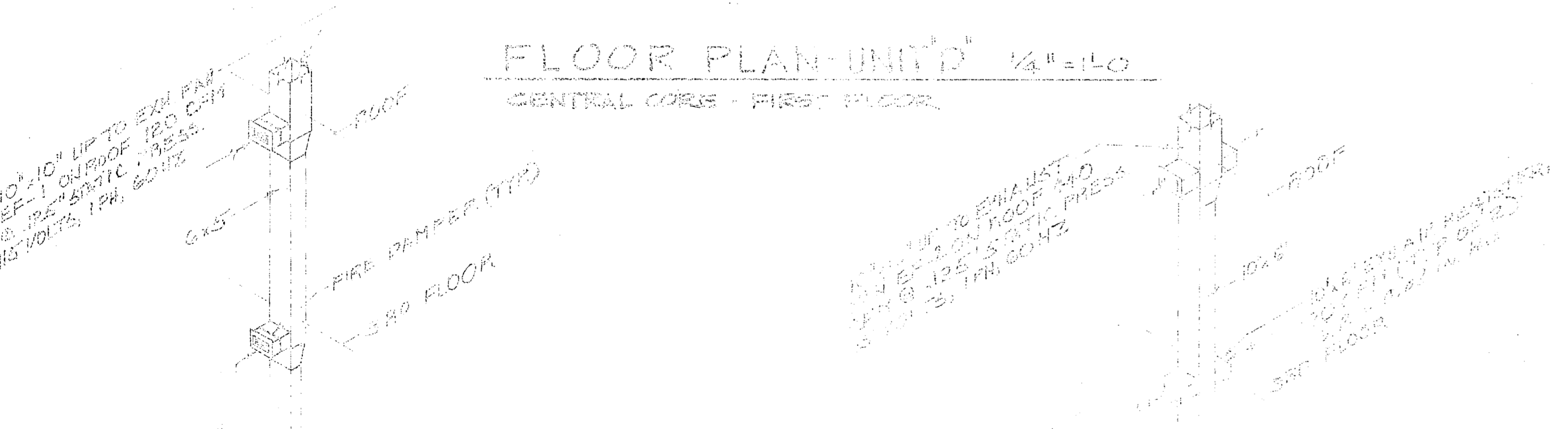
SECTION 2 NO SCALE



FLOOR PLAN - UNIT D 1/4" = 1'-0"
CENTRAL CORE - FIRST FLOOR



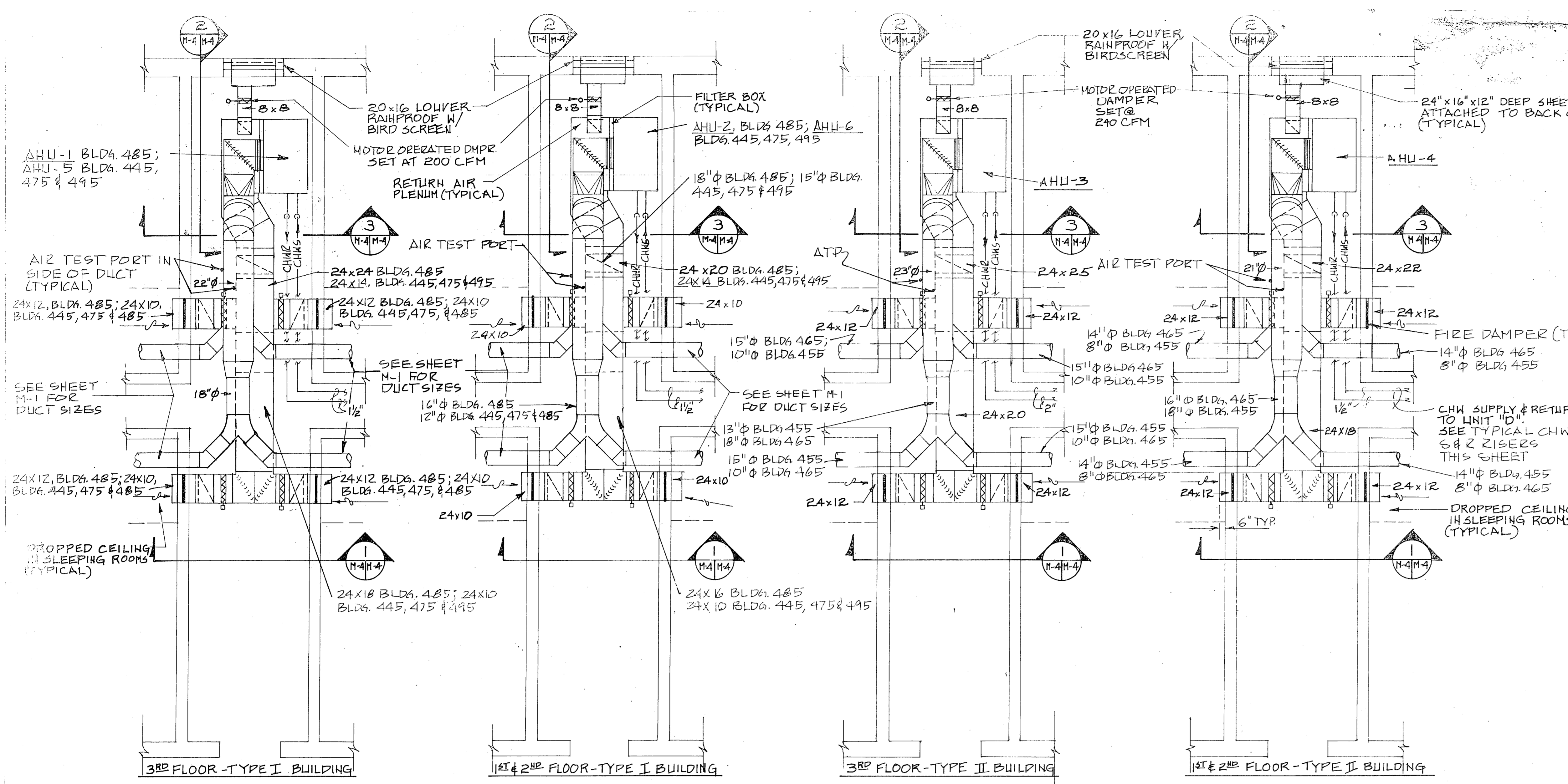
FLOOR PLAN - UNIT C 1/4" = 1'-0"
CENTRAL CORE - SECOND FLOOR



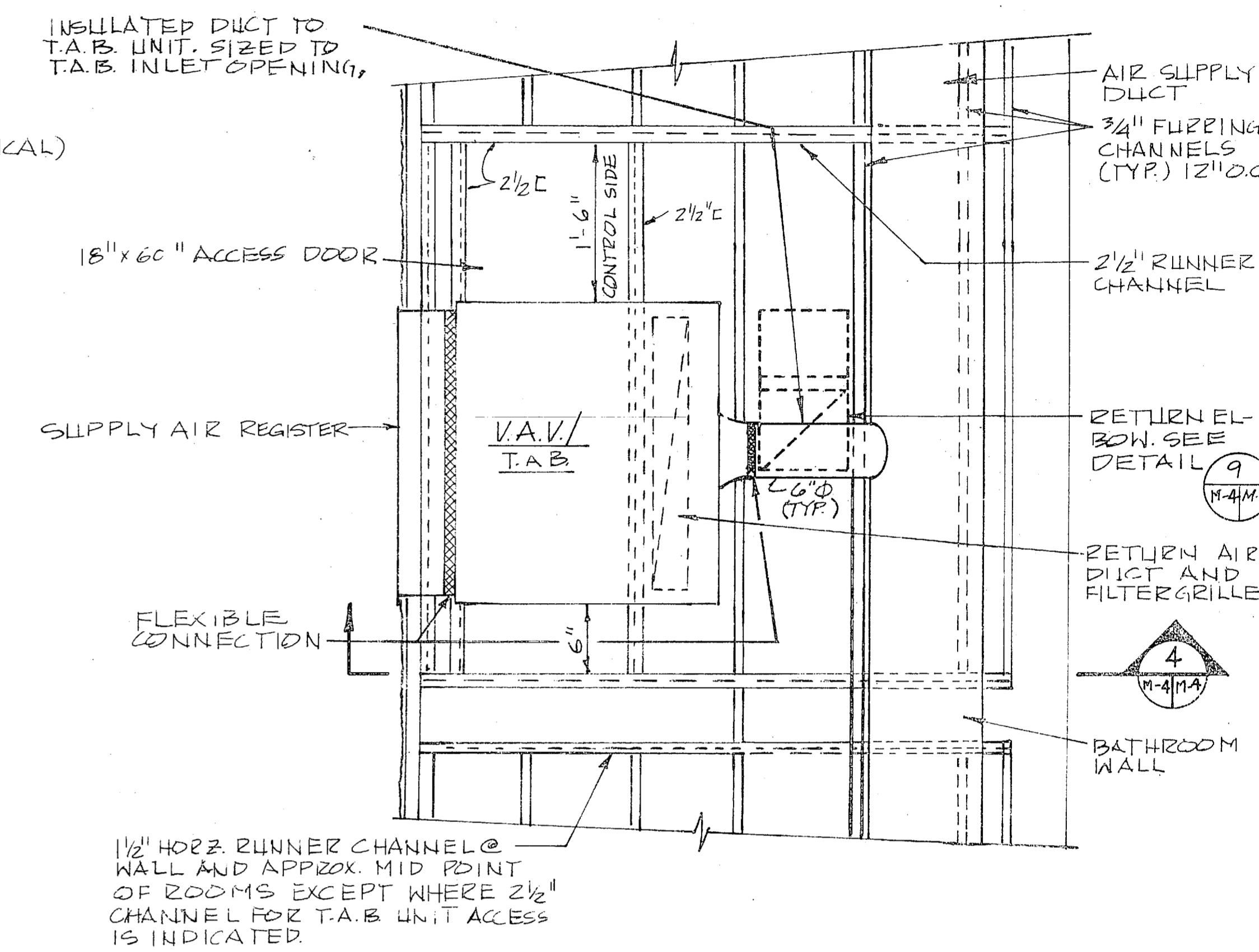
RECORD ON LETTER

HP 476
HP 475-475



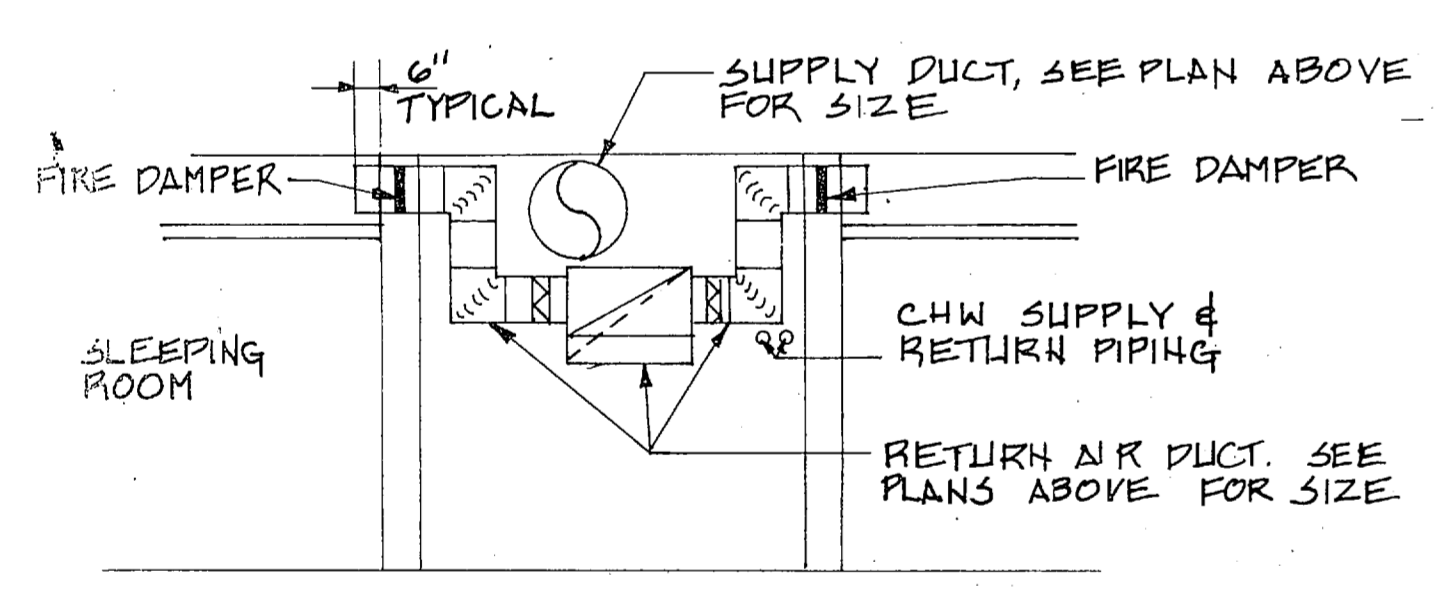


PART. FLOOR PLANS-MECHANICAL EQUIPMENT SPACE-UNIT "H"
SCALE 1/4"=1'-0"

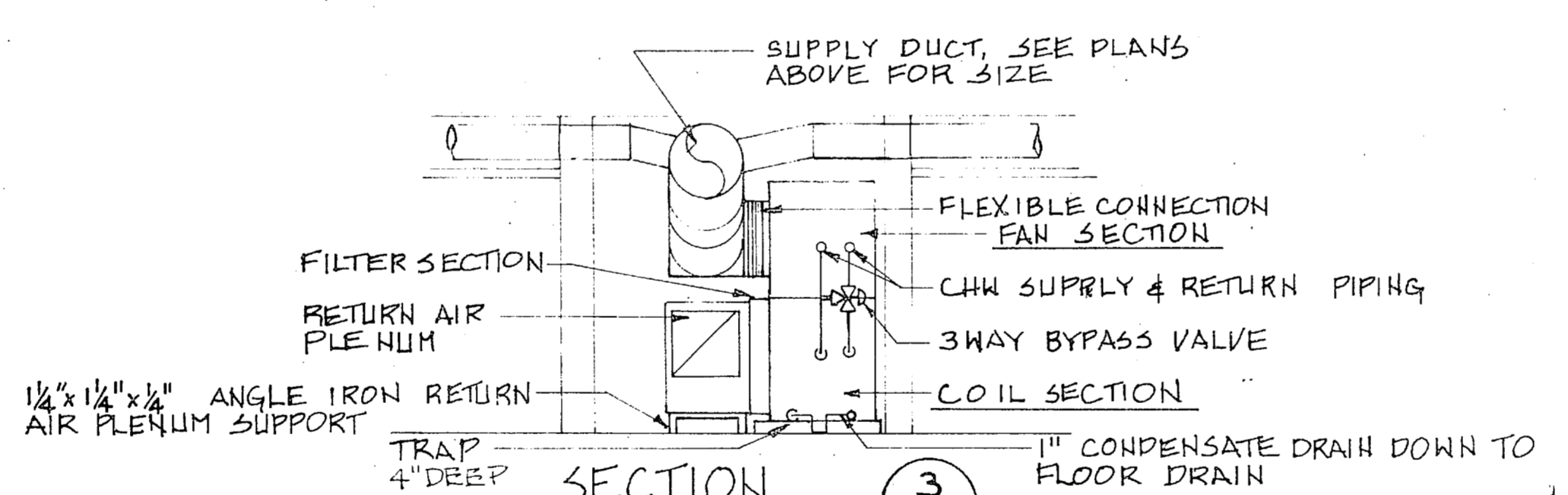


TYPICAL TERMINAL AIR BLENDER (TAB) PART. PLAN
SCALE: 1"=1'-0"

NOTE: SEE FLOOR PLAN UNIT "B", SHEET M-3 FOR ORIENTATION OF TAB UNITS AND ACCESS DOORS

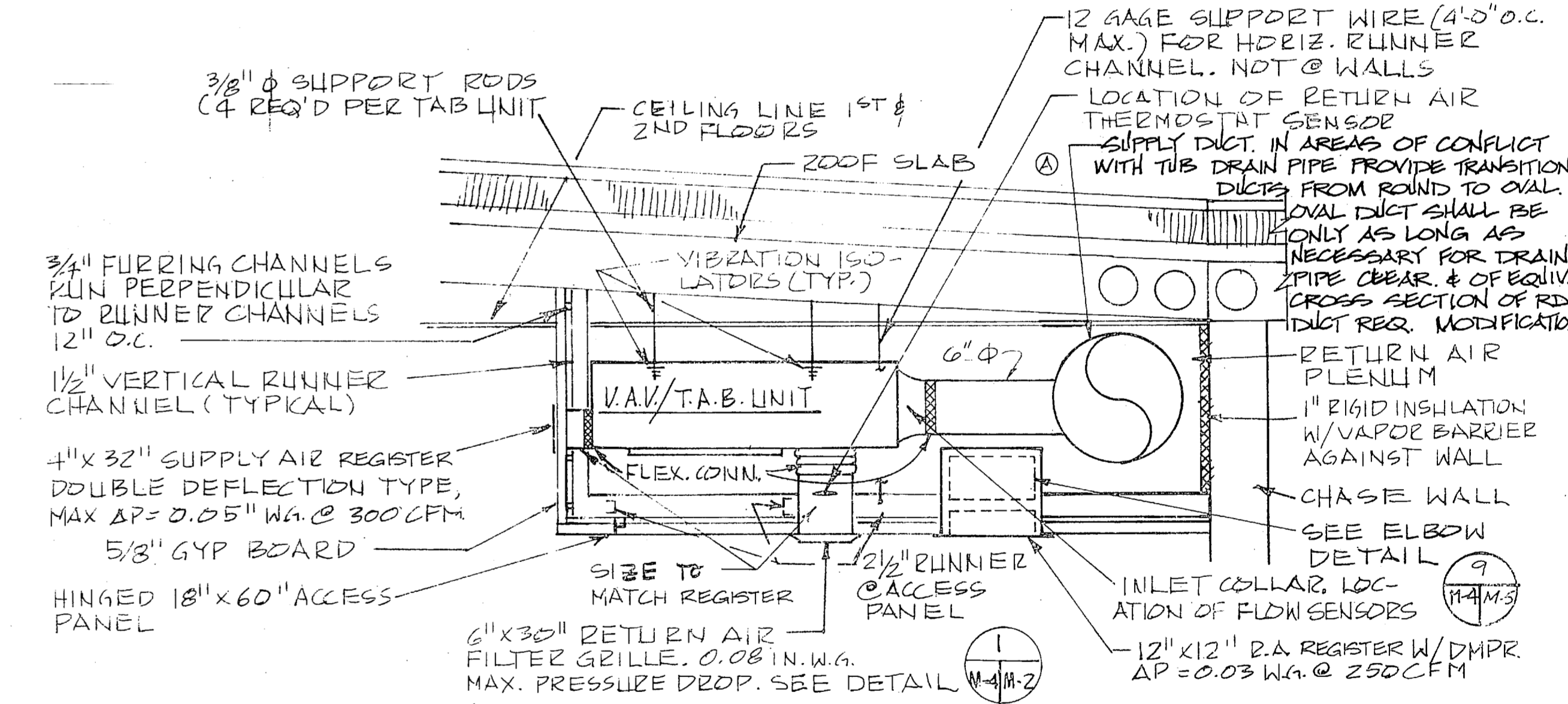


SECTION 1
SCALE 1/4"=1'-0"



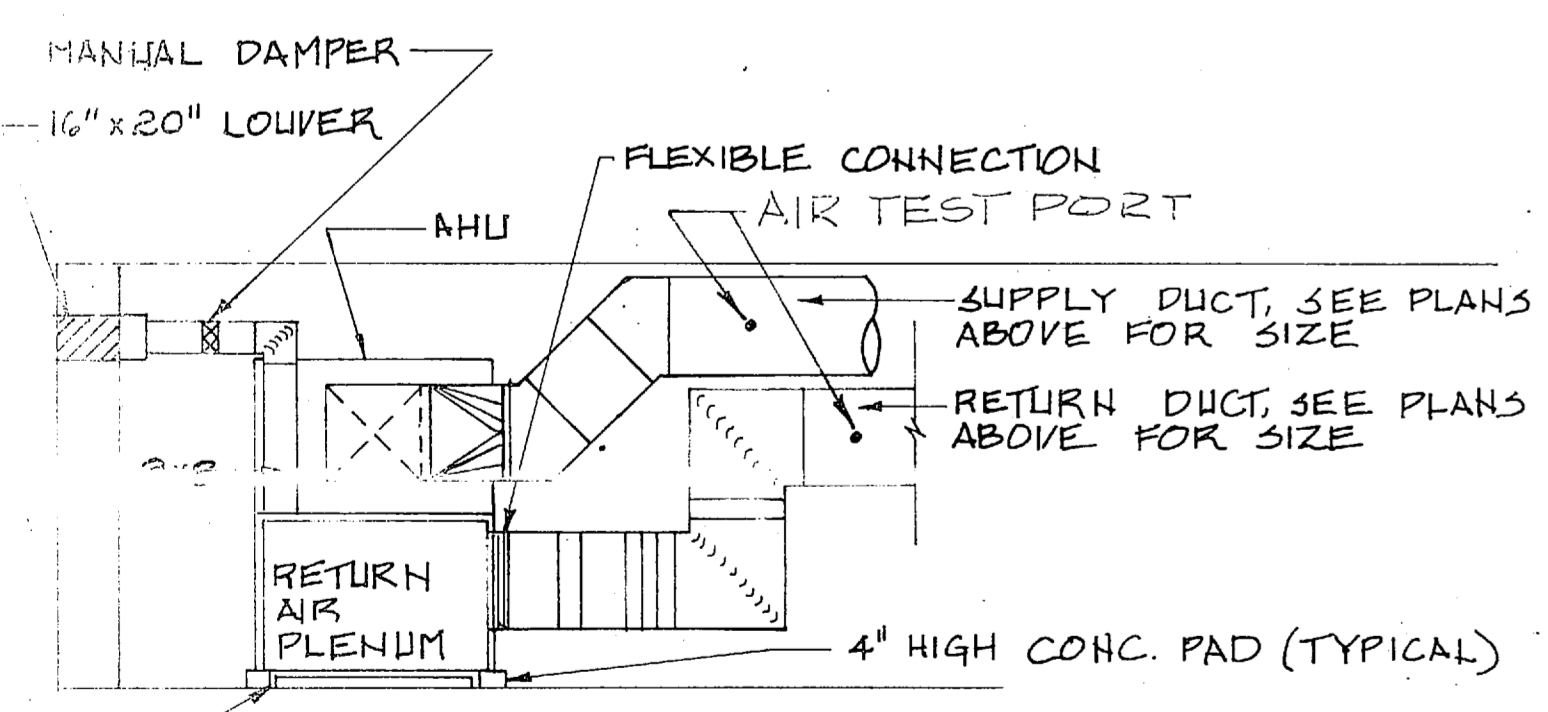
SECTION 3
SCALE 1/4"=1'-0"

NOTE: RETURN AIR DUCT NOT SHOWN FOR CLARITY

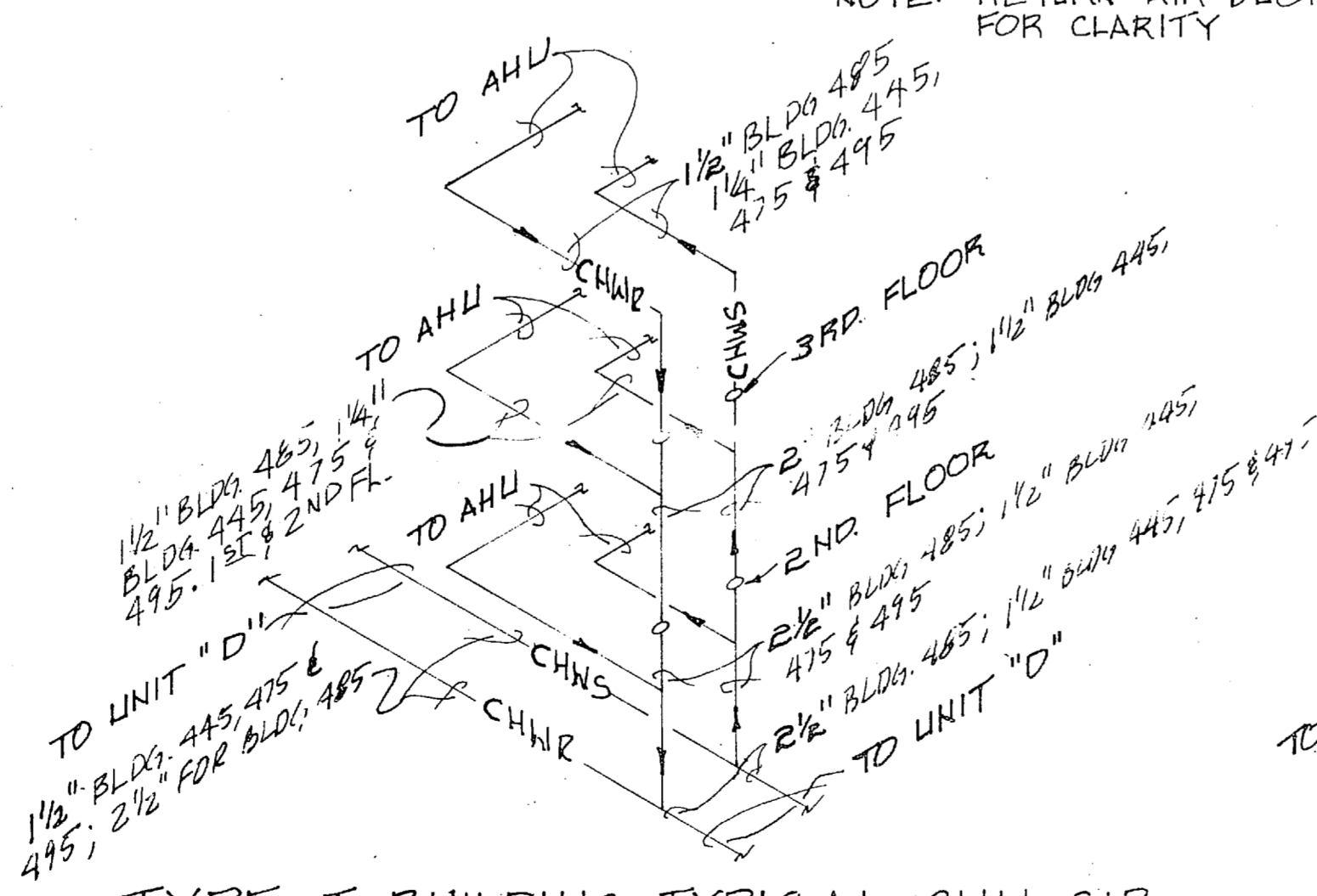


SECTION 4
SCALE: 1"=1'-0"

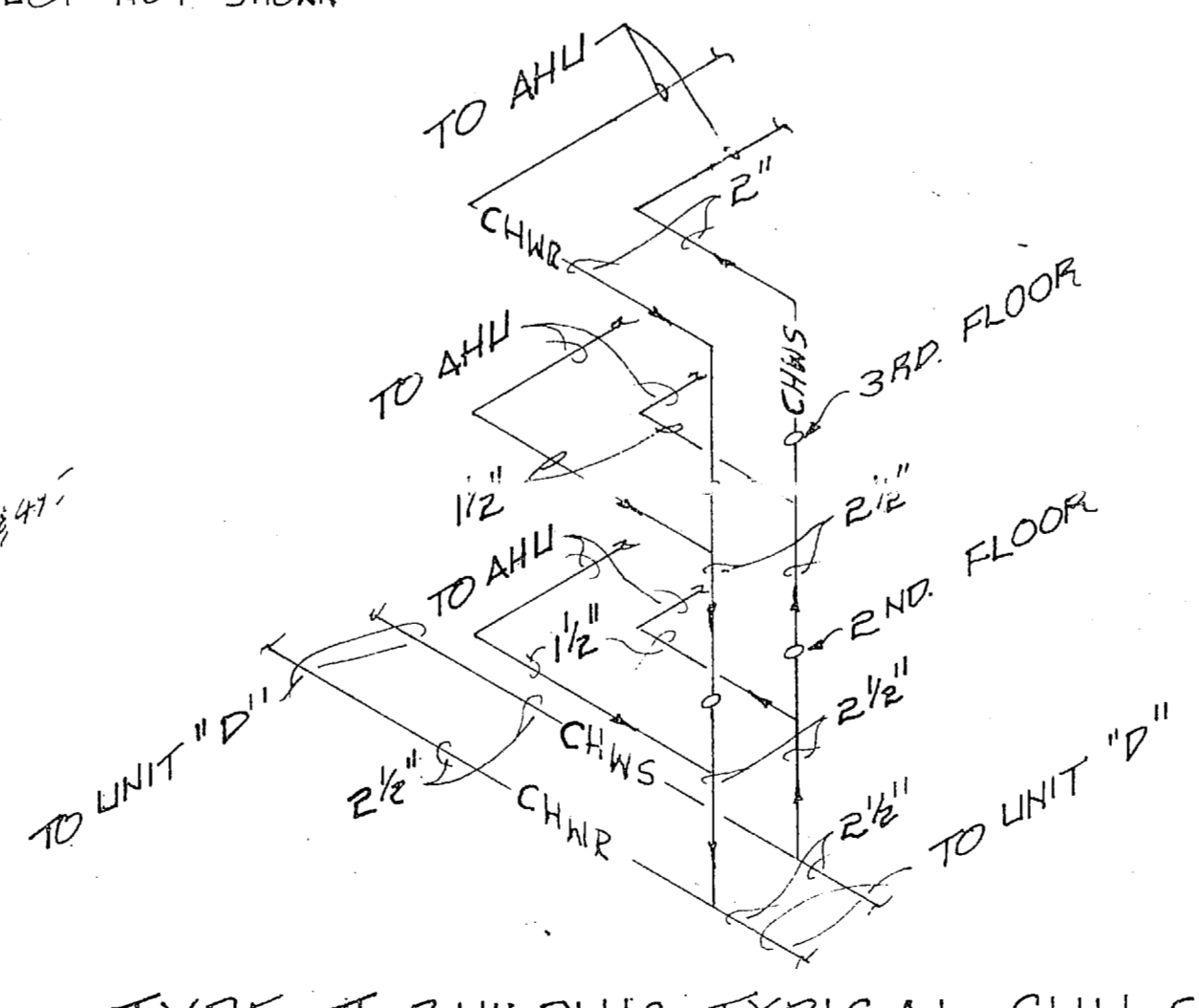
NOTE: SUPPLY & RETURN AIR REGISTER MAY BE SIZED TO SUIT DISCHARGE AND RETURN OPENINGS OF TAB UNIT PROVIDED STATIC PRESSURES ARE NOT EXCEEDED



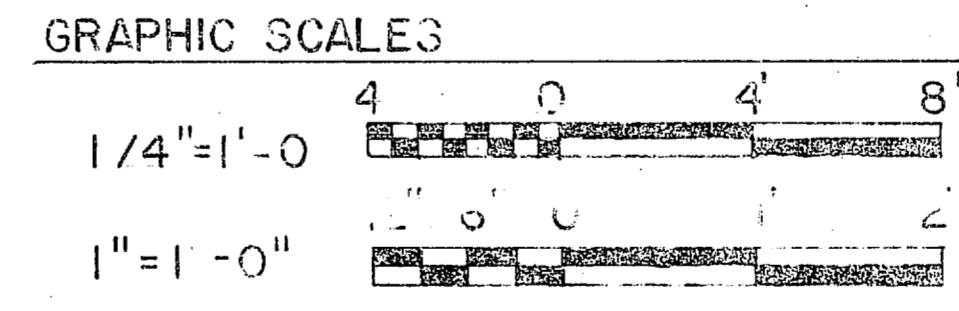
SECTION 2
SCALE 1/4"=1'-0"



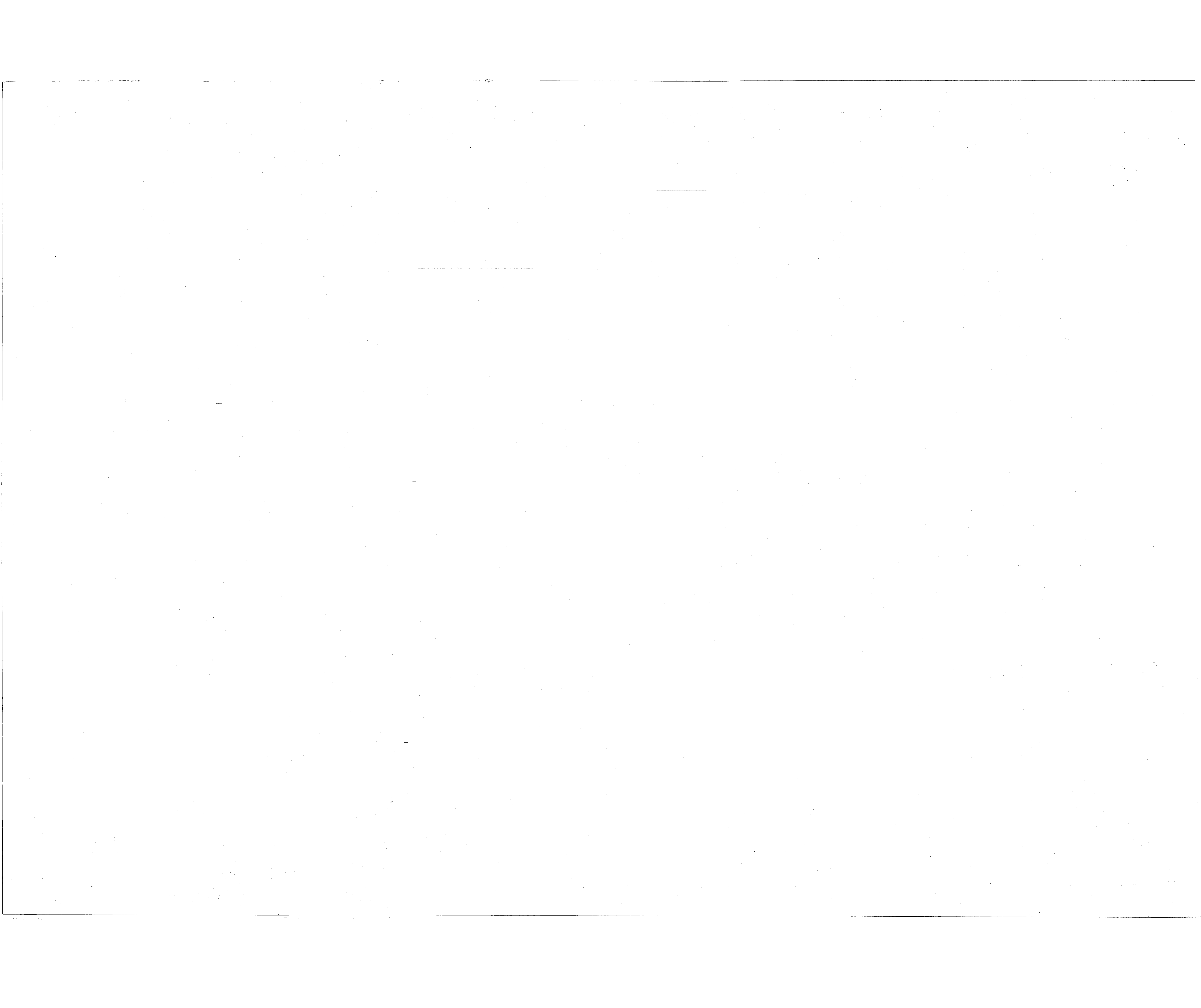
TYPE I BUILDING TYPICAL CHW S&R RISER
NO SCALE

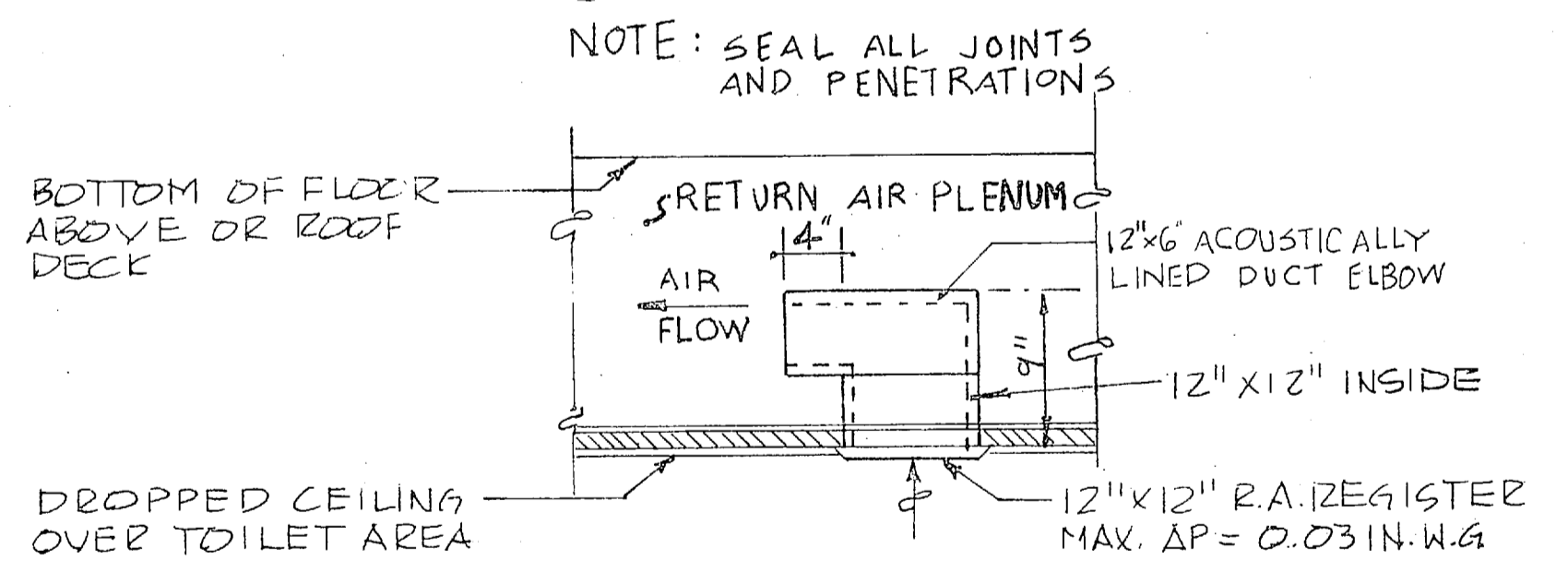
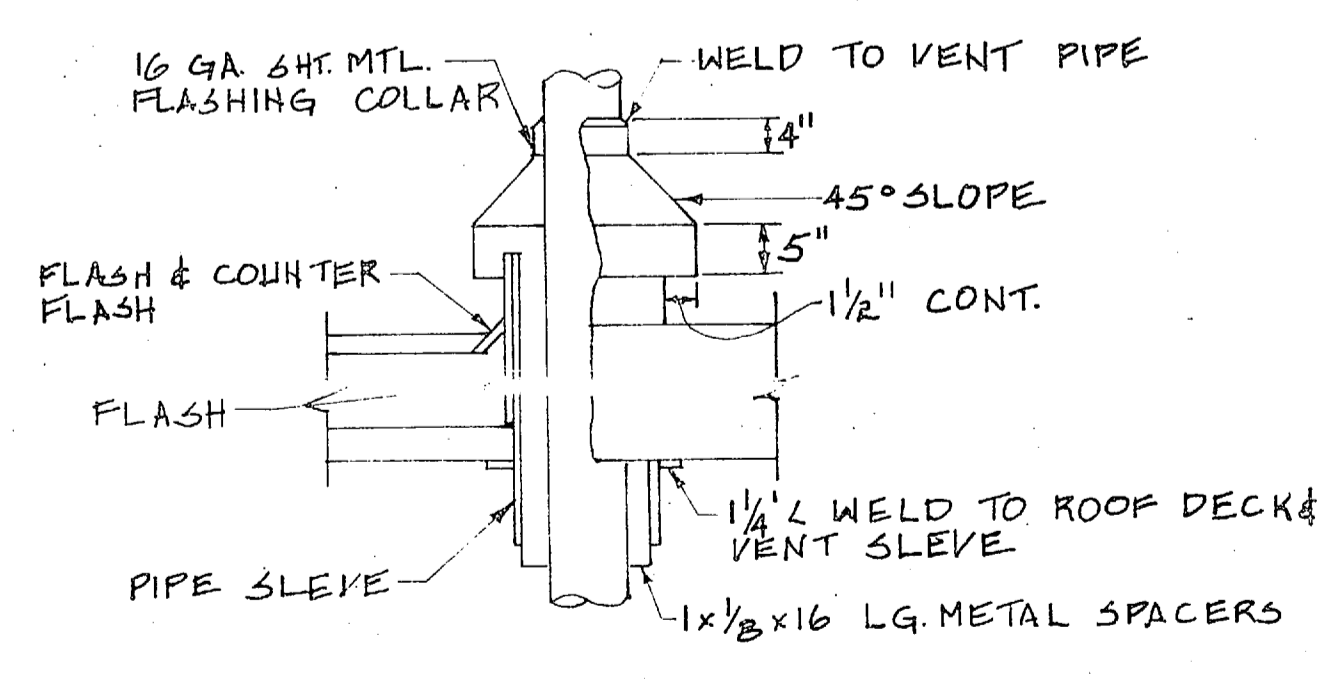
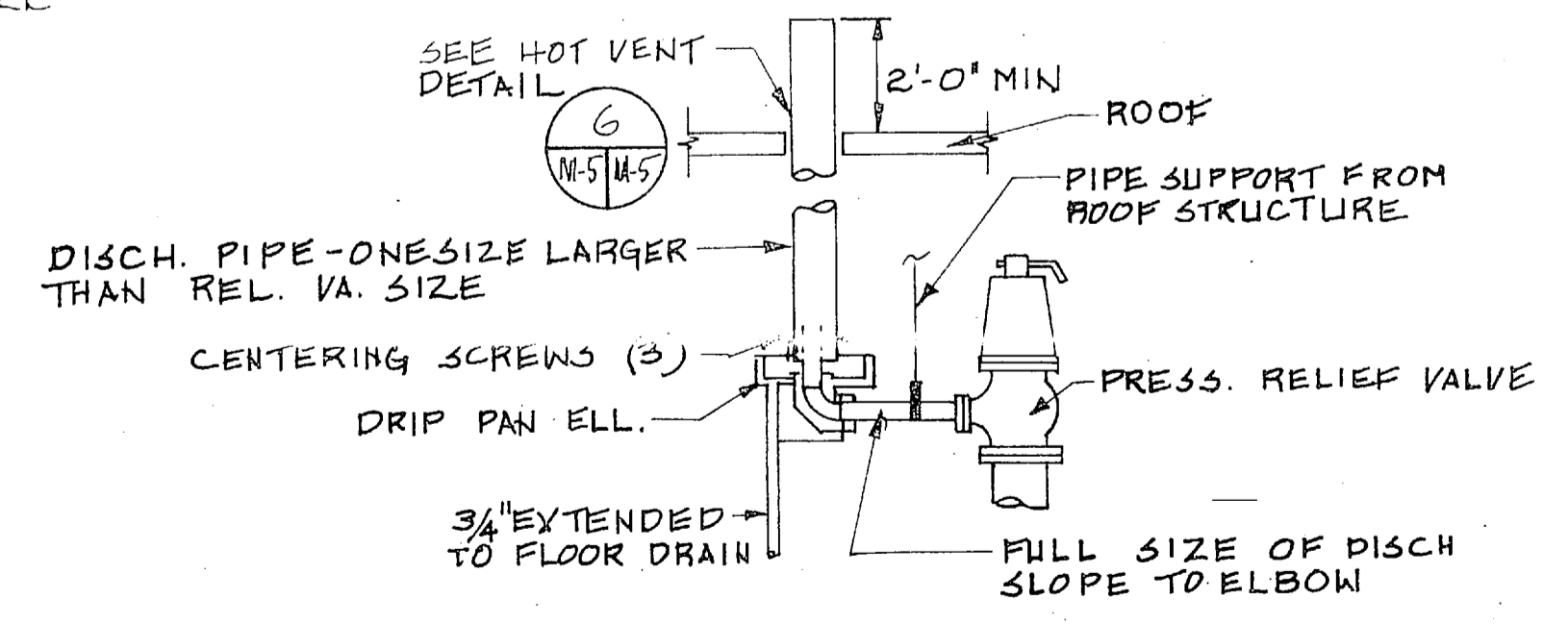
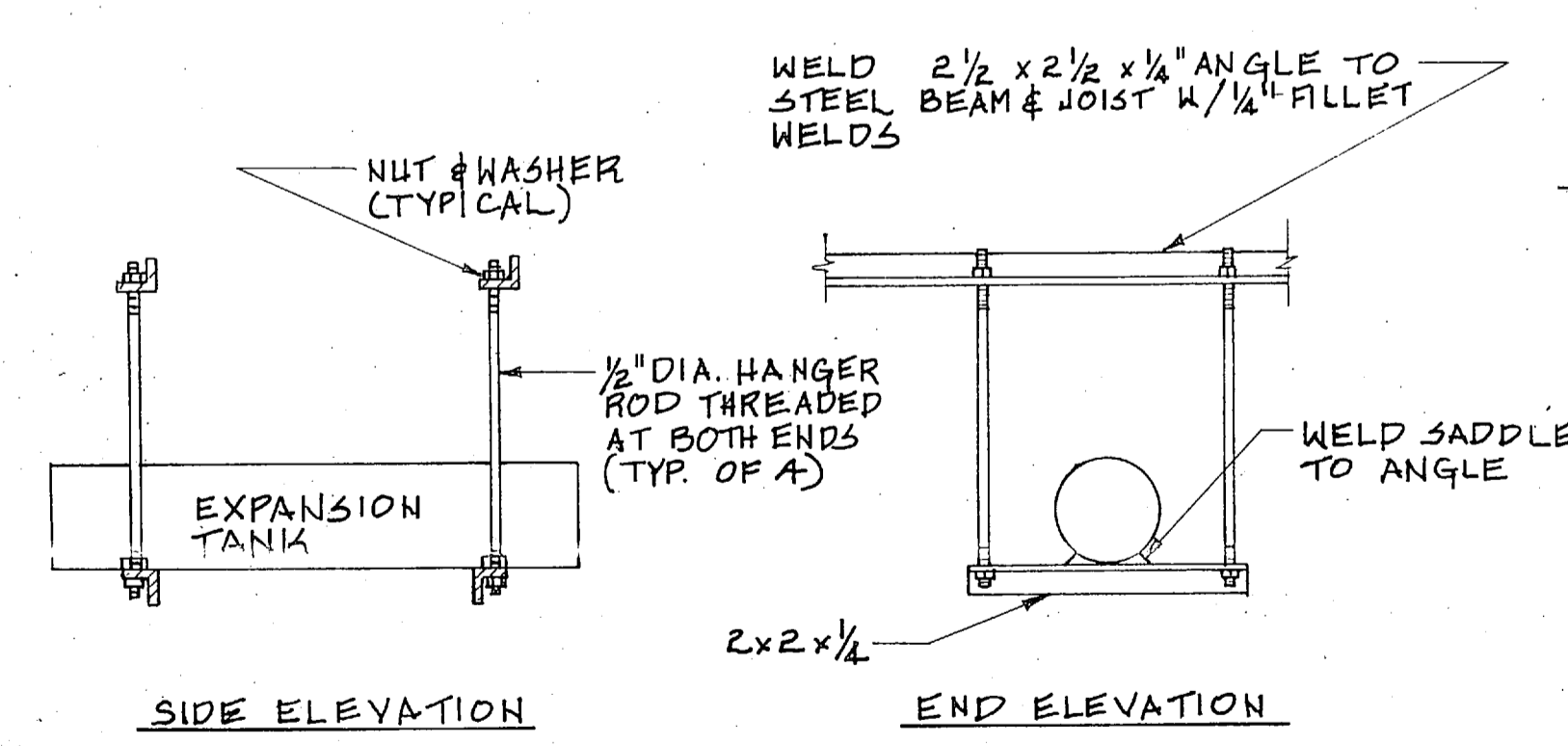
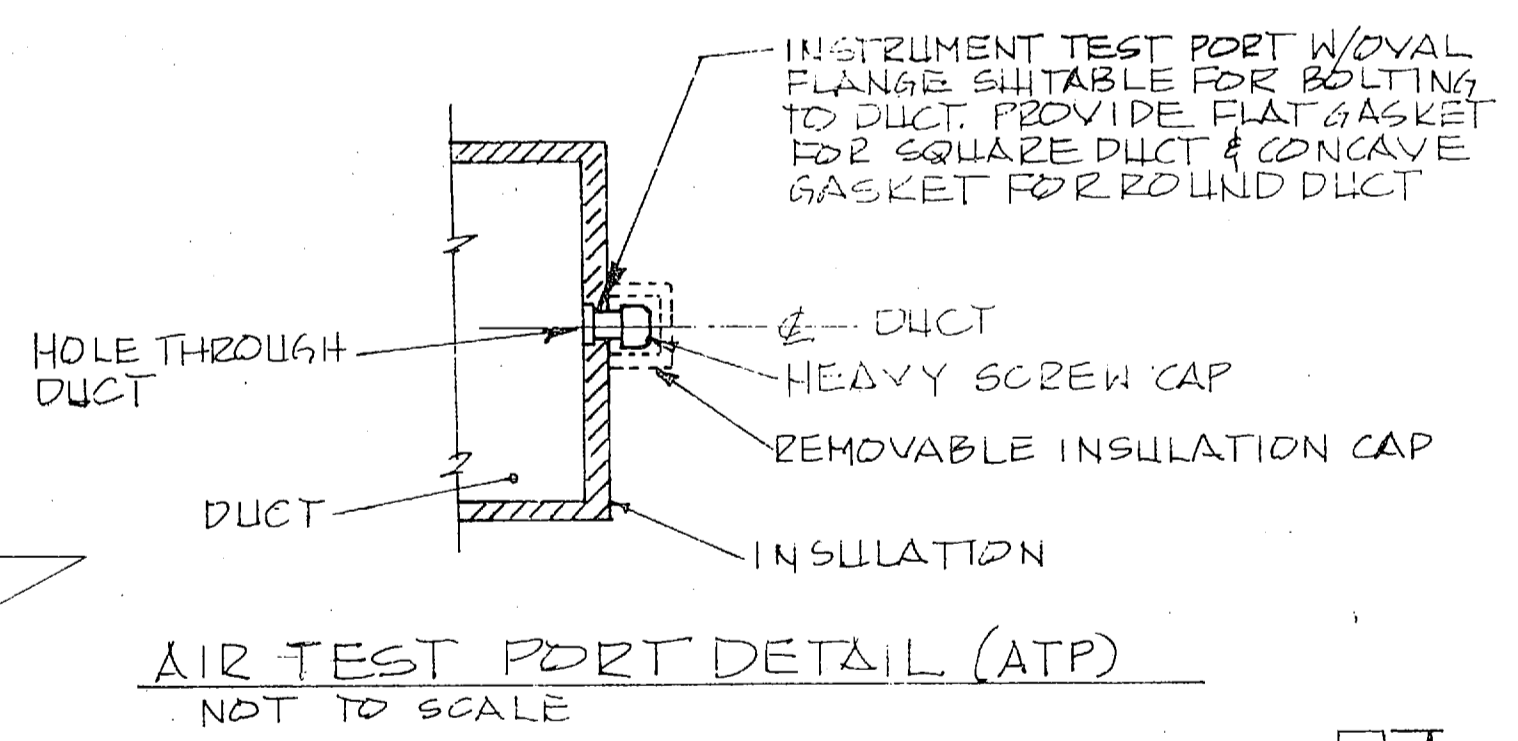
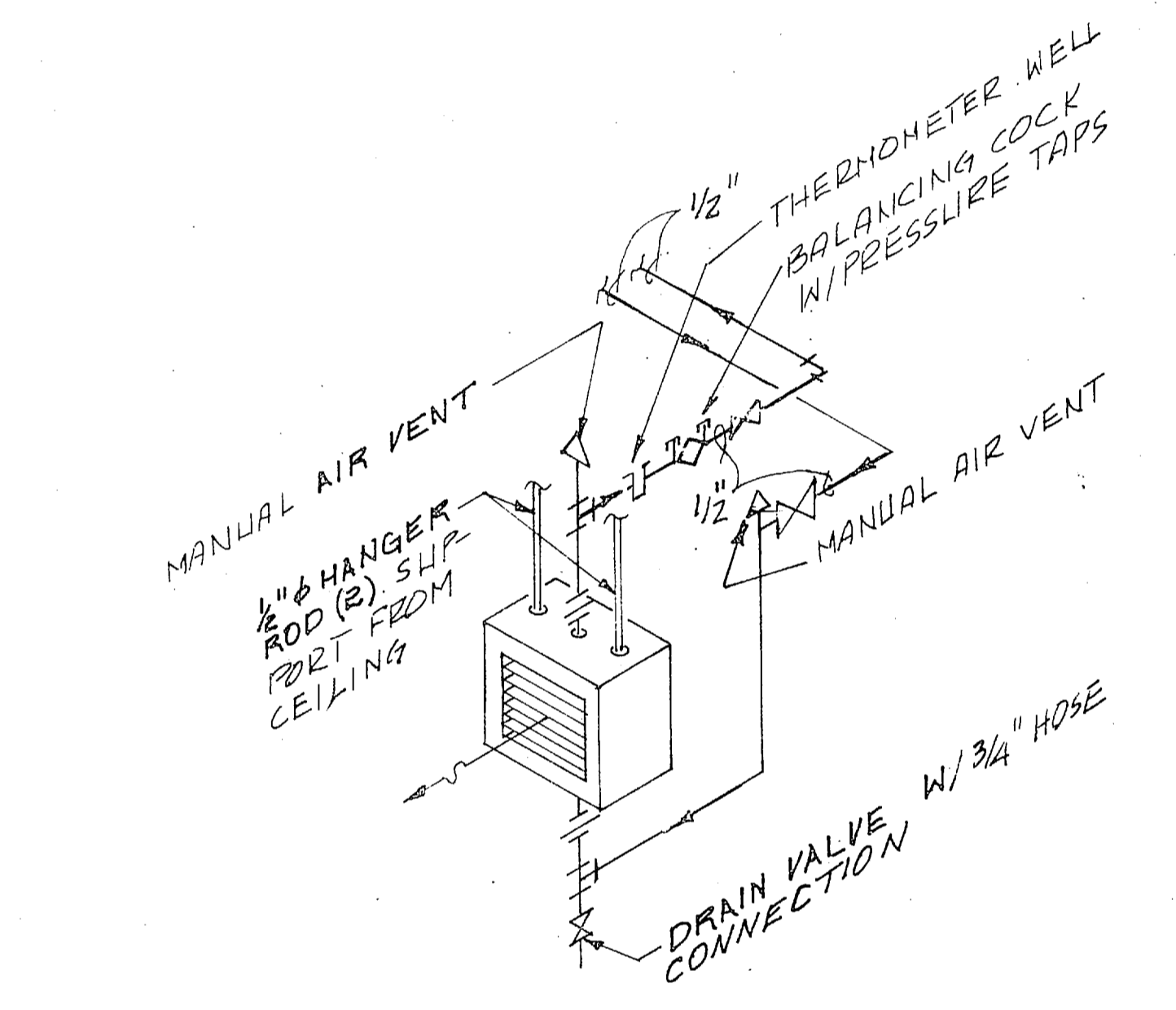
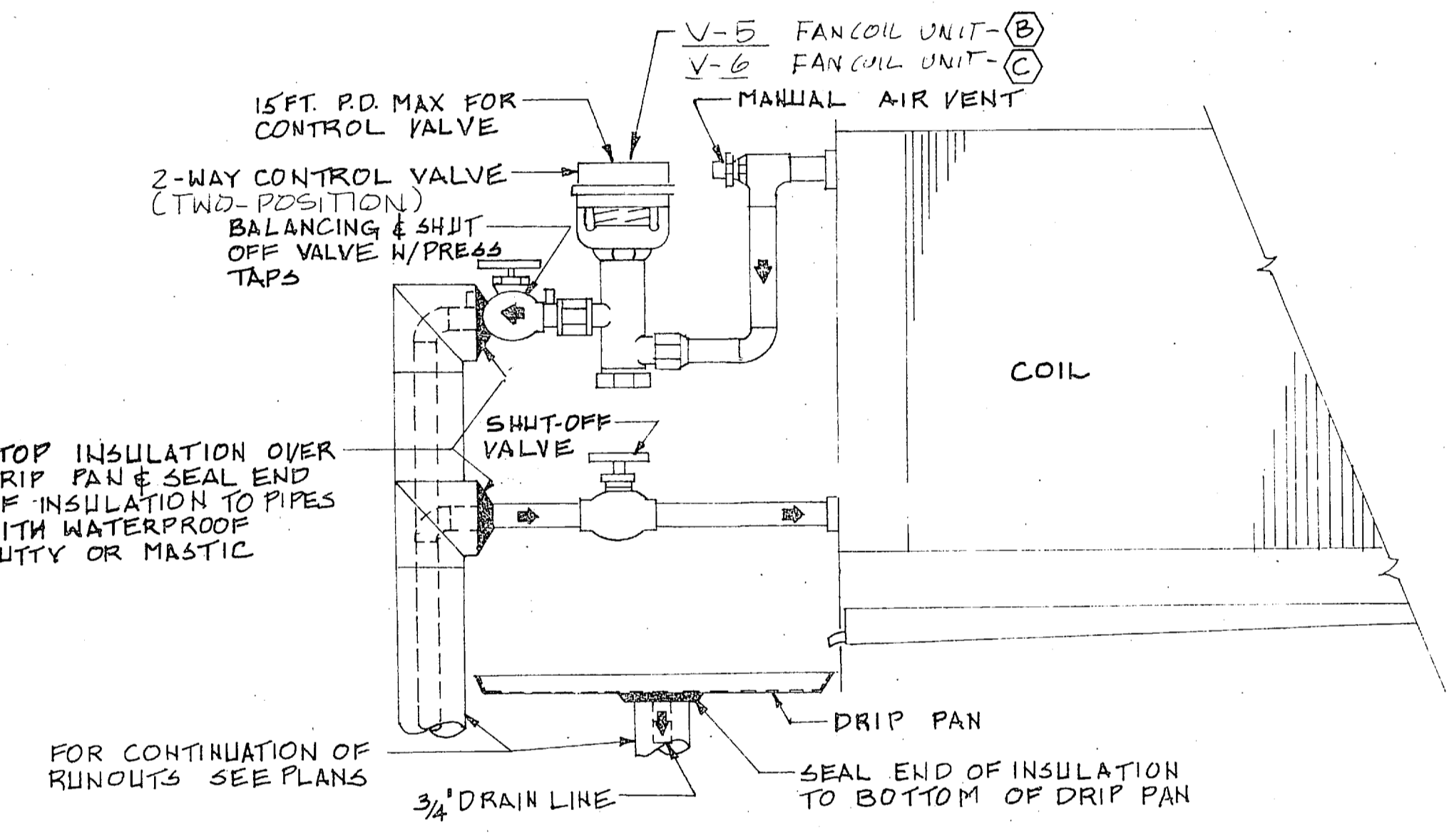
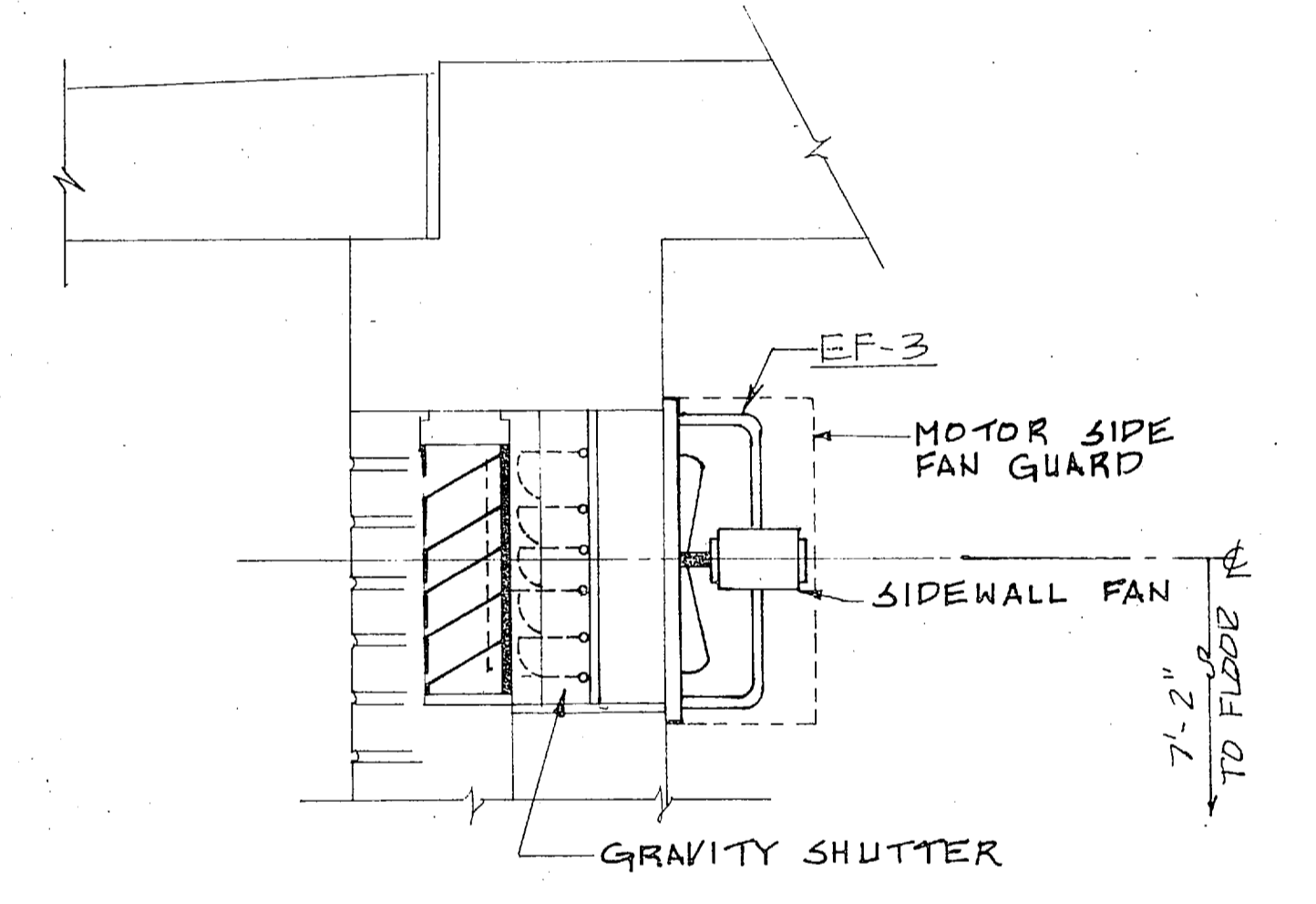
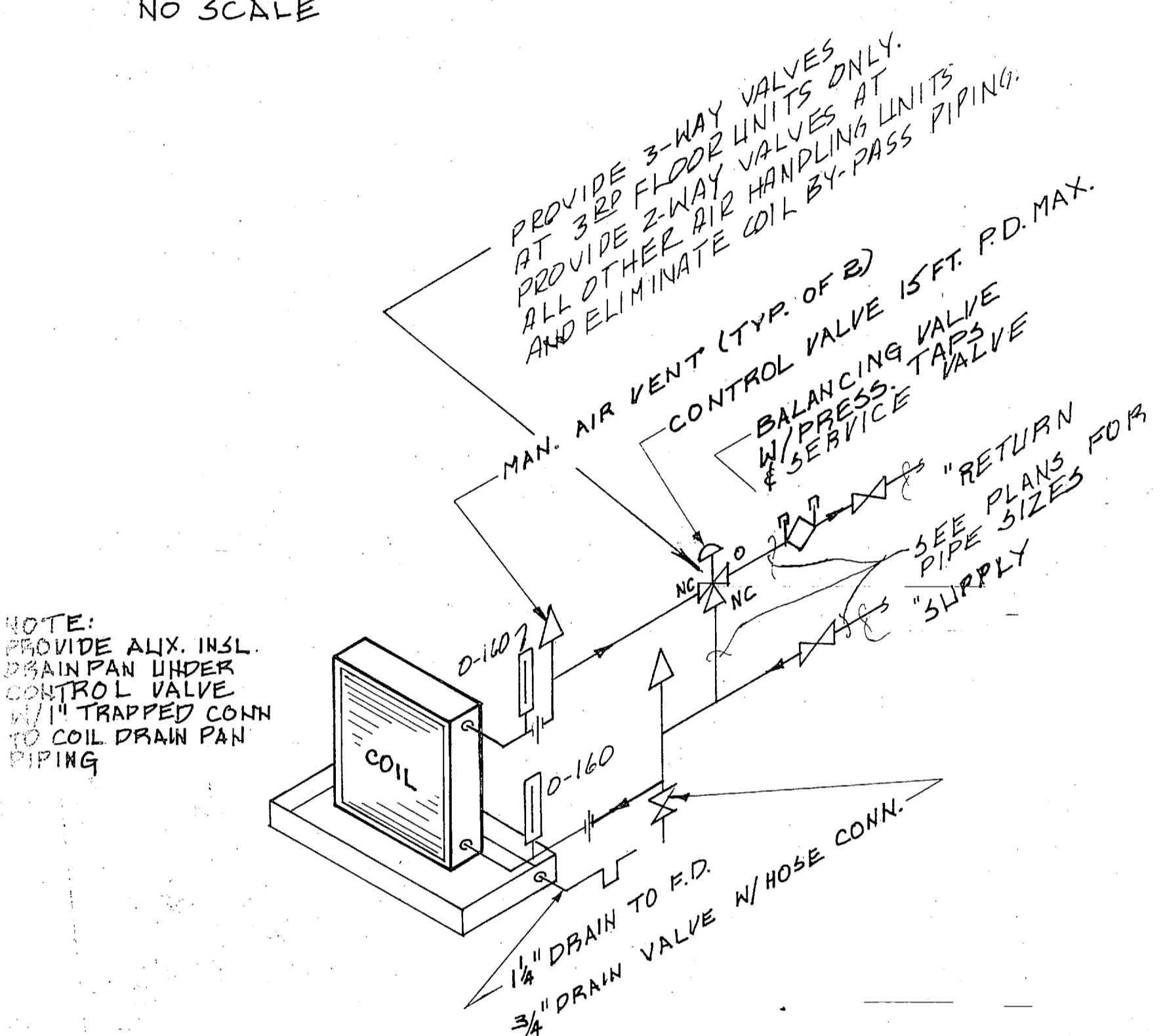
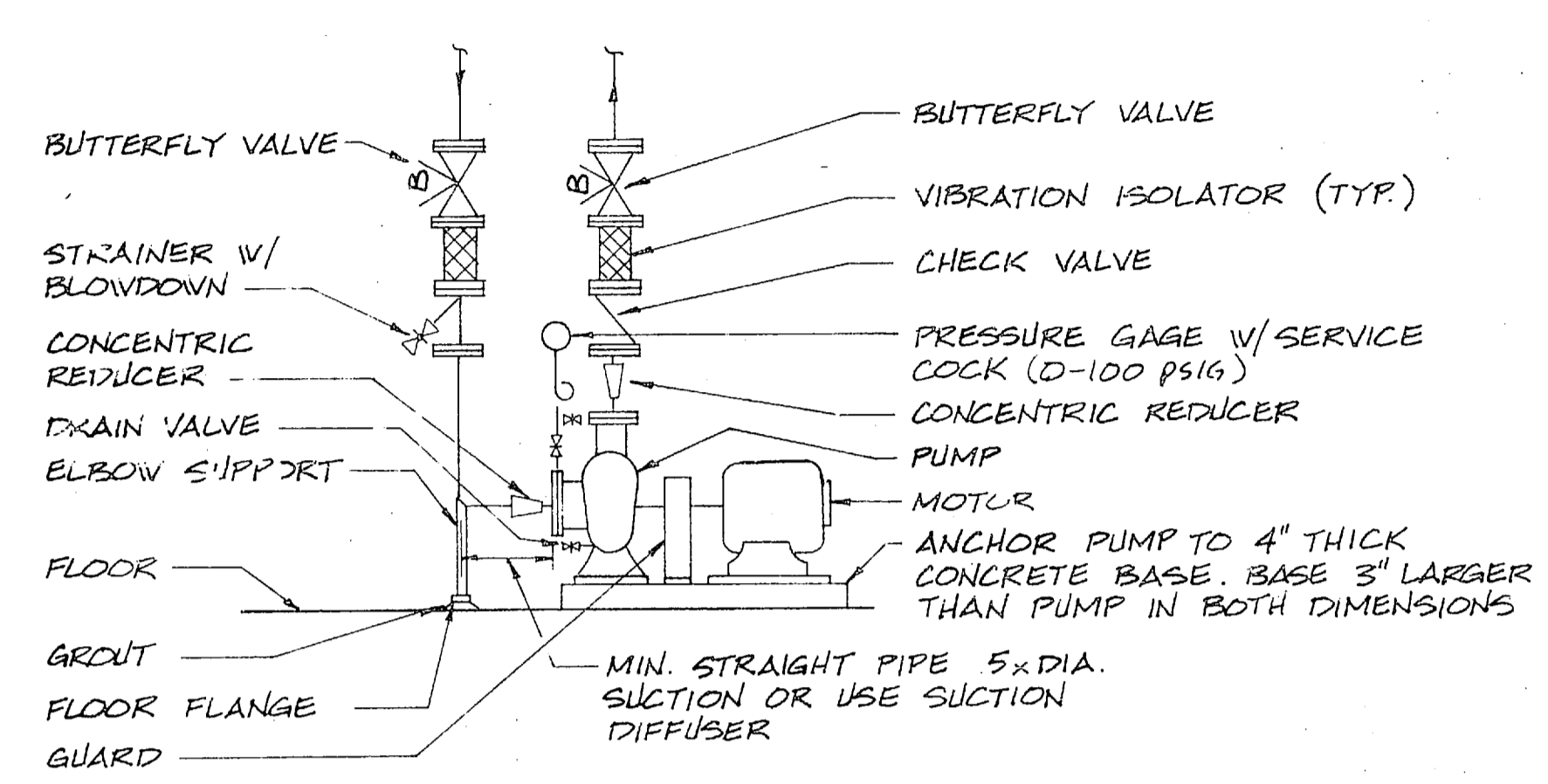
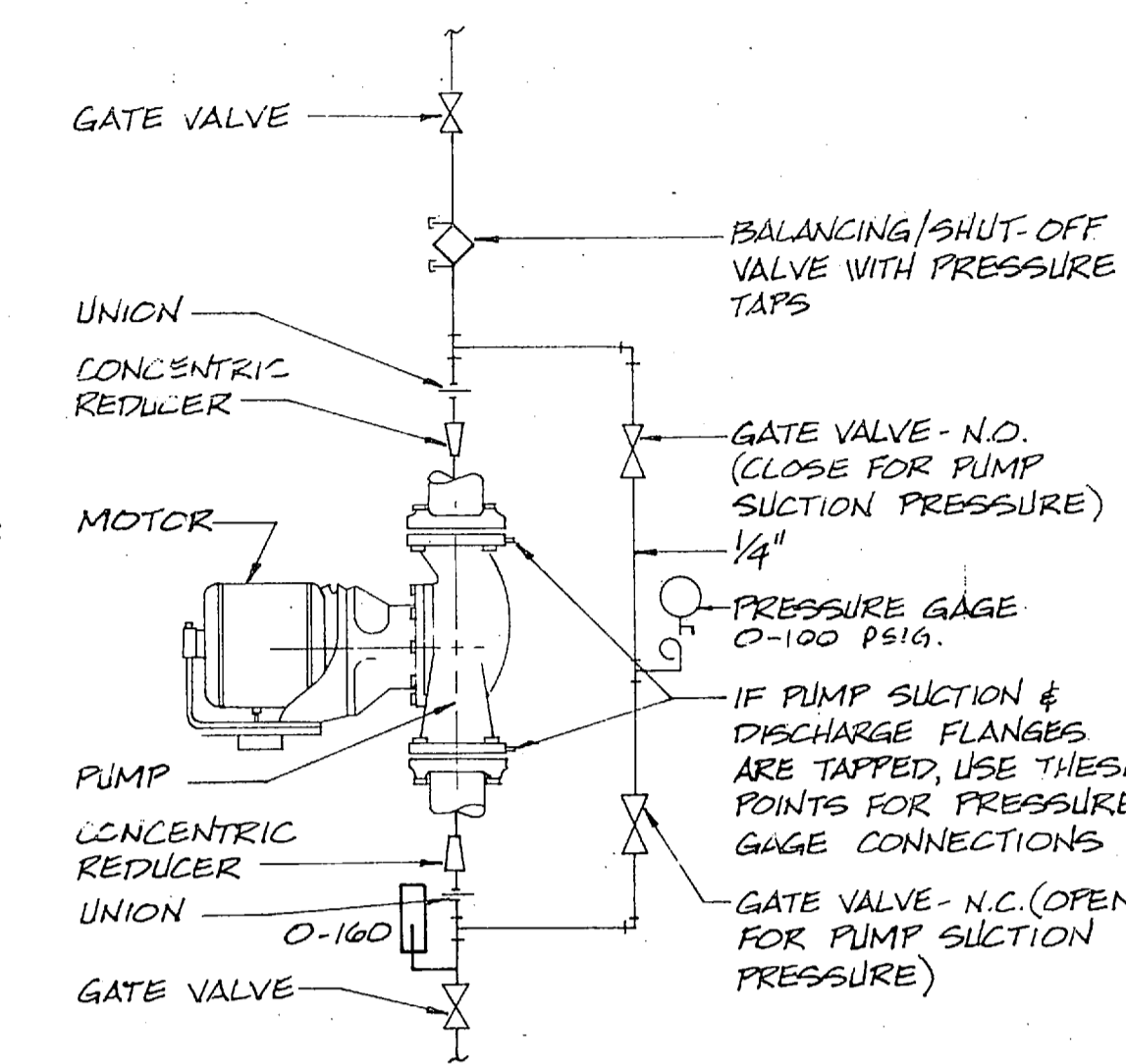
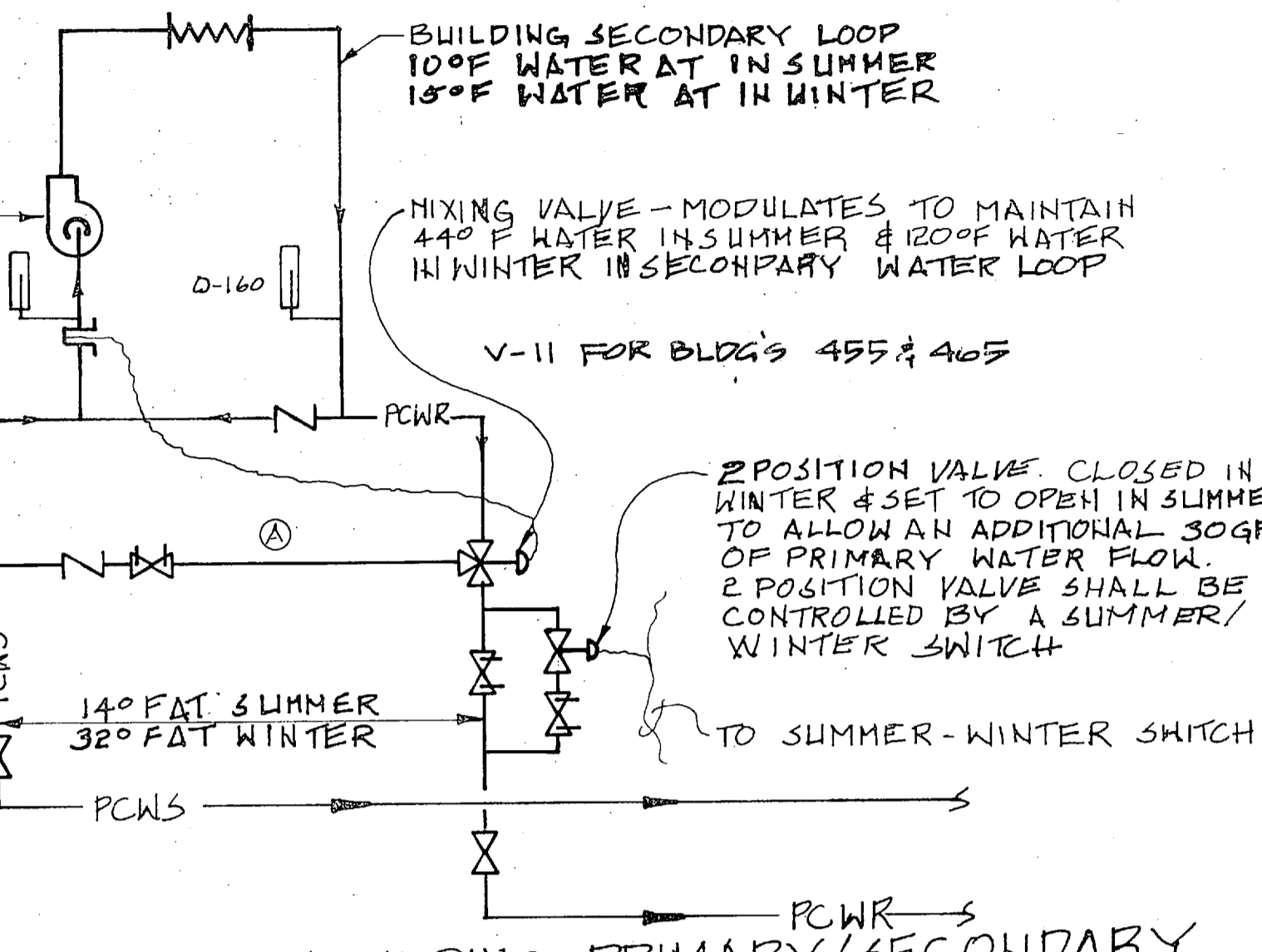
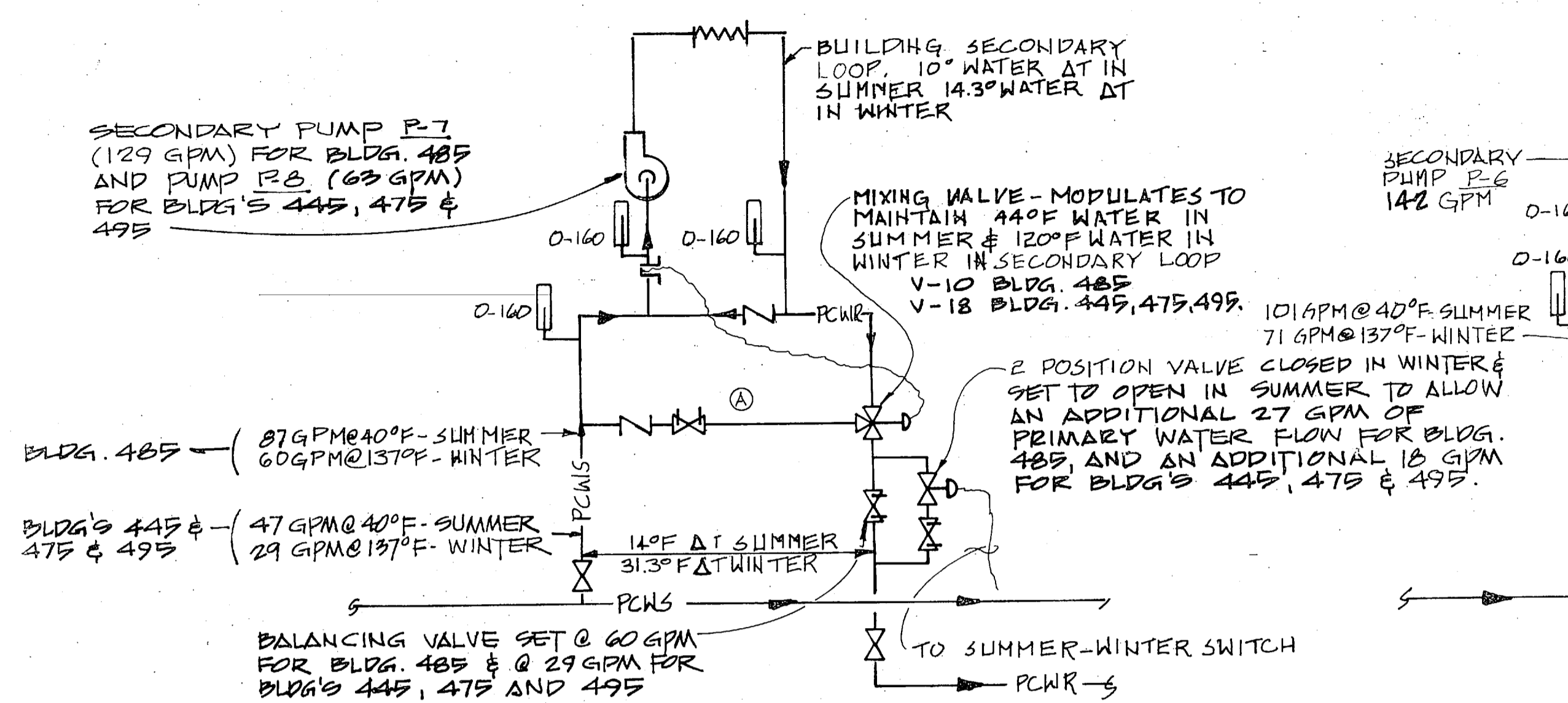


TYPE II BUILDING TYPICAL CHW S&R RISER
NO SCALE

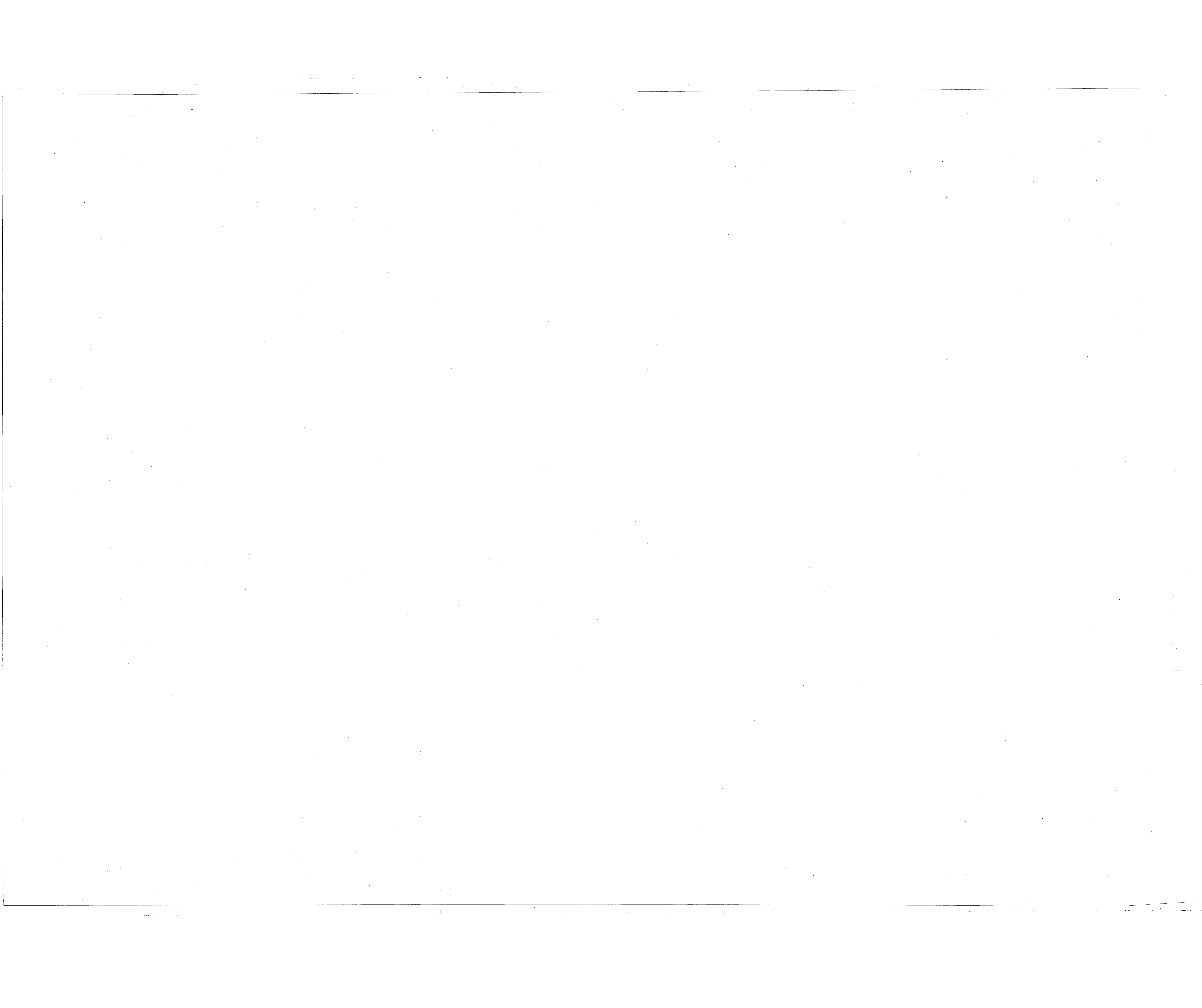


RECORD DRAWING LETTER DATED OCT 14 1988 M-4		DEPARTMENT OF THE NAVY NAVAL FACILITIES ENGINEERING COMMAND ATLANTIC DIVISION	
MBTB ARCHITECTS ENGINEERS P.O. BOX 1588 GREENVILLE, S.C. 29217-1588		NAVAL STATION CAMP LEJEUNE, N.C.	
DES. MOODS DR. CASASO PROJ. MGR. PACO SUBMITTED BY: [Signature] FIRM MEMBER: [Signature] EFD. FR. [Signature]		UNACCOMPANIED ENLISTED PERSONNEL HOUSEKEEPING TYPICAL HVAC PLANS UNIT H & DETAILS	
APPROVED: [Signature] OFFICER IN CHARGE		DATE: [Date] SIZE: [Size]	





RECORD DRAWING LETTER DATED OCT 14 1988		M-5	
MBTB ARCHITECTS ENGINEERS P.O. BOX 1208 GREENVILLE, SC 29630		DEPARTMENT OF THE NAVY NAVAL FACILITIES ENGINEERING COMMAND ATLANTIC DIVISION	
DES. WOODS, DR. CASAD, CHK. WOODS		NAVAL STATION NORFOLK, VIRGINIA	
PROJ. MGR. PAGE CH. ENGR. BUNDS		MCB CAMP LEJEUNE, N. C.	
SUBMITTED BY DATE		UNACCOMPANIED ENLISTED PERSONNEL HOUSING	
FIRM MEMBER PRINCIPAL		HVAC DETAILS H0476	
EFD. P.P. DIV.		H0445-425	
APPROVED: DATE		SIZE CODE IDENT. NO. NAVFAC DRAWING NO.	
OFFICER IN CHARGE DATE		F 80091 419285	
APPROVED: DATE		CONSTR. CONTR. NO. 162470-BI-B-1589	
FOR EFD FOR COMMANDER, NAVFAC		SCALE: AS SHOWN SPEC. 05-BI-1689	



AIR HANDLING UNIT SCHEDULE

MARK	FAN CAPACITY					COOLING CAPACITY						HEATING CAPACITY				REMARKS	NEMA STARTER SIZES				
	SUPPLY AIR CFM (MAX)	SUPPLY AIR CFM (MIN)	OUTSIDE AIR CFM	EXTERNAL STATIC PRESS. (IN H ₂ O)	FAN H.P. (MIN)	ENT. AIR TEMP.		LVG. AIR TEMP.		MAX. F.V. FT. / MIN.	WATER FLOW GPM	WATER PRESS. DROP FT.	ENT. WATER TEMP. °F	TOTAL HEATING CAPACITY BTUH	ENT. AIR TEMP. °F			LVG. AIR TEMP. °F	WATER FLOW GPM		
						DRY BULB °F	WET BULB °F	DRY BULB °F	WET BULB °F												
AHU-1	4800	—	200	1.85	3	109.7	93.8	79.5	66.1	60.5	58.9	501	21.6	0.4	44	148.1	65.1	95.0	21.6	BLDG. 485, 3RD FL. UNITS	0
AHU-2	3524	—	200	1.85	3	94.1	71.4	79.7	66.3	61.0	58.6	467	18.8	0.6	44	116.1	64.5	95.0	18.8	BLDG. 485, 1ST & 2ND FL. UNITS	0
AHU-3	5626	—	240	1.85	5	129.7	110.5	80.0	66.5	60.5	58.5	475	25.0	0.6	44	180.0	65.4	95.0	25.6	BLDG. 455 & 465-3RD FL. UNITS	1
AHU-4	4200	—	240	1.85	5	101.7	82.5	80.4	66.8	60.0	58.6	551	20.1	0.3	44	140.2	64.1	95.0	20.1	BLDG. 455 & 465-1ST & 2ND FL. UNITS	1
AHU-5	2420	—	200	1.85	1 1/2	63.3	49.9	79.9	66.8	60.5	58.2	432	7.3	0.5	44	83.3	63.3	95.0	7.1	BLDG. 445, 475 & 495-3RD FL. UNITS	00
AHU-6	1790	—	200	1.85	1	51.2	37.8	80.2	59.5	59.5	57.4	595	7.1	0.5	44	70.3	62.0	99.0	7.3	BLDG. 445, 475 & 495-1ST & 2ND FL. UNITS	0

- NOTES:
- HEATING ENT. WATER TEMP. AHU-1 & AHU-2 = 120°F; 14.3°F ΔT; AHU-5 & AHU-6 = 120°F @ 14.0°F ΔT
 - HEATING ENT. WATER TEMP. AHU-3 & AHU-4 = 120°F; 15.0°F ΔT
 - COOLING COILS FOR ALL UNITS SHALL BE SIZED USING A 10° WATER ΔT
 - ELECTRICAL CHARACTERISTICS FOR ALL AHU'S = 208V/3Ø/60~, EXCEPT AHU-6 WHICH SHALL BE 208V/1Ø/60~.

REVISED AS: JLT 10/1/88 MUY

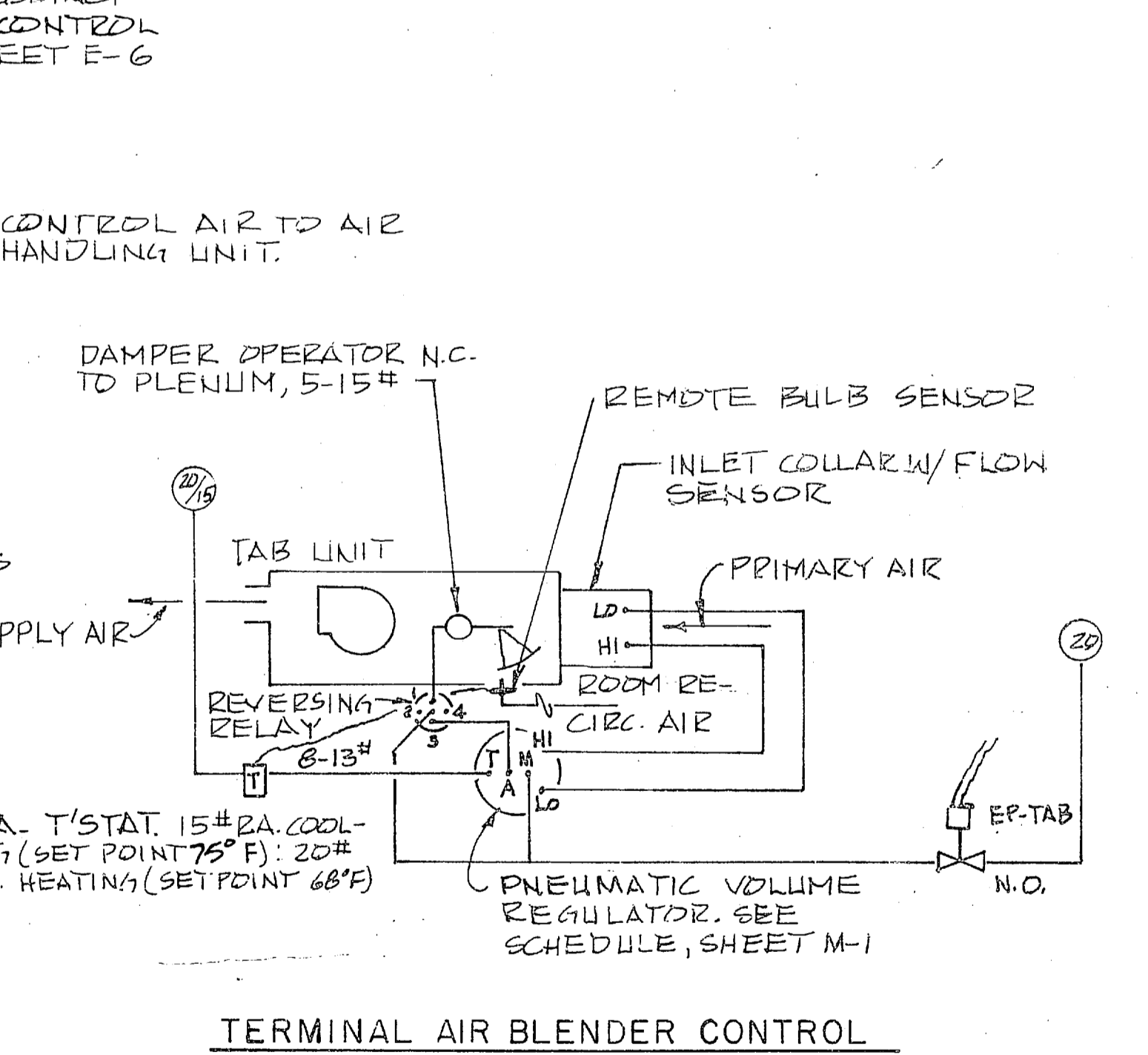
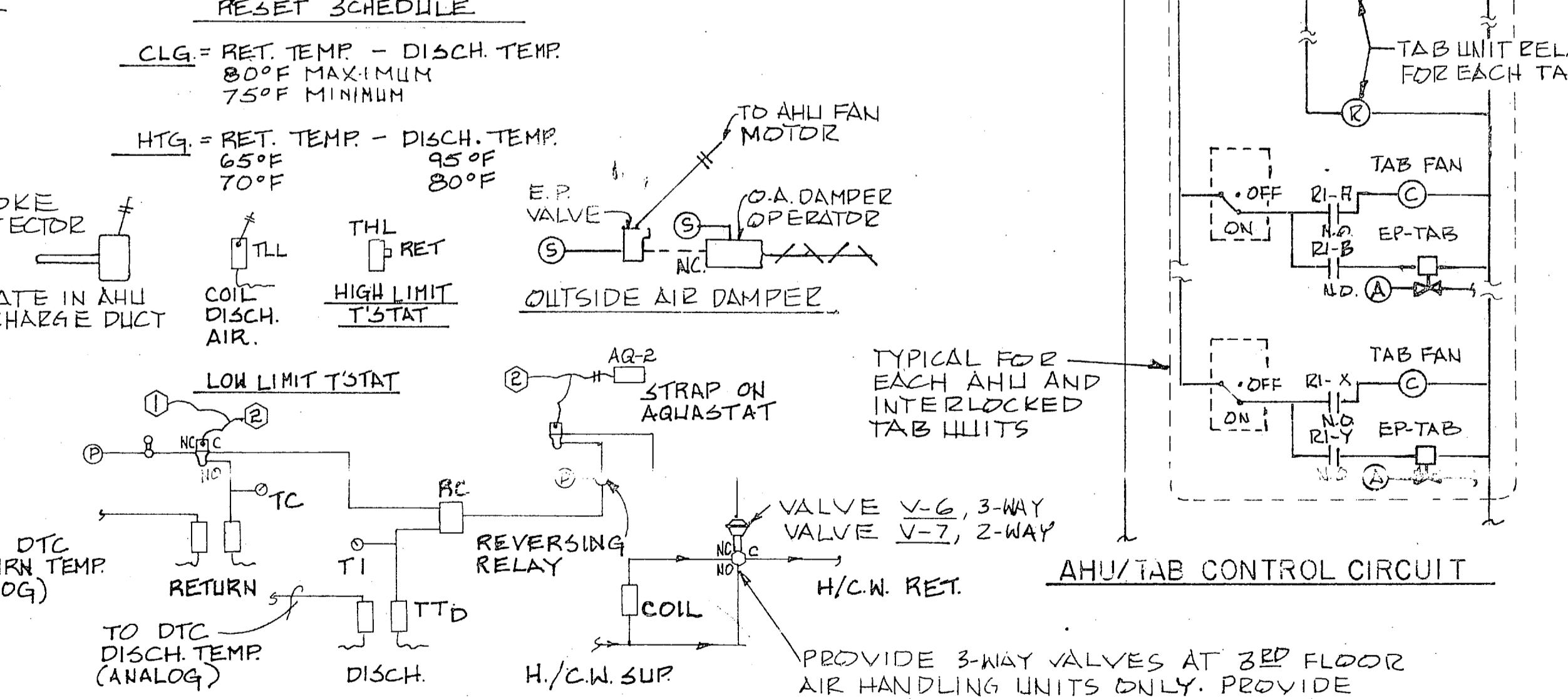
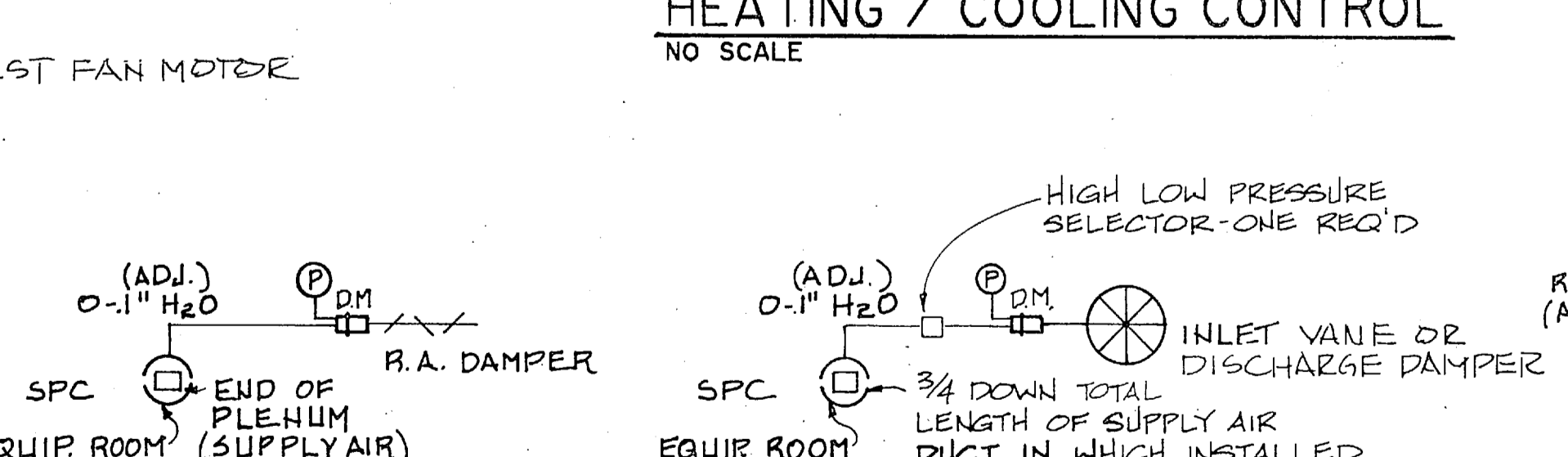
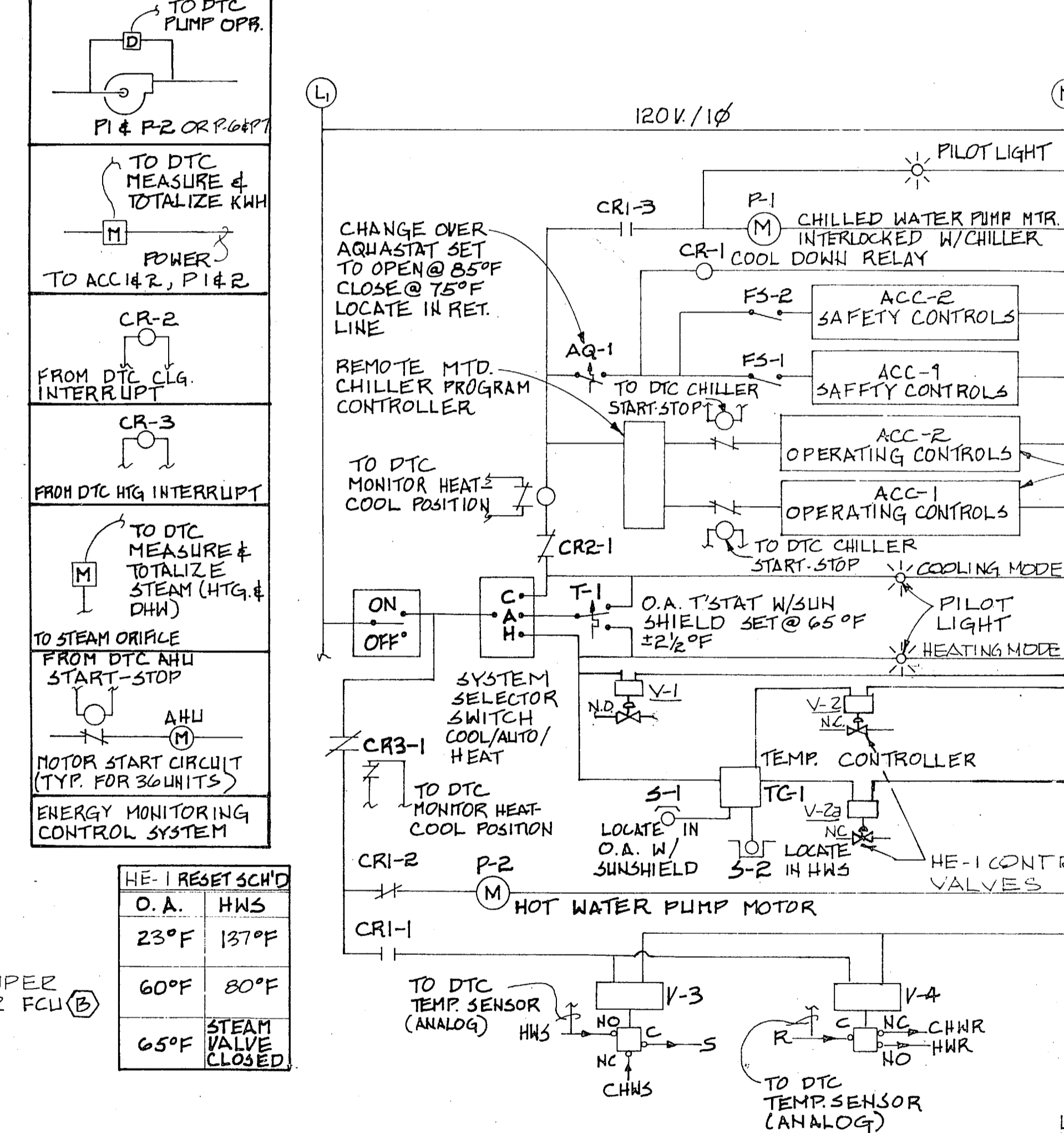
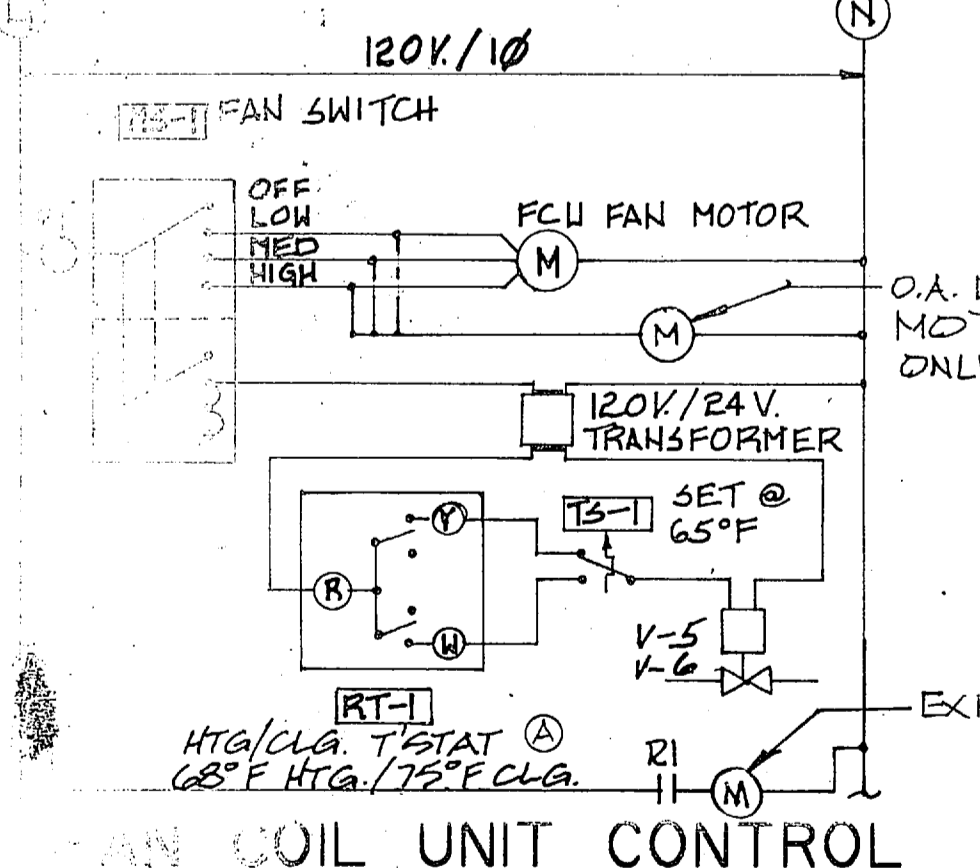
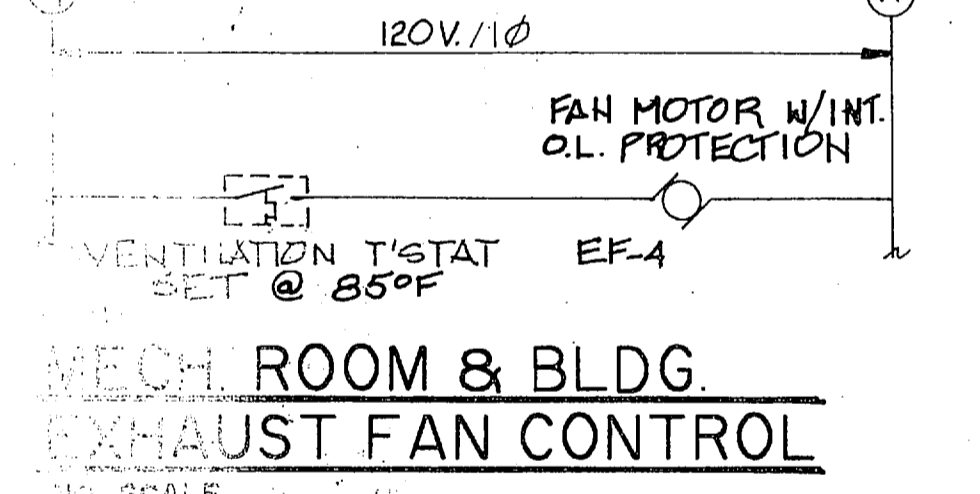
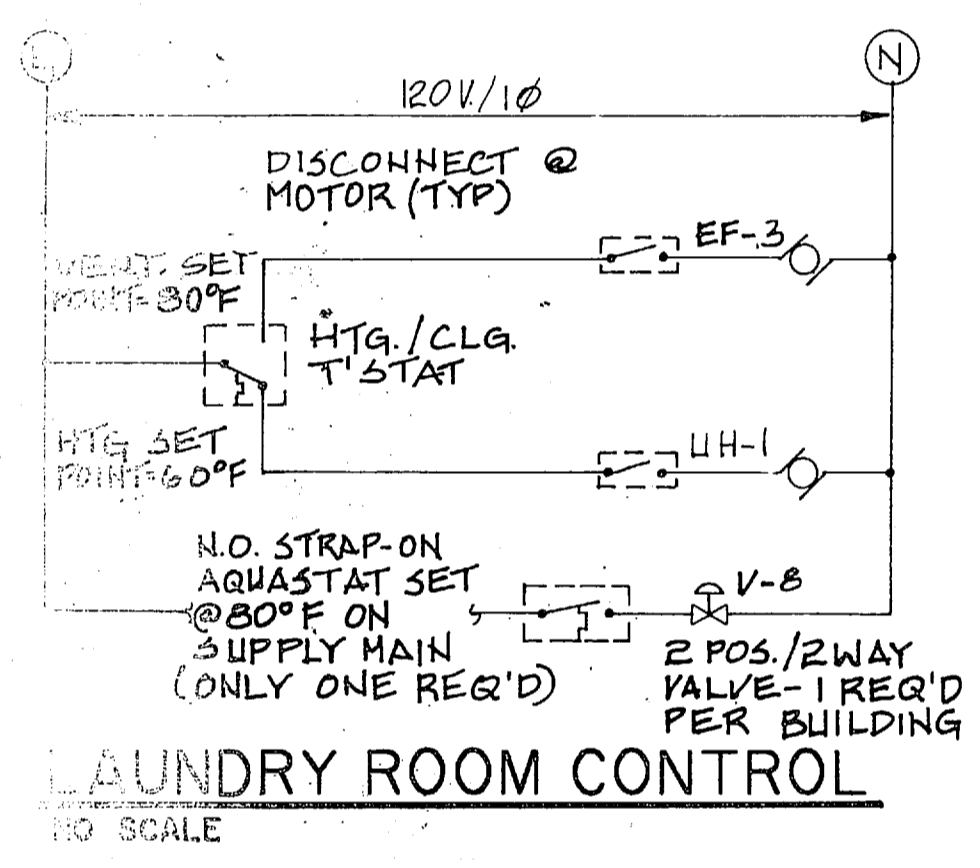
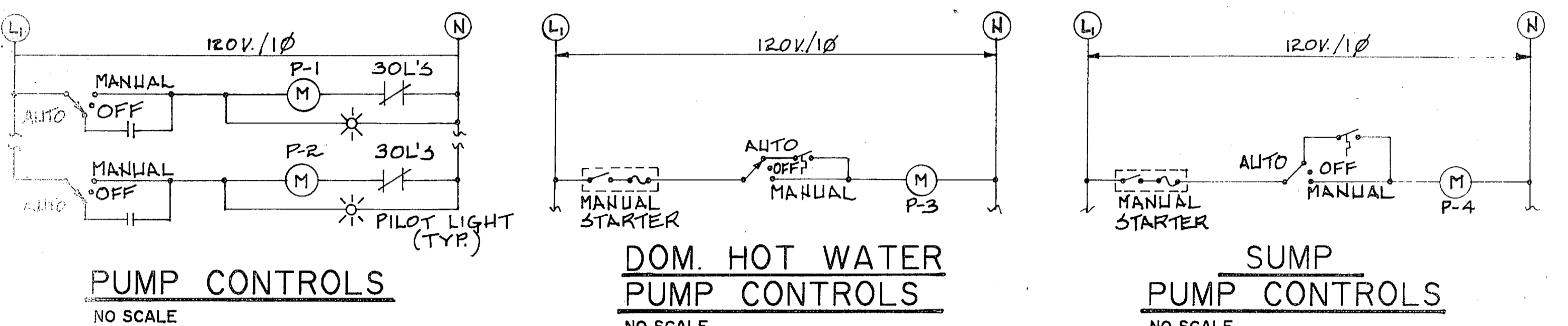
CONTROL LEGEND

V-1	VALVE
TC	TEMPERATURE CONTROLLER
AQ	AQUASTAT
FS	FLOW SWITCH
CR	RELAY
MS	FAN SWITCH
TS	CHANGE OVER THERM STAT
RT	ROOM THERMOSTAT
Ⓜ	MOTOR
Ⓛ	LINE VOLTAGE
Ⓝ	NEUTRAL
⊛	PILOT LIGHT
DH	DAMPER MOTOR
⊕	MOTORIZED CONTROL VALVE, 2-WAY
⊕	MOTORIZED CONTROL VALVE, 3-WAY
⊖	RELAY
SPC	STATIC PRESSURE CONTROLLER
CHWS	CHILLED/HOT WATER SUPPLY
CHWR	CHILLED/HOT WATER RETURN
RA	RETURN AIR
ⓐ	MAIN AIR

VALVE SCHEDULE

MARK	UNIT SERVED	SERVICE	TYPE	ACTION	CAPACITY		STEAM PRESS. (PSIG)		MIN. CV	MAX. V.P.D. (INCHES)	NOM. SIZE (INCHES)	LOCATION	REMARKS
					LBS/HR	GPM	INITIAL	FINAL					
PRV-1	—	STM.	2-WAY	MOD.	5626	—	125	25	30	—	2"	MECH.	
PRV-2	—	STM.	2-WAY	MOD.	5635	—	125	25	30	—	2"	MECH.	
V-1	HE-1	STM.	2-WAY	2 POS.	5635	—	25	15	83	—	3"	MECH.	
V-2	HE-1	STM.	2-WAY	MOD.	1860	—	25	15	21	—	2"	MECH.	1/3 CAP.
V-2a	HE-1	STM.	2-WAY	MOD.	3775	—	25	15	54	—	3"	MECH.	2/3 CAP.
V-2b	HE-2	STM.	2-WAY	MOD.	2418	—	25	15	35	—	2 1/2"	MECH.	
V-2c	HE-2	STM.	2-WAY	MOD.	2418	—	25	15	35	—	2 1/2"	MECH.	
V-3	CHANGE OVER	PCHV	3-WAY	MOD.	—	384	—	—	237	—	5"	MECH.	DIVERTING
V-4	CHANGE OVER	PCHV	3-WAY	MOD.	—	384	—	—	237	—	5"	MECH.	DIVERTING
V-5	FCU (B)	CHV	2-WAY	2 POS.	—	3.0	—	—	1.8	—	1/2"	—	
V-6	FCU (C)	CHV	2-WAY	2 POS.	—	0.4	—	—	0.4	—	1/2"	—	
V-7	PHE-1	COND.	3-WAY	2 POS.	—	11	—	—	6.5	—	1"	MECH.	
V-8	UH-1	HVR	2-WAY	2 POS.	—	0.61	—	—	0.4	—	1/2"	—	
V-9	UH-2	HVR	2-WAY	2 POS.	—	10.0	—	—	6.9	—	1"	MECH.	
V-10	CHANGE OVER	PCHV	3-WAY	MOD.	—	87	—	—	51	—	2 1/2"	*	MIXING
V-11	CHANGE OVER	PCHV	3-WAY	MOD.	—	101	—	—	68	—	3"	**	MIXING
V-12	AHU-1	CHW	3-WAY	MOD.	—	21.6	—	—	13	—	1 1/2"	#	
V-13	AHU-2	CHW	2-WAY	MOD.	—	18.8	—	—	12	—	1 1/4"	#	
V-14	AHU-3	CHW	3-WAY	MOD.	—	25.6	—	—	17	—	1 1/2"	**	
V-15	AHU-4	CHW	2-WAY	MOD.	—	20.1	—	—	13	—	1 1/2"	**	
V-16	AHU-5	CHW	3-WAY	MOD.	—	7.3	—	—	4.3	—	1"	**#	
V-17	AHU-6	CHW	2-WAY	MOD.	—	7.1	—	—	4.3	—	1"	**#	
V-18	CHANGE OVER	PCHV	3-WAY	MOD.	—	47	—	—	27	—	2"	**#	MIXING

* BLDG 485
** BLDG 455 & 465
*** BLDG 445, 475 & 495



AIR HANDLING UNIT CONTROL
NO SCALE

NOTE: AHU FANS SHALL BE PROVIDED WITH PUSH BUTTON START/STOP STATIONS LOCATED IN THEIR RESPECTIVE EQUIPMENT ROOMS. VALVE EP-7 SHALL CUTOFF CONTROL AIR TO THE AHU WHEN THE FAN IS OFF.

RECORD DRAWING
LETTER DATED OCT 3, 1988

M-6

<p>MBTB ARCHITECTS ENGINEERS P.O. BOX 1508 GREENVILLE, S.C. 29230-0158</p> <p>DES: M2003/DW: CASAD DWK: M2003 PROJ: MGR: PACE CH: ENR: BRUNES SUBMITTED BY: DATE: 10/20/88 FIRM MEMBER: RVD: KTD NO. APPROVED: DIR: DATE: 7/27/89</p>	<p>DEPARTMENT OF THE NAVY ATLANTIC DIVISION NAVAL STATION NORFOLK, VIRGINIA CAMP LEJEUNE, N. C.</p> <p>MCR UNACCOMPANIED ENLISTED PERSONNEL HOUSING HVAC CONTROLS & SCHEDULES</p> <p>NO. 419287 OFFICER IN CHARGE: DATE: 7/27/89</p>
--	--

HP 476 445-475