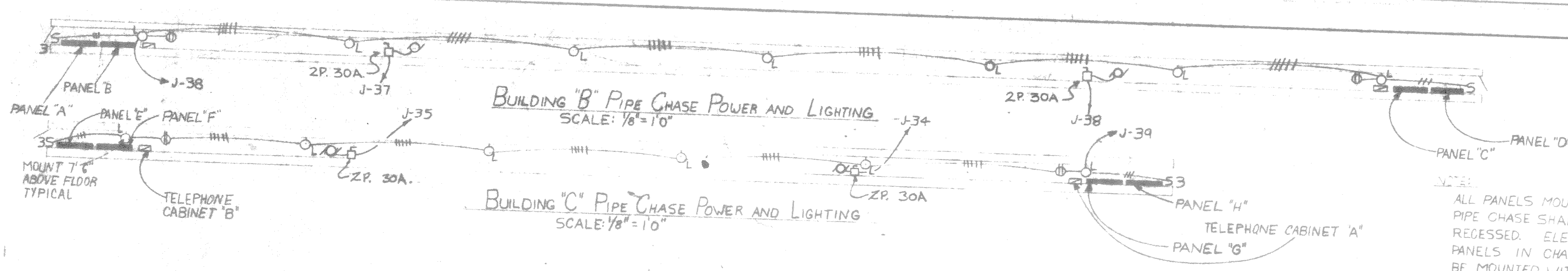
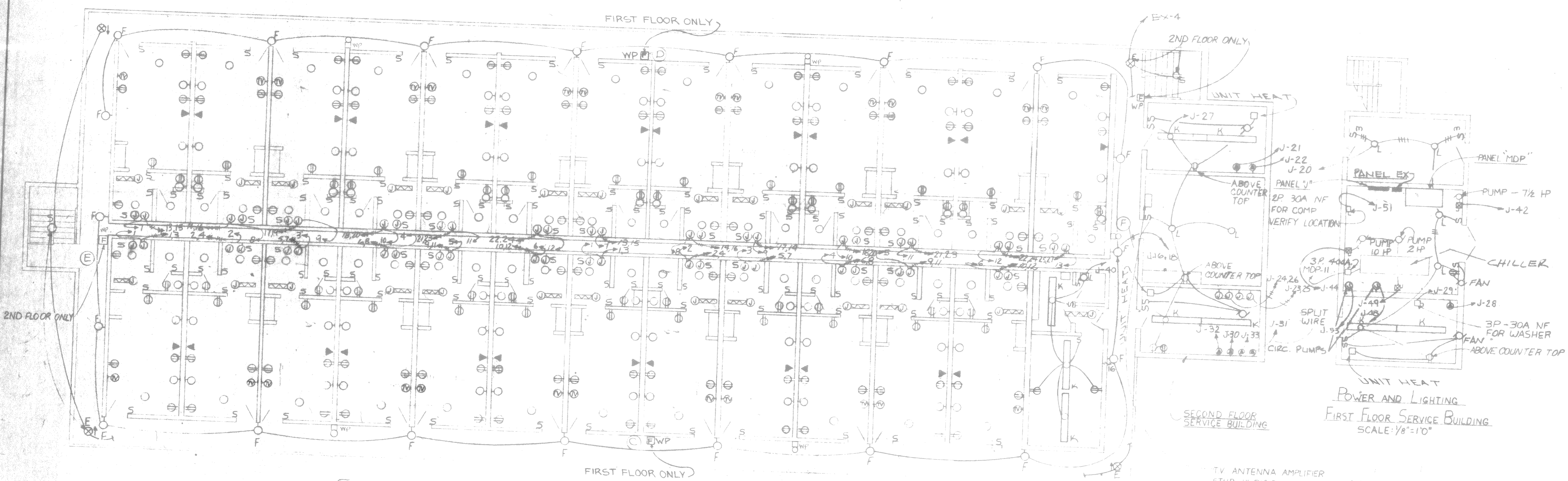


NO.	REVISIONS
1	AS-BUILT



ALL PANELS MOUNTED IN PIPE CHASE SHALL BE RECESSED. ELECTRICAL PANELS IN CHASE SHALL BE MOUNTED WITHOUT DOORS.



TV ANTENNA AMPLIFIER
STUB 1" RIGID STEEL
CONDUIT THRU ROOF
ABOVE AMPLIFIER FOR
ANTENNA MAST
VERIFY LOCATION
PROVIDE 120V POWER

NOTES

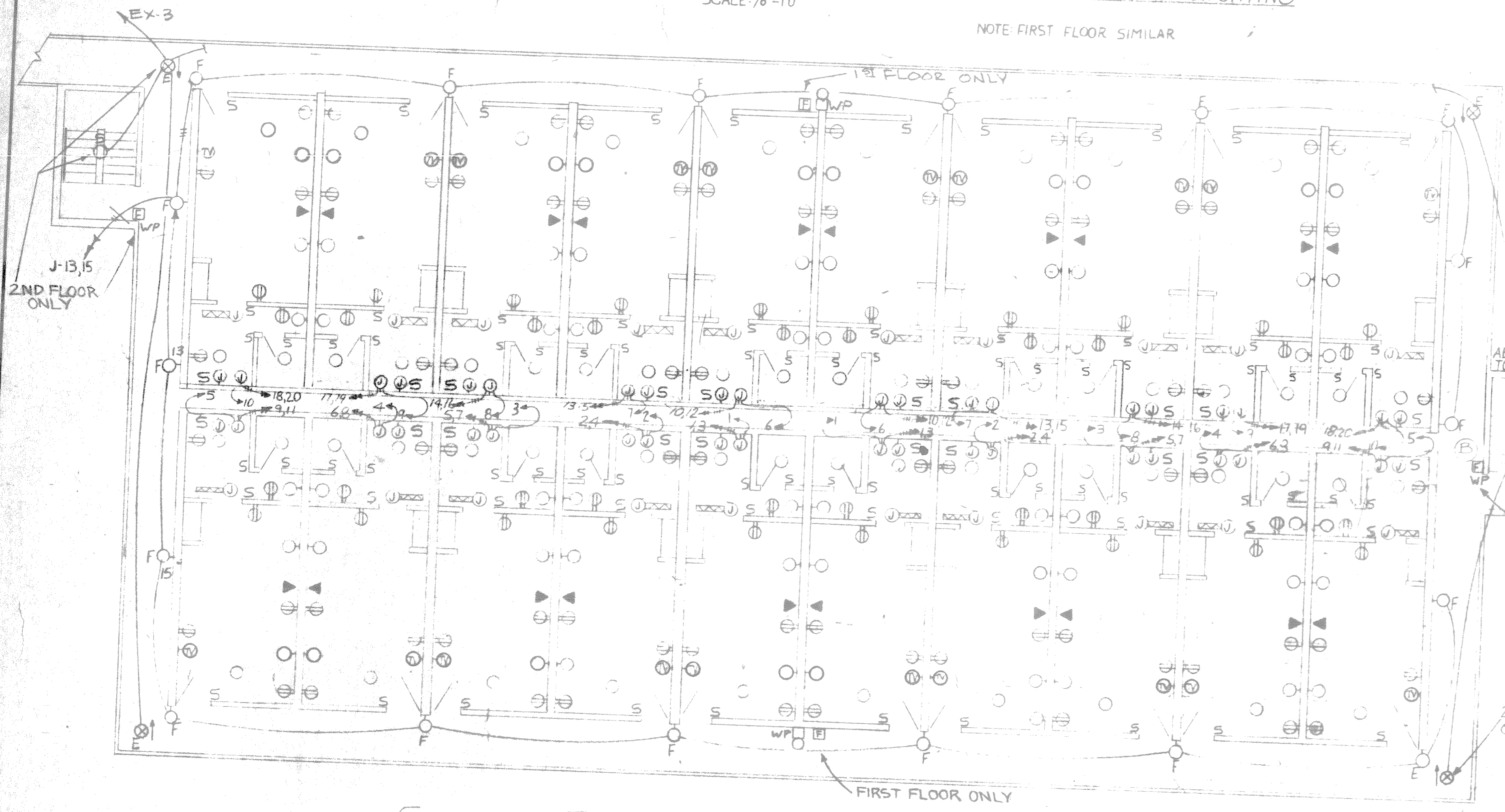
RUN 3/4" CONDUIT FROM EACH TV ANTENNA
OUTLET TO PIPE CHASE IN BUILDINGS "B" & "C".
RUN A 1" CONDUIT

TV ANTENNA TO BE LOCATED ON ROOF OF SERVICE
BUILDING.

NOTE
ALL OUTLETS SHALL BE OFFSET MINIMUM 8" ON OPPOSITE
SIDES OF A COMMON WALL.

SECOND FLOOR BUILDING "B" POWER AND LIGHTING
SCALE: 1/8" = 10"

NOTE FIRST FLOOR SIMILAR



AS BUILT

DATE: 1/11/1973

INSPECTOR: [Signature]

CONTRACTOR: [Signature]

898
897

RECORD DRAWING
LETTER DATED 1 OCT 1973

ATLANTIC ENGINEERS & ARCHITECTS, INC.
1000 N. W. 10th St., Ft. Lauderdale, Fla. 33304

LOGAN & SHARER
ARCHITECTS & ENGINEERS
1000 N. W. 10th St., Ft. Lauderdale, Fla. 33304

DEPARTMENT OF THE SEA
ATLANTIC DIVISION
MARINE CORPS BASE, FORT MONROE, VA
HOSTESS HOUSE
1150 S. 1st St., Ft. Lauderdale, Fla. 33304

BB-2

205
202