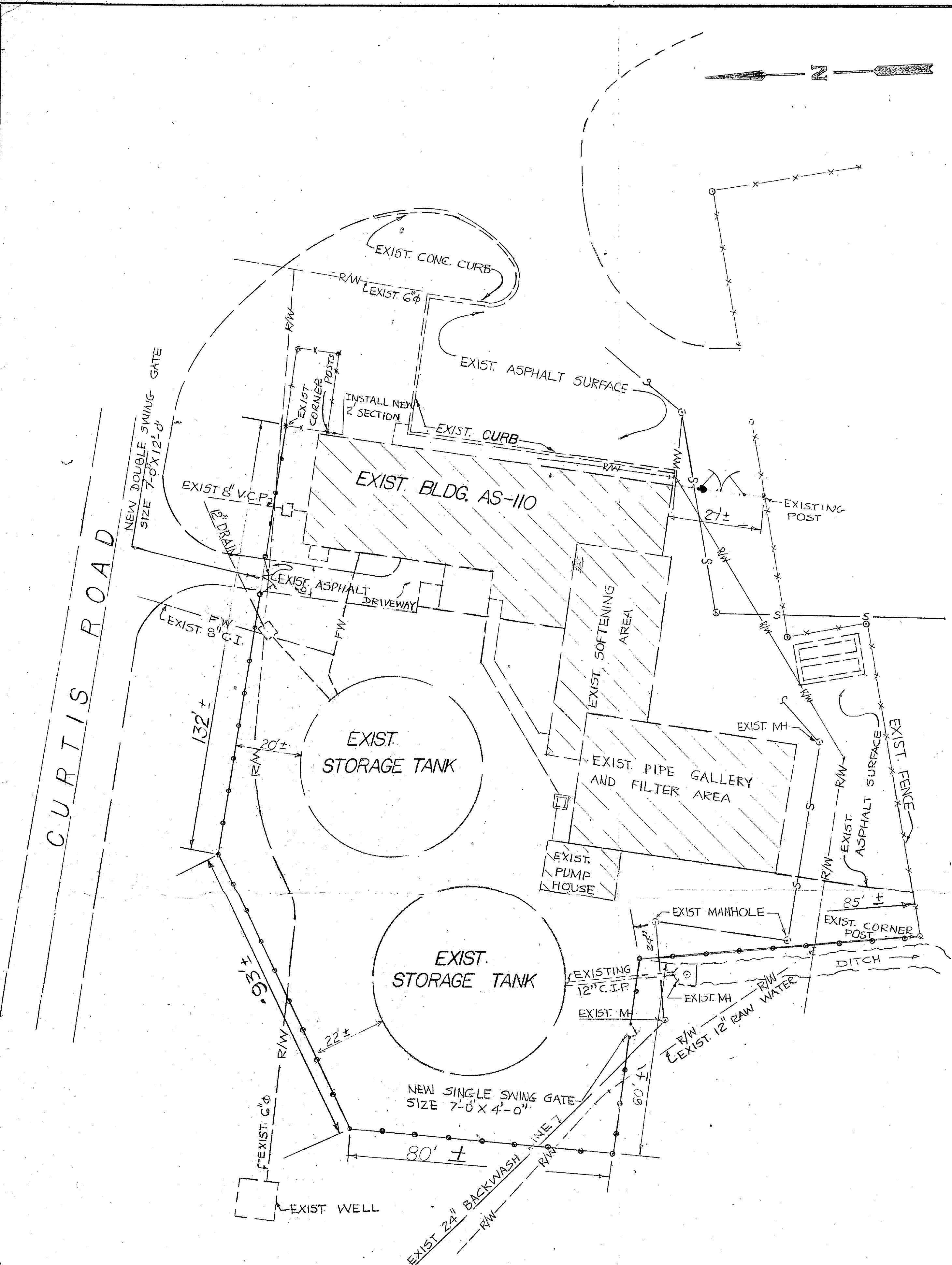
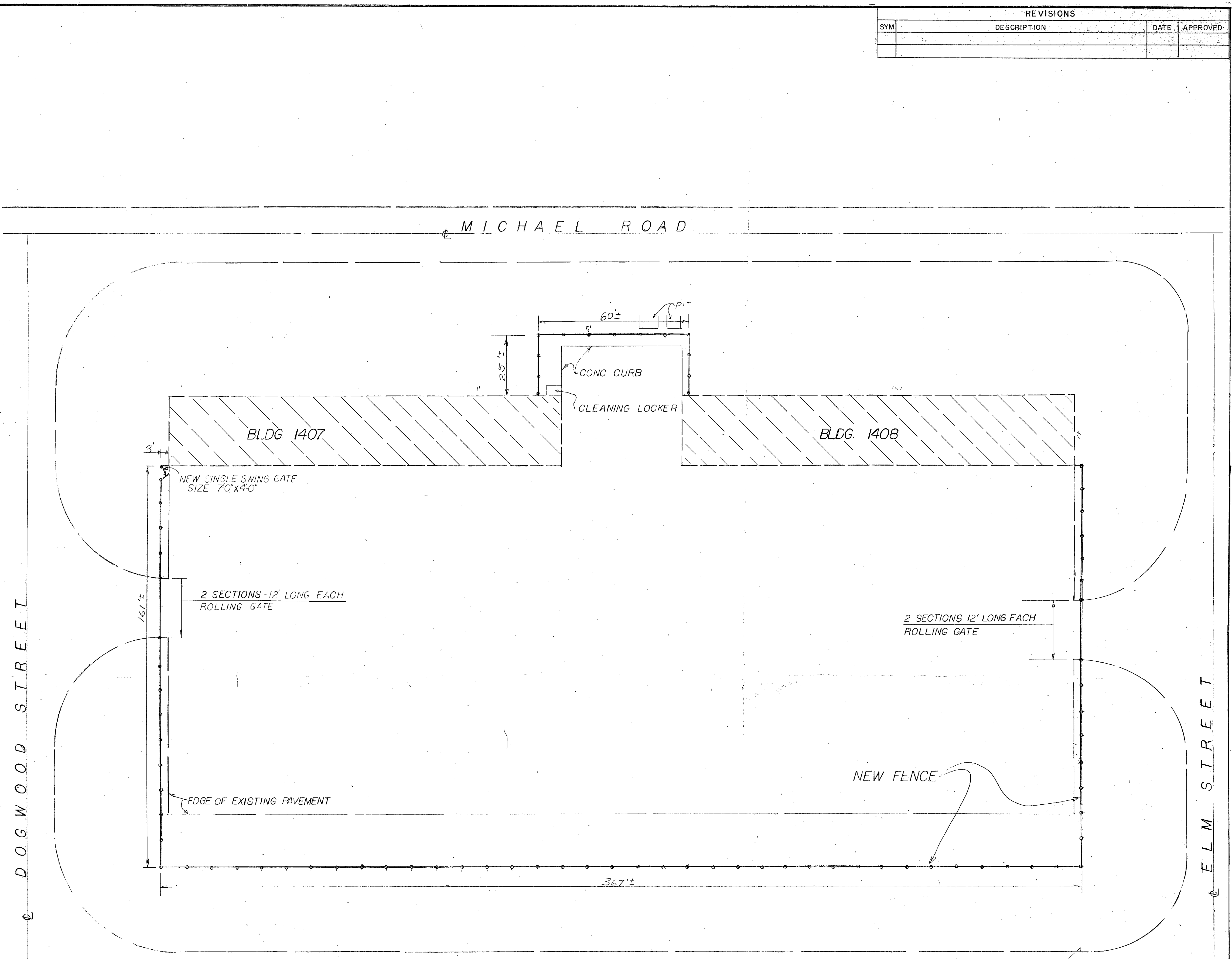


REVISIONS			
SYM	DESCRIPTION	DATE	APPROVED



SITE PLAN SITE NO.2
SCALE: 1"=20'-0"



SITE PLAN SITE NO.3
SCALE: 1"=20'-0"

PUBLIC WORKS DEPT. MARINE CORPS BASE CAMP LEJEUNE, N.C.		DEPARTMENT OF THE NAVY NAVAL FACILITIES ENGINEERING COMMAND ATLANTIC DIVISION NORFOLK, VIRGINIA	
DES. BY: <i>[Signature]</i>	CHK. BY: <i>[Signature]</i>	NAVAL STATION:	MARINE CORPS BASE, CAMP LEJEUNE, N.C.
PROJ. MGR: <i>[Signature]</i>	CH. ENG.:	SECURITY FENCES SITE PLAN BLDGs. 1407 AND AS110	
APPROVED: <i>[Signature]</i>	DATE: 2/15/80	PUBLIC WORKS OFFICER FOR THE CG	
SATISFACTORY TO:		DATE:	
COMMITTING GENERAL:		SIZE:	CODE IDENT NO.
EFD:	BVD:	F	80091
HD:	BIR:	NAVFAC DRAWING NO.	4049561
APPROVED: <i>[Signature]</i>	DATE: 2/15/80	CONSTR. CONTR. NO. N62470-80-B-2037	
FOR COMMANDER, NAVFAC		SCALE: GRAPHIC	SPEC: 05-80-2037
		SHEET 2 OF 3	
		LAND DIV. PWG NO.	

