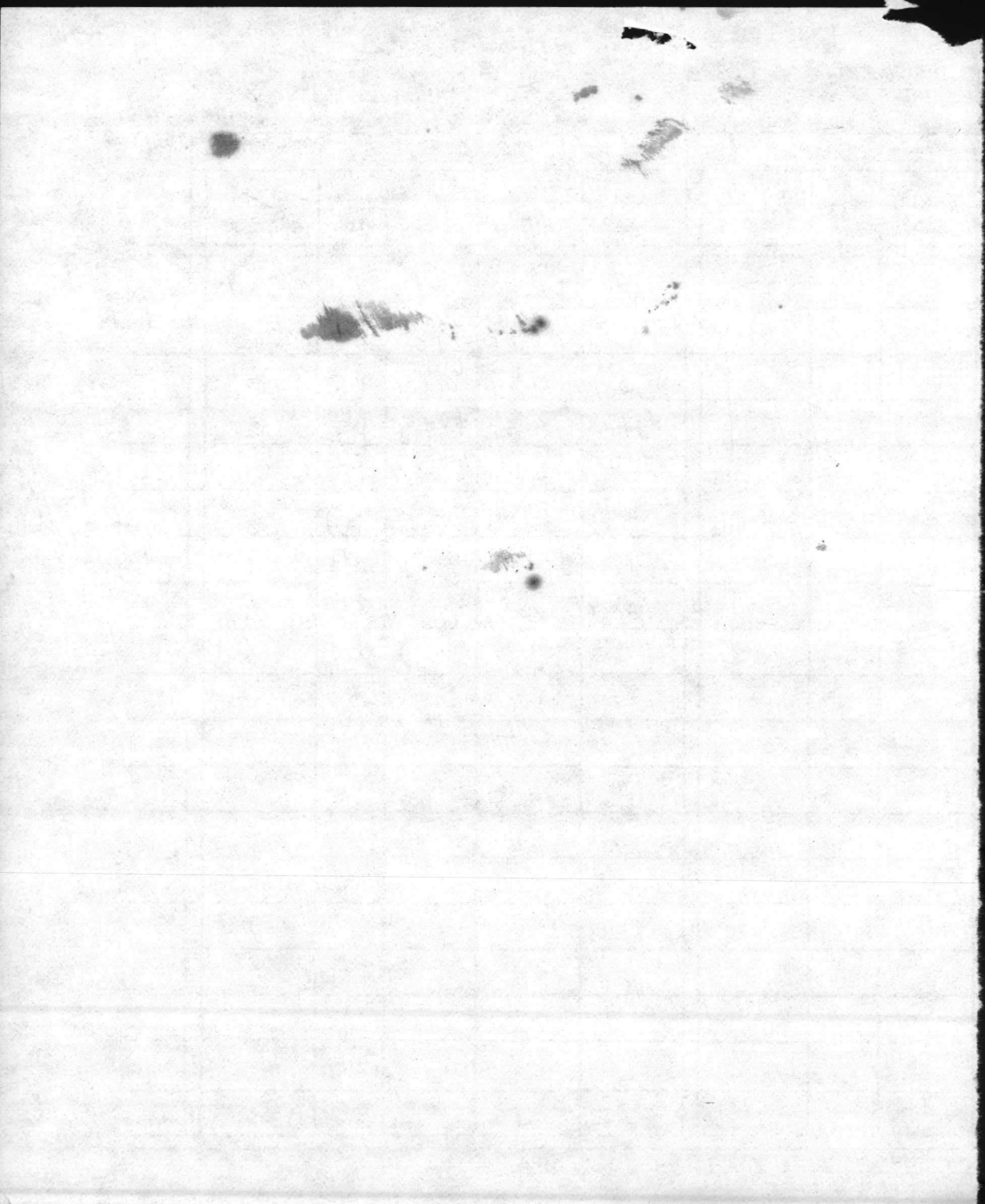


Oil & Grease

30 January 1978

SIDS (TSS)			OIL AND GREASE					
WEIGHT GAIN	TSS mg/l	ANALYST	FLASK NUMBER	FLASK & OIL	FLASK	mg/l OIL	ANALYST	pH
		RWD	1	1942	<sup>61</sup> 1912	3.0	0.7	
			2	2179	<sup>61</sup> 2153	2.6	0.3	
			3	4659	<sup>61</sup> 4647	1.2	0	
			4	8228	<sup>60</sup> 8216	1.2	0	
			5	6602	<sup>60</sup> 6583	1.7	0	
			6	4840	<sup>61</sup> 4821	1.9	0	
			7	0668	<sup>61</sup> 0661	0.0	0	
			8	7244	<sup>60</sup> 7238	0.6	0	
			9	3767	<sup>61</sup> 3756	1.1	0	
		B	<sup>80</sup> 0902	<sup>80</sup> 0779	4.3			

*W. Miller*



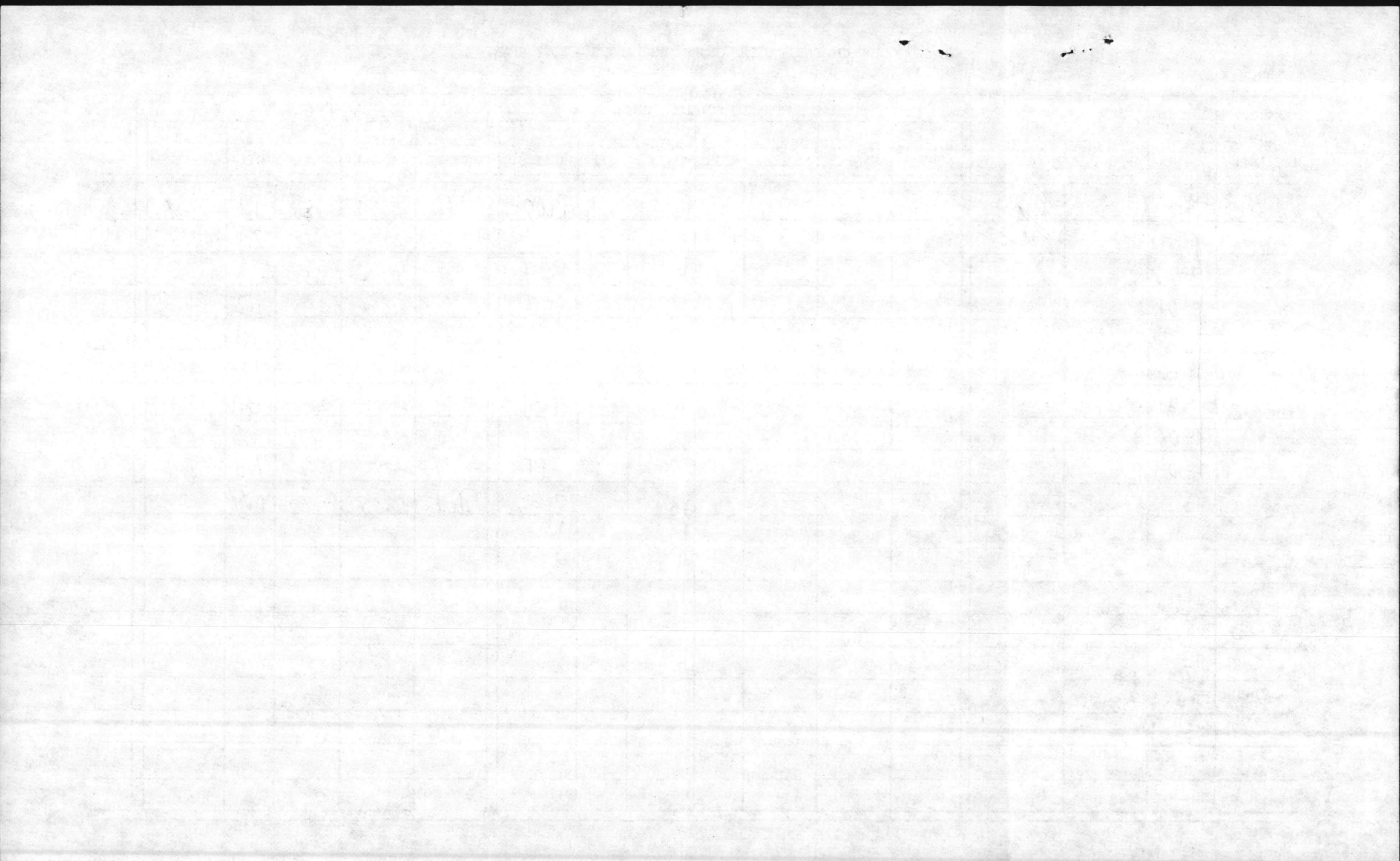














# BIOLOGICAL ANALYSIS OF RIVER WATER

MCBCL 11330/6

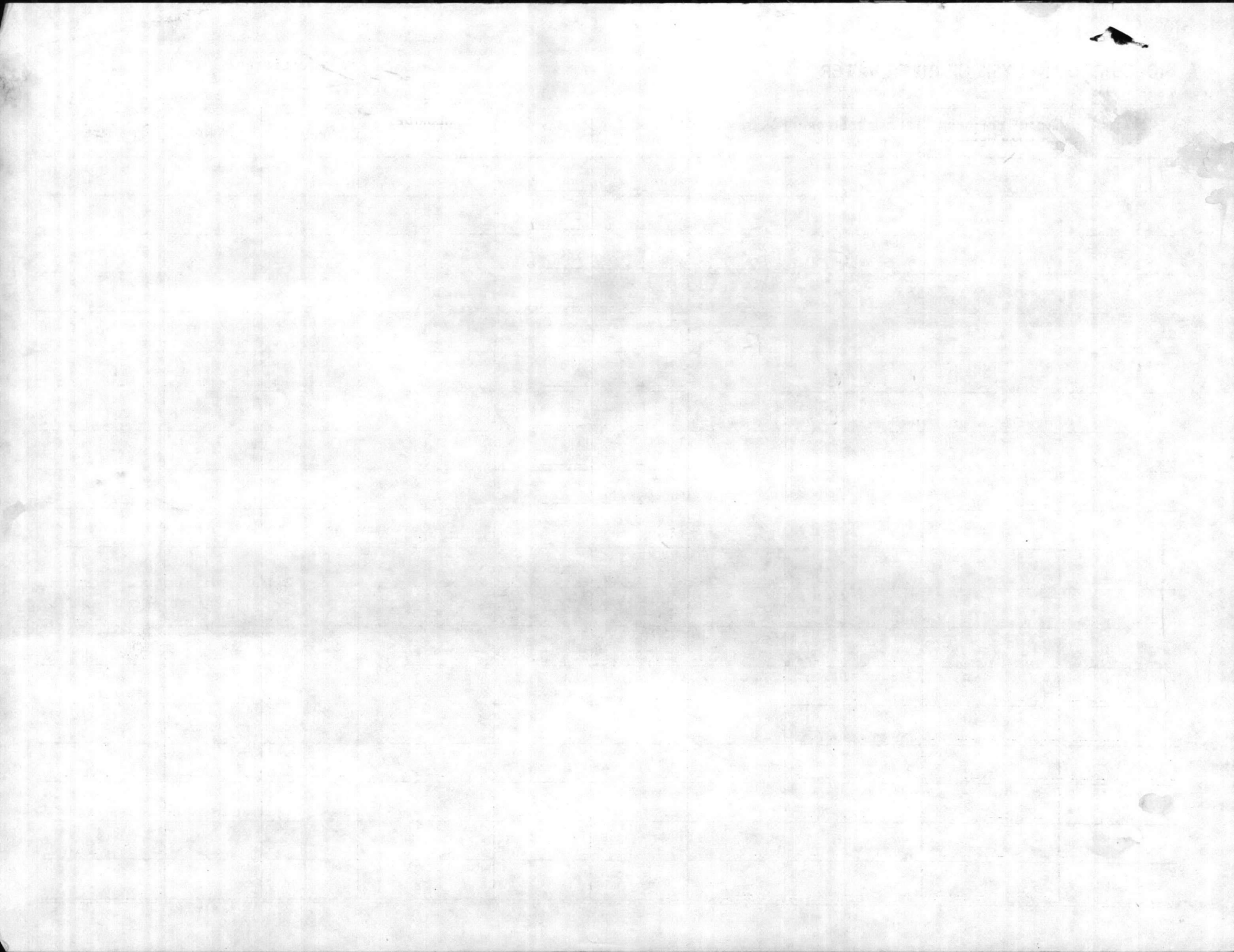
mg/liter

DATE COLLECTED

20 March 1978

STATION NO.	Time	FECAL COLIFORM		TEMP C	DO		5 DAY BOD	CHLORIDES	P. H.	WIND	Salinity
	TOTAL COLIFORM ENDO MEDIUM	m	F C MEDIUM Count		ppm	ppm					
01	1005 AM	5	40	13°	9.4	7.3	2.1	0.2	7.3		290
02	1025 AM	5	0	12.5°	10.8	3.7	7.1	0	8.0		690
03	1035 AM	5	0	12.5°	10.6	3.0	7.6	4.3	8.1		890
04	1100 AM	5	0	12	10.6	6.0	4.6	0	8.2		1170
05	1110	5	0	12	10.0	5.9	4.1	0	8.0		12.5
06	1125	100	0	12.5	9.6	6.7	2.9	0	8.0		16
07	1205	100	0	12	9.3	7.3	2.0	0.1	8.1		22
08	1225	100	0	11	9.4	7.8	1.6	0	8.1		22
09	1215	100	0	12	9.3	7.3	2.0	9.3	8.1		21
	DLC			DLC	DLC		DLC		DLC		DLC

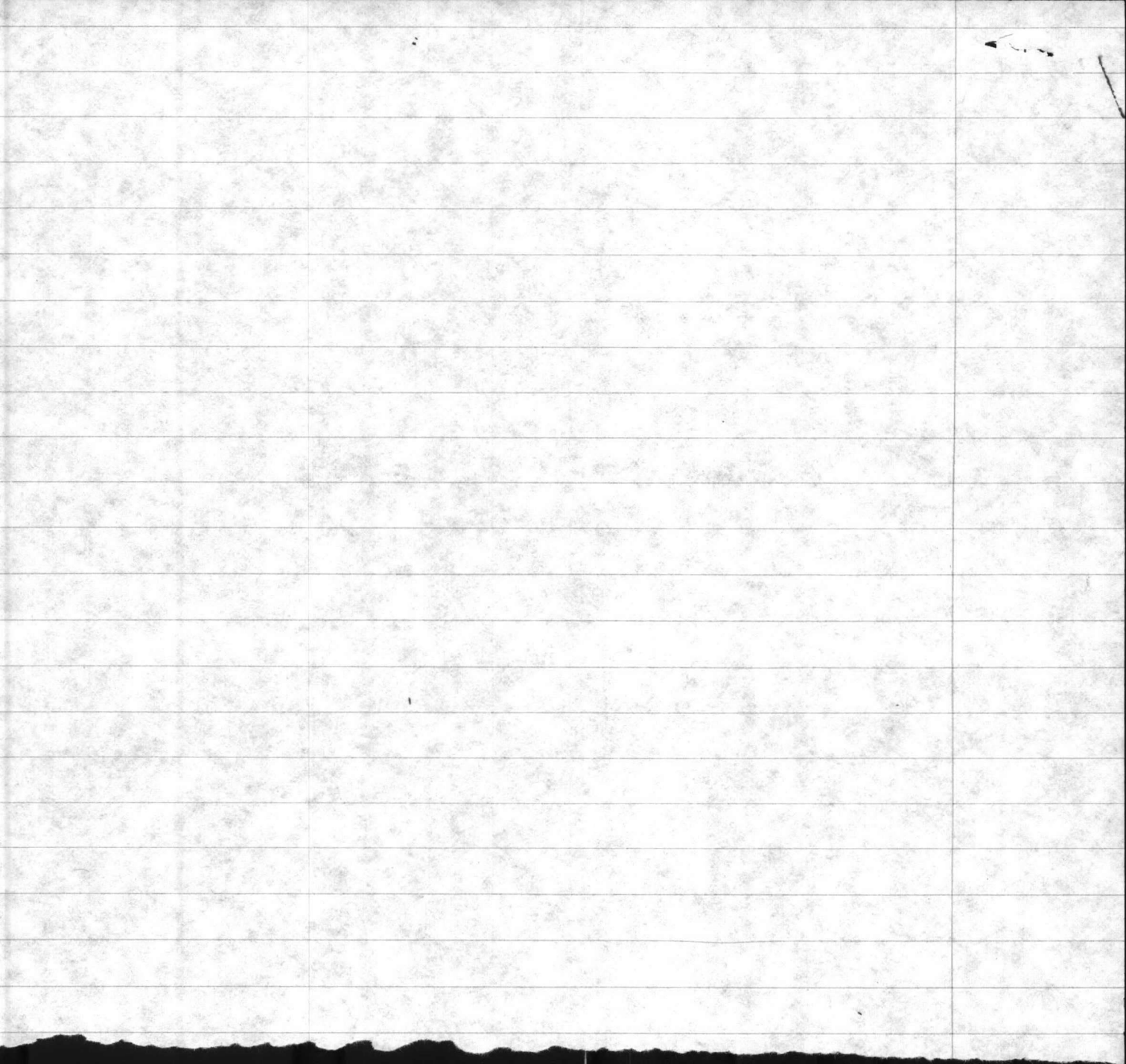
Oil & Grease



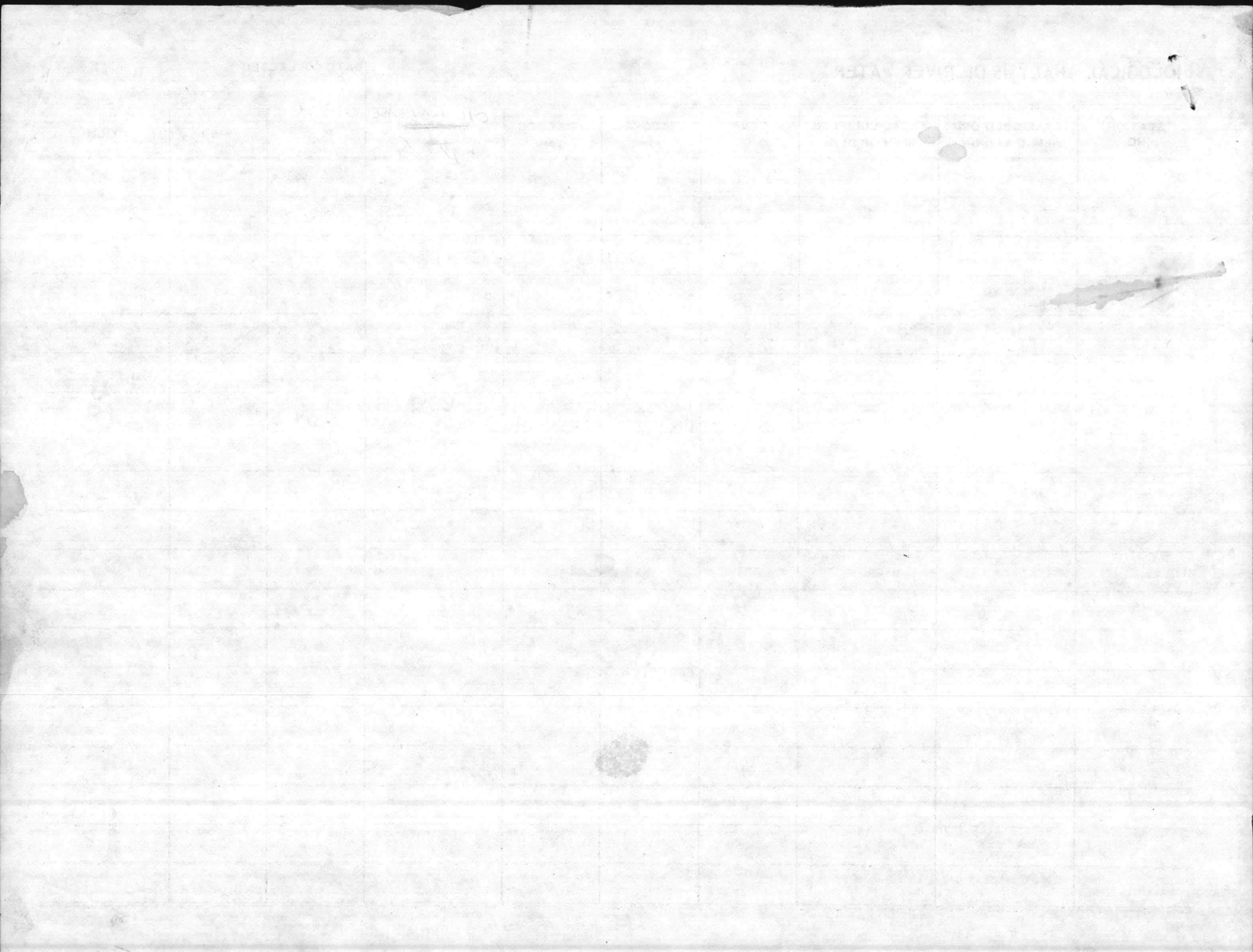
OIL + GREASE ANALYSIS of RIVER SAMPLES  
 COLLECTED 3/20/78 BY CLARK + LUKE

Sample	flask	FLASK EMPTY	FLASK +/- OIL	mg. OIL	CORRECTED FOR BLANK
1	1	61 .1880	.1935	5.5	0.2
2	2	61 .2103	.2153	5.0	0
3	3	61 .4614	.4710	9.6	4.3
4	4	60 .8191	.8233	4.2	0
5	5	60 .6548	.6590	4.2	0
6	6	61 .4792	.4840	4.8	0
7	7	61 .0607	.0661	5.4	0.1
8	8	60 .7180	.7232	5.2	0
9	9	61 .3699	.3845	146	9.3
BLANK	10	60 .7619	.7672	+ 5.3	

ANALYSIS 3/21/78  
 LUKE















DATE: \_\_\_\_\_ TIME: \_\_\_\_\_ PLACE: \_\_\_\_\_

NAME OF ANALYST: \_\_\_\_\_

NAME OF INSTITUTION: \_\_\_\_\_

NAME OF PATIENT: \_\_\_\_\_

NAME OF PHYSICIAN: \_\_\_\_\_

No.	Temp.	Specific Gravity	Acidity	Alkalinity	Hardness	Chloride	Sulfate	Phosphate	Nitrate	Ammonia	Iron	Copper	Zinc	Manganese	Lead	Mercury	Other
1																	
2																	
3																	
4																	
5																	
6																	
7																	
8																	
9																	
10																	
11																	
12																	
13																	
14																	
15																	
16																	
17																	
18																	
19																	
20																	
21																	
22																	
23																	
24																	
25																	
26																	
27																	
28																	
29																	
30																	
31																	
32																	
33																	
34																	
35																	
36																	
37																	
38																	
39																	
40																	
41																	
42																	
43																	
44																	
45																	
46																	
47																	
48																	
49																	
50																	
51																	
52																	
53																	
54																	
55																	
56																	
57																	
58																	
59																	
60																	
61																	
62																	
63																	
64																	
65																	
66																	
67																	
68																	
69																	
70																	
71																	
72																	
73																	
74																	
75																	
76																	
77																	
78																	
79																	
80																	
81																	
82																	
83																	
84																	
85																	
86																	
87																	
88																	
89																	
90																	
91																	
92																	
93																	
94																	
95																	
96																	
97																	
98																	
99																	
100																	





RIVER

BIOLOGICAL ANALYSIS OF RIVER WATER

MCBCL 11990/6

TMC

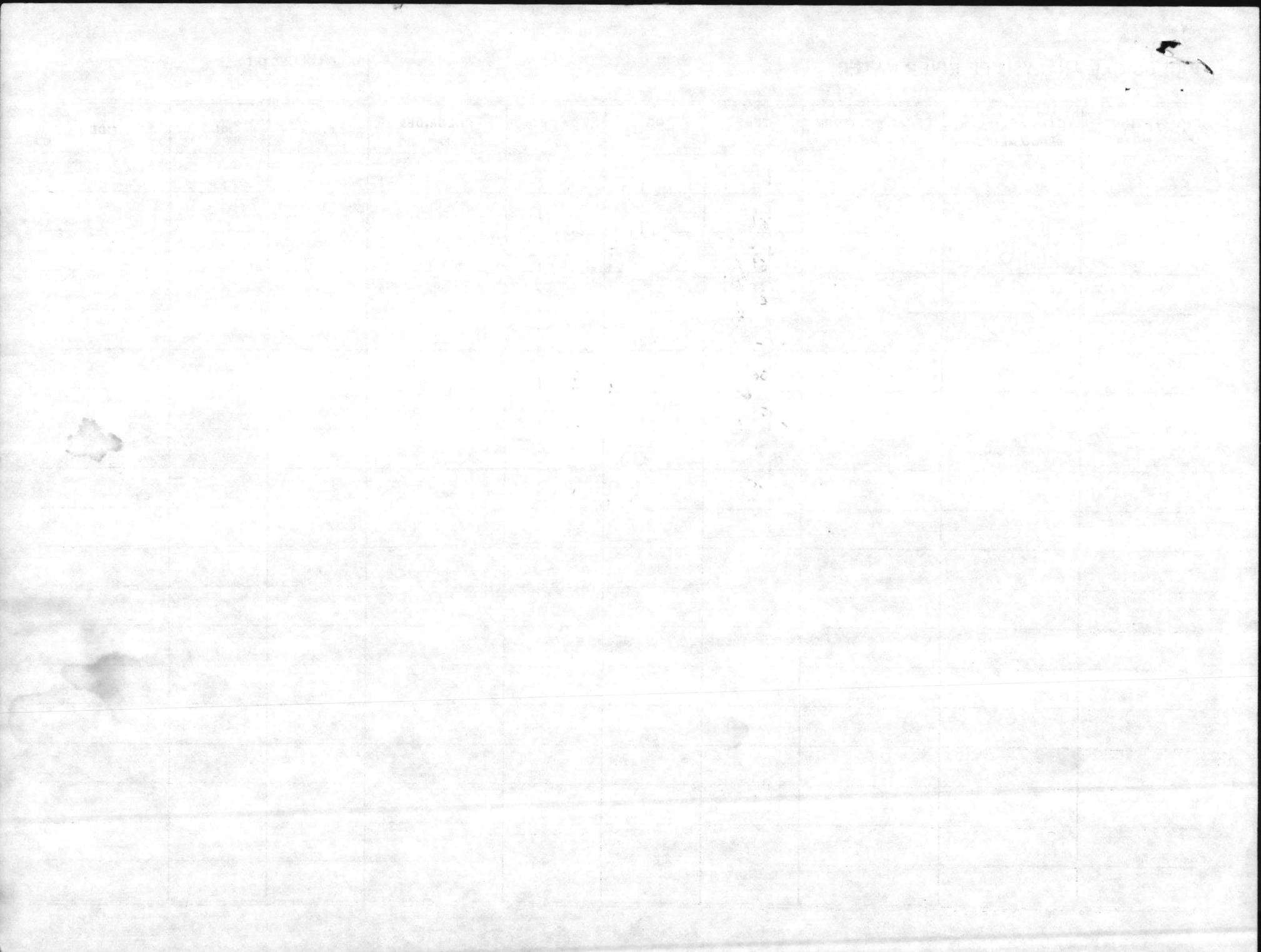
June 8th

DATE COLLECTED

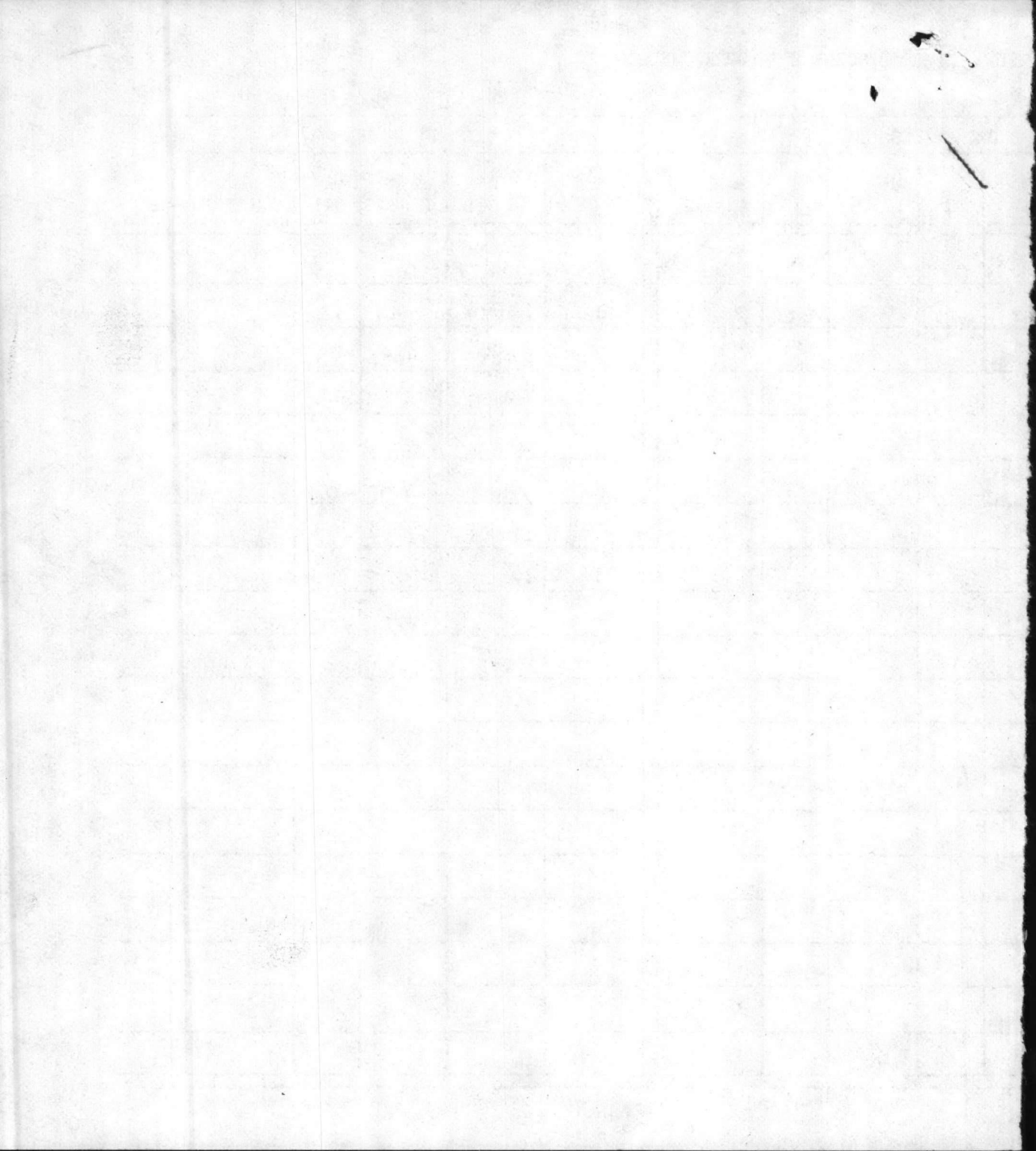
OIL + GREASE

12 May 78

STATION NO.	TOTAL COLIFORM m ENDO MEDIUM	FECAL COLIFORM m F C MEDIUM	TEMP C	DO ppm	5 DAY BOD ppm	PHOSPHORUS ppm mg/l	P. H.	WIND	SALINITY
RW-01	1050	(10) 10	28	13.2	1.1	12.1	1.0	8.6	2%
02	1105	(10) 0	28	8.5	4.1	4.4	1.2	8.3	4%
03	1110	(25) 0	28.3	8.5	5.2	3.3	0.9	8.3	4%
04	1120	(50) 0	28.3	7.9	5.0	2.9	SAMPLE DESTROYED	8.2	5%
05	1135	(50) 0	28.3	8.2	5.5	2.7	1.6	8.1	5%
06	1150	(50) 0	28.3	7.8	5.4	2.4	0.8	8.1	6%
07	1205	(50) 0	28.3	7.3	6.0	1.3	0.8	8.1	7%
08	1225	(50) 0	27	7.7	6.7	1.0	0.4	8.1	9%
09	1215	(50) 0	28	7.1	5.9	1.2	0.7	8.1	15%
				DIC			ATZ	DIC	











STATION 1012 RIVER WATER

1012

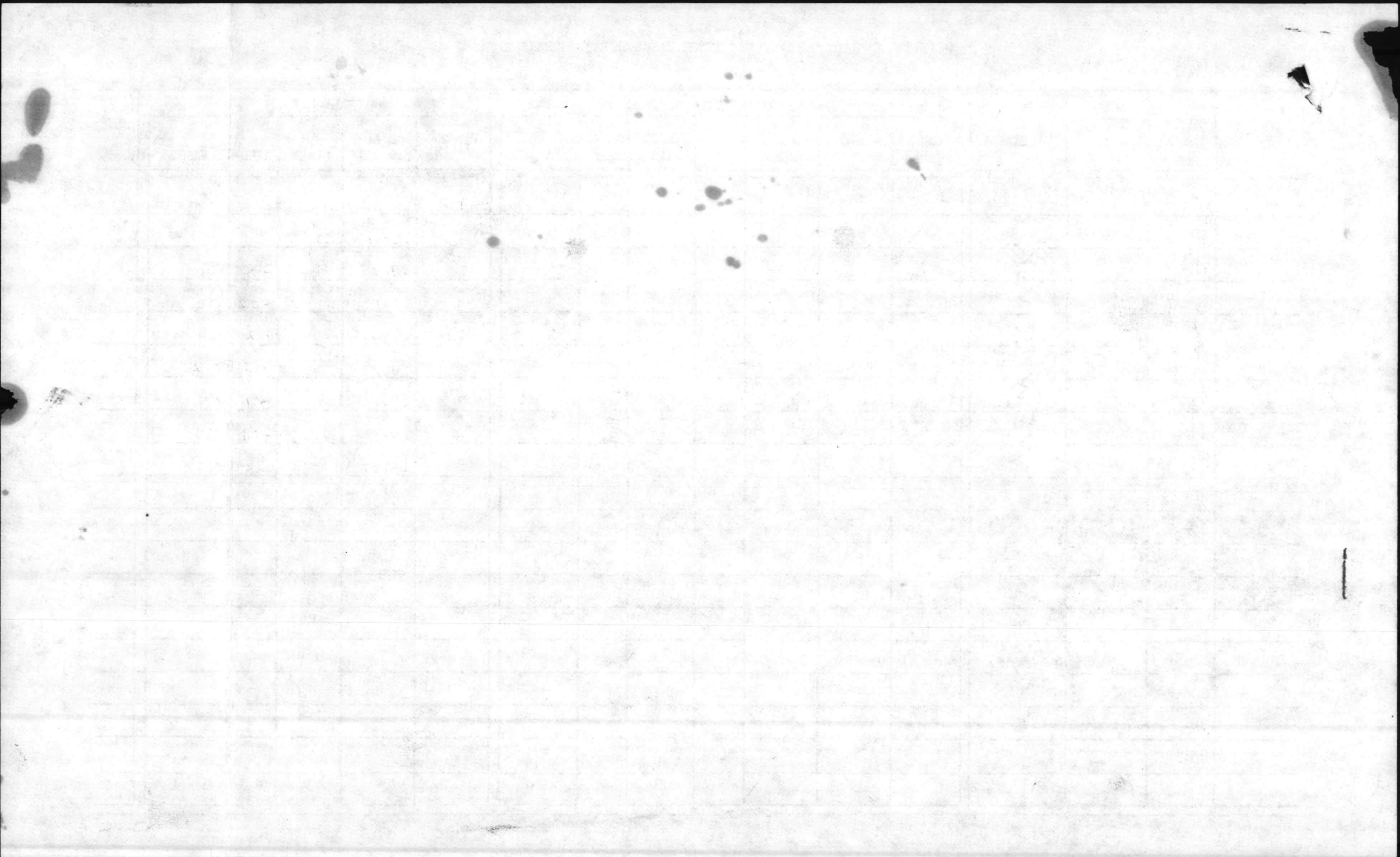
RIVER

QUALITY CONTROL LAB - ~~STORM SEWER DISCHARGES~~ - WORK SHEET

MCBCL 11345/7

DATE COLLECTED	STORM SEWER NUMBER	FLOW RATE GALLONS PER DAY	SAMPLE COLLECTOR	TOTAL SUSPENDED SOLIDS (TSS)							OIL AND GREASE					pH			
				DISH NUMBER	ml SAMPLE	DISH & SOLID	DISH	WEIGHT GAIN	TSS mg/l	ANALYST	FLASK NUMBER	FLASK & OIL	FLASK	mg/l OIL	ANALYST				
8/21/78	RW SD- 1		Eahn									1	.1921	61 .1924	-0.3	0.0			
	SD- 2		NEW RIVER									2	.2146	61 .2151	-0.5	0.0			
	SD- 3												3	.4655	61 .4659	-0.4	0.0		
	SD- 4												4	.8215	60 .8217	-0.2	0.0		
	SD- 5												5	.6588	60 .6586	0.2	0.4		
	SD- 6												6	.4833	61 .4833	0.0	0.2		
	SD- 7												7	.0661	61 .0660	0.1	0.3		
	SD- 8												8	.7233	60 .7234	-0.1	0.1		
	SD- 9												9	.3757	61 .3759	-0.2	0.0		
	SD- B												10	.7656	60 .7658	-0.2	negative blank		
	SD-																		
	SD-																		
	SD-																		
	SD-																		
	SD-																		
	SD-																		
	SD-																		
	SD-																		
	SD-																		

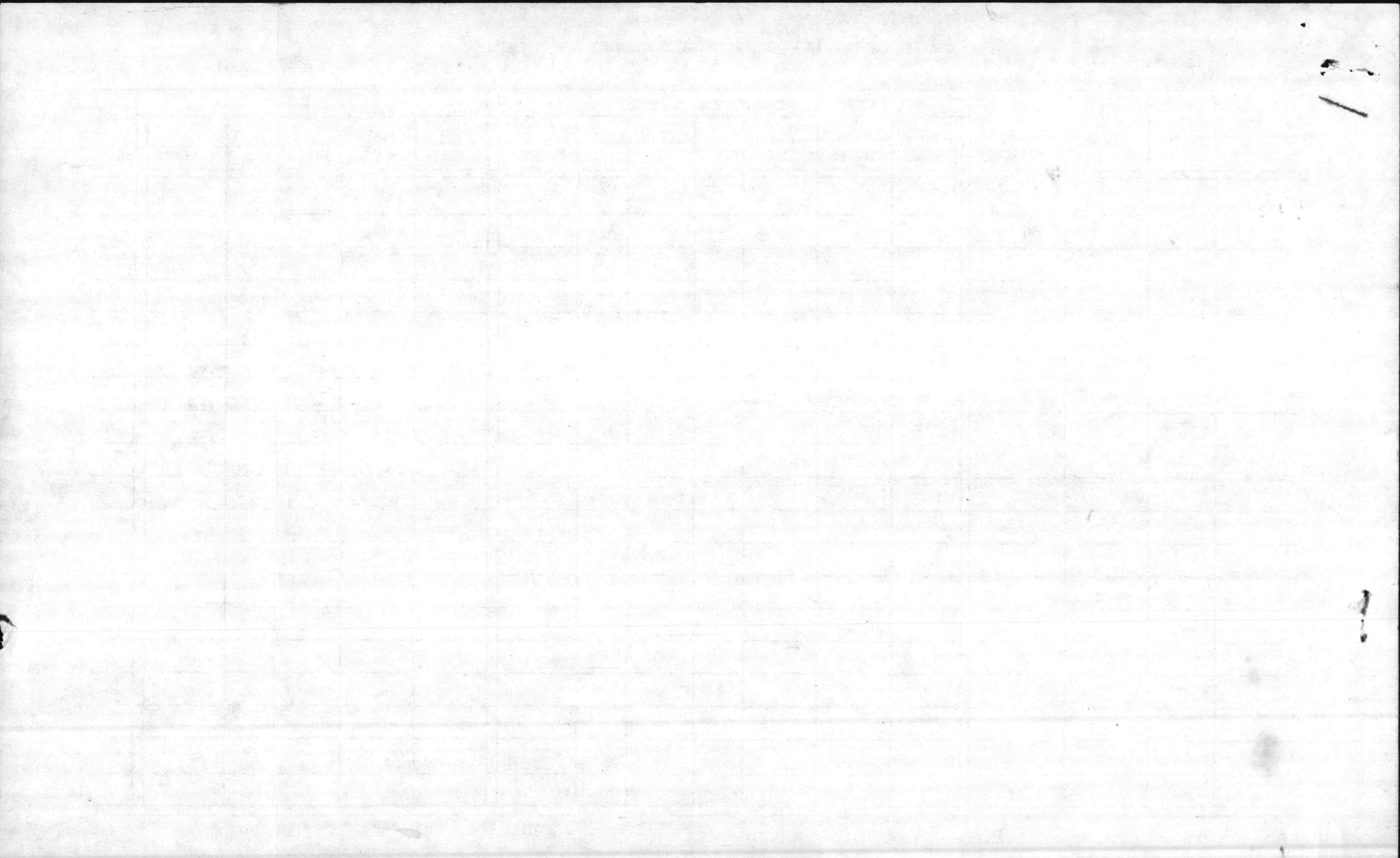
Luhe





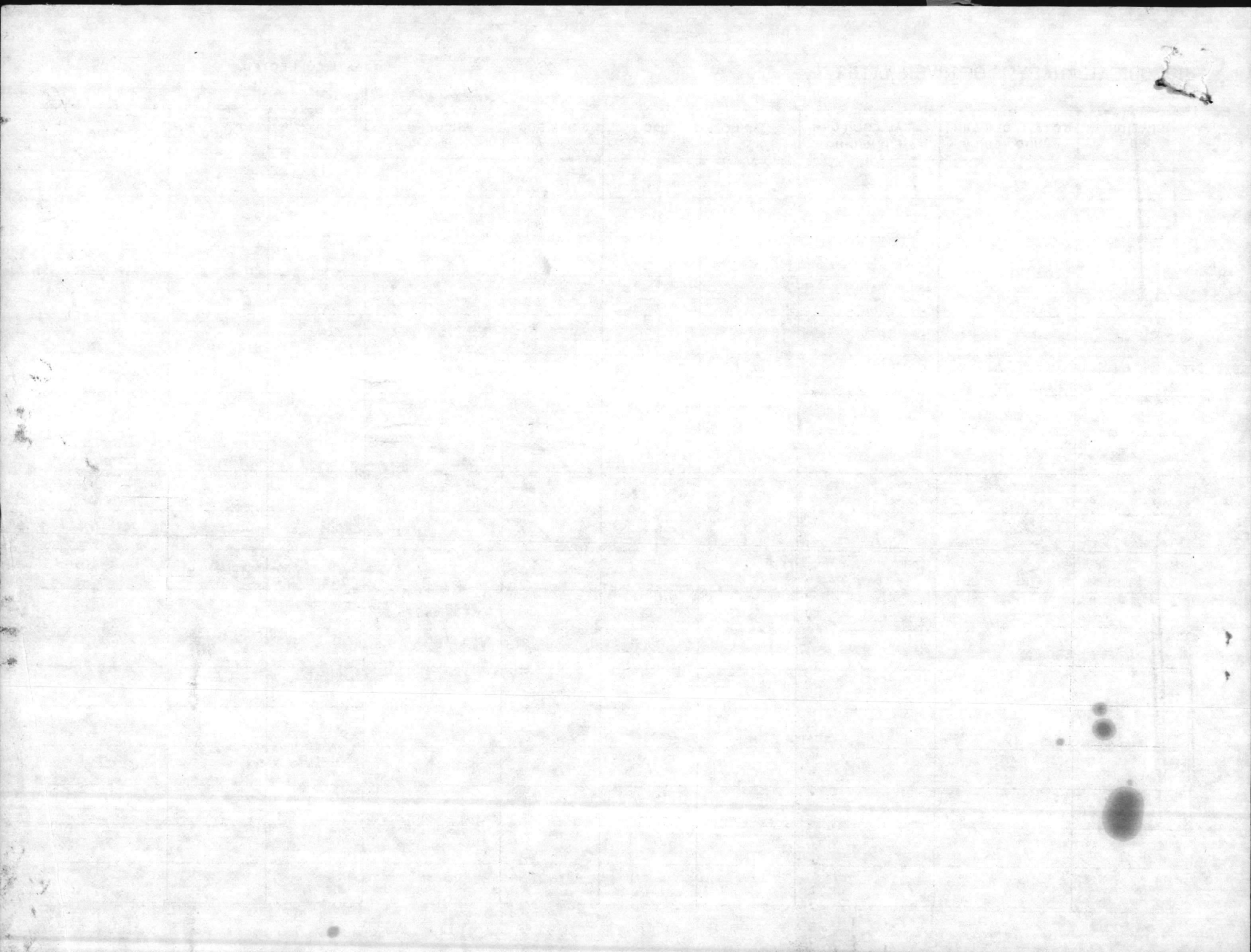














1s<sup>2</sup>

2s<sup>2</sup>

2p<sup>6</sup>

3s<sup>2</sup>

3p<sup>5</sup>

3d<sup>10</sup>

4s<sup>2</sup>

4p<sup>6</sup>

4d<sup>10</sup>

4f



