

Buens + Daines

346-8680

## BIOLOGICAL ANALYSIS OF RIVER WATER

DATE COLLECTED

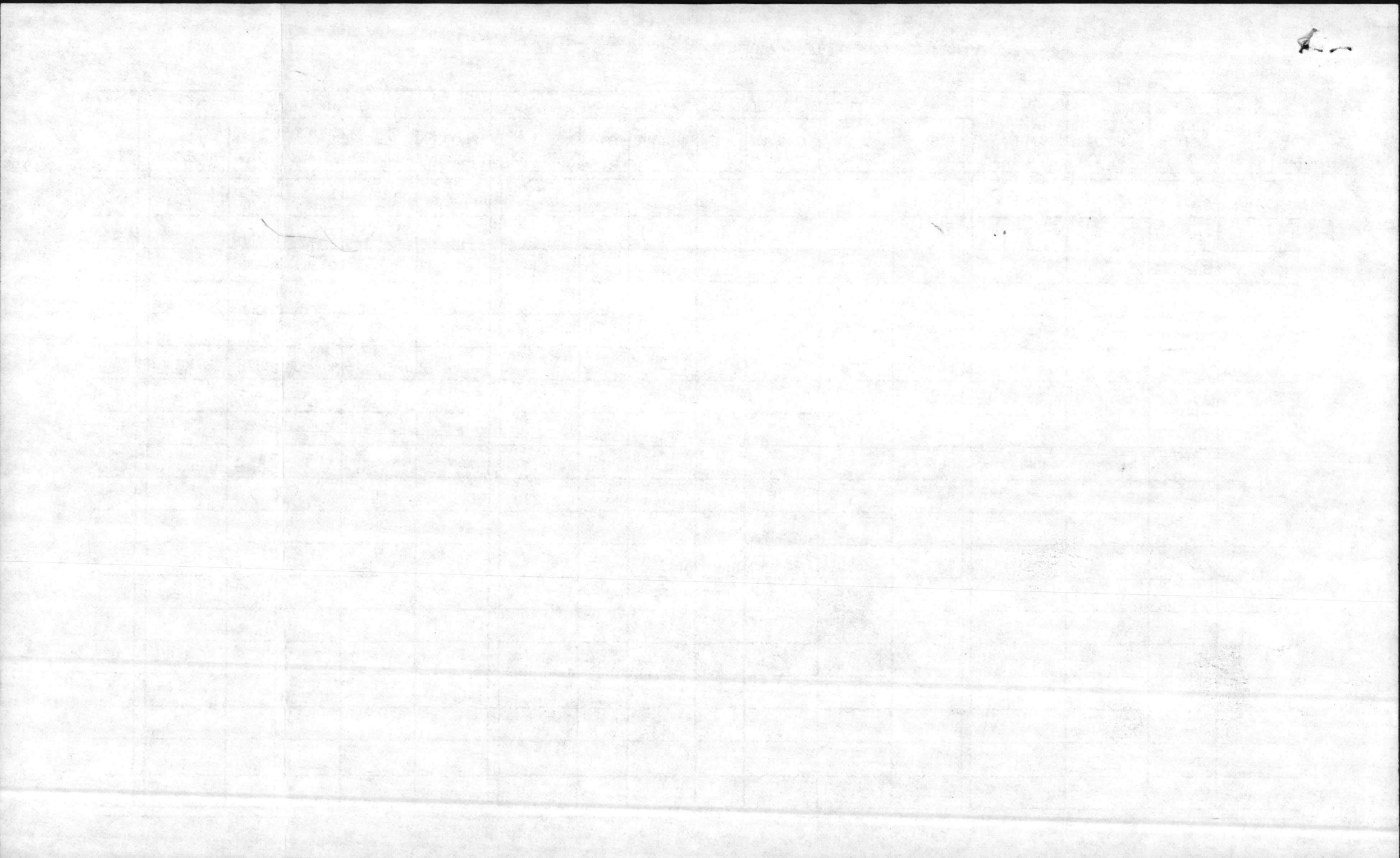
16 FEB 83

MCBCL 11330/6

STATION NO.	TOTAL COLIFORM mENDO MEDIUM	FECAL COLIFORM m F C MEDIUM	TEMP C	DO ppm	5 DAY BOD ppm	CHLORIDES ppm	P. H.	WIND	TIDE
RW-01	10 3700 TNTC	(10) 1070 (25) 1084	10°	8.3	6.4	1.9	6.6	Light NW	Slack
CG	(11)	(10)				0.0			
RW-02	(10) 5400 TNTC	(10) 550 (25) 612	9°	9.2	7.9	1.3	6.5		
CJ	(10)	(10)				0.2			
RW-03	(10) 4600 TNTC	(10) 660 (25) 644	9°	9.0	7.0	2.0	6.5		
TT						0.4	6.5		
RW-04	(11) (10) 2100 TNTC	(10) 400 (25) 460	8°	9.7	8.4	1.3	8.0		
HP						0.8			
RW-05	(25) 192	(50) 46	9°	12.9	9.4	3.5	8.2		
RR						0.4			
RW-06	(25) 16	(50) 0	9°	11.9	9.0	2.9	8.1		
CHB						0.0			
RW-07	(50) 0	(50) 0	10°	9.1	9.0	0.1	8.1		
RW-08	(50) 10	(50) 2	10°	9.8	9.0	0.8	8.2		
OB						0.0			
RW-09	(50) 2	(50) 0	10°	10.0	8.8	1.2			









BIOLOGICAL ANALYSIS OF RIVER WATER

DATE COLLECTED

3-14-83

MCBCL 11330/6

STATION NO.	TOTAL COLIFORM mENDO MEDIUM	FECAL COLIFORM m F C MEDIUM	TEMP C	DO ppm	5 DAY BOD ppm		CHLORIDES ppm	P. H.	WIND	TIDE
1	10 TNTC 1.0 1600	10 280 25 240	12.5	7.0	5.8	1.2	0.2	7.2	SW light	High 1000
CG	10 OVRGRN 1.0 1200	10 90 25 140					0.0	7.2		11
2	10 TNTC 1.0 1500	10 150 25 72	12.5	8.2	6.5	1.7		6.8	11	11 1021
TT	10 100 1.0 0	10 20 25 20					0.0	6.8		
3	10 200 OVRN 1.0 (400) NC	10 70 25 108	14.0	10.2	3.9	6.3		8.4	11	11 1030
CJ	10 OVRGRN 1.0 500	10 70 25 64					0.0			
4	10 100 OVRN 1.0 (300) NC	10 70 25 68	13.0	10.2	6.2	4.0		8.6	med	H 1042
HP	10 (140) 1.0 100	10 70 25 52					0.6			
5	50 OVRGRN	50 56	13.5	11.0	6.2	4.8		8.6	11	H 1058
RR	50 OVRGRN	50 4					0.2			
6	50 OVRGRN	50 12	13.5	9.0	6.8	2.2		8.2	11	outgoing 1116
CHB	50 6	50 2					0.0			
7	50 2	50 0	13.5	8.1	7.0	1.1		8.2	11	11
8	50 2	50 6	14.5	8.1	7.0	1.1		8.2	11	N 1205
OB	50 0	50 0					0.0			
9	50 0	50 6	14.0	8.5	7.2	1.3		8.2	11	N 1152

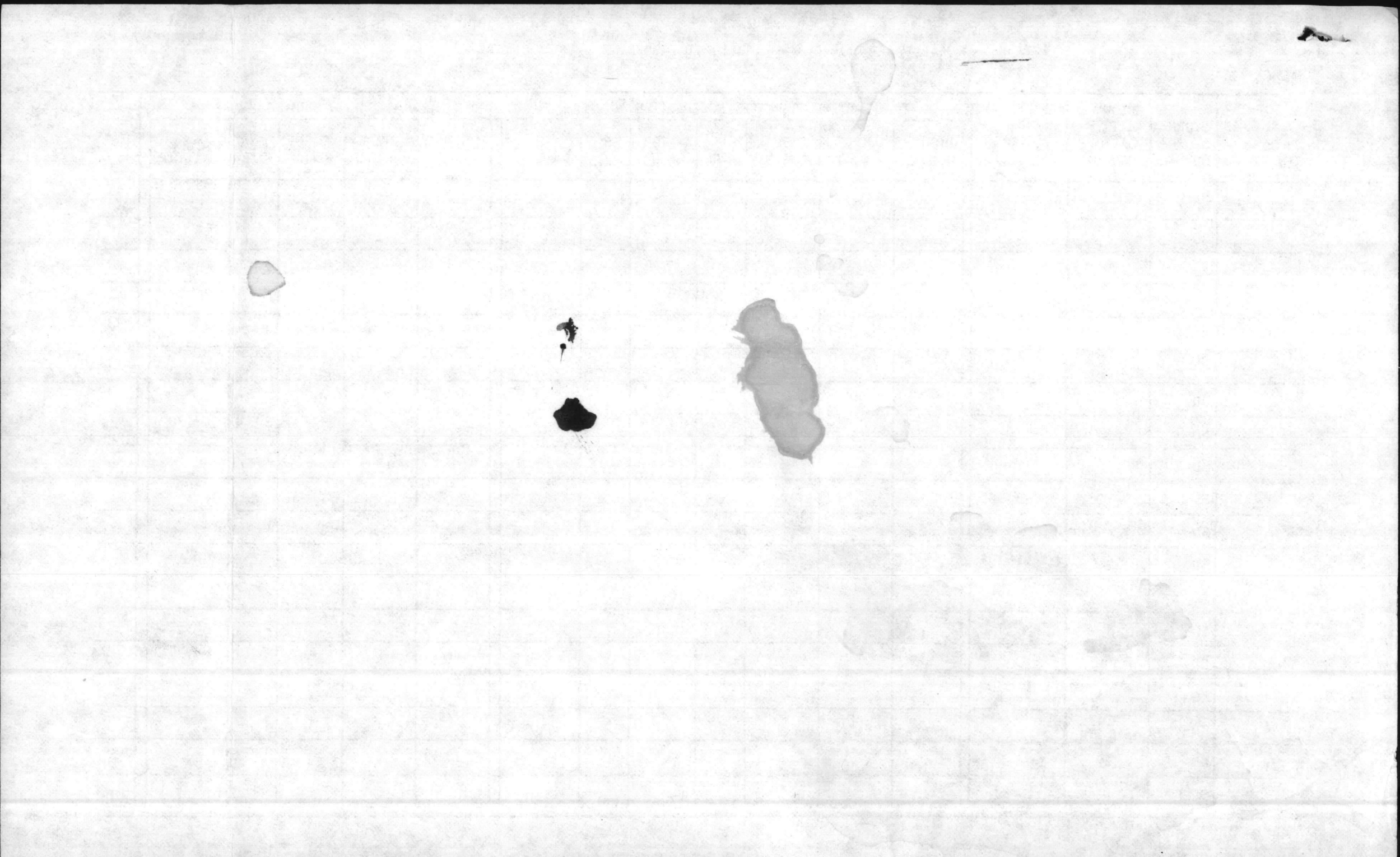


QUALITY CONTROL LAB - STORM SEWER DISCHARGES - WORK SHEET

MCBCL 11345/7

DATE COLLECTED	STORM SEWER NUMBER	FLOW RATE GALLONS PER DAY	SAMPLE COLLECTOR	TOTAL SUSPENDED SOLIDS (TSS)							OIL AND GREASE				pH				
				DISH NUMBER	ml SAMPLE	DISH & SOLID	DISH	WEIGHT GAIN	TSS mg/1	ANALYST	FLASK NUMBER	FLASK & OIL	FLASK	mg/l OIL		ANALYST			
3-14-83	SD-R1											9C	8113	<sup>89</sup> 8102	1/0				
	SD-R2											9A	5277	<sup>69</sup> 5266	1/0				
	SD-R3											2	5536	<sup>68</sup> 5526	1/0				
	SD-R4											3	4944	<sup>66</sup> 4942	0/0				
	SD-R5											4	6266	<sup>68</sup> 6256	1/0				
	SD-R6											5	4299	<sup>68</sup> 4295	0/0				
	SD-R7											6	4961	<sup>67</sup> 4958	0/0				
	SD-R8											7	7412	<sup>67</sup> 7403	1/0				
	SD-R9											9	9392	<sup>68</sup> 9376	2/1				
	SD-											Blank	9B	7427	<sup>69</sup> 7421	1			
	SD-																		
	SD-																		
	SD-																		
	SD-																		
	SD-																		
	SD-																		
	SD-																		
	SD-																		
	SD-																		

1.7435  
 1.76  
 3.5035



# BIOLOGICAL ANALYSIS OF RIVER WATER

MCBCL 11330/6

DATE COLLECTED

4 April 82

STATION NO.	TOTAL COLIFORM mENDO MEDIUM	FECAL COLIFORM m F C MEDIUM	TEMP C	DO ppm	5 DAY BOD ppm	CHLORIDES ppm	P. H.	WIND	TIDE TIME
WC-1	1.0 400 10 200	10 120 25 200							0900
WC-2	1.0 0 10 120	10 30 25 28							0905
WC-3	1.0 0 10 110	10 10 25 12							0920
WC-4	1.0 200 10 280	10 70 25 68							0925
WC-5	1.0 17200 10 TNTC	10 250 25 300							0950
WC-6	1.0 3200 10 TNTC	10 550 25 TNTC							1000
A-1	1.0 1800 10 TNTC	10 170 25 138							1015
Knox Area	1.0 4300 10 TNTC	10 920 25 TNTC							1025
PP Area	1.0 600 10 560	10 40 25 44							1035
General's Dock	1.0 200 10 280	10 20 25 24							1045
TLZ Bluebird	1.0 0 10 0	10 10 25 4							1305
TLZ Poo	+	+							
WC-1	Wallace Creek at bridge								
WC-2	Wallace Creek at Marker #2								
WC-3	South West Creek at Swim Platform								
WC-4	Point upstream from Swim Area at narrow								
WC-5	Wilson Bay at mouth								
WC-6	Northeast Creek below Lagoon (Holiday City) discharge creek.								
A-1	N.E. Creek at Scout Camp.								

DATE

TIME

WIND

TEMP

HUMIDITY

SEA

SKY

MOON

STARS

PLANETS

COMETS

OTHER

REMARKS

BY

NO.

DATE

TIME

WIND

TEMP

HUMIDITY

SEA

SKY

MOON

STARS

PLANETS

COMETS

OTHER

REMARKS

BY

NO.

DATE

TIME

WIND

TEMP

HUMIDITY

SEA

SKY

MOON

STARS

PLANETS

COMETS

OTHER

REMARKS

BY

NO.

2000

10

10

10

10

10

10

10

10

10

10

10

10

10







BIOLOGICAL ANALYSIS OF RIVER WATER

DATE COLLECTED

4 April 82

MCBCL 11330/6

STATION NO.	TOTAL COLIFORM mENDO MEDIUM	FECAL COLIFORM m F C MEDIUM	TEMP C	DO ppm	5 DAY BOD ppm		<del>CL</del> CHLORIDES ppm	P. H.	WIND 0+6	TIDE TIME
RW-1	1.0-9800 10-TNTC 1.0-11100	10 280 25 148 10 150	14.0	6.3	5.3	1.0		7.4	0.0	0940
CG	10-TNTC 1.0-4600	25 108 10 800					0.2			0945
RW-2	10-TNTC 1.0-600	25 TNTC 10 60	14.0	7.5	6.5	1.0		6.7	0.0	1010
TT	10-TNTC 1.0-9000	25 44 10 270					0.4			1020
RW-3	10-TNTC 1.0-400	25 200 10 70	14.5°	8.0	7.3	0.7		7.1	0.0	1030
CJ	10-470 1.0-0	25 108 10 0					0.0			1040
RW-4	10-110 1.0-0	25 4 10 0	14.0	9.2	8.3	0.9		7.6	0.0	1116
HP	10-60	25 4					0.0			1130
RW-5	25-36	50 20	14.5°	9.6	8.4	1.2		7.9	0.0	1135
RR	50-6	50 0					0.2			1145
RW-6	50-4	50 8	15°	10.0	8.0	2.0		8.3	0.0	1200
CMB	50-0	50 2					1.5			1210
RW-7	50-0	50 0	15°	8.7	8.1	0.6		8.2	0.0	1215
RW-8	50-2	50 2	15°	8.8	8.2	0.6		8.2	0.0	1235
OB	50-2	50 2					0.0			1250
RW-9	50-4	50 4	15°	9.2	8.3	0.9		8.3	0.0	1300
Pos	+	+								
Neg	-	-								

B



**BIOLOGICAL ANALYSIS OF RIVER WATER -**

DATE COLLECTED

MCBCL 11330/6

4-4-83

STATION NO.	TOTAL COLIFORM mENDO MEDIUM	FECAL COLIFORM m F C MEDIUM	TEMP C	DO ppm	5 DAY BOD ppm	CHLORIDES ppm Cl <sub>2</sub>	P. H.	WIND	TIDE Time
WC-1	at Bridge								0900
WC-2	at marker #2								0905
WC-3 S.	w. creek at platform								0920
WC-4	Point us from (5)								0925
RW1			14°	6.3			7.4		0940
CG						0.2			0945
WC-5	WILSON BAY at marker								0950
WC-6	NE CREEK - LAGOONS								1000
RW2			14 <sup>8</sup>	7.5			6.7		1010
PA-1	BREWSTER SCOTT CAMP								1015
TI						0.4			1020
KNOX AREA									1025
RW3			14.5°	8.0			7.1		1030
PR GOLF COURSE AREA									1035
CJ						0.0			1040
GENERAL'S DOCK									1045
RW4			14.0°	9.2			7.6		1100
HP						0.0			1130
RW5			14.5°	9.6			7.9		1135





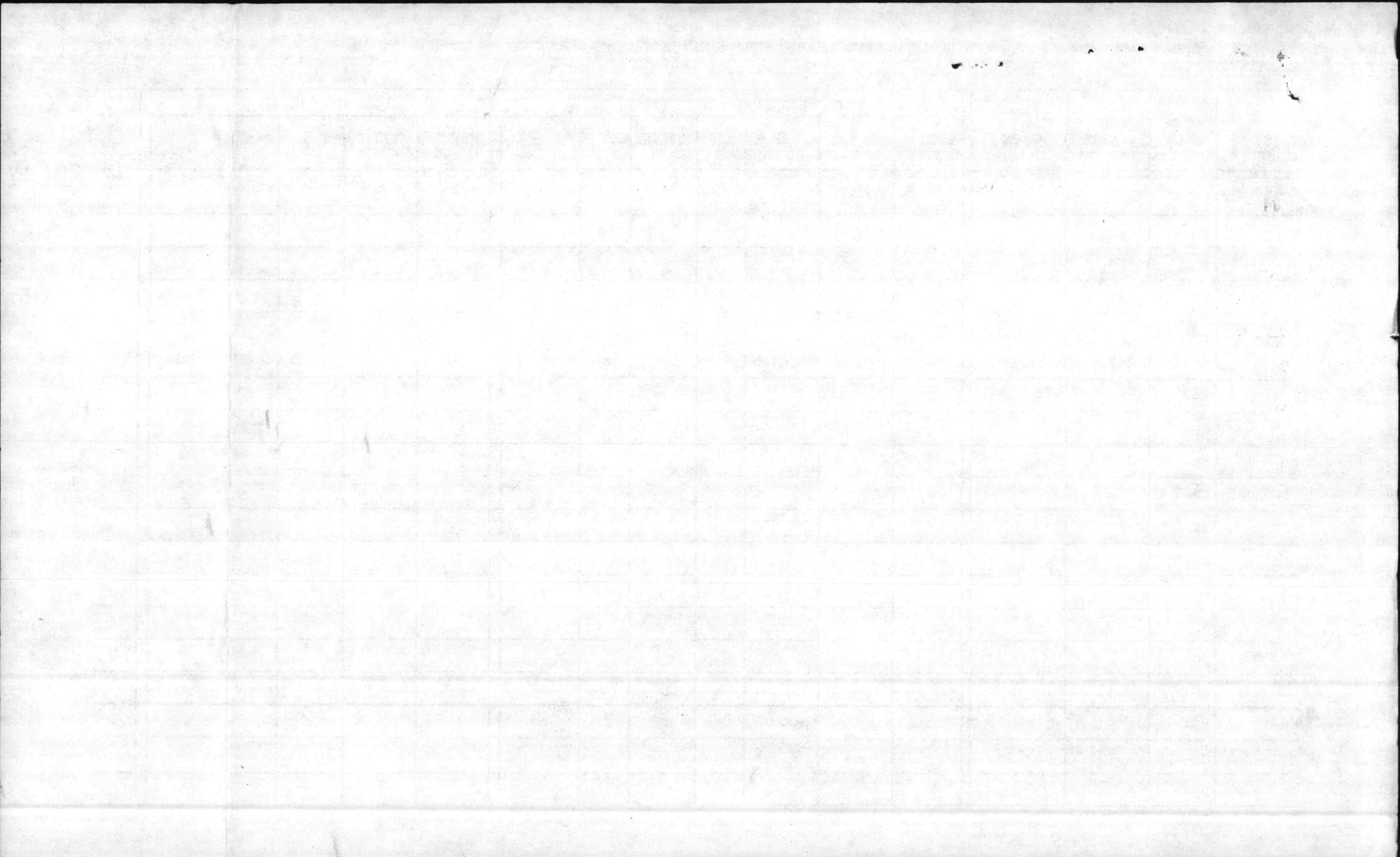


QUALITY CONTROL LAB - STORM SEWER DISCHARGES - WORK SHEET

MCBCL 11345/7

DATE COLLECTED	STORM SEWER NUMBER	FLOW RATE GALLONS PER DAY	SAMPLE COLLECTOR	TOTAL SUSPENDED SOLIDS (TSS)							OIL AND GREASE					pH	
				DISH NUMBER	ml SAMPLE	DISH & SOLID	DISH	WEIGHT GAIN	TSS mg/l	ANALYST	FLASK NUMBER	FLASK & OIL	FLASK	mg/l OIL	ANALYST		
Blank	SD-		Honeycutt Betty									5	<sup>68</sup> 4314	<sup>68</sup> 4266	4.8	Honeycutt	
RW-1	SD-											7	<sup>67</sup> 7419	<sup>67</sup> 7371	4.8 / 0		
RW-2	SD-											9	<sup>68</sup> 9374	<sup>68</sup> 9360	1.4 / 0		
RW-3	SD-											6	<sup>67</sup> 4973	<sup>67</sup> 4934	3.9 / 0		
RW-4	SD-											3	<sup>66</sup> 4959	<sup>66</sup> 4920	3.9 / 0		
RW-5	SD-											9A	<sup>69</sup> 5288	<sup>69</sup> 5258	3.0 / 0		
RW-6	SD-											9B	<sup>69</sup> 7445	<sup>69</sup> 7419	2.6 / 0		
RW-7	SD-											9C	<sup>69</sup> 8129	<sup>69</sup> 8102	2.7 / 0		
RW-8	SD-											2	<sup>68</sup> 5547	<sup>68</sup> 5521	2.6 / 0		
RW-9	SD-											4	<sup>68</sup> 6277	<sup>68</sup> 6251	2.6 / 0		
	SD-																
	SD-																
	SD-																
	SD-																
	SD-																
	SD-																
	SD-																
	SD-																
	SD-																
	SD-																

(FTR) - T x 1000  
1000





Betz + LOCHAPELLE

## BIOLOGICAL ANALYSIS OF RIVER WATER

MCBCL 11330/6

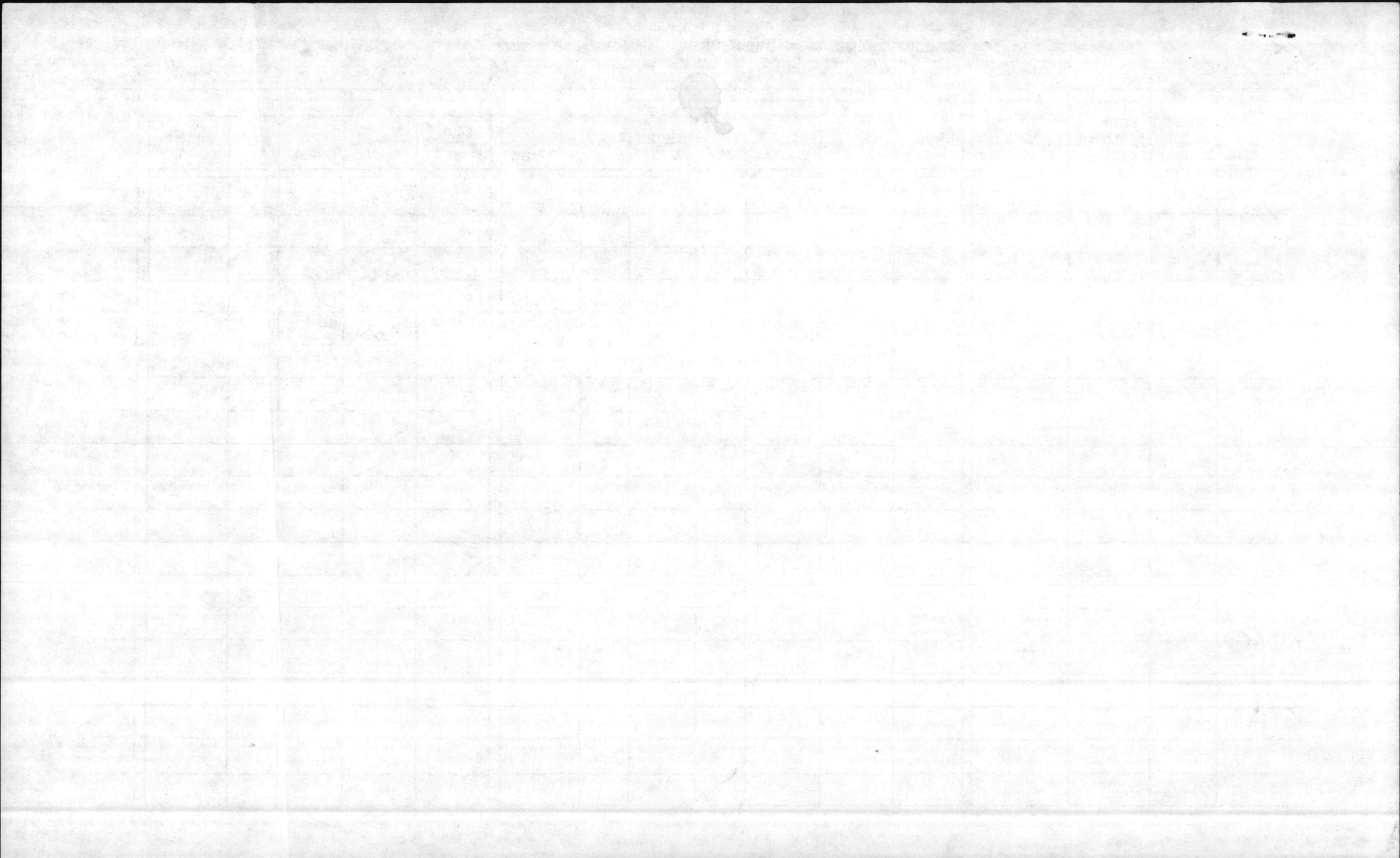
DATE COLLECTED

25 MAY 1983

STATION NO.	TOTAL COLIFORM mENDO MEDIUM	FECAL COLIFORM m F C MEDIUM	TEMP C	DO ppm 5AM	5 DAY BOD ppm	CHLORIDES ppm Cl <sub>2</sub>	P. H.	WIND	TIDE TIME
RW01	(1) 100	(1) 100	25°	8.7	1.1	7.6	8.5		0931
CG	(25) mercury	(25) 12							CG 0937
CG									WB 0939
									BM 0955
RW02	(1) 300	(1) 0	25°	6.8	2.7	4.1	7.8		1006
	(25) mercury	(25) 4							TT 1012
RW03	(1) 0	(1) 0	24.5°	6.8	3.8	3.8	7.8		1019
	(25) 60	(25) 4							OK 1015
									GT 1021
RW04	(50) 4	(50) 0	24.0	7.1	4.7	2.4	8.1		1033
									HP 1038
RW05	(50) 0	(50) 0	24.0	7.2	5.4	1.4	8.2		1046
									RR 1054
RW06	(50) 16	(50) 4	24.0	7.0	5.7	4.3	8.1		1101
									CHB 1106
RW07	(50) 38	(50) 26	22.0	7.0	6.8	0.2	8.1		1113
RW09	(50) 38	(50) 36	22.5	6.6	6.2	0.4	8.1		1137
						WE FOUND IT			OB 1123
RW08	(50) mercury	(50) 94	21.0	7.0	7.0	0.0	8.2		1128







**BIOLOGICAL ANALYSIS OF RIVER WATER**

MCBCL 11330/6

DATE COLLECTED

6 June 83

STATION NO.	TOTAL COLIFORM mENDO MEDIUM	FECAL COLIFORM m F C MEDIUM	TEMP C	DO ppm	5 DAY BOD ppm	CHLORIDES ppm <i>Cl<sub>2</sub></i>	P. H.	WIND	TIDE TIME
RW-1	25 mercur 1.0 560	25 56 1.0 100	25	9.0	3.0 6.0		8.7	SW-3-5	0955
CG	25 mercur 1.0 1200	25 200 1.0 200				1.5			1006
CI						4.0			1016
CT						0.6			1020
Holiday City	640	1210							1024
RW-2	25 mercur 1.0 1200	25 296 1.0 200	26	6.9	4.3 2.6		7.8		1035
RW-3	25 mercur 1.0 100	25 52 1.0 0	26	6.1	3.5 2.6		7.8		1040
RW4	50 94	50 6	26	6.9	4.9 2.0		8.1	SW 8-12	1048
HP						1.5			1100
RW5	50 4	50 6	6	6.9	5.5 1.4		8.1		1110
R7						0.0			1123
RW=6	50 2	50 0	25	7.0	5.7 1.3		8.2		1134
CNB			24			0.6			1140
RW-7	50 4	50 4	24.5	6.7	6.4 0.3		8.2		1145
RW 9	50 0	50 6	24.5	6.5	6.1 0.4	0.6	8.2		1157
OB						0.6			1203
RW-8	1.0 100 50 mercur	50 50	24.5	6.0	5.7 0.3		8.1		1205

out going tide  
 TIDE  
 → NE

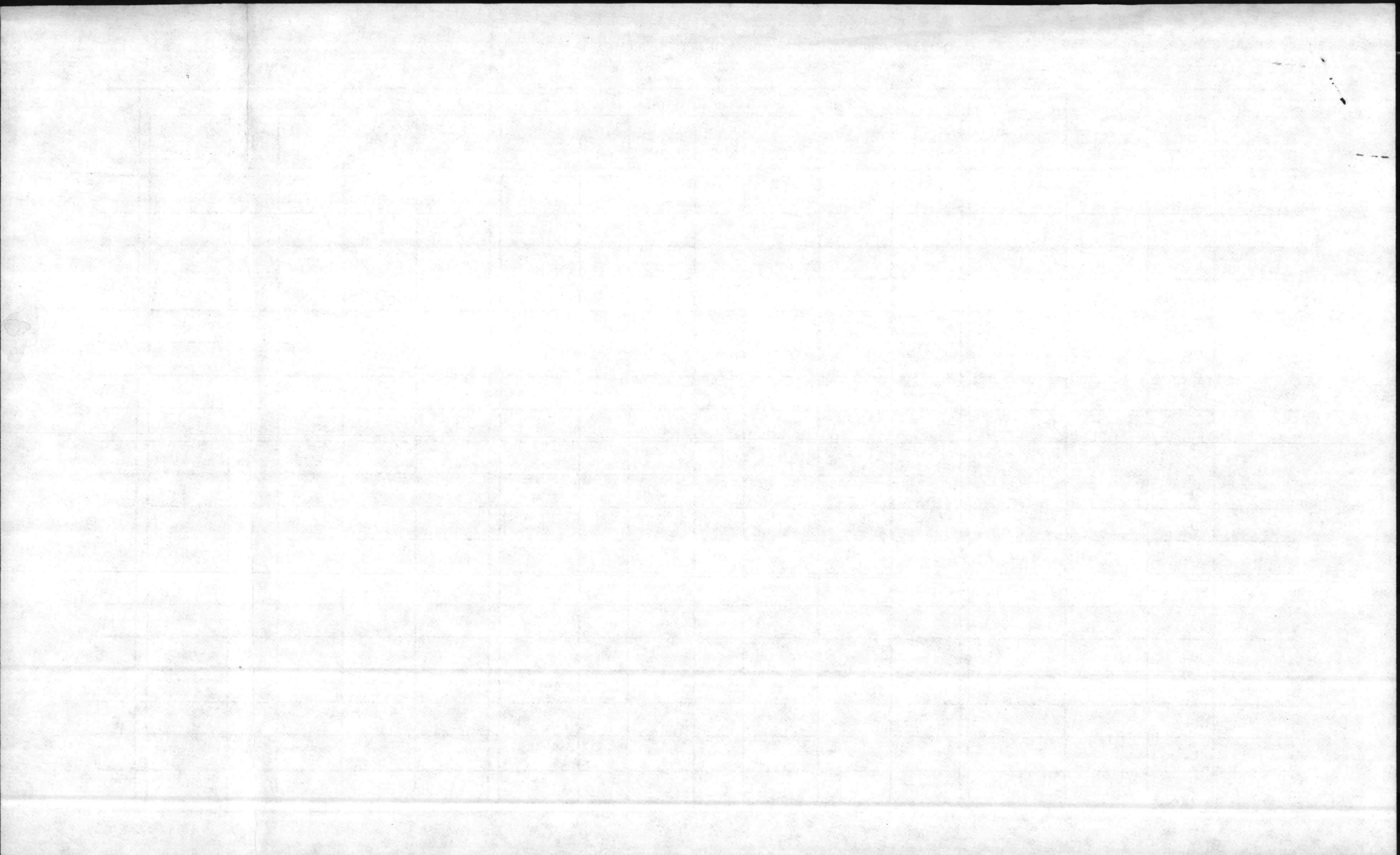
Wilson Bay

0951 6/6/83

Holiday City

1024 6/6/83







BIOLOGICAL ANALYSIS OF RIVER WATER

MCBCL 11330/6

DATE COLLECTED

5 Day

11 July 83

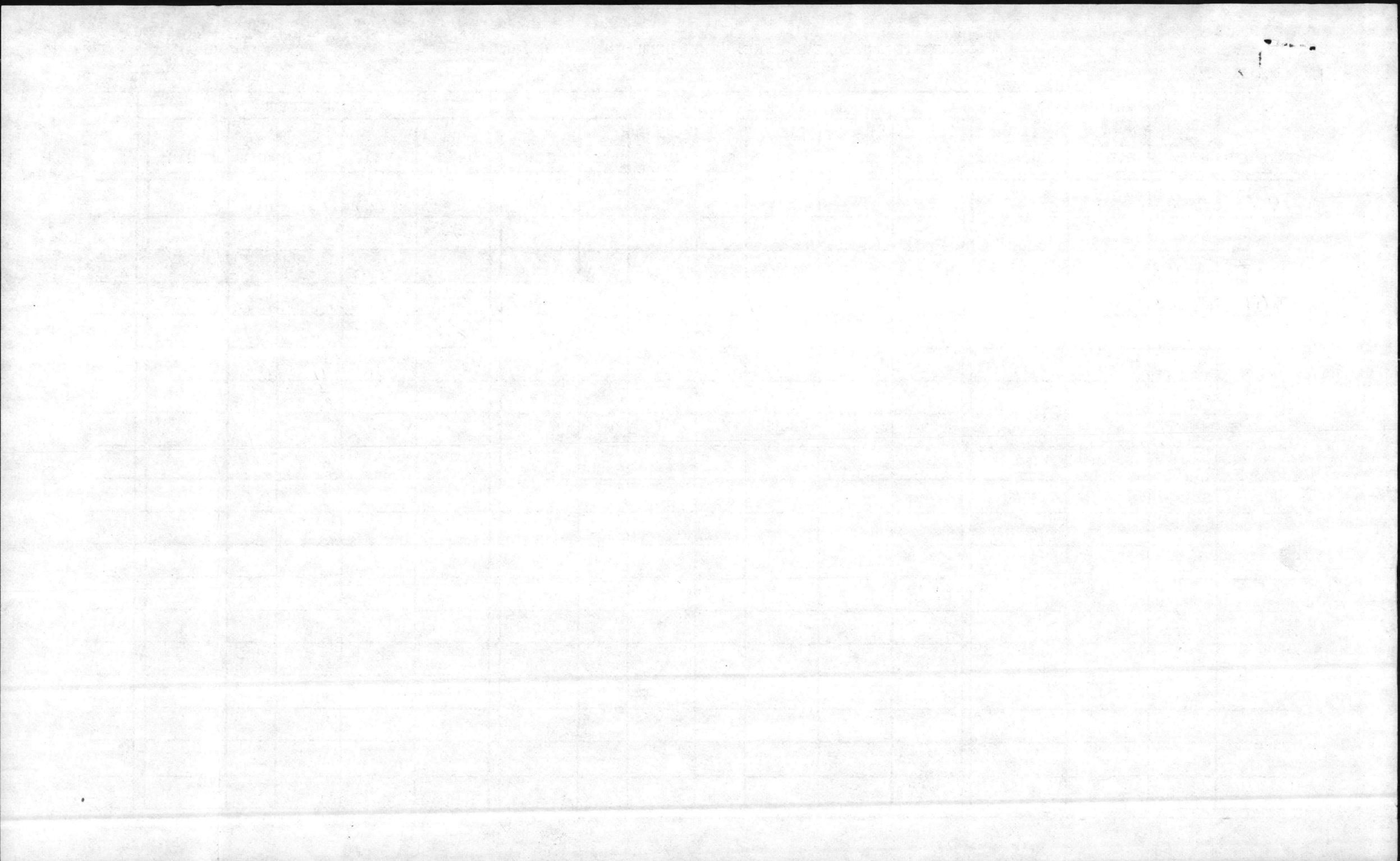
STATION NO.	TOTAL COLIFORM mENDO MEDIUM	FECAL COLIFORM m F C MEDIUM	TEMP C	DO ppm	<del>5 DAY</del> BOD ppm	CHLORIDES 1300 ppm	P. H.	WIND	TIDE
Rw 1			28°	7.4	0.0	7.4	8.4	SE 5-8	0940
CG	- 0.1	cl. Resid		4.9					
TT	- 0. -	(very little flow)							
Rw 02			29°	4.9	1.2	3.7	8.1		1005
Rw 03			28	6.8	2.9	3.9	8.4		1010
MP	- T -	NO FLOW							
RW 4			28	6.9	2.8	4.1	8.4		1025
HP OF	1.0	cl2 - NO FLOW							
RW 5			28	7.0	3.7	3.3	8.3	LGT-VAR	1040
RR OF	T	NO FLOW							
Rw 6			27	6.1	3.7	2.4	8.1	INCOMING TIDE	1100
CHB	0.1	cl2 - NO FLOW							
Rw 7			27°	6.5	5.6	0.9	8.3	INCOMING TIDE	1110
Rw 9			27°	6.0	4.7	1.3	8.1	→ SW	1120
OB	0.2	cl2 - GOOD FLOW							
RW 8			27°	6.5	5.8	0.7	8.2	→ SW	1132











BIOLOGICAL ANALYSIS OF RIVER WATER

DATE COLLECTED  
8 Aug 83

MGBCL 11330/6

STATION NO.	TOTAL COLIFORM mENDO MEDIUM	FECAL COLIFORM m F C MEDIUM	TEMP C	DO ppm	5 DAY BOD ppm	CHLORIDES ppm	P. H.	WIND	TIME TIDE
RW01			29.0	5.3	2.0 3.3		8.2	W/VREL	Morning
CG	cl <sup>2</sup> Resid 1.5								
CJ	"	0.0							
TT	"	0.4							
RW02			29.0	5.4	2.3 3.1		8.1	SW3-5	NO
RW03			29.5	5.6	3.8 1.8		8.4	✓	NO
RW04			29.5	6.0	3.2 2.8		8.5	✓	NO
RW05		4	28.0	6.0	3.7 2.3		8.5	CALM	
RR		0.8-						✓	
RW06			28.0	5.5	2.7 2.8		8.4	SW 5	Morning SBR
CHB		1.5							
RW07			28.0	5.7	4.5 1.2		8.3	SW 5	SBR
RW09				5.5	3.8 1.7		8.3	✓	
RW08			28.5	5.9	5.2 0.7		8.2	✓	NE flow
OB		1.5							
RW09			29.0	5.1	3.8 1.2				NE flow







BIOLOGICAL ANALYSIS OF RIVER WATER

STATION NO.

DATE OF COLLECTION

LOCAL COORDINATES

TIME

MOON

WIND DIRECTION

WIND VELOCITY

TEMP.

WAVE

REMARKS

10

10/10/50

100° 00' W

10:00 AM

Clear

10 mph

100° W

100° W

100° W

100° W

100° W

100° W

100° W

100° W

100° W

100° W

100° W

MCBCL 11345/7

RIVER POINT

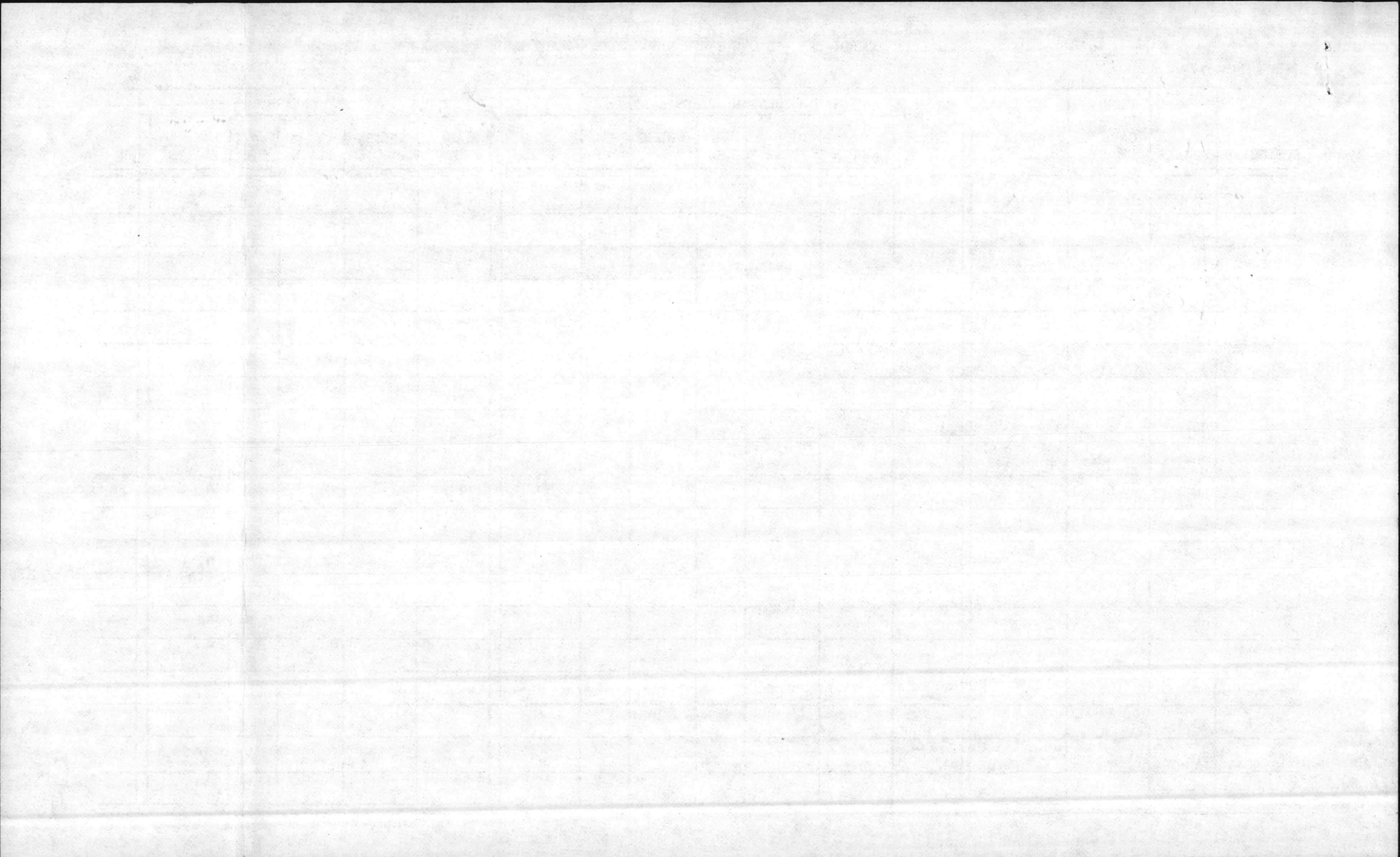
QUALITY CONTROL LAB - STORM SEWER DISCHARGES - WORK SHEET

DATE COLLECTED	STORM SEWER NUMBER	FLOW RATE GALLONS PER DAY	SAMPLE COLLECTOR	TOTAL SUSPENDED SOLIDS (TSS)							OIL AND GREASE				pH		
				DISH NUMBER	ml SAMPLE	DISH & SOLID	DISH	WEIGHT GAIN	TSS mg/l	ANALYST	FLASK NUMBER	FLASK & OIL	FLASK	mg/l OIL		ANALYST	
8 Aug 83	RW SD-01		cm								850	2	.5547	.5573	3.4	2	
	SD-02										850	3	.4949	.4919	3.0	1	
	SD-03										850	4	.6266	.6252	1.4	0	
	SD-04										850	5	.4303	.4282	2.1	0	
	SD-05										850	7	.7408	.7390	1.8	0	
	SD-06										850	9	.9389	.9372	1.7	0	
	SD-07										850	9A	.5283	.5264	1.9	0	
	SD-08										850	9C	.8121	.8100	2.1	0	
	SD-09										1150	10	.1044	.1024	2.0	0	
	SD Blank										1150	9B	.7446	.7428	1.8	-	
	SD-											(no room for standard)					
	SD-																
	SD-																
	SD-																
	SD-																
	SD-																
	SD-																
	SD-																
	SD-																

Sample  
of  
River

Adj. Stand  
& Vol.

Monitor







# BIOLOGICAL ANALYSIS OF RIVER WATER

MCBCL 11330/6

DATE COLLECTED

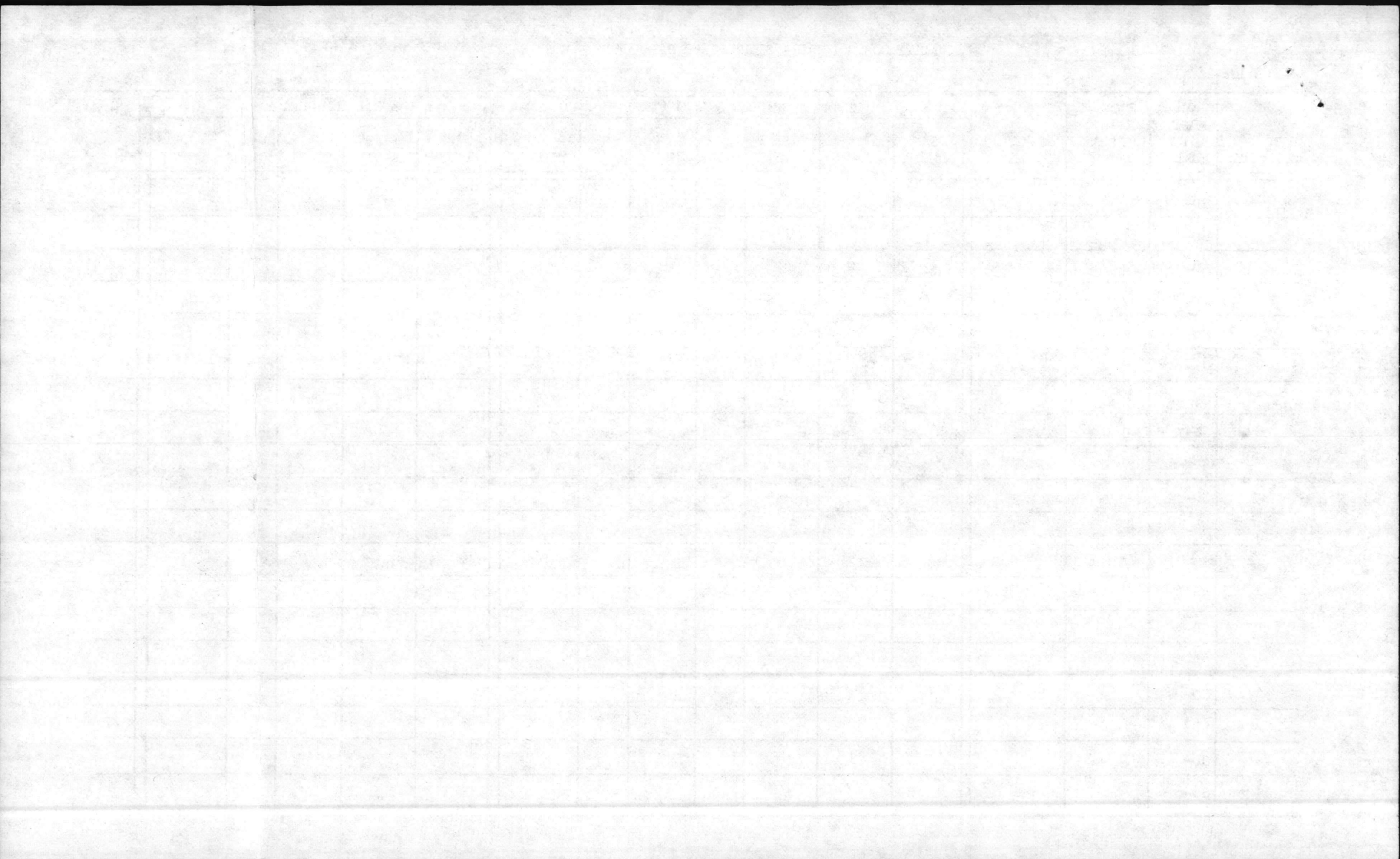
9/12/83

STATION NO.	TOTAL COLIFORM mENDO MEDIUM	FECAL COLIFORM m F C MEDIUM	TEMP C	DO ppm	5 DAY BOD ppm	CHEMIDES	<del>PH</del> pH	<del>WIND</del> ToTal	<del>WIND</del> fecal
Rw-01	(1) 200 (10) 06	(1) 0 (25) 92				WALFACE CK			
Rw-02	(1) 0 (10) 10	(1) 0 (25) 8				1	0.1 0 1.0 0	0.1 0 1.0 0	
Rw-03	(1) 0 (10) 10	(1) 0 (25) 4				2	0.1 0 1.0 0	0.1 0 1.0 0	
Rw-04	(1) 0 (25) 0	(25) 0				3	0.1 0 1.0 0	0.1 0 1.0 0	
Rw-05	(1) 0 (25) 0	(25) 0				4	0.1 0 1.0 0	0.1 0 1.0 0	
Rw-06	(1) 0 (25) 0	(25) 0				5	0.1 0 1.0 0	0.1 0 1.0 0	
Rw-07	(1) 0 (25) 0	(25) 0				6	0.1 0 1.0 0	0.1 0 1.0 0	
Rw-08	(1) 0 (25) 0	(25) 0							
Rw-09	(1) 0 (25) 0	(25) 0							
NP-OF	(1) 100 (10) 90	(1) 0 (25) 20							
JT-OF	(1) 0 (10) 30	(1) 0 (25) 4							
CG-OF	(1) 0 (10) 20	(1) 100 (25) 68							
CJ-OF	(1) 0 (10) 0	(1) 0 (25) 0							
OB-OF	(25) 4	(25) 8							
CHA-OF	(25) 0	(25) 0							
RR-OF	(25) 0	(25) 0							
Wilson Bay	(1) 100 (10) 20	(1) 0 (25) 8							
Knox	(1) 0 (10) 0	(1) 0 (25) 0	NS						
BRYAN HALL	(1) 0 (10) 0	(1) 0 (25) 12							













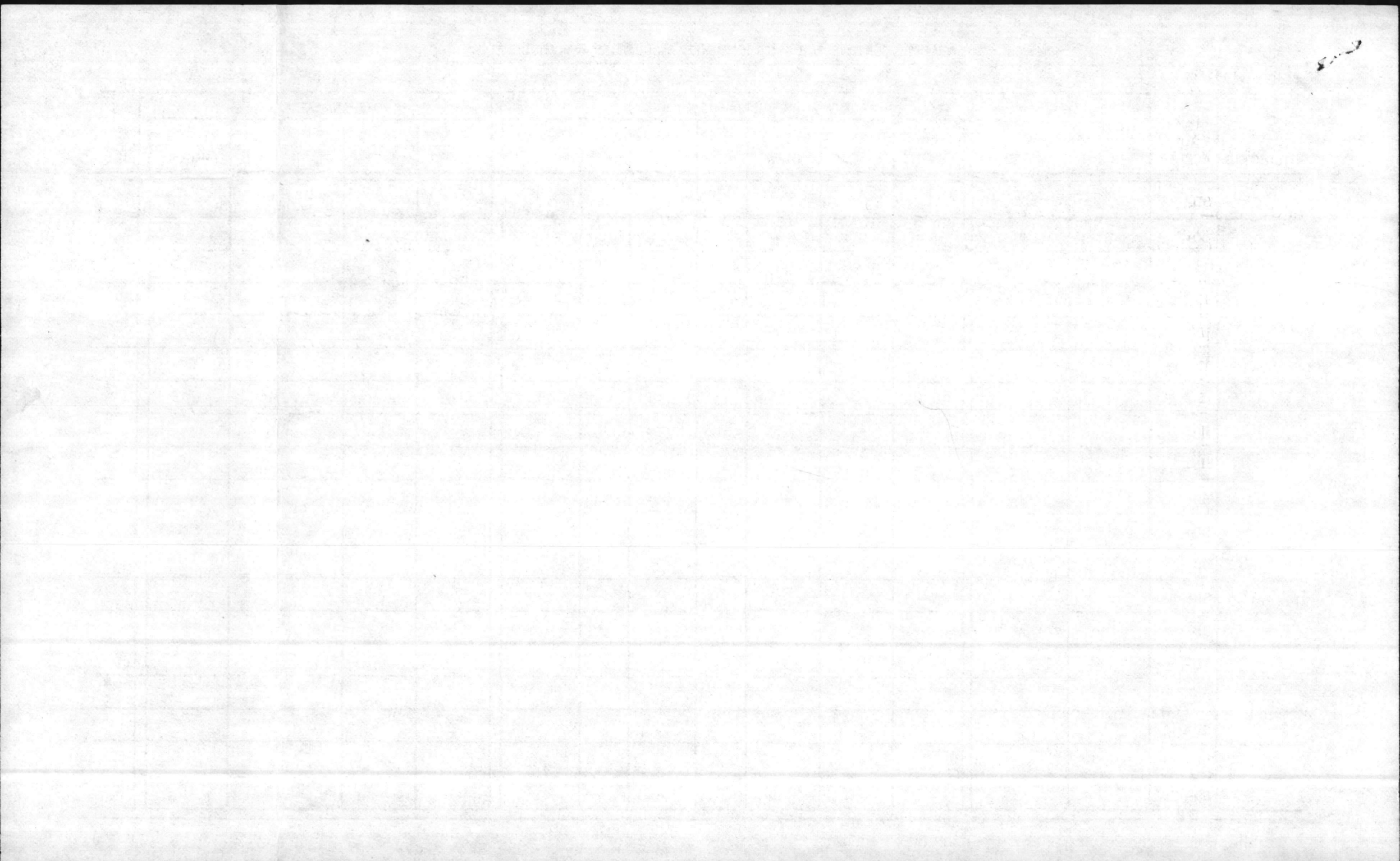
MCBCL 11345/7

*river data*

QUALITY CONTROL LAB - STORM SEWER DISCHARGES - WORK SHEET

DATE COLLECTED	STORM SEWER NUMBER	FLOW RATE GALLONS PER DAY	SAMPLE COLLECTOR	TOTAL SUSPENDED SOLIDS (TSS)							OIL AND GREASE						
				DISH NUMBER	ml SAMPLE	DISH & SOLID	DISH	WEIGHT GAIN	TSS mg/l	ANALYST	FLASK NUMBER	FLASK & OIL	FLASK	mg/l OIL	ANALYST	pH	
17 Oct 83	<del>SD-01</del>		H+M								<i>Block</i>	78-1	.0944	.0941	+0.3	<i>Adjust Block</i>	
	<del>SD-02</del>											-2	.1018	.1000	+1.8	2	
	<del>SD-03</del>											-3	.1335	.1325	+1.0	1	
	<del>SD-04</del>											-4	.3212	.3195	+1.7	2	
	<del>SD-05</del>											-5	.3787	.3770	+1.7	1	
	<del>SD-06</del>											-6	.4496	.4475	+2.1	2	
	<del>SD-07</del>											-7	.5002	.4980	+1.2	1	
	<del>SD-08</del>											-8	.6905	.6882	+2.3	2	
	<del>SD-09</del>											-9	.8065	.8034	+3.1	3	
	SD-											-10	.9629	.9613	+1.6	1	
	SD-																
	SD-																
	SD-																
	SD-																
	SD-																
	SD-																
	SD-																
	SD-																

*Adjust Block and Volume Reported value*



MONAHAN & BETZ

BIOLOGICAL ANALYSIS OF RIVER WATER

MCE L 11330/6

Recorded 6 Dec 83

DATE COLLECTED

30 NOVEMBER 1983

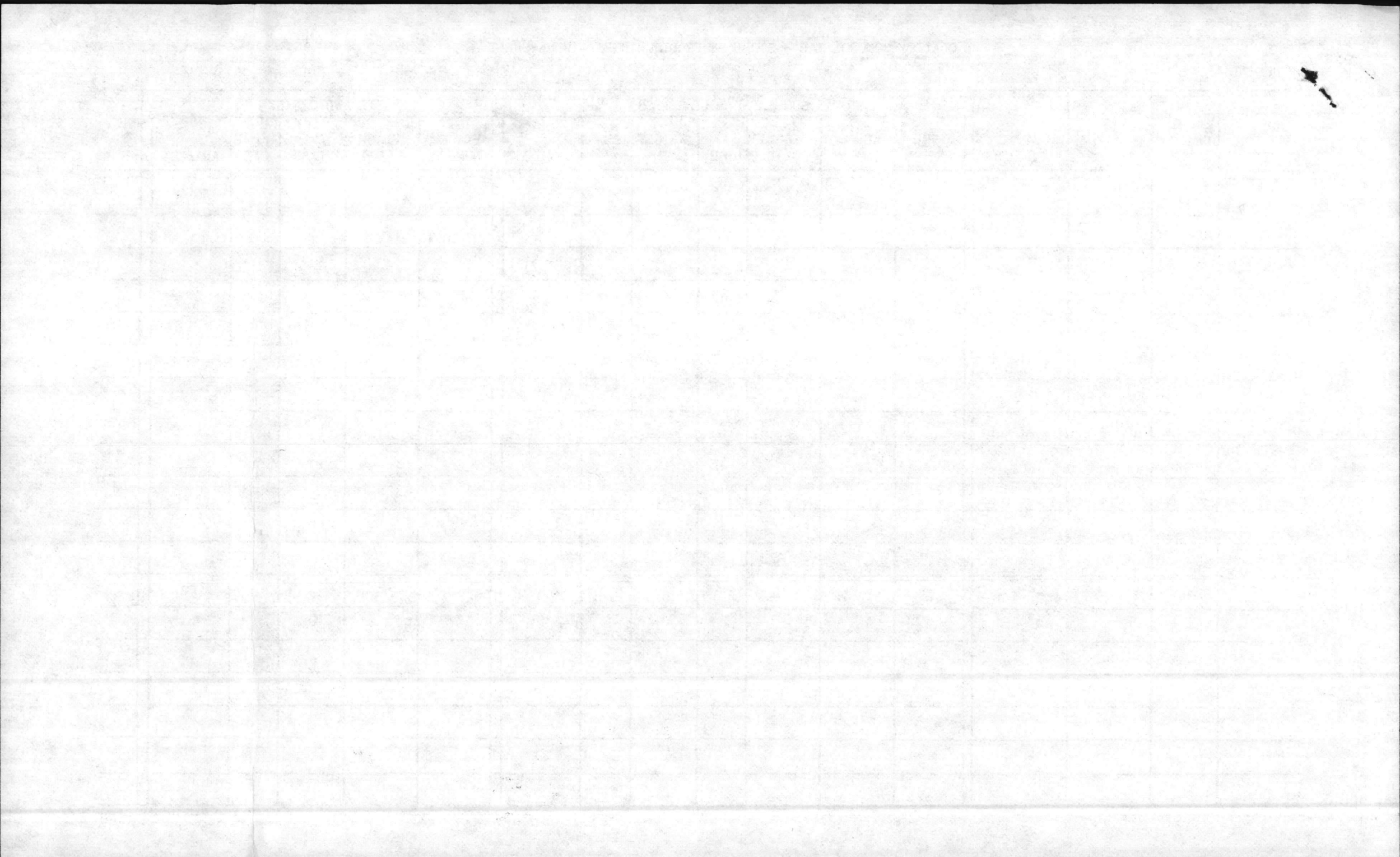
STATION NO.	TOTAL COLIFORM mENDO MEDIUM	FECAL COLIFORM m F C MEDIUM	TEMP C	DO ppm	5 DAY BOD ppm	CHLORIDES ppm Cl <sub>2</sub>	P. H.	WIND	TIDE TIME
PW01	1 0 10 330	10 50 25 88	14	9.4	2.5	6.9	7.3	NW 5-10	9:55
CG						40.2			10:00
WILSON BR									10:03
SW CREEK									10:11
LAGOONS									10:28
RW02	1 1500 10 THTC	10 260 25 276	15	8.9	5.4	3.5	7.9		10:35
TT						0.6			10:40
PW03	1 0 10 60	10 10 25 32	14	9.8	4.4	5.4	8.3		10:45
CJ						>4.0			10:50
PW04	1 100 10 10	10 30 25 20	14	9.6	6.1	3.5	8.4		11:00
HP						1.5			11:10
PW05	50 2	50 0	14	8.9	6.2	2.7	8.3		11:16
PK						0.2			11:30
PW06	50 2	50 0	14	9.0	7.2	1.8	8.3		11:38
CHB						0.8			11:45
RW07	50 4	50 2	14	8.5	7.5	1.0	8.3	OUTGOING TIDE	11:50
PW08	50 2	50 6	14	8.2	7.2	1.0	8.2	OB'S DOWNSTREAM	12:10
OB						0.4	8.3		12:08
RW09	50 2	50 4	14	8.2	7.5	0.9		OB'S UPSTREAM	12:00

Clear dike between RW-6 + RW-9









BIOLOGICAL ANALYSIS OF RIVER WATER

Recorded  
~~12/13/83~~ 1/13/84 *OB*

DATE COLLECTED

5 Dec. 83

MCBCL 14330/6

STATION NO.	TOTAL COLIFORM m ENDO MEDIUM	FECAL COLIFORM m F C MEDIUM	TEMP °C	DO ppm	5 DAY BOD ppm	CHLORIDES ppm	P. H.	WIND	TIDE
RW01 GG Wilson Bars	(10) 16400 (10) EXLOR	(10) 2500 (25) OG	14	4.6/2.9	2.3	2.7	7.0	CALM 1.5 Calm	0925
JW Creek								"	0950
RW02 TT	(1) 8700 (20) TNTC	(20) 1290 (25) OG	16	6.7/1.6	5.1		6.8	" 0.6	1010
RW03 CJ	(10) 10600 (10) TNTC	(10) 1140 (25) OG	15	7.8/2.2	5.6		7.0	SW 2-4 1.5	1020 1025
RW04 MP	(25) 24	(25) 20	14.5	8.5/5.9	3.0		8.2	SW 3 0.6	1035 1045
RW-05 RL	(25) ∅	(25) 8	14.0	8.3/5.7	2.6		8.2	SW 3 0.2	1055 1115 INCOMING
RW06 CHB	(25) 8	(25) 0	15	7.1/6.7	0.4		8.2		1120 1135 INCOMING
RW07	(25) 0	(25) 12	15	7.9/6.7	1.2		8.2	SE 5 1.5	1145
RW09	(25) 12	(25) 16	16	7.7/7.1	0.6		8.2		1150
RW08 OB	(25) 2	(25) 0	15	8.0/7.2	0.8		8.2		1157
								0.2	1205





