

DATE OF INSPECTION

22 FEB. 1985

TYPE OF INSPECTION

A INTERNAL & EXTERNAL

B INTERNAL & EXTERNAL WITH PRESSURE TEST

C OPERATIONAL

1 FROM BASE MAINT. OFFICER
 CAMP LEJEUNE, N. C.

2 TO NAVFACENGCOM
 NORFOLK, VA

14. CERTIFICATE ISSUED YES NO
 EXPIRES 22 FEB. 1987

15. BOILER INSPECTOR

Thomas L. Lanier
 NAVY OR NATIONAL BOARD NO.

NAVFAC 239

16. REASON FOR NOT ISSUING CERTIFICATE

BOILER DATA

3. MANUFACTURER

CURTIS

4. PROPERTY NO

PU-126

5. MFG. SERIAL NO.

231725

6. MFG. MODEL NO.

N.B. 194376

7. BUILDING NO

M-120

8. YEAR BUILT

1977

9. CAPACITY

11 CU. FT. VOLUME

10. FUEL (Check)

COAL OIL GAS

11. PRESSURE

DESIGNED

200

OPERATING

140

TEST

300

psi

12. FEED WATER TREATMENT

SATISFACTORY

UNSATISFACTORY

13. TYPE

WATER TUBE

FIRE TUBE

C. I.

17. BOILER USE

AIR-RECEIVER

18. COMBUSTION CONTROL (Mfg. Name)

19. COMBUSTION

% CO₂

% EXCESS O₂

20. FLUE GAS TEMPERATURE

AFTER BOILER

°F

: AFTER HEAT TRAP

°F

SAFETY DEVICES

SAFETY VALVES

21. MANUFACTURER

KINGSTON

22. NUMBER AND SIZE

1-3/8"

23. PSI SETTING

200

24. CONDITION

GOOD

STEAM PRESSURE GAUGE

25. MANUFACTURER

ASHCROFT

26. CORRECTIONS

WATER LEG CONSTANT

psi

OTHER

psi

27. REASON IF NOT TESTED

FIRING EQUIPMENT

ITEM	IN SERVICE	ALTERNATE
28. MANUFACTURER		
29. TYPE		
30. FUEL GRADE		

31. INSPECTOR'S COMMENTS

RESET PRESSURE C/O CONTROL @ 140 PSI.

32. ATTACHMENT(S) (Check)

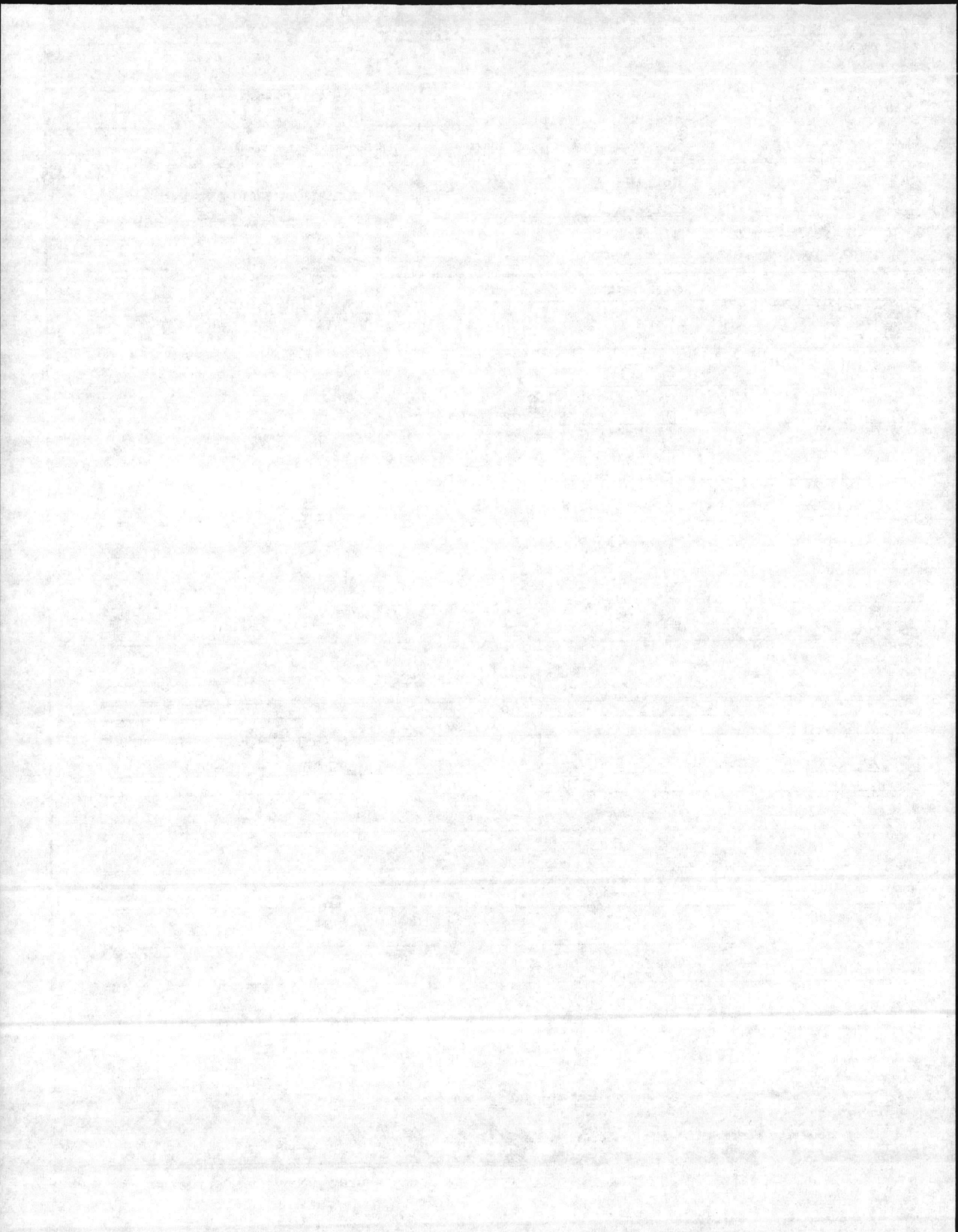
COPY OF INSPECTOR'S REPORT

SPECIAL COMMENTS

33. SIGNATURE

J. F. Sellen

BY DIRECTION



LOCATION	BLDG. NO.	REC. NO.	DATE
	M-120	PV-124	2/22/85

MANUFACTURED BY: **CURTIS**

MFGR. SER. NO. 231725	MFGR. MODEL NO.	NATL. BRD. NO. 194374			
YEAR BLT. 77	DSG. PRESS. 200	OPER. PRESS. 150	MAX. TEMP. 400	TYPE	
CAP. 11 cu. ft.	OVER ALL LGTH.	DIA.	SHELL THK. .152	HEAD THK. .135	WATER GAL. 80

PRESS. GAGE ASHCROFT	PRESS. RANGE 0-300	SIZE 2 1/2"
-----------------------------	---------------------------	--------------------

SV MFGR. KINGSTON	SIZE 3/8	CAP. 118 CFM
--------------------------	-----------------	---------------------

NO. 1	SET 200	OPEN 200	CLOSE 140
NO. 2	SET	OPEN	CLOSE
NO. 3	SET	OPEN	CLOSE

INSPECTION DATE

REMARKS

2/22/85

HYDRO @ 300 PSI - OK

OK

RESET OPER PRESS SET @ 140.

DATE OF INSPECTION

30 Sept. 1982

TYPE OF INSPECTION

A INTERNAL & EXTERNAL

B INTERNAL & EXTERNAL WITH PRESSURE TEST

C OPERATIONAL

1. FROM
**BASE MAINT. OFFICER
 CAMP LEJEUNE, N. C.**

2. TO
**NAVFACENCOM
 NORFOLK, VA**

14. CERTIFICATE ISSUED YES NO
 EXPIRES 30 Sept. 1984

15. BOILER INSPECTOR

Thomas L. Lanier
 NAVY OR NATIONAL BOARD NO.

NAVFAC 239

16. REASON FOR NOT ISSUING CERTIFICATE

BOILER DATA

3. MANUFACTURER

CURTIS

4. PROPERTY NO.

PV-126

5. MFG. SERIAL NO.

231225

6. MFG. MODEL NO.

NB-194376

7. BUILDING NO.

M-120

8. YEAR BUILT

1977

9. CAPACITY

11 CU. FT. VOLUME

10. FUEL (Check)

COAL

OIL

GAS

11. PRESSURE

DESIGNED

200

psi

OPERATING

175

psi

TEST

200 AIR

psi

12. FEED WATER TREATMENT

SATISFACTORY

UNSATISFACTORY

13. TYPE

WATER TUBE

FIRE TUBE

C. I.

17. BOILER USE

AIR RECEIVER

18. COMBUSTION CONTROL (Mfg. Name)

19. COMBUSTION

% CO₂

% EXCESS O₂

20. FLUE GAS TEMPERATURE

AFTER BOILER

°F

AFTER HEAT TRAP

°F

SAFETY DEVICES

SAFETY VALVES

21. MANUFACTURER

KINGSTON

22. NUMBER AND SIZE

1-3/8"

23. PSI SETTING

200

24. CONDITION

GOOD

STEAM PRESSURE GAUGE

25. MANUFACTURER

ASHCROFT

26. CORRECTIONS

WATER LEG CONSTANT

psi

OTHER

psi

27. REASON IF NOT TESTED

FIRING EQUIPMENT

ITEM	IN SERVICE	ALTERNATE
28. MANUFACTURER		
29. TYPE		
30. FUEL GRADE		

31. INSPECTOR'S COMMENTS

START & MAINTAIN PM LOC.

32. ATTACHMENT(S) (Check)

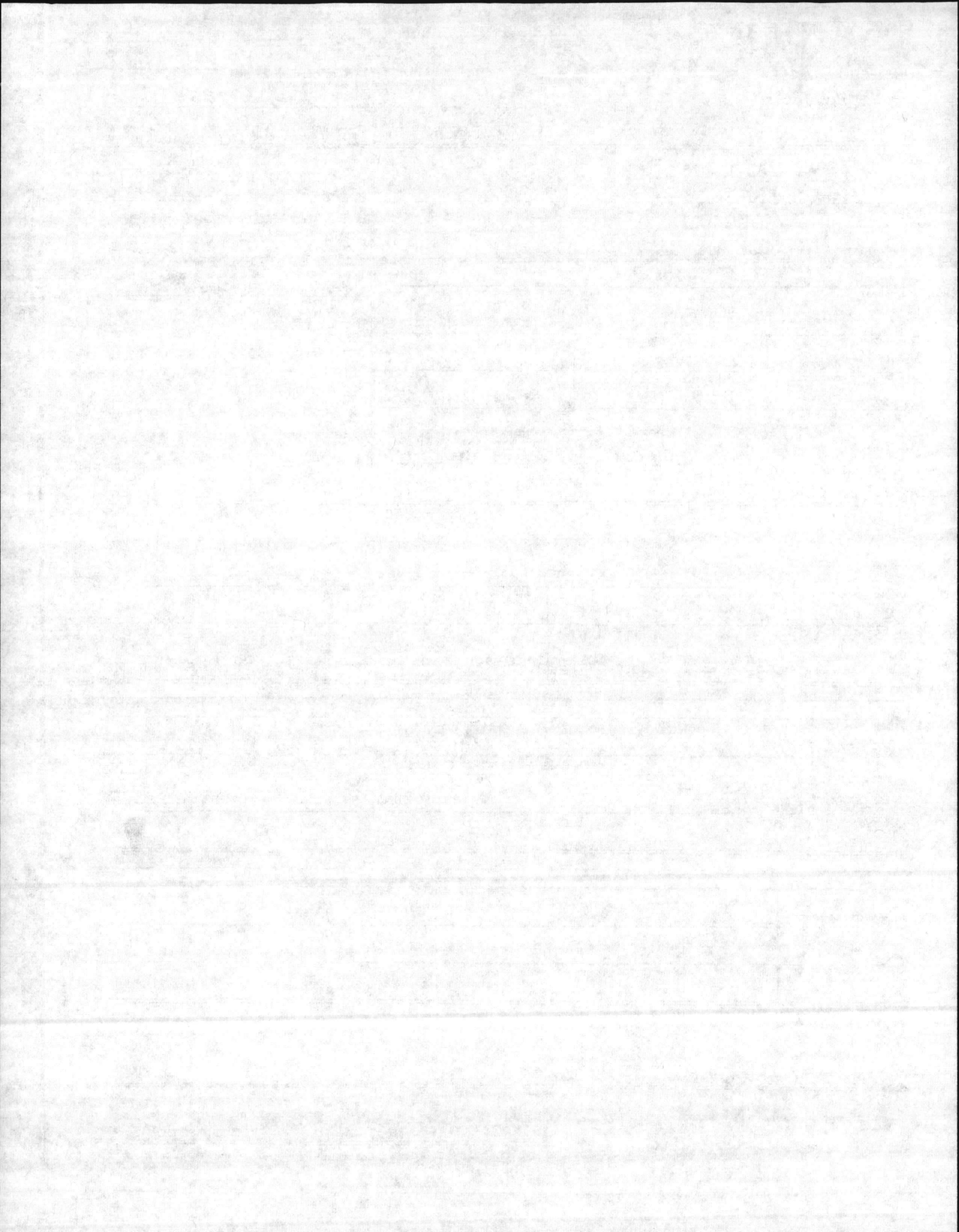
COPY OF INSPECTOR'S REPORT

SPECIAL COMMENTS

33. SIGNATURE

R.M. Green

BY DIRECTION



INSPECTION REPORT-BOILERS
 NAVFAC 9-11014/41 (3/67)
 Supersedes NAVDOCKS 2544
 S/N 0105-LF-004-0000

1. FROM
BASE MAINT. OFFICER
CAMP LEJEUNE, N. C.
 2. TO
NAVFACENGCOM
NORFOLK, VA.

TYPE OF INSPECTION
 A INTERNAL & EXTERNAL

DATE OF INSPECTION
23 AUG 1975

B INTERNAL & EXTERNAL WITH PRESSURE TEST
 C

14. CERTIFICATE ISSUED YES
 EXPIRES **23 AUG 1981**
 15. BOILER INSPECTOR

Jesse L. Sellen
 NAVY OR NATIONAL BOARD NO.
NAVFAC 225

16. REASON FOR NOT ISSUING CERTIFICATE

3. MANUFACTURER
CURTIS
 BOILER DATA

4. PROPERTY NO. PV-126	5. MFG. SERIAL NO. 231725	6. MFG. MODEL NO. NB-194376
7. BUILDING NO. M-120	8. YEAR BUILT 1977	9. CAPACITY 11 CU. FT. VOLUME
10. FUEL (Check) <input type="checkbox"/> COAL <input type="checkbox"/> OIL <input type="checkbox"/> GAS	11. PRESSURE DESIGNED 200 psi	OPERATING 175 psi TEST 200 psi
12. FEED WATER TREATMENT <input type="checkbox"/> SATISFACTORY <input type="checkbox"/> UNSATISFACTORY	13. TYPE <input type="checkbox"/> WATER TUBE <input type="checkbox"/> FIRE TUBE <input type="checkbox"/> C. I.	

17. BOILER USE
AIR RECEIVER
 19. COMBUSTION

18. COMBUSTION CONTROL (Mfg. Name)
 20. FLUE GAS TEMPERATURE
 AFTER BOILER °F : AFTER HEAT TRAP °F

21. MANUFACTURER
KINGSTON

SAFETY DEVICES
 SAFETY VALVES

25. MANUFACTURER
ASHCROFT
 27. REASON IF NOT TESTED

22. NUMBER AND SIZE
1-3/8"
 23. PSI SETTING
200
 24. CONDITION
GOOD

ITEM	IN SERVICE	FIRING EQUIPMENT	ALTERNATE
28. MANUFACTURER			
29. TYPE			
30. FUEL GRADE			
26. CORRECTIONS WATER LEG CONSTANT _____ psi; OTHER _____ psi			

INSPECTOR'S COMMENTS

part of maintain PM LOG-
 ATTACHMENT(S) (Check)
 COPY OF INSPECTOR'S REPORT

SPECIAL COMMENTS

33. SIGNATURE
R.M. Sellen

BOILER INSPECTION CHECK LIST

LOCATION		BLDG NO.	BOILER NO.	DATE	
MCRCL (MT SCH)		400	M-120	PV-126	23 AUG 81
BOILER MFG. CURTIS		OPERATING PRESS. 175	DESIGN PRESS. 200	CAP. 11 CFU	
SERIAL NO. 231725		MODEL NO.	N.B. NO. 194376		
BURNER MFG.		FIRING RATE:			
STEAM GAGE NAME: ASHOFF		PRESS. 0-300	TEST		
SV MFG. KINGSTON	CAP. 118 CFM	NO. 1	SIZE 3/8		
NO. 1	SET 200	OPEN 215	CLOSE 60		
NO. 2	SET	OPEN	CLOSE		
NO. 3	SET	OPEN	CLOSE		
CO2%	02%	STACK TEMP	COMB. EFF.	PURGE TIME	
NO. 1 FIREYE	C/O	A/L			
NO. 2 FIREYE	C/O	A/L			
HI-STEAM TEMP.	C/O	A/L			
EXCESS STEAM TEMP.	C/O	A/L			
HI OIL TEMP.	C/O	A/L			
HI OIL PRESS.	C/O	A/L			
LO OIL TEMP.	C/O	A/L			
LO OIL PRESS.	C/O	A/L			
LO ATOM AIR/STEAM	C/O	A/L			
NO. 1 LW	C/O	A/L			
NO. 2 LW	C/O	A/L			
LO FURNACE DRAFT	C/O	A/L			
LO FIRE START	C/O	A/L			
TYPE OF FUEL	YEAR BUILT 1977	A/L			
HEAT SURFACE	Boiler	WATER WALL			

EXH. 23 AUG 81

(Paint on Comp - looks as if Run Hot)

(Should Have done drain)

SH - 152
HD. 135

PA # 211606
20" X 66"

REMARKS:

