

INSPECTION REPORT-BOILERS
 NAVFAC 9-11014/41 (3/67)
 Supersedes NAVDOCKS 2544
 S/N 0105-LF-004-0000

DATE OF INSPECTION
 24 Nov. 1986

TYPE OF INSPECTION
 A INTERNAL & EXTERNAL B INTERNAL & EXTERNAL WITH PRESSURE TEST C OPERATIONAL

1. FROM
 BASE MAINT. OFFICER
 CAMP LEJEUNE, N. C.

2. TO
 NAVFACENCOM
 NORFOLK, VA

14. CERTIFICATE ISSUED YES NO
 EXPIRES 24 NOV. 1989

15. BOILER INSPECTOR
 Thomas L. Lavin
 NAVY OR NATIONAL BOARD NO.
 NAVFAC 239

3. MANUFACTURER
 WORTHINGTON, WOOD IND.

4. PROPERTY NO. PU-91
 5. MFG. SERIAL NO. 5778
 6. MFG. MODEL NO. NB. 662078

7. BUILDING NO. AS 4146
 8. YEAR BUILT 1976
 9. CAPACITY 17 cu. FT. VOL.

10. FUEL (Check)
 COAL OIL GAS

11. PRESSURE
 DESIGNED 200 psi
 OPERATING 125 psi
 TEST 200 AIR psi

12. FEED WATER TREATMENT
 SATISFACTORY UNSATISFACTORY

13. TYPE
 WATER TUBE FIRE TUBE C. I.

16. REASON FOR NOT ISSUING CERTIFICATE

NAVFAC COPY

17. BOILER USE
 AIR-RECEIVER

18. COMBUSTION CONTROL (Mfg. Name)

19. COMBUSTION
 % CO₂ _____ % EXCESS O₂ _____

20. FLUE GAS TEMPERATURE
 AFTER BOILER _____ °F : AFTER HEAT TRAP _____ °F

SAFETY DEVICES
SAFETY VALVES

21. MANUFACTURER
 KINGSTON

22. NUMBER AND SIZE
 1-3/8"

23. PSI SETTING
 200

24. CONDITION
 SAT.

STEAM PRESSURE GAUGE

25. MANUFACTURER
 U.S. GAGE

26. CORRECTIONS
 WATER LEG CONSTANT _____ psi; OTHER _____ psi

27. REASON IF NOT TESTED

FIRING EQUIPMENT

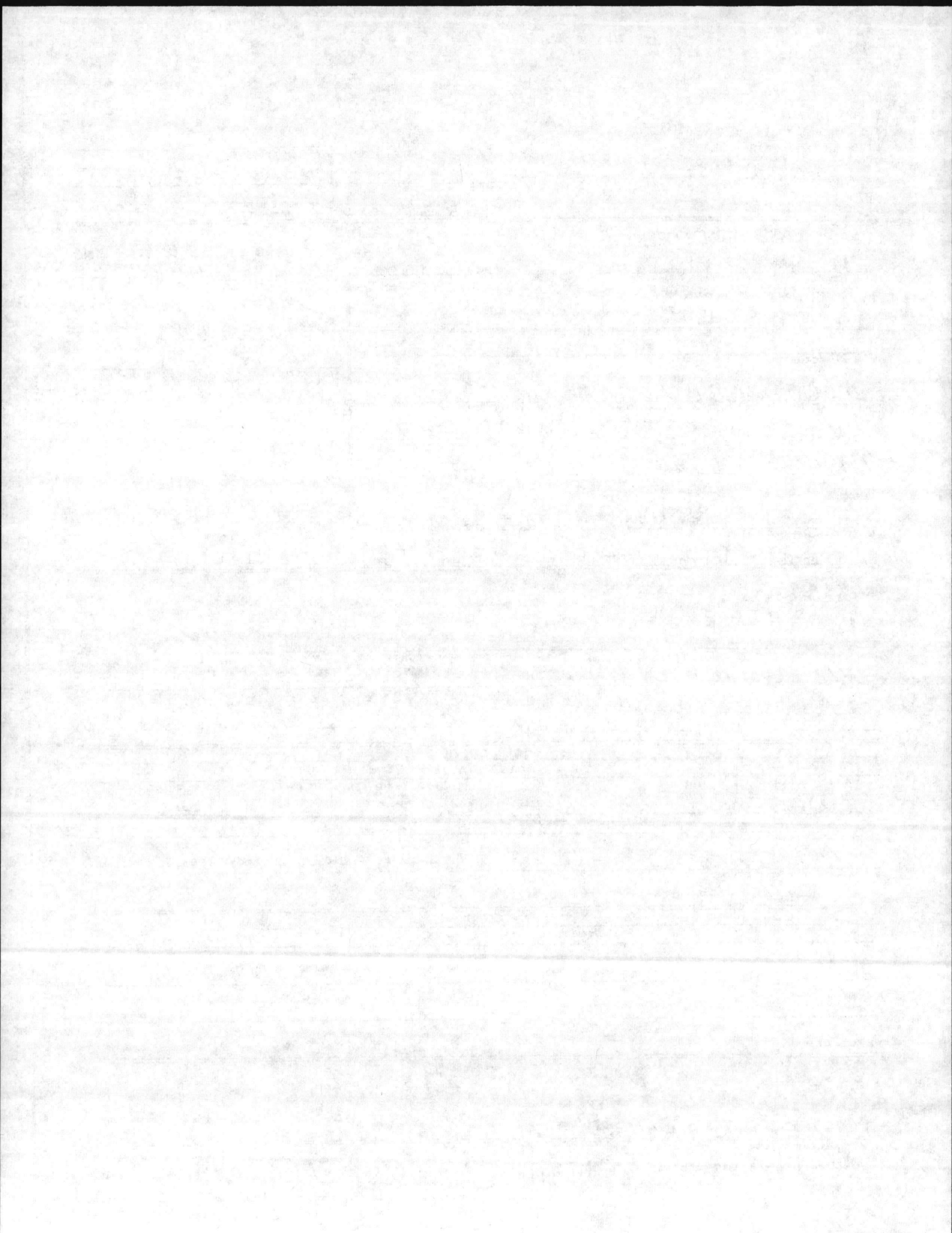
ITEM	IN SERVICE	ALTERNATE
28. MANUFACTURER		
29. TYPE		
30. FUEL GRADE		

31. INSPECTOR'S COMMENTS

START AND MAINTAIN P.M. LOG

32. ATTACHMENT(S) (Check)
 COPY OF INSPECTOR'S REPORT SPECIAL COMMENTS

33. SIGNATURE
 Timothy Jewell 12/18/86
 BY DIRECTION 8



LOCATION	BLDG. NO.	REC. NO.	DATE
	AS-4146	PU. 91	24 NOV 84

MANUFACTURED BY: WORTHINGTON (WOOD IND PROD CO.)

MFG. SER. NO. EU 5778 MFG. MODEL NO. NATL. BRD. NO. 662078

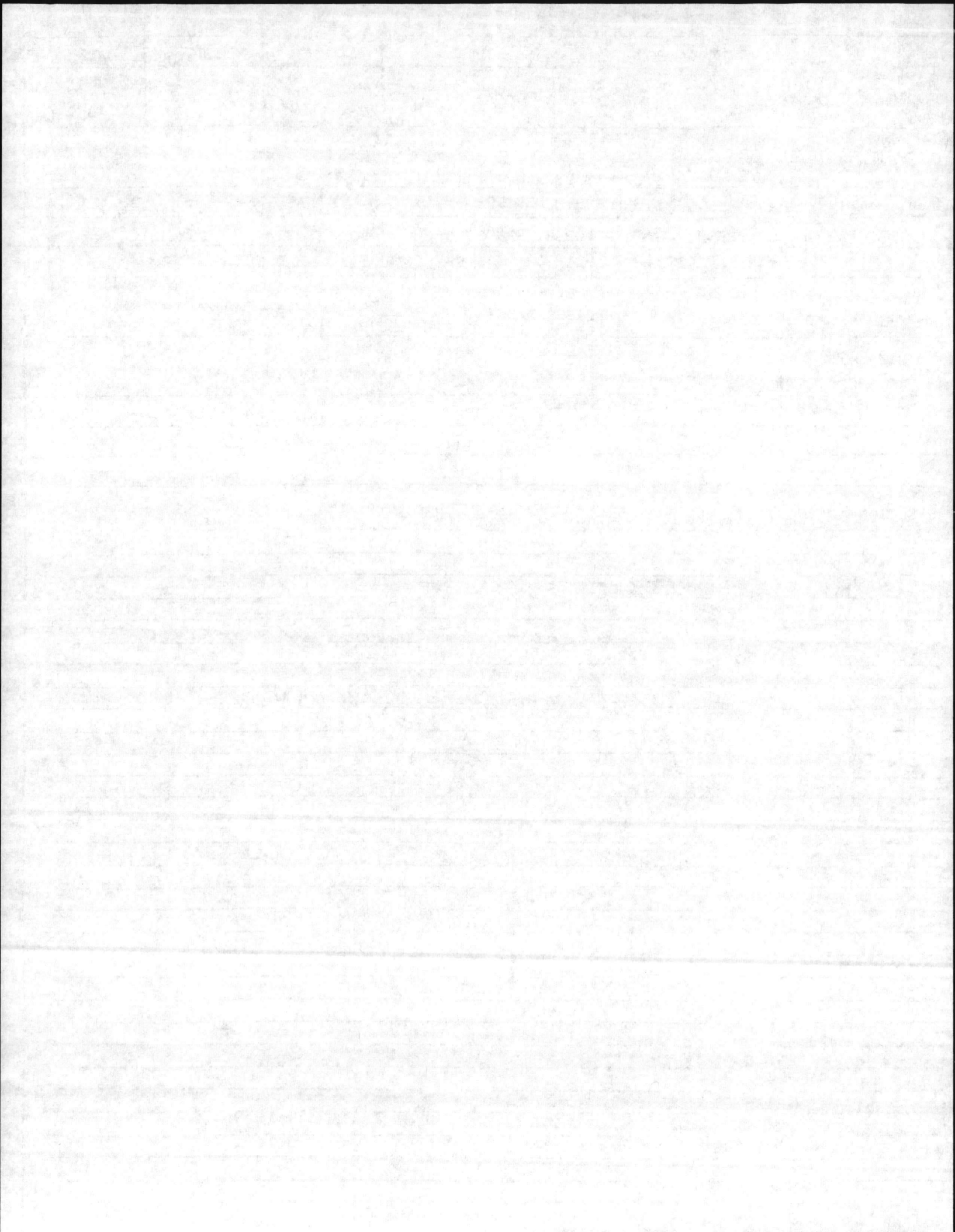
EAR. BLT. 76 DSG. PRESS. 200 OPER. PRESS. MAX. TEMP. TYPE
 CAP. OVER ALL LGTH. DIA. SHELL THK. HEAD THK. WATER GAL.

PRESS. GAGE US GAGE ASHCROFT PRESS. RANGE 0-300 SIZE 2 1/2 2"

BY MFG. KINGSTON SIZE 1/4 CAP. 118

NO. 1	SET 200	OPEN 200	CLOSE
NO. 2	SET	OPEN	CLOSE
NO. 3	SET	OPEN	CLOSE

INSPECTION DATE	REMARKS
24 NOV. 84	TESTED S/U - SAT
	INSTALLED NEW PRESS GAGE - US GAGE - 0-300
	START & MAINTAIN P.M. LOG.
	CHANGE CONTROL CIRCUIT TO 120 V. (NOW IS 277 V.)
	ISSUED CERT EXPIRE 24 NOV. 90



INSPECTION REPORT-BOILERS
 NAVFAC 9-11014/41 (3/87)
 Supersedes NAVDOCKS 2544
 S/N 0105-LF-004-0000

DATE OF INSPECTION
6 JUNE 1983

TYPE OF INSPECTION
 A INTERNAL & EXTERNAL
 B INTERNAL & EXTERNAL WITH PRESSURE TEST
 C OPERATIONAL

1. FROM **BASE MAINT. OFFICER
 CAMP LEJUNE, N. C.**
 2. TO **NAVFACENGCOM
 NORFOLK, VA.**

14. CERTIFICATE ISSUED YES NO
EXPIRES 6 JUNE 1985
 15. BOILER INSPECTOR
Thomas L. Lanier
 NAVY OR NATIONAL BOARD NO.

BOILER DATA

3. MANUFACTURER
WOOD IND. PROD. CO
 4. PROPERTY NO. **PV-91** 5. MFG. SERIAL NO. 6. MFG. MODEL NO. **NB 662078**
 7. BUILDING NO. **AS-4146** 8. YEAR BUILT **1976** 9. CAPACITY **17 CU.FT.**
 10. FUEL (Check)
 COAL OIL GAS
 11. PRESSURE
 DESIGNED **200** psi OPERATING **125** psi TEST **300** psi
 12. FEED WATER TREATMENT
 SATISFACTORY UNSATISFACTORY
 13. TYPE
 WATER TUBE FIRE TUBE C. I.

NAUFAC 239
 16. REASON FOR NOT ISSUING CERTIFICATE

17. BOILER USE
AIR-RECEIVER
 19. COMBUSTION
 _____ % CO₂ _____ % EXCESS O₂

18. COMBUSTION CONTROL (Mfg. Name)
 20. FLUE GAS TEMPERATURE
 AFTER BOILER _____ °F ; AFTER HEAT TRAP _____ °F

**SAFETY DEVICES
 SAFETY VALVES**

21. MANUFACTURER **KINGSTON** 22. NUMBER AND SIZE **1 - 3/8"** 23. PSI SETTING **200** 24. CONDITION **GOOD**

STEAM PRESSURE GAUGE

25. MANUFACTURER **HASHCROFT** 26. CORRECTIONS
 WATER LEG CONSTANT _____ psi; OTHER _____ psi
 27. REASON IF NOT TESTED

FIRING EQUIPMENT

ITEM	IN SERVICE	ALTERNATE
28. MANUFACTURER		
29. TYPE		
30. FUEL GRADE		

31. INSPECTOR'S COMMENTS
OK

32. ATTACHMENT(S) (Check)
 COPY OF INSPECTOR'S REPORT SPECIAL COMMENTS
 33. SIGNATURE *R.M. Oiler* BY DIRECTION

BOILER INSPECTION CHECK LIST

LOCATION	BLDG NO.	BOILER NO.	DATE
MCMAS	MS-4146	PV-91	6 JUN 83

BOILER MFG. WOOD IND PROD CO.	OPERATING PRESS. 125	DESIGN PRESS 200	CAP. CFV
SERIAL NO.	MODEL NO.	N.B. NO.	662078

BURNER MFG.	FIRING RATE:
STEAM GAGE NAME: ASHCROFT	PRESS. 0-300 TEST 300
SV MFG FC. KINGSTON	CAP-CFM 118 NO. 1 SIZE 3/8

NO. 1	SET 200	OPEN 200	CLOSE
NO. 2	SET	OPEN	CLOSE
NO. 3	SET	OPEN	CLOSE

CO2%	02%	STACK TEMP	COMB. EFF.	PURGE TIME
------	-----	------------	------------	------------

NO. 1 FIREYE	C/O	A/L
NO. 2 FIREYE	C/O	A/L
HI-STEAM TEMP.	C/O	A/L
EXCESS STEAM TEMP.	C/O	A/L
HI OIL TEMP.	C/O	A/L
HI OIL PRESS.	C/O	A/L
LO OIL TEMP.	C/O	A/L
LO OIL PRESS.	C/O	A/L
LO ATOM AIR/STEAM	C/O	A/L
NO. 1 LW	C/O	A/L
NO. 2 LW	C/O	A/L
LO FURNACE DRAFT	C/O	A/L
LO FIRE START	C/O	A/L

HYDRO-OK
 S/U-OK

TYPE OF FUEL	YEAR BUILT 1976	A/L
HEAT SURFACE Boiler	WATER WALL	

REMARKS:

200 PSI @ 650°F
SIZE 24 X 64
 $12 \times 12 \times 3.142 \times 66 \times .00058 = 17.32 \text{ cu ft}$

