

DATE OF INSPECTION  
 10 SEPT. 1986

TYPE OF INSPECTION  
 A  INTERNAL & EXTERNAL B  INTERNAL & EXTERNAL WITH PRESSURE TEST C  OPERATIONAL

1. FROM  
 COMMANDING GENERAL  
 MCB, CAMP LEJEUNE, NC

2. TO  
 NAVFACENGCOM  
 NORFOLK, VA

14. CERTIFICATE ISSUED  YES  NO  
 EXPIRES 10 SEPT. 1988  
 15. BOILER INSPECTOR  
 Thomas L. Lenoir  
 NAVY OR NATIONAL BOARD NO.  
 NAVFAC 239  
 16. REASON FOR NOT ISSUING CERTIFICATE

BOILER DATA

3. MANUFACTURER  
 CURTIS

4. PROPERTY NO. PU-163	5. MFG. SERIAL NO. 206584	6. MFG. MODEL NO. 170335 N.B.
7. BUILDING NO. G-480	8. YEAR BUILT 1973	9. CAPACITY 18 cu. ft. VOL.

10. FUEL (Check)  
 COAL  OIL  GAS

11. PRESSURE  
 DESIGNED 200 psi OPERATING 125 psi TEST 200 AIR psi

12. FEED WATER TREATMENT  
 SATISFACTORY  UNSATISFACTORY

13. TYPE  
 WATER TUBE  FIRE TUBE  C. I.

17. BOILER USE  
 AIR-RECEIVER

18. COMBUSTION CONTROL (Mfg. Name)

19. COMBUSTION  
 % CO<sub>2</sub> \_\_\_\_\_ % EXCESS O<sub>2</sub> \_\_\_\_\_

20. FLUE GAS TEMPERATURE  
 AFTER BOILER \_\_\_\_\_ °F : AFTER HEAT TRAP \_\_\_\_\_ °F

SAFETY DEVICES

SAFETY VALVES

21. MANUFACTURER  
 KINGSTON

22. NUMBER AND SIZE 1 - 3/8"	23. PSI SETTING 200	24. CONDITION SAT.
---------------------------------	------------------------	-----------------------

25. MANUFACTURER  
 ASHCROFT

26. CORRECTIONS  
 WATER LEG CONSTANT \_\_\_\_\_ psi; OTHER \_\_\_\_\_ psi

27. REASON IF NOT TESTED

FIRING EQUIPMENT

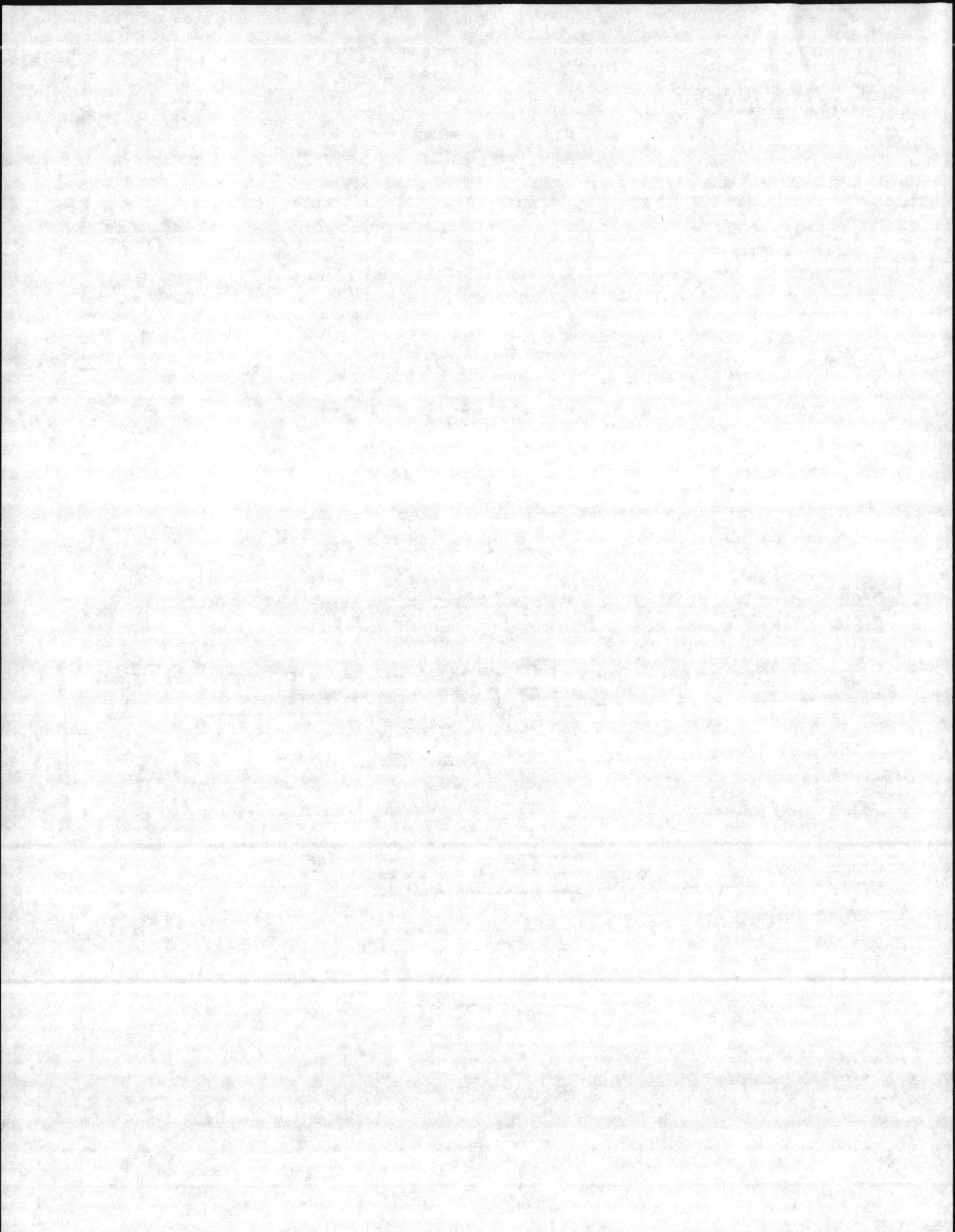
ITEM	IN SERVICE	ALTERNATE
28. MANUFACTURER		
29. TYPE		
30. FUEL GRADE		

31. INSPECTOR'S COMMENTS

REPAIR AUTOMATIC DRAIN VALVE.

32. ATTACHMENT(S) (Check)  
 COPY OF INSPECTOR'S REPORT  SPECIAL COMMENTS

33. SIGNATURE  
 Curt Powell  
 BY DIRECTION



LOCATION

BLDG. NO.

REC. NO.

DATE

G 480

PV-163

10 SEPT. 84

MANUFACTURED BY:

CURTIS

MFGR. SER. NO.

206584

MFGR. MODEL NO.

NATL. BRD. NO.

170.335

YEAR. BLT.

73

DSG. PRESS.

200

OPER. PRESS.

100

MAX. TEMP.

400

TYPE

CAP.

OVER ALL LGTH.

DIA.

SHELL THK. 228

HEAD THK. 199

WATER GAL. 120

PRESS. GAGE

ASHCROFT

PRESS. RANGE

0-300

SIZE

2 1/2"

SV MFGR.

KINGSTON

SIZE

3/8"

CAP.

118 CFM

NO. 1

SET

200

OPEN

195

CLOSE

NO. 2

SET

OPEN

CLOSE

NO. 3

SET

OPEN

CLOSE

INSPECTION DATE

REMARKS

10 SEPT. 84

INSTALLED DRAIN VALVE 3/8"

ISSUED CERT TO EXPIRE 10 SEPT. 88

RPL PRESS CUT OUT / CUT IN SWITCH.

CATALOG # 69HAI MFG- ~~FURNAS~~ FURNAS

MIN-40 MAX 250 PSI 3/8 PIPE FITTING.

SEND TICKET TO SHOP 72 RPR AUTO DRAIN VALVE  
ALSO CHECK V-BELTS



DATE OF INSPECTION  
 13 JUNE 1983

TYPE OF INSPECTION  
 A  INTERNAL & EXTERNAL B  INTERNAL & EXTERNAL WITH PRESSURE TEST C  OPERATIONAL

1. FROM **BASE MAINT. OFFICER  
 CAMP LEJEUNE, N. C.**  
 2. TO **NAVFACENGCOM  
 NORFOLK, VA.**

14. CERTIFICATE ISSUED  YES  NO  
 EXPIRES 13 JUNE 1985  
 15. BOILER INSPECTOR

*Thomas L. Lanier*  
 NAVY OR NATIONAL BOARD NO.

**NAVFAC 239**  
 16. REASON FOR NOT ISSUING CERTIFICATE

BOILER DATA

3. MANUFACTURER  
**CURTIS**

4. PROPERTY NO. <b>PV-163</b>	5. MFG. SERIAL NO. <b>206584</b>	6. MFG. MODEL NO. <b>NB</b> <b>170335</b>
7. BUILDING NO. <b>G 480</b>	8. YEAR BUILT <b>1973</b>	9. CAPACITY <b>18 CU. FT. VOL</b>

10. FUEL (Check)  
 COAL  OIL  GAS

11. PRESSURE  
 DESIGNED **200** psi OPERATING **125** psi TEST **300** psi

12. FEED WATER TREATMENT  
 SATISFACTORY  UNSATISFACTORY

13. TYPE  
 WATER TUBE  FIRE TUBE  C. I.

17. BOILER USE  
**AIR-RECEIVER**  
 19. COMBUSTION  
 \_\_\_\_\_ % CO<sub>2</sub> \_\_\_\_\_ % EXCESS O<sub>2</sub>

18. COMBUSTION CONTROL (Mfg. Name)  
 20. FLUE GAS TEMPERATURE  
 AFTER BOILER \_\_\_\_\_ °F : AFTER HEAT TRAP \_\_\_\_\_ °F

SAFETY DEVICES  
 SAFETY VALVES

21. MANUFACTURER <b>KINGSTON</b>	22. NUMBER AND SIZE <b>1 3/8"</b>	23. PSI SETTING <b>200</b>	24. CONDITION <b>GOOD</b>
-------------------------------------	--------------------------------------	-------------------------------	------------------------------

25. MANUFACTURER  
**ASH CROFT**

26. CORRECTIONS  
 WATER LEG CONSTANT \_\_\_\_\_ psi; OTHER \_\_\_\_\_ psi

27. REASON IF NOT TESTED

FIRING EQUIPMENT

ITEM	IN SERVICE	ALTERNATE
28. MANUFACTURER		
29. TYPE		
30. FUEL GRADE		

31. INSPECTOR'S COMMENTS  
**CLEAN AIR-COMP. & RECEIVER TANK**  
**START & MAINTAIN P.M. LOG-**

32. ATTACHMENT(S) (Check)  
 COPY OF INSPECTOR'S REPORT  SPECIAL COMMENTS

33. SIGNATURE  
*R.M. Killen*  
 BY DIRECTION



BOILER INSPECTION CHECK LIST

LOCATION	BLDG NO.	BOILER NO.	DATE
MCB GEIGOR ARMORY	G-480	PV-163	13 JUNE 83

BOILER MFG. <b>CURTIS</b>	OPERATING PRESS. <b>125</b>	DESIGN PRESS. <b>200</b>	CAP. CFV <b>18.8</b>
SERIAL NO. <b>206584</b>	MODEL NO.	N.B. NO. <b>170335</b>	

BURNER MFG.	FIRING RATE:
STEM GAGE NAME: <b>ASHCROFT</b>	PRESS. <b>0-300</b> TEST <b>300</b>
SV MFG. <b>KINGSTON</b>	CAP. CFM <b>118</b> NO. <b>1</b> SIZE <b>3/8</b>

NO. 1	SET <b>200</b>	OPEN <b>200</b>	CLOSE
NO. 2	SET	OPEN	CLOSE
NO. 3	SET	OPEN	CLOSE

CO2%	02%	STACK TEMP	COMB. EFF.	PURGE TIME
------	-----	------------	------------	------------

NO. 1 FIREYE	C/O	A/L
NO. 2 FIREYE	C/O	A/L
HI-STEAM TEMP.	C/O	A/L
EXCESS STEAM TEMP.	C/O	A/L
HI OIL TEMP.	C/O	A/L
HI OIL PRESS.	C/O	A/L
LO OIL TEMP.	C/O	A/L
LO OIL PRESS.	C/O	A/L
LO ATOM AIR/STEAM	C/O	A/L
NO. 1 LW	C/O	A/L
NO. 2 LW	C/O	A/L
LO FURNACE DRAFT	C/O	A/L
LO FIRE START	C/O	A/L

HYDRO-300-OK  
 SV-200-OK  
 CERT ISSUED

TYPE OF FUEL	YEAR BUILT <b>1973</b>	A/L
HEAT SURFACE	Boiler	WATER WALL

REMARKS:

SIZE 30" X 46"

① CLEAN OUT AUTOMATIC DRAIN VALVE

② CLEAN UP COMP. & TANK CHECK FOR OIL LEAK

