

DATE OF INSPECTION
 10 MAY 1983

TYPE OF INSPECTION
 A INTERNAL & EXTERNAL B INTERNAL & EXTERNAL WITH PRESSURE TEST C OPERATIONAL

1. FROM **BASE MAINT. OFFICER
 CAMP LEJEUNE, N. C.**
 2. TO **NAVFACENCOM
 NORFOLK, VA**

14. CERTIFICATE ISSUED YES NO
 EXPIRES 10 MAY 1985
 15. BOILER INSPECTOR

Thomas L. Lanier
 NAVY OR NATIONAL BOARD NO.

NAVFAC 239
 16. REASON FOR NOT ISSUING CERTIFICATE

BOILER DATA

3. MANUFACTURER
INGERSOLL RAND

4. PROPERTY NO. PV-57	5. MFG. SERIAL NO. NB No. 27782	6. MFG. MODEL NO. 258 D5
7. BUILDING NO. AS 118	8. YEAR BUILT 1955	9. CAPACITY 12 CU. FT. VOL.

10. FUEL (Check)
 COAL OIL GAS

11. PRESSURE
 DESIGNED **200** psi OPERATING **150** psi TEST **300** psi

12. FEED WATER TREATMENT
 SATISFACTORY UNSATISFACTORY

13. TYPE
 WATER TUBE FIRE TUBE C. I.

17. BOILER USE
AIR-RECEIVER
 19. COMBUSTION
 _____ % CO₂ _____ % EXCESS O₂

18. COMBUSTION CONTROL (Mfg. Name)
 20. FLUE GAS TEMPERATURE
 AFTER BOILER _____ °F : AFTER HEAT TRAP _____ °F

**SAFETY DEVICES
 SAFETY VALVES**

21. MANUFACTURER
ASME STD

22. NUMBER AND SIZE 1-1/4"	23. PSI SETTING 200	24. CONDITION GOOD
--------------------------------------	-------------------------------	------------------------------

STEAM PRESSURE GAUGE

25. MANUFACTURER
US GAGE

26. CORRECTIONS
 WATER LEG CONSTANT _____ psi; OTHER _____ psi

27. REASON IF NOT TESTED

FIRING EQUIPMENT

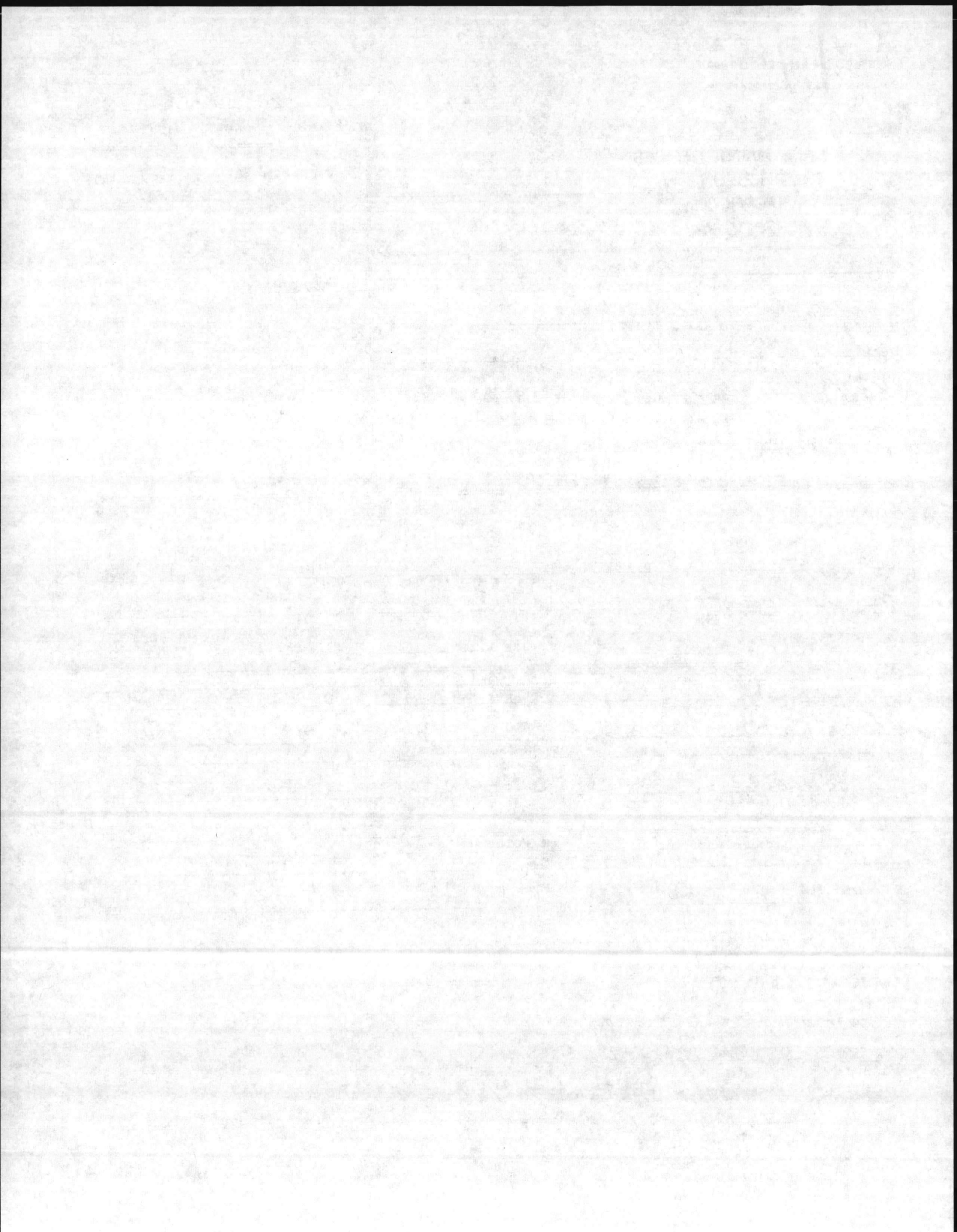
ITEM	IN SERVICE	ALTERNATE
28. MANUFACTURER		
29. TYPE		
30. FUEL GRADE		

31. INSPECTOR'S COMMENTS

**START & MAINTAIN P M LOG
 INSTALLED NEW PRESS. GAGE 0-300 PSI**

32. ATTACHMENT(S) (Check)
 COPY OF INSPECTOR'S REPORT SPECIAL COMMENTS

33. SIGNATURE
R.M. Dillon
 BY DIRECTION



BOILER INSPECTION CHECK LIST

LOCATION		BLDG NO.	BOILER NO.	DATE
MCAS		AS 118	PV 57	10 MAY 83
COMP. BOILER MFG. INGERSOLL RAND		OPERATING PRESS. 150	DESIGN PRESS. 200	CAP. CFV 12
SERIAL NO.	MODEL NO. 258 D 5	N.B. NO. 27782		
BURNER MFG.		FIRING RATE:		
STEAM GAGE NAME: LINCOLN USG (NEW)		PRESS. 0-300	TEST 300	
SV MFG ASME STD.	CAP-CFM 62	NO. 1	SIZE 1/4	
NO. 1	SET 1/4" 200	OPEN 198	CLOSE 165	
NO. 2	SET	OPEN	CLOSE	
NO. 3	SET	OPEN	CLOSE	
CO2%	02%	STACK TEMP	COMB. EFF.	PURGE TIME
NO. 1 FIREYE	C/O		A/L	
NO. 2 FIREYE	C/O		A/L	
HI-STEAM TEMP.	C/O	HYDRO - 300 - OK	A/L	
EXCESS STEAM TEMP.	C/O	SIV LIFT - 198 - OK	A/L	
HI OIL TEMP.	C/O		A/L	
HI OIL PRESS.	C/O		A/L	
LO OIL TEMP.	C/O		A/L	
LO OIL PRESS.	C/O		A/L	
LO ATOM AIR/STEAM	C/O		A/L	
NO. 1 LW	C/O		A/L	
NO. 2 LW	C/O		A/L	
LO FURNACE DRAFT	C/O		A/L	
LO FIRE START	C/O		A/L	
TYPE OF FUEL	YEAR BUILT 1955		A/L	
HEAT SURFACE	Boiler	WATER WALL		

REMARKS:

MWP. 200 @ 250 °F

J. B. BEAIRD COMPANY - MFG.

INSTALLED NEW PRESS. GAGE.

