

INSPECTION REPORT-BOILERS
 NAVFAC 9-11014/41 (3/67)
 Supersedes NAVDOCKS 2544
 S/N 0105-LF-004-0000

DATE OF INSPECTION
18 FEB. 1984

TYPE OF INSPECTION
 A INTERNAL & EXTERNAL
 B INTERNAL & EXTERNAL WITH PRESSURE TEST
 C OPERATIONAL

1. FROM
**COMMANDING GENERAL
 MCB, CAMP LEJEUNE, NC**

2. TO
**NAVFACENGCOM
 NORFOLK, VA**

14. CERTIFICATE ISSUED YES NO
EXPIRES 18 FEB. 1989

15. BOILER INSPECTOR
Thomas L. Lonsen
 NAVY OR NATIONAL BOARD NO.
NAVFAC 239

16. REASON FOR NOT ISSUING CERTIFICATE

BOILER DATA

3. MANUFACTURER
CURTIS

4. PROPERTY NO. **PU-53** 5. MFG. SERIAL NO. **169126** 6. MFG. MODEL NO. **NB 132877**

7. BUILDING NO. **11607** 8. YEAR BUILT **1969** 9. CAPACITY **11 CU. FT. UOL.**

10. FUEL (Check)
 COAL OIL GAS

11. PRESSURE
 DESIGNED **200** psi OPERATING **145** psi TEST **300** psi

12. FEED WATER TREATMENT
 SATISFACTORY UNSATISFACTORY

13. TYPE
 WATER TUBE FIRE TUBE C. I.

17. BOILER USE
AIR-RECEIVER

19. COMBUSTION
 _____ % CO₂ _____ % EXCESS O₂

18. COMBUSTION CONTROL (Mfg. Name)

20. FLUE GAS TEMPERATURE
 AFTER BOILER _____ °F ; AFTER HEAT TRAP _____ °F

SAFETY DEVICES

21. MANUFACTURER
KINGSTON

22. NUMBER AND SIZE **1-3/8"** 23. PSI SETTING **200** 24. CONDITION **GOOD**

25. MANUFACTURER
U.S. GAGE

26. CORRECTIONS
 WATER LEG CONSTANT _____ psi; OTHER _____ psi

27. REASON IF NOT TESTED

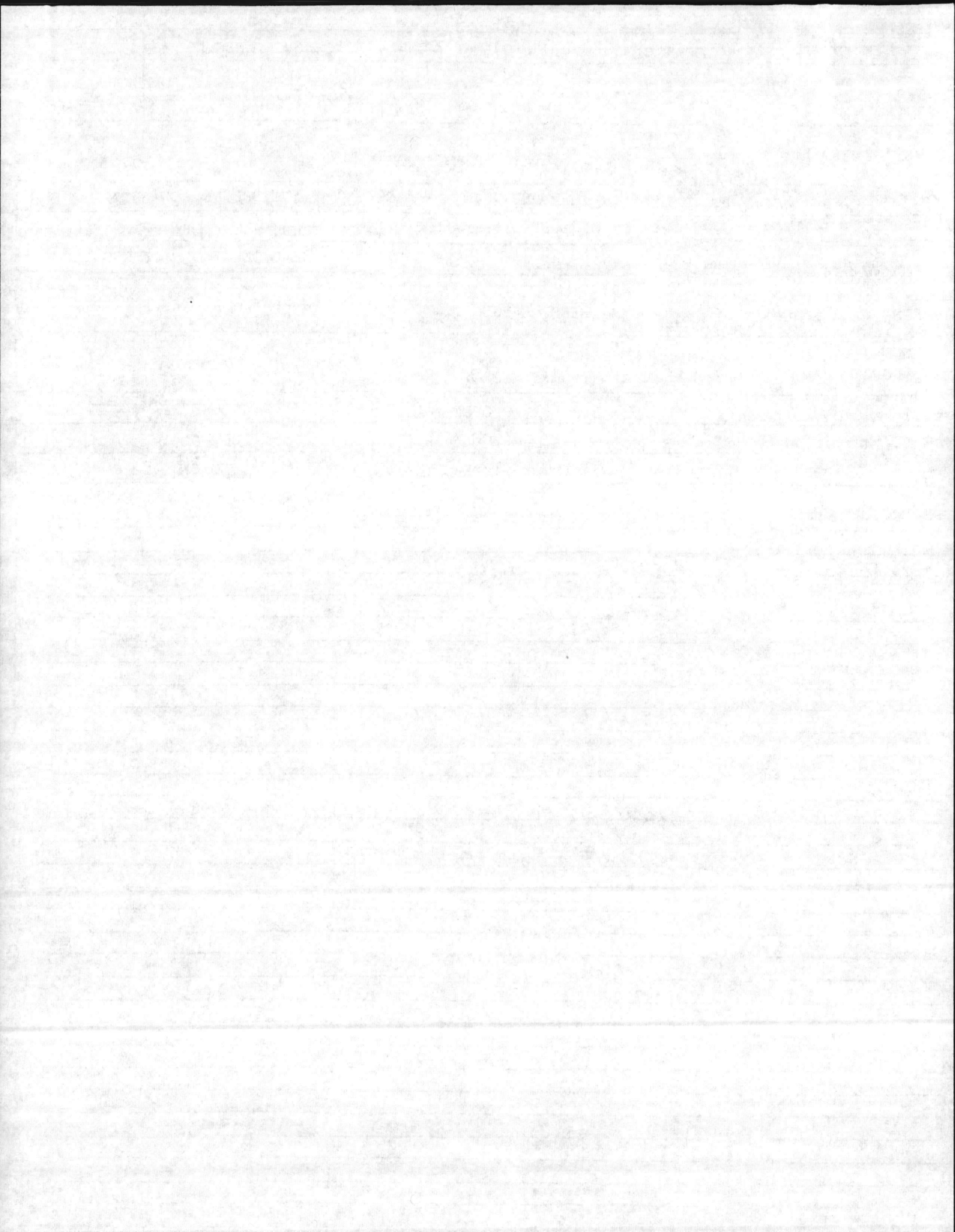
FIRING EQUIPMENT

ITEM	IN SERVICE	ALTERNATE
28. MANUFACTURER		
29. TYPE		
30. FUEL GRADE		
31. INSPECTOR'S COMMENTS		

START & MOUNTAIN P.M. LOG

32. ATTACHMENT(S) (Check)
 COPY OF INSPECTOR'S REPORT SPECIAL COMMENTS

33. SIGNATURE
W.M. P...
 BY DIRECTION



INSPECTION REPORT-BOILERS
 NAVFAC 9-11014/41 (3/67)
 Supersedes NAVDOCKS 2544
 S/N 0105-LF-004-0000

DATE OF INSPECTION
 14 AUG 1979

TYPE OF INSPECTION
 A INTERNAL & EXTERNAL B INTERNAL & EXTERNAL WITH PRESSURE TEST C OPERATIONAL

1. FROM BASE MAINT. OFFICER
 CAMP LEJEUNE, N. C.
 2. TO NAVFACENCOM
 NORFOLK, VA

14. CERTIFICATE ISSUED YES NO
 EXPIRES 14 AUG 1981
 15. BOILER INSPECTOR
 Jesse L. Sellen
 NAVY OR NATIONAL BOARD NO.
 NAVFAC 225
 16. REASON FOR NOT ISSUING CERTIFICATE

BOILER DATA

3. MANUFACTURER
 CURTIS
 4. PROPERTY NO. PU 53
 5. MFG. SERIAL NO. 169126
 6. MFG. MODEL NO. NB-132877
 7. BUILDING NO. 1607
 8. YEAR BUILT 1969
 9. CAPACITY 11 CU. FT. VOLUME
 10. FUEL (Check)
 COAL OIL GAS
 11. PRESSURE
 DESIGNED 200 psi OPERATING 145 psi TEST 200 AIR psi
 12. FEED WATER TREATMENT
 SATISFACTORY UNSATISFACTORY
 13. TYPE
 WATER TUBE FIRE TUBE C. I.

17. BOILER USE
 AIR RECEIVER
 18. COMBUSTION CONTROL (Mfg. Name)
 19. COMBUSTION
 _____ % CO₂ _____ % EXCESS O₂
 20. FLUE GAS TEMPERATURE
 AFTER BOILER _____ °F : AFTER HEAT TRAP _____ °F

SAFETY DEVICES
 SAFETY VALVES

21. MANUFACTURER F.C. KINGSTON
 22. NUMBER AND SIZE 1-3/8"
 23. PSI SETTING 200
 24. CONDITION GOOD

STEAM PRESSURE GAUGE

25. MANUFACTURER U.S. GAGE
 26. CORRECTIONS
 WATER LEG CONSTANT _____ psi; OTHER _____ psi

27. REASON IF NOT TESTED

FIRING EQUIPMENT

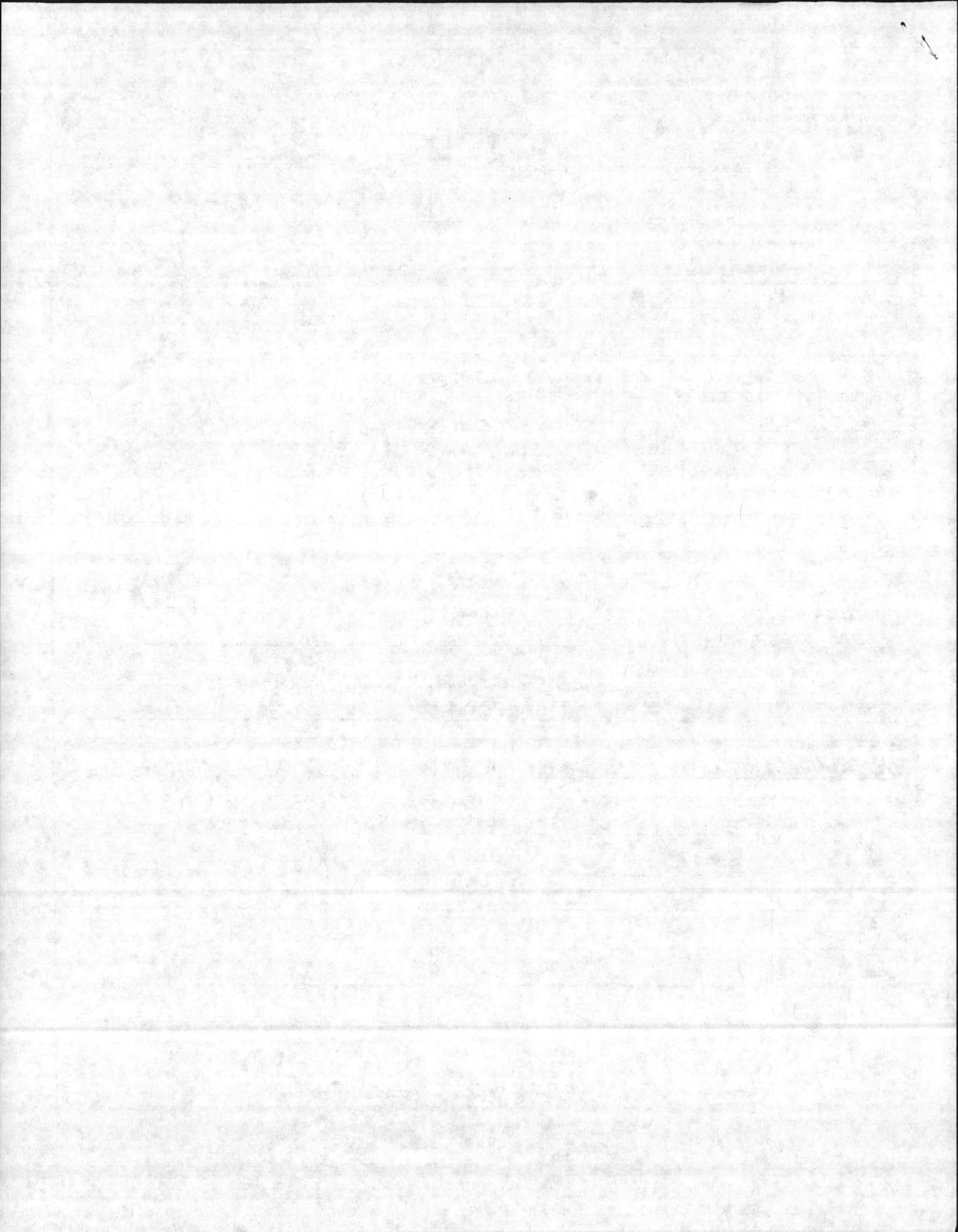
ITEM	IN SERVICE	ALTERNATE
28. MANUFACTURER		
29. TYPE		
30. FUEL GRADE		

31. INSPECTOR'S COMMENTS

OK - START & MAINTAIN PM LOG.

32. ATTACHMENT(S) (Check)
 COPY OF INSPECTOR'S REPORT SPECIAL COMMENTS

33. SIGNATURE
 R.M. Sellen
 BY DIRECTION



BOILER INSPECTION CHECK LIST

LOCATION		BLDG NO.	BOILER NO.	DATE
m C B C L		400	1607 PU-53	14 AUG 79
BOILER MFG. CURTIS		OPERATING PRESS. 145	DESIGN PRESS. 200	CAP. 11 CFM
SERIAL NO. 169126		MODEL NO.	N.B. NO. 132877	
BURNER MFG.		FIRING RATE:		
STEAM GAGE NAME: BROKE GLASS		PRESS. 0-300	TEST	
SV MFG. FC KINGSTON		CAP. 118 CFM	NO. 1	SIZE 3/8"
NO. 1	SET 200	OPEN 200	CLOSE —	
NO. 2	SET	OPEN	CLOSE	
NO. 3	SET	OPEN	CLOSE	
CO2%	02%	STACK TEMP	COMB. EFF.	PURGE TIME
NO. 1 FIREYE	C/O		A/L	
NO. 2 FIREYE	C/O		A/L	
HI-STEAM TEMP.	C/O		A/L	
EXCESS STEAM TEMP.	C/O		A/L	
HI OIL TEMP.	C/O		A/L	
HI OIL PRESS.	C/O		A/L	
LO OIL TEMP.	C/O		A/L	
LO OIL PRESS.	C/O		A/L	
LO ATOM AIR/STEAM	C/O		A/L	
NO. 1 LW	C/O		A/L	
NO. 2 LW	C/O		A/L	
LO FURNACE DRAFT	C/O		A/L	
LO FIRE START	C/O		A/L	
TYPE OF FUEL	YEAR BUILT 1969		A/L	
HEAT SURFACE	Boiler	WATER WALL		

*Hold For Gage
Ticket called*

SH. • 165
 HD • 142
 20" X 65"

OPERATIONS ONLY
 ① NEED GAGE 0-300 1/4"

REMARKS:

