

INSPECTION REPORT-BOILERS
 NAVFAC 9-11014/41 (3/87)
 Supersedes NAVDOCKS 2544
 S/N 0105-LF-004-0000

DATE OF INSPECTION
22 JAN. 1986

TYPE OF INSPECTION
 A INTERNAL & EXTERNAL B INTERNAL & EXTERNAL WITH PRESSURE TEST C OPERATIONAL

1. FROM
**COMMANDING GENERAL
 MCB, CAMP LEJEUNE, NC**

2. TO
**NAVFACENCOM
 NORFOLK, VA**

14. CERTIFICATE ISSUED YES NO
EXPIRES 22 JAN. 1988

15. BOILER INSPECTOR

Thomas L. Lanier
 NAVY OR NATIONAL BOARD NO.
NAVFAC 239

16. REASON FOR NOT ISSUING CERTIFICATE

BOILER DATA

3. MANUFACTURER
Le ROI, DRESSER INDUSTRIES

4. PROPERTY NO. PV-29202	5. MFG. SERIAL NO. AH 69-644	6. MFG. MODEL NO. N.B. 52280
7. BUILDING NO. 1202	8. YEAR BUILT 1980	9. CAPACITY 17 CU.FT. VOL.

10. FUEL (Check)
 COAL OIL GAS

11. PRESSURE
 DESIGNED **200** psi OPERATING **120** psi TEST **300** psi

12. FEED WATER TREATMENT
 SATISFACTORY UNSATISFACTORY

13. TYPE
 WATER TUBE FIRE TUBE C. I.

17. BOILER USE
AIR-RECEIVER

18. COMBUSTION CONTROL (Mfg. Name)

19. COMBUSTION
 _____ % CO₂ _____ % EXCESS O₂

20. FLUE GAS TEMPERATURE
 AFTER BOILER _____ °F : AFTER HEAT TRAP _____ °F

SAFETY DEVICES
SAFETY VALVES

21. MANUFACTURER
C D I

22. NUMBER AND SIZE
1-1/4"

23. PSI SETTING
200

24. CONDITION
GOOD

25. MANUFACTURER
ASHCROFT

26. CORRECTIONS
 WATER LEG CONSTANT _____ psi; OTHER _____ psi

27. REASON IF NOT TESTED

FIRING EQUIPMENT

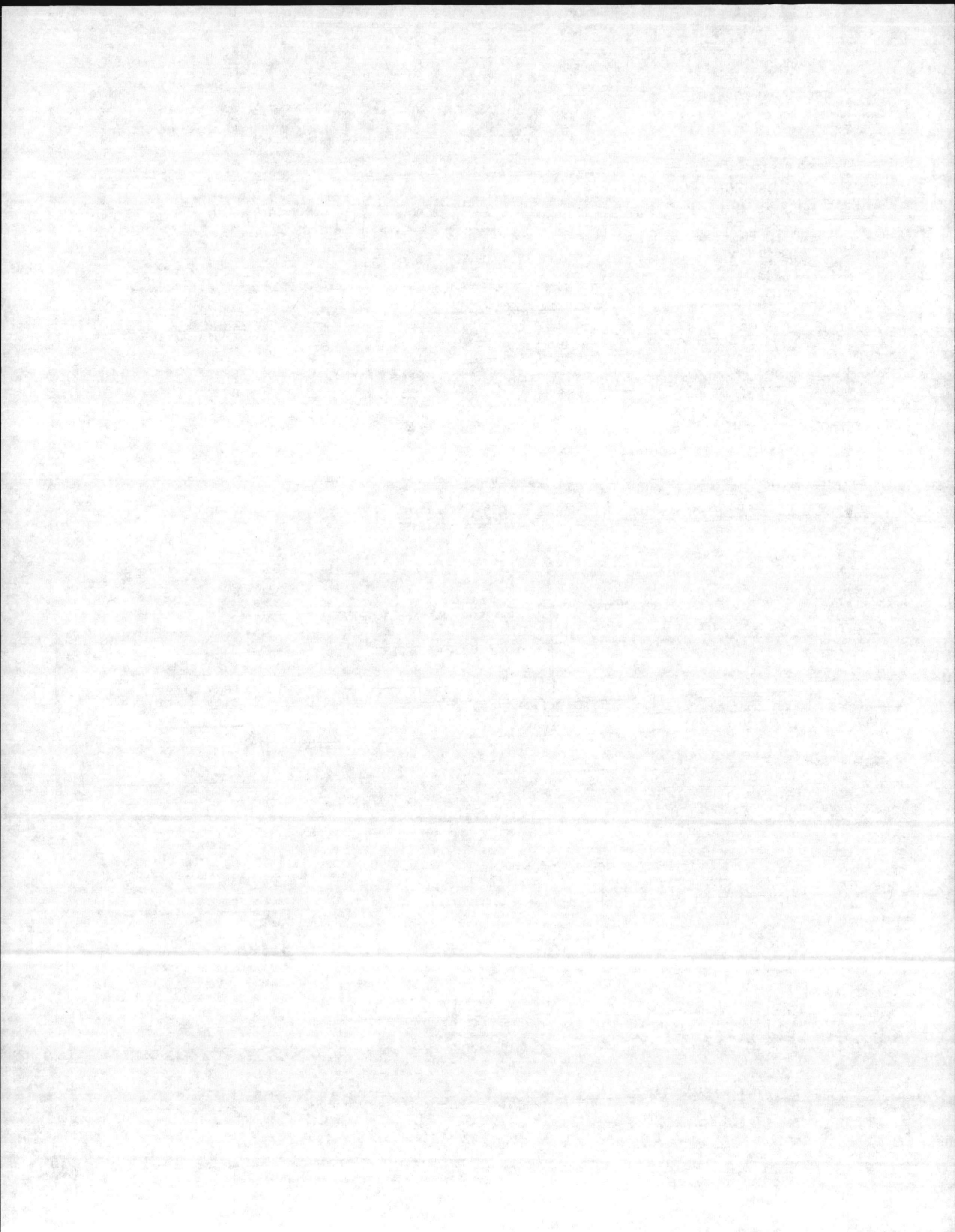
ITEM	IN SERVICE	ALTERNATE
28. MANUFACTURER		
29. TYPE		
30. FUEL GRADE		

31. INSPECTOR'S COMMENTS
UNIT WILL RETAIN SAME PROPERTY NO AS OLD AIR-COMPRESSOR

32. ATTACHMENT(S) (Check)
 COPY OF INSPECTOR'S REPORT SPECIAL COMMENTS

33. SIGNATURE
W. M. Kuei

BY DIRECTION



LOCATION	AIR-RECEIVER	BLDG. NO.	REC. NO.	DATE
		1202	PU-29	22 JAN. 86

MANUFACTURED BY: **LE ROI (PRESSER INDUSTRIES INC.)**

MFR. SER. NO. **AH 69-644** MFR. MODEL NO. NATL. BRD. NO. **52280**

YEAR BLT. **80** DSG. PRESS. **200** OPER. PRESS. **120** MAX. TEMP. **450** TYPE
 CAP. **17 CUFT.** OVER ALL LGTH. **66** DIA. **24** SHELL THK. **.183** HEAD THK. **.159** WATER GAL.

PRESS. GAGE **ASHCROFT** PRESS. RANGE **0-300** SIZE **2 1/2"**

SV MFR. **C.D.I.** SIZE **1/4"** CAP. **152 CFM**

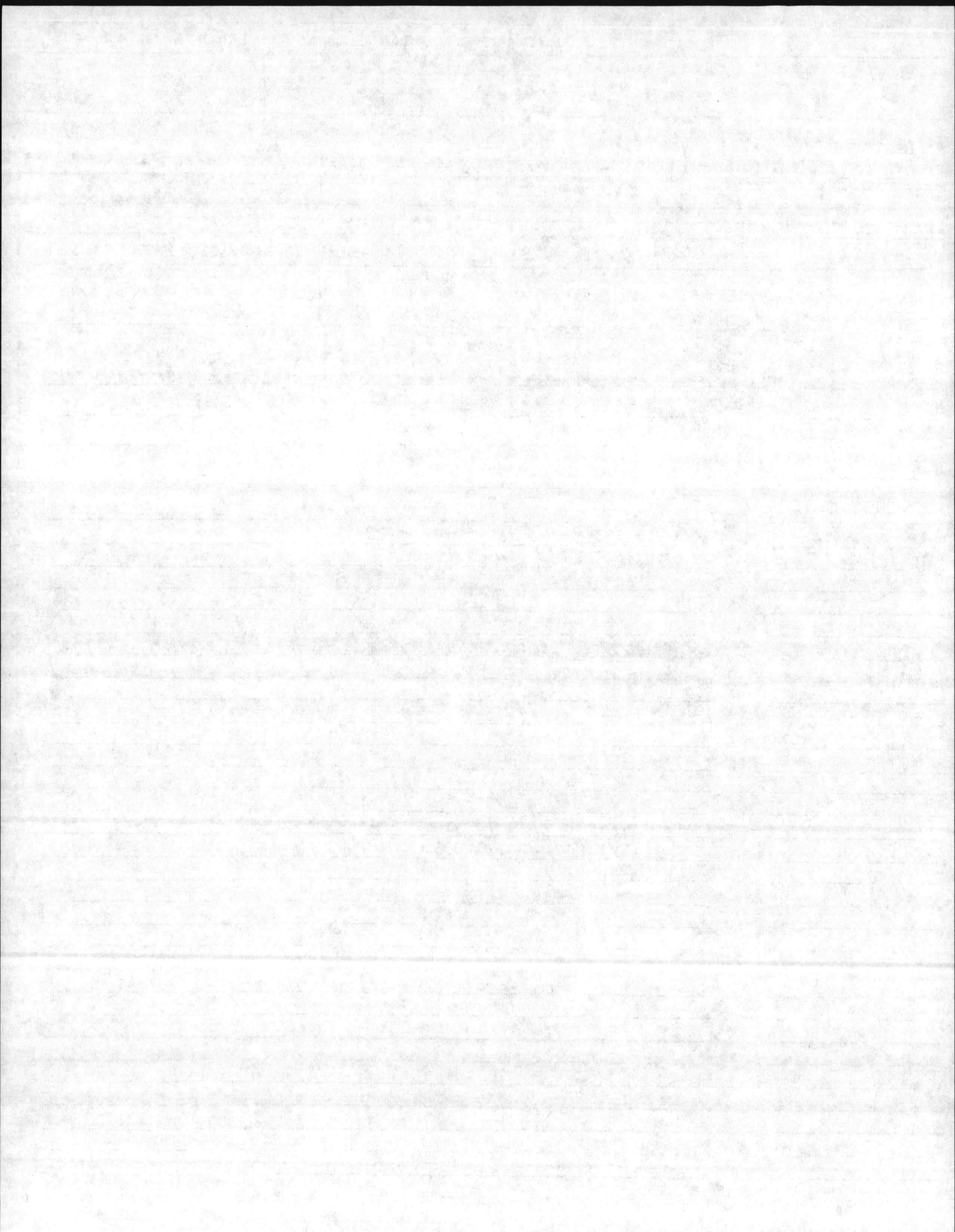
NO. 1	SET 200	OPEN 200	CLOSE 95
NO. 2	SET	OPEN	CLOSE
NO. 3	SET	OPEN	CLOSE

INSPECTION DATE REMARKS

22 JAN. 86 **HYDRO @ 300 PSI - OK**
23 JAN. 86 **TESTED SIU - OK**

1. INSTALL COVER ON ELEC. BOX AT MOTOR.

*** NEW UNIT WILL RETAIN SAME PROPERTY NO AS OLD AIR COMPRESSOR PU-29**



INSPECTION REPORT-BOILERS
 NAVFAC 9-11014/41 (3/67)
 Supervises NAVDOCKS 2344
 S/N 0103-LF-004-0000

DATE OF INSPECTION

16 AUG - 30 DEC 79

TYPE OF INSPECTION

A INTERNAL & EXTERNAL B INTERNAL & EXTERNAL WITH PRESSURE TEST C OPERATIONAL

1. FROM
 BASE MAINT. OFFICER
 2. TO
 TEMP LEITNER, N. S.
 NAVFACENGCOM
 NORFOLK, VA

14. CERTIFICATE ISSUED YES NO
 EXPIRES 16 AUG-1981
 15. BOILER INSPECTOR

James L. Sullivan
 NAVY OR NATIONAL BOARD NO
 NAVFAC 225

16. REASON FOR NOT ISSUING CERTIFICATE

BOILER DATA

3. MANUFACTURER
 WORTHINGTON

4. PROPERTY NO PV-29	5. MFG. SERIAL NO 7650	6. MFG. MODEL NO NB-8650
7. BUILDING NO 1202	8. YEAR BUILT 1949	9. CAPACITY 15 CU-FT. VOLUME

10. FUEL (Check)
 COAL OIL GAS

11. PRESSURE
 DESIGNED 200 psi OPERATING 120 psi TEST 300 psi

12. FEED WATER TREATMENT
 SATISFACTORY UNSATISFACTORY

13. TYPE
 WATER TUBE FIRE TUBE C. I.

17. ~~DESCRIPTION~~
 AIR RECEIVER
 19. COMBUSTION
 % CO₂ _____ % EXCESS O₂ _____

18. COMBUSTION CONTROL (Mfg. Name)
 20. FLUE GAS TEMPERATURE
 AFTER BOILER _____ °F : AFTER HEAT TRAP _____ °F

SAFETY DEVICES
 SAFETY VALVES

21. MANUFACTURER KUNKLE	22. NUMBER AND SIZE 1-1/2"	23. PSI SETTING 200	24. CONDITION NEW
----------------------------	-------------------------------	------------------------	----------------------

STEAM PRESSURE GAUGE

25. MANUFACTURER ASHCROFT	26. CORRECTIONS WATER LEG CONSTANT _____ psi; OTHER _____ psi
------------------------------	------------------------------------------------------------------

27. REASON IF NOT TESTED

FIRING EQUIPMENT

ITEM	IN SERVICE	ALTERNATE
28. MANUFACTURER		
29. TYPE		
30. FUEL GRADE		

31. INSPECTOR'S COMMENTS
 1) THE SAFETY VALVE WAS REPAIRED-
 2) START & MAINTAIN A PM LOG-

ATTACHMENT(S) (Check)

COPY OF INSPECTOR'S REPORT SPECIAL COMMENTS

33. SIGNATURE
R. M. Sullivan

BY DIRECTION

BOILER INSPECTION CHECK LIST

LOCATION		BLDG NO.	BOILER NO.	DATE
MCBCL		1202	PU-29	16 AUG 79
BOILER MFG. <i>WORTHINGTON</i>	OPERATING PRESS. <i>120</i>	DESIGN PRESS. <i>200</i>	CAP. <i>15 CFU</i>	
SERIAL NO. <i>7650</i>	MODEL NO.	N.B. NO. <i>8650</i>		
BURNER MFG.	FIRING RATE:			
STEAM GAGE NAME: <i>ASHCROFT</i>	PRESS. <i>0-300</i>		TEST <i>OK</i>	
SV MFG. <i>X STEAM KUNKLE</i>	CAP. <i>144 CFM</i>	NO. <i>1</i>	SIZE <i>1/2"</i>	
NO. 1	SET <i>200</i>	OPEN	CLOSE	
NO. 2	SET	OPEN	CLOSE	
NO. 3	SET	OPEN	CLOSE	
CO2%	<i>02%</i>	STACK TEMP	COMB. EFF.	PURGE TIME
NO. 1 FIREYE	C/O			A/L
NO. 2 FIREYE	C/O			A/L
HI-STEAM TEMP.	C/O			A/L
EXCESS STEAM TEMP.	C/O			A/L
HI OIL TEMP.	C/O			A/L
HI OIL PRESS.	C/O			A/L
LO OIL TEMP.	C/O			A/L
LO OIL PRESS.	C/O			A/L
LO ATOM AIR/STEAM	C/O			A/L
NO. 1 LW	C/O			A/L
NO. 2 LW	C/O			A/L
LO FURNACE DRAFT	C/O			A/L
LO FIRE START	C/O			A/L
TYPE OF FUEL	YEAR BUILT <i>1949</i>			A/L
HEAT SURFACE	Boiler	WATER WALL		

*HOLD FOR
DIFF. SU (Ticket called)*

*OK TO write
Report*

REMARKS:

24 X 62 (HYDROED AT 300 PSI OK)

HD .2242

SA - 281 (REMOVED STOP VALVE FROM BETWEEN SU & TANK)

