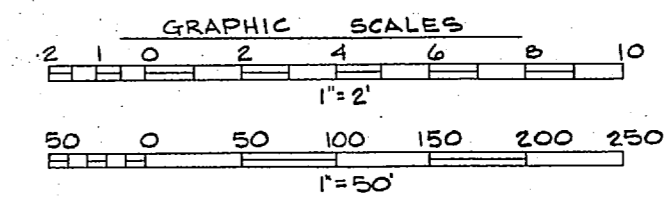
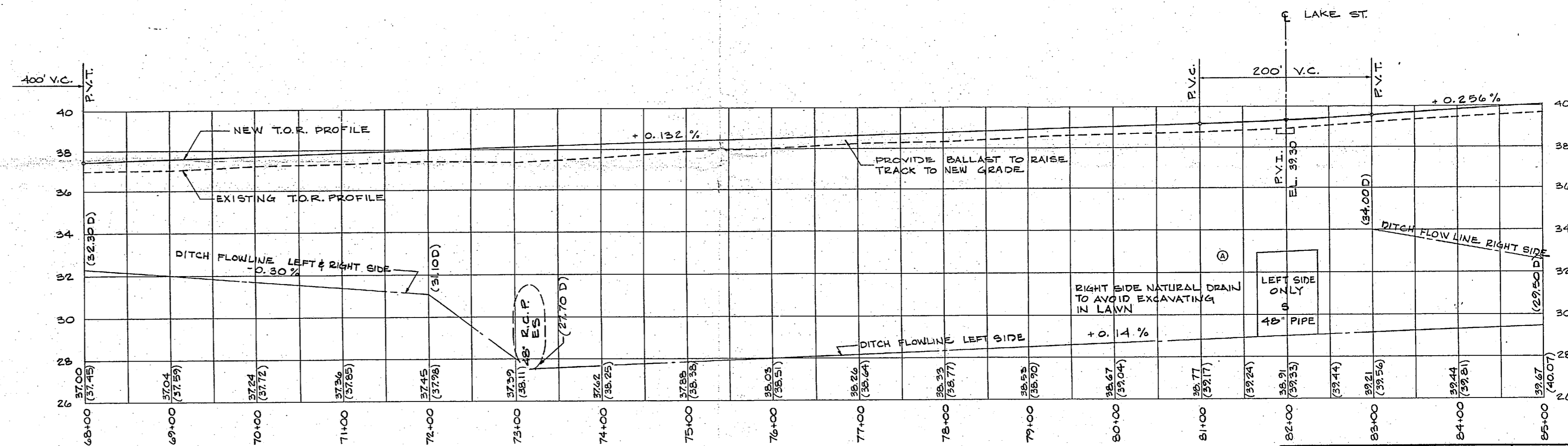
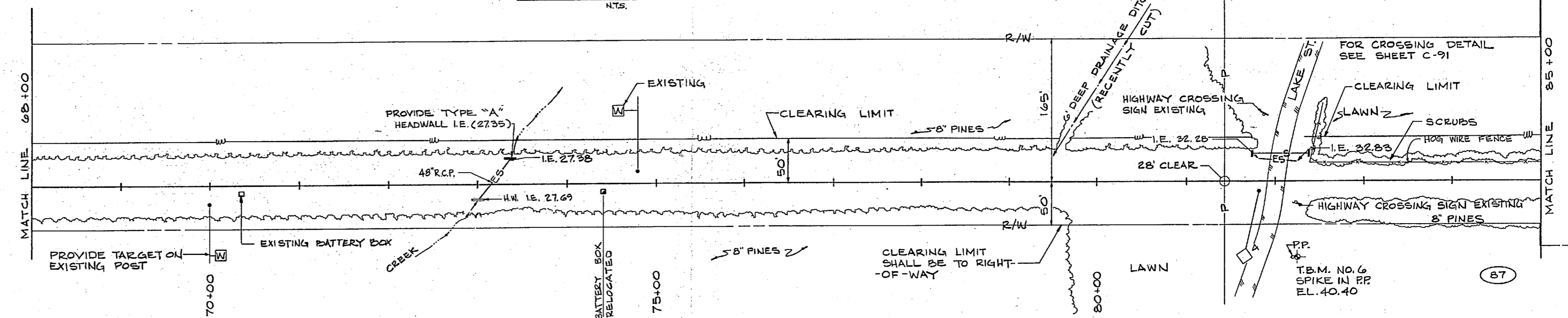
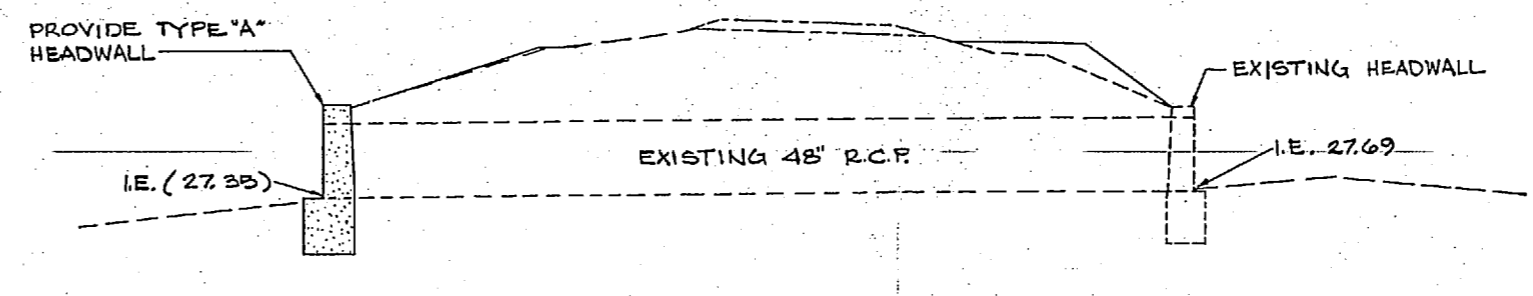
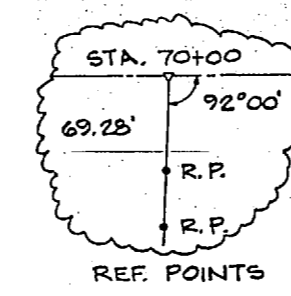
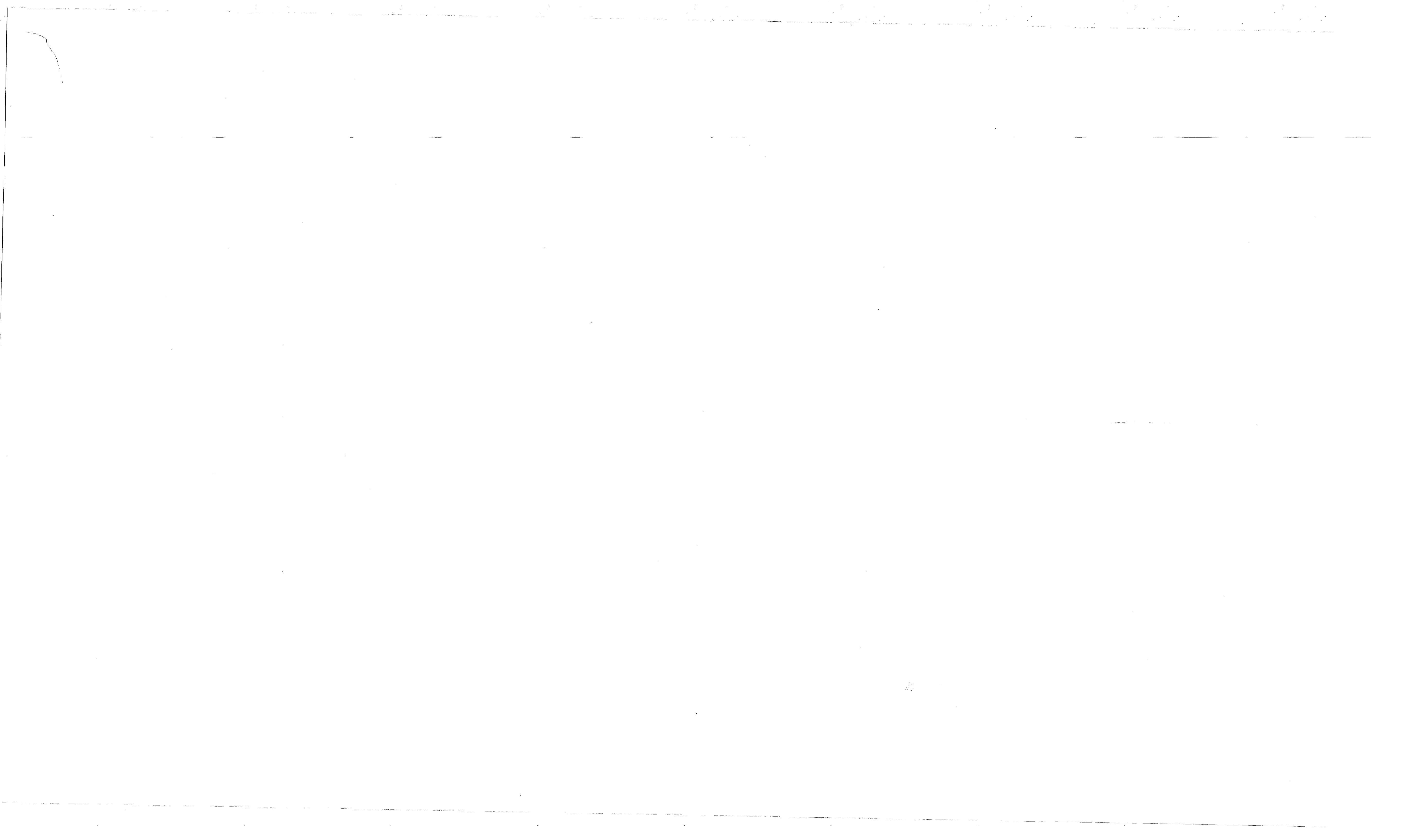
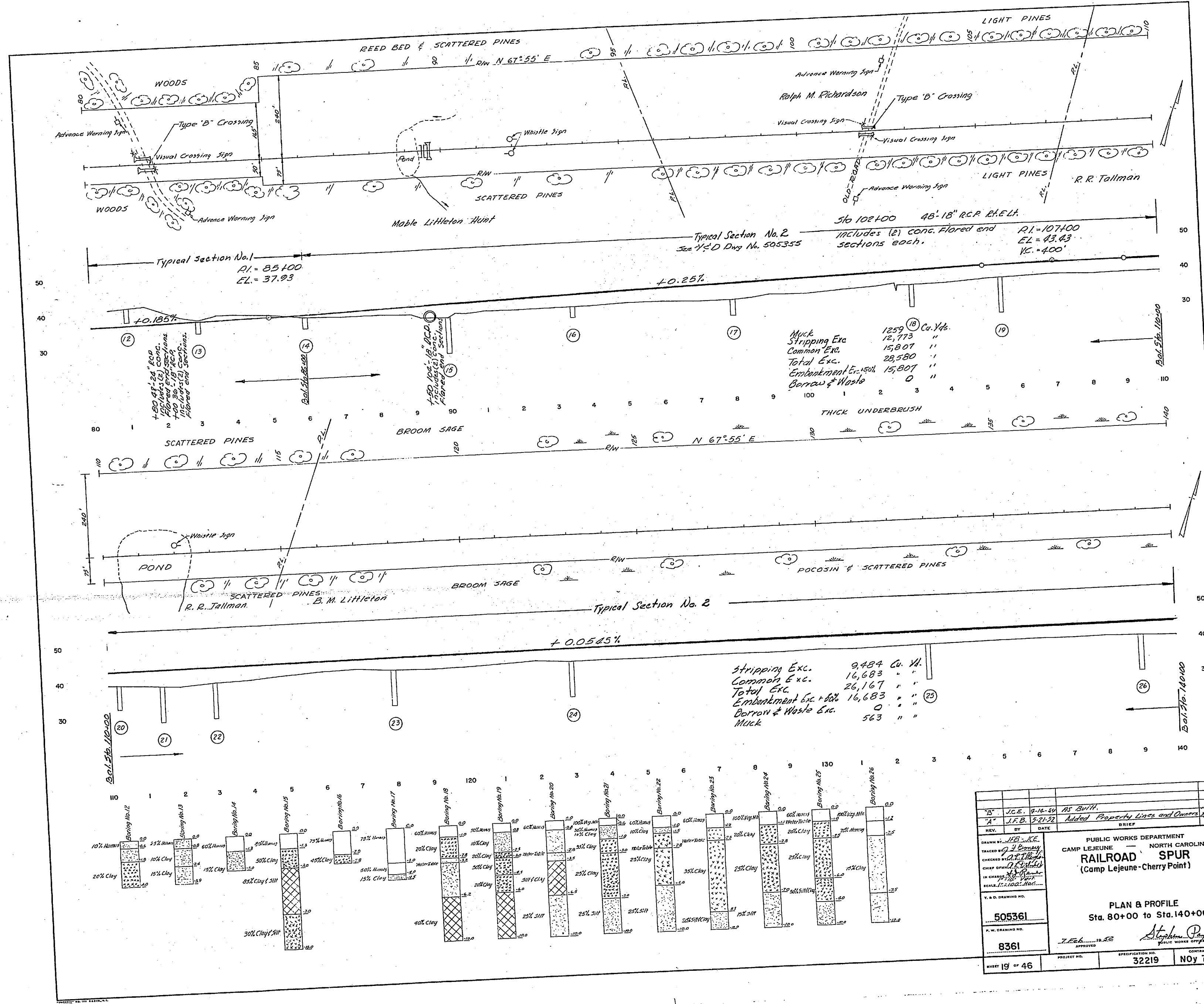


REVISIONS		
NO.	DESCRIPTION	DATE
1	REVISED AS-BUILT	10/97



RECORD DRAWING		LETTER DATED		C-5	
DAVIS & FLOYD, INC. CONSULTING ENGINEERS GREENWOOD, SOUTH CAROLINA		DEPARTMENT OF THE NAVY NAVAL FACILITIES ENGINEERING COMMAND ATLANTIC DIVISION		NORFOLK, VA.	
PROJ. NO. 215806	DATE 1/23/87	NAVAL STATION	CAMP LEJEUNE, NORTH CAROLINA	REPAIR RAILROAD SYSTEM (SECOND INCREMENT)	
STA. PROJ. NO. LE 4101MS	DATE 1/23/87	LEJEUNE R.R. STA. 68+00 TO 85+00		DRAWN BY: [Signature]	
APPROVED: [Signature]	DATE 1/23/87	SIZE	CODE EXPT. NO. F 80091	NAVFAC DRAWING NO. 416806	CONTRA. CONTR. NO. N62470-83-B-3441
ACTIVITY SATISFACTORY TO [Signature]		DATE 2/11/87		SHEET 7 OF 143	





Typical Section No. 1
 RL = 85.100
 EL = 37.93

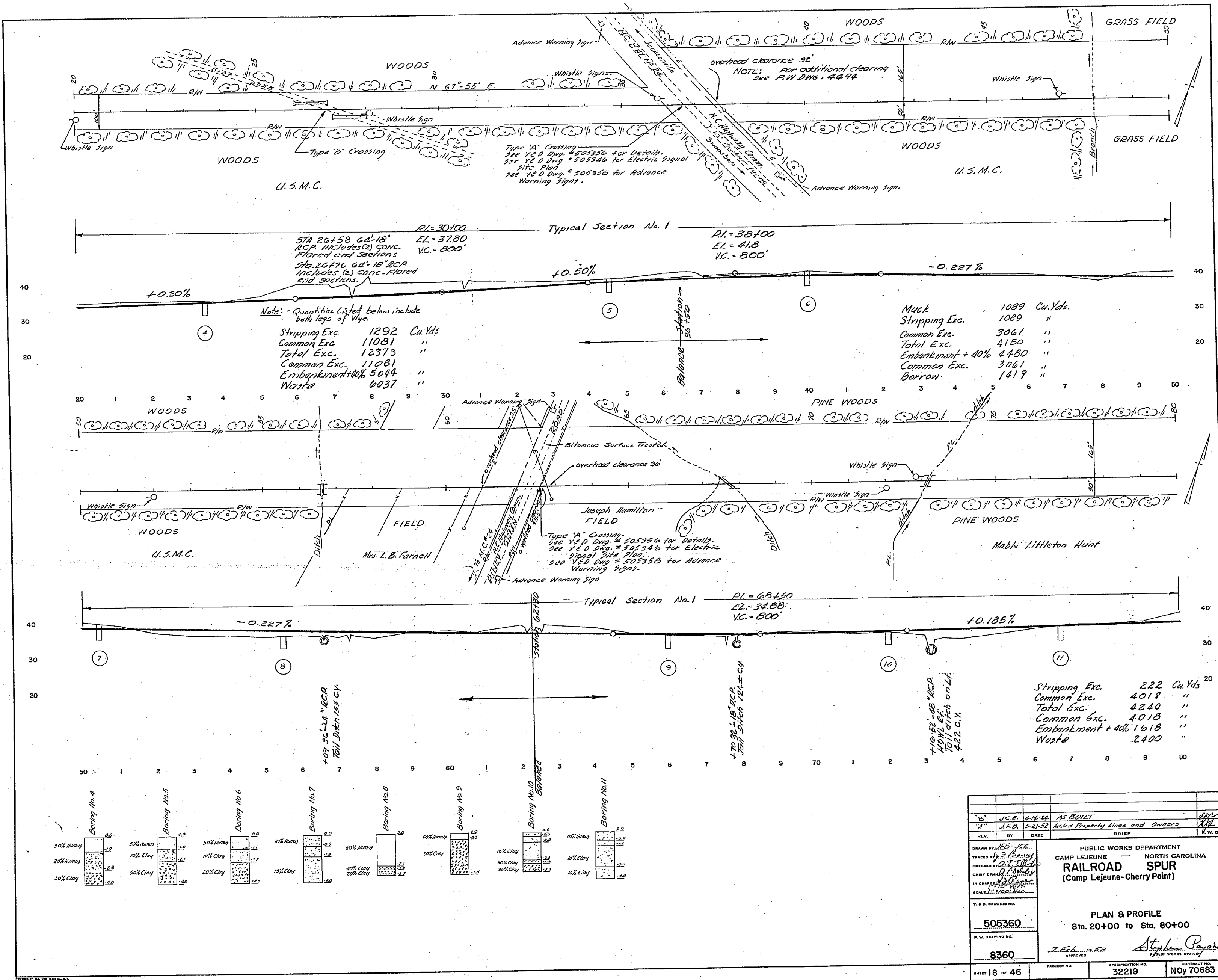
Typical Section No. 2
 See 75-D Draw No. 505355
 36' 102+00 46' 18" RCP BHELA
 Includes (2) conc. floored end sections each.
 RL = 107.100
 EL = 43.83
 VC = 400'

Muck 1229 Cu. Yds.
 Stripping Exc. 12,713 "
 Common Exc. 15,807 "
 Total Exc. 28,520 "
 Embankment Exc. 15,807 "
 Barron & Waste 0 "

Stripping Exc. 9,484 Cu. Yds.
 Common Exc. 16,683 "
 Total Exc. 26,167 "
 Embankment Exc. 14,583 "
 Barron & Waste Exc. 563 "
 Muck "

DATE	BY	REVISION
12-16-14	J.E.B.	As per Property Lines and Contour
12-21-14	J.E.B.	As per Property Lines and Contour
PUBLIC WORKS DEPARTMENT NORTH CAROLINA RAILROAD SPUR (Camp Lejeune-Cherry Point)		
PLAN & PROFILE Sta. 80+00 to Sta. 140+00		
PROJECT NO.	32219	NOY 70683
DATE	19 46	





REV.	DATE	BY	DESCRIPTION
B	4-14-52	J.E.E.	AS BUILT
A	5-21-52	J.F.B.	Added Property Lines and Owners
OF			BRIEF
DATE			W.D.

DESIGNED BY	J.E.E.
CHECKED BY	J.F.B.
IN CHARGE	J.F.B.
SCALE	1" = 100'
T. & D. DRAWING NO.	505360
P. W. DRAWING NO.	8360
APPROVED	J.E.E.
DATE	4-14-52

PUBLIC WORKS DEPARTMENT	
CAMP LEJEUNE	NORTH CAROLINA
RAILROAD SPUR	
(Camp Lejeune - Cherry Point)	
PLAN & PROFILE	
Sta. 20+00 to Sta. 80+00	
APPROVED	Steph. P. ...
DATE	4-14-52
PROJECT NO.	32219
CONTRACT NO.	NOY 70683
SHEET	18 OF 46

